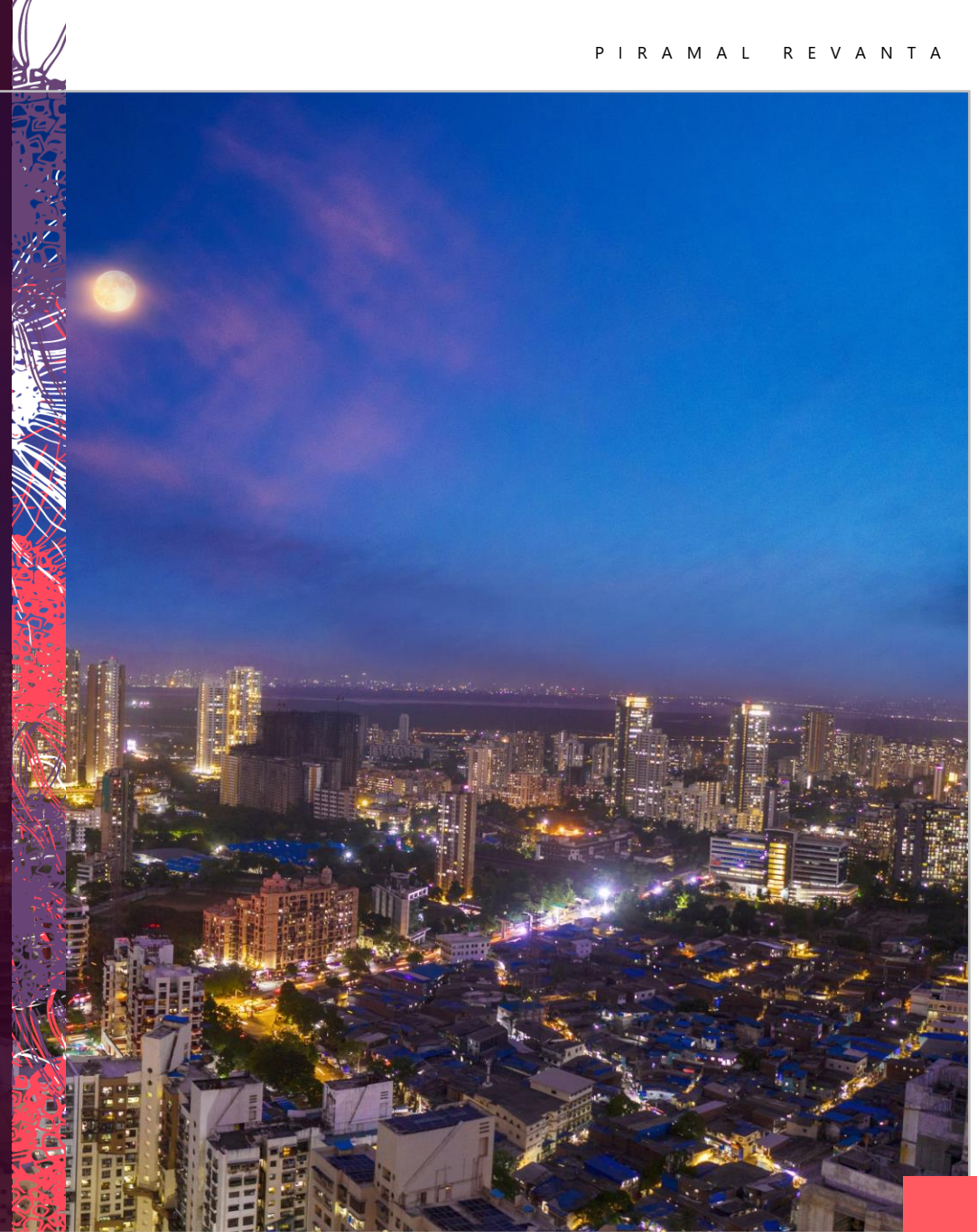


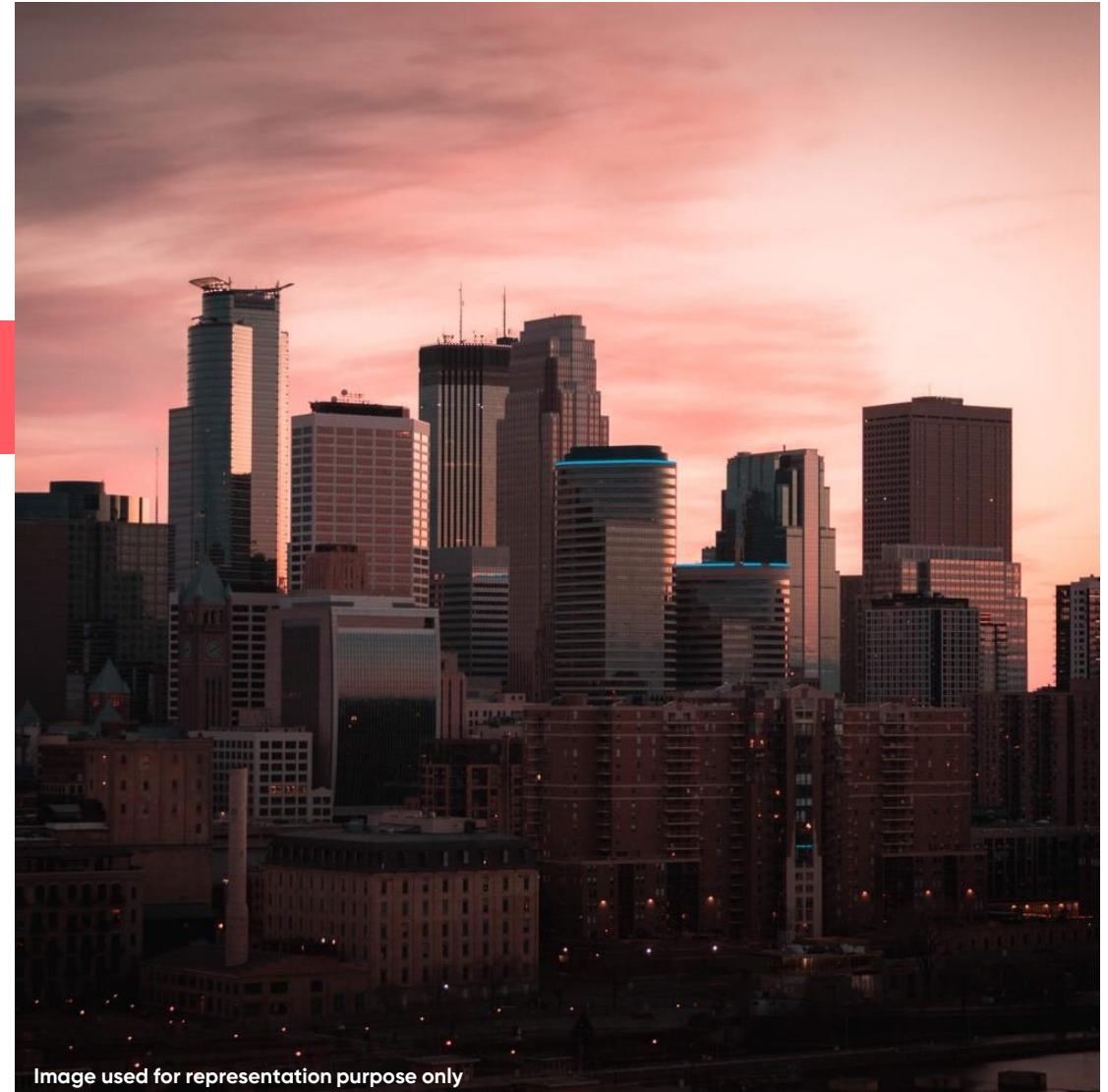
# SCLASS HOMES



Piramal  
**revanta**  
MULUND



# ENRICHING LIVES BY SETTING GOLD STANDARDS







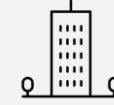
MAHARASHTRA  
MUMBAI



## CURRENT PROJECTS



Piramal  
**revanta**  
MULUND



A luxury **12-acre** integrated township.



Situated at the foothills of Sanjay Gandhi National Park.



Skyscrapers up to 47-storeys



Tower 1 topped out. RERA Possession in Mar 2023.



Up to 50% open spaces, with 35+ amenities, including 2 Clubhouses.



The city's finest 1, 2 & 3 BHKs





MAP NOT TO SCALE

## LOCATION ADVANTAGE

### THREE SIDED ACCESS:

- Proposed Goregaon Mulund Link Road (GMLR)
- Lal Bahadur Shastri Road
- Marathon Avenue Access

### REACH ANYWHERE IN NO TIME:

- Proposed Sonapur Metro Station – 0.5 km
- Nahur Railway Station – 1.7 km
- Eastern Express Highway – 2 km
- Mulund Railway Station – 2.8 km
- Mumbai Intl Airport – 14.7 km

LAUNCHING

# S CLASS HOMES

SMART RESIDENCES THAT SPELL CLASS



WHAT IS **S** CLASS?



# S MART RESIDENCES



**MAKING LIFE  
SIMPLER**



**SAFETY &  
SECURITY**



**ENERGY  
EFFICIENT**

image used for representation purpose



## ALWAYS A STEP AHEAD, WITH FUTURISTIC TECHNOLOGIES



Voice control with  
Amazon Echo



Appliances  
Control



Smart IOT  
Door Lock



Temperature &  
Lighting control



Digital Motion  
Sensors

**S**TUNNING VIEWS





Artistic Impression

An awesome  
Sundeck to enjoy an  
amazing Sunset!

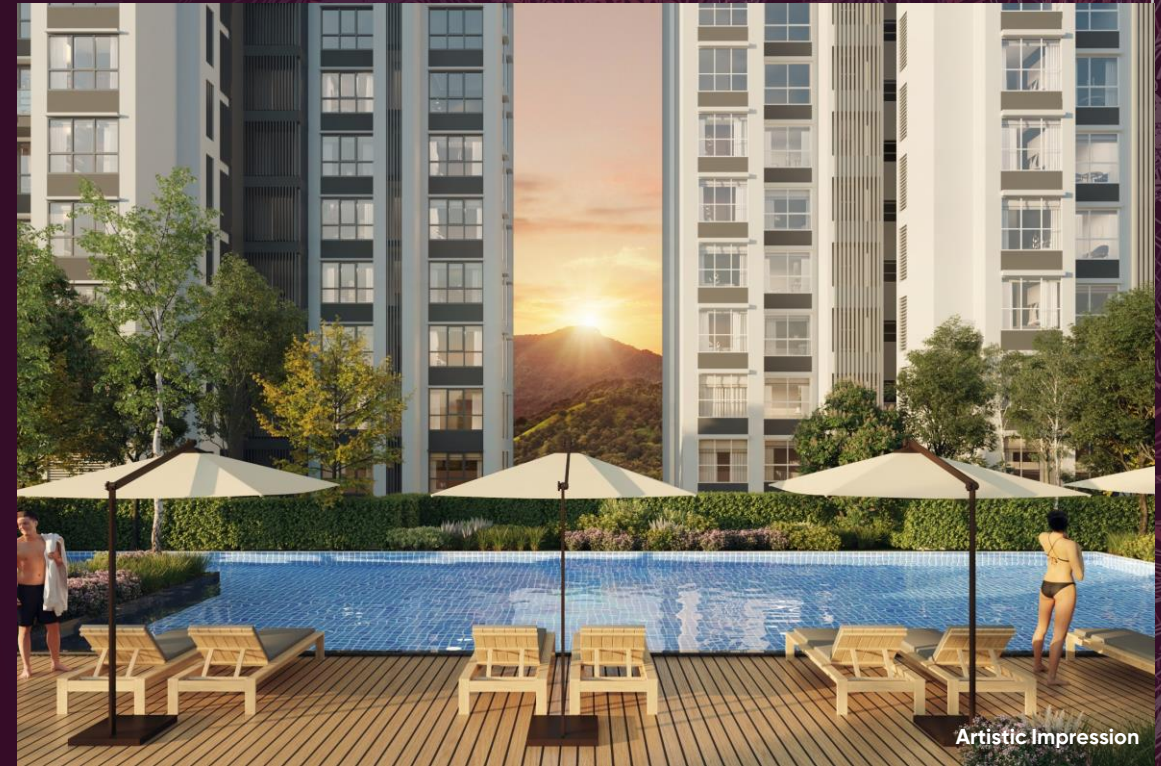


Actual view of Sanjay  
Gandhi National Park as  
seen from a S-Class Home\*

\*Select residences



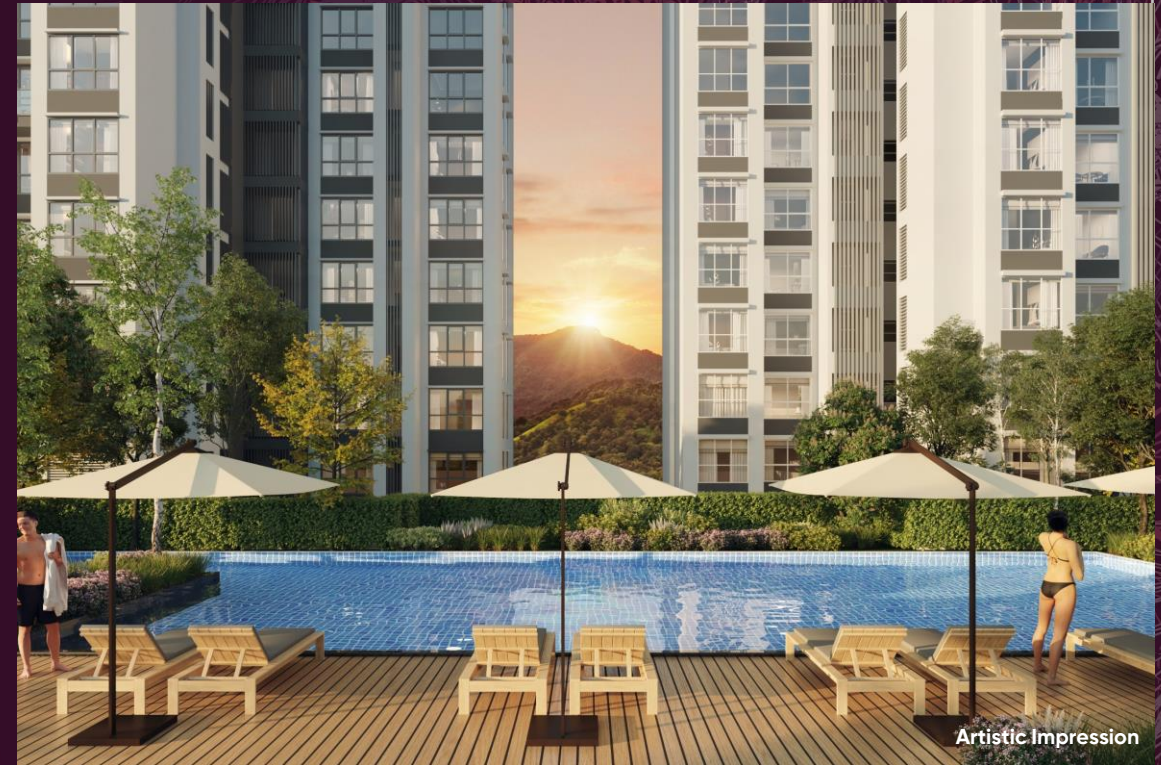
# SPECTACULAR AMENITIES



Over 50% open spaces



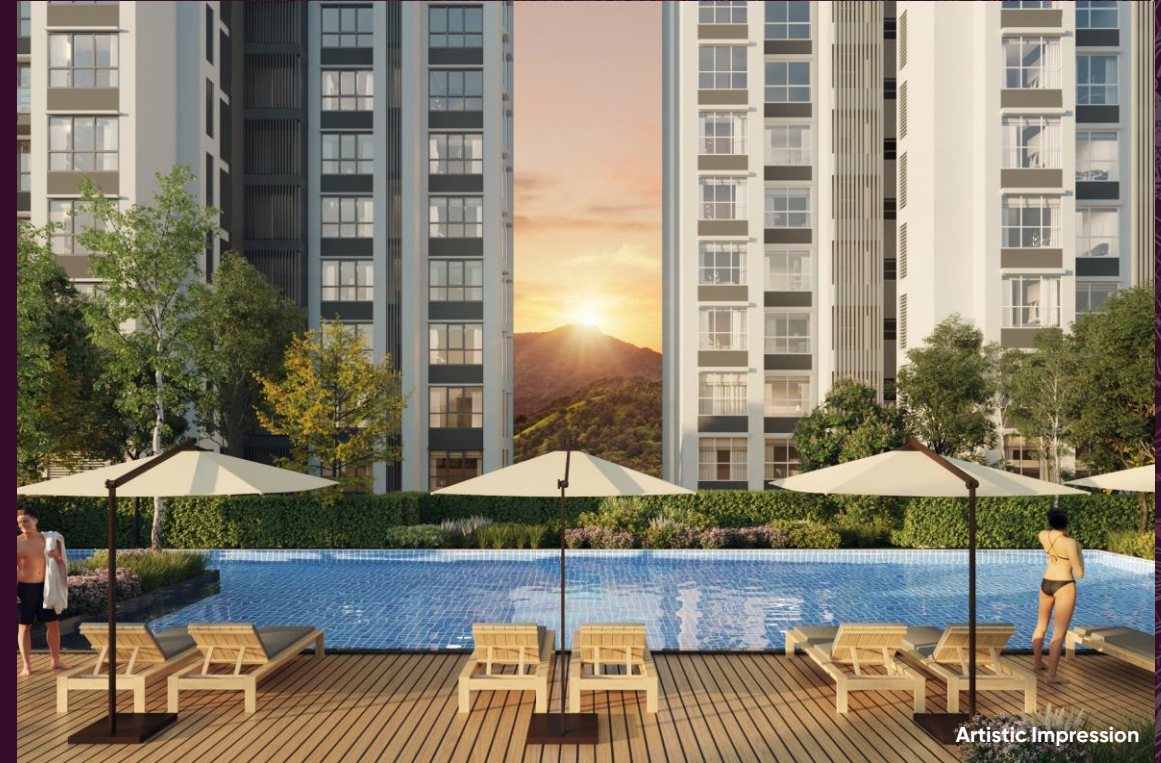
# SPECTACULAR AMENITIES



And 35+ lifestyle amenities with  
2 swimming pools



# SPECTACULAR AMENITIES



Two multi-storey clubhouses with over  
30,000 sq.ft. of amenity space



**PIRAMAL REVANTA PRESENTS  
TOWER 4**





Artistic Impression

T&C Apply

Piramal Revanta Tower 4 MahaRERA Registration No. - P51800031310 MahaRERA website: <https://maharera.mahaonline.gov.in> Project is mortgaged to IndusInd Bank Ltd. and other member lenders.





# TOWER HIGHLIGHTS

---



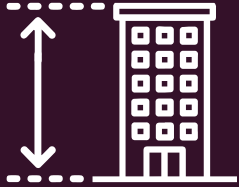


Strategically located  
the at the **North  
corner** of the  
development.



Stock Image





Rising Up To ~137 M  
With Dedicated  
Covered Pick-up And  
Drop-off Area



Artistic Impression





Standalone tower, offering  
privacy from other towers  
and the podium.



Artistic Impression





## Grand Double Height Entrance Lobby



Stock image





All residences face  
either Sanjay Gandhi National  
Park, the Podium Landscaping  
or the Ground Landscaping.





# CONSTRUCTION PROGRESS



## EXCAVATION 75% COMPLETED



**RERA POSSESSION DATE**

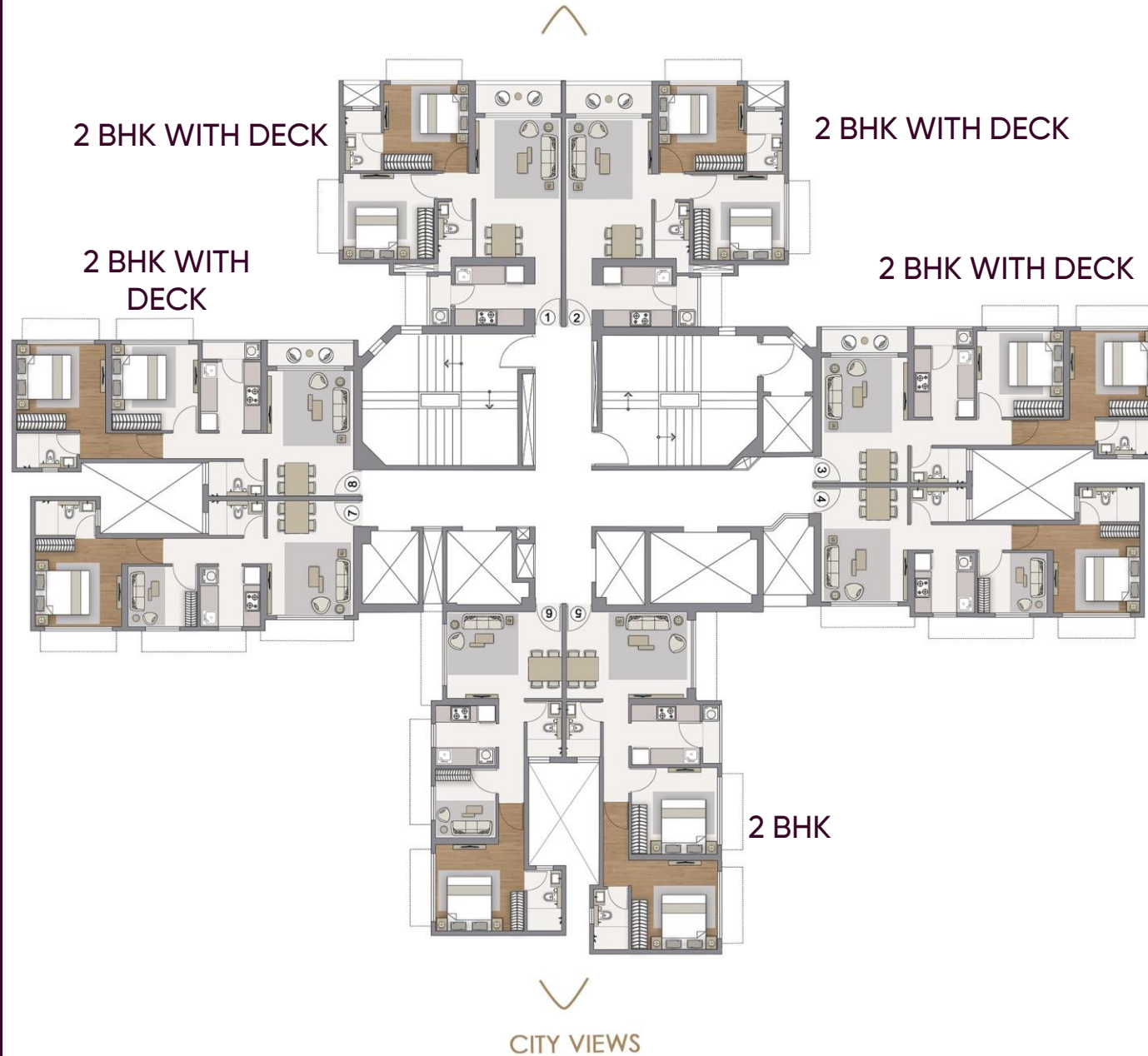
**MARCH 2026**

Actual Images



## FLOOR PLANS





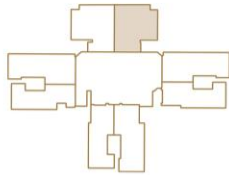
TYPICAL FLOOR PLAN

## S-CLASS HOMES - 2 BHK WITH DECK (618 UCA)

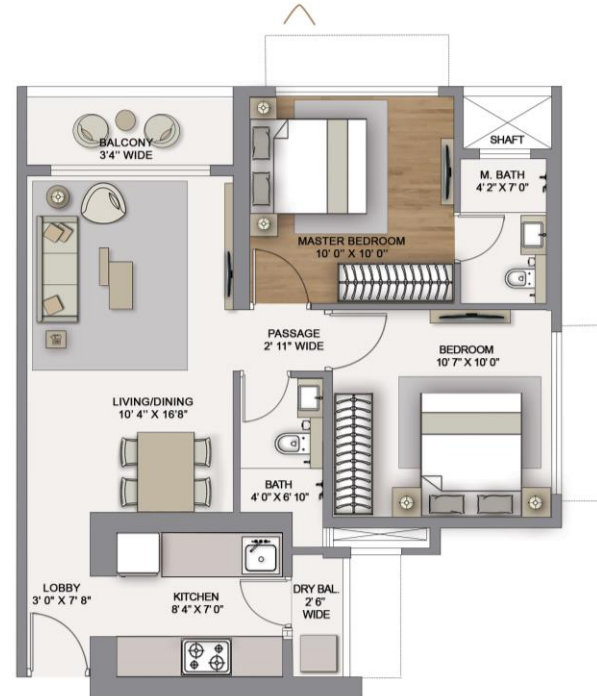
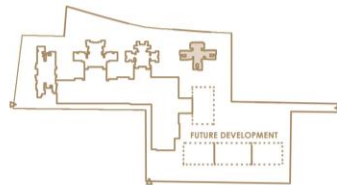
Carpet Area : 570 Sq.Ft. / 53.00 Sq.Mts.  
Balcony : 34 Sq.Ft. / 3.18 Sq.Mts.  
Dry Balcony : 14 Sq.Ft. / 1.33 Sq.Mts.

Sanjay Gandhi National Park Views

Unit Location











Tower Location



Piramal Revanta Tower 4 MahaRERA Registration No. - P51800031310 MahaRERAWebsite: <https://maharera.mahaonline.gov.in> Project is mortgaged to IndusInd Bank Ltd. and other member lenders.



## USPs

-  Home Automation Enabled
-  Air Conditioned Homes
-  Vastu designed East West orientation
-  Sprawling SGNP views
-  Sundeck in living room
-  Optimally sized apartments
-  Large windows to maximize daylight
-  Laminated Wooden flooring in master bedroom





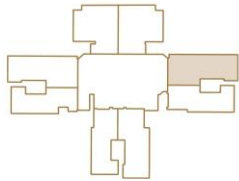
Actual Image

S CLASS HOMES - 2 BHK with Deck (606 UCA)

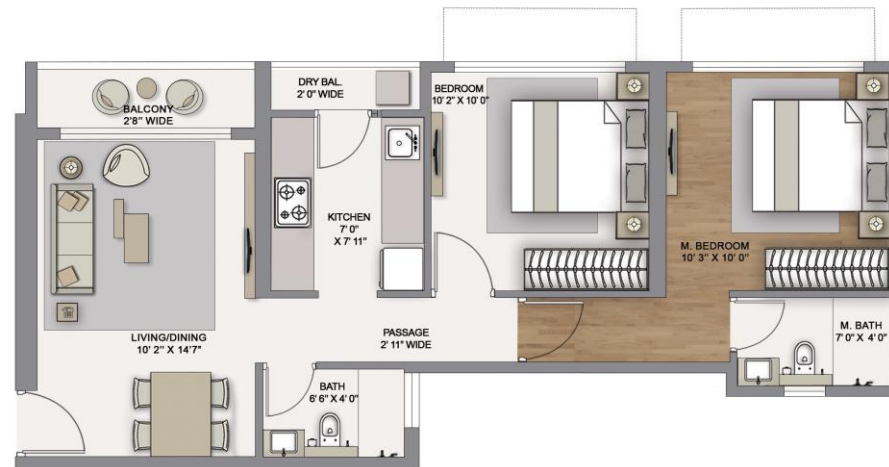
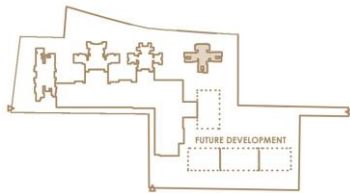
Carpet Area : 564 Sq.Ft. / 52.39 Sq.M  
 Balcony : 27 Sq.Ft. / 2.51 Sq.Mts  
 Dry Balcony : 15 Sq.Ft. / 1.38 Sq.Mts.

Sanjay Gandhi National Park Views





Unit Location



Tower Location



USPs

-  Sprawling SGNP views from **ALL rooms and kitchen**
-  Air Conditioned Homes
-  Vastu designed East West orientation
-  Home Automation Enabled
-  Sundeck in living room
-  Optimally sized apartments
-  Large windows to maximize daylight
-  Laminated Wooden flooring in master bedroom





Actual Image

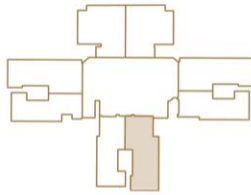
## S CLASS HOMES - 2 BHK (572 CA)

Carpet Area : 559 Sq.Ft. / 51.92 Sq.Mts.

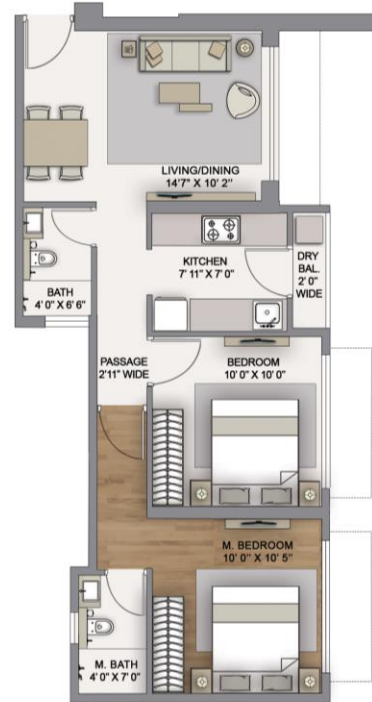
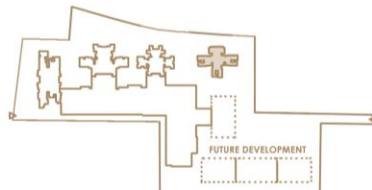
Balcony : 0 Sq.Ft. / 0 Sq.Mts.

Dry Balcony : 13 Sq.Ft. / 1.24 Sq.Mts.

### Unit Location











### Tower Location



CITY VIEWS

## USP s

-  Serene city views from **ALL rooms and kitchen**
-  Air Conditioned Homes
-  Vastu designed East West orientation
-  Clean and efficiently designed floor plate with no wastage
-  Large windows to maximize daylight
-  Laminated Wooden flooring in master bedroom
-  Floor to floor height of 3.1 m
-  Home Automation Enabled





## THE AMENITIES

# THE CLUBHOUSE



TWO DEDICATED  
CLUBHOUSES



OVER 30,000 SQ.F.T. OF  
AMENITY SPACE



MULTISTOREY CLUBHOUSE  
WITH VIEWS OF SGNP



Image used for representation purpose only





Artistic Impression

# CAFE

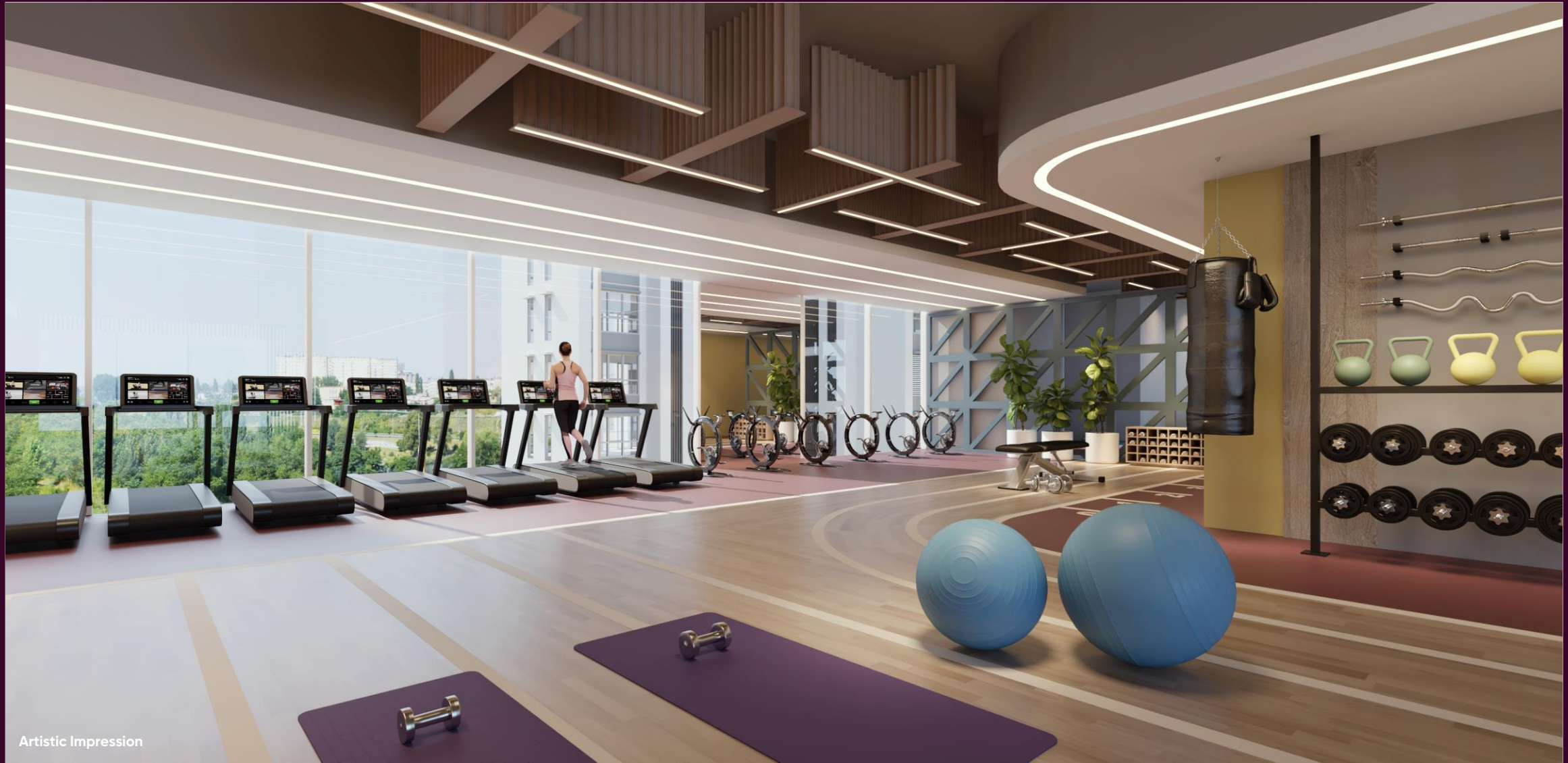




Artistic Impression

# GAMES ROOM





Artistic Impression

# GYMNASIUM





Artistic Impression

# LIBRARY





Artistic Impression

# MULTIPURPOSE COURT



# PODIUM LEVEL

Image used for representation purpose only



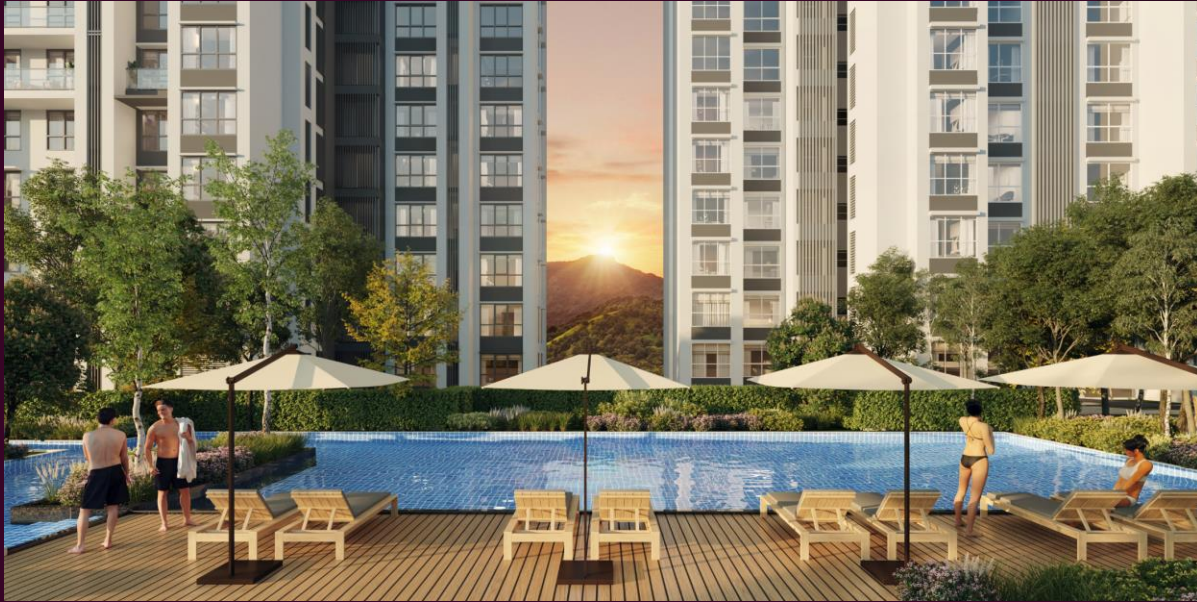


Amphitheatre



Dog Park





Swimming Pool



Free Play Lawn for  
Cricket/Football

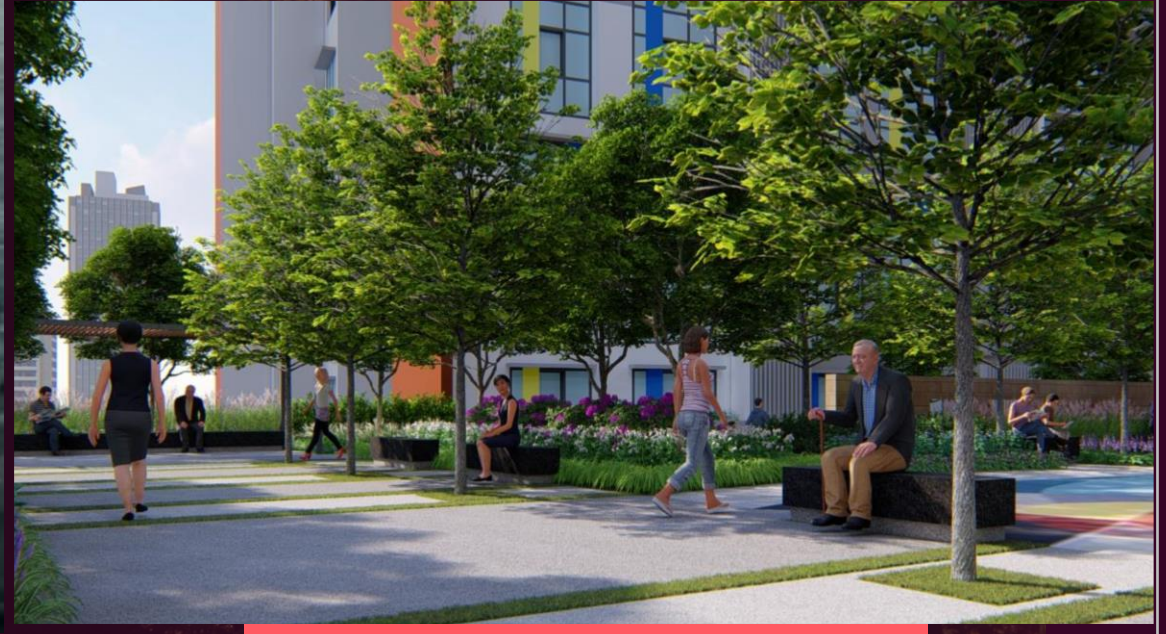
Images used for representation purpose only

Piramal Revanta Tower 4 MahaRERA Registration No. - P51800031310 MahaRERA website: <https://maharera.mahaonline.gov.in> Project is mortgaged to IndusInd Bank Ltd. and other member lenders.





Rock Climbing Wall



Senior Citizen Area

Images used for representation purpose only

Stock Images

Piramal Revanta Tower 4 MahaRERA Registration No. - P51800031310 MahaRERA website: <https://maharera.mahaonline.gov.in> Project is mortgaged to IndusInd Bank Ltd. and other member lenders.



# GROUND LEVEL

Image used for representation purpose only





Multi Purpose Court



Kids' Play Ground



Yoga Garden



Courtyard Seating



# LAUNCH OPPORTUNITY AND BENEFITS



## BENEFIT 01

**S**CLASS  
HOMES

**AFTER AN OVERWHELMING RESPONSE FOR THE PRE-LAUNCH  
THE BENEFIT FOR PRE-BOOKING JUST GOT BETTER**

# BENEFIT 01



## WHAT WE PROMISED



## BENEFIT 01

PRELAUNCH  
BENEFIT

1.5X

INR 7.5 LAC

BENEFIT FOR  
5 LAC S-PASS

## BENEFIT 01



**WHAT WE'RE NOW OFFERING**



## BENEFIT 01

**LAUNCH  
BENEFIT**

**2X**

**INR 10 LACS**

**BENEFIT FOR  
5 LACS - PASS**

## BENEFIT 02

Pay **10%** now

— & —

Enjoy **0** Pre-EMI for next 18 months



## BENEFIT 03

Enjoy

**ZERO**

stamp duty benefits



# UNVEILING THE FINAL LAUNCH PRICE



# YOUR S-CLASS HOME

AT A DREAM PRICE

2 BHK WITH DECK STARTING **1.47 CR\*** (ALL IN)



# ATTRACTIVE SPOT BOOKING BENEFITS



# YOUR S-CLASS HOME

AT A DREAM PRICE

2 BHK WITH DECK STARTING **1.47 CR\*** (ALL IN)

CUSTOMERS TO GET **5 LAKHS** VOUCHER ON SPOT BOOKINGS (UPTO 28<sup>th</sup> NOV)



Zero Stamp Duty

Pay 10% now & no Pre-EMI for 18 months



Piramal  
**revanta**  
MULUND

**THANK YOU**

The furniture, items, decorative items, shades, and other details herein are only for indicative purposes and do not form part of the standard specifications/amenities to be provided. Outside Views are subject to changes depending on flat location and other factors.

The amenities/facilities shown are common to the entire project and would be provided in the common amenity/facility space.

Piramal Revanta Tower 4 MahaRERA Registration No. - P51800031310 MahaRERA website: <https://maharera.mahaonline.gov.in> Project is mortgaged to IndusInd Bank Ltd. and other member lenders.