



SS LIFE SPACES

→ Building Space for Life ←

Since 1997



**BALAJI
SARVODAY**
LIFESTYLE REDEFINED

Come Home To Life



* Images are only for representation Purpose



A home goes beyond just luxury and style; it's emotional, spiritual, aspirational, inspirational and recreational in the hearts and minds of families shifting into it.

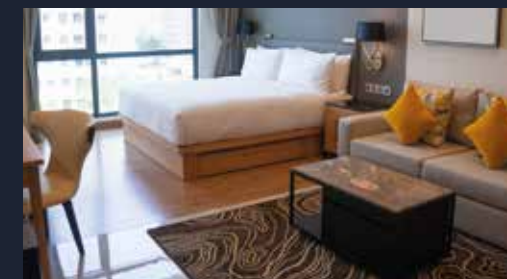


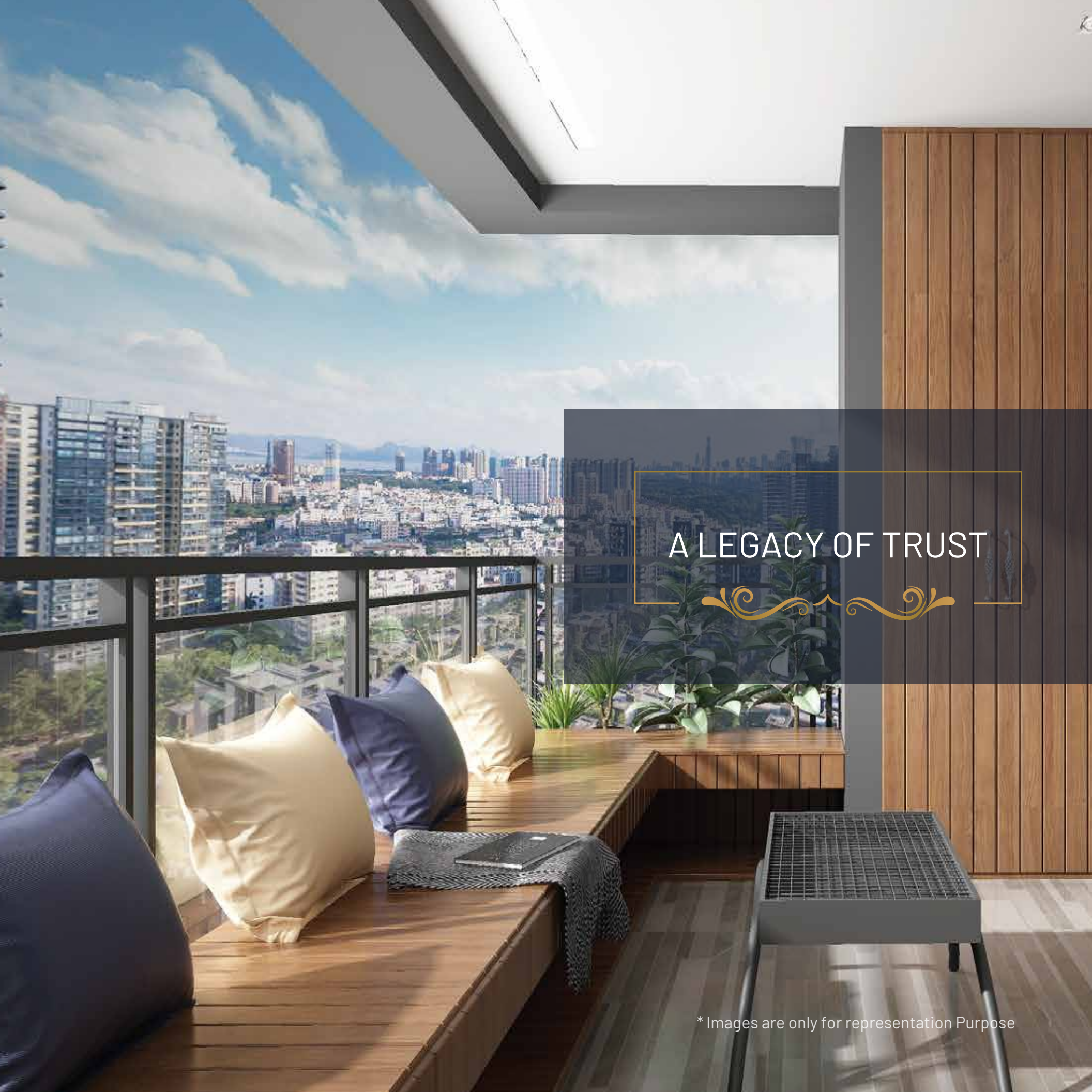
It represents the realisation of a LIFE goal through SPACE that complements it.

Shifting into its pristine ambiances means embracing the comforts of extravagance, the expanse of exclusivity, the square feet of real value, the air of freshness, the views of serenity, the fragrances of nature,



the wellness of lifestyle amenities, the grandness of external lobbies and the fittings of branded fixtures. Yes, a home has to be 'Sarva Gunn Sampann'.





A LEGACY OF TRUST



At SS Life Spaces, we are marking our silver jubilee year in lending the golden glow of happiness onto the faces of 2000+ families living in our lifespaces. Our landmark projects spread across Dombivli, Kalyan and Thakurli have and continue to redefine the concept of 'affordable luxury' through new-age integrated residential complexes that offer the best-in-class wellness lifestyle facilities like recreational gardens, health clubs, state-of-the-art gymnasiums in almost all our projects. Here's looking forward to infusing more LIFE and SPACE to our lifestyle destinations in the coming years.



* Images are only for representation Purpose

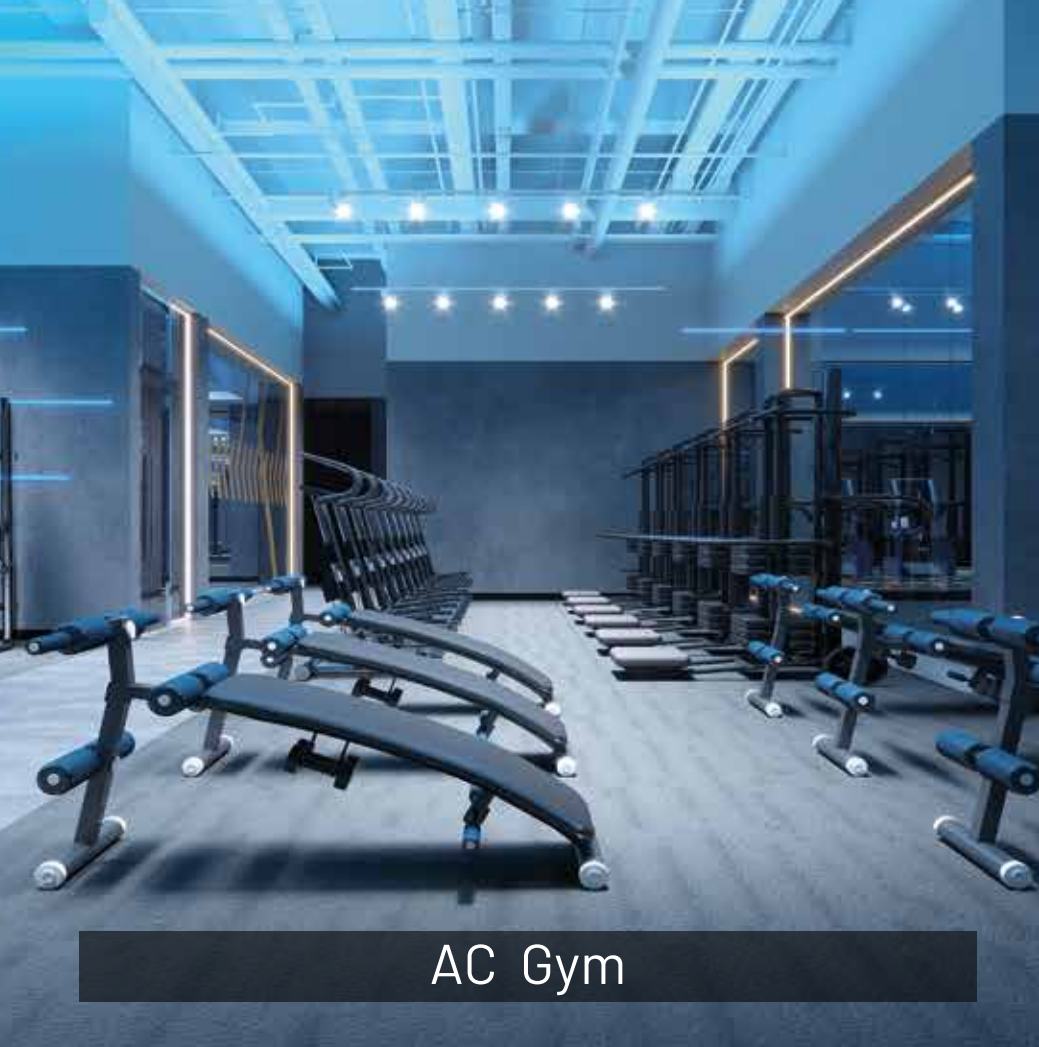
1 BHK , 2 BHK & 3BHK Luxurious Life Spaces
Presenting your life 's high rise



Seeking the wealth of HEALTH? join the CLUB



* Images are only for representation Purpose



AC Gym



Swimming Pool



Multi Purpose Play Court



Gazebo Sit Outs



Billiard Room



Festive Zone with Stage



Video Door Phone



Children's Play Area

* Images are only for representation Purpose

WELLNESS LIFESTYLE AT ITS RECREATIONAL BEST



* Images are only for representation Purpose

WALLS

Weather Resistant Acrylic Paints on External Walls | Top-of-the-line Putty finished paints on Internal Walls
Tic Tac zone | Senior Citizen Seating Area | Pergola Pathway | Elegantly designed false ceiling in Living & Bedrooms

POWER

EV Charging Points | Power Back-up for Common Areas | Adequate Electric Points for AC, TV, Lights, Refrigerator
Geyser & Water Purifier | Electric Meter Room | Energy Power

FLOORING

Vitrified Flooring in the flat | Ceramic Tiles for Balconies | Anti-skid Tiles in Bathrooms

SECURITY

Video Door Phone | Fire Fighting System | Intercom Facility | 24x7 CCTV Surveillance

ENERGY

Vaastu Compliant Homes | Living Rooms with Balcony in all flats

DOORS

Laminated Main, Bedroom & Bathroom Doors

RESOURCE

AC Society Office | Rainwater Harvesting System

PARKING

Ample Parking Space | Driver's Room

SANITATION

STP (Sewage Treatment Plant)

WINDOWS

Aluminium Sliding Windows

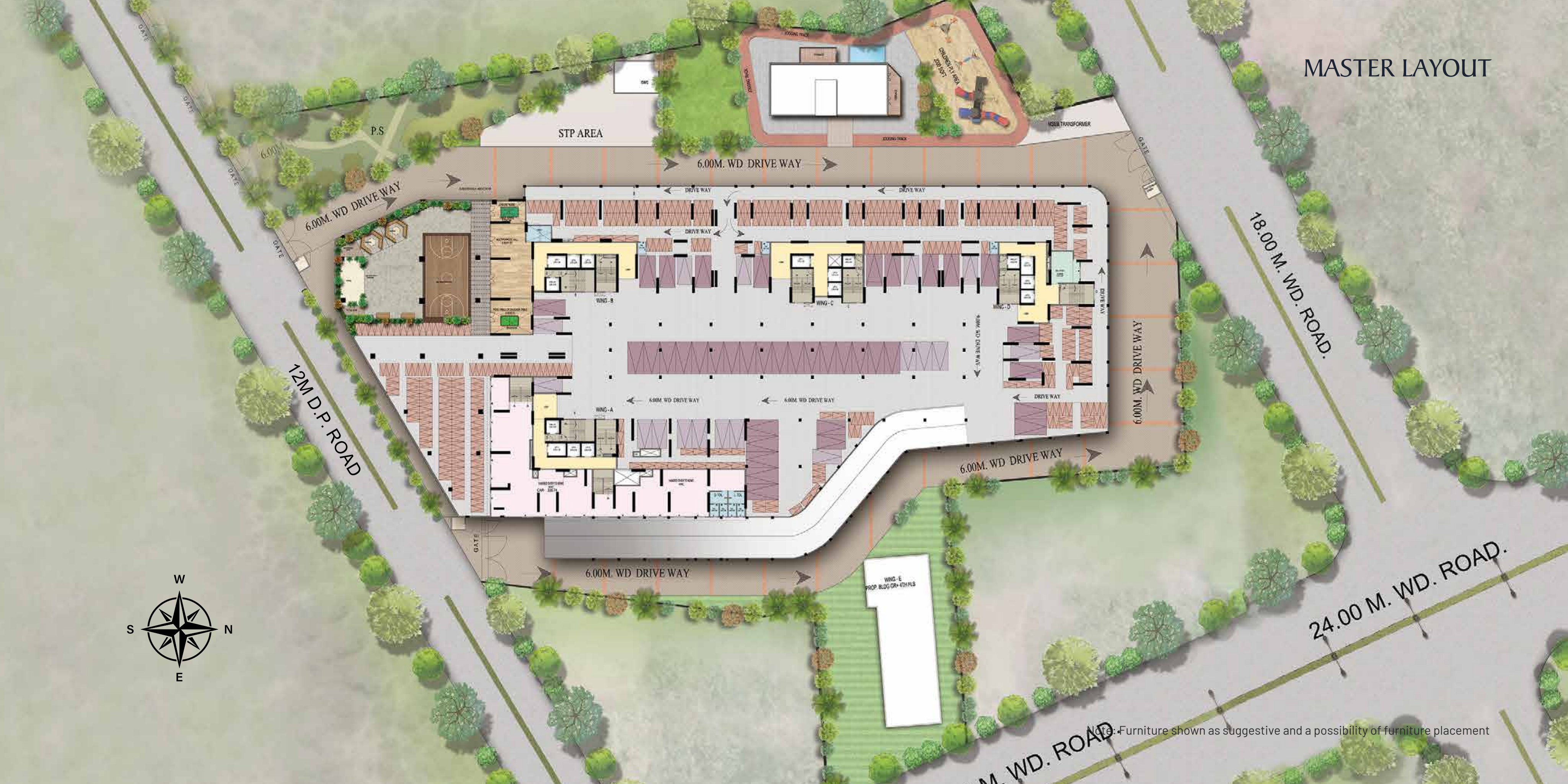
COMMUNITY

Clubhouse | Banquet Hall

AESTHETICS

Designer Entrance Lobby

MASTER LAYOUT

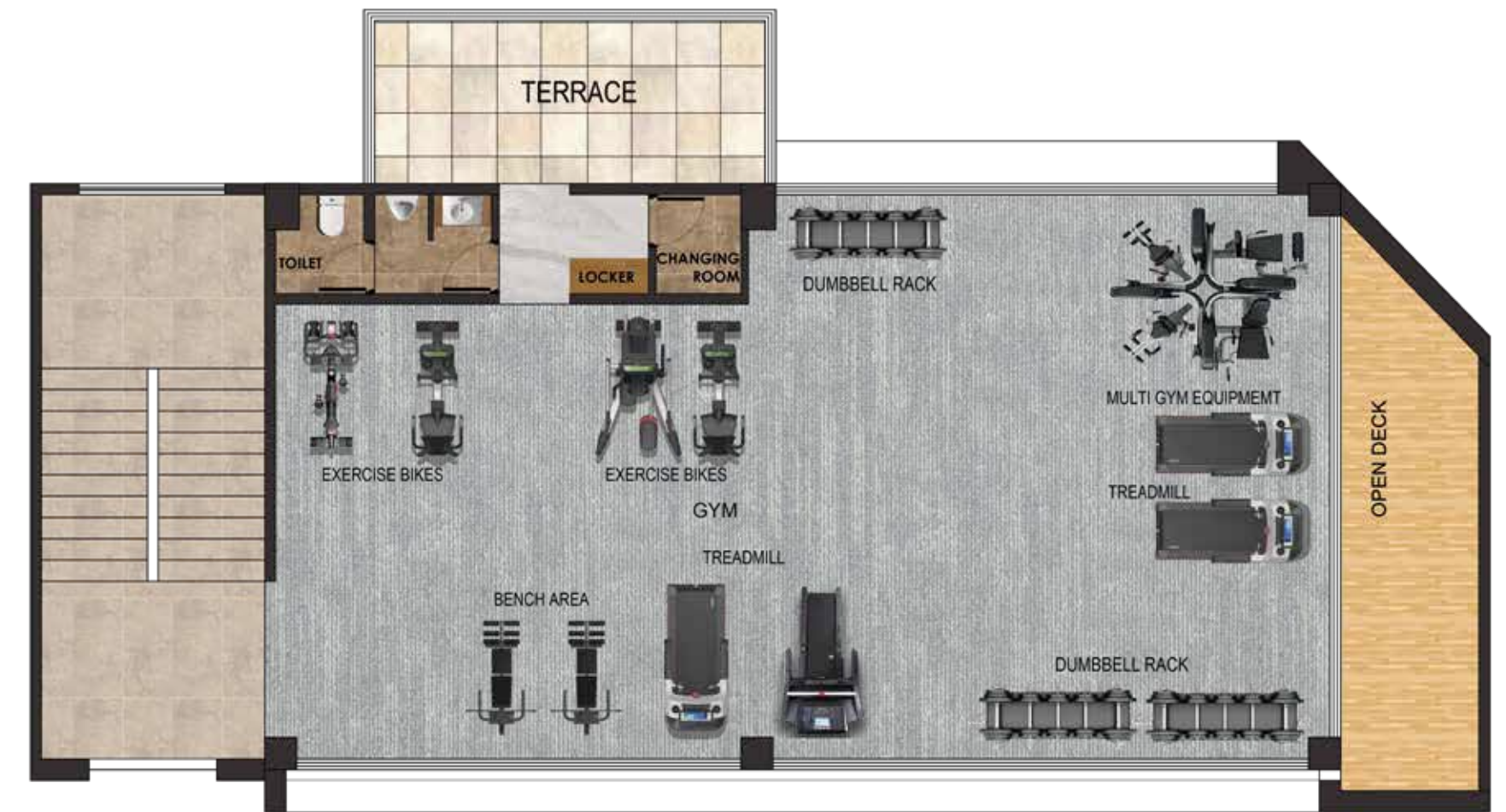


Note: Furniture shown as suggestive and a possibility of furniture placement

CLUB HOUSE GROUND FLOOR



CLUB HOUSE 1ST FLOOR



Note: Furniture shown as suggestive and a possibility of furniture placement

Note: Furniture shown as suggestive and a possibility of furniture placement

THE ELEVATED LIFE



* Images are only for representation Purpose

THE REJUVENATING SPACE

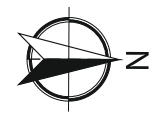


TYPICAL FLOOR PLAN
(WING B)



Note: Furniture shown as suggestive and a possibility of furniture placement

TYPICAL FLOOR PLAN
(WING A)



Note: Furniture shown as suggestive and a possibility of furniture placement

I BHK LAYOUT



Note: Furniture shown as suggestive and a possibility of furniture placement

ISO METRIC I BHK



Note: Furniture shown as suggestive and a possibility of furniture placement

2 BHK LAYOUT



Note: Furniture shown as suggestive and a possibility of furniture placement

ISO METRIC 2 BHK



Note: Furniture shown as suggestive and a possibility of furniture placement

3 BHK LAYOUT



Note: Furniture shown as suggestive and a possibility of furniture placement

ISO METRIC 3 BHK



Note: Furniture shown as suggestive and a possibility of furniture placement



Balaji Siddhivinayak Building (B wing)

Thakurli

Dombivli

Dombivli - Kalyan Road

90ft Road

KALYAN - SHILPHATA ROAD

BALAJI SARVODAY

ONGOING PROJECT

- 01. Balaji Vasant
- 02. Balaji Residency 2
- 03. Balaji Vishant
- 04. Venus SkkyCity
- 05. Balaji Krishna
- 06. Balaji Gopal
- 07. Balaji Kanha
- 08. Balaji Govind (A&B Wing)
- 09. Balaji Siddhivinayak Building - B wing
- 10. Balaji Emerald - Mahalaxmi (A&B Wing)
- 11. Swami Shankaranand Business Center

COMPLETED PROJECTS

- 1. Balaji Aangan Complex
- 2. Trilok Heights
- 3. Balaji Siddhivinayak Complex - A wing
- 4. Balaji Residency
- 5. Srushti Residency
- 6. Balaji Arcade (Kalyan East)
- 7. Balaji Emerald - Padmavati

UPCOMING PROJECTS

- 1. Sonarpada Dombivli (E)
- 2. Nandivali Dombivli (E)
- 3. Usarghar Dombivli (E)
- 4. Chole Thakurli (E)

RAILWAY STATION

Thakurli Station : 5mins
Kalyan & Dombivli Station : 15mins

MARKET

Kashish Super Market : 4mins
Vegetable APMC Market : 7mins
Metro Junction Mall : 4mins
Sarvodaya Mall: 9mins

COLLEGES

R. B. T. College of Education : 5mins
Model College : 5mins
Manjunatha College of Commerce : 3mins
MKMP Senior College of Commerce & Science : 8mins

SCHOOL

Omkar School : 1min
Mahila Samiti : 5mins
Mubarak English High School : 6mins
Mount Bell International : 6mins

MULTISPECIALITY HOSPITAL

Shri Shatayu Multispeciality Hospital : 2mins
Silver Crest Hospital : 3mins
Kusum Maternity Children's & General Hospital : 5mins

TEMPLE

Kalyan, Ulhas River Temple : 1min
Maruti Mandir : 5mins
Shree Swaminarayan Temple : 5mins
Ayyappa Temple : 6mins
Shiv Mandir : 2mins
Hanuman Mandir : 6mins

HOTEL & RESTAURANTS

Bombay Velvet Lounge Bar & Cafe : 2mins
Nakshatra Villagehotel: 3mins
Daawat hotel" 2mins
CIBO Multi Cuisine Family Restaurant and Sports Bar: 2mins
K F C : 5mins

THEATRES

Tilak Cinema : 5mins
SM5 Multiplex : 5mins
Miraj Cinema : 7mins
INOX : 7mins





Unmatched living experience

* Images are only for representation Purpose



MahaRERA Registration No.:
P51700052121
URL-www.maharera.mahaonline.gov.in

Corporate Office Address :

5,6,7 & 8, Padmavati Building, Balaji Emerald, Behind Balaji Aangan Complex, Thakurli (E), 421201.

Site Address :

Balaji Sarvoday, New 90ft Road, Near Balaji Aangan Complex, Thakurli – East, 421201

Office Contact No. :
0251 2971937 / 47

Sales Contact No. :
+91 81042 82606 | +91 76850 01700

Email :
enquiry@sslifespaces.in

Website:
www.sslifespaces.in

Architect:
Sthapatya Nirmaan

RCC Consultant :
Shanti Consultant

Legal Consultant :
Ray Legal

Project By:
Shree Balaji Realty

Disclaimer : The plans, specifications, images and other details herein are only indicative and subject to the approval of the concerned authorities. The developer / owner reserves the right to change any or all of these in the interest of the development. Without prior notice or obligation. Artist's impression is used to illustrate the amenities, specification, image and other details and these may be applicable to select apartments only. Tolerance of +/- 3% is possible in the unit areas on account of design and constructions variances. All brand stated are subject to final decision of project architect. This printed material does not constitute an offer and / or contract of any type between the developer / owner and the recipient. Any purchaser / lessee of the development shall be governed by the terms and conditions of the agreement for sale / lease entered between the parties, and no details mentioned in this printed material shall in any way govern such transactions. Representative Images are only for presentation purpose.

Maha RERA Num
QR Code

