

A PROJECT BY



Developers - **SAILEE DEVELOPERS PVT. LTD.**

A/004, Prathamesh Horizon, Linking Road, New M.H.B. Colony, Opp. Don Bosco School,  
Borivali (West), Mumbai - 400092. Tel No. : 022 - 28699874.

MahaRera Registration No. P51800028896

**SALES CONTACT : +91 7419869999 / 9820938025**

Email : saileedevelopers@gmail.com, Web : www.saileedevelopers.com

ARCHITECT  
RAMESH B. KHANOLKAR  
ARCHITECTS

R.C.C. CONSULTANT  
PATEL & KULKARNI  
CONSULTANTS

LEGAL ADVISOR  
MHATRE LAW  
ASSOCIATES

Raj Graphics - 9869253690

Note : The Developers reserve the right to change plan, specifications and features without prior notice or obligation, at their sole discretion and subject to the approval of the Government Authorities. Specifications, writeup, internal layouts, plans and pictures shown in this booklet are only indicative. All renderings, floor plans, pictures and maps are the artist's conceptions and not actual depictions of the building, its walls, roadways or landscaping.



Reside Among Stars...



1, 3 & 4 BHK Apartment





Prathamesh  
**STAR**

## A Bright Choice

Prathamesh Star introduces you to the true brightness of the stars with the shining exterior & interiors and high-end stary articles used in each flat. It gives you the space to aviate freely without limitations. With specially architectural big rooms and spacious hall feel like you are in the sky. **PRATHAMESH STAR** add a bling of lavishness to your life in the form of:



Location



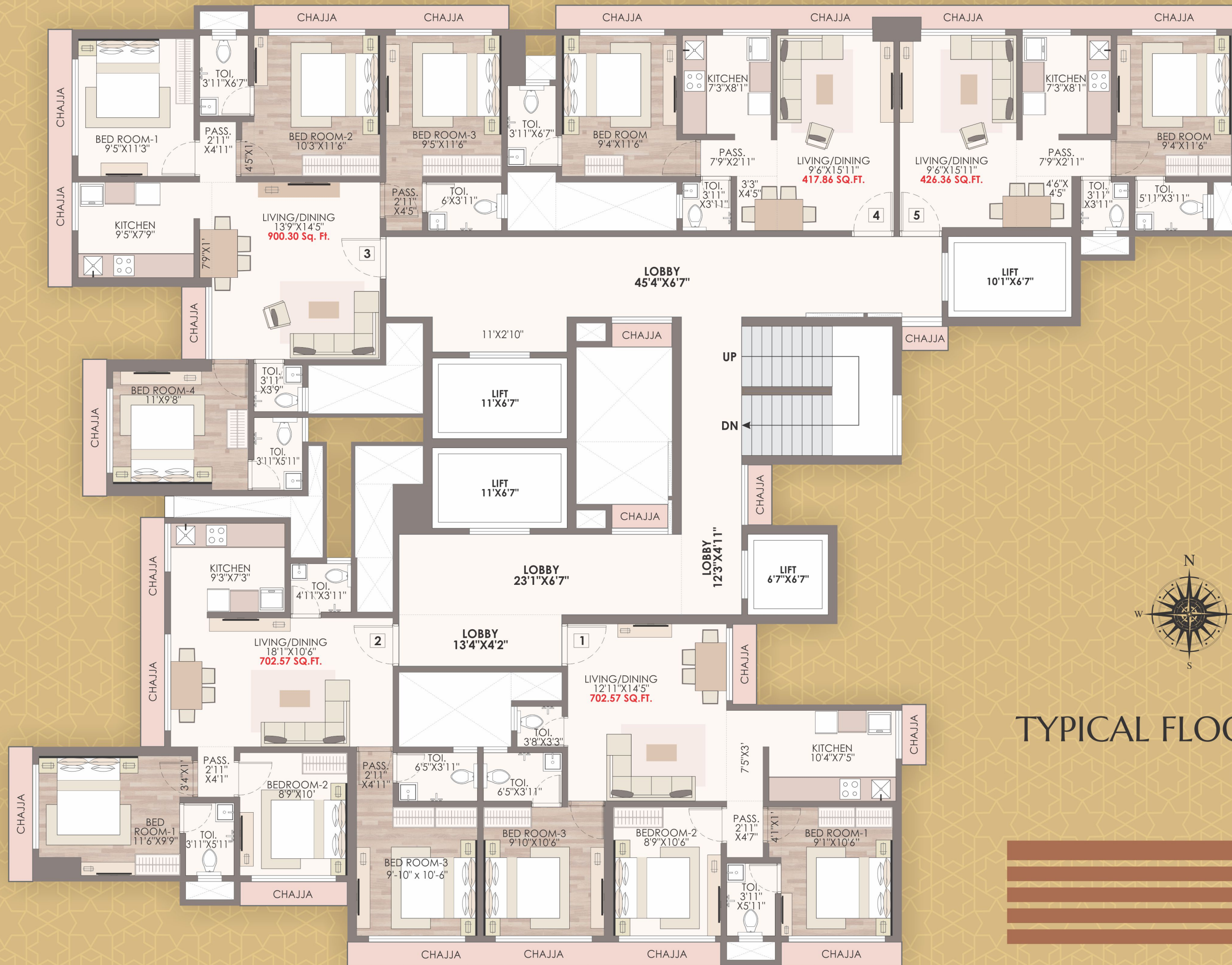
Convenience



Amenities







TYPICAL FLOOR PLAN





4

BHK LUXURIOUS  
RESIDENCES

RERA AREA  
900.30 SQ.FT.



3

BHK LUXURIOUS  
RESIDENCES

RERA AREA  
702.57 SQ.FT.

1

BHK ELEGANT  
RESIDENCES

RERA AREA  
426.36 SQ.FT.



1

BHK ELEGANT  
RESIDENCES

RERA AREA  
417.86 SQ.FT.





## INTERNAL AMENITIES



### Structure

Earthquake resistant R.C.C. framed structure.



### Doors

Wooden door frame. Hot-pressed solid core flush door with laminate finish brass hardware fittings.



### Wall & Ceiling

Internal wall with gypsum finish and luster paint ceiling with gypsum finish and plastic paint.  
External walls sand-faced plaster with texture finish and acrylic paint.



### Flooring

Vitrified tiles in living, dining, kitchen, bedrooms and corridors.  
Wooden finish tile in master bedroom.



### Windows

White colored anodized aluminium full height sliding windows with reflective glass mosquito net shutter.  
Granite/marble window sills Toughened glass railing for window.



### Electrical Fittings

Sufficient electric point with branded modular switches.  
Concealed fire resistant copper wiring.



### Kitchen

Granite platform with stainless steel sink. Additional granite service platform.  
Vitrified tiles on walls up to door height.



### Toilets

Designer vitrified tiles on walls up to door height.  
Anti skid ceramic floor tile in all toilets. Granite counter basin. Geyser in toilets  
Branded sanitary ware & CP fittings.  
Hot & cold water mixer shower panel in master toilet.

## PROJECT FEATURE



Car Parking



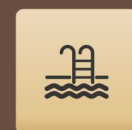
Entrance Lobby



CCTV Camera



Branded Elevator



Swimming Pool



Gymnasium



Play Area



It's Bright and  
Rare\*\*\*



## LOCATION MAP



Site Add. : "Prathamesh Star", New Link Road, Borivali (W), Mumbai-400092.

Prathamesh Star is located at Borivali (W) which is renowned for its excellent commercial, residential and social infrastructure. The development is well planned and its strategic location shall ensure that major life-enhancing convenience would be reachable within a few minutes from your doorstep. The project is well connected to various land mark like Railway Station, Malls, Hospitals, Colleges, Corporate offices, Restaurants etc..

### NEARBY LOCATION

	700 METER		1.5 K.M
	500 METER		0.5 K.M
	800 METER		1.0 K.M

### DISTANCE

Borivali Station	4mins (Drive)
Don Bosco Metro Stn.	5 mins (Walk)
Kastur Park Metro Stn.	5mins (Walk)
S.V. Road	3mins (Drive)
Link Road	2mins (Walk)