



ZEN ELITE

KHARADI

Indulge in the Realm of Tranquility

Premium 2 & 3 BHK Riverside Homes





— “ —
*When you make peace with yourself,
you make peace with the world.*

— ” —
- Preah Maha Ghosananda





Even the Silence Sings Melodiously Here

Welcome to a place that sings the tune of serenity. It's designed to be your escape from the chaos outside; lodging here will keep you in the heart of the liveliest part of the city - Kharadi. To unlock the path to eternal peace, come home to Zen Elite - a sphere where tranquility prevails, and you thrive.



Kharadi - Eastern Pune's Axis of Growth



When it comes to choosing your new home, its location matters the most. If it's near your workspace, you might have to go the extra mile to get to the mall. But Kharadi is different. There's a reason it's the most loved residential area. It keeps you close to all-things-necessary — offices, educational institutes, healthcare, and entertainment avenues.

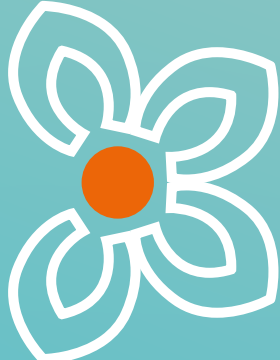
The best part? Kharadi, due to its swanky business parks and flawless connectivity, has emerged to be eastern Pune's fastest growing suburb.

- Close to Koregaon Park, Hadapsar, Viman Nagar
- Home to world-class hotels, top IT offices, shopping avenues
- Major metropolitan corridor for growing start-ups
- One of the fastest-growing developing areas
- Number 1 choice for investors and residents



KHARADI

WTC



EON

Gera
Commerzone
Kharadi

Reserve
Forest
Land

Zen Elite



EON
Waterfront

Panchshil
Trade Center

Mula-Mutha River

Best Location in Pune East



Lies in the heart of Kharadi



Opposite EON IT Park,
near WTC, Panchsil Trade Center



Nestled in the warmth of nature



Right next to Mula-Mutha River

A peaceful lakeside scene. In the foreground, a wooden dock made of weathered planks leads from the bottom center towards the middle of the frame. The dock is flanked by tall, vibrant green grasses. Beyond the dock, a calm lake reflects the sky and the surrounding trees. The far shore is lined with a dense forest of green trees. The sky is a pale, hazy blue with soft, wispy clouds. The entire scene is framed by the dark green leaves and branches of trees in the upper and side corners, creating a sense of being in a secluded, natural setting.

Breathe in Calmness.
Leave Chaos Where it Belongs.

It's said that if you're at peace with yourself, you're capable of achieving great things. This Zen address embodies a sense of serenity, security and success. Likewise, Zen Elite is a delight for its residents. It stands on a lush patch surrounded by greenery, next to the zestful Mula-Mutha River — for you to experience peace in its purest form.



Lead a
healthier life



Live away from
the city pollution



Get rid of
everyday stress



Boost your energy
and focusing abilities



Pune International Airport

VIMAN NAGAR

- Hyatt Regency
- Novotel
- Phoenix Marketcity Mall
- PVR

Four Points by Sheraton Hotel

Weikfield IT Park

PVR / Cinemax Inorbit

KALYANI NAGAR

WADGAON SHERI

CHANDAN NAGAR

Radisson Blu Hotel

Rising Medicare Hospital

Reliance Smart
Shree Hospital

Gold Rush Hospital

Motherhood Hospital

Fairfield by Marriott

Columbia Asia Hospital

Bollywood Multiplex

Victorious School
Kothari International School

Global High Street

Phoenix World School

Dhole Patil School For Excellence

Gera Commerzone Kharadi

Central Bus Station Kharadi

EuroSchool

Oxford World School

Zen Elite

EON Waterfront

Panchshil Trade Center

Mula-Mutha River

KOREGAON PARK

MUNDHWA

KESHAV NAGAR

Manjri Road

GHORPADI

← Towards HADAPSAR

Amanora Park Town

Magarpatta IT Park
Magarpatta City

Seasons Mall
Cinepolis

Amanora Mall
Inox

MANJRI

Stay Calm. Stay Connected to the World.



EDUCATION

- EuroSchool: 1.1 km
- EON Gyanankur English Medium School: 1.6 km
- Phoenix World School: 1.8 km
- Dhole Patil School For Excellence: 1.9 km
- Oxford World School: 2 km
- Kothari International School: 2.7 km
- Victorious School: 3 km



HEALTHCARE

- Gold Rush Hospital: 1.9 km
- Shree Hospital: 2 km
- Motherhood Hospital: 2.4 km
- Rising Medicare Hospital: 2.4 km
- Columbia Asia Hospital: 3.1 km



WORKPLACES

- EON: 700 m
- Gera Commerzone Kharadi: 1 km
- WTC: 1.6 km
- Zensar Technologies: 1.7 km
- Weikfield IT Park: 5.6 km
- Magarpatta IT Park: 6.8 km



SHOPPING

- Global High Street: 1.6 km
- Reliance Smart: 2 km
- Phoenix Marketcity: 5 km
- Seasons Mall: 6 km
- Amanora Mall: 6 km



ENTERTAINMENT

- Bollywood Multiplex: 3.7 km
- PVR / Cinemax - Inorbit: 5.1 km
- PVR - Phoenix: 5.5 km
- Cinepolis - Seasons Mall: 6 km
- Inox - Amanora Mall: 6 km



HOTELS

- Fairfield by Marriott: 2.4 km
- Radisson Blu Hotel: 2.5 km
- Four Points by Sheraton Hotel: 4.7 km
- Novotel: 6.2 km
- Hyatt Regency: 6.2 km



CONNECTIVITY

- Central Bus Station Kharadi: 1.5 km
- Ahmednagar Highway: 2.5 km
- Hadapsar Railway Station: 4.8 km
- Pune International Airport: 8.5 km
- Pune Railway Station: 11.2 km

Tread Your Way to a Balanced Lifestyle



The Zen Philosophy – For a Balanced Mind and Body

Our goal is to serve you with the perfect balance of life. Thoughtfully designed for a fine lifestyle, Zen Elite is a sight to behold.

It harmonizes each moment with its serene location, strategically curated amenities, unique landscape architecture, and open spaces that embody a sense of calm every day.

We've made sure that your body, mind, and soul ring the chords of peace like never before. So that when you get home after a hard day at work, you get to unwind in the most magical way. To make life itself a Zenful experience, come home to this cocoon of calm.

It's our promise to give you a reason to celebrate with all your heart.







Your Perfect Dose of Peace Starts Here

The amenities are carefully thought through to keep you active yet relaxed. Whatever your state of mind, these facilities will transport you to a world of no boundaries. Every member of your family will live to the fullest – and will get to leave behind the monotony of mundane tasks. Now, you won't have to chase peace, because here, the heart finds happiness easily.

Sway Away Your Tension in a Moment

Podium Level Amenities

Table Tennis | Yoga-Zumba Hall | Gym | Day Care | Co-working Space | Mini-theatre | Library / Reading Hall | Indoor Games | Water Feature | Badminton Court | Futsal Court | Club House Party Lawn with Buffet Area | Flag Hoisting Area | Play Area (Rubber Floor) | Stage | Basketball Court | Hotfoot Area / Multipurpose Court | Box Cricket | Amphitheatre | Squash Court
Gazebo | Salon | Parlour | Spa Area



Multipurpose Court



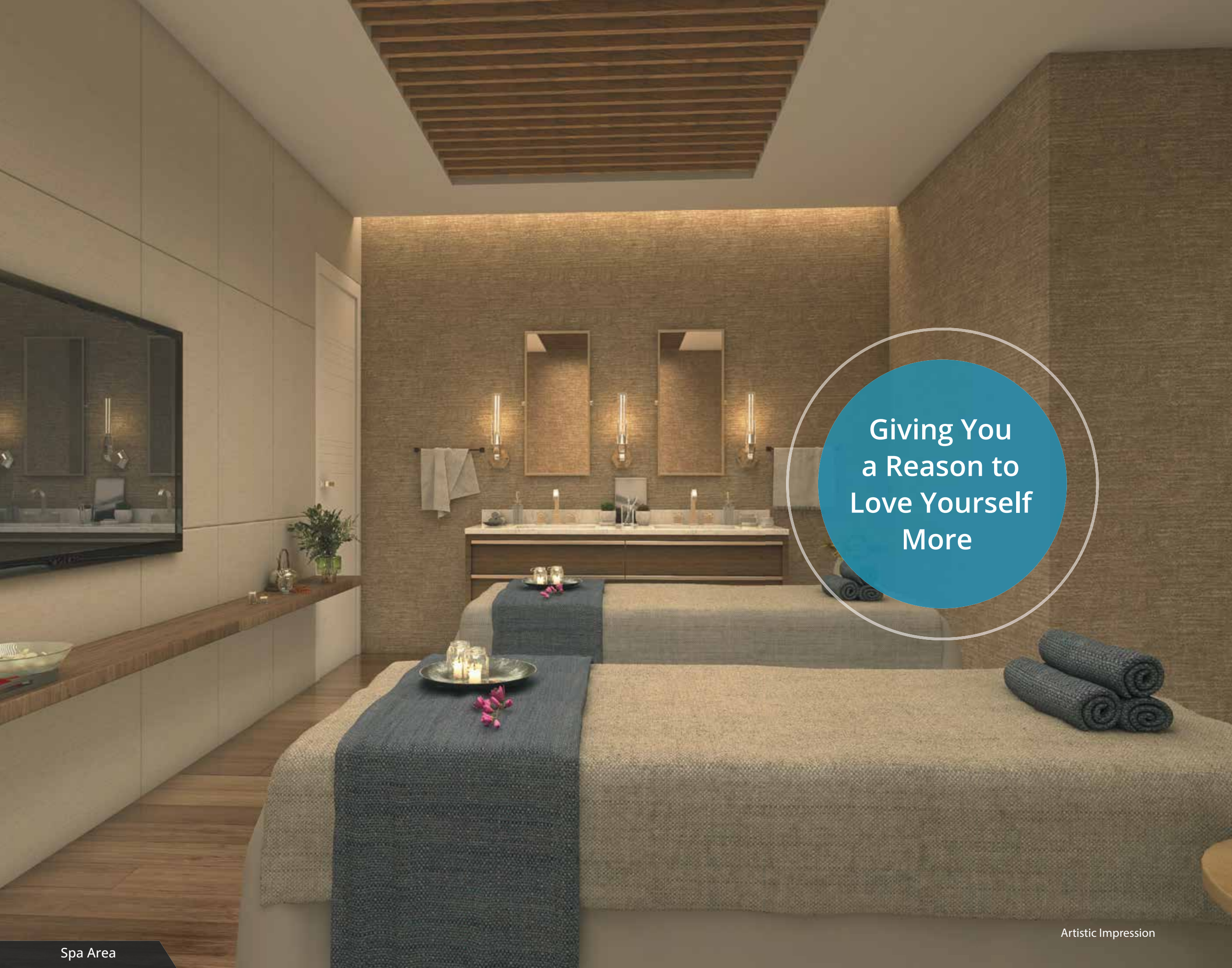
Indoor Games



Kids' Play Area



Delight Will
Follow Wherever
You Go



Giving You
a Reason to
Love Yourself
More

New-age
Working Culture
Made Easy





Climb Up to the Luxury of a Balanced Lifestyle

Rooftop Level Amenities

Swimming Pool | Jacuzzi | Pool-side Party Area | Hammock Garden | Pergola / Trellis | Stone Feature | Music Garden
Yoga-Meditation Area | Gazebo | Lawn | Bridge | Sit-outs | Open Gym





Make
Every Day Feel
Like a Refreshing
Retreat



Hammock Garden



Watch Your
Life Take Shape
Even With Your
Eyes Closed

Artistic Impression

Yoga-Meditation Area

A Slice of Happiness for Everyone in Your Life

Ground Level Amenities

Main Entrance with Grand Canopy | Feature Wall | Dog Park | Acupressure Track | Pergola | Sit-outs | Bus Bay

An artistic rendering of a modern building's main entrance. A large, dark grey archway with white diagonal slats frames the view. To the right, a white guardhouse with a blue 'ZEN ELITE' logo and a security guard in uniform stands. A silver car is driving on a paved road that features a decorative geometric pattern on the ground. The scene is surrounded by lush greenery and trees, with a clear blue sky in the background.

The World
of Wonders
Unfolds Here

Unlock the
True Nature
of Calm



Striking a Steady Balance in Every Moment

- **Branded Inside-out**

Fine specifications – doors, paints, flooring are put together to assure you a zenful forever

- **Supreme Security**

Biometric locking system in main doors, CCTV monitoring in common areas, video door phone in every Zen Elite residence, etc. give you a reason to sleep carefree when you're here

- **Premium Fittings**

Best-in-class tap fittings in washrooms, kitchens are installed for seamless functionality and a rich experience altogether

- **Unlimited Power**

Genset backup for all flats to light point to ensure uninterrupted power supply

- **Sustainable Luxury**

Features like rainwater harvesting, STP recycled water for flushing, organic waste converter, fruit-bearing trees, etc. give Zen Elite an edge over others – and its residents a breath of happiness



Premium Paint



CCTV Monitoring



Genset Backup



Rainwater Harvesting

All Images Are Artistic Impressions

Our Perfection = Your Eternal Peace

STRUCTURE & BLOCKWORK

- RCC framed structure, aluform shuttering (hybrid structure format)
- Masonry walls in 125mm AAC blocks (Autoclaved Aerated Concrete Blocks)
- Birla Super Shakti, Ambuja, Vasavdatta / equivalent type cement
- Fe 500 steel

PAINTING & FINISHING

- Interior Home Walls:
 - Internal wall with Gypsum finish of Gyproc / Buildcon / equivalent
 - Dulux / Asian Paints / Nerolac / equivalent for walls and ceiling
- Other Interior Walls:
 - Internal plastering with Gypsum finish of Gyproc / Buildcon / equivalent
 - Dulux / Asian Paints / Nerolac / equivalent textured paint / equivalent with scratch finish near lift lobbies
 - Textured paint with scratch finish texture
- External Walls:
 - External plaster with double coat, sand-faced plaster with chicken mesh
 - Dulux textured paint and Dulux Weather Shield / equivalent for all exterior walls

FLOORING

- 600 mm x 1200 mm vitrified flooring (Kajaria / equivalent)
- Anti-skid flooring for bathroom and attached terraces

WATERPROOFING

- Brickbat & chemical waterproofing for attached terraces
- Chemical waterproofing in toilets

DOORS

- Main Door:
 - Century / Greenply / equivalent main door with ply frame
 - Yale / equivalent biometric lock
- Bedroom Doors:
 - Bedroom door with plywood frame with lamination
 - Mortise lock / Europa cylindrical lock
- Toilet & Balcony Doors:
 - Laminated door and door frame with granite
 - Europa / equivalent Mortise lock / cylindrical lock
- Balcony:
 - Folding doors for better ventilation
 - UPVC sliding doors with mosquito net

LIFTS

- Kone / Schindler / Thyssenkrupp / equivalent lifts
- Automatic standard make lift with power back up

SECURITY

- CCTV monitoring in common areas
- Fire alarm & fire-fighting system as per the law
- Boom barrier at each entry and exit
- Video door phone in each home

WINDOWS

- UPVC sliding windows with mosquito net

RAILING

- 1200 mm high glass railing with SS grab bar

COMMON FEATURES

- 1 drivers' toilet to be provided in each building
- Kirloskar / equivalent genset back-up system
- Osram / equivalent LED-based fittings for common area lights
- Attractive entrance lobbies

KITCHEN

- Franke / Nirali / equivalent kitchen sink (kitchen and dry balcony)
- Kajaria / Nitco / equivalent make up to 2 feet 600 x 1200 mm tiles for kitchen walls
- Jaquar Kubix Prime / Kohler / equivalent tap fittings
- Granite kitchen otta

ENVIRONMENTAL FEATURES

- Rainwater harvesting

- STP recycled water for flushing
- Organic waste converter
- Water treatment plant
- Fruit bearing trees

WASHROOM

- Kajaria / Nitco / equivalent make 400 mm X 800 mm anti-skid tiles toilet flooring
- Kajaria / Nitco / equivalent make 400 mm x 800 mm for toilet walls
- Jaquar / Kohler / equivalent basins & WC
- Jaquar Aria series / Kohler / equivalent tap fittings
- Slung plumbing in Geberit fittings
- Openable false ceiling in washroom
- Provision for exhaust fan
- Solar water heating supply in master bedroom

ELECTRIFICATION & CABLING

- Polycab / Finolex / concealed wiring
- Schneider Vivace series / Legrand Mylinc / Livia / equivalent
- Provision for exhaust fan in kitchen & toilets area
- Adequate electrical points
- TV & telephone points in living room and TV points in the master bedroom
- AC point in master bedroom, provision in other bedrooms and living room
- All flats with genset backup to light points

Cut Section & Master Layout

2 BHK PRIME (TOWER A1/A3: CARPET AREA - 838 SQ. FT.)

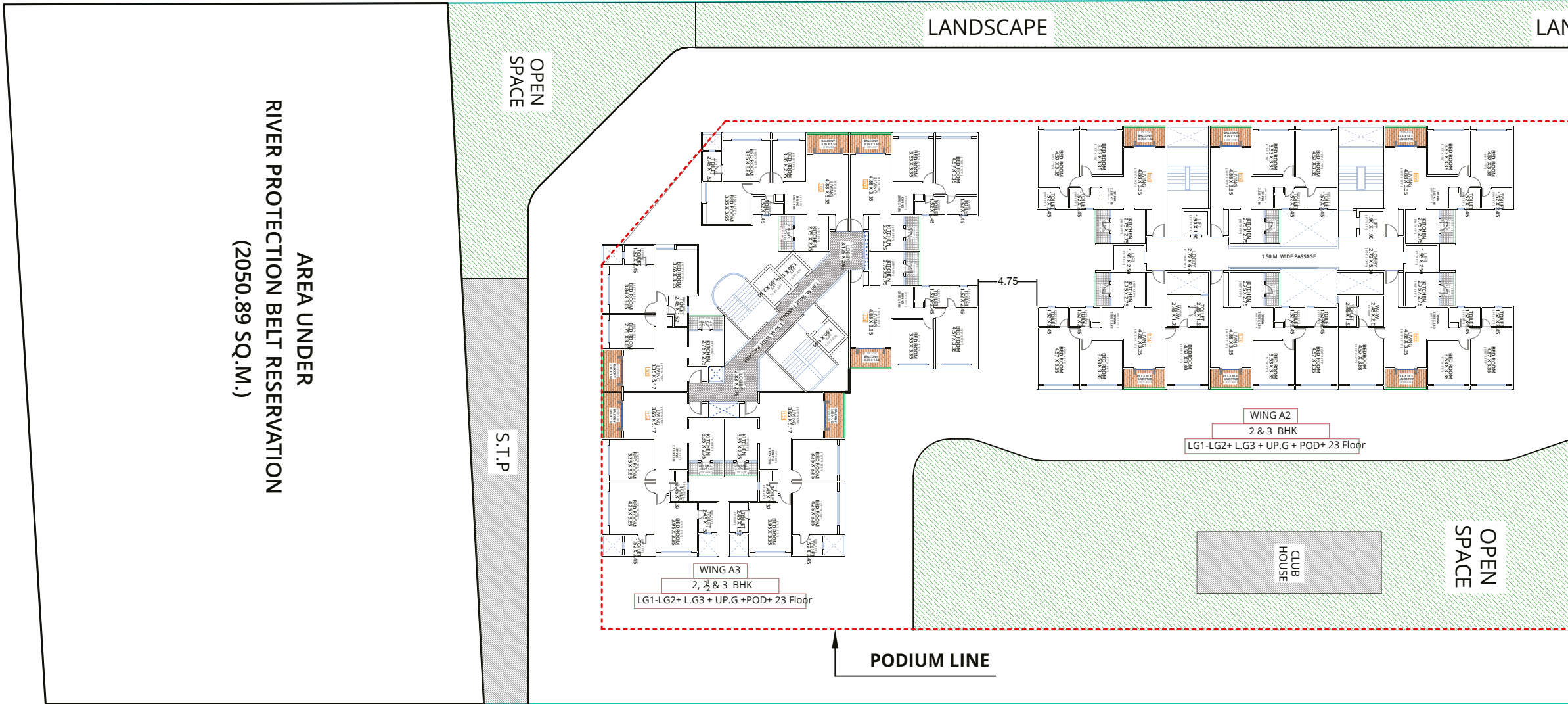


3 BHK SMART (TOWER A1/A3: CARPET AREA - 936 SQ. FT.)



3 BHK PRIME (TOWER A1/A3: CARPET AREA - 1120 SQ. FT.)





AREA UNDER
RIVER PROTECTION BELT RESERVATION
(2050.89 SQ.M.)

OPEN
SPACE

S.T.P

LANDSCAPE

LAN

OPEN
SPACE

WING A2
2 & 3 BHK
LG1-LG2+ L.G3 + UP.G + POD+ 23 Floor

WING A3
2, 2 & 3 BHK
LG1-LG2+ L.G3 + UP.G +POD+ 23 Floor

CLUB
HOUSE

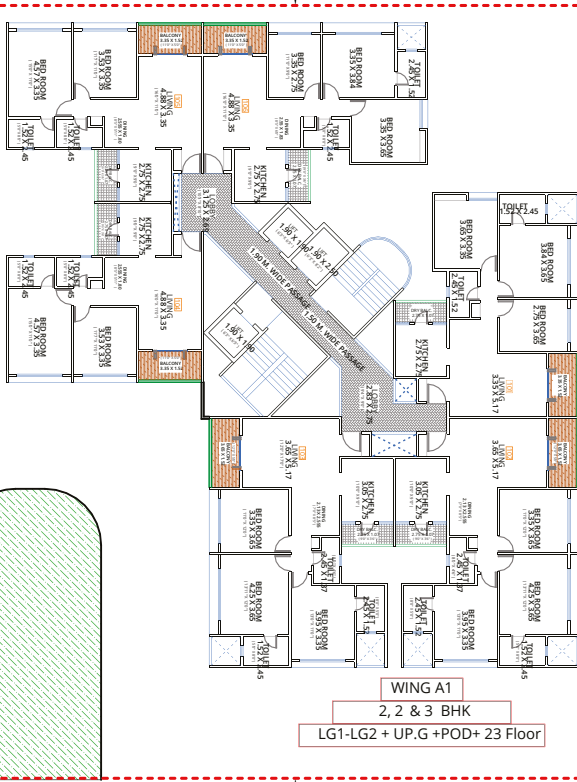
PODIUM LINE

4.75

1.50 M. WIDE PASSAGE

LANDSCAPE

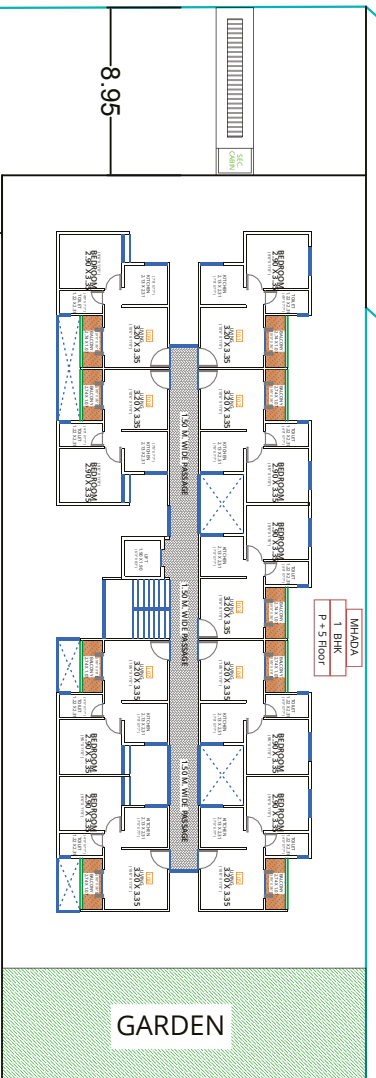
PODIUM LINE



WING A1
2, 2 & 3 BHK
LG1-LG2 + UP.G + POD + 23 Floor

PODIUM LINE

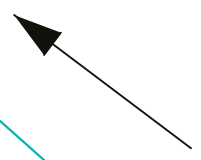
5.75



GARDEN

8.95

IMHADA
1 BHK
4 - 5 FLOOR



12.0 M WIDE INTERNAL ROAD

SUB PLOT - 2



AREA UNDER R/W

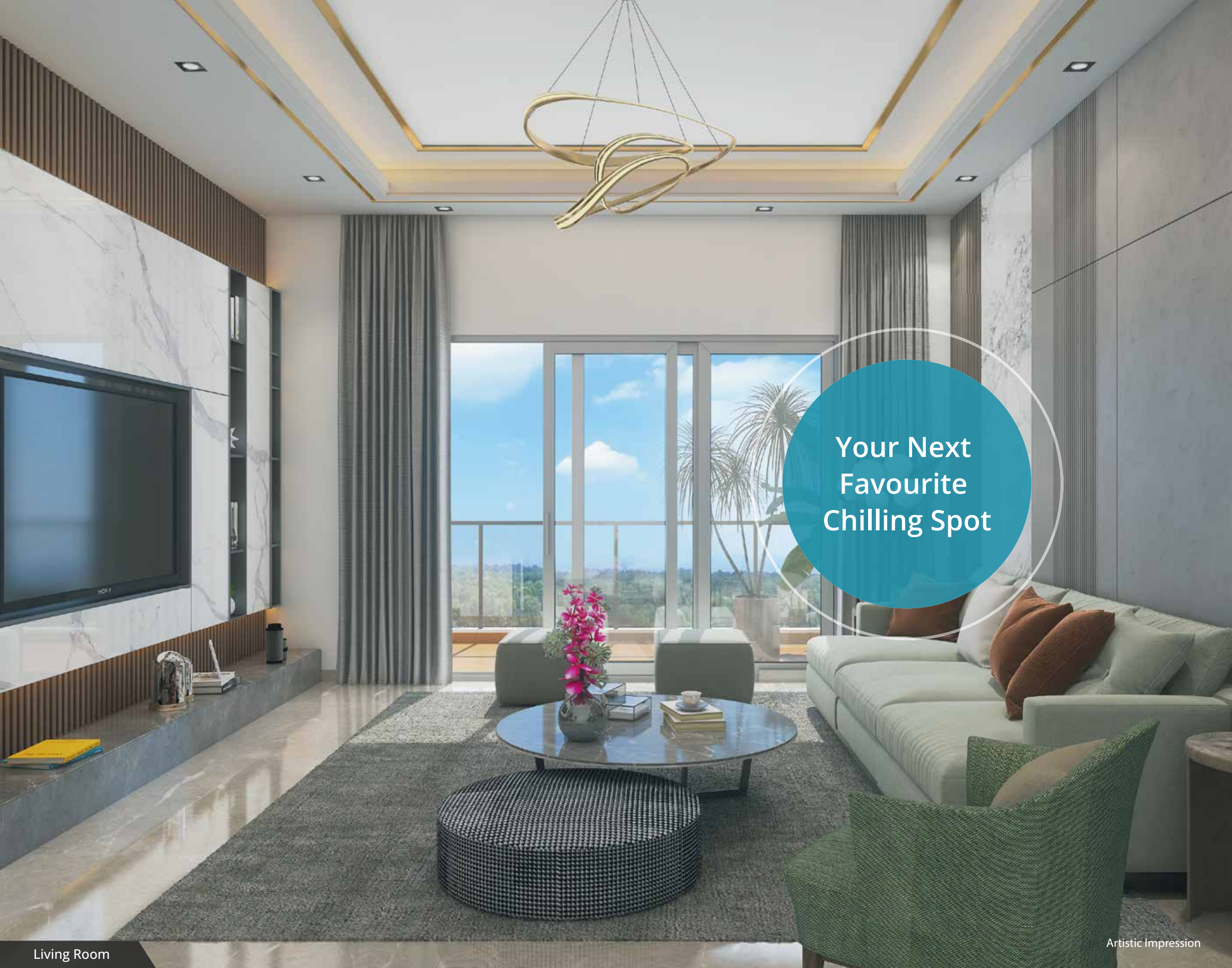
PROPOSED 30.0 M WIDE D. P. ROAD



Live Life
the Elite Size



Serve Splendour.
Savour Serenity.



Your Next
Favourite
Chilling Spot



Every Day
is Going to Be an
Aromatic One



ZEN
ESTATE
KHARADI



Artistic Impression

We're Committed to Deliver Before Time

It's said that actions speak louder than words. Hence, the success of Zen Estate is a testament to the fact that we relentlessly commit to delivering residences on time. In fact, the project was delivered a year prior to the day promised. It later went on to bag three awards in the year 2020.

If you missed the chance earlier, join the league of Zen families now. Choose Zen Elite. Needless to say, your new abode will be delivered as promised.



Backed by the Best in the Game





Mahalaxmi Group stepped into the business of bringing smiles to people back in 2001. Focused on integrity, the group carved its identity as one of Maharashtra's finest steel manufacturers and exporters before taking over the real estate industry by storm in 2010. Now, after delivering 1.1 million sq. ft. worth of calm, benchmarked residences to 1500+ families and commercial projects, it now stands as Pune's one of the most loved builders.



Kohinoor Group has proudly stood tall as a leader in Pune's real estate development sector for 38 years. Over the years, Kohinoor carved a name for itself as a solid, trustworthy construction brand. Today, the group has developed and delivered over 8 million sq. ft. across Pune and has over 6.5 million sq. ft. of spaces currently under development. The group has laced the lives of 6000+ Pune-kars with unlimited happiness.



Buddha said,
"Your home is where
your thoughts find peace."

So, we're here with your
new Zen home in Kharadi.






ZEN ELITE

KHARADI

Project address: Zen Elite, Survey No. 70/1,
Next to EON Waterfront, Grant Road, Kharadi,
Pune - 411014

 MaharERA No.: P52100033357. Available at website:
<https://maharera.mahaonline.gov.in>



A PROJECT BY:

