

In Association With



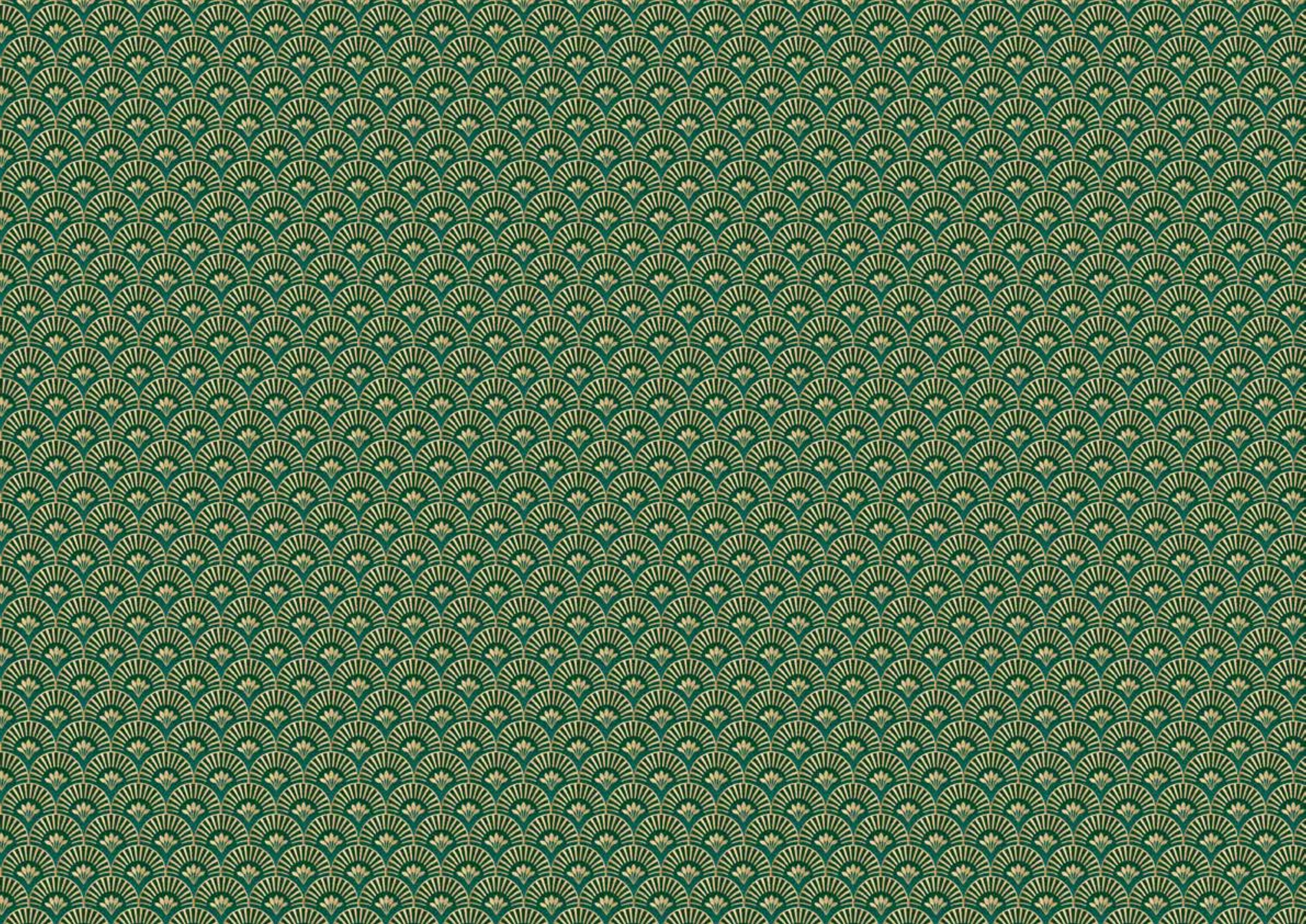
The project is registered as Godrej Five Gardens on MAHARERA bearing Registration No. P51900048424 available on MAHARERA website (<https://maharera.mahaonline.gov.in>). The Project is being developed by Godrej Projects Development Limited (GPDL) in association with Eskays Land Developers Private Limited (Eskays). Both Eskays and GPDL are registered as Promoters under MAHARERA with respect to the Project. Site address is Agrawal Nagar, Matunga East, Mumbai, Maharashtra 400059 and registered office of GDPL is Godrej One, 5th floor, Projshanager, Eastern Express Highway, Vikhroli (East), Mumbai 400 079. The Sale is subject to the terms of the Application Form and Agreement for Sale. All specifications of the unit shall be as per the Agreement for Sale. Customers are advised to apprise themselves of the necessary and relevant information of the project prior to making any purchase decisions. The official website of Godrej Properties Limited is www.godrejproperties.com. Please do not rely on the information provided on any other website.

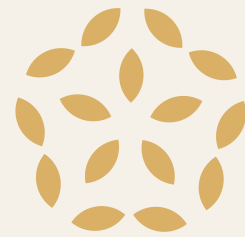
T&C Apply : Means : *No warranty is expressly or impliedly given that the completed development will comply in any degree with such artist's impression/stock image as depicted. The furniture, accessories, paintings, plantations, landscaping, items, electronic goods, additional fittings/fixtures, decorative items, false ceiling including finishing materials, specifications, shades, sizes and colour of the tiles, etc. shown in the image are only indicative in nature and are only for the purpose of illustrating/indicating a conceived layout and do not form part of the standard specifications/amenities/services to be provided in the unit and/or the Project. The specifications/amenities mentioned in the Agreement for sale and/or uploaded on RERA website shall be final and binding on the Developer and the Purchaser.

*This refers to drive time. Drive time refers to the approximate drive duration as provided above and the same is as per Google Maps recorded on 1st February, 2023 at 6 am.



Godrej
Five Gardens
Home Of The Heart





"I want a home like no other",
said the heart

*"I'll build you one with legacy
and trust",*
replied the home

The Godrej story began in 1897, with the manufacturing of locks. Since then, we have set several benchmarks. From a state-of-the-art manufacturing facility in a suburb of Mumbai, we've reached homes, offices, industries and the hearts of millions of people in India and around the world. With a proud tradition of many firsts, we find ourselves at work every day, building on the foundation of trust that was laid 125 years ago.



Actual photograph of Godrej One situated at Vikhroli East, Mumbai.

"What makes one a winner?",
questioned the heart

*"The ability to win hearts,
and awards",*
smiled the home



**The Most Trusted
Real Estate Brand**
Brand Trust Report, 2019



**Real Estate
Company of the Year**
8th Annual Construction
Week India Awards 2019



Builder of the Year
CNBC – Awaaz Real Estate
Awards 2019



Builder of the Year
CNBC – Awaaz Real Estate
Awards 2018



**Best Real Estate
Brand 2018**
The Economic Times



**Best Real Estate
Brand 2018**
Construction World Architect
and Builder (CWAB) Awards 2018



**The Golden Peacock
National Quality Award 2017**
Institute of Directors
27th World Congress on Business
Excellence and Innovation



Actual photograph of Godrej One situated at Vikhroli East, Mumbai



"I want to be closer to the world",
exclaimed the heart

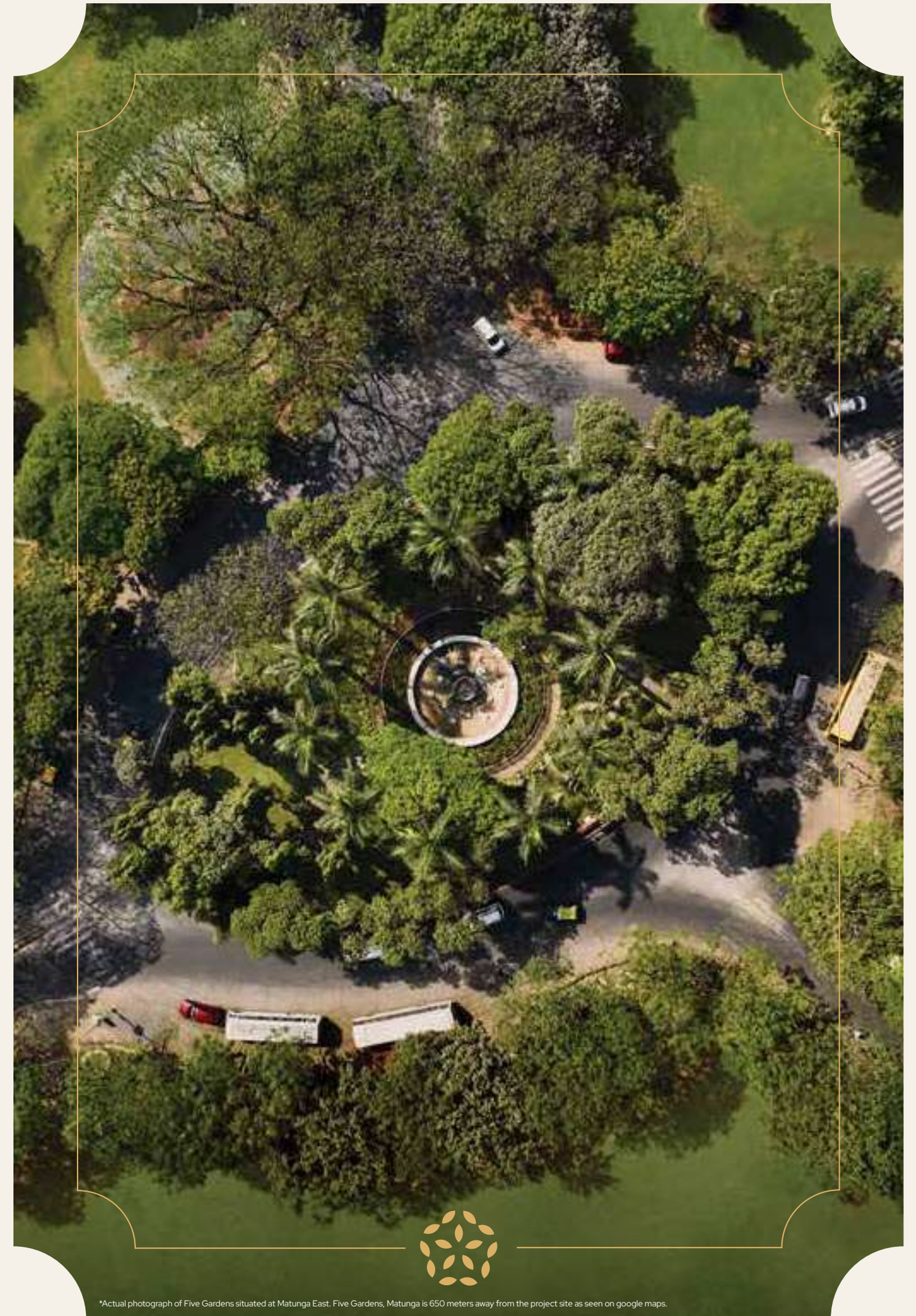
"So be it",
said the home

A bustling location in Mumbai, Matunga is a melting pot of culture, heritage and ease of connectivity. Surrounded by renowned schools, reputed hospitals, business centers and ample recreational hubs, Matunga is a spectacular blend of a residential and commercial set-up.

"Oh, how much I love gardens",
said the heart

"Here, take 5 of them"*,
replied the home

Five Gardens, situated at Matunga East, developed by the British in the 1890s, is one of the first planned layouts in Mumbai, that boasts of an exquisite lifestyle, and is within 400 mtrs. of walking distance.



*Actual photograph of Five Gardens situated at Matunga East. Five Gardens, Matunga is 650 meters away from the project site as seen on google maps.

*"Can you bring the world
closer to me?"*,
asked the heart

"I already have",
smiled the home.

A well-connected location, Matunga assures proximity to renowned schools, reputed hospitals and business centers alike.



*Drive time refers to the approximate drive duration as provided above and the same is as per Google Maps recorded on 1st February 2023 at 6 am.

"I wish life came with a map",
sighed the heart

"Say no more",
grinned the home

THE QUAIN WORLD OF FIVE GARDENS



Education

1. VJTI
2. Khalsa College
3. Don Bosco High School
4. Ramnivas Ruia College
5. RA Podar College

Recreational

6. Matunga Gymkhana
7. Dadar Parsi Gymkhana
8. Indian Gymkhana
9. Matunga Gujrati Club

Parks

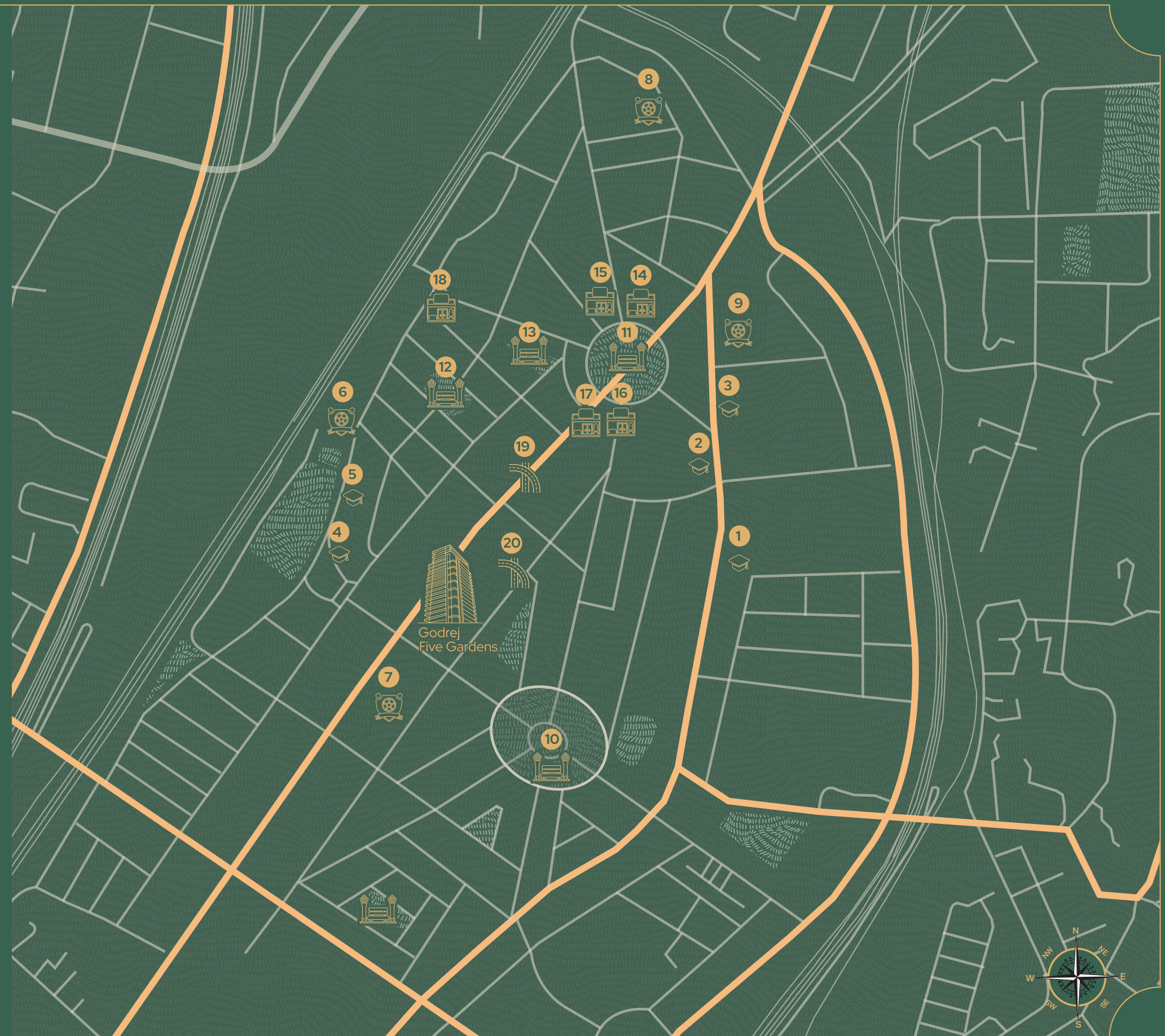
10. Five Gardens
11. Maheswari Udhyan
12. Nappu Garden
13. Kedarnath Udhyan

Iconic Restaurants

14. Café Mysore
15. Café Madras
16. Koolar and Co
17. Mani's Cafe
18. Ram Ashraya

Connectivity

19. Eastern Express Highway
20. Jame Jamshed Road



*"Where will my life bloom
with happiness?"*

asked the heart

*"In a home I call
Godrej Five Gardens",*

said the home

Welcome home to Godrej Five Gardens, the home of the heart that's throbbing with love and thriving with happiness. Where the warmth never ceases and the joy never ends. Where you'll find your favourite people, make your favourite moments at your favourite place – home. Because this is where the heart is and the heart is always in the right place.



Artist impression, not an actual site image. No warranty is expressly or impliedly given that the completed development will comply in any degree with such artist's impression as depicted.

"I wish I had a home with a view",
sighed the heart

"I'll make it happen",
said the home

Surrounded by the brilliance of greens, this place is blessed with stunning views that will thrill your heart, mesmerize your mind and calm your soul, all at once.

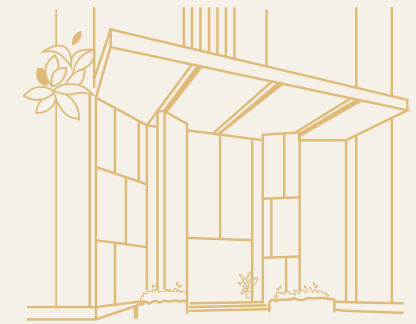
*"Give me one reason why
I'll love this home",*
challenged the heart

"I'll give you more than one",
smiled the home

Your home at Godrej Five Gardens comes with exceptional features:



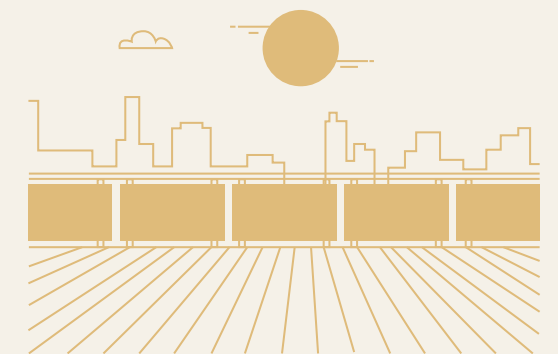
Three-sided open home for cross ventilation & natural light



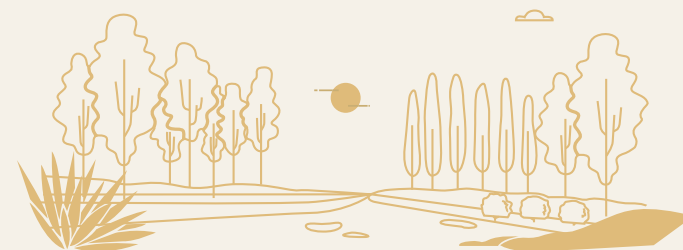
Grand entrance lobby



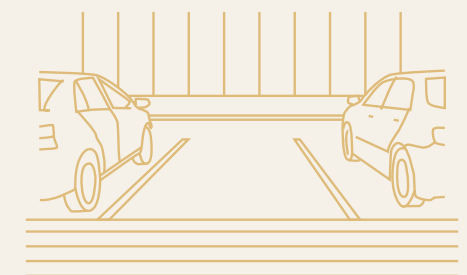
Spacious homes



Private deck with views



Open spaces & amenities spread across three levels



Three surface car park per home

*"How will you make me
feel special?",*
asked the heart

*"By giving you a slice
of paradise",*
smiled the home

If you're craving for me-time, you're sure to find it on your very own private deck that comes with stellar views of the city to keep you company, all day, every day.

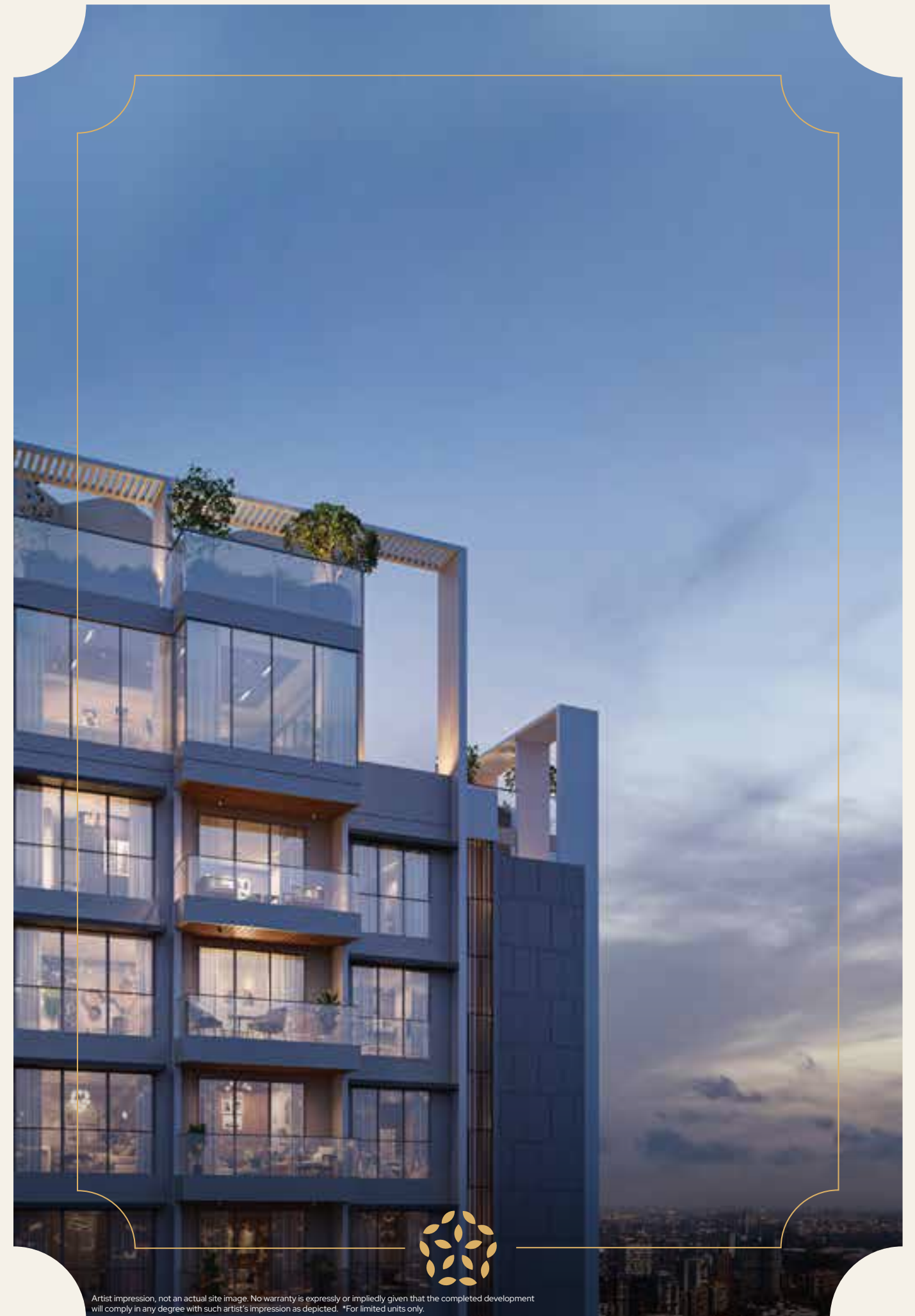


The furniture, accessories, paintings, plantations, landscaping, items, electronic goods, additional fittings/fixtures, decorative items, false ceiling including finishing materials, specifications, shades, sizes and colour of the tiles, etc. shown in the image are only indicative in nature and are only for the purpose of illustrating/indicating a conceived layout and do not form part of the standard specifications/amenities/services to be provided in the unit and/or the Project. The specifications/amenities mentioned in the Agreement for sale and/or uploaded on RERA website shall be final and binding on the Developer and Purchaser.

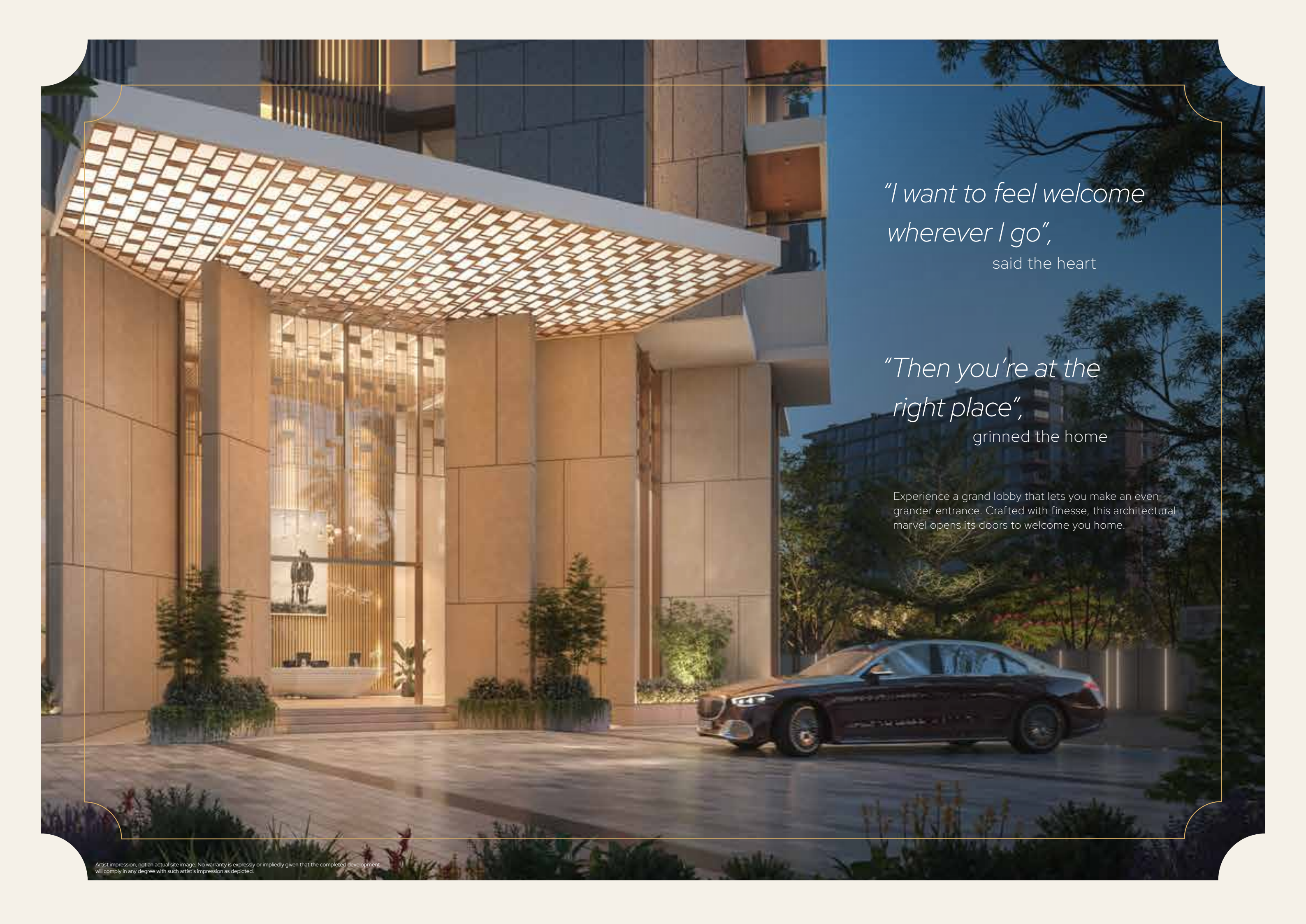
"What I'd really love is an airy home",
asked the heart

"Consider it done",
said the home

Revel in the easy, breezy feeling of a well-ventilated home that promises the freshest, most refreshing breeze from 3 sides, and an abundance of warm, happy sunlight.



Artist impression, not an actual site image. No warranty is expressly or impliedly given that the completed development will comply in any degree with such artist's impression as depicted. *For limited units only.

A photograph of a modern building's entrance at dusk. The building features a large, illuminated glass lobby with a grid-like pattern on the ceiling. A dark-colored car is parked in front of the entrance. The scene is lit with warm, golden light from the building's interior and exterior lighting, contrasting with the dark blue twilight sky. Trees and foliage are visible in the foreground and background.

*"I want to feel welcome
wherever I go",*
said the heart

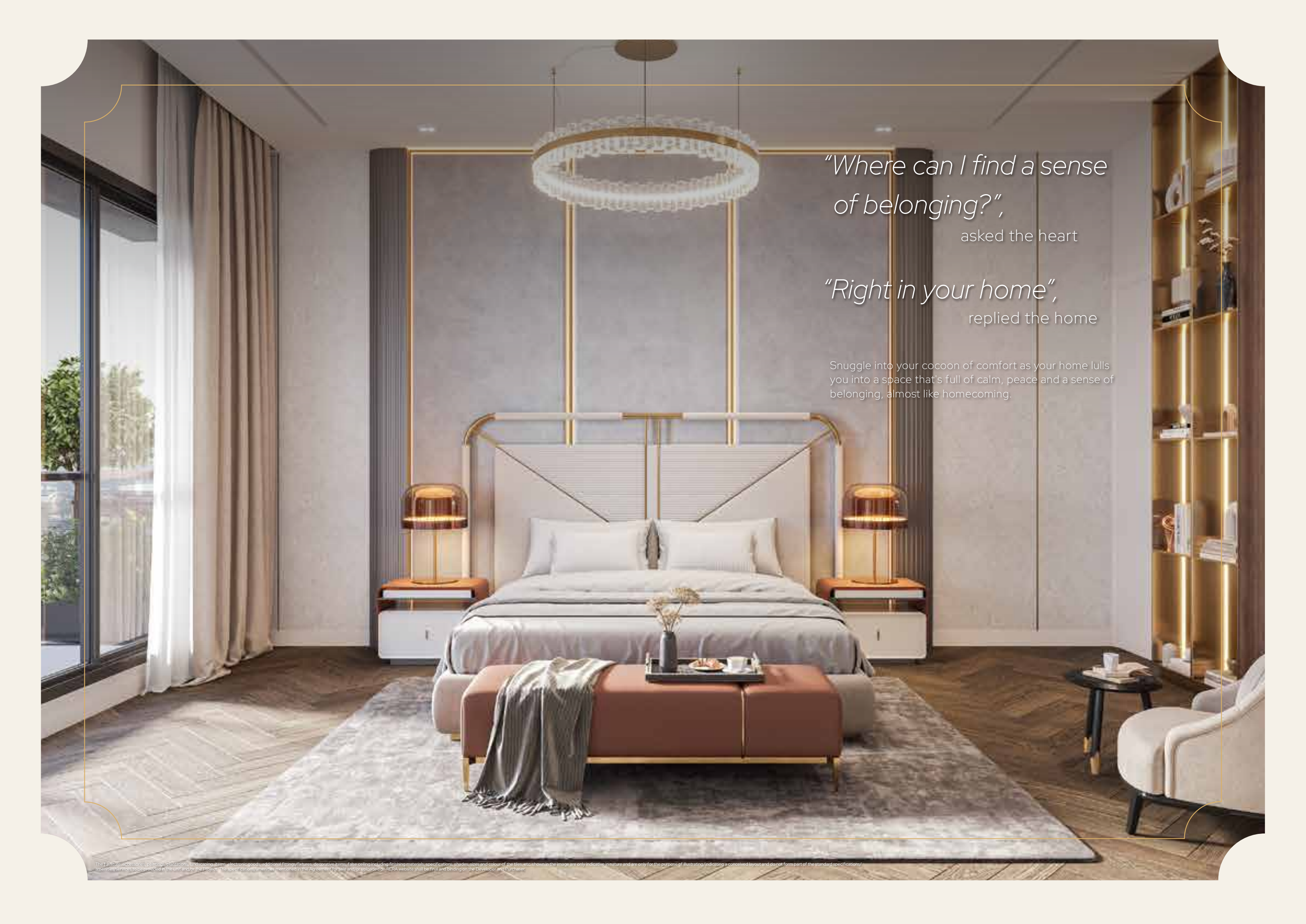
*"Then you're at the
right place",*
grinned the home

Experience a grand lobby that lets you make an even grander entrance. Crafted with finesse, this architectural marvel opens its doors to welcome you home.

"What does home feel like?",
asked the heart

"It feels as perfect as this place",
smiled the home

Sit back, relax and let your home treat you to an abundance of luxuries, joy and space, to hold more than enough memories to last you for a lifetime.

A modern bedroom interior featuring a large bed with a white headboard and bedding, flanked by two bedside tables with gold lamps. A large, circular chandelier hangs above the bed. To the right, there is a tall, illuminated bookshelf. The room has a large window with curtains on the left and a patterned rug on the floor.

*"Where can I find a sense
of belonging?",*
asked the heart

"Right in your home",
replied the home

Snuggle into your cocoon of comfort as your home lulls you into a space that's full of calm, peace and a sense of belonging, almost like homecoming.

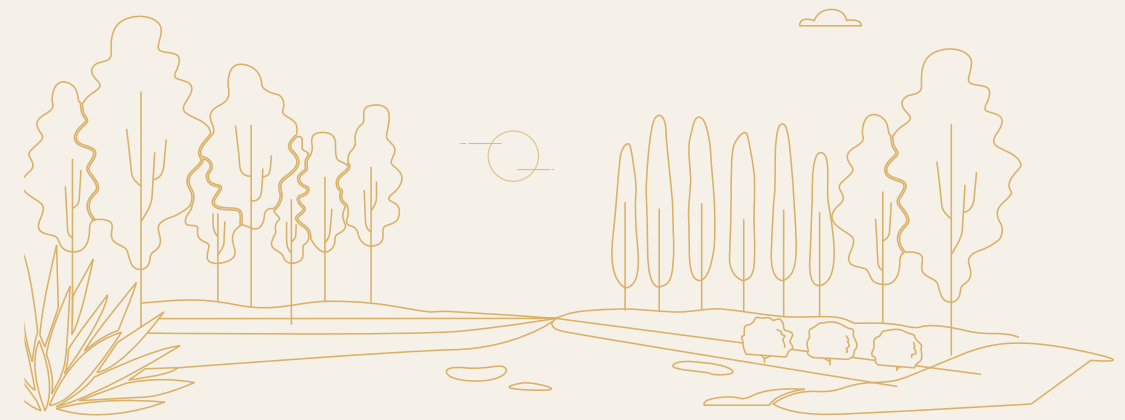
*“Can I have all the comforts
of life?”*

asked the heart

“Yes, and a lot more too”,

smiled the home

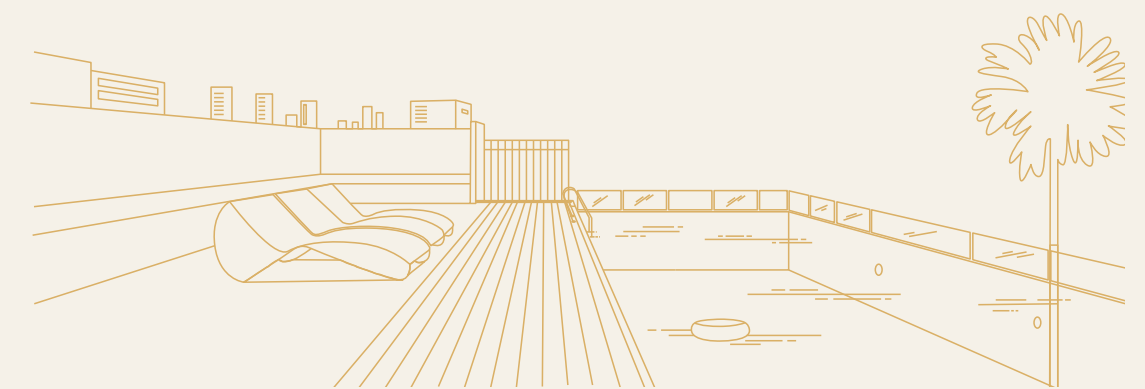
At this home, there are an array of amenities waiting to pamper you, indulge you and make every moment worthwhile. With amenities spread across three levels, you'll be spoiled for choice.



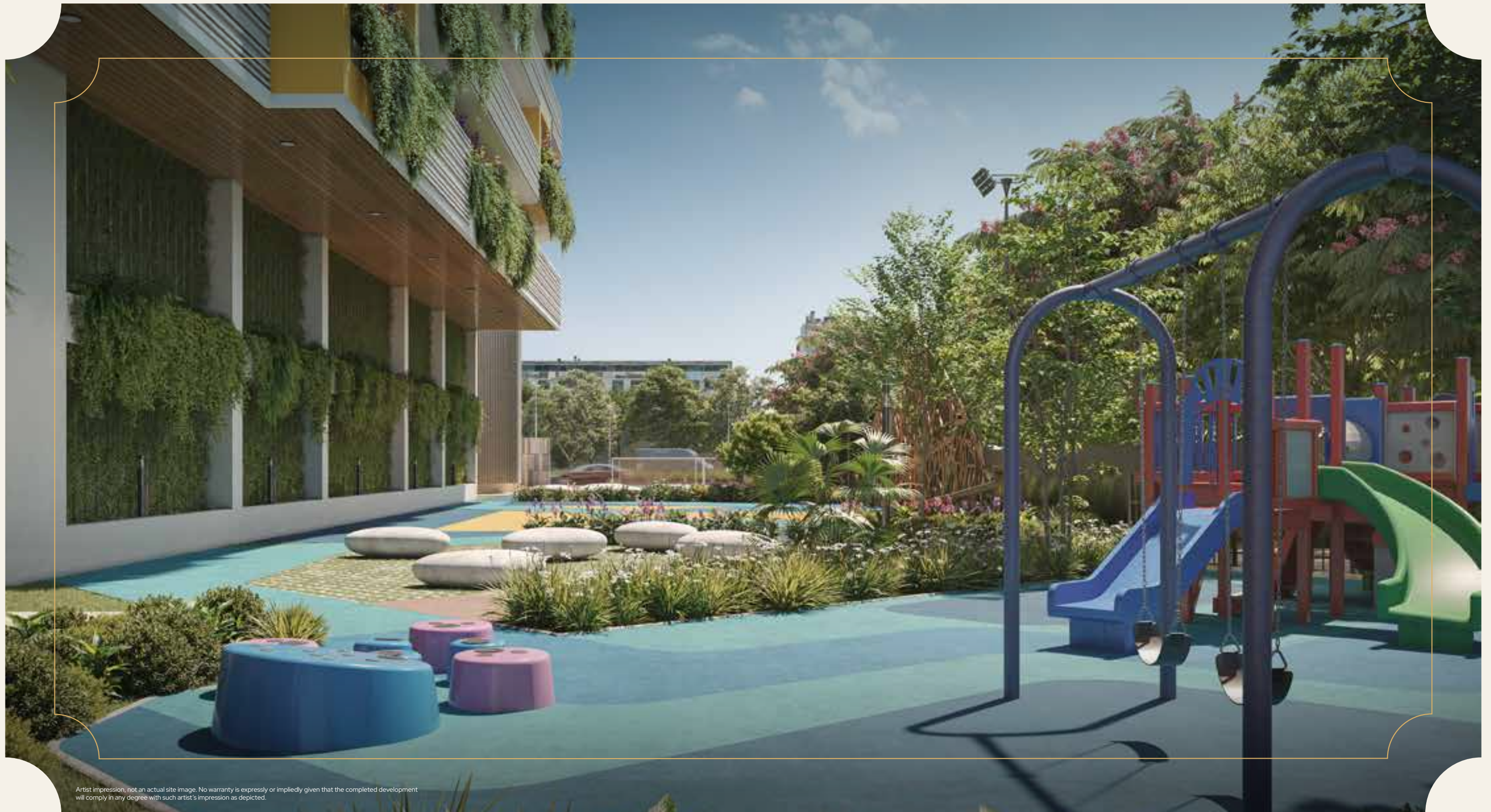
THE WORLD OF GREENS AT THE GROUND LEVEL



THE ACTIVITY WORLD AT THE PODIUM LEVEL



THE SKY WORLD AT THE ROOFTOP LEVEL



Artist impression, not an actual site image. No warranty is expressly or impliedly given that the completed development will comply in any degree with such artist's impression as depicted.



*THE WORLD OF GREENS
AT THE GROUND LEVEL*

*MULTIPURPOSE PLAY COURT
LANDSCAPE GREENS*

*JOGGING TRACK
PET PARK*



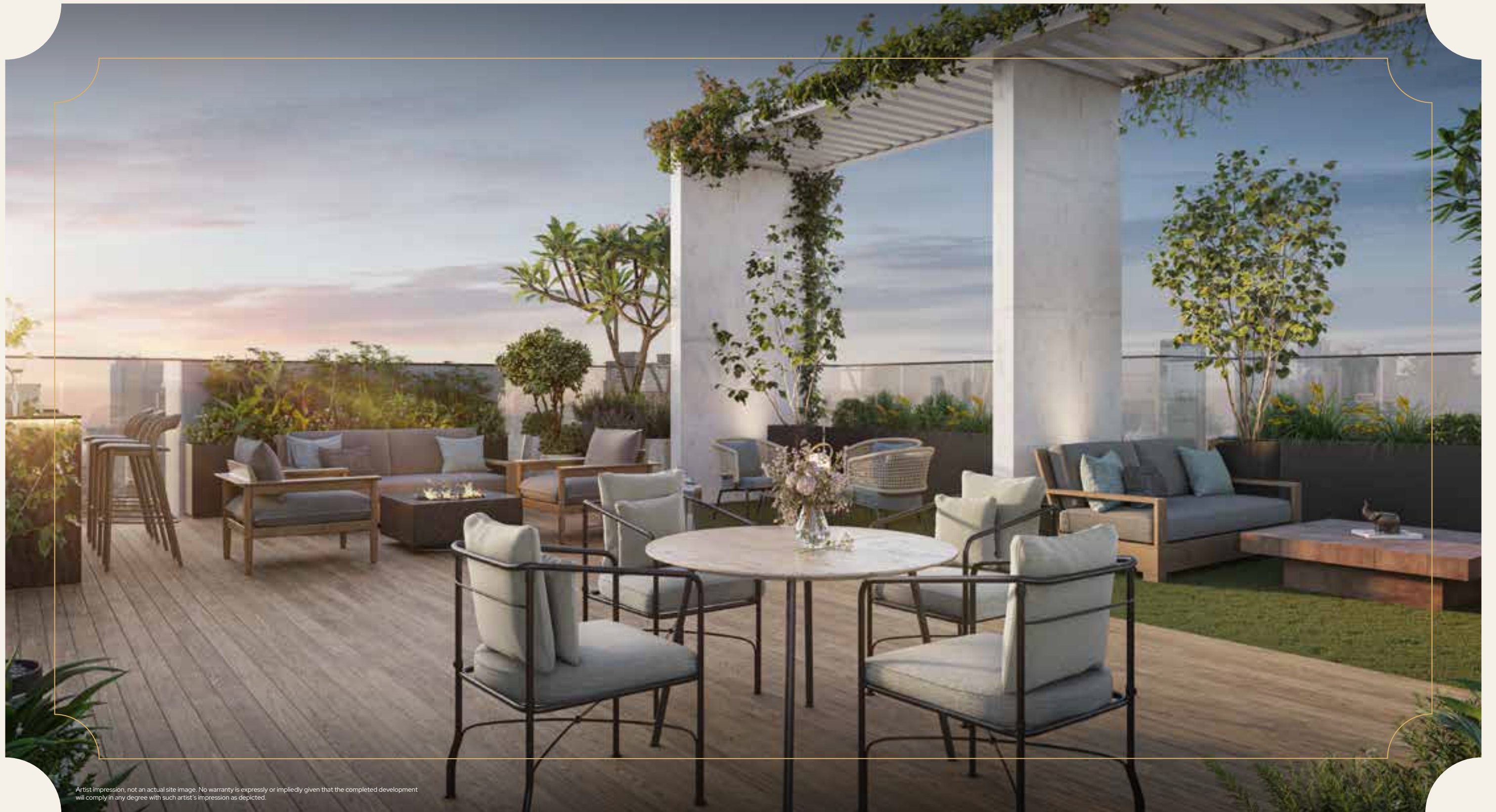
Artist impression, not an actual site image. No warranty is expressly or impliedly given that the completed development will comply in any degree with such artist's impression as depicted.



*THE ACTIVITY WORLD
AT THE PODIUM LEVEL*

*MULTIPURPOSE LAWN
SWIMMING POOL
SENIOR CITIZEN SEATING*

*WORK FROM THE GARDEN
CREATIVE CORNER*



Artist impression, not an actual site image. No warranty is expressly or impliedly given that the completed development will comply in any degree with such artist's impression as depicted.



*THE SKY WORLD
AT THE ROOFTOP LEVEL*

*INFINITY EDGE POOL
SKY LOUNGE*

*YOGA LAWN
STAR GAZING DECK*

*SKY GYM
INDOOR GAMES*



Artist impression, not an actual site image. No warranty is expressly or impliedly given that the completed development will comply in any degree with such artist's impression as depicted.

