

PROJECT



Eternia

LUXURY MILESTONE

Office :- First Floor, Serene, Building No 74, Opp Bus Depot, Kannamwar Nagar, Vikhroli (E), Mumbai - 400083.

Site :- Eternia, Building No 89, Kannamwar Nagar, Vikhroli (E), Mumbai - 400083

OUR TEAM

DESIGN ARCHITECT



JMC ARCHITECT

RCC CONSULTANT



Associated Structural
Consultants LLP

LAISONING ARCHITECT

Archo
Consultants

MEP CONSULTANT



Aqua Corp

Disclaimer: this advertisement/printed material does not constitute an offer or contract of any nature whatsoever between the promoters/developers and the recipient. All the transaction in this project shall be subject to and governed by the terms and conditions of the agreement for sale to be entered between the parties. Information in this brochure with respect to the project is indicative only. Artist's impressions, products, features, furniture, floor coverings, curtains, mirrors, wall hangings, light fittings, furnishings, pictures, images, plans, drawings, amenities, dimensions, elevations etc., if any are subject to the approval from the competent authorities and are shown as illustrations and for reference only. All journey times stated are approximate. Any reliance placed on such information is strictly at viewer's risk. The information, figures (if any) contained in this advertisement/printed material is for general guidance only. No photos have been shot at site. An independent investigation and analysis of the developer and the project may be undertaken by you before investing/ purchasing. The real estate agent acts only as a distributor for facilitating the sale of units in the project and not in any other capacity and is not making any representations or warranties, express or implied in respect of the project.



MahaRERA Registration Number :- P51800054205

<https://maharera.mahaonline.go.in>



Eternia

LUXURY MILESTONE



Eternia

LUXURY MILESTONE

The 22-storey tower located in the heart of Mumbai offers spectacular views of the City, Mangroves and Creek. The design concept envisioned by world renowned architects, consultants and engineers is curated with unparalleled luxurious lifestyle, redefining the skyline of Vikhroli.

ETERNIA by Kripa Elite offers 1 and 2 BHK Ultra Luxury Apartments along with High End Modern Retail Outlets with the finest embellishments and Modern Amenities. Situated in the prime location of Vikhroli, **ETERNIA** allows you to enjoy 360 living – which means everything that matters is just a short drive away. Office complexes, education institutions, cultural hubs and shopping malls – it's all just a hop away!

At **ETERNIA**, you will experience a truly global lifestyle. A project envisioned with airy and spacious rooms along with plenty of recreational amenities encompassing over 10,000 Sq. feet.

ETERNIA will be the landmark tower on everyone's mind. But, of course, only a chosen few will call it their abode. After all, you're the higher authority.

In a city where space is luxury, **ETERNIA** will be the ultimate **LUXURY MILESTONE**.



Kripa Elite Group

Kripa Elite Group has been in the real estate business for over four decades. We're currently in our third generation of entrepreneurs and have developed more than 1.5 million square feet of prime real estate. We have a multitude of experience in building residential properties, roads, government institutions and also in financing and investing. Every project of ours is based on our vision to create homes that enrich and change lives. We are committed to our principles of honesty and ethics. We're one of the most trusted construction groups in the business and have always delivered on time with great emphasis on quality and luxury. We believe in a future full of possibilities and work towards a goal to ensure luxurious and comfortable lives for all.

KRIPA ELITE'S MASTERPIECES AT A GLANCE



Amazing, Khar



Kripa Allure, Bandra



Celestia, Kharghar



The Crown, Tilak Nagar



Kripa Sagar, Ulwe



Majestic, Khar



Ekta Residency, Tilak Nagar



Bliss, Vikhroli



Ashwini Elite, Tilak Nagar



Sat Swarup, Tilak Nagar



Dhruv Heights, Kharghar



Fabulous, Mahim

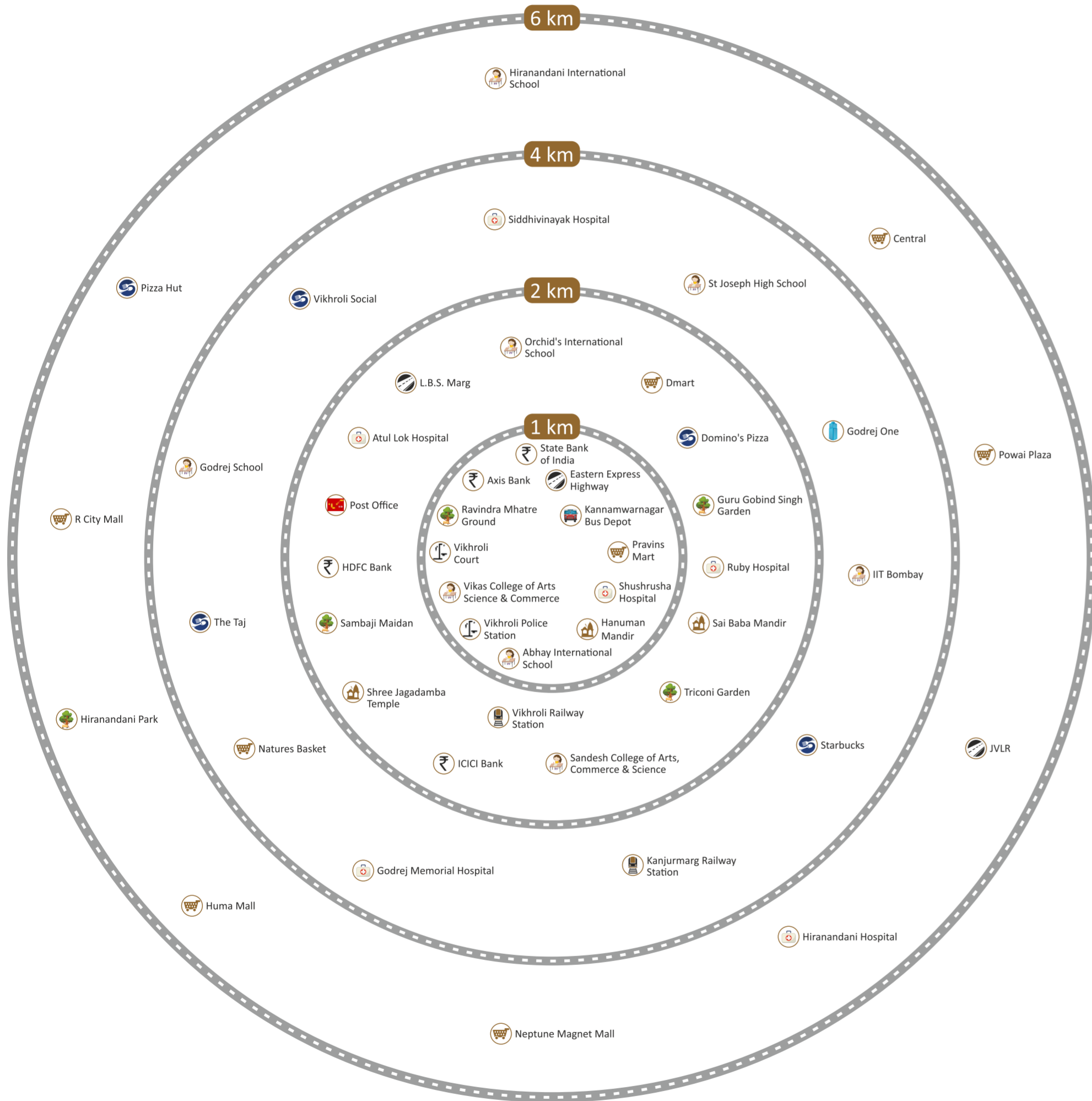


Serene, Vikhroli

Vikhroli Location Advantage

Vikhroli is one of the most peaceful and Blissful Suburb in Mumbai surrounded by city's largest mangrove ecosystem. Explore the convenience of everywhere, just a short drive away. Markets, Malls, Hospitals, Schools, Colleges, Multiplexes, Banks are within easy reach.

Vikhroli is on the brink of rapid appreciation owing to rapidly developing high rise towers, commercial offices and excellent connectivity by Central Railway, Upcoming - Metro, Eastern Expressway.

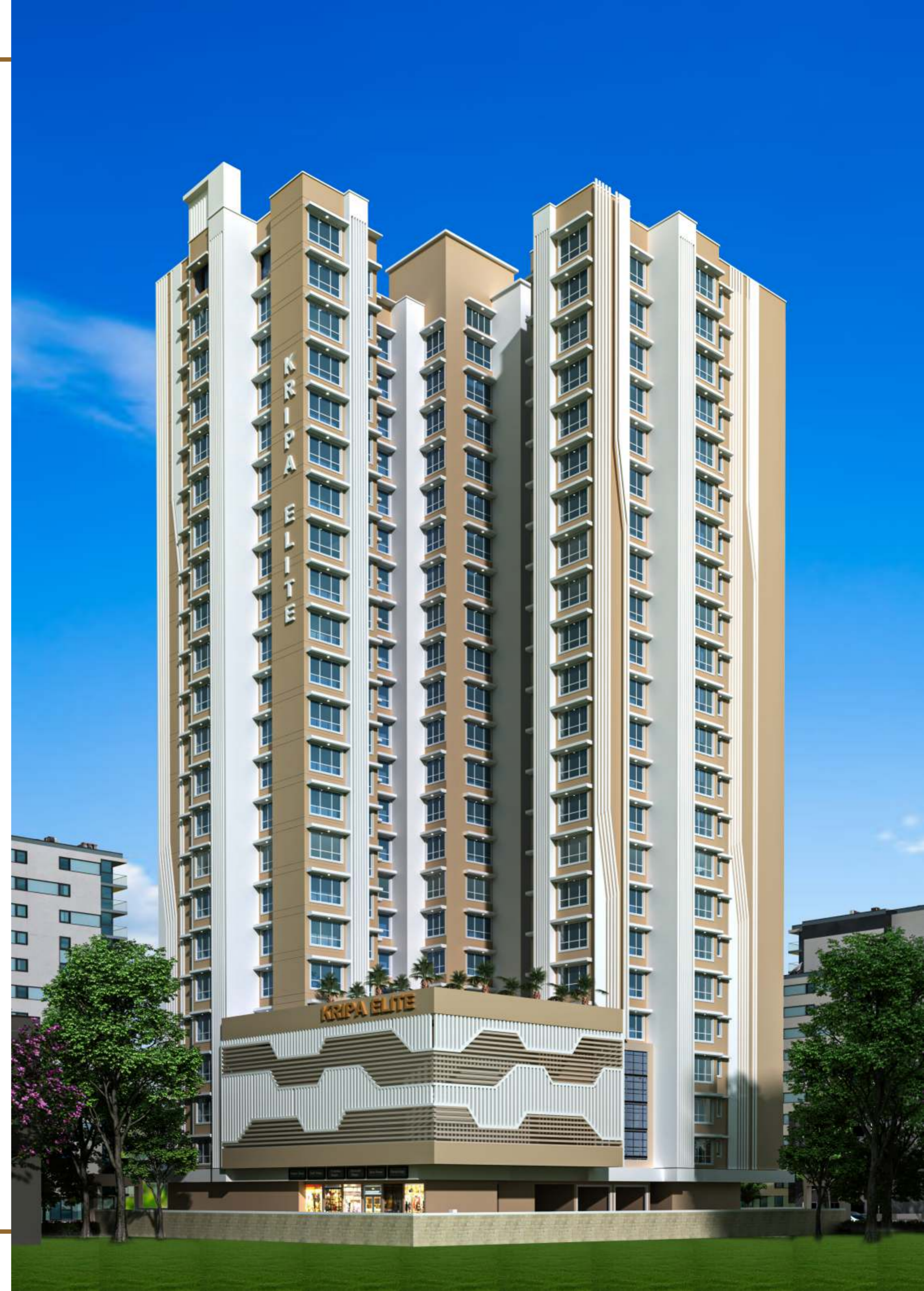


- Park
- Hospital
- Shopping
- Education
- Hotel
- Post
- Station
- Office
- Road
- Justice
- Bus Depo
- Worship

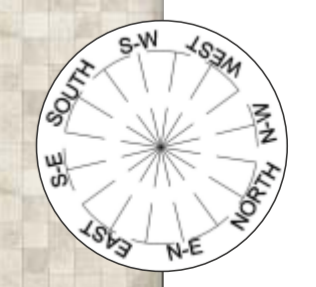


Project Highlights

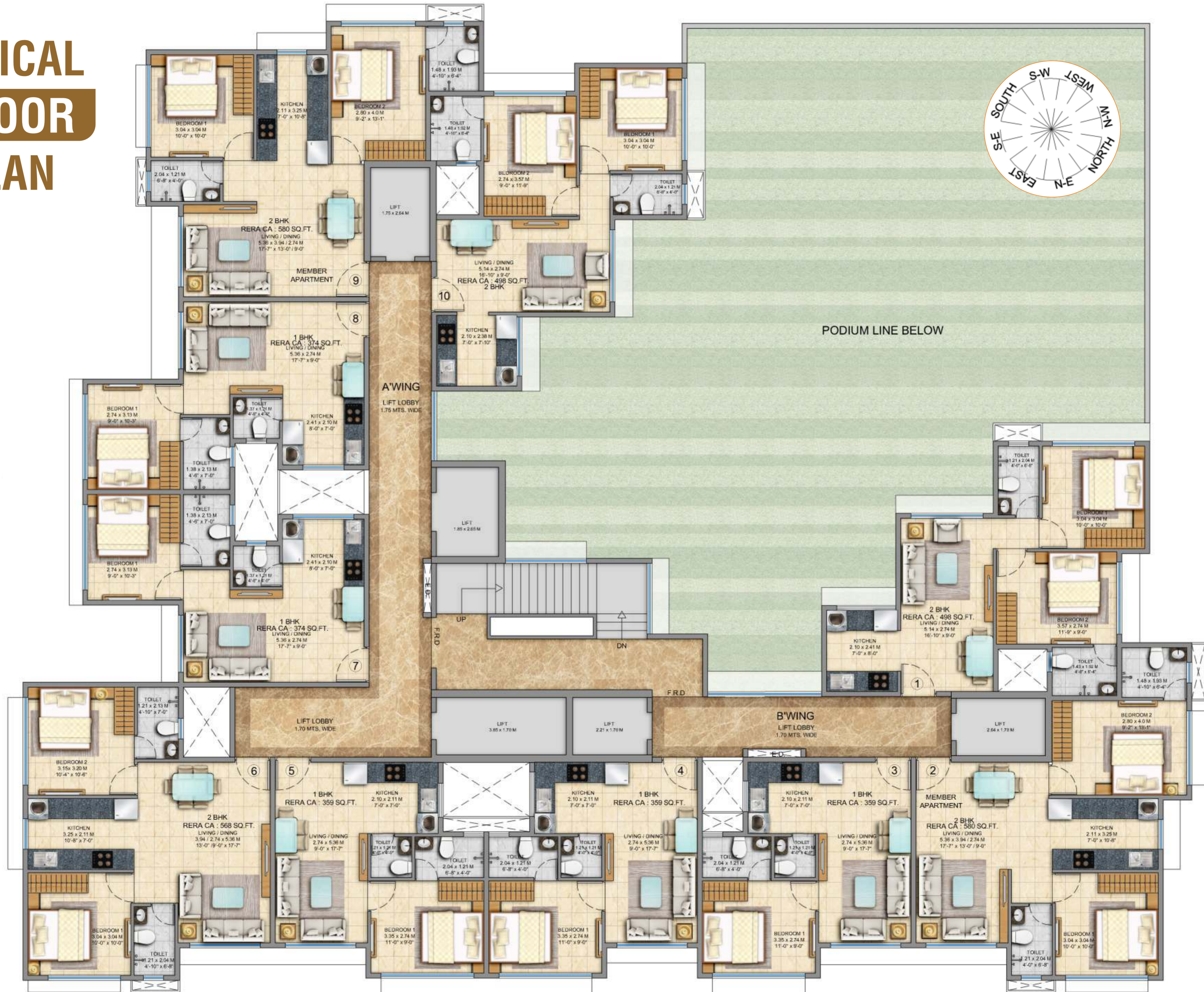
- G + 22 Storey Majestic Tower
- Offering 1 and 2 BHK Flats with Unparalleled Luxury and Modern Amenities
- Premium High End Retail Outlets
- Best in class quality construction with Exquisite Amenities
- Well Equipped Gymnasium
- Dedicated Multipurpose Hall / Indoor Games
- Podium Amenities
- Elevated Rooftop Amenities
- Grand Entrance Lobby
- Podium Level Car Parking
- All approvals in place with clear documents
- Loan available from leading financial institutions



TYPICAL GROUND FLOOR PLAN



TYPICAL FLOOR PLAN



TYPICAL 1ST & 2ND FLOOR PLAN



PODIUM LAYOUT



PODIUM AMENITIES



- | Children/Toddler play area
- | Serene Water fountain
- | Business Centre
- | Indoor Games
- | Pool Table, Table Tennis, Foosball, Chess and Carrom
- | Well Equipped Gymnasium
- | Yoga Meditation Zone
- | Podium Landscape Garden
- | Senior Seat Out Area
- | Gazebo with wooden deck seating area
- | Vehicle free zone

ROOFTOP AMENITIES

Your living experience to new heights

- | Open Air Gymnasium
- | Jogging Track
- | Box Cricket Zone
- | Badminton Court
- | Multipurpose Court
- | Giant 3D Chess
- | Rooftop Party Lawn
- | Reflexology Path
- | Gazebo
- | Wooden Deck Sitting
- | Parametric Viewing Lounge
- | Landscape Greenery





GRAND ENTRANCE LOBBY

1 BHK ISOMETRIC VIEW



Areas	Size
Living Room and Dining	17'-7" X 9'-0"
Kitchen	7'-0" X 7'-0"
Master Bedroom	11'-0" X 9'-0"
Common Toilet	4'-0" X 4'-0"
Attached Toilet	6'-8" X 4'-0"
RERA Carpet Area	359 SQ. FT.

1 BHK ISOMETRIC VIEW



Areas	Size
Living Room and Dining	17'-7" X 9'-0"
Kitchen	8'-0" X 7'-0"
Master Bedroom	10'-3" X 9'-0"
Common Toilet	4'-6" X 4'-0"
Attached Toilet	4'-6" X 7'-0"
RERA Carpet Area	375 SQ. FT.



1 BHK LIVING ROOM



1 BHK BED ROOM



1 BHK KITCHEN

2 BHK ISOMETRIC VIEW



Areas	Size
Living Room and Dining	16'-10" X 9'-0"
Kitchen	7'-0" X 7'-10"
Master Bedroom	11'-9" X 9'-0"
Kid's Room	10'-0" X 10'-0"
Common Toilet	6'-8" X 4'-0"
Attached Toilet	4'-10" X 6'-4"
RERA Carpet Area	498 SQ. FT.



Areas	Size
Living Room and Dining	17'-7" X 9'-0"/13'-0"
Kitchen	10'-8" X 7'-0"
Master Bedroom	10'-4" X 10'-6"
Kid's Room	10'-0" X 10'-0"
Common Toilet	4'-10" X 6'-8"
Attached Toilet	4'-10" X 7'-0"
RERA Carpet Area	568 SQ. FT.

**2 BHK
ISOMETRIC
VIEW**

Areas	Size
Living Room and Dining	17'-7" X 9'-0"/13'-0"
Kitchen	10'-8" X 7'-0"
Master Bedroom	9'-2" X 13'-1"
Kid's Room	10'-0" X 10'-0"
Common Toilet	4'-10" X 6'-8"
Attached Toilet	4'-10" X 6'-4"
RERA Carpet Area	580 SQ. FT.



**2 BHK
ISOMETRIC
VIEW**



2 BHK LIVING ROOM



2 BHK MASTER BED ROOM



2 BHK KIDS ROOM



2 BHK KITCHEN

A WORLD OF COMFORTS DESIGNED AROUND YOU



INTERNAL AMENITIES

- | Designer Flooring Tiles of Reputed Brand
- | Granite Kitchen Platform with Stainless Steel Sink
- | Hot water Geysers in all bathrooms
- | Gypsum Ceiling in all rooms
- | Ceiling Fans and LED Lights in all rooms
- | Exhaust Fans in Kitchen and Bathrooms
- | Anodized Aluminum sliding windows
- | Branded Bath Fittings & Sanitary Fittings
- | Antiskid Flooring in Bathrooms
- | Laminated flush doors in all rooms
- | Branded Electrical Switches
- | Gypsum Finished walls with paint
- | Video Door Phone

EXTERNAL AMENITIES

- | Grand Entrance Lobby
- | Podium Amenities
- | Rooftop Amenities
- | High Speed Elevators with ARD of Reputed Brand
- | Fire Fighting & Fire Alarm System
- | Rain Water Harvesting System
- | 24/7 CCTV Camera Surveillance of common areas
- | Double Stack Car Parking System
- | Texture Paint for External Walls
- | 6" External wall & 4" internal wall
- | Brick Bat Waterproofing



* All images used are for illustration purposes only

