

CREATE PRECIOUS MEMORIES.

Artist's Impression



Artist's Impression

One of the rarest things in the world are *Pearls.*



One needs to dream big, work hard and wait for the good luck to own one, and probably that's why there is a famous say "Pearls don't lie on the seashore. If you want one, you have to dive for it".

Yes, now It's time own the Pearl in your life which you always wanted to have.

Horizon group presents Horizon Pearl the luxurious residential tower having premium 1 & 2 BHK homes with modern amenities. 42 storey horizon Pearl is full of comforts, convenience and connectivity. The project itself surrounded by serenity of Yeoor hills and located just off Ghodbunder Road, it's behind Tieten Medicity hospital (earlier Vedant) at kasarvadavali. Every important place is just walking distance from here like upcoming metro station, Jain temple, school & colleges, markets to multiplex & shopping malls.



Destination

What makes Horizon Pearl the best place to live is its strategic location on Ghodbunder Road, it boasts seamless connectivity to major landmarks of western side towards Dahisar and eastern corridor towards Thane and Mulund through proposed metro rail, railways and roadways. From schools to colleges, corporate offices, hospitals to markets, every place is a stone's throw distance from this precious property.

It is safe to say, when you call the best part of Thane your home, you welcome every place to your neighbourhood.

Pearl

of hills, horizon Pearl comes with world class clubhouse equipped with modern amenities for each of the family members starts with kids to senior citizens and specially for you to unwind and enjoy the leisure, peaceful evening time. It provides Kids play area, Walking track, Gymnasium, Yoga deck, Indoor games,

Mini business Centre. Now you can surely claim this place as the most precious thing of your life.



INTERNAL AMENITIES

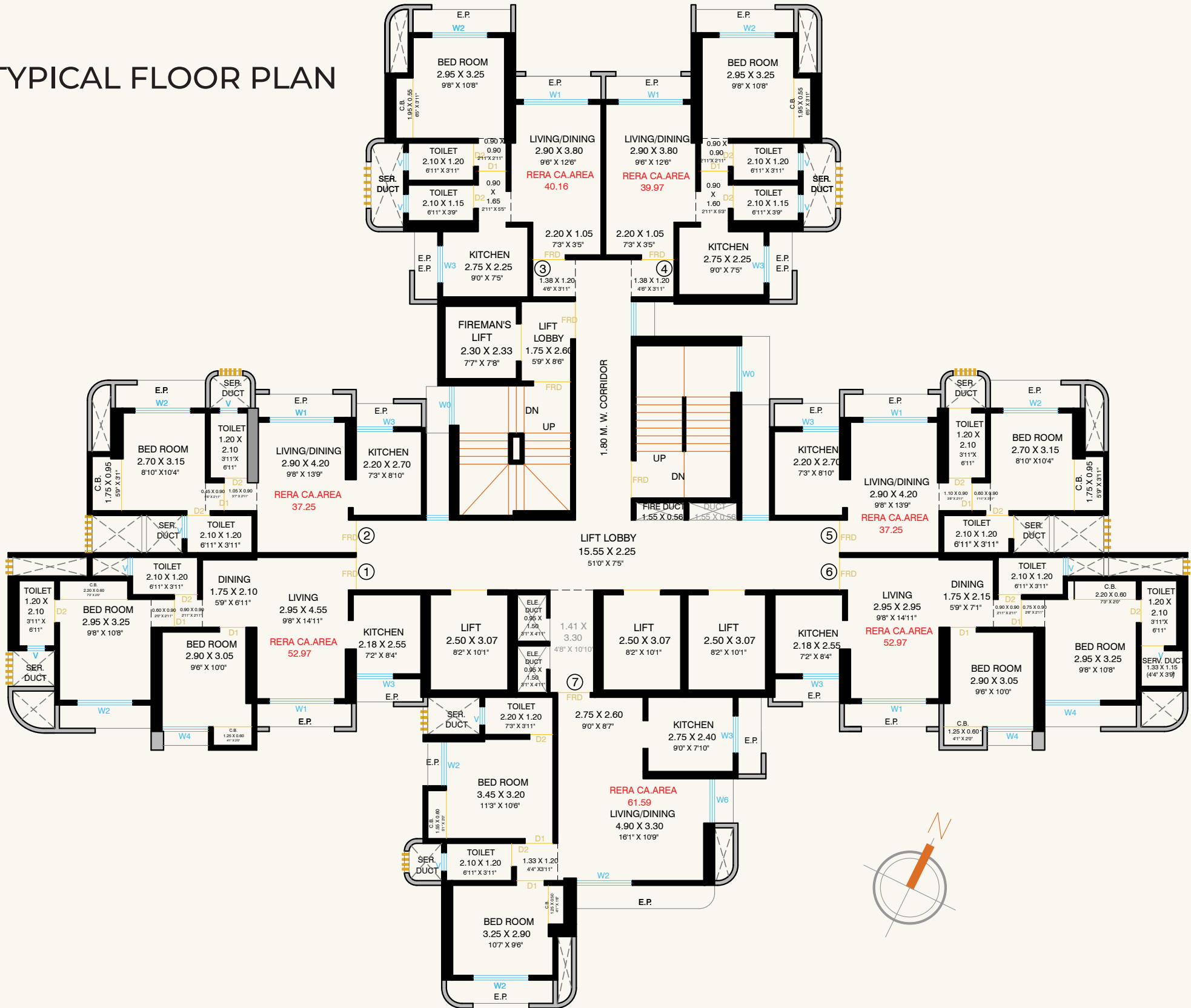
- Solar System For Hot Water
- 800mmx800mm Vitrified Flooring
- Anodized Coated Sliding Windows
- Bathroom Doors & Dry Balcony Doors
- Reputed brand CP Fittings For Toilets
- Black Granite Platform with S.S. Sink & Service Platform
- Marble Frame To All Windows
- Water Proof Doors For Toilets
- Gypsum Finish For Internal Walls
- Concealed Electric Wiring & Plumbing
- Laminated Flush Doors For Bed Room & Main Entrance
- Video Door Phone
- AC in Bed Rooms



EXTERNAL AMENITIES

- Generator Backup For Lift & Common Areas
- CCTV Camera For Lift & Common Areas
- Intercom Facility
- Quality Elevator
- Top Class Elevation
- Organic Waste Recycle System
- STP Plant
- Fire fighting System
- Gymnasium
- Kids Play Area
- Indoor Games

TYPICAL FLOOR PLAN





ABOUT US

Since 1995 Horizon Group has been a trusted name in the real estate industry, we have designed and developed quality homes which has fulfilled dreams and added value to our customers. The group has built more than 15 lakh Sq. ft. of area and 5.5 lakh Sq. ft is already under construction in cities like Thane and Pune. With the highest record of timely possession, we at Horizon group endeavour to craft homes that offers an upgrade to our customers and comforts to their family.

From premium to affordable homes we maintain the same parameters while planning, designing and developing.

We know what it takes to own a home and that is why we put a lot of hard-work, persistence and dedication into each of our projects to give you the best. Our best source for new business comes via referrals from our existing customers as well as people who have worked with us in the past.

15
lakh sq.ft.

LAND DEVELOPED

14
projects

COMPLETED

2189
units

DELIVERED

COMPLETED PROJECTS :

- Horizon Palms II
- Horizon Flora
- Om Rajlaxmi CHS ltd
- Horizon Classique II
- Horizon Classique I
- Horizon Palms I
- Horizon Prime
- Horizon Heights
- Pushpanjali
- Pushpanjali residency Phase 2
- Pushpanjali residency Phase 1
- Pushpanjali residency
- Anand vihar
- Pramila Heights

ONGOING PROJECTS :

- Horizon Palms III
- Horizon Exotica
- Horizon Flora- Camelia
- Pushpanjali Phase 3

For more information call : +91 97691 97774 / 022 4970 8252 | Email : enquiry@horizongroup.in | Website : www.horizongroup.in
Corporate office address : Office No. 1 to 5, 2nd Floor, Horizon Heights, Opp. Mahalaxmi Tower, Kasarvadavali G. B. Road, Thane West - 400615
Sales office address : Behind Tieten Medicity Hospital (earlier Vedant) Kasarvadavali, G. B. Road, Thane 400601.

PROJECT BY: M/S K M DEVELOPERS & M/S MANGALMURTI BUILD CORP.

This project has been registered via MahaRERA registration number : P51700050797 and is available on website <https://mahareara.mahaonline.gov.in> under registered projects.

DISCLAIMER:The information provided in this advertisement, including all pictures, images, plans, drawings, amenities, dimensions, elevations, illustrations, facilities, features, specifications, other information, etc. mentioned are indicative of the kind of development that is proposed and are subject to the approval from the competent authorities for the under construction projects. Furniture, Fixtures, Accessories and Furnishings shown in the show flat are only for representation and shall not be provided in the actual flat. Photographs of interiors, surrounding views and location may have been digitally enhanced or altered and do not represent actual views or surrounding views. The present content on the website(s), specifications and amenities including but not limited to visuals, pictures, images/ renderings/maps are purely indicative and informative in nature and only an architect's impression and only indicative of the envisaged development and not actual depiction of buildings/landscapes etc. The Project is to be completed in a phase wise manner consisting of three phases. The possession of the flat/apartment of the building in a particular phase will be handed over as on completion of that particular phase. However, the common areas and amenities that have been shown in any advertisement, audio visuals and/or any type of communication in any form whatsoever is/are for the entire Project and not specific for any particular building or phase of the Project and that the common areas and amenities will only be available on completion of the phase of the Project, in as much as the common areas and amenities are also being developed in a phase wise manner over a period of time.

Any decision regarding booking of the apartment/s in the project by you, until the project is registered under RERA, relying upon the contents of this website shall be solely at your costs and consequences. Company and or its proprietor, employees, are not liable for any consequence of any action taken by the viewer relying on such material/information on this web. This website is solely for informational purposes and is not intended to constitute an offer or solicitation and are confidential and privileged.