

ALL REVOLUTIONS CHANGE LIVES. HERE'S A REVOLUTION
THAT WILL CHANGE HOW YOU LIVE.



Nirmal Lifestyle

INNOVATING...CREATING...TRANSFORMING



Nirmal Lifestyle

ABOUT US

- 30 years of expertise in real estate
- Constructed more than 5 million sq. ft
- Developed Mulund as a preferred destination
- Nirmal Lifestyle is one of the finest malls in India
- Coming soon Sofitel & So, One of India's finest Hotels & Convention Centres
- 20 Lifestyle Cities by 2020
- Quality & Innovation – Soul of our Projects



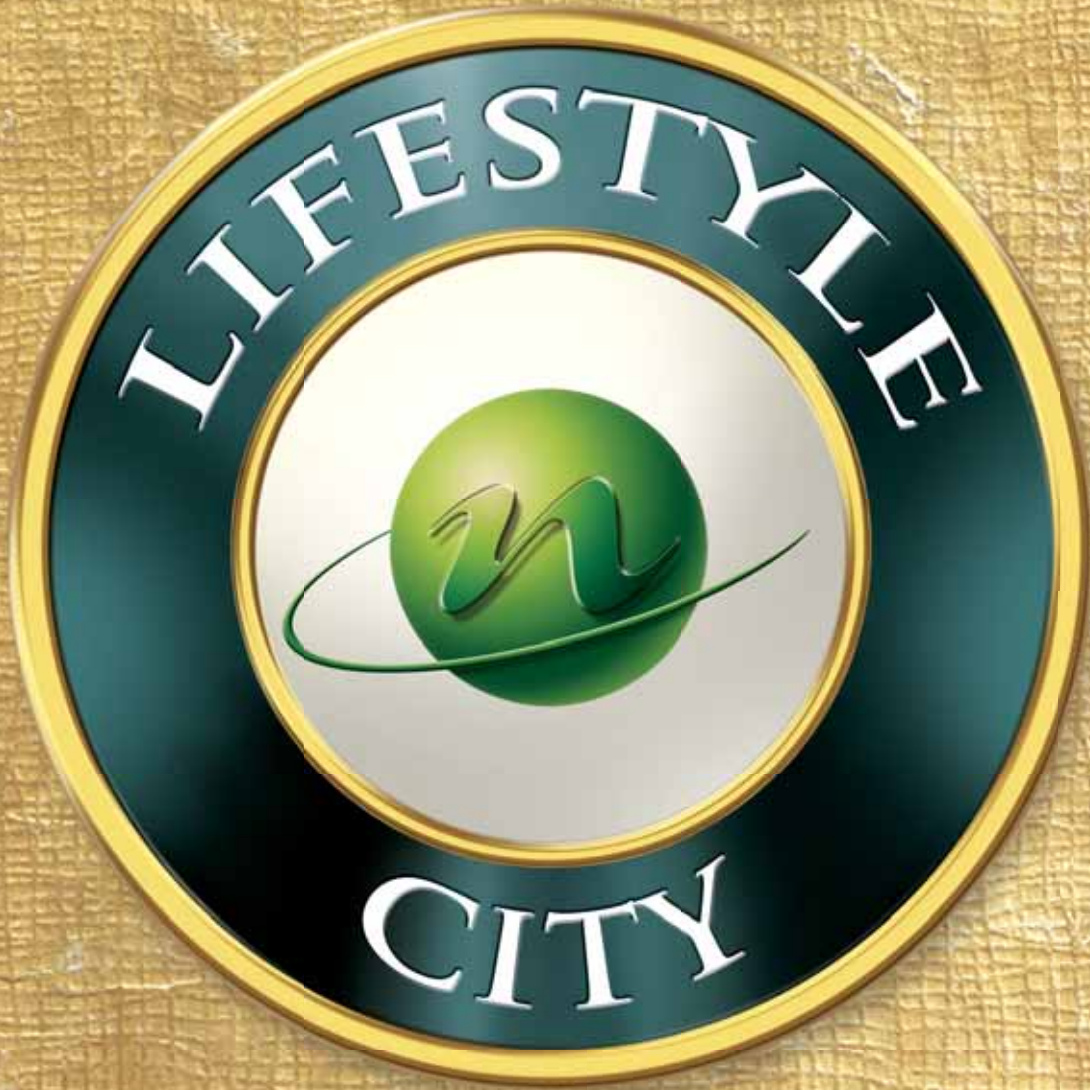


MULUND – A SUCCESS STORY

- ★ City of Joy, Nirmal Galaxy, Kalpnagri, Nirmal Nagar are few of the most residential artistic structures in Mulund.
- ★ Each housing complex is designed amidst beautiful landscapes with modern architectures.

- ★ Nirmal Lifestyle Mall, one of the Largest Glass Dome Mall in South East Asia.
- ★ It was voted as 'Mumbai's Favorite Mall' twice by a survey done by popular news dailies.
- ★ Awarded the 'Best commercial property, 2008' by Crisil CNBC-Awaaz.

- ★ One of the largest hotels and convention center.
- ★ One of the finest architectural structures in India.
- ★ 7 lakh sq.ft mall extending sphere of the existing Nirmal Lifestyle Mall





Nirmal Lifestyle

LIFESTYLE CITY: A REVOLUTIONARY CONCEPT IN LIVING.

Our latest venture into townships is inspired out of relentless search and discovery of excellence in regional development. It is this expertise that we wish to replicate across 20 destinations in the country, after small contribution in uplift and development of Mulund into a preferred suburb in Mumbai today. Each lifestyle city will bring world-class infrastructure and facilities within reach. Lifestyle city will vary from 100 to 1000 acres that would house most prudent facilities with superior infrastructure in the country. The city would create consortium of conveniences that aspire to harness multi-specialty talent for every individual living in it. These initiatives aim at breeding adequate and superior sports infrastructure and facilities which would be adopted as part of living and lifestyle. Lifestyle City will inspire & expose universal living & global lifestyles through its assortment of innovative initiatives to redefine living.



IN
KALYAN







Nirmal Lifestyle

REVOLUTIONARY FEATURES

- ❖ More than 150 acres of development
- ❖ One of the largest green spaces
- ❖ 100% power back-up
- ❖ S.E.H - Space Efficient Homes
- ❖ One of the first water front developments in western India
- ❖ Olympic standard sports facilities

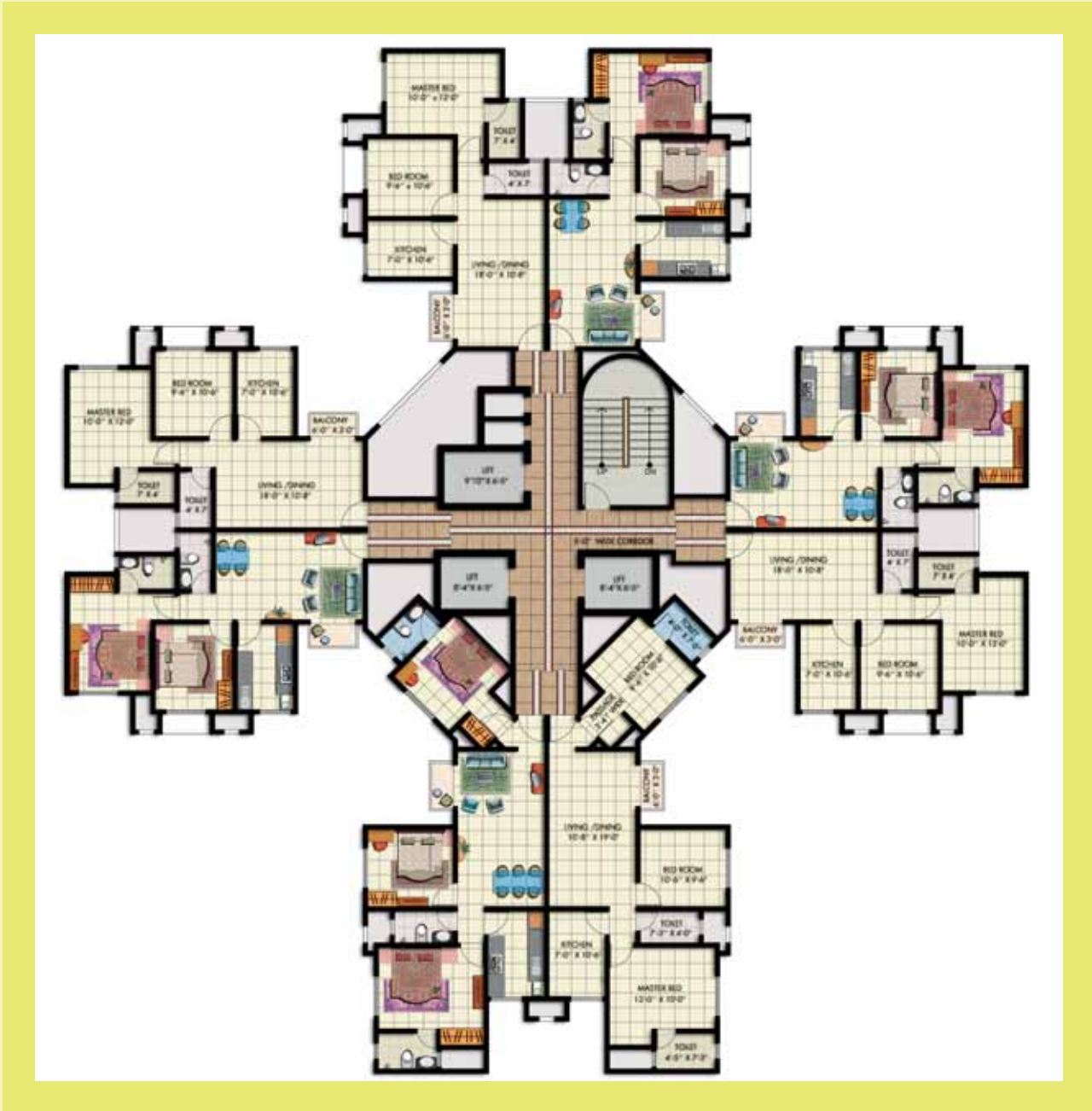


BUILDING LAYOUT



TYPE 1 - 1BHK & 1.5BHK

*Conditions Apply



TYPE 2 - 2BHK & 3BHK

*Conditions Apply



ZONE I - LAYOUT





A WORLD CLASS HOME

GENERAL AMENITIES

- 100% Power back-up – 24 hours electricity
- S.E.H. (Space Efficient Homes)
- One of the first water front development plan in western India
- Cutting edge infrastructure & technology for the city
- World class school & pre-school
- Wellness centre, yoga meditation, dance & music
- Eco-friendly township
- Lifestyle city buses to important destinations
- Six Packs - The Exclusive Club House with jacuzzi, steam, sauna & indoor games
- Swimming pool & kid's pool
- Every flat is with a sundeck

INTERNAL AMENITIES

Flooring :

Vitrified flooring.

Kitchen :

Granite platform / service platform.
Stainless steel sink.
Utility area for washing machine.
2 Feet tiles in kitchen above platform.

Toilet :

Door height premium tiles – dual colour.
Jaquar quality fittings.
Branded wash basin & mirror.

Wall Finish :

POP finish walls with acrylic paint.

Doors & Windows :

Main door laminated & flush doors with paint finish.
Powder coated aluminium sliding windows.

Electrification :

Concealed ISI Quality wiring with circuit breakers.
Telephone & cable TV Points in living room & bedroom.
Branded modular switches.

Plumbing :

Concealed piping system in kitchen & toilet.

Security :

Intercom facility from ground floor lobby to each flat & inter-communication facilities.
24 hours security guards.



Nirmal Lifestyle

Head Office Address:

L.B.S. Marg, 3rd Floor, Multiplex Building, Mulund (W), Mumbai - 400080

Tel: 022 - 25937000 / 7100; Fax: 022 - 25937200

• Email: sales@nirmallifestyle.com • Visit us at www.nirmallifestyle.com

Site Address:

Lifestyle City, Next to Ajanta Paper Mill, Village Vadavli,
Near Shahad, Kalyan West.

Website: www.lifestylecity.co.in