

Specimen Brochure - Under development.



THE PROVINCE
AWAITS YOU

**2 ,2.5 & 3 BHK CONDOS
AT PUNAWALE**



Pictorial representation is used to simply convey the essence of the suggested lifestyle.

IT'S YOUR TIME TO REIGN

~

It's a royal act of individualism, really, to live life on your own terms. Sovereign living often entails listening to what people have to say but ultimately having the spirit to act as you please. This is where The Province comes in, as the perfect abode. It's a princely stretch of land, where you reign supreme - free-spirited and limitless. Where your loved ones possess the autonomy that the mundane existence often takes away. Where all your dreams come true. Come, experience glory at The Province - your empire awaits.

YOUR EMPIRE AWAITS

~

The Province brings to life dormant dreams of royal living. Explore idyllic 2, 2.5 & 3 BHK Condos at Punawale, a fast-developing locale with flawless connectivity, robust infrastructure and an ambience of bliss.





Disclaimer: The perspective images may not be to the scale or may not represent actual facade / elevation. The details of windows, paints, elevation features, landscaping, ground development, trees etc. in the perspectives is an artists impression and would be different to actual construction of building and development. The viewers affirm that he / she has not taken his/ her decision of purchase/booking by viewing these perspective. The company is not responsible for the action of the viewer's booking / purchasing a unit relying on these perspective.



Pictorial representation is used to simply convey the essence of the suggested lifestyle.

AMENITIES

The Province brings to life dormant dreams of royal living. Explore idyllic 2, 2.5 & 3 BHK Condos at Punawale, a fast-developing locale with flawless connectivity, robust infrastructure and an ambience of bliss.



DESIGNER ENTRANCE LOBBY



OPEN GYM AREA



TODDLER PLAY AREA



CHILDREN PLAY AREA



SENIOR CITIZEN SIT OUTS



MEDITATION / YOGA AREA

FEATURES FOR APARTMENTS

- *MS safety grills with 4ft height with oil paint to all windows except washroom*
- *Ample light points with branded modular switches*
- *Provision for inverter charging point*
- *Provision of electrical point for washing machine in utility area*
- *Provision of electrical point for water purifiers, Microwave, refrigerator.*
- *T.V and telephone points in master bedroom and living.*
- *AC points in master bedroom and children bedroom*
- *All doors will be properly laminated with wooden/Granite/Marble door frame*
- *Marble./Granite frame for all windows*
- *600 X 600 branded double charged vitrified tiles in entire apartment.*
- *Designer ceramic tiles in terrace and utility area*
- *Designer dado tiles in bathrooms up to lintel levels and above kitchen otta upto 2 feet height*
- *Solar water heater in one bathroom*
- *Branded sanitary ware.*
- *Provision for exhaust fan in bathrooms and kitchen*
- *Video door phone and Intercom facility*

FEATURES OF PROJECTS

- *Earthquake resistance RCC frame structure*
- *AAC blocks walls for low heat transmission*
- *Designer elevation*
- *Designer entrance lobby*
- *Concealed fire resistance copper wiring*
- *LED light in common area with DG backup*
- *2 branded lift with DG back up*
- *Rainwater harvesting*
- *Well planned plumbing for water usage*
- *Firefighting system*
- *Weather proof acrylic good quality paint*

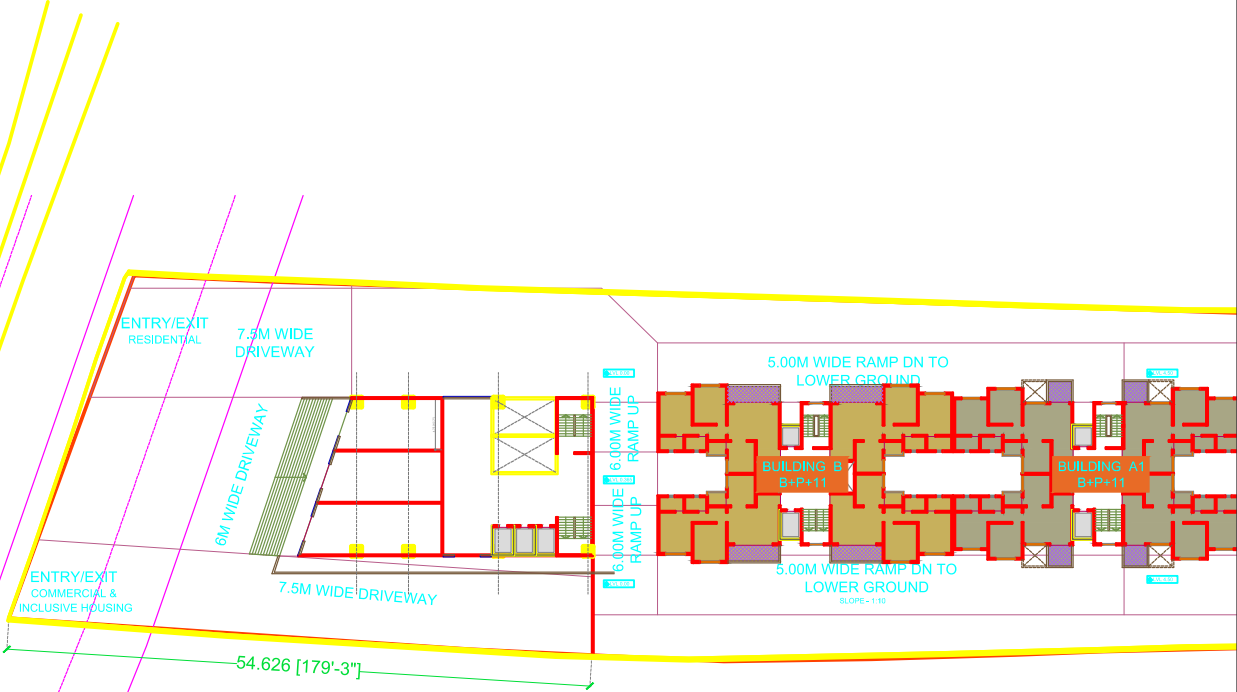


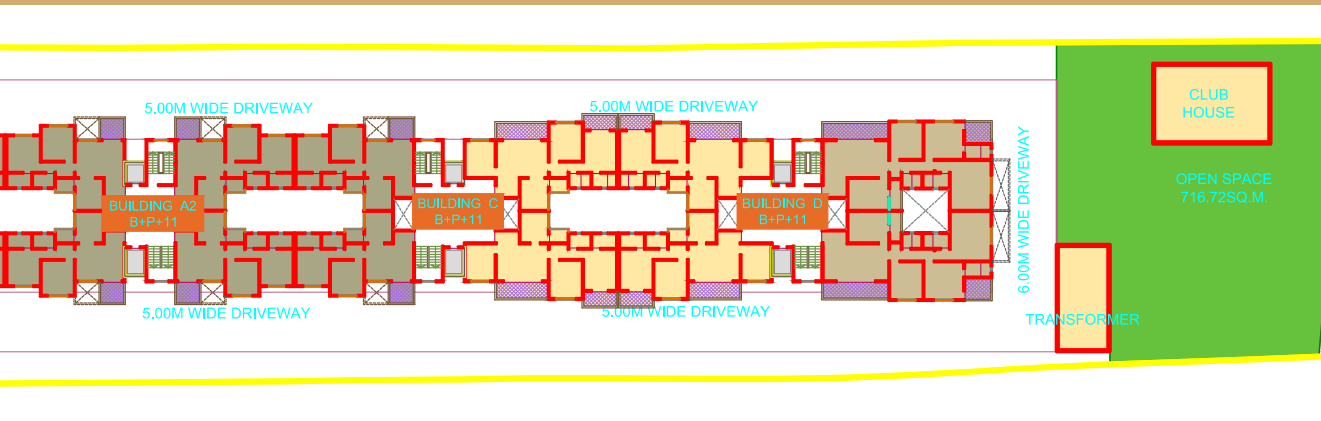


SPECIFICATIONS

The Province brings to life dormant dreams of royal living. Explore idyllic 2, 2.5 & 3 BHK Condos at Punawale, a fast-developing locale with flawless connectivity, robust infrastructure and an ambience of bliss.

MASTER PLAN



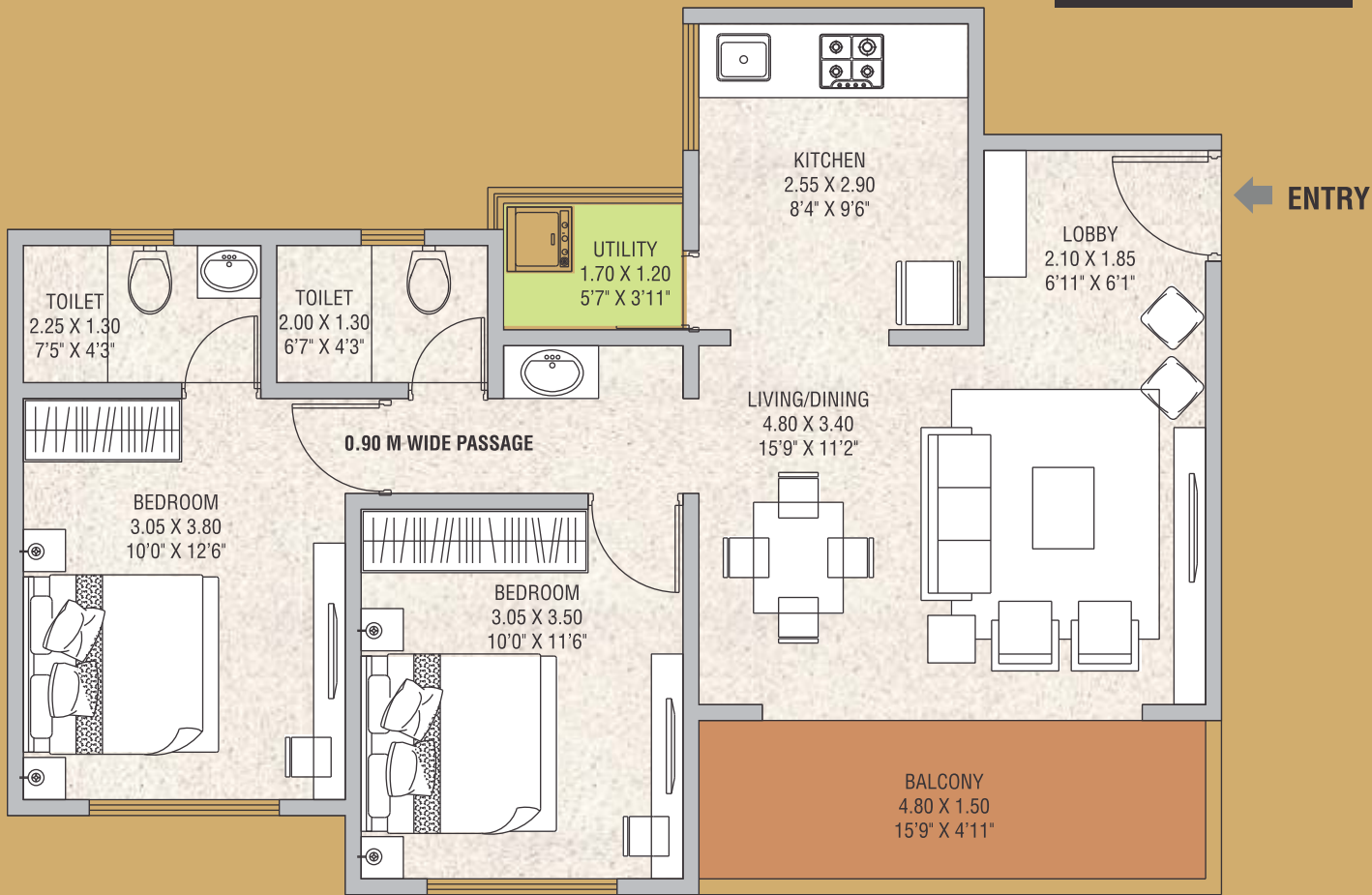


FLOOR PLANS



2 BHK COMFORT

2.0 BHK COMFORT



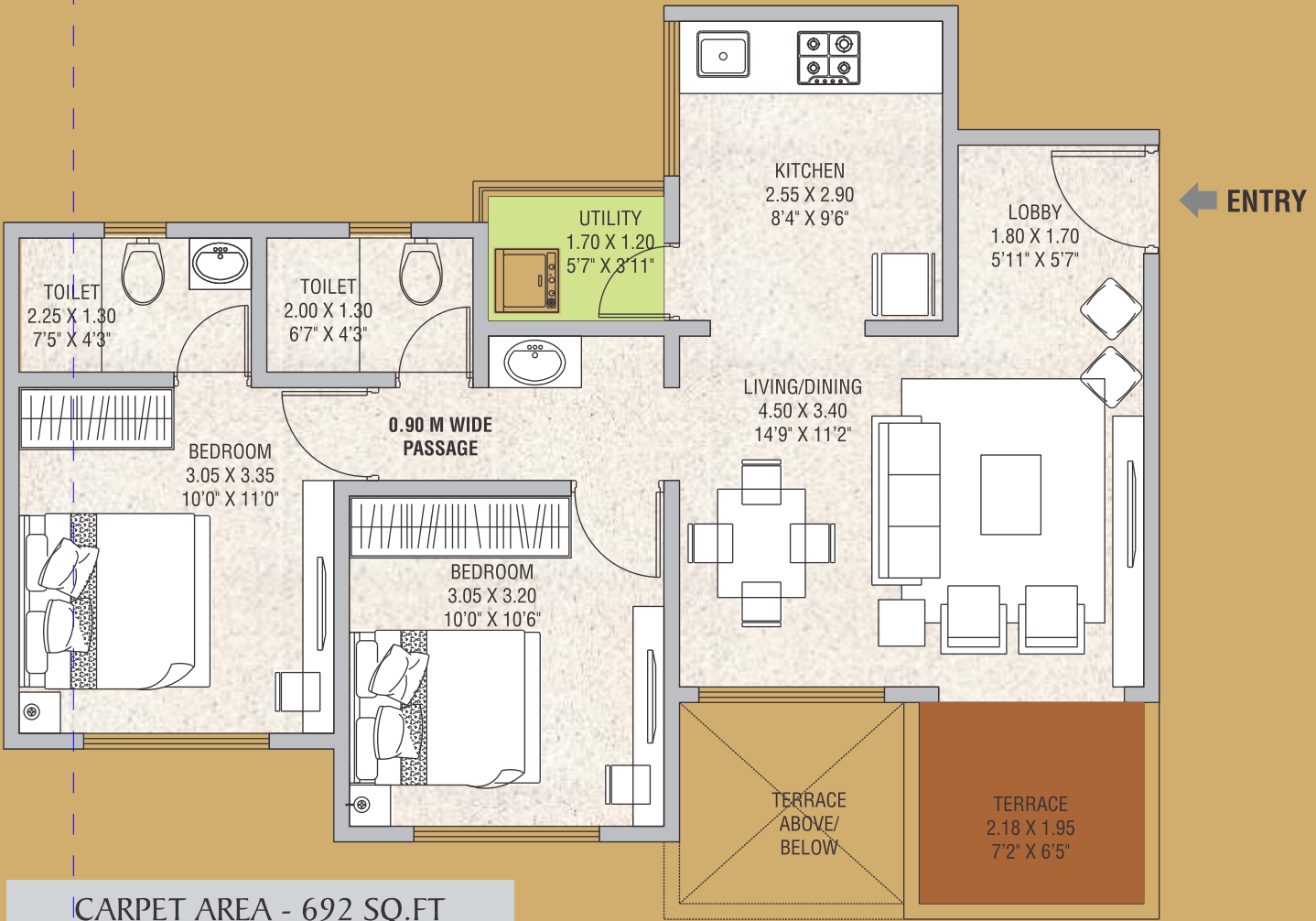
CARPET AREA - 787 SQ.FT

FLOOR PLANS



2 BHK COMPACT

2.0 BHK COMPACT



CARPET AREA - 692 SQ.FT

FLOOR PLANS



2.5 BHK

2.5 BHK



CARPET AREA - 928 SQ.FT

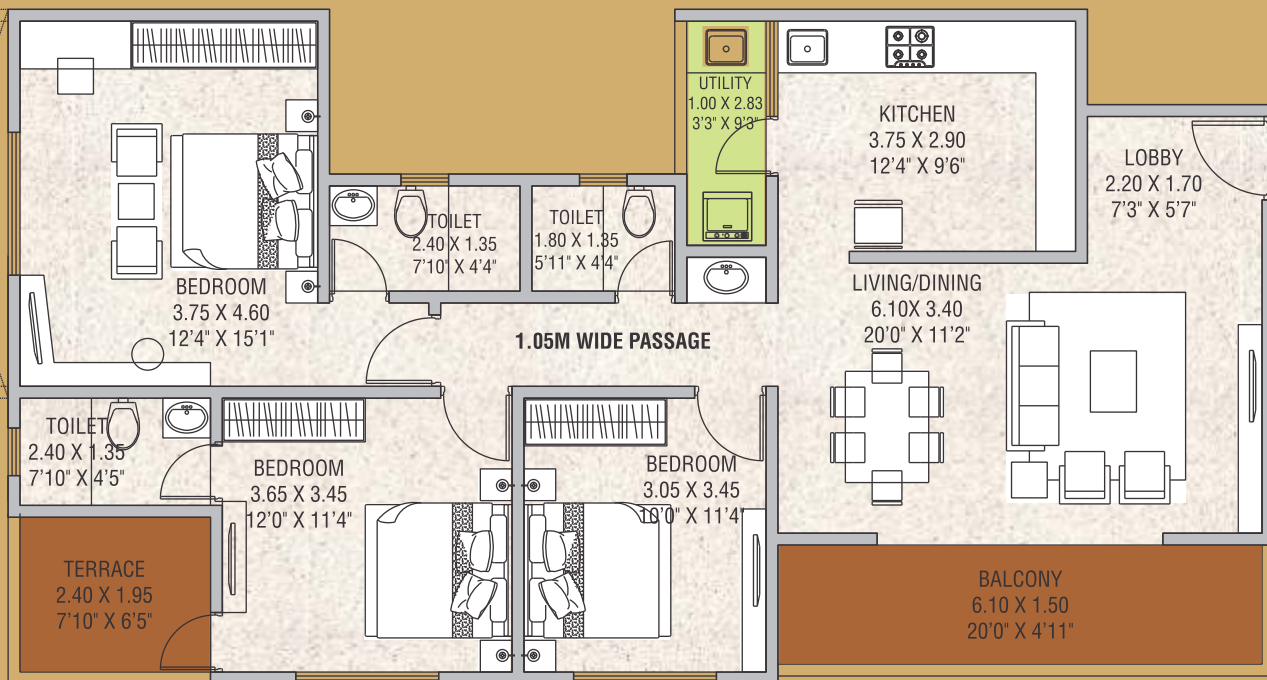


← ENTRY

3 BHK

3 BHK

←
ENTRY



CARPET AREA - 1226 SQ.FT

LOCATION MAP



BHARAT DEVELOPERS

Site Address: 16/3, Punawale, Off Mumbai- Pune Highway, Pune 411033 Tel.: 7263 054 054

Email sales@theprovince.in www.theprovince.in



Disclaimer: The perspective images may not be to the scale or may not represent actual facade / elevation. The details of windows, paints, elevation features, landscaping, ground development, trees etc. in the perspectives is an artist's impression and would be different to actual construction of building and development. The viewers affirm that he / she has not taken his/ her decision of purchase/booking by viewing these perspective. The company is not responsible for the action of the viewer's booking / purchasing a unit relying on these perspective.