



WHOLESOME JEEVAN. AWESOME SARVAM

Source of all energy

Agni is the vital source of energy which we derive from the Sun. Prasun Sarvam plans to harness this energy with solar panels for lighting the common facilities and areas, thus maximizing the use of this natural resource leading to an eco-conscious lifestyle.

AGNI

Save more, Live more

Water is the source of all life on Earth. Prasun Sarvam has consciously adopted means for its careful usage by installing water-saving fittings. Additionally, the rain water harvesting system recharges the ground water and the STP reuses the water for supplementary needs.

JAL

M



PRITHVI

A greener way of life

Nature inspires and nurtures us in many ways. Prasun Sarvam brings you closer to the natural environment by creating more garden area, open spaces, and an evergreen habitat. Here we manage and recycle waste material to produce natural manure in order to make the green areas flourish.

VAYU

A fresh day every day

Pollution-free air is the backbone of a healthy lifestyle. Prasun Sarvam is designed to provide plentiful ventilation within the living areas to welcome a breath of fresh air.

R

AAKASH

From openness to happiness

The sky inspires us to reach greater heights and explore new horizons. Prasun Sarvam lays emphasis on space optimization, enabling more openness and allowing substantial daylight to filter within the living spaces. The placement of buildings enables east side sunlight and west side wind to create an aura of pure freshness.

E

WHERE ALL
FIVE TATVAS
OF LIFE MEET TO FORM A
PERFECT EQUILIBRIUM



A PERFECT EQUILIBRIUM CREATED JUST FOR **YOU**

When five elements of life - Earth, Fire, Sky, Air and Water, come together they create a perfect harmony. Prasn Sarvam is an all-encompassing creation inspired by these elements of life. The project aspires to capture the essence of these tatvas through its design, planning, architecture and aesthetics to provide an all-inclusive yet exclusive living.

Upto 1.5 km

- Bollywood Multiplex - 0.8
- Reliance Smart - 0.8
- Silver Bell Tree School - 1.3
- Shree Hospital - 1.4
- Eon Gyanankur School - 1.5
- Rising Medicare Hospital - 1.5

Upto 3.0 km

- Lexicon Kids, Kharadi - 1.6
- Zensar Technologies - 1.6
- Sneha Speciality Hospital - 2.0
- Vatsalya Hospital - 2.0
- Radisson Blu Hotel - 2.1
- Nagar Highway - 2.1
- Columbia Asia Hospital - 2.3
- WTC - 2.5
- Trinity School - 2.6
- Medipoint Hospital - 2.6
- PVR - Inorbit - 2.7
- EON - 2.9

LESS OF A
LOCATION.
MORE OF A
LANDMARK.

Kharadi not only offers you an excellent connectivity but also elevates your lifestyle to a higher level. The highly acclaimed schools, well-known colleges, IT parks, and entertainment hubs make Kharadi the most upscale cosmopolitan locale of Pune.

Prasun Sarvam is Wholesome Jeevan.

- SCHOOLS
- HOSPITALS
- MALLS / SHOPPING
- ENTERTAINMENT
- HOTELS
- WORK PLACES
- AIRPORT / STATION
- HIGHWAYS

Upto 7.5 km

- Cerebrum It Park - 6.1
- Solapur Highway - 6.4
- Airport - 6.7
- Panchsil Tech Park - 6.7
- Business Bay - 6.7
- Creaticity Mall - 7.2

Upto 6.0 km

- Hyatt - 4.6
- Gold Adlabs - 4.8
- The Bishops Co-ed School - 4.9
- The Orbis School - 5.1
- Magarpatta - 5.1
- The Westin - 5.9

Upto 4.5 km

- Balaji Hospital - 3.1
- Rakshak Hospital - 3.1
- Victorious Kidss Educares - 3.2
- Global High Street - 3.2
- Kothari International School - 3.3
- Lexicon Kids Mundhwa - 3.6
- Phoenix Market City - 4.0
- PVR - Phoenix - 4.0
- Hyatt Regency - 4.2
- Novotel - 4.2
- Oxford World School - 4.3
- Phoenix World School - 4.3
- Seasons - 4.3
- Cinepolis - Seasons - 4.3
- Amanora Town Centre - 4.4
- Inox - Amanora Town Centre - 4.4
- Weikfield It Park - 4.5



EXCLUSIVELY
DESIGNED.
INCLUSIVELY
BUILT.

A SELF-RELIANT ABODE

At Prasun Sarvam, the greener environment, eco-friendly features, and the aspiration to capture the panch-tatvic essence helps you get the best of what the nature has to offer. It is a complete lifestyle project where we aspire to become a self-reliant society.



**MAJESTIC.
WELL-BALANCED.**



*An architectural 3D rendered image for presentation purpose only.



COMMON AMENITIES

ACTIVITY



- Community Hall
- Multipurpose Court
- Children Play Area
- Gymnasium with Indoor and Outdoor Equipments
- Climbing Wall
- Walking Track on the Podium
- Cricket Pitch
- Indoor Games

GREEN



- Toddlers Park
- Landscaped Garden
- Senior Citizen Area
- Solar Lighting System
- STP Unit to Recycle Water
- Compost Machine

COMMON



- Generator Back-up for Lifts and Common Areas
- Grand Entrance
- Furnished Society Office

CREATE YOUR OWN HAPPINESS.



Prasun Sarvam is your gateway to an enriching lifestyle. Well-planned spaces to maximize utilization makes your living a joyful experience. Be the architect of your new home!

SPECIFICATIONS

STRUCTURE:

- Environmentally Sensitive Building, Designed to Resist Seismic Force of Zone III

WALL FINISH:

- AAC Block Masonary
- Sand Faced External Plaster
- Internal Wall & Ceiling in Gypsum Finish

ELECTRICAL:

- Concealed Wiring with Modular Switches
- TV & Telephone Point in Living & Master Bedroom
- Provision for DTH, Broadband & Inverter Point
- AC Point in Living and Master Bedroom
- Exhaust Fan Point in Kitchen & Bathroom
- Separate MCB/ELCB for Each Apartment

PLUMBING:

- Concealed Plumbing with Standard CP Fittings & Sanitary Fixtures
- Brick Bat/ Chemical Double Coat Water Proofing in Bathrooms, Terraces & Dry Balcony

FLOORING:

- 800mm X 800mm Vitrified Tiles in Apartment
- 600mm X 600mm Anti-skid Tiles in Terraces
- 7ft. Designer Dado Tiles in Bathrooms
- Anti-skid Ceramic Tiles in Bathrooms and Dry Balcony
- Granite/ Marble Door Frames for all Bathrooms

WINDOWS & GRILLS:

- Granite Sill for all Windows
- 3-Track Powder-Coated Aluminium Sliding Windows with Mosquito Mesh
- Safety Grill for Window
- Aluminium Louvers with Exhaust Fan Provision in Bathrooms
- MS Railing for Balcony and Terrace

DOORS & DOOR FRAMES:

- Designer Laminate Finish Main Door
- Both Side Laminated Flush Door in Bedrooms and Bathrooms
- Premium Accessories and Fixtures in all Rooms
- Aluminium Sliding Door for Balcony and Terrace

KITCHEN & DRY BALCONY:

- Granite Top Kitchen Platform
- Dado Tiles upto Lintel Level in Kitchen
- Electrical Point for Fridge, Microwave, Water Purifier
- Washing Machine Point in Dry Balcony
- 3 ft. Dado Tiles in Dry Balcony
- Provision for Exhaust Fan

PAINT:

- Internally Semi Acrylic Emulsion Paint
- Externally Weather Shield Acrylic Paint

LIFT LOBBIES:

- Designer Lobby
- Access Control for Lobby

SPECIAL FEATURES

- Glass Partition in Master Bathroom
- False Ceiling in Bathrooms
- LED Tube Lights and Fans in Entire Flat
- Kitchen Trolleys Below Platform
- Vegetable Sink in the Kitchen
- Stainless Steel Sink for Washing in Dry Balcony
- Mirror on Wash Basin in Master Bathroom
- Digital Lock for Main Door
- Regulated Pipe Gas System (as per Govt. norms)



2 BHK

1. LIVING	: 4.45X3.53 (14'7"X11'7")
	: 3.05X1.33 (10'0"X4'4")
2. BALCONY	: 2.95X1.90 (9'8"X6'3")
3. KITCHEN	: 2.75X2.40 (9'0"X7'10")
4. DRY BALCONY	: 1.25X2.40 (4'1"X7'10")
5. TOILET	: 1.35X1.70 (4'5"X5'7")
6. PASSAGE	: 1.35X1.48 (4'5"X4'10")
7. BEDROOM	: 2.75X3.35 (9'0"X11'0")
8. BEDROOM	: 3.15X3.85 (10'4"X12'8")
9. TOILET	: 2.25X1.35 (7'5"X4'5")
10. TERRACE	: 3.05X1.53 (10'0"X5'0")

20+ YEARS OF CONSTRUCTING HAPPY LIVES

At Prasad Homes, we believe in creating value that can last a lifetime. We plan our projects keeping futuristic trends in mind while creating a sustainable lifestyle. We adhere to stringent quality norms and understand our customers' aspirations to create spaces which reflect their dreams. Our relentless quest to make a difference in our customers' lives inspires us to innovate and push ourselves to create landmarks.

PROJECTS



TRUST

VALUE

INNOVATION

COMMITMENT

2 BHK Apartments @ Kharadi



PRASUN SENATE



1 & 2 BHK Apartments @ Wanowrie



QUALITY



2 BHK Apartments @ Dhanori



Shops & Offices @ Dhanori



1 & 2 BHK Apartments @ Thergaon, Chinchwad



ECO FRIENDLY MATERIALS

- ECO CONSCIOUS APPROACH

AN ALL-INCLUSIVE ENVIRONMENT

- MORE OPEN SPACES
- MORE NATURAL LIGHT

EFFICIENT LANDSCAPING

- EAST WEST OPEN LAYOUT
- MAXIMUM VENTILATION

ENERGY EFFICIENT

- SOLAR CONVERTED ENERGY

WATER MANAGEMENT

- REGULATE
- REUSE
- RECHARGE





*An architectural 3D rendered image for presentation purpose only.

CREDITS:



DESIGN ARCHITECT
Sumit & Bansri Kumath

LIASONING ARCHITECT
Rahul Malwadkar



R.C.C.
G. A. Bhilare Consultant Pvt. Ltd.



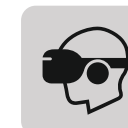
LANDSCAPE
Combinashions



MEP
Urjal Consultant
Silver Line Electrical



LEGAL ADVISOR
Adv. Prasanna Darade



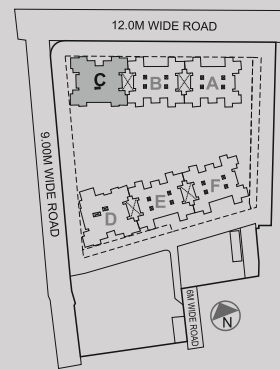
3D & VR
Digital Art (I) Pvt. Ltd.



BRAND & MEDIA
Silk Route

WING-C

ODD FLOOR PLAN



Area statement in sq.m

Flat No.	Carpet	Balcony-1	Dry. Bal.	Terrace-1	Total
001	59.52	5.80	3.00	-	68.32
002					
003					
004					

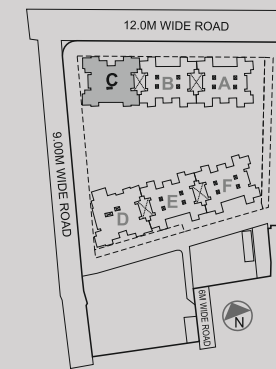
MAHA-RERA Regn. No.: P52100021383
Available at www.maharera.mahaonline.gov.in

*Floor plans are not to scale.

*Disclaimer: This plan is for space planning purpose only. All dimensions are unfinished structural dimensions, variation in our RERA areas may occur on account of planning constraints/ site conditions/ columns/ finishing. Furniture, Fixtures, Accessories, and Furnishings shown in the plan are only representation and shall not be provided in the actual flat.

WING-C

EVEN FLOOR PLAN



Area statement in sq.m

Flat No.	Carpet	Balcony-1	Dry. Bal.	Terrace-1	Total
001	59.52	5.80	3.00	-	68.32
002	59.58	5.80	3.00	4.90	73.27
003	59.58	5.80	3.00	4.67	73.04
004	59.52	5.80	3.00	5.74	74.06

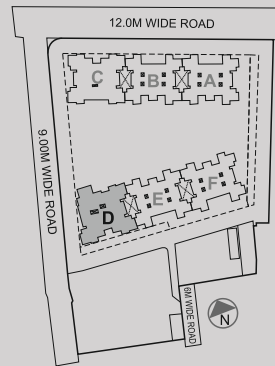
MAHA-RERA Regn. No.: P52100021383
Available at www.maharera.mahaonline.gov.in

*Floor plans are not to scale.

*Disclaimer: This plan is for space planning purpose only. All dimensions are unfinished structural dimensions, variation in our RERA areas may occur on account of planning constraints/ site conditions/ columns/ finishing. Furniture, Fixtures, Accessories, and Furnishings shown in the plan are only representation and shall not be provided in the actual flat.

WING-D

ODD FLOOR PLAN



Area statement in sq.m

Flat No.	Carpet	Balcony-1	Dry. Bal.	Terrace-1	Total
001					
002	59.52	5.80	3.00	-	68.32
003					
004	59.48	5.80	3.00	-	68.28

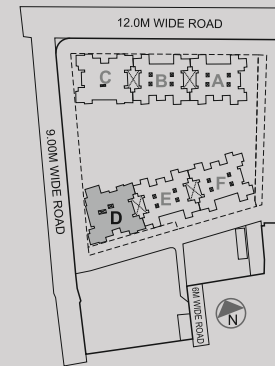
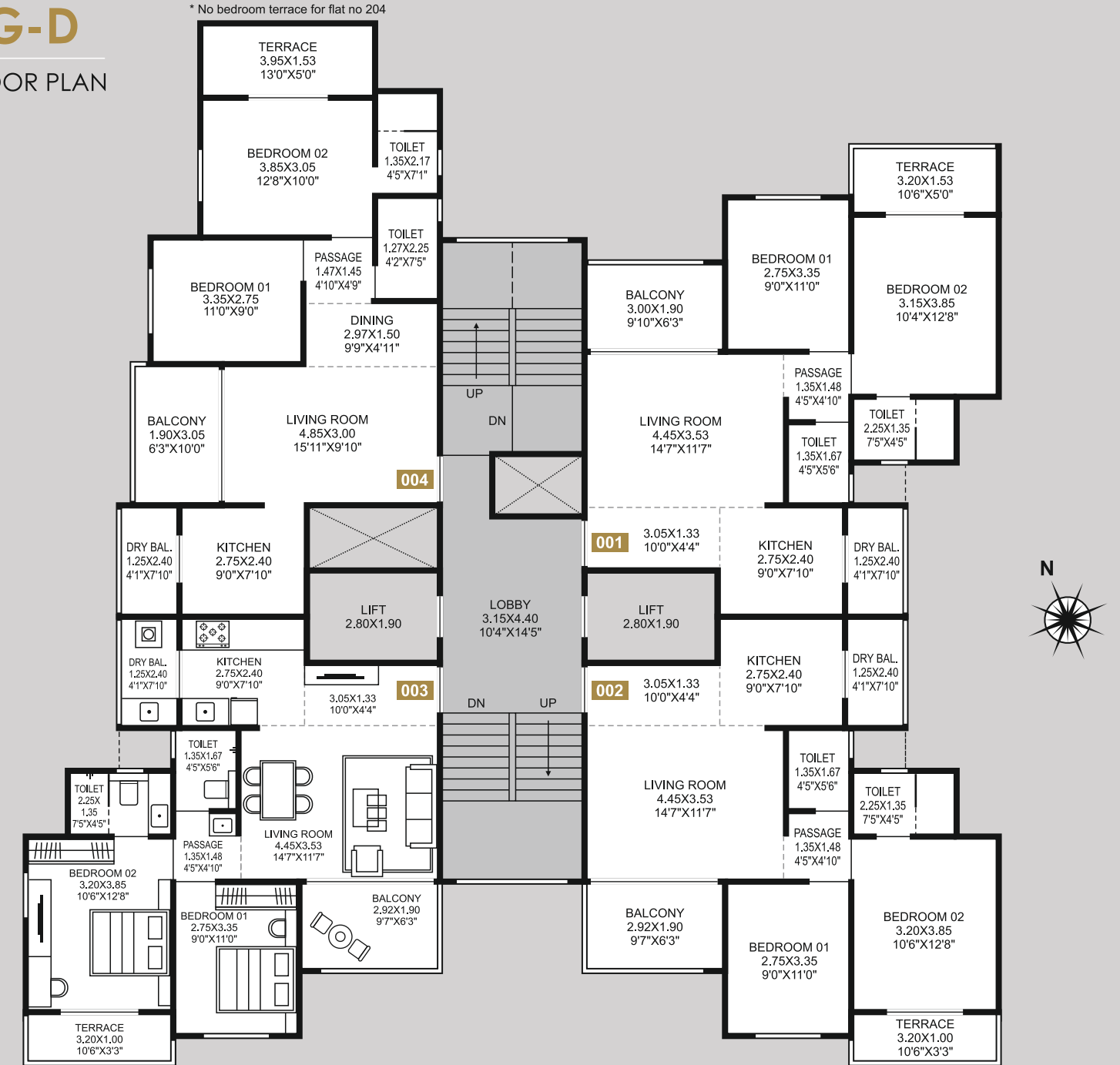
MAHA-RERA Regn. No.: P52100021383
Available at www.maharera.mahaonline.gov.in

*Floor plans are not to scale.

*Disclaimer: This plan is for space planning purpose only. All dimensions are unfinished structural dimensions, variation in our RERA areas may occur on account of planning constraints/ site conditions/ columns/ finishing. Furniture, Fixtures, Accessories, and Furnishings shown in the plan are only representation and shall not be provided in the actual flat.

WING-D

EVEN FLOOR PLAN



Area statement in sq.m

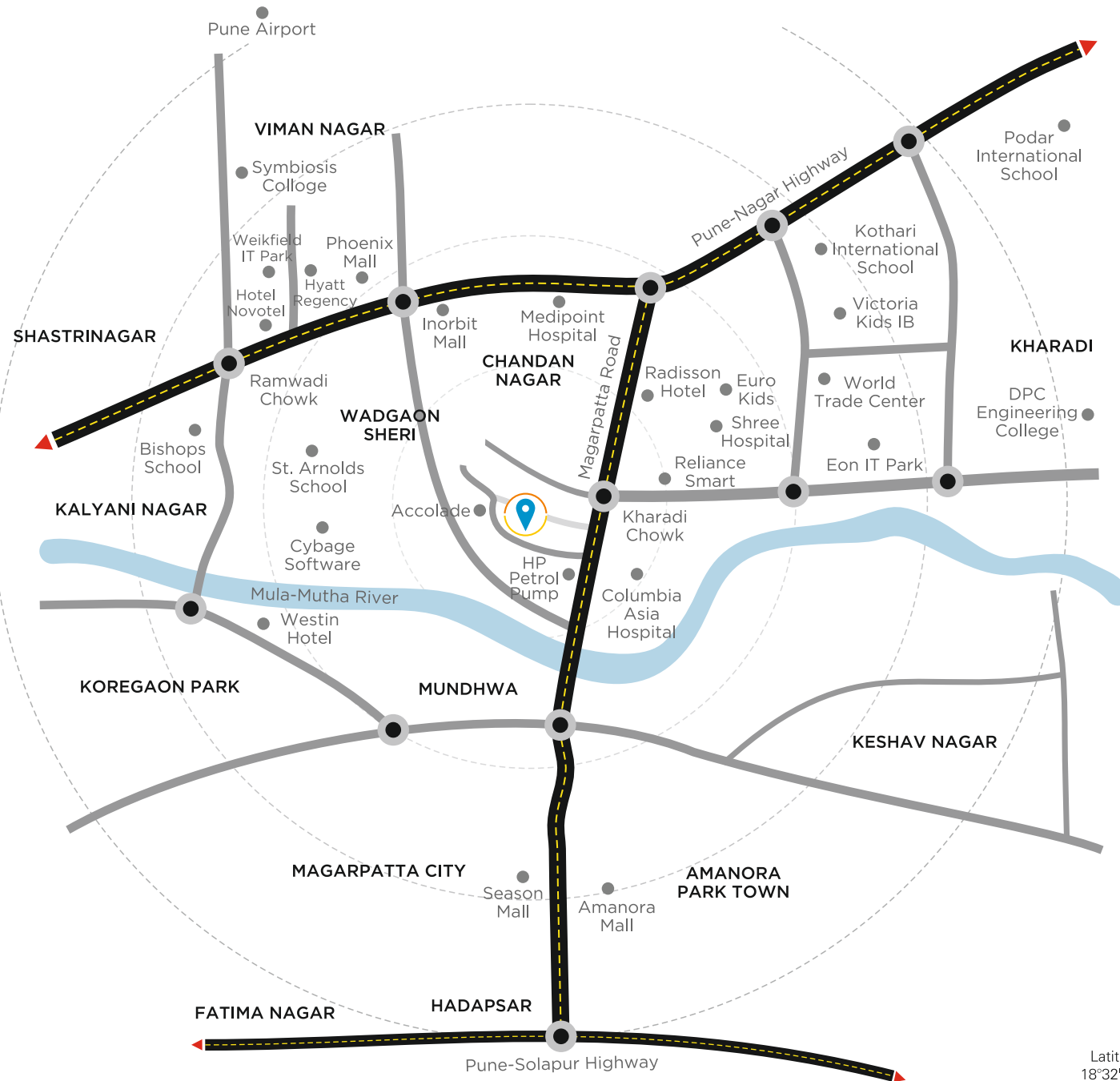
Flat No.	Carpet	Balcony-1	Dry. Bal.	Terrace-1	Total
001	59.58	5.80	3.00	4.90	73.27
002	59.58	5.80	3.00	3.20	71.58
003					
004	59.48	5.80	3.00	6.03	74.31

MAHA-RERA Regn. No.: P52100021383
Available at www.maharera.mahaonline.gov.in

*Floor plans are not to scale.

*Disclaimer: This plan is for space planning purpose only. All dimensions are unfinished structural dimensions, variation in our RERA areas may occur on account of planning constraints/ site conditions/ columns/ finishing. Furniture, Fixtures, Accessories, and Furnishings shown in the plan are only representation and shall not be provided in the actual flat.

LOCATION MAP



*Not to scale
Latitude and Longitude:
18°32'53.7"N 73°56'01.9"E



PRASUN ASSOCIATES
PROMOTERS AND BUILDERS

www.prasunhomes.com

Site: S.No.10/2A/23 to 26, Near Accolade, Kharadi, Haveli, Pune - 411015

Call: +91 911 22 00014/15

Email: sales@prasunsarvam.com | www.prasunsarvam.com



MAHA-RERA Regn. No.:
P52100021383

Available at
www.maharera.mahaonline.gov.in



Disclaimer: The contents/ pictures/ images/ renderings/ maps are purely indicative in nature and are artist's conception and not actual depiction of the buildings/ landscapes etc. and shall not be considered as our offer/ promise/ commitment of any nature in respect of the project. The common areas that have been shown in any form whatsoever is/are for the entire building or phase of the Project and that the common areas will not be available on completion of the first phase of the Project or later phases. The common areas shall be available for the entire building and will be developed in a Phase-wise manner, over a period of time and will be completed and handed over after all phases are completed and we have no objection for the same. You are requested to contact our Sales Team to understand the current details regarding the project and only after thorough understanding about the same, make a decision to book the apartment/s in the project.