



प्रधानमंत्री
आवास योजना



MAHARERA Reg. No.
P99000018246



PATIL BUILDERS

Contact No. : Sachin - 7620583329 / Ravi Patil - 8888805000

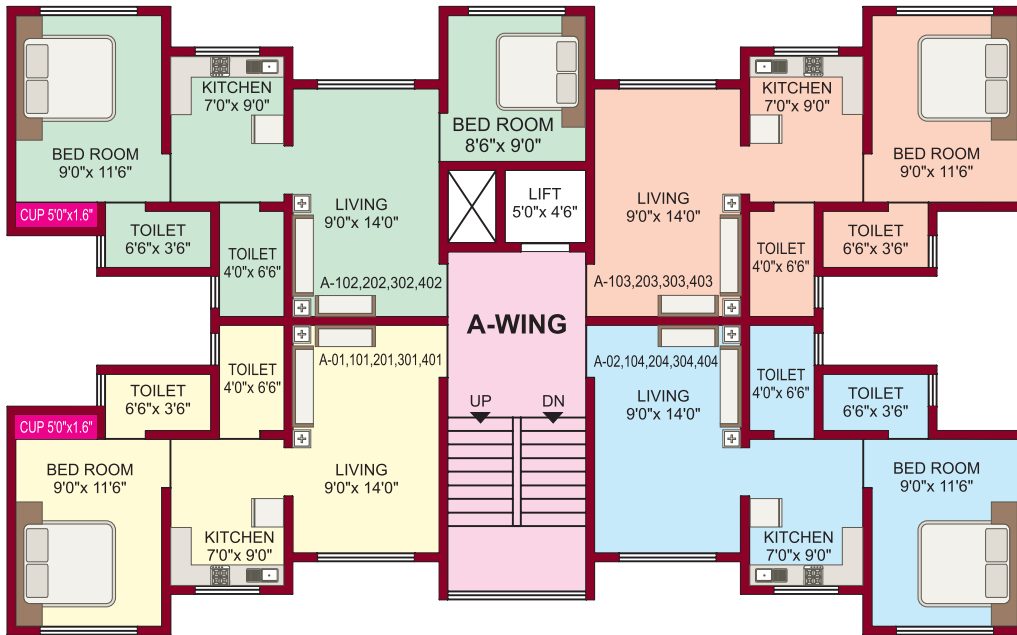




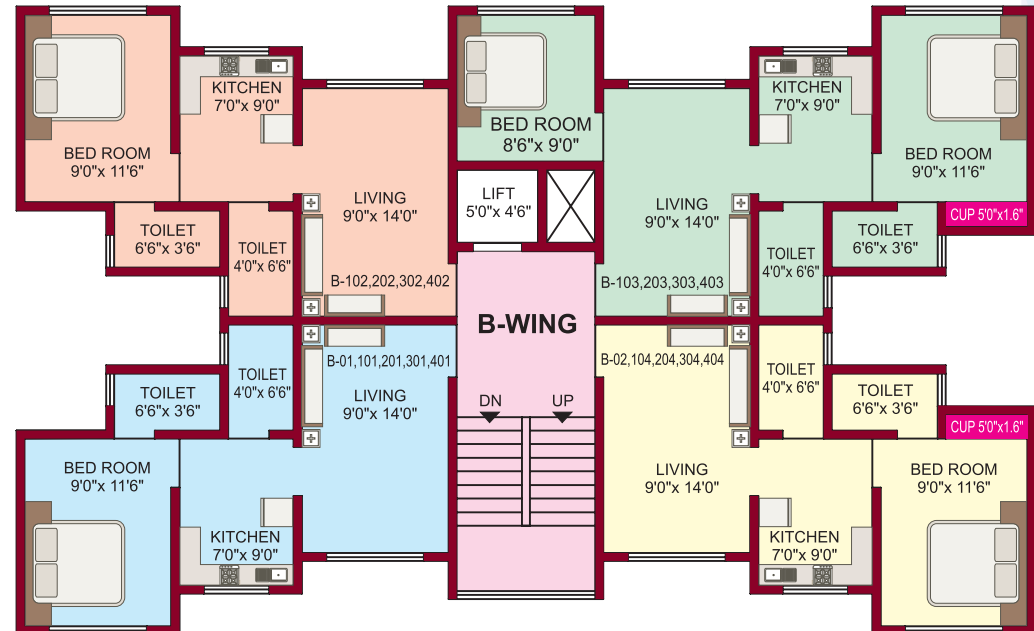




TYPICAL FLOOR PLAN Ground, 1st To 4th FLOOR PLAN



TYPICAL FLOOR PLAN Ground, 1st To 4th FLOOR PLAN





PROPOSE VIRAR TO DAHANU ROAD
FOUR TRACK RAILWAY



TANDULWADI FORT - 9 KM



KARWALE DAM - 0.5 KM



PATIL
BUILDERS



PATIL GROUP



KELVA BEACH & FORT - 10 KM



PROPOSE VIRAR-SAPHALE VIA TEMBHIKHODAVE RO RO CAR FERRY SERVICE



Features

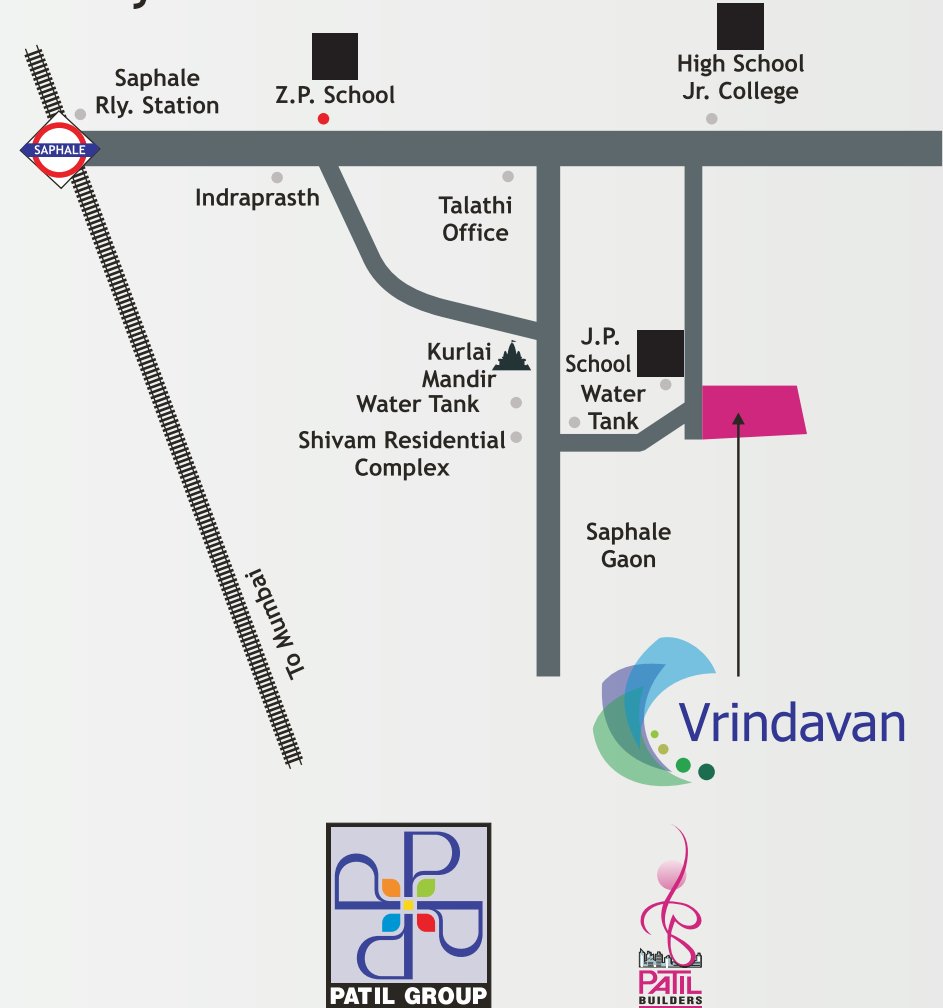
- A luxurious Peaceful & lush Green TownShip.
- Good Quality Elevator (Lift).
- Landscape Garden & Children Play Area.
- Generator Back up For Lift, Staircase, & passage.
- 10 Min. Walking Distance from Station.
- Surrounded By School & Collage..
- Easy Loan Facility.
- Ample Parking.
- Vastu Compliant.

Amenities

- Internal Walls With Good Quality Paints.
- Heavy Section Powder Coated Aluminum Windows.
- Concealed Wiring & Plumbing.
- T. V. & Net Point Connection provision.
- Good Quality Vitrified Tiles.
- Granite Platform With S. S. Sink & Ceramic Tiles Dado.
- Provision For Water Purifier & Water Heater.
- Decorative Ceiling With LED Light In Hall.
- Wall Designed Toilet / Bath With Sanitary Wares Of Reputed make, Designer Tiles up to Door Height.



Key Plan



BUILDERS AND DEVELOPERS
PATIL BUILDERS
 103, B, Kamat Park,
 Virar (East), Pin - 401 103.

ARCHITECT
SAIRACHANA
 Palghar

LEGAL ADVISOR
 Adv. Dipak Bhate
 Palghar

RCC CONSULTANT
 Shilplekha Consultant
 Virar (W).

Site Add. : Saphale Gaon, Near Z. P. School No. 2, Next To Kurlai Mandir, Saphale - East, Tal. Dist. : Palghar, Pin - 401 102.
 E-mail : patilgroup3@gmail.com

Notes

All legal document charges, service tax, stamp duty and Electric meter charges to be born by the purchaser.
 Only internal changes shall be allowed with prior permission and shall be charges extra.
 No external changes will be allowed.
 The right to changing the plans fully or partly or specification or amenities mentioned are reserved with the developers.
 The developer reserves the all right to make any amendments in constructions as may be necessary.
 All plans, specifications or information in this brochure can not form part of an offer, contract or agreement.
 All plans in this brochure are not as per scale.