

A LIFE  
DESIGNED  
— *for* —  
ELEGANCE



Anantmani

FOCUSSED ON THE INFINITE





ELEGANCE  
*is*  
ETERNAL



When Luxury gets entwined with practical  
life expectations, lifestyle becomes elegant.

Welcome to a world that stands tall,  
Amidst the sky of North Kolkata,  
Conceived with a focus on daily life experiences,  
Embedded with fine luxuries,  
Designed with passion and attention to detail.  
Built by the connoisseurs of luxury.

Welcome to **Anantmani**.





AN ICONIC  
LANDMARK

WHERE HEIGHTS  
DEFINE VIEW  
*of*  
ELEGANCE



Sky scaling Landmark  
of North Kolkata



A SUPERLATIVE  
LIFE EXPERIENCE

WHERE  
ELEGANCE  
REDEFINES  
— *your* —  
STYLE OF  
LIVING



Super-spacious Residences







A PRIVILEGED  
LUXURY  
COMMUNITY

WHERE ELEGANCE  
REFLECTS

*in*

HEALTH, LEISURE  
& RECREATION



Beautifully designed lifestyle amenities on  
ground and podium levels



Anantmani

A LIFE FOCUSED  
*on the* INFINITE



### INFINITE VISTAS

Sky scaling landmark of North Kolkata offering beautiful views of the city from each residence



### INFINITE INDULGENCES

Health, Leisure and Recreational Amenities on the Ground & Podium Level across 50000 Sq. Ft.



### INFINITE OPULENCE

An Extravagant Community Lifestyle with a 2 Level Gymnasium, Banquet Hall, Lavish Lobbies, Advanced Security and Much More



### INFINITE LIVING

Signature Common Spaces with Central Air-conditioning, Imported Marble Flooring and other World-class finishes



### INFINITE REACH

Excellent Connected Landmark with Major Schools, Business Centers, Hospitals, Malls, Multiplexes and Restaurants within close proximity



A VIEW OF LIFE  
*with*  
A WORLD WITHIN REACH

VIP Road Towards Airport

Bridge towards  
EM Bypass

Salt Lake Stadium

Hudco More

Tata Telecommunication Building

Swarnamani

Mani Kala

JW Marriott

Road towards Kankurgachi

DVC Building

The 42

The Tallest and Pinnacle of Luxury Residences in the East

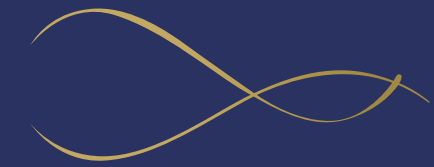
Howrah Bridge



# THE LANDMARK LOCATION

with

## EXCELLENT CONNECTIVITY AND CONVENIENCES



### Location Advantages



#### Connectivity

- CIT Road - 100 mtr
- VIP Road - 400 mtr
- EM Bypass - 700 mtr
- Chitpur Railway Station - 5.3 kms
- Howrah Railway Station - 8.1 kms
- Airport - 8.7 kms



#### Lifestyle & Entertainment

- Pantaloons - 1.8 kms
- City Centre I - 2.4 kms
- Mani Square Mall - 2.7 kms
- Swabhumi - 2.7 kms
- Big Bazaar - 3.6 kms
- Nicco Park - 6.1 kms



#### Hotels & Restaurants

- Hotel Gallery 67 - 650 mtr
- Fly Kouzina - 1.7 kms
- Hotel Raj Kutir - 2.9 kms
- Hyatt - 3.2 kms
- JW Marriott - 6.6 kms
- ITC Royal Bengal - 6.7 kms



#### Healthcare Centres

- Apollo Gleneagles - 2.6 kms
- ILS Hospital - 2.6 kms
- Manipal Hospital - 3.8 kms
- AMRI - 4.1 kms





Anantmani

FOCUSSED ON THE INFINITE

WELCOME TO  
*the*  
LANDMARK OF  
INFINITE ELEGANCE



Project Highlights

4 Acre Gated Luxury Community

3 Sky-scaling Towers

1 - Sadashiva B+G+31

2 - Mahadeva B+G+31

3 - Gandharya B+G+27

4 BHK Super-spacious Homes

Private Garden in Select Few Residences

Homes with Triple Height Terraces

Abundant Open Space

Outdoor Health and Recreation on Ground & Podium Level

Lavish Club Life Avenues on 2 Levels

Advanced Security & CCTV Surveillance







A DESTINATION  
OF INFINITE ELEGANCE  
— Marks —  
YOUR GRAND ARRIVAL



Grand Entrance with a Foyer Garden near the Drop-off area





EXPERIENCE  
270° PANORAMA  
— of —  
INFINITE VIEWS



Sky Sealing Landmark offering Homes  
with Triple Height Sundecks







A LIFE WITH LUXURY  
*of*  
TRIPLE HEIGHT SUNDECKS



Luxury Homes with Triple Height Sundecks



AN ELEGANT LIVING  
*with*  
LAVISH LIFE EXPERIENCES



Vastu Complaint Well-Planned Spaces





AN ELEGANT LIFESTYLE  
EMBRACED *By*  
INFINITE INDULGENCE

Landscaped Lifestyle  
Across Ground Level and Podium Level

Indulgences on Ground Level

- Designer Lawn
- Cascading Water Wall
- Cricket Net
- Badminton Court

Lifestyle Avenues on Podium Level (Outdoors)

- Podium Landscaped Garden
- Amphitheatre
- Poolside Barbeque
- Swimming Pool
- Poolside Deck & Changing Rooms
- Kids Fun Pool
- Family Jacuzzi
- Fountain Pool
- Well-equipped Kids Play Area
- Half Basketball Court
- Jogging Track and Walkways

Lavish Club Life Features (Indoors)

- 2 Level Gymnasium
- Spa, Steam & Sauna
- Banquet Hall with Party Lawn
- Indoor Games Arena
- Toddler's Play Zone & Activity Room
- Exclusive Sitting Lounge
- Yoga & Meditation Room





ELEVATE  
YOUR LIFESTYLE  
*in*  
THE ELEGANCE OF  
CLUB LIFE LUXURIES



EXTRAORDINARY  
LIFESTYLE FEATURES  
ON GROUND AND  
PODIUM LEVEL



# NORTH KOLKATA'S SIGNATURE PODIUM RECREATION

*giving*  
INFINITE PLEASURES  
OF LIFE



World-class Podium Indulgences  
with Club Life Experiences  
Spread Across 50,000 Sq. Ft.







TAKE A REFRESHING DIP  
— *let* —  
REJUVENATION RISE



Swimming Pool with Deck, Changing Rooms  
and Poolside Barbeque



AN EVENTFUL ARENA  
*to*  
PLAY, PERFORM & ENJOY



Amphitheatre with Informal Seating  
and Entertainment Zone





PEACE, COMFORT  
AND LEISURE  
*for*  
ALL WALKS OF LIFE



Designer Lawn with Walkways



LET LIFE FLOW  
*in*  
THE CALMING BLUES



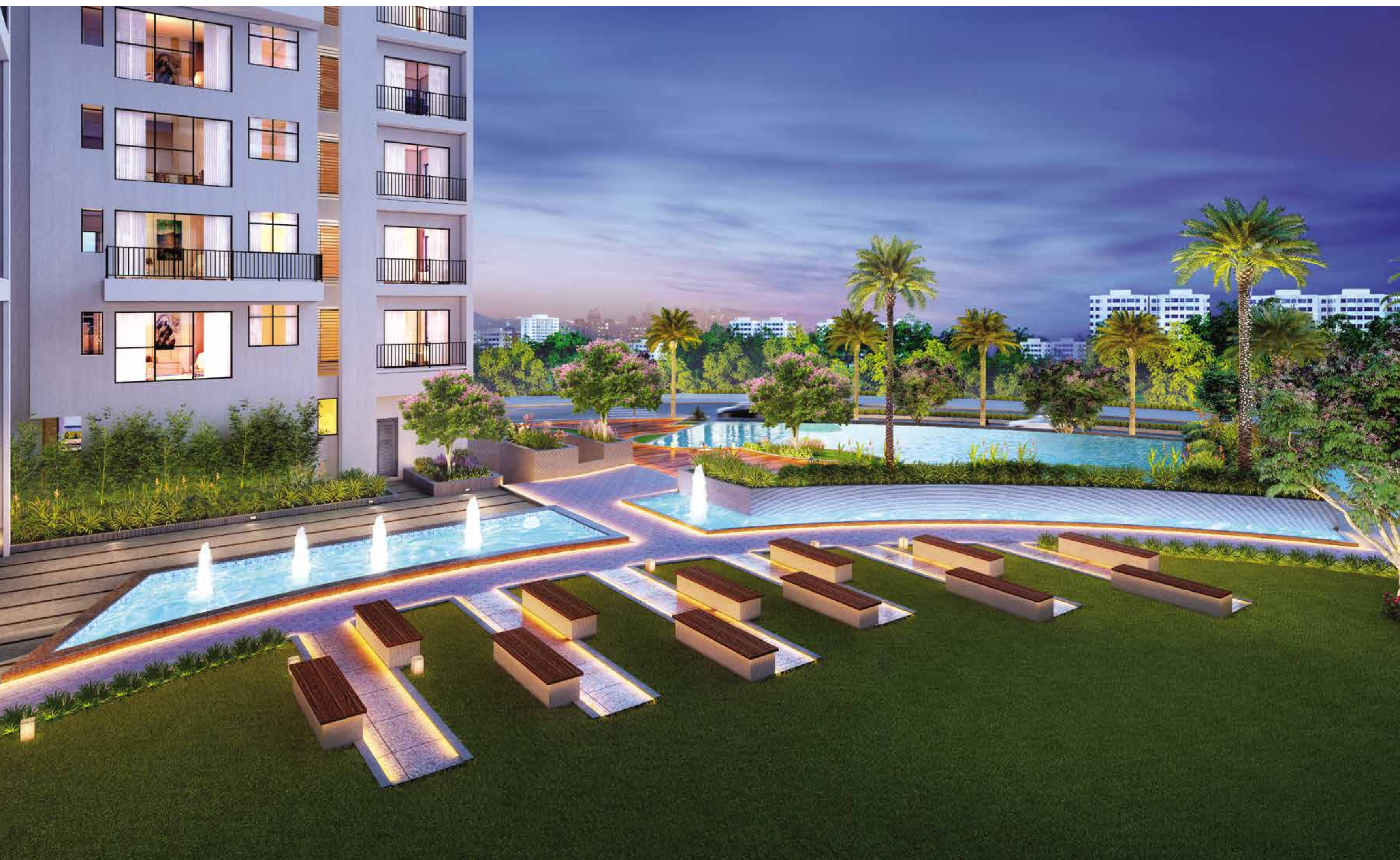
Cascading Water Wall



WHERE BLISS  
SPRINGS UP  
*Over*  
AND OVER AGAIN



Exquisite Open-Air Garden  
with Soothing Fountain Pool







LIFE'S CELEBRATION  
*with*  
A GREEN CARPET WELCOME



Lush Green Lawn for Parties & Get-together





IMPROVE  
YOUR GAME  
*enhance*  
YOUR SKILL



Net Cricket Pitch (Ground Level)

FOCUS ON PLAY  
*to*  
ACHIEVE YOUR AIM



Badminton Court (Ground Level)







MEMORIES OF CHILDHOOD  
— Come —  
ALIVE & AWESOME



Well-equipped Kids Play Area



PULL THE GAME  
*Put*  
THE BEST FOOT FORWARD

  
Half Basketball Court







SOUL SOOTHING  
— *Secret* —  
FOR YOUR EYES ONLY



Cascading Water Wall



GIVE YOUR BEST SHOT

— *Keep* —

YOURSELF FIT



Badminton Court







SPLASHES OF FUN  
— *Freshness* —  
OF SMILES

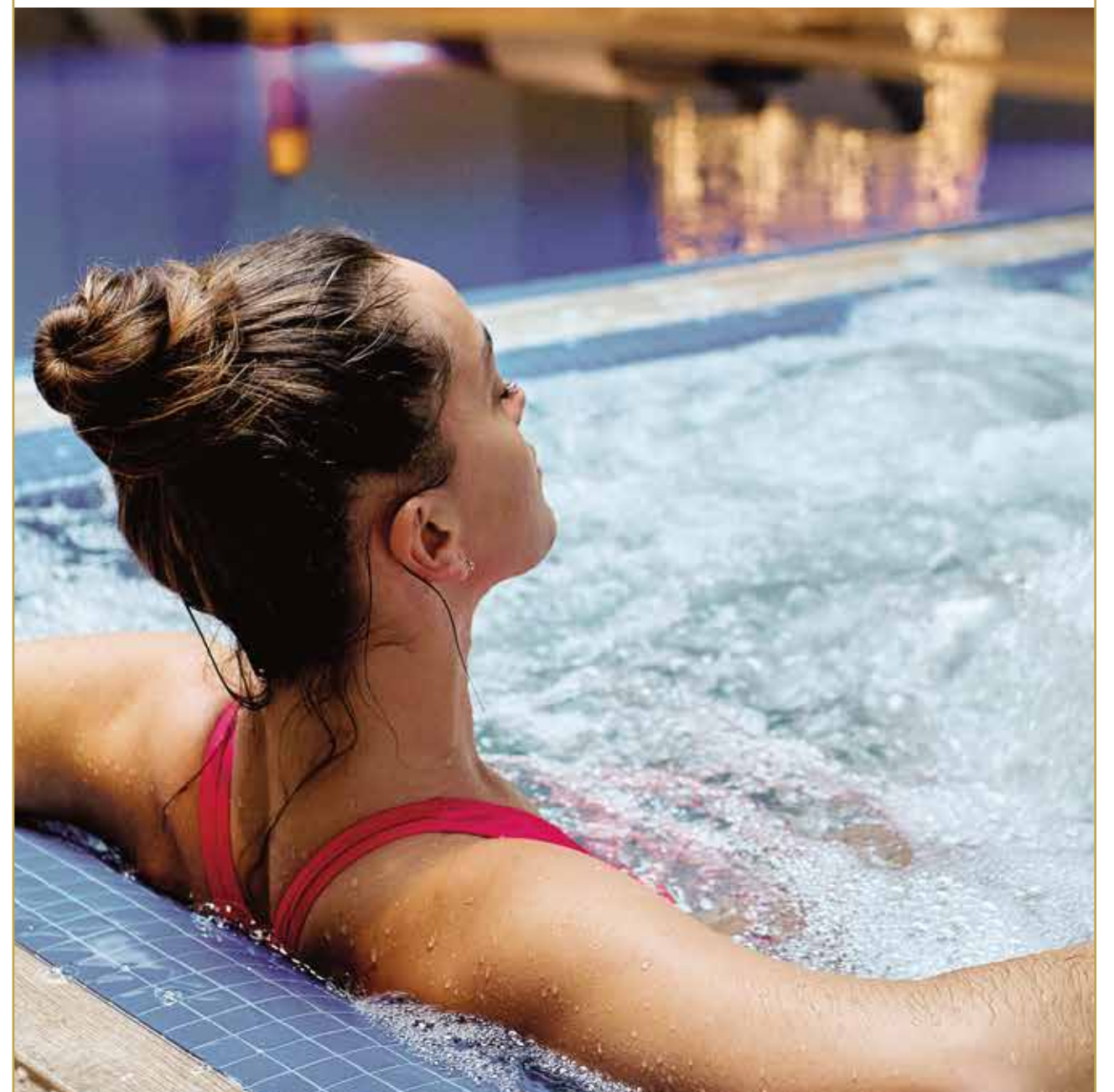


Kids Fun Pool

SOAK UP  
IN PLEASURES  
— *Immerse* —  
IN COMFORTS



Family Jacuzzi

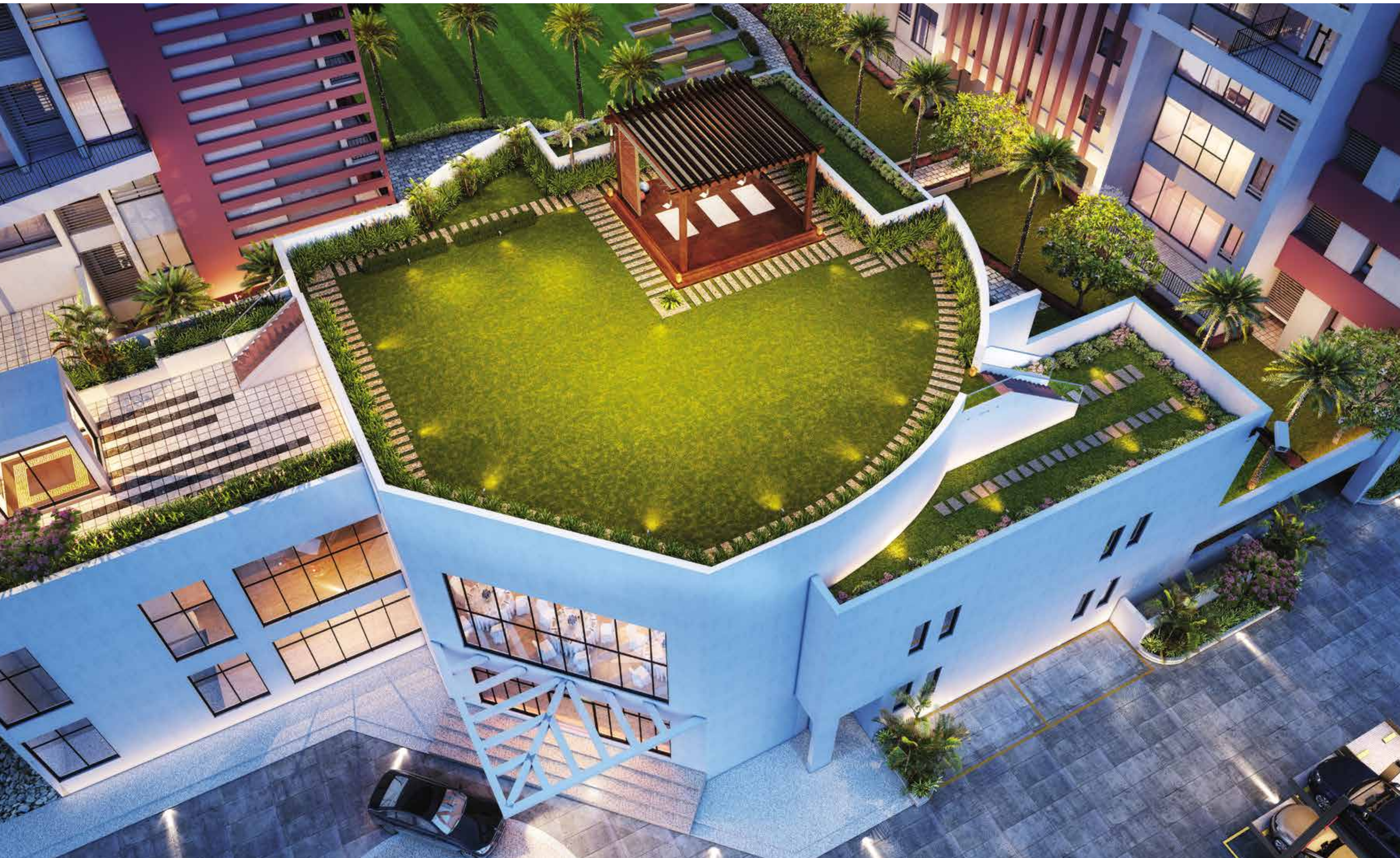




ICONIC AVENUE FOR YOU  
*to*  
HOST CELEBRATIONS TO REMEMBER



Double Layered Banquet Hall with  
Yoga Deck on the Rooftop







Representational Images

REJOICE, RECREATE, CELEBRATE  
— *Life* —  
IS A BIG EVENT



Double Layered Banquet Hall  
with Separate Pre-Function Area



WHERE MIND SURRENDERS  
*And*  
SOUL ELEVATE



Yoga & Meditation Zone







WHERE  
CHILDHOOD GROWS  
*Where*  
LITTLE JOYS PLAY



Toddler's Play Zone & Activity Room

A DESTINATION  
OF RELAXATION  
*a*  
VENUE TO SPEND  
QUALITY TIME



Exclusive Sitting Lounge







YOUR HEALTHY WORKOUT  
— Meets —  
A DREAM FITNESS WORLD



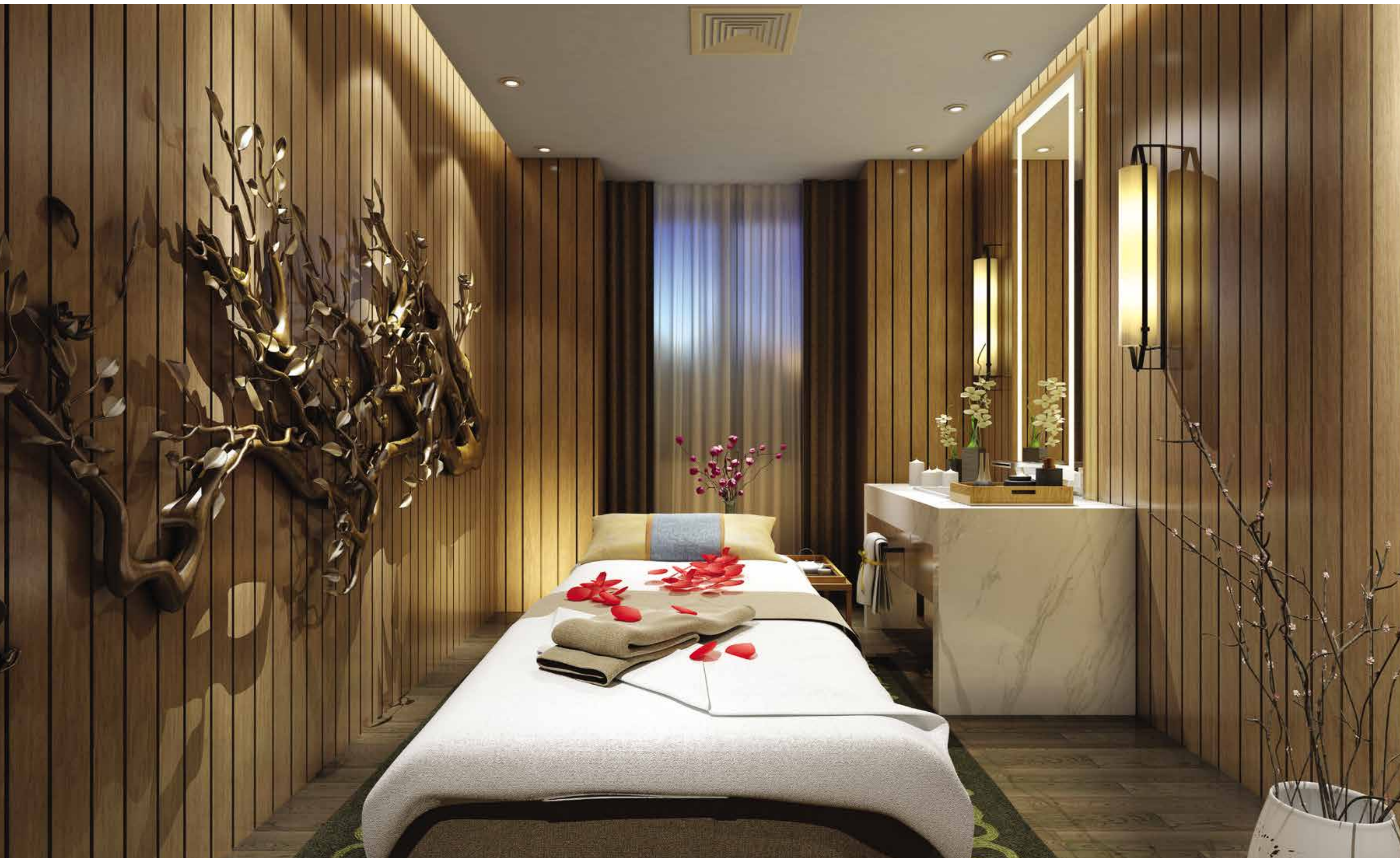
Double Layered Gym with  
Modern Equipments



SOUL SURRENDERS  
TO CALM  
— *Senses* —  
RESIGN TO REVIVAL



Spa, Steam & Sauna







PLAY TOGETHER,  
ENJOY TOGETHER  
— Cherish —  
LIFE WITH FRIENDS

  
World-class Indoor Games Arena





A SAFE HEAVEN  
*for*  
YOU AND YOUR FAMILY

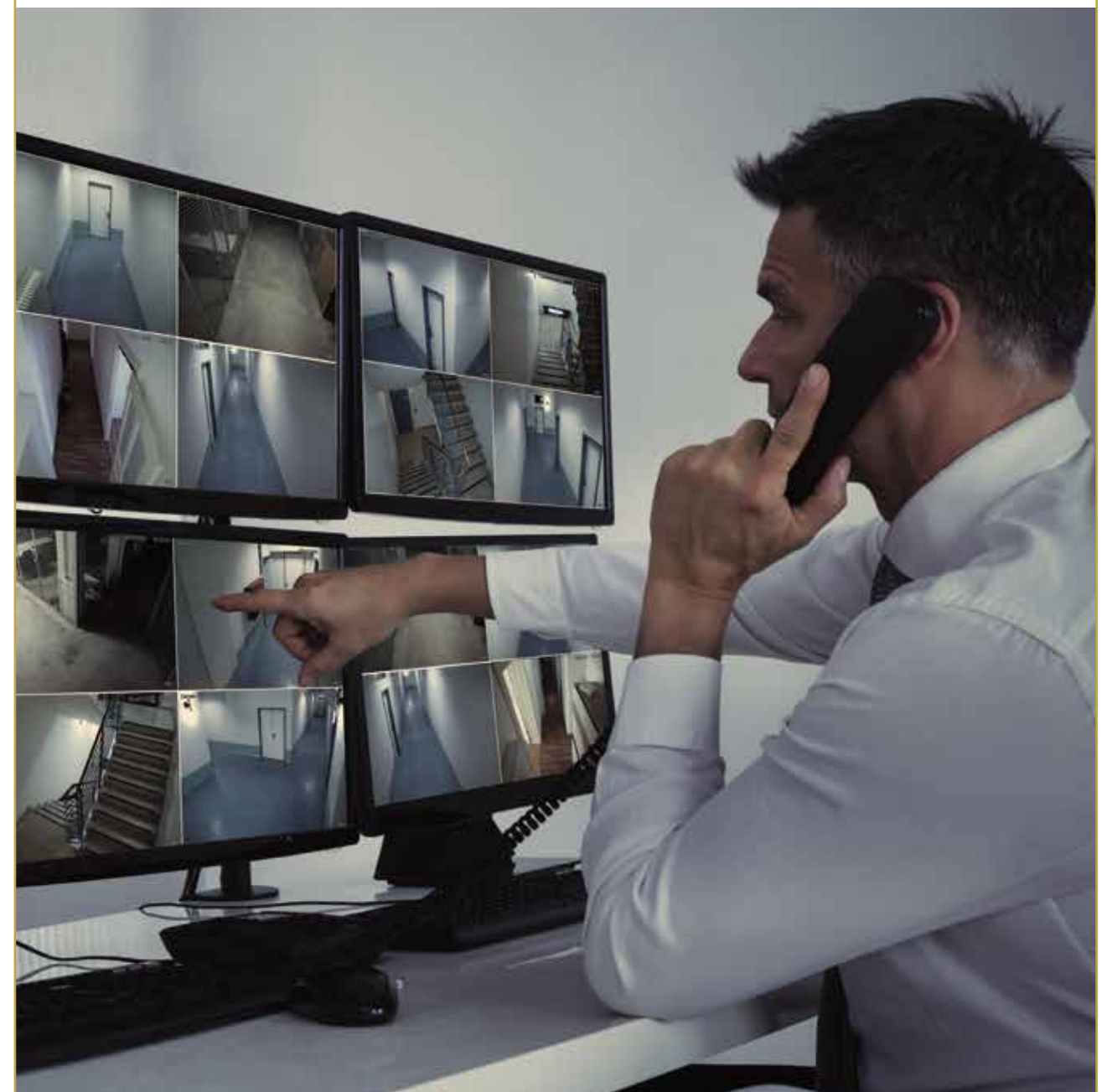


Noise Controlling FENESTA windows that  
capture uninterrupted views of nature

A WELL-SECURED  
CASTLE  
*for*  
THE LORDS OF LUXURY



Advanced Security with CCTV Surveillance,  
Security Alarm, Video Door Phone and More





# THE LEGACY OF LEADERSHIP & STRENGTH

— Moving Ahead with —

## EVERY DECADE



### 1980-1990

- MANI MANSIONS
- GUNJAN
- MANI TOWERS
- MANI VILLA
- QUEENS VILLA

### 1990-2000

- MANI KUNJ
- VISHAKA
- SIDDHARTH
- RANG TARANG
- DWARKA
- SHIVANGI
- MANI KANCHAN
- BRAJDHAM
- MANI DEEPA
- SIDDHAMANI
- UNI WORTH CENTRE
- THE MILLENNIUM
- MANI ANDAMAN

### 2000-2010

- MADHUBANI
- MANI AANGAN
- MANI VATIKA
- MANI PUSHPAK
- MANI UDAY
- NAYANMANI
- ASOKA
- MANISHA
- MANI KARN
- RUKMANI & PARASMANI
- MANI TECH
- SHIVAMANI
- MANIAM
- MANI BOUTIQUE
- MANI SQUARE
- MANI RATNAM
- NEERMANI
- PINK SQUARE (JAIPUR)

### 2010-2020

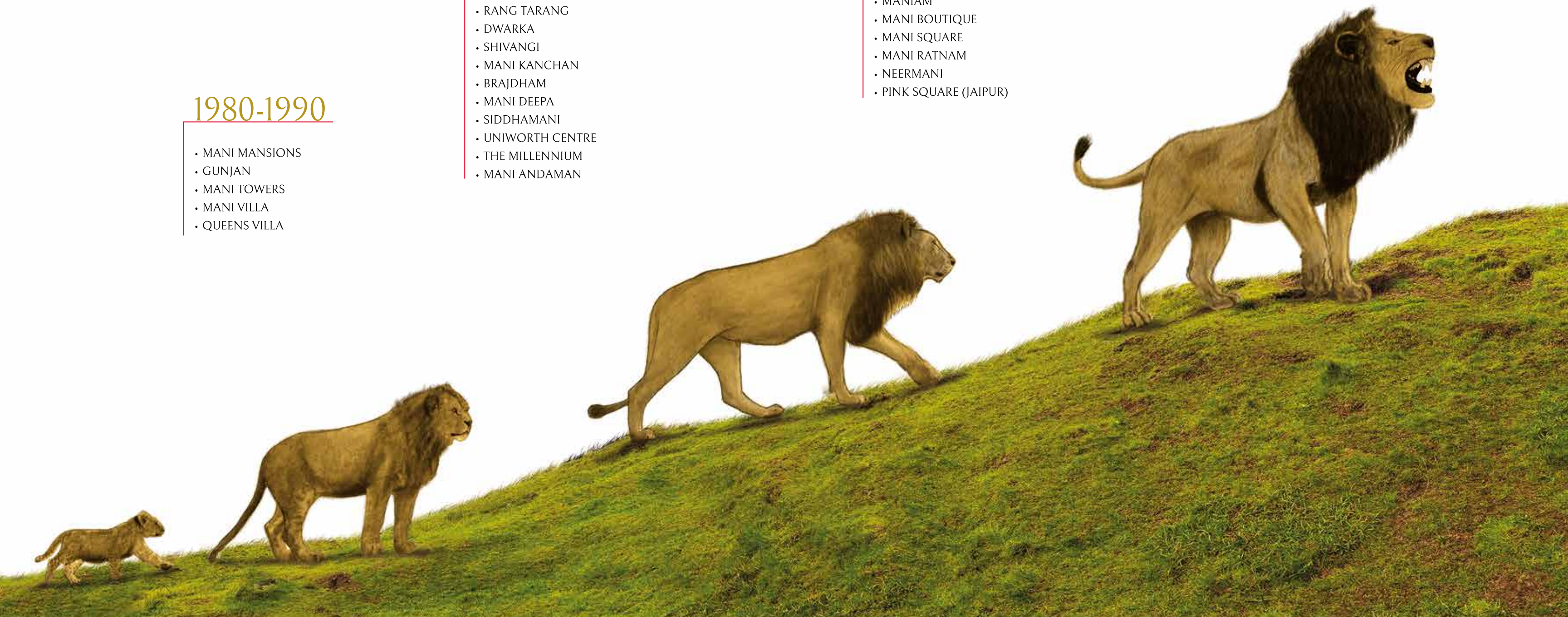
- SHIROMANI
- MANISRI
- TIRUMANI
- MANI KALA
- IQ CITY (PHASE I)
- SWARNAMANI (PHASE I)
- MANI TRIVUBAN. BHUBANESHWAR (PHASE I)
- MANI CASADONA
- VIVARA
- JW MARRIOTT (KOLKATA)
- COURTYARD BY MARRIOTT (SILIGURI)
- IQ CITY MEDICAL COLLEGE (DURGAPUR)
- IQ CITY NURSING COLLEGE (DURGAPUR)
- MANI RESIDENCY
- SHANKHMANI

### 2020 AND CONTINUING

- THE 42
- MANI CASA
- MEGH MANI

#### LOOK OUT FOR:

- MANI CREST
- MANI TRIBUVAN (PHASE II)
- MANI VISTA
- THE 42 ANNEXE
- MANI VISTA (PHASE II)
- SWARNAMANI (PHASE II)
- MANI CASA (PHASE II)
- SHREEMANI HAAT





## LAND OWNERS



### NORTEX GROUP A LEGACY OF TRUST & EXCELLENCE

Spearheaded by Mr Pavan Poddar, son of Late Shri Badri Prasad Poddar, the Nortex Group is part of the illustrious Poddar family, which has diversified interests in Real Estate, Healthcare and Plantations.

The Group has built several prominent office landmarks, including 'Poddar Court' in central Kolkata as well as 'Horizon' in Chowringhee. The Group has also built some residential projects in North Kolkata and has acquired land in different areas of the city to provide quality real-estate options in the future. Iris Hospital, (near Jadavpur) has also been promoted and is being run successfully by the Group.

The Poddar family has been an active member of FICCI until 1999, and two of its former Chairman have served as the President of FICCI.



### SHREE RSH GROUP BUILDING INSPIRING LIFESTYLES

Started in the year 2010 by Mr Hari Prasad Sharma, one of the most admired businessmen, Shree RSH is one of the fastest growing Groups in Kolkata. Its vision is to create spaces that inspire something more than just 'routine life.' With this in mind, the Group has successfully built some iconic buildings like 'Shree RSH Signature' (Golf Club road) a luxury residential tower overlooking the beautiful Royal Calcutta Golf Club and 'Basil Gardens' (Rowland Road), a boutique residential condominium, amongst others. It is also in the process of developing some more important landmarks in Rajarhat, Camac Street and Ballygunge. Besides real-estate, the Group has diversified interests in the production of recycled / regenerated Polyester Staple Fibre.

Now, Abasan Realty (jointly promoted by Nortex Group & Shree RSH Group) have joined hands with KMDA and Mani Group to deliver 'Anantmani', a world class residential project in the heart of Kolkata.





**Marketed By:**



**HAMLYN REALTY PVT. LTD**  
the property expert

Project Address:  
P 1/3 CIT Road, Scheme VII-M, Off Kankurgachi,  
Kolkata- 700054.

**+ 91 9073398299**

Disclaimer: This is not a legal tender. It is an information kit. It contains concept drawings which may undergo sanctionable changes at the discretion of the developer.