

TATHAST

— Sector 35 —

HARERA Registration No.- RC/REP/HARERA/GGM/764/496/2023/108 Date: 04.12.2023
HARERA Website- <https://haryanarera.gov.in>

TATHAST REALTY

More life? Granted.

10th Floor, Tower B, Vatika Tower, Sector 54, Gurugram
AN ISO 45001:2018 ; 9001:2015 ; 14001:2015 CERTIFIED COMPANY

Disclaimer: All designs and specifications are illustrative and subject to change. All images are graphic depiction and purely artistic in nature.



TATHAST 

— Sector 35 —

More life, granted.

Sector 35, South of Gurugram



Artistic Impression

Nestled in greenery, this residence offers you more time, wellness, space, tranquillity and happiness.

In other words, a home here grants you more life.

More time? Granted.

Superior connectivity to major retail hubs, schools, business centres and hospitals ensures convenience and more family time.

- Delhi Mumbai Industrial Corridor – 2 minutes

- IGI Airport – 30 minutes

- G.D. Goenka School – 2 minutes

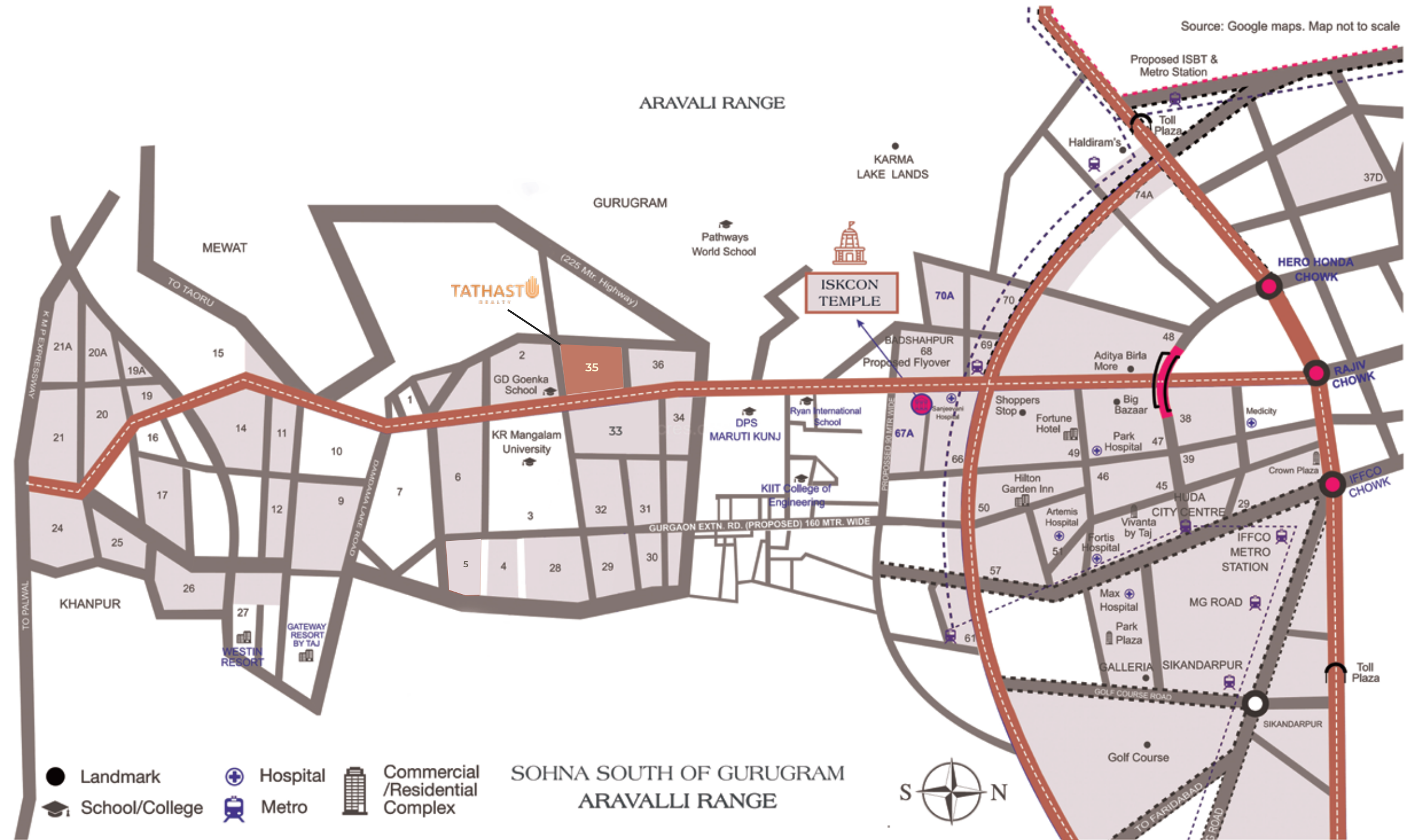
- K.R. Mangalam University – 2 minutes

- Medanta - The Medicity – 12 minutes

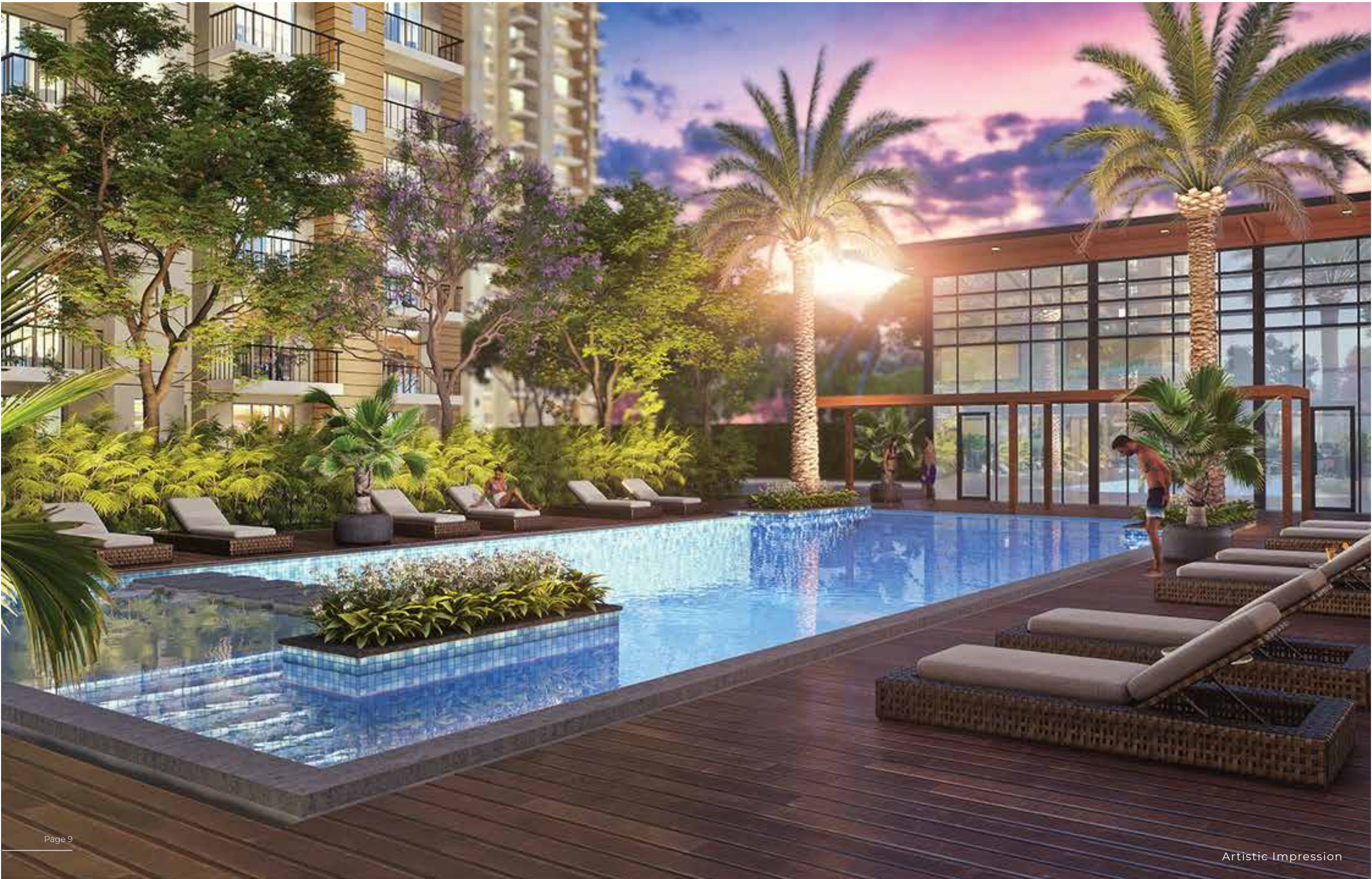
- Cyber Hub - 20 minutes

- Proposed Metro - 10 minutes

- Gurugram Railway Station - 20 minutes







More joy? Granted.

A 15,000+ sq. ft clubhouse awaits you here, with endless ways to pamper your senses and reinvigorate the spirit.

Swimming Pool

Spa

Minitheatre

Gym

More youth? Granted.

Your home offers an array of choices for you to live your healthiest life.

Open Gym

Badminton Court

Jogging Track

Wellness Arena

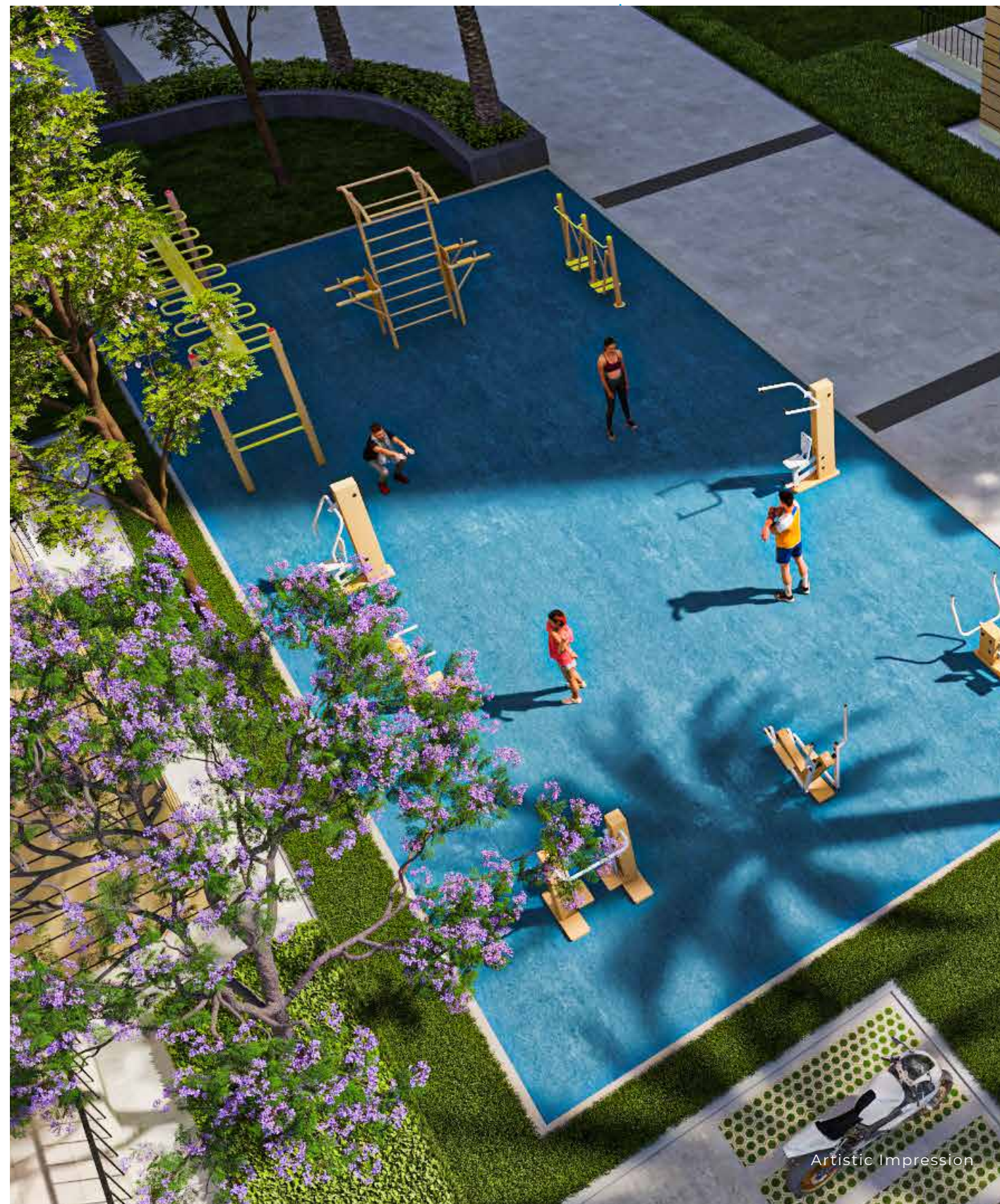
Elderly Park

Cycling Track

Cricket Pitch

Half Basketball Court

Tennis Court





More smiles? Granted.

Here, your little ones find new friends,
memories and ways to rejoice.

Skating Rink

Kids' Play Park

Waterbody

More wellness? Granted.

Your neighbourhood is one of serenity and verdure with cleaner air, 45% green/open area and natural spaces which soothe the senses, and the mind.

Yoga Lawn

Winter Lawn

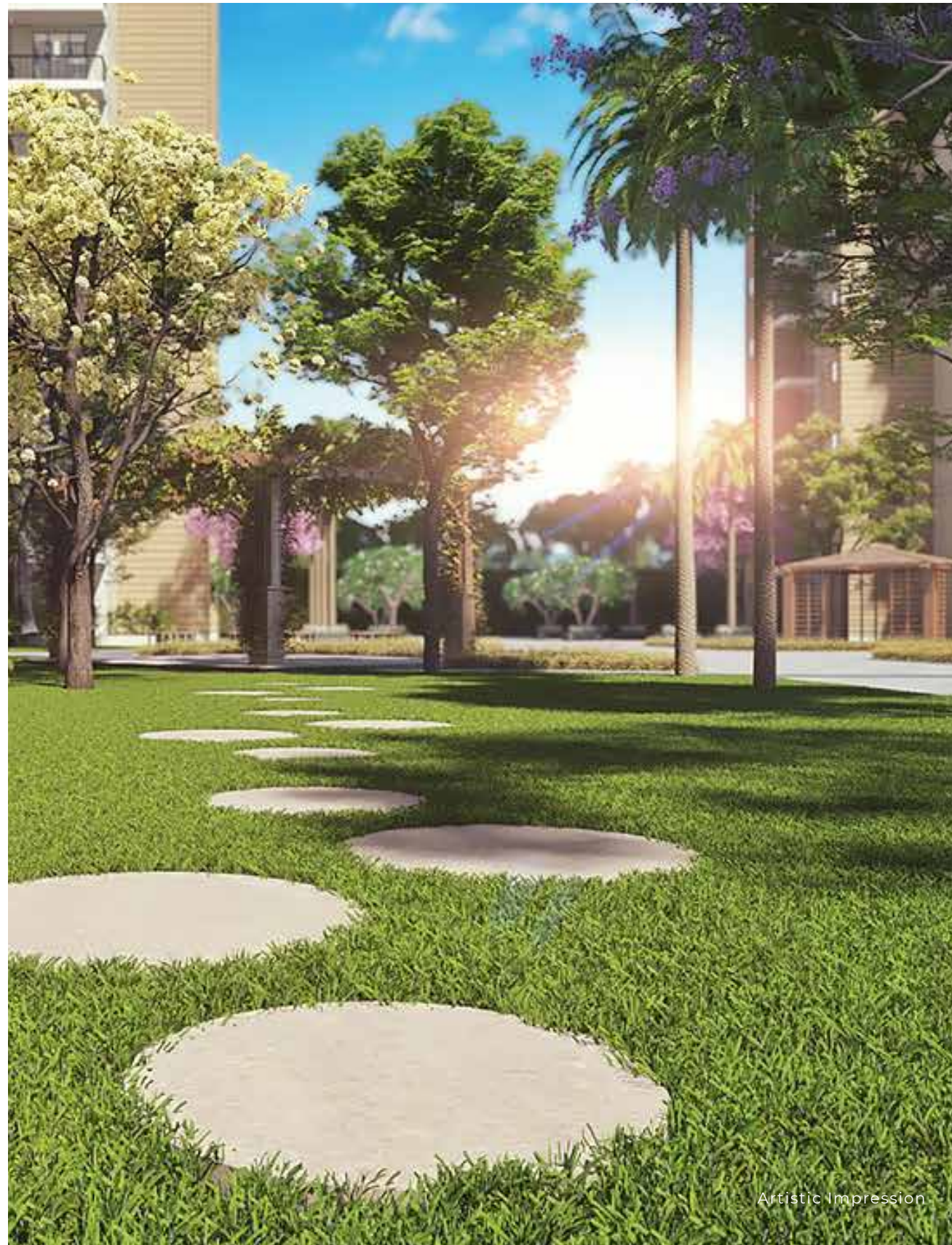
Fragrance Garden

Party Lawn

Outdoor Pavilion

Pergola

Stepping Stones



Artistic Impression



Artistic Impression



Artistic Impression



Artistic Impression



Artistic Impression



Artistic Impression

More comfort? Granted.

The architecture of Tathastu exudes richness in design and function. Every detail tells you that this is the abode you deserve.

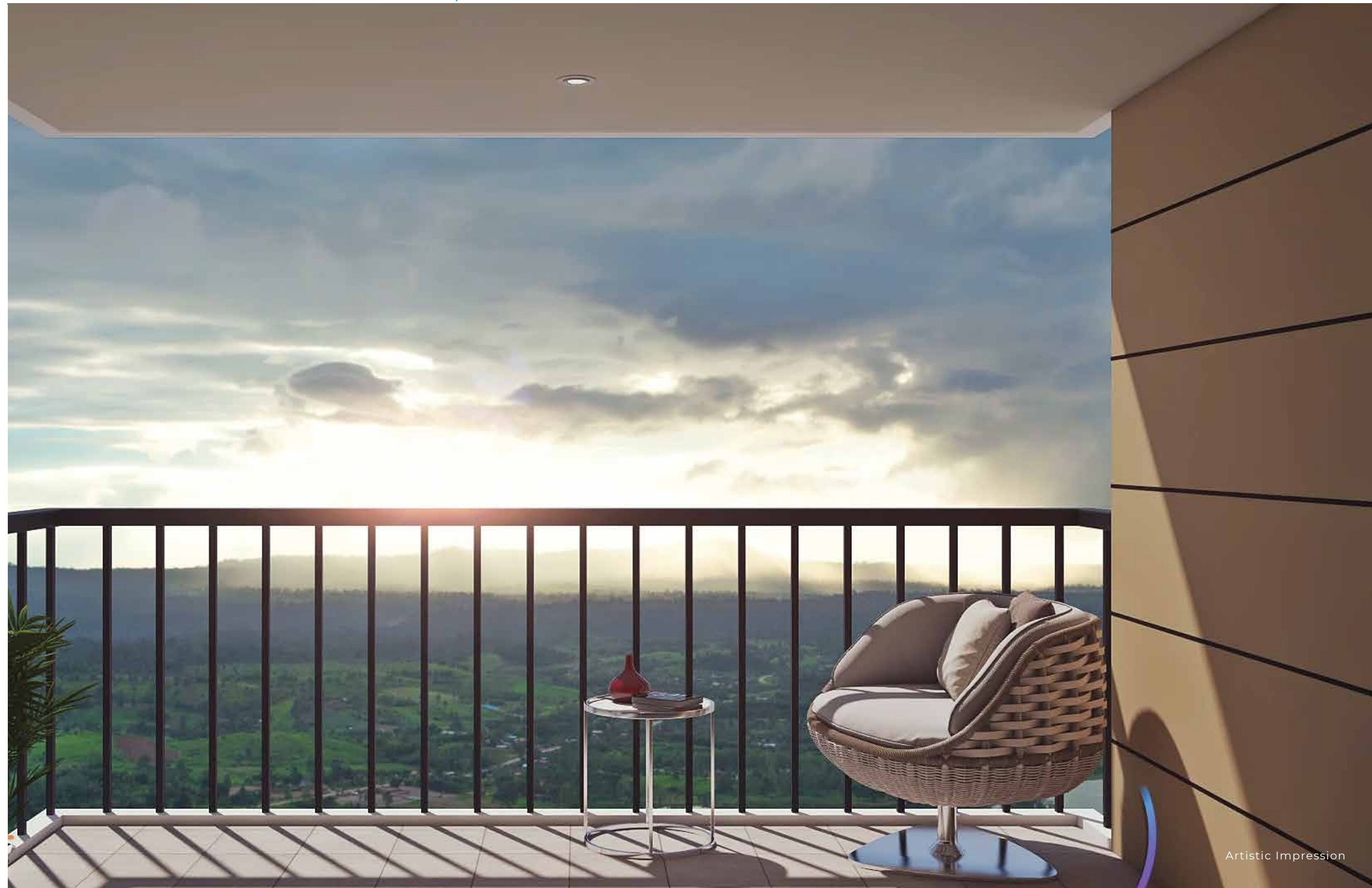
Two-wheeler Parking

Four-wheeler Parking

Double Heighted Entrance Lobby

More room? Granted.

The expansive layouts at Tathastu deliver more space for dreams, aspirations and life.



24m Wide Road



12m Wide Service Road

60m wide Road

Master Plan

LEGEND

- 1.ENTRY GATE
- 2.GUARD ROOM
- 3.DRIVEWAY
- 4.PARKING
- 5.PARKING
- 6.PATHWAY
- 7.DROP-OFF
- 8.ELDERLY PARK
- 9.KID'S PALY AREA
- 10.SKATING RING
- 11.MULTIPURPOSE LAWN
- 12.TOT-LOT
- 13.PET PARK
- 14.SEATING WITH SCULPTURE
- 15.YOGA LAWN
- 16.BADMINTON COURT
- 17.FRAGRANCE GARDEN
- 18.CRICKET PITCH
- 19.PERGOLA
- 20.WATER BODY
- 21.FEATURE WALL
- 22.OPEN -AIR THEATRE
- 23.ZEN GARDEN
- 24.FIRE TENDER PATH
- 25.OUTDOOR FITNESS
- 26.HALF BASKETBALL COURT
- 27.PLANTER CUM SEATING
- 28.SEATING PLAZA
- 29.OPEN -AIR THEATRE SEATING
- 30.MOUND
- 31.PAVILION
- 32.DRY WATERBODY FOR KIDS
- 33.JOGGING TRACK
- 34.FRUIT ORCHARD
- 35.SWIMMING POOL

UNIT 2A (2BHK+STORE) - TYPICAL FLOOR UNIT

CARPET AREA : 59.99 SQ.M. (645.73 SQ.FT)

BALCONY : 8.11 SQ.M.(87.30 SQ.FT.)



Not to scale

UNIT 2B (2BHK+STORE) - TYPICAL FLOOR UNIT

CARPET AREA : 59.99 SQ.M. (645.73 SQ.FT)

BALCONY : 9.93 SQ.M.(106.89 SQ.FT)



Not to scale

UNIT 2C (2BHK+STORE) - TYPICAL FLOOR UNIT

CARPET AREA : 59.99 SQ.M. (645.73 SQ.FT)

BALCONY : 5.85 SQ.M.(62.97 SQ.FT.)



Not to scale



The Partners



Founding member of Indian Green Building Council that works with Government and Private authorities to enable sustainable real estate development across the country.



A distinguished member of BRICS Chamber of Commerce & Industry, aiming to bolster trade and commerce among the BRICS nations.



Partnering with ASSOCHAM for spearheading all-inclusive growth and strengthening India's mettle in global economic forums.



A Patron membership holder at NAREDCO aiming at developing real estate industry with unscrupulous operations.



Advisory for innovative and insightful learnings to take our retail space development beyond its existing limits.