



Registered Under  
Make in India Campaign 2016



www.empirecentrum.com



# HOME IS WHERE YOUR STORY BEGINS

**CALL: +91 907 101 5800**

**Empire Industrial Centrum (A Division of Empire Industries Ltd.)**

**Site Address:** Empire Industrial Centrum (A Division of Empire Industries Ltd.),  
Plot 22, Ambernath Industrial Area, MIDC, Village Chickloli, Ambernath West – 421505, Dist. Thane

**Registered Address:** Empire Complex, 414, Senapati Bapat Marg,  
Lower Parel, Mumbai - 400 013, Maharashtra, India.

[www.empirecentrum.com](http://www.empirecentrum.com)

MAHA RERA registration number P5170006096, P51700021315, P51700025202, P51700025192

## FLOOR PLAN BOOK

**Disclaimer:** Empire Industrial Centrum Project is being developed in phase wise manner. Customers are requested to consult the Site Office for details and update themselves with all the necessary details in respect of the project from time to time. All dimensions mentioned / seen in the drawings / show flat within site office may vary / differ due to construction contingencies, construction variances and site conditions. The customers are requested to apprise themselves with the relevant information pertaining to the residential flat / industrial unit of his interest prior to making any purchase decision. Customers are therefore required to verify all the details, including area, amenities, services, terms of allotment and payments and other relevant terms independently with our team/ company prior to concluding any decision of availing any allotment of any unit(s) in the "Empire Industrial Centrum Project" Project. In any event, we shall not be liable for any expense, claim, loss or damage of whatsoever nature, caused due to reliance placed upon the depiction made in this sample flat/brochure. The images & other details give above are only indicative. Developer reserves right to change any or all of these in the interest of development. Any purchases/leases of this development shall be governed by the terms & conditions of the agreement for sale/lease entered in to between parties. # all the rooftop amenities, ground amenities, landscape reserve for jogging & cycling track, skating rink & sit-out area & commercial spaces are future development. Please refer conformity related to development phases, etc., with MAHA RERA registration number Phase I - P5170006096, Phase II - P51700021315, Phase III - P51700025202, Phase IV - P51700025192

**EMPIRE**  
INDUSTRIAL CENTRUM  
AMBERNATH

**KUCH  
KHAAS  
HAI**





## OPEN GROUND AMENITIES:

1. ENTRANCE GATE WITH SECURITY CABIN
2. OPEN GYM
3. NET CRICKET PITCH
4. BASKETBALL COURT
5. MULTIPURPOSE COURT
6. CHILDREN'S PLAY AREA
7. BADMINTON COURT
8. TEMPLE
9. WATER FOUNTAIN
10. YOGA AND MEDITATION SPACE
11. KABADDI COURT
12. JOGGING TRACK
13. SIT OUT AREA
14. PARTY LAWN
15. AMPHITHEATRE
16. SENIOR CITIZEN'S CORNER
17. BEAUTIFUL LANDSCAPING
18. MORE THAN 100 TREES WITHIN THE CAMPUS

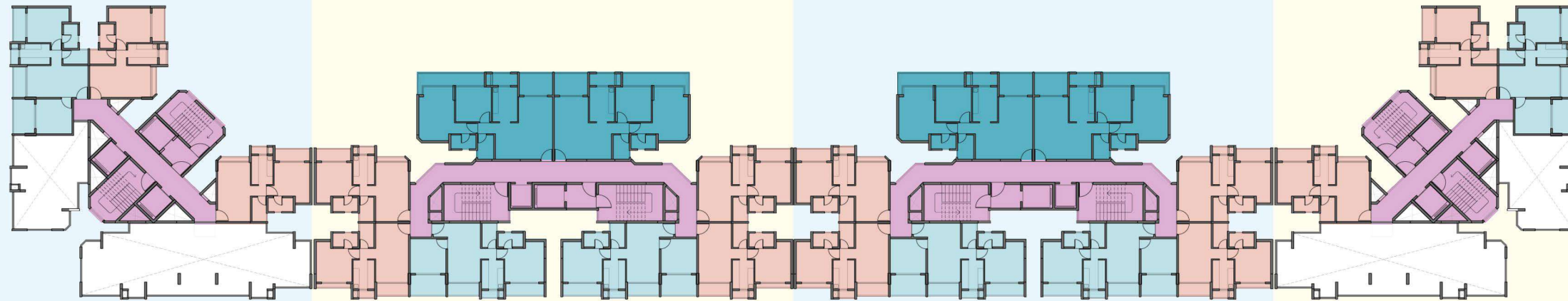


A WING

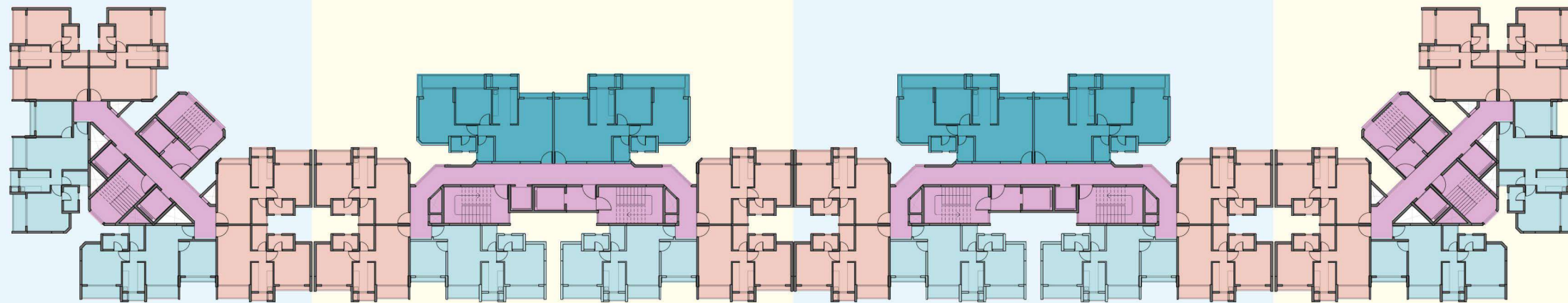
B WING

C WING

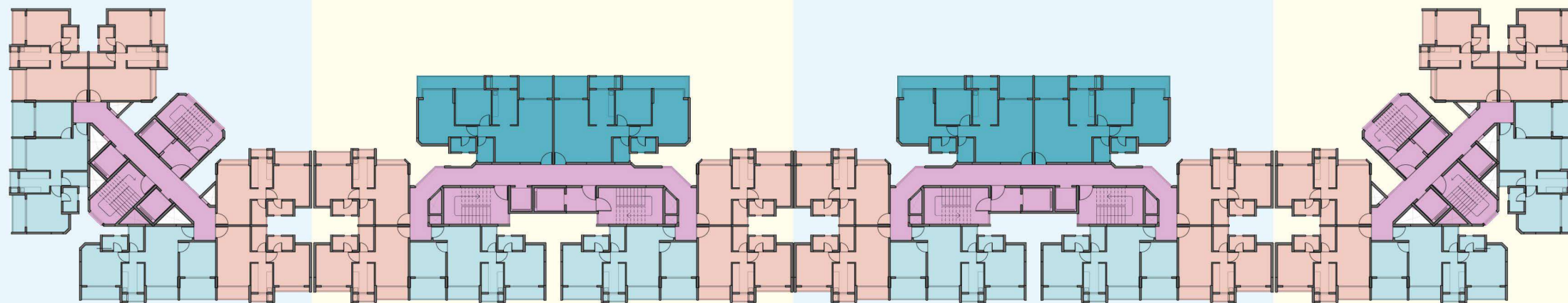
D WING



1ST FLOOR LAYOUT.



2ND, 4TH, 6TH, 8TH, 10TH & 12TH TYPICAL FLOOR PLAN.



3RD, 5TH, 7TH, 9TH & 11TH TYPICAL FLOOR PLAN.

## UNIT / FLAT TOPOLOGY:

1 BHK Type A, B & C

2 BHK Type A

2 BHK Type B

## DESIGN FEATURES:

- WING WISE PICK UP AND DROP OFF POINT.
- NATURAL LIGHT AND VENTILATION FOR EACH FLAT.
- FULL HEIGHT (FRENCH WINDOW) FOR EACH ROOM WITH M.S. RAILING.
- PRIVACY FOR EACH ROOM AND FLAT.
- BUILDING IS COMPLIANCE WITH FIRE NORMS.
- EACH TOWER HAVING TWO STAIRCASE WITH FIRE TOWER.
- STAIRCASE AND FIRE TOWER HAVING FIRE RESISTANT DOOR.
- FLIGHT WIDTH OF EACH STAIRCASE IS 1.5 M.
- TWO LIFT FOR EACH WING (ONE REGULAR AND ONE STRETCHER LIFT).
- SEPARATE TWO LIFT FOR TERRACE AMENITY AREA.
- WIDE PASSAGES / CORRIDORS (1.8 M WIDE PASSAGE).
- ENERGY SAVING BUILDING.
- DRY BALCONY FOR KITCHEN.
- SECURITY AND SAFETY (CCTV CAMERAS, GATED COMMUNITY).
- VASTU COMPLIANCE DESIGN.
- SITE CIRCULATION.
- 24 HOUR BACKUP ELECTRICITY.
- EARTHQUAKE RESISTANT BUILDING.

WING C & D ARE IN FUTURE DEVELOPMENT



WING A

ENTRANCE LOBBY



WING A

1ST FLOOR PLAN

Room Nos.	Room	TYPE
2	2 BHK	Type A3
3 & 4	1 BHK	Type B

2 BHK  
Type A3

1 BHK  
Type B

1 BHK  
Type B



WING A

EVEN FLOOR  
2ND, 4TH, 6TH, 8TH, 10TH & 12TH TYPICAL PLAN

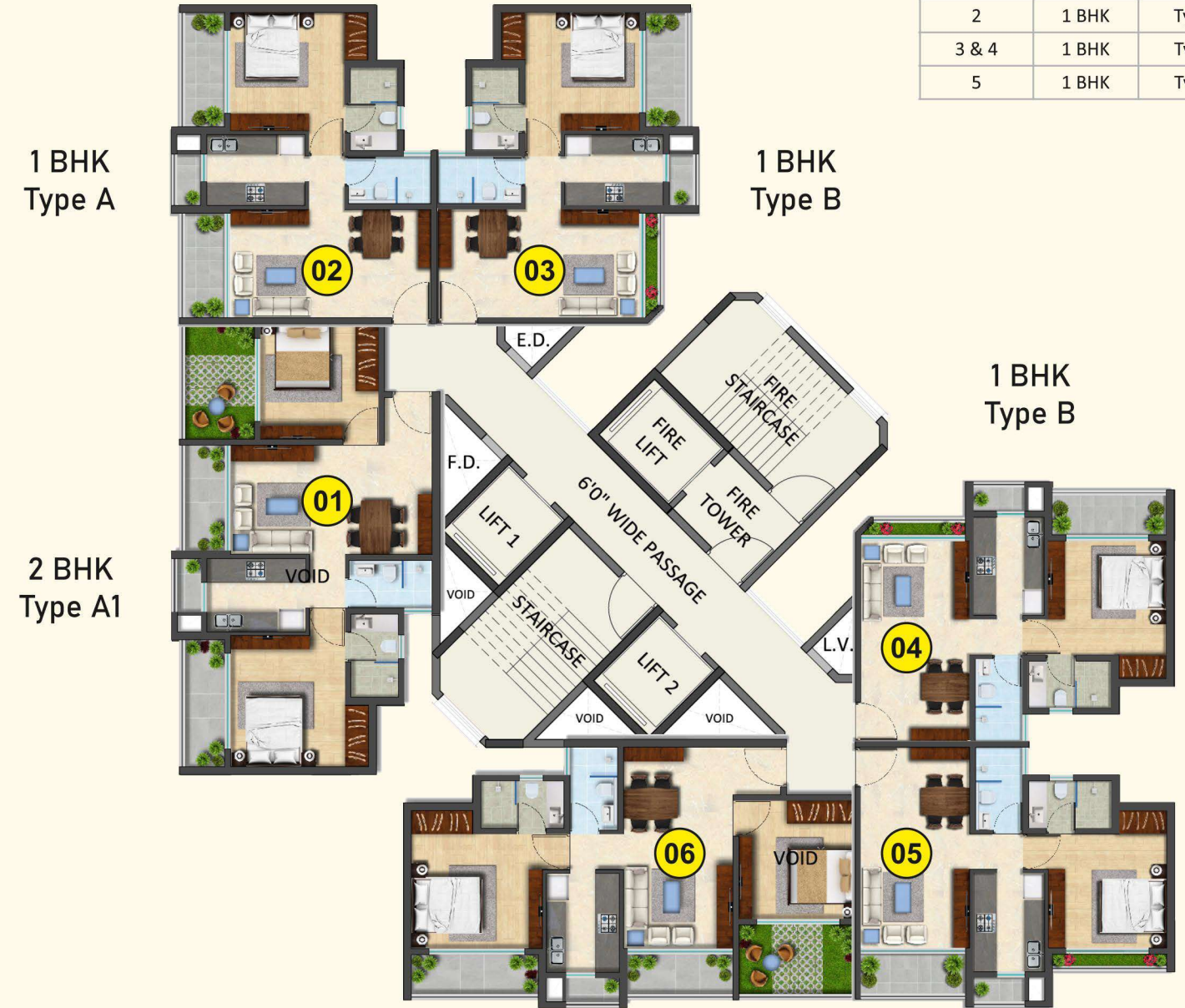
Room Nos.	Room	TYPE
1 & 6	2 BHK	Type A2
2	1 BHK	Type A
3 & 4	1 BHK	Type B
5	1 BHK	Type C



WING A

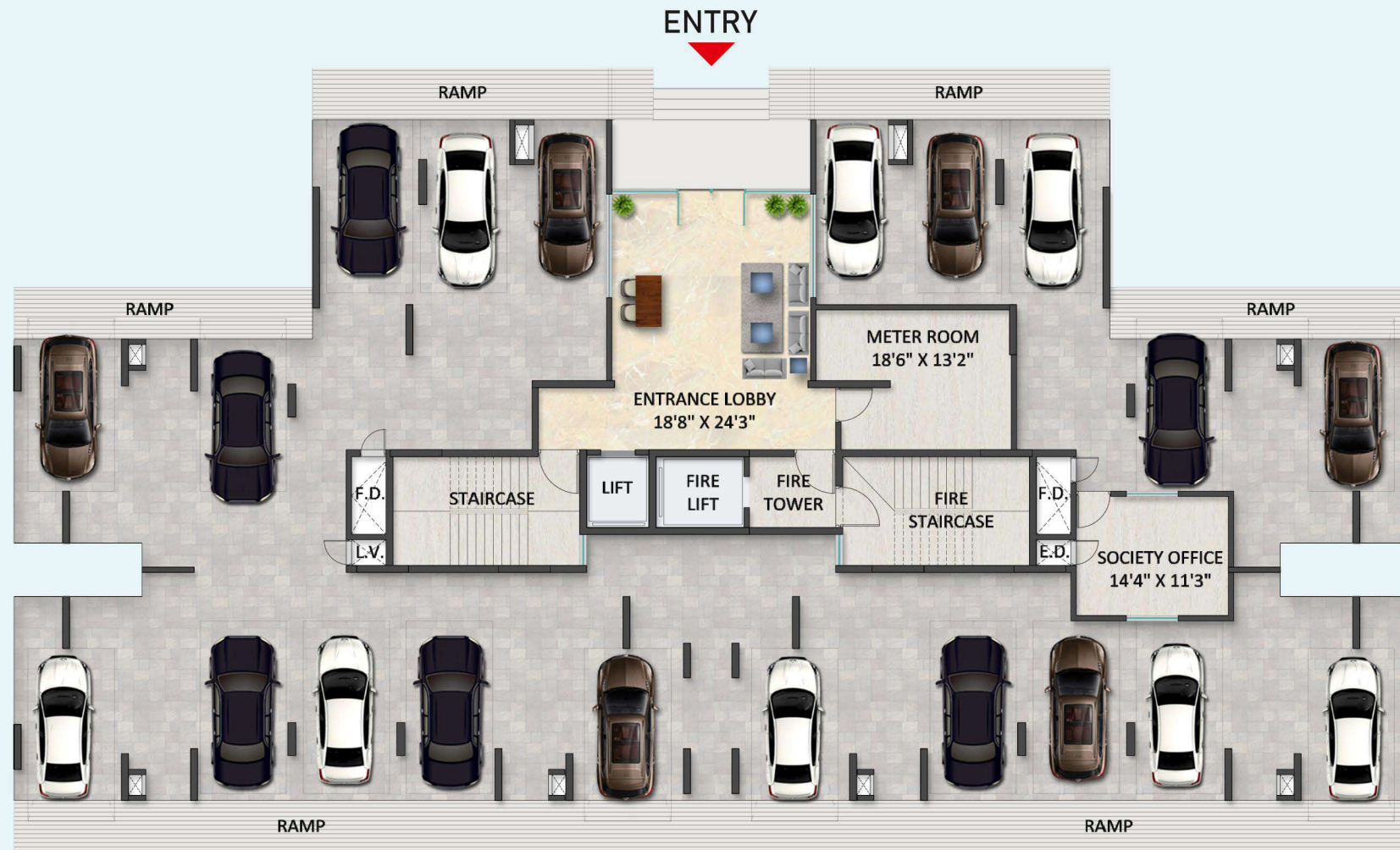
ODD FLOOR  
3RD, 5TH, 7TH, 9TH & 11TH TYPICAL PLAN

Room Nos.	Room	TYPE
1 & 6	2 BHK	Type A1
2	1 BHK	Type A
3 & 4	1 BHK	Type B
5	1 BHK	Type C



WING B

ENTRANCE LOBBY



WING B

ODD FLOOR  
1ST, 3RD, 5TH, 7TH, 9TH & 11TH TYPICAL PLAN

Room Nos.	Room	TYPE
1 & 2	2 BHK	Type B1
3 & 8	1 BHK	Type B
4 & 7	1 BHK	Type C
5 & 6	2 BHK	Type A1





WING B

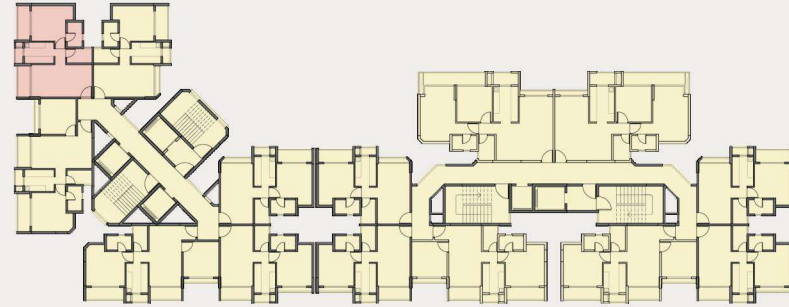
EVEN FLOOR  
2ND, 4TH, 6TH, 8TH, 10TH & 12TH TYPICAL PLAN

Room Nos.	Room	TYPE
1 & 2	2 BHK	Type B2
3 & 8	1 BHK	Type B
4 & 7	1 BHK	Type C
5 & 6	2 BHK	Type A2



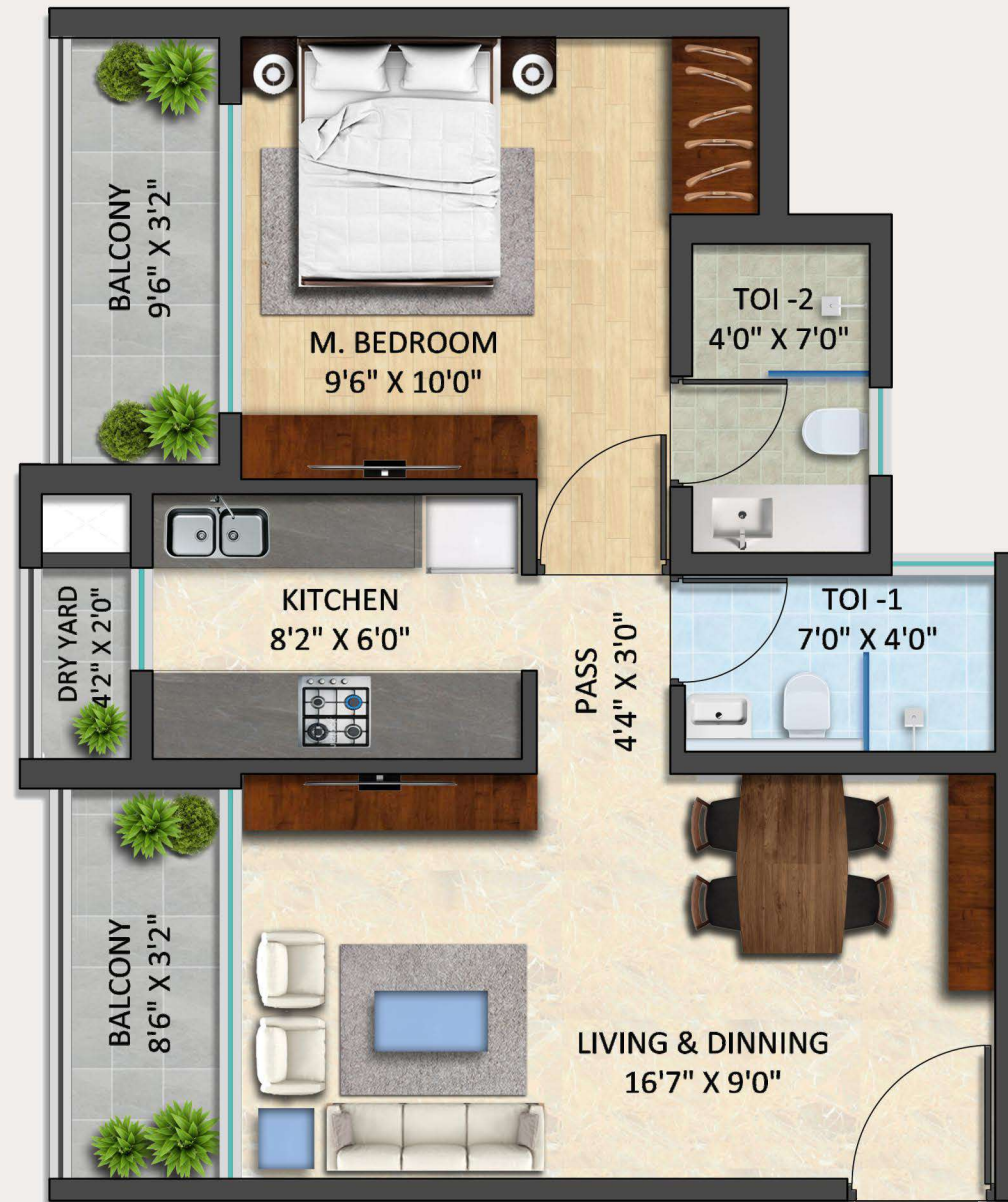
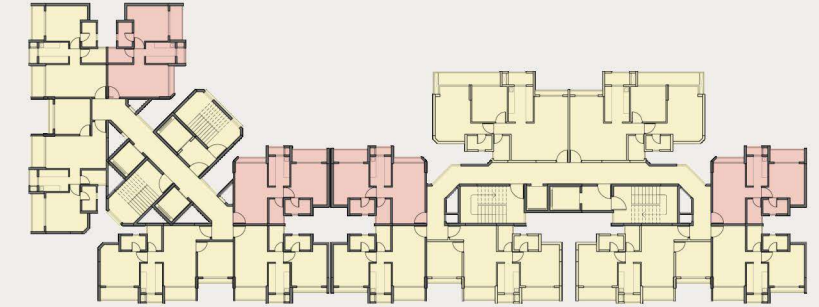
1 BHK A	SQ. M	SQ. FT
RERA CARPET AREA	36.60	393.96
BUILT UP AREA	41.97	451.77
INTERNAL CARPET AREA	35.19	378.75
FLOWER BED AREA	--	--
DRY YARD AREA	0.97	10.44
BALCONY AREA	6.38	68.67
TERRACE AREA	--	--
USABLE AREA	<b>42.54</b>	<b>457.87</b>

### 1 BHK (TYPE A)



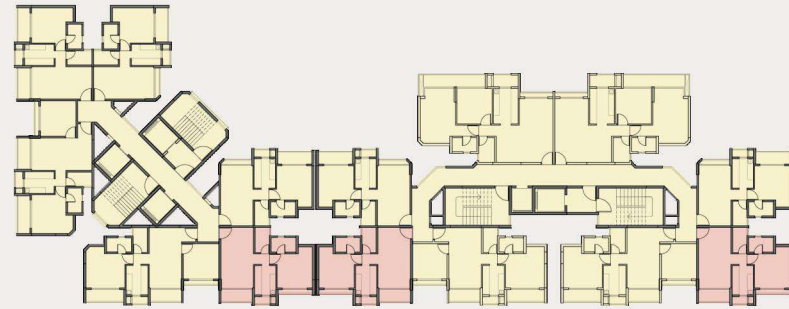
1 BHK A	SQ. M	SQ. FT
RERA CARPET AREA	36.60	393.96
BUILT UP AREA	41.68	448.64
INTERNAL CARPET AREA	35.19	378.75
FLOWER BED AREA	1.10	11.84
DRY YARD AREA	0.97	10.44
BALCONY AREA	3.33	35.84
TERRACE AREA	--	--
USABLE AREA	<b>40.59</b>	<b>436.88</b>

### 1 BHK (TYPE B)



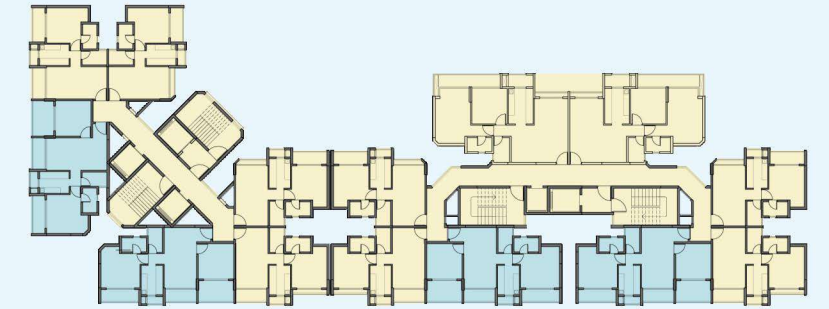
1 BHK A	SQ. M	SQ. FT
RERA CARPET AREA	36.60	393.96
BUILT UP AREA	41.63	448.11
INTERNAL CARPET AREA	35.19	378.75
FLOWER BED AREA	1.30	13.99
DRY YARD AREA	0.97	10.44
BALCONY AREA	3.04	32.72
TERRACE AREA	--	--
USABLE AREA	<b>40.50</b>	<b>435.91</b>

1 BHK (TYPE C)



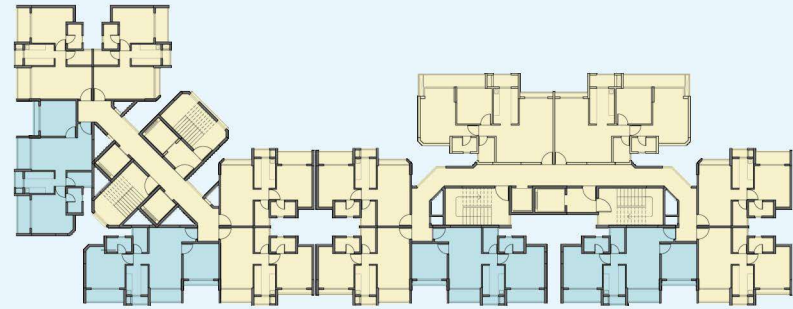
1 BHK A	SQ. M	SQ. FT
RERA CARPET AREA	48.93	526.65
BUILT UP AREA	55.73	599.88
INTERNAL CARPET AREA	47.01	506.02
FLOWER BED AREA	--	--
DRY YARD AREA	1.01	10.87
BALCONY AREA	6.73	72.41
TERRACE AREA	5.70	61.35
USABLE AREA	<b>60.45</b>	<b>650.65</b>

2 BHK (TYPE A1)



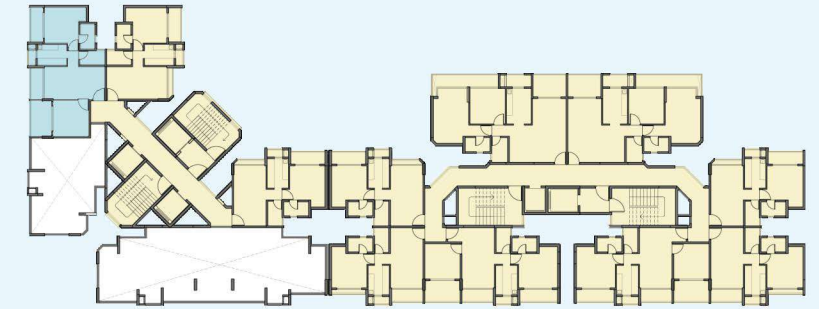
1 BHK A	SQ. M	SQ. FT
RERA CARPET AREA	48.93	526.65
BUILT UP AREA	55.51	597.51
INTERNAL CARPET AREA	47.01	506.02
FLOWER BED AREA	1.35	14.53
DRY YARD AREA	1.01	10.87
BALCONY AREA	6.72	72.33
TERRACE AREA	--	--
USABLE AREA	<b>56.09</b>	<b>603.75</b>

### 2 BHK (TYPE A2)



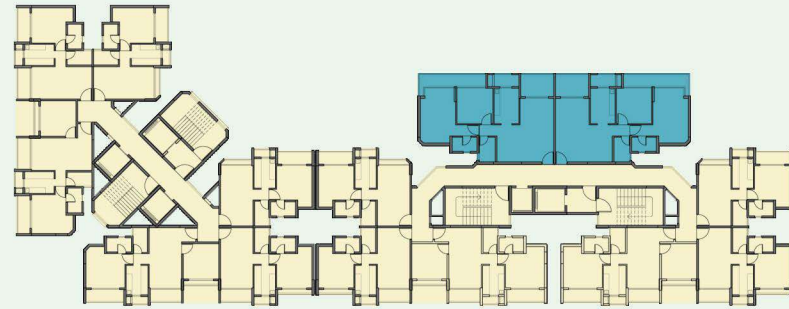
1 BHK A	SQ. M	SQ. FT
RERA CARPET AREA	46.05	495.68
BUILT UP AREA	52.45	564.57
INTERNAL CARPET AREA	44.32	477.06
FLOWER BED AREA	--	--
DRY YARD AREA	0.97	10.44
BALCONY AREA	6.38	68.67
TERRACE AREA	5.70	61.35
USABLE AREA	<b>57.37</b>	<b>617.53</b>

### 2 BHK (TYPE A3)



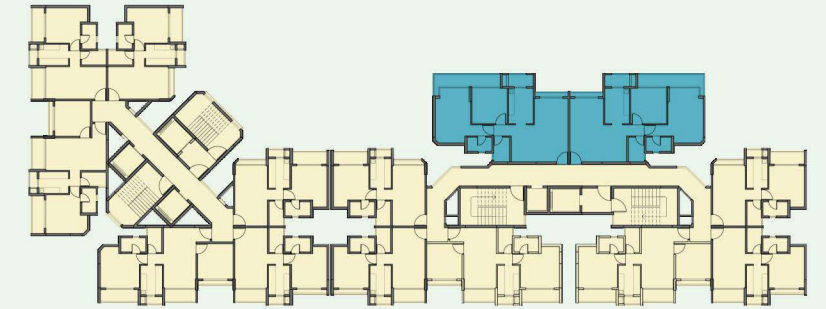
1 BHK A	SQ. M	SQ. FT
RERA CARPET AREA	61.28	659.62
BUILT UP AREA	67.99	731.83
INTERNAL CARPET AREA	59.26	637.87
FLOWER BED AREA	0.88	9.44
DRY YARD AREA	2.41	25.94
BALCONY AREA	6.04	64.98
TERRACE AREA	5.60	60.28
USABLE AREA	<b>74.18</b>	<b>798.52</b>

2 BHK (TYPE B1)



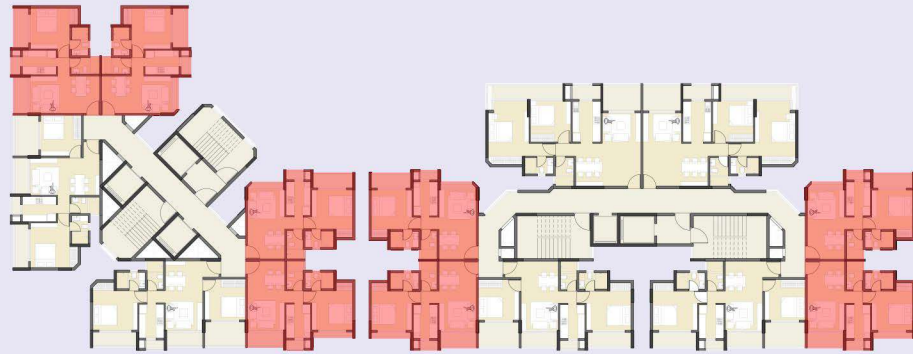
1 BHK A	SQ. M	SQ. FT
RERA CARPET AREA	61.28	659.62
BUILT UP AREA	67.99	731.83
INTERNAL CARPET AREA	59.26	637.87
FLOWER BED AREA	2.14	23.03
DRY YARD AREA	2.41	25.94
BALCONY AREA	6.04	64.98
TERRACE AREA	--	--
USABLE AREA	<b>69.85</b>	<b>751.83</b>

2 BHK (TYPE B2)

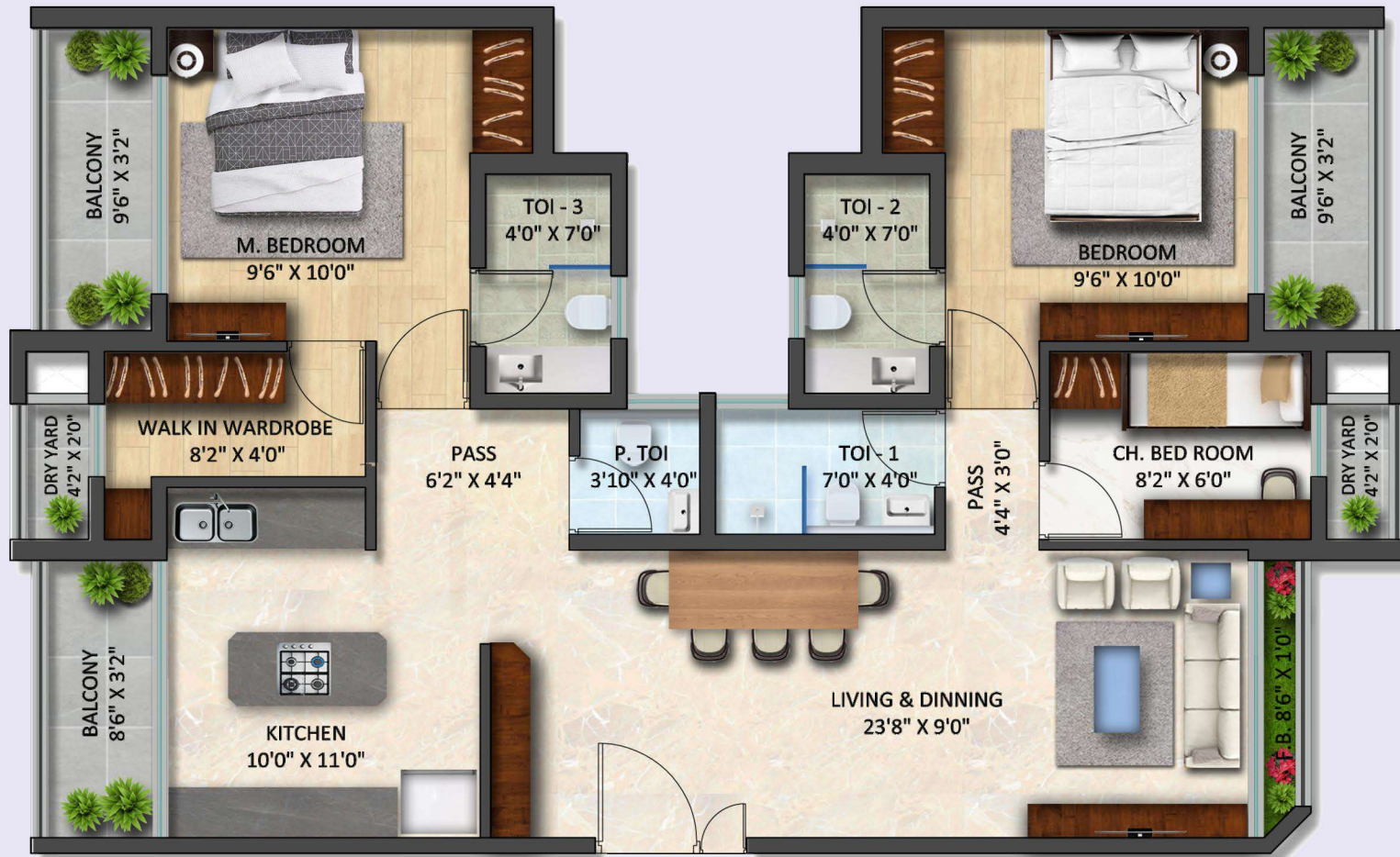
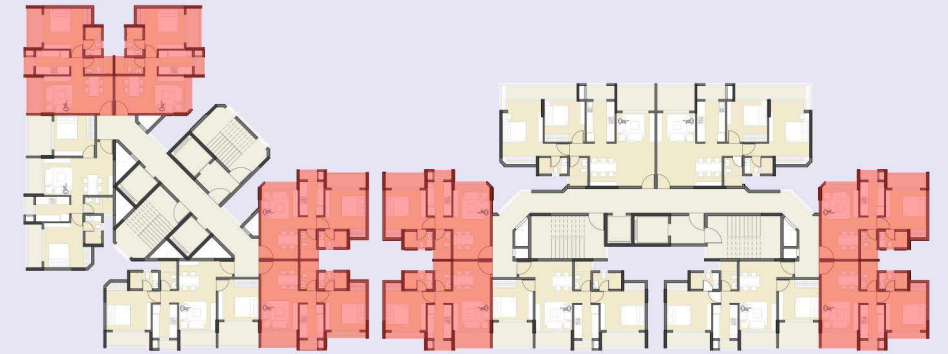




1 BHK A	SQ. M	SQ. FT
RERA CARPET AREA	73.74	793.74
BUILT UP AREA	82.79	891.15
INTERNAL CARPET AREA	70.59	759.83
FLOWER BED AREA	1.10	11.84
DRY YARD AREA	1.95	20.99
BALCONY AREA	9.71	104.52
TERRACE AREA	--	--
USABLE AREA	<b>83.35</b>	<b>897.18</b>



1 BHK A	SQ. M	SQ. FT
RERA CARPET AREA	73.74	793.74
BUILT UP AREA	82.79	891.15
INTERNAL CARPET AREA	70.57	759.62
FLOWER BED AREA	1.10	11.84
DRY YARD AREA	1.95	20.99
BALCONY AREA	9.71	104.52
TERRACE AREA	--	--
USABLE AREA	<b>83.33</b>	<b>896.96</b>



JODI OF TWO 1 BHK  
LUXURIOUS FLAT



JODI OF TWO 1 BHK  
MAXIMUM SPACE UTILIZATION

1 BHK A	SQ. M	SQ. FT
RERA CARPET AREA	88.51	952.72
BUILT UP AREA	98.73	1,062.73
INTERNAL CARPET AREA	85.19	916.99
FLOWER BED AREA	1.30	13.99
DRY YARD AREA	1.98	21.31
BALCONY AREA	9.77	105.16
TERRACE AREA	5.70	61.35
USABLE AREA	<b>103.94</b>	<b>1,118.81</b>

JODI OF 1 BHK & 2 BHK A: LUXURIOUS FLAT





1 BHK A	SQ. M	SQ. FT
RERA CARPET AREA	88.51	952.72
BUILT UP AREA	98.73	1,062.73
INTERNAL CARPET AREA	85.13	916.34
FLOWER BED AREA	1.30	13.99
DRY YARD AREA	1.98	21.31
BALCONY AREA	9.77	105.16
TERRACE AREA	5.70	61.35
USABLE AREA	<b>103.88</b>	<b>1,118.16</b>

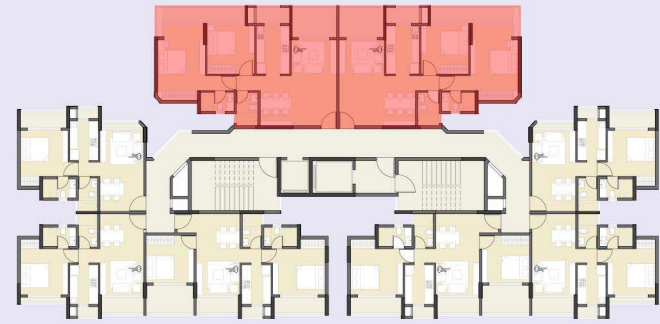


JODI OF 1 BHK & 2 BHK A: MAXIMUM SPACE UTILIZATION

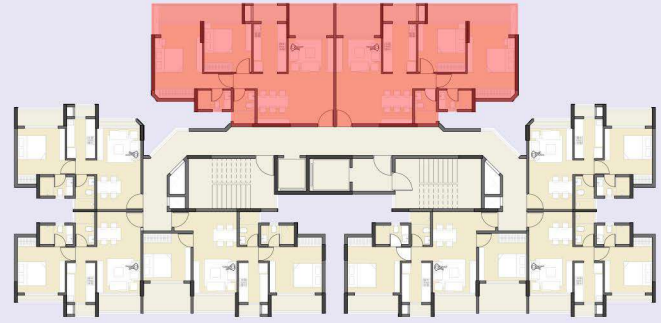


JODI OF 2 BHK B: LUXURIOUS FLAT

1 BHK A	SQ. M	SQ. FT
RERA CARPET AREA	123.27	1,326.88
BUILT UP AREA	134.52	1,447.97
INTERNAL CARPET AREA	118.93	1,280.16
FLOWER BED AREA	-	-
DRY YARD AREA	4.83	51.99
BALCONY AREA	12.07	129.92
TERRACE AREA	11.50	123.79
USABLE AREA	<b>147.33</b>	<b>1,585.86</b>



1 BHK A	SQ. M	SQ. FT
RERA CARPET AREA	123.27	1,326.88
BUILT UP AREA	134.52	1,447.97
INTERNAL CARPET AREA	118.94	1,280.27
FLOWER BED AREA	-	-
DRY YARD AREA	4.83	51.99
BALCONY AREA	12.07	129.92
TERRACE AREA	11.50	123.79
USABLE AREA	<b>147.34</b>	<b>1,585.97</b>

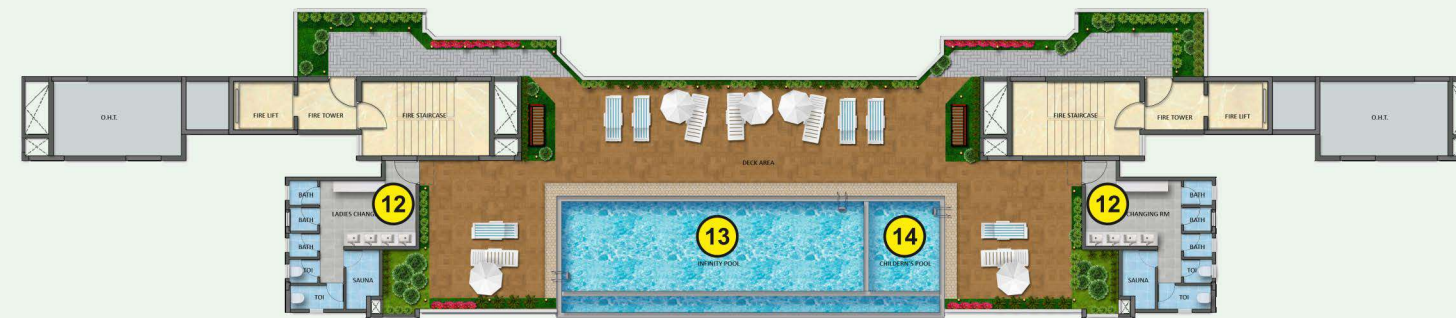


JODI OF 2 BHK B: MAXIMUM SPACE UTILIZATION





TERRACE FLOOR



DECK FLOOR

## ROOF TOP AMENITIES:

- 01. SIT OUT / INFORMAL SEATING
- 02. WATER FOUNTAIN
- 03. YOGA AND MEDITATION ROOM
- 04. LIBRARY
- 05. GAMING ZONE

- 06. BUSINESS CENTRE AND MULTIPURPOSE HALL
- 07. GYMNASIUM
- 08. MEDIA LOUNGE
- 09. VIEWING GALLERY
- 10. SUNSET LOUNGE

- 11. BEAUTIFUL LANDSCAPING
- 12. LADIES AND GENTS CHANGING ROOMS
- 13. INFINITY SWIMMING POOL
- 14. CHILDREN'S POOL
- 15. DECK AREA

- 16. STEPPED GARDEN
- 17. MULTIPURPOSE LAWN
- 18. JOGGING TRACK
- 19. GAZEBO

**A Wing - Madurai**

Unit No.	Type	Unit No.	Type	Unit No.	Type	Unit No.	Type
<b>1st Floor</b>		<b>2nd Floor</b>		<b>3rd Floor</b>		<b>4th Floor</b>	
101	-	201	2 BHK A2	301	2 BHK A1	401	2 BHK A2
102	2 BHK A3	202	1 BHK A	302	1 BHK A	402	1 BHK A
103	1 BHK B	203	1 BHK B	303	1 BHK B	403	1 BHK B
104	1 BHK B	204	1 BHK B	304	1 BHK B	404	1 BHK B
105	-	205	1 BHK C	305	1 BHK C	405	1 BHK C
106	-	206	2 BHK A2	306	2 BHK A1	406	2 BHK A2
<b>5th Floor</b>		<b>6th Floor</b>		<b>7th Floor</b>		<b>8th Floor</b>	
501	2 BHK A1	601	2 BHK A2	701	2 BHK A1	801	2 BHK A2
502	1 BHK A	602	1 BHK A	702	1 BHK A	802	1 BHK A
503	1 BHK B	603	1 BHK B	703	1 BHK B	803	1 BHK B
504	1 BHK B	604	1 BHK B	704	1 BHK B	804	1 BHK B
505	1 BHK C	605	1 BHK C	705	1 BHK C	805	1 BHK C
506	2 BHK A1	606	2 BHK A2	706	2 BHK A1	806	2 BHK A2
<b>9th Floor</b>		<b>10th Floor</b>		<b>11th Floor</b>		<b>12th Floor</b>	
901	2 BHK A1	1001	2 BHK A2	1101	2 BHK A1	1201	2 BHK A2
902	1 BHK A	1002	1 BHK A	1102	1 BHK A	1202	1 BHK A
903	1 BHK B	1003	1 BHK B	1103	1 BHK B	1203	1 BHK B
904	1 BHK B	1004	1 BHK B	1104	1 BHK B	1204	1 BHK B
905	1 BHK C	1005	1 BHK C	1105	1 BHK C	1205	1 BHK C
906	2 BHK A1	1006	2 BHK A2	1106	2 BHK A1	1206	2 BHK A2

**B Wing - Patliputra**

Unit No.	Type	Unit No.	Type	Unit No.	Type	Unit No.	Type
<b>1st Floor</b>		<b>2nd Floor</b>		<b>3rd Floor</b>		<b>4th Floor</b>	
101	2 BHK B1	201	2 BHK B2	301	2 BHK B1	401	2 BHK B2
102	2 BHK B1	202	2 BHK B2	302	2 BHK B1	402	2 BHK B2
103	1 BHK B	203	1 BHK B	303	1 BHK B	403	1 BHK B
104	1 BHK C	204	1 BHK C	304	1 BHK C	404	1 BHK C
105	2 BHK A1	205	2 BHK A2	305	2 BHK A1	405	2 BHK A2
106	2 BHK A1	206	2 BHK A2	306	2 BHK A1	406	2 BHK A2
107	1 BHK C	207	1 BHK C	307	1 BHK C	407	1 BHK C
108	1 BHK B	208	1 BHK B	308	1 BHK B	408	1 BHK B
<b>5th Floor</b>		<b>6th Floor</b>		<b>7th Floor</b>		<b>8th Floor</b>	
501	2 BHK B1	601	2 BHK B2	701	2 BHK B1	801	2 BHK B2
502	2 BHK B1	602	2 BHK B2	702	2 BHK B1	802	2 BHK B2
503	1 BHK B	603	1 BHK B	703	1 BHK B	803	1 BHK B
504	1 BHK C	604	1 BHK C	704	1 BHK C	804	1 BHK C
505	2 BHK A1	605	2 BHK A2	705	2 BHK A1	805	2 BHK A2
506	2 BHK A1	606	2 BHK A2	706	2 BHK A1	806	2 BHK A2
507	1 BHK C	607	1 BHK C	707	1 BHK C	807	1 BHK C
508	1 BHK B	608	1 BHK B	708	1 BHK B	808	1 BHK B
<b>9th Floor</b>		<b>10th Floor</b>		<b>11th Floor</b>		<b>12th Floor</b>	
901	2 BHK B1	1001	2 BHK B2	1101	2 BHK B1	1201	2 BHK B2
902	2 BHK B1	1002	2 BHK B2	1102	2 BHK B1	1202	2 BHK B2
903	1 BHK B	1003	1 BHK B	1103	1 BHK B	1203	1 BHK B
904	1 BHK C	1004	1 BHK C	1104	1 BHK C	1204	1 BHK C
905	2 BHK A1	1005	2 BHK A2	1105	2 BHK A1	1205	2 BHK A2
906	2 BHK A1	1006	2 BHK A2	1106	2 BHK A1	1206	2 BHK A2
907	1 BHK C	1007	1 BHK C	1107	1 BHK C	1207	1 BHK C
908	1 BHK B	1008	1 BHK B	1108	1 BHK B	1208	1 BHK B

**EMPIRE**  
INDUSTRIAL CENTRUM  
AMBERNATH

**KUCH  
KHAAS  
HAI**

