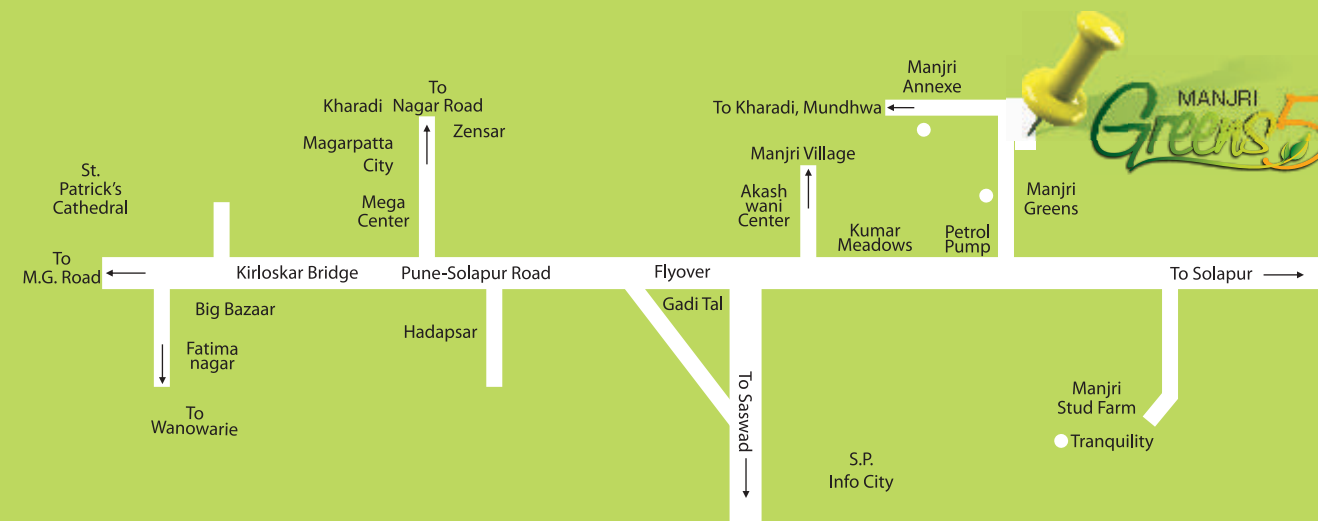


Making Manjri Greens Phase 5 your home - a decision,  
your heart and mind will agree with!

Location Map (Not to scale)



Site: S.No. 85/86, Opp. Manjri Stud Farm, Pune-Solapur Rd., Manjri-Bk, Pune - 412 307

Credits

Architect  
Arch. Prakash Kulkarni

RCC Consultant  
J + W Consultants

Legal Advisor  
Adv. J.V.Pande

Promoters



We build. You benefit.

Nirmal Commercial Center, 158, M. G. Road, Pune - 411 001  
Ph : 020-26361501 / 26362416, E-mail : bkjhala@hotmail.com, bkjhala@vsnl.in

Developers : **B Associates**

For Booking & Enquiries



Call : 98508 12823 / 98507 98695

Email : mgnsrft@gmail.com, www.magnusrealtypune.com



Sense of the **mind** &  
sensitivity of the **heart**

# MANJRI Greens 5

2 & 3 BHK apartments & row houses



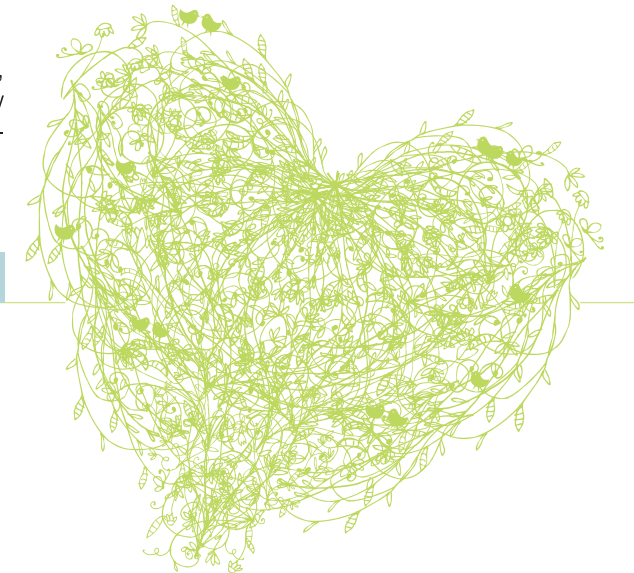
## The Best Come Together



Experience & the intelligence of the mind are here at work to give you homes that have optimum utilization of space, smart planning and up-to-the-mark quality. At the same time, the place you call home is made from the heart. Sensitive to your needs, careful consideration to aesthetics and liberally accommodated already present natural features integrate together to give you, 'Complete Living' in its true sense.

When the best of the mind and the heart come together, there's no space for compromise. And that is your home at Manjri Greens Phase 5, where luxury living & nature go hand in hand.

On the offer are ...The RIGHT sized 2-3 BHK flats, planned in 9 storied towers & spacious row houses, both fitted with truly luxurious & state-of-the-art specifications.



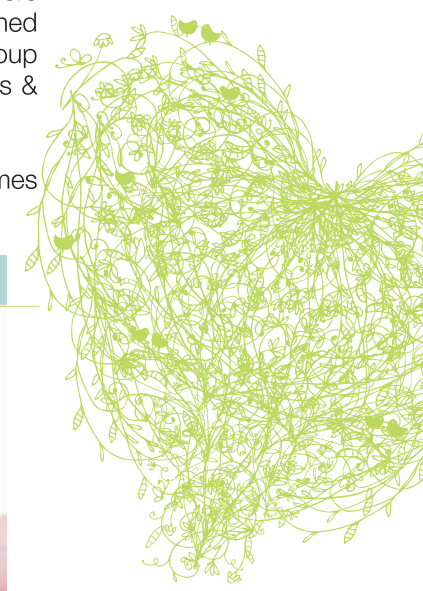


## From the house of experts

B.K.Jhala & Associates is one of the oldest and most respected names in the real estate market of Pune. Their landmark projects with their quality and thoughtful offerings spanning across the city, more than 4 decades of experience and more than 5 million sq.ft. of construction have translated into satisfied smiles from thousands of customers. These are the people you can trust with your mind and heart.

B.K.Jhala & Associates have pioneered development of residential property in Manjri, the most thriving eastern suburb of Pune. All the previous phases of Manjri Greens (Phase 1 to 4) have received a stupendous response & are fully sold out with a high rate of occupancy. Manjri Greens Phase 5 enjoys this rich legacy & now offers an even more luxurious option for our distinguished buyers. The other successful projects by the group in the area are Tranquility, Manjri Greenwoods & Manjri Greens Annexe.

When the heart and mind are in sync, trust comes naturally.





# Complete Living

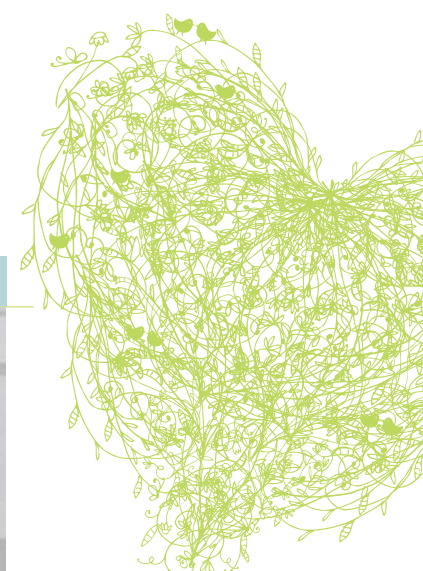
Urban living is challenged by a lot of external pollution of air, noise and internal pollution of stress. At Manjri Greens Phase 5, we've given solutions for it all.....

The verdant & large green spaces surrounding your home, the well-planned & spacious lay-out of the project, the flora and fauna which keeps the external pollution at bay. While the relaxing amenities, the cultured neighborhood, the complete assurance of a healthy lifestyle will never let stress affect your life.

Live life 'full-size' at Manjri Greens 5.

MANJRI  
**Greens 5**

2 & 3 BHK apartments and row houses





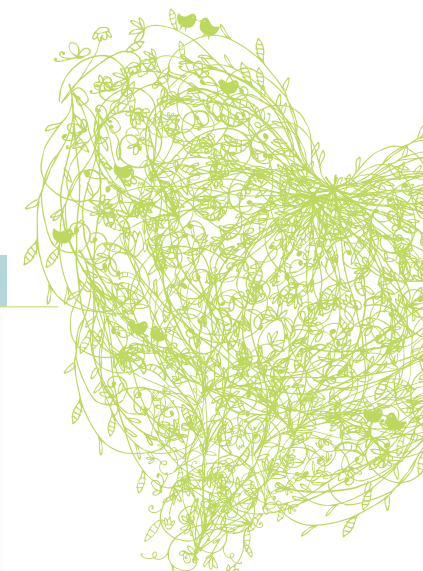
## Perfection falls into place

When experience & customer orientation come together, it shows. That is exactly how you'll know the spaces at Manjri Greens Phase 5 are in perfect sync with each other. The practical demands on one side while the softer considerations on the other.

The smartness of the mind, the detailing of the heart.

Well-designed, well-planned, detailed inside out, is your home here. At the same time enhancing community living, creating spaces for every member of the family and still keeping some individual areas to relax... make it an ideal dwelling.

After all, with the mind and heart together, perfection has to fall into place.

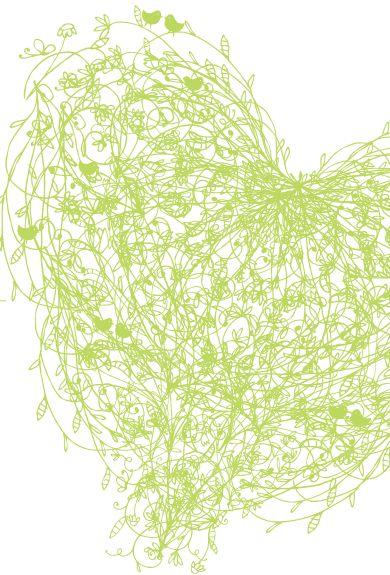




# A balanced lifestyle

## Amenities

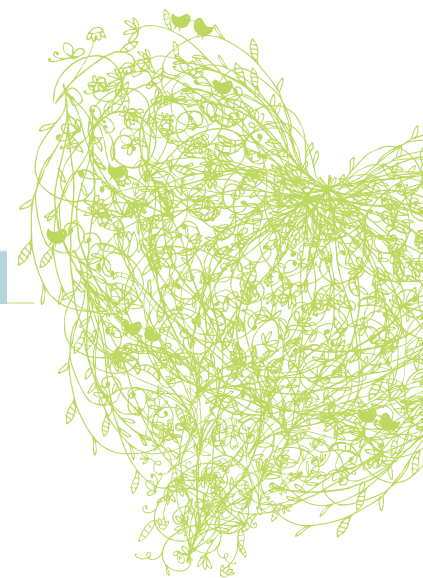
- Compound wall for the project
- Internal Roads within the project in Tremix Concrete / Paving Blocks / Asphalt
- Street Lights on internal roads
- Developed / Landscaped Gardens
- Club House with Gymnasium, Swimming Pool & Indoor games
- Generator back up for lifts & common areas.





## Specifications

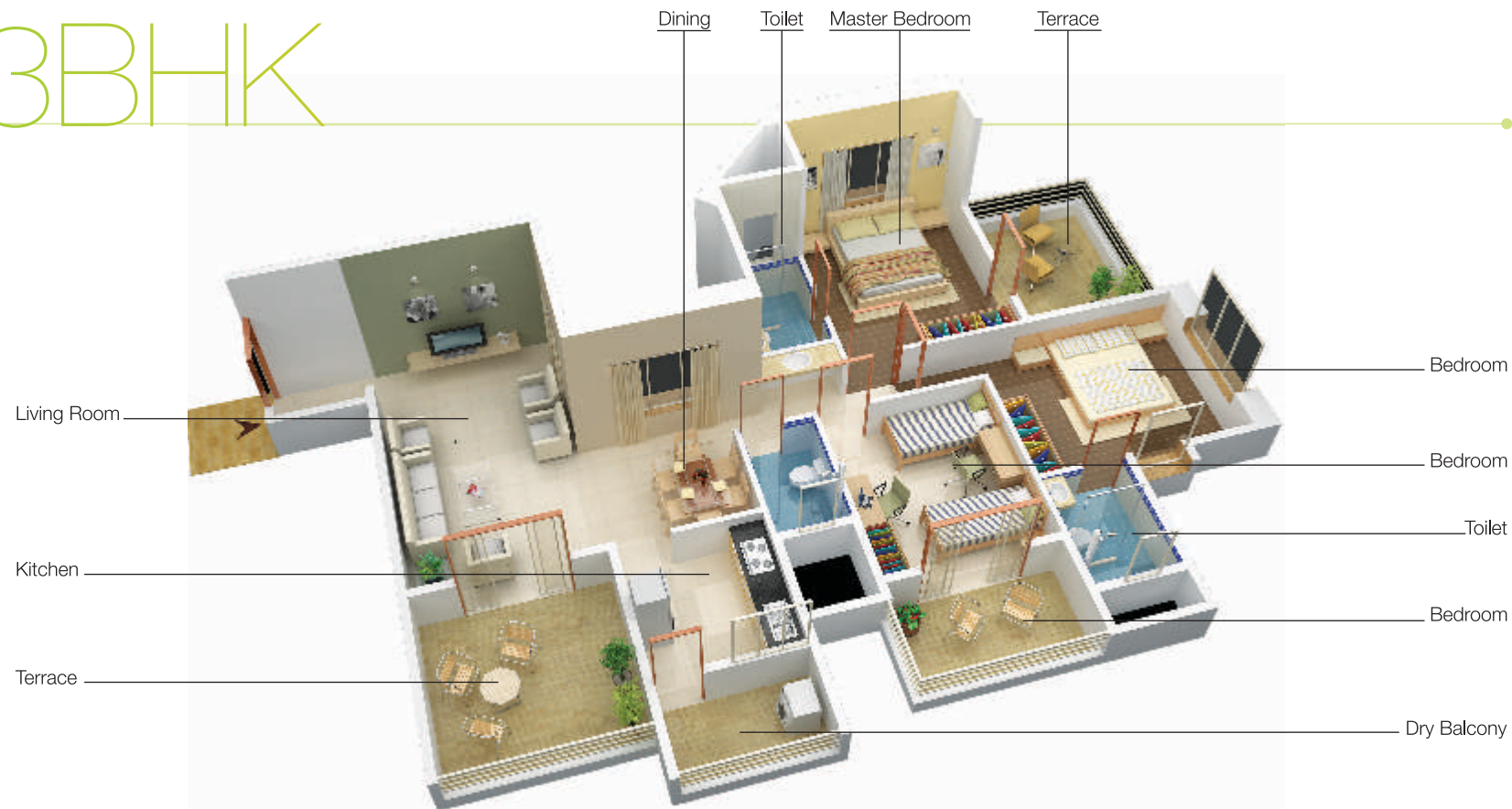
- RCC Framed Structure
- Brick / Block work for External / Internal walls of, required thickness
- External Sand Faced & Internal POP finish plaster
- Provision for Water Purifier in the kitchen & Solar Hot Water supply in Master Bedroom toilet. Concealed plumbing with good quality pipes.
- Bath fittings : Branded sanitary-ware in pastel colors & quality C. P. fittings with hot / cold mixers.
- All doors laminated on both sides. Cylindrical locks to all doors.
- Powder coated aluminum sliding windows with M.S. Safety Grills and Mosquito mesh
- Marble Window Sills
- 2'X2' Vitrified Tiles in entire unit with skirting. Dado up to Lintel level in Bathrooms and Kitchen. Matt-color-co-ordinated tile in Toilets & Terraces
- Granite Kitchen Platform with S.S. Sink & Service Platform
- Electrical Works: Concealed FRP copper wiring (ISI marked), Modular switches, MCBs & ELCBs of good quality. Provision of A/C, Split A/C, Tel / T V points in all bedrooms & living room. Provision for inverter point
- Paving blocks / chequered tiles in the parking
- Paint: Internal walls in Acrylic Emulsion . External Apex or equivalent quality.
- Lift of standard make
- Designer Entrance lobby



# 2BHK



# 3BHK



## A dream locale

- S.P. Info City : 5 kms
- Magarpatta City : 5 kms
- Amanora Park Town : 5 kms
- AFMC : 7 kms
- Bishop's / St. Mary's School : 9 kms
- MIT-Gurukul School : 6 kms
- MG Road : 11 kms
- Pune Rly Stn : 14 kms
- Prayag Dham Ashram : 18 kms

A fast developing destination – Special Townships & SEZs like Magarpatta City, Amanora and SP Infocity close by.

The 2-lane Pune-Solapur highway being converted into a 4-lane divided carriage way thereby improving connectivity and giving boost to the infrastructure of this fast developing eastern suburb.

Easy access to a number of reputed educational institutes are within comfortable driving distance. Everyday markets, shops, grocery stores are conveniently located.

