

Life  
made  
stunning.

RISINIA  
**TRENDILLA**

Life, decorated

2 & 3 BHK

GATED COMMUNITY  
LUXURY APARTMENTS  
@ BACHUPALLY

Everyday  
gets glorious.



Life is like a flower vase that needs to be decorated.  
Decorated with enchanting times and enlivening  
moments. Because what you make of your times is  
what they fill your moments with. But what makes  
life wonderful is when it gets crowned by glory.  
To make that happen, here comes a residence that  
befits you. Come home to Risinia Trendilla.

A project by



3.3 ACRE  
VASTNESS

318  
APARTMENTS

14,500 SFT  
CLUBHOUSE

9  
FLOORS



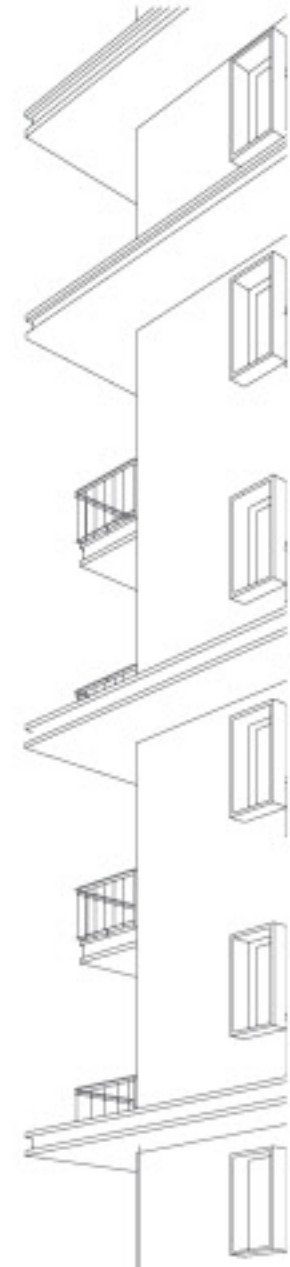
Life  
with a  
view.



AERIAL VIEW



RISINIA  
**TRENDILLA**  
Life, decorated



KEY PLAN



Area Statement

Flat No.	1	2	3	4	5	6	7	8	9	10	11	12	13	14
Facing	West	East	East	East	East	East	East	East	West	West	West	West	West	West
Type	3 BHK	3 BHK	2 BHK	2 BHK	2 BHK	2 BHK	3 BHK	3 BHK	3 BHK	3 BHK	3 BHK	3 BHK	3 BHK	3 BHK
Areas in Sft.	1695	1695	1295	1195	1195	1195	1595	1695	1695	1295	1195	1195	1195	1595



Joyousness  
to feel.

Life gets sprinkled with flavours of joy when you have a neighbourhood filled with people like you. The Block A of Risinia Trendilla has a lovely mix of 2 BHK and 3 BHK homes with close to fourteen apartments on each floor, making for a fantastic neighborhood.

TYPICAL FLOOR PLAN (BLOCK - A)



## TYPICAL FLOOR PLAN (BLOCK - B)



## KEY PLAN



## Area Statement

Flat No.	1	2	3	4	5	6
Facing	West	East	East	East	West	West
Type	3 BHK	3 BHK	2 BHK	3 BHK	3 BHK	3 BHK
Areas in Sft.	1695	1695	1295	1695	1695	1295



Limited  
but lovely.

The Block B of Risinia Trendilla has just six units on each floor. It's more like a neighbourhood that gives you the privacy you want and the friends you'd want to bond with.



Area Statement

Flat No.	1	2	3	4	5	6	7	8	9	10	11	12	13	14	15	16
Facing	West	East	East	East	East	East	East	East	East	West	West	West	West	West	West	West
Type	3 BHK	3 BHK	2 BHK	2 BHK	2 BHK	3 BHK	2 BHK	2 BHK	3 BHK	3 BHK	3 BHK	2 BHK	3 BHK	2 BHK	2 BHK	2 BHK
Areas in Sft.	1695	1695	1295	1295	1295	1595	1295	1295	1695	1695	1595	1295	1595	1295	1295	1295



TYPICAL FLOOR PLAN (BLOCK - C)



More  
adds to  
the merry.

Take a look around and you will come to the Block C of Risinia Trendilla. This is the block with the most number of homes on each floor. It hosts a mix of homes that are generously spaced between each other.



Vast  
but wonderful.

Risnia Trendilla is sure to set a trend in its vicinity. With three blocks in its premises and numerous amenities, the layout has been designed to bestow the residents of this inviting gated community with freshness every morning along with lots of space to live free.

### LEGEND

- A) ENTRY & EXIT
- B) CHILDREN'S PLAY AREA
- C) MULTI PURPOSE COURT
- D) KIDS' ACTIVITY CENTRE
- E) BADMINTON / SQUASH COURT BELOW
- F) GYMNASIUM
- G) SCREEN WALL



### MASTER PLAN





Times  
that'll delight.



Welcome to Club Trendilla, and you'll find yourself welcomed to a place that has all that you wished for. The two-level clubhouse spread across 14,500 sft will be the reason for your delight and dream. From a Swimming Pool to corners that are cool. This is just the place for them all.

### CLUBHOUSE

#### GROUND FLOOR

- Pool Deck
- Adult Swimming Pool
- Kids' Swimming Pool
- Reception/Waiting Lounge
- Guest Suite Rooms
- Office Room/Conference

#### FIRST FLOOR

- Indoor Games
- Badminton/Squash Court
- Waiting Lounge

#### TYPICAL FLOOR PLAN

- Terrace
- Gymnasium
- Kids' Activity Centre
- Badminton/Squash Court
- Amphitheater
- Multipurpose Function Hall







### AMENITIES & FEATURES

- Children's Play Area
- Swimming Pool
- Indoor Badminton Court
- Water Softener Plant
- Water Meter for each Flat
- Grand Entrance Lobby
- Security Rooms
- Basketball Half-court
- Elders' Sitting Areas
- Intercom
- Rain-water Harvesting
- Kids' Adventure Park
- Central Courtyard
- Solar-fencing
- Water Body
- STP Plant
- Skating Rink
- Jogging Track / Walking Track
- Wi-Fi in Common Areas
- All-around Security with CCTV
- Watchman Room for each Block
- Open Terrace, Party Deck & Sit-outs



Pleasure  
of leisure.

Become members of Club Trendilla and have at your disposal a good number of leisure and lifestyle therapies. Let's say, everything from a Theme Garden to a Badminton Court is right inside here, set to be your leisure destinations.



Raising  
the standards.

#### STRUCTURE

RCC-framed with earthquake-resistant loads.

#### SUPER STRUCTURE

9" external walls and 4" internal walls with cement bricks.

#### WATER-PROOFING

For all toilets and wash areas.

#### TELECOM

Telephone point in living area.

#### POWER BACK-UP

100% DG back-up for common areas and inside flats (fans and lights in all rooms) excluding ACs, geysers and 15 AMP sockets.

### SPECIFICATIONS



#### DOORS AND WINDOWS

Teak wood frame, with teak veneer shutter for main door. All frames of teakwood in bedroom. Internal door molded flush doors. UPVC windows with mosquito mesh with iron grill. UPVC sliding door in the balcony.

#### PLUMBING AND SANITARY

EWC of reputed make. Wash basins in dining area, master and children's toilet of reputed make. Single lever fixtures with wall-mixer-cum shower CPVC pipes for plumbing of premium make.



#### FLOORING AND DADO

Granite flooring at lobbies and anti-skid vitrified tiles in common areas. 2x2 doublecharged vitrified tiles in hall, dining and remaining bedrooms of premium make. Rustic ceramic tiles in balconies. Glazed ceramic tile dado upto 6-0" height in all bathrooms of reputed brand.

#### ELECTRICAL

PVC insulated wires of premium make. Power outlets for geysers in all bathrooms. Power plug for cooking range, chimney, refrigerator, microwave ovens, mixer/grinders in kitchen. Plug points for refrigerator and T.V. wherever necessary. 3-phase supply for each flat and individual meter boards. AC point in all bedrooms.

#### SOLAR POWER FENCING

Solar power fencing all around the compound.

#### LANDSCAPES AND HARDSCAPES

Beautifully designed landscapes and hardscapes along the walk path, activity zones, children's play areas etc. Exclusive lighting is provided for safe community living.



#### PAINTING

Premium emulsion with putty finish for interior walls and ceiling of premium brand. Premium emulsion or emulsion with luppum or textured finish for exteriors, as per architectural specifications. Polish for main door and enamel paint for all other doors.

#### LIFT

Automated lift of reputed make.

#### WSP & STP FOR WATER RECYCLING

Sewage Treatment Plant of adequate capacity as per norms will be provided inside the project, treated sewage water will be used for landscaping purpose.



#### KITCHEN

Granite platform with stainless steel sink with provision for both municipal and bore water connection, with provision for fixing water-purifier. Ceramic tile dado upto 2" height above kitchen granite platform. Provision for fixing exhaust fan and chimney.

#### CABLE TV

Provision for cable connection in master bedroom and living room.

#### INTERNET

Provision for cable TV connection in hall and master bedroom.

#### NOTE

Registration Charges, GST and any other taxes applicable as per government norms to be borne by customers only are not allowed.

Poetry  
that you  
see.

RISINIA  
**TRENDILLA**  
Life, decorated



FRONT VIEW



### Close to the best.

Risinia Trendilla is located in Bachupally and sets you in good proximity to places and destinations that are of good relevance. Belong to this side of Hyderabad and belong to ease, convenience and comfort. No matter what you wish to stay close to —work, education, healthcare, entertainment or transport — they are all close by.

### PROXIMITY

EDUCATIONAL INSTITUTES	MNCs	SHOPPING MALLS	HOSPITALS	NEAR
Kennedy Global School : 50 meters	HITECH City : 12 km	Inorbit Mall : 12 km	Mamatha Medical College and Hospital : 1 Km	ORR : 2 km
Silver Oaks School : 1 km	Gachibowli : 12 km	Ikea Mall : 11 km	Care Hospital : 0.0 km	Miyapur X Roads : 6 km
Delhi Public School : 200 meters	Kondapur : 10 km	Sujana Forum Mall : 7 km	Apollo Hospital : 0.0 km	Miyapur Metro Station : 7 km
		Manjeera Mall : 6 km	Mamatha Hospital : 1 km	JNTU : 9 km
		AMD Mall : 10 km	SLC Hospital : 2 km	HITECH City : 12 km
		Asian CPR Mall : 5 km	Reliant Hospital : 100 meters	Gachibowli : 16 km
				Supermarket : 100 meters

LOCATION MAP (NOT TO SCALE)

Making  
what's  
desired.

Risinia Trendilla is an imagination of Risinia Builders, a team that brings aesthetics, quality and value to their projects. The team is into creating residential and commercial ventures and brings with it, ideas into projects that make a difference to the very concept of living and lifestyle. Come make life different with a home here.



Survey No: 500, Opp. Kennedy Global School,  
Miyapur - Bachupally Road, Bachupally,  
Medchal - Malkajgiri (Dist)  
Call Us: **+91 9100888803 / 04 / 05**  
Email: [sales@risinia.com](mailto:sales@risinia.com)  
[www.risinia.com](http://www.risinia.com)

NOTE: This brochure is only a conceptual presentation of the project and not a legal offering.  
The promoters reserve the right to make changes in plans, specifications and elevation, as deemed fit.

Artifice +91 9885253570