

LODHA PANACHE

Hinjewadi, Pune

LODHA PANACHE RESIDENCES IS
YOUR NEW HOME - AN URBAN RETREAT
IN THE HEART OF THE PUNE.
AN EXCLUSIVE INVITATION TO THIS
MODERN, RESIDENTIAL DEVELOPMENT.



a vibrant MIX

APARTMENTS IN HOLIDAY STYLE
CONTEMPORARY DESIGN
VIBRANT LOCATION
HISTORICAL VIEWS WITH NATURE
FLOWING, SPACIOUS INTERIORS
TERRACE POOL FOR INFINITE VIEWS



THE NEW MOD DERN

EVIDENT IN THE CITY'S NEW
AND SIGNIFICANT
CONTEMPORARY STRUCTURES

Don't talk about. One that's best experienced surreptitiously. One that lets you please your innermost sensibilities with the very best of the very best. A life of luxury to you is one where pampering yourself is something you want to do in a space that let's you let down your guard. Welcome to the confidentially luxurious life at **Lodha Panache**.

OWN A PLACE WHERE LIFE'S IS A PARTY

Now you can have it all at once-in one place. You can live in the heart of the city amidst everything that's going on, with a luxury lifestyle and high-end amenities. Meanwhile, the city's biggest and best attractions are all close by, day and night, for action and relaxation alike.



10,000 SFT LAVISH CLUBHOUSE
TERRACE POOL & KIDS' POOL
INDOOR GAMES
A/C GYMNASIUM
SPA CENTER
CONFERENCE ROOM
GUEST ROOMS
CAFETERIA
WAITING LOUNGE



WHERE
EVERY THING
IS POSSIBLE



A MODERN RETREAT UNSIDE OUTSIDE & TERRACE

ARTISTIC RENDER
OF A LAVISH TWILIGHT VIEW



INFINITELY ENJOYABLE

Discover a residence made for your discreet extravagances. A higher order of luxury that goes beyond labels and overt exhibition. Feel like you're the only person in the world as you set foot inside your grand private residence. Disappear into your state of the art apartment but that's not all that makes Lodha Panache the luxurious experience it is. The skyboxes on the top floors reap the advantage of to slip into on your own sundeck being one of the tallest buildings in that location, giving you panoramic views of the city historic scape.

ARTISTIC RENDER
OF A LAVISH SIT OUT



MASTER PLAN

PROJECT HIGHLIGHTS

LEGEND

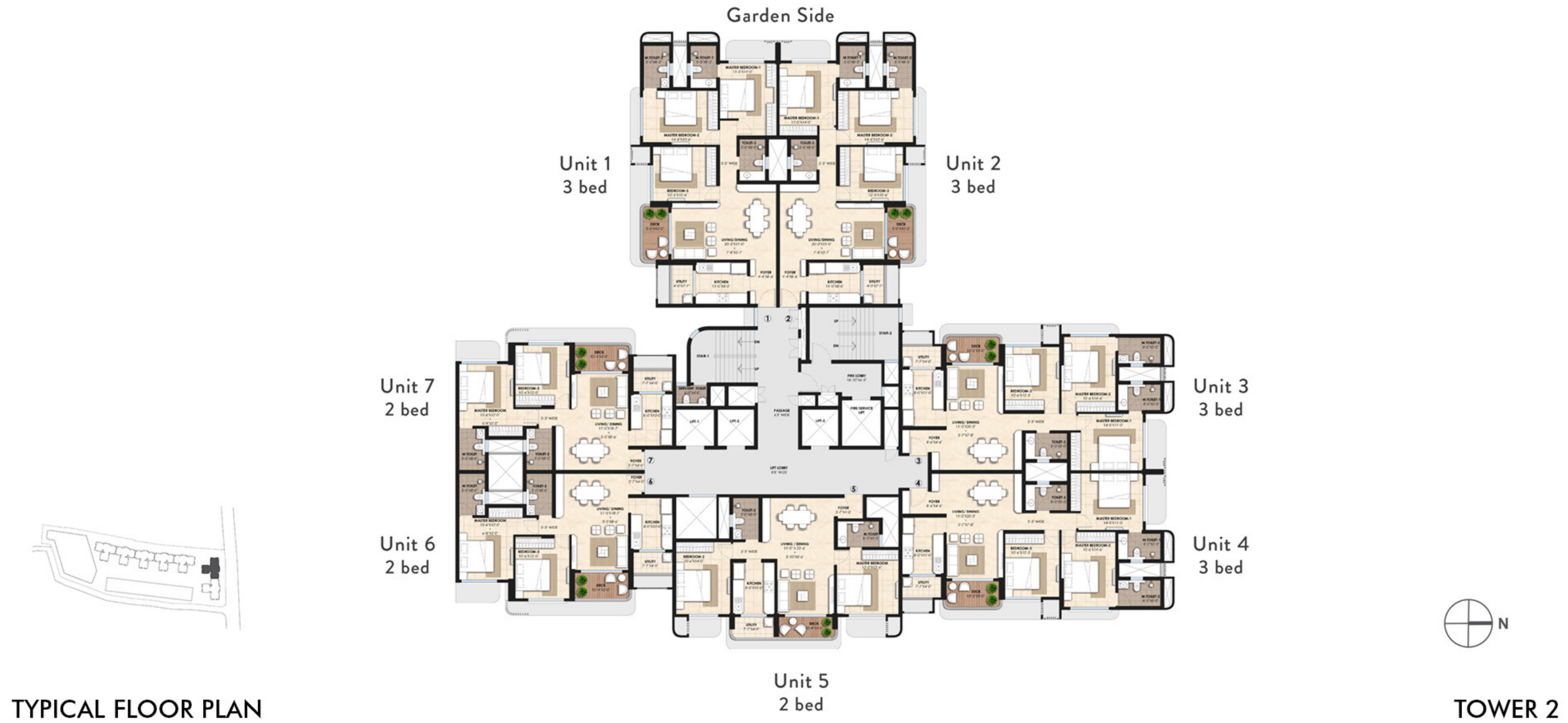
1. ENTRANCE
2. DRIVEWAY
3. TEMPLE
4. SEATING POCKETS
5. WORK SPACES (OUTDOOR)
6. SWIMMING POOL
7. KIDS' POOL
8. WALKWAY
9. POOL DECK
10. CHILDREN'S PLAY VILLAGE
11. MULTI-PURPOSE LAWN
12. ELEVATED DECK WITH SWINGS BELOW
13. PET PARK
14. SKY SPORTS CLUB (E) - BADMINTON COURTS (INDOOR)
CRICKET NETS, FOOTBALL COURT &
BASKETBALL COURT
15. CLUB INFINITY (BELOW)
16. PARKING (BELOW)

E - ELEVATED

MASTER PLAN



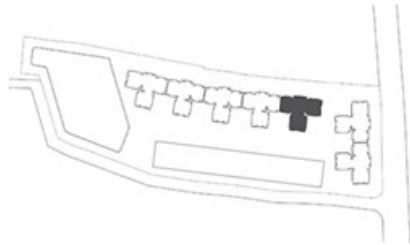
FLOOR PLANS



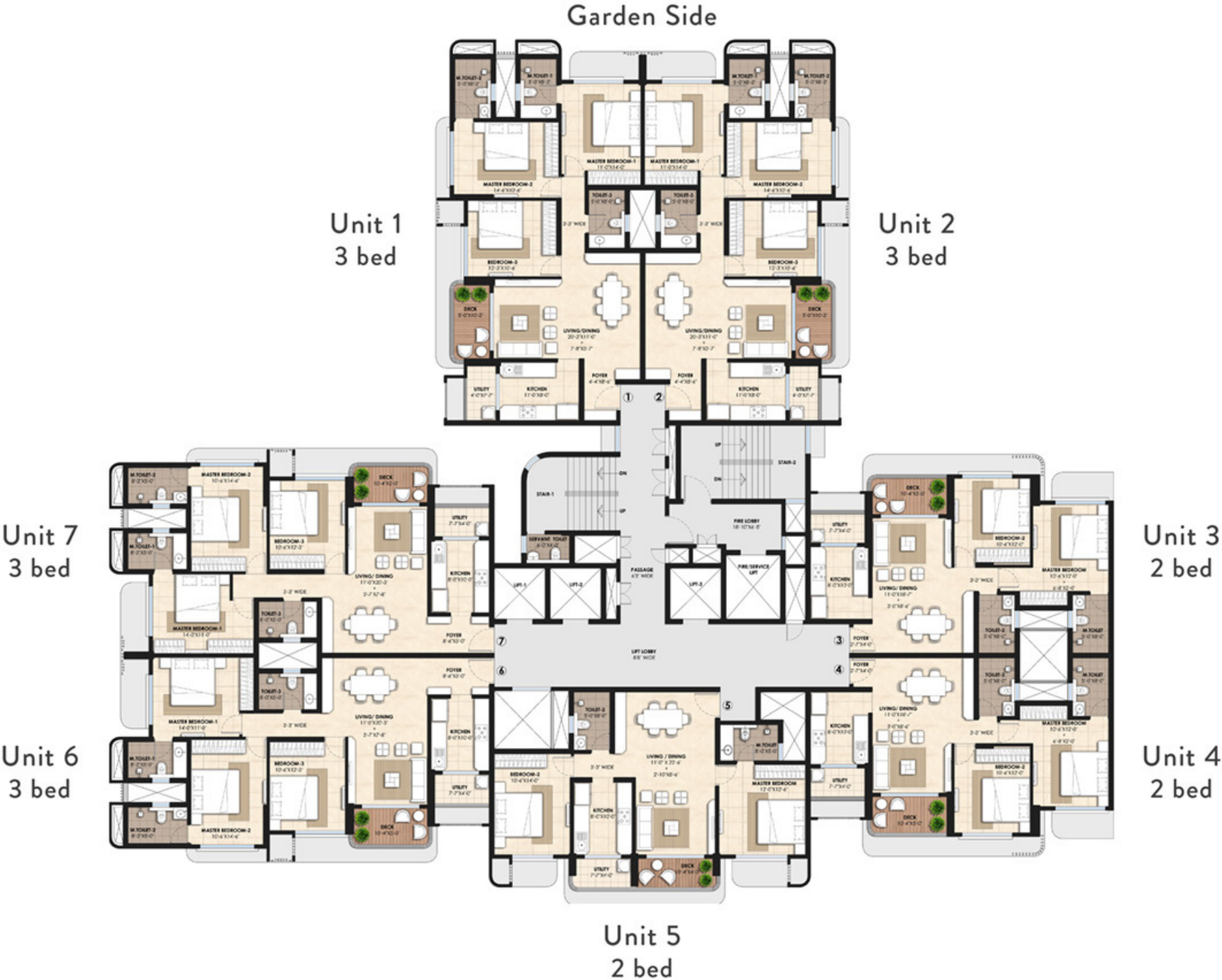
TYPICAL FLOOR PLAN

TOWER 2

FLOOR PLANS



TYPICAL FLOOR PLAN

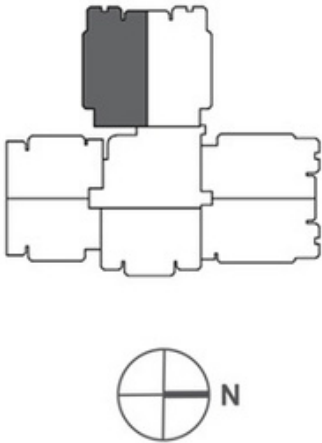


TOWER 3

UNIT PLAN

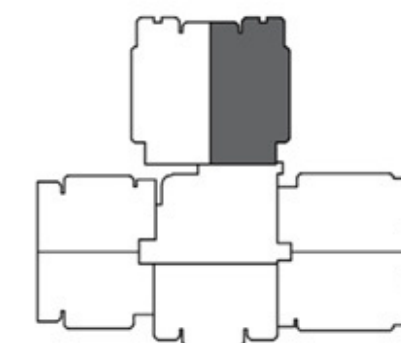
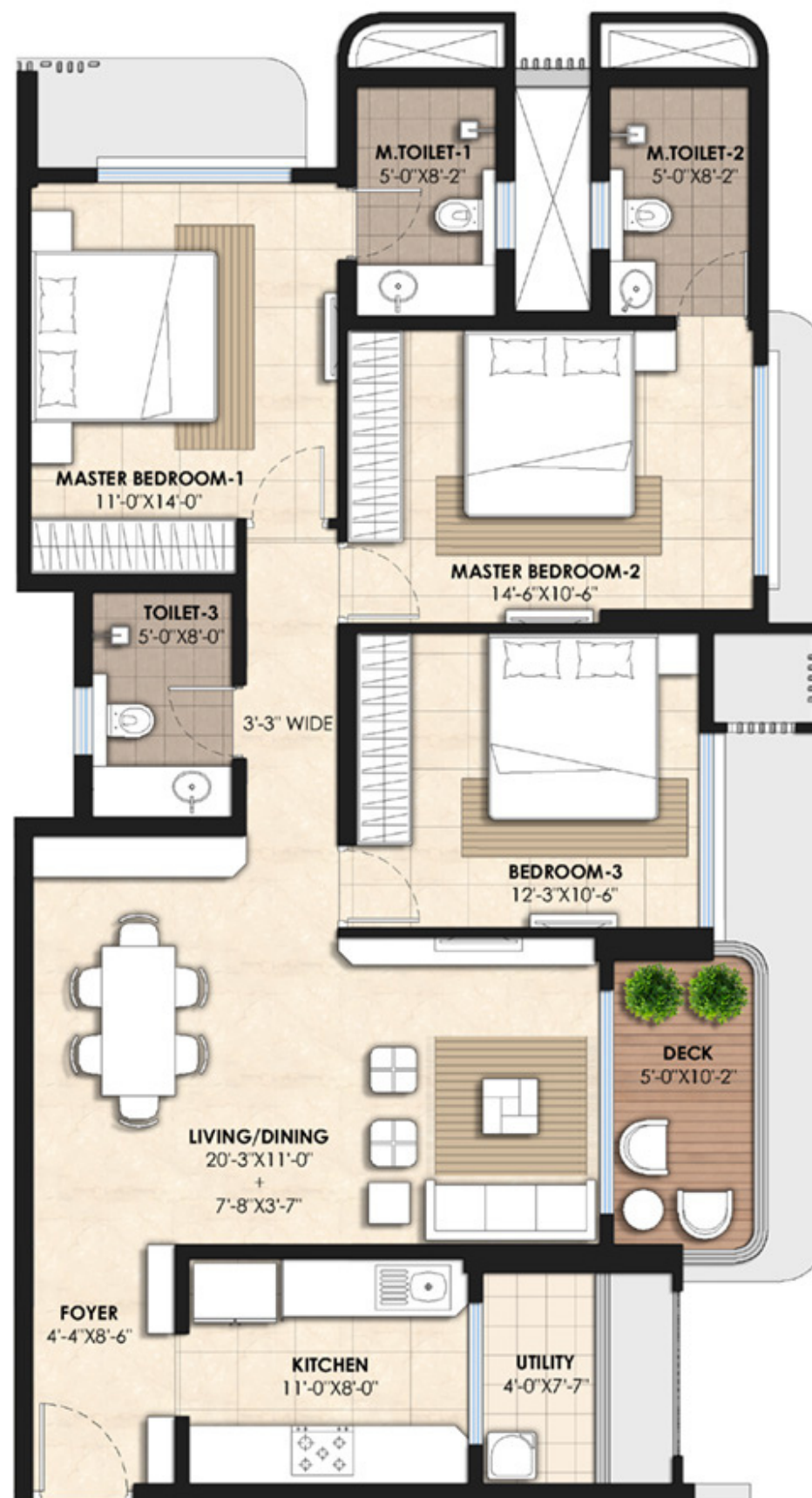


UNIT 1 - 3 BED



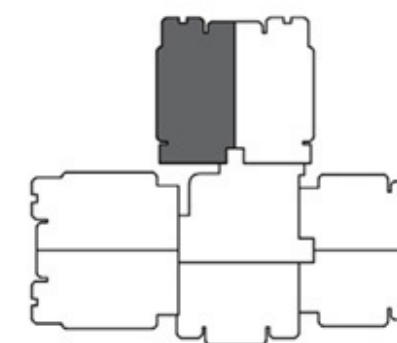
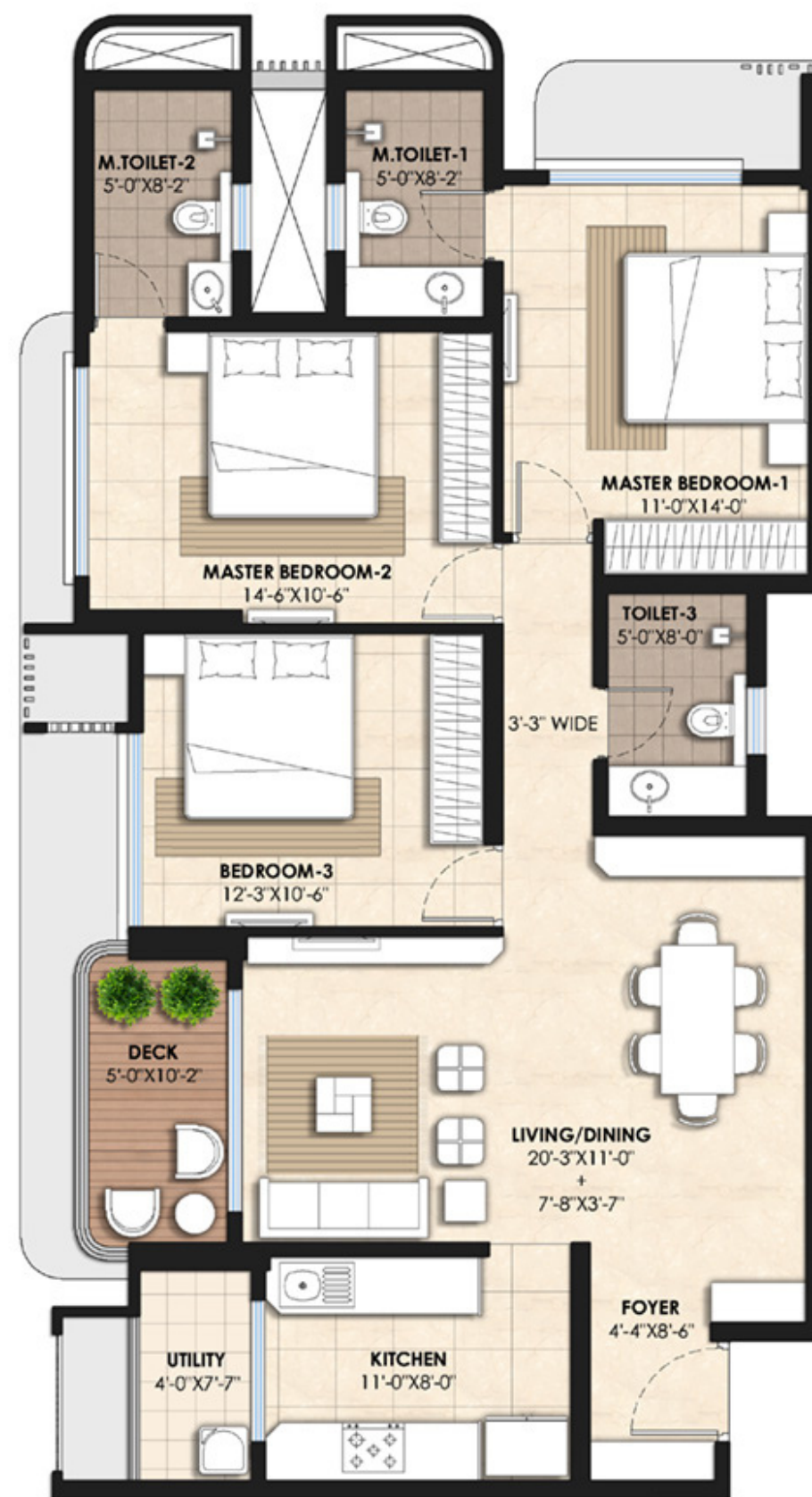
TOWER 2

UNIT 2 - 3 BED



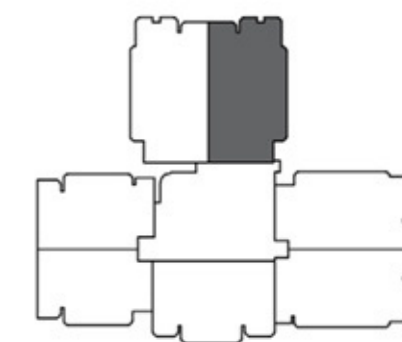
TOWER 2

UNIT 1 - 3 BED



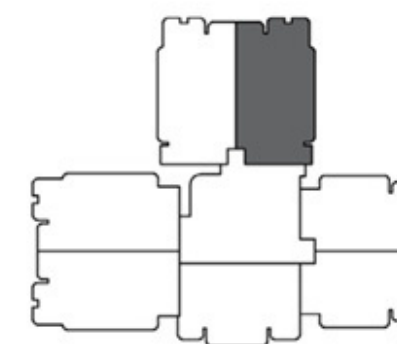
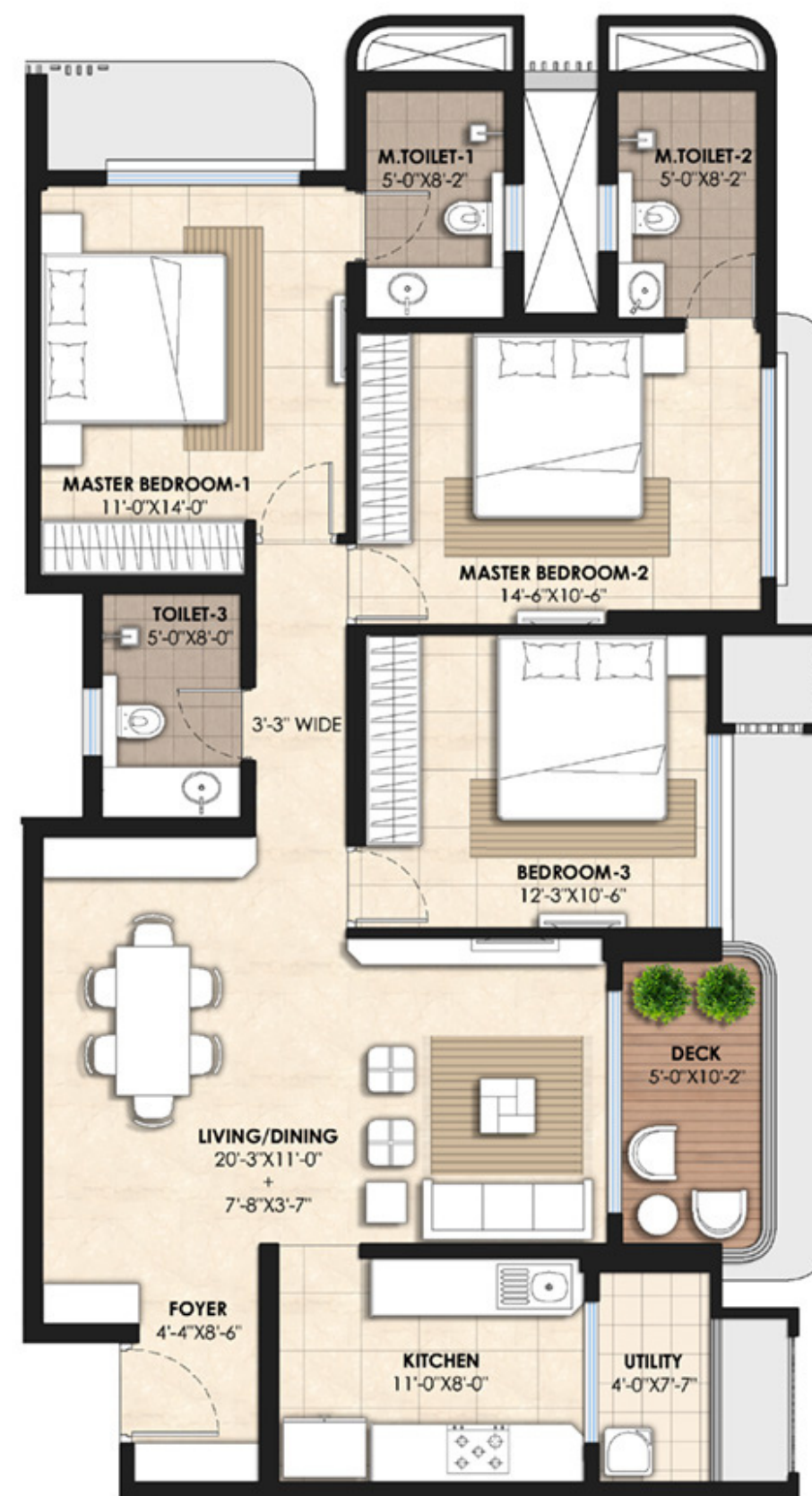
TOWER 3

UNIT 2 - 3 BED



TOWER 2

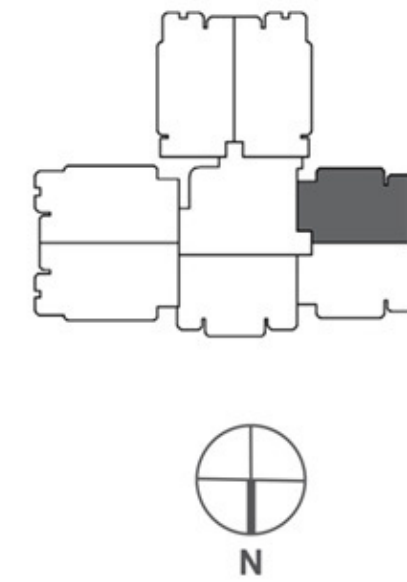
UNIT 2 - 3 BED



TOWER 3



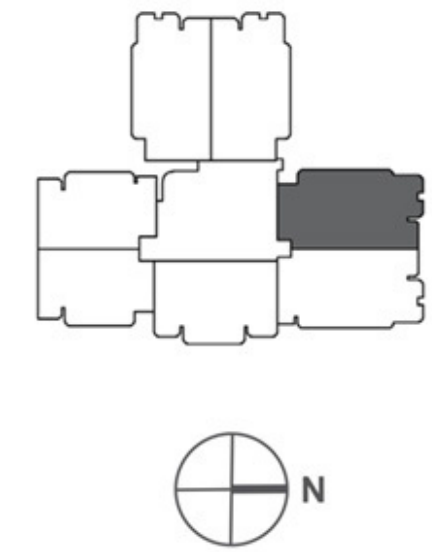
UNIT 3 - 2 BED



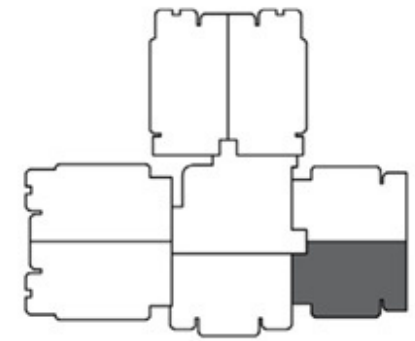
TOWER 3



UNIT 3 - 3 BED

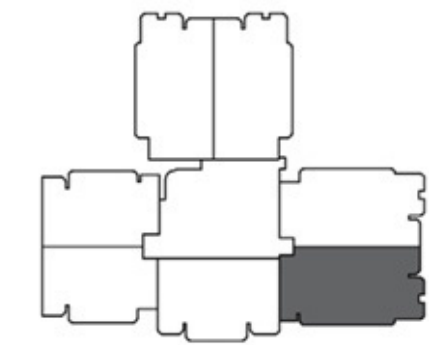


TOWER 2



UNIT 4 - 2 BED

TOWER 3

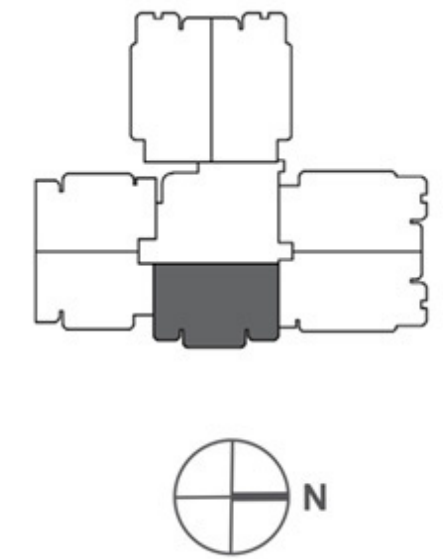


UNIT 4 - 3 BED

TOWER 2



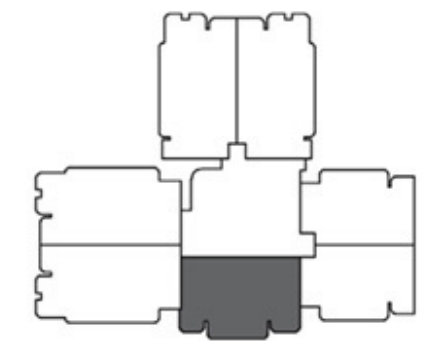
UNIT 5 - 2 BED



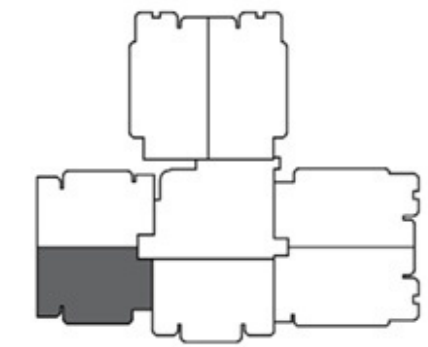
TOWER 2



UNIT 5 - 2 BED

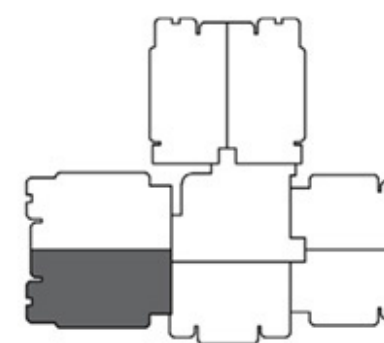


TOWER 3



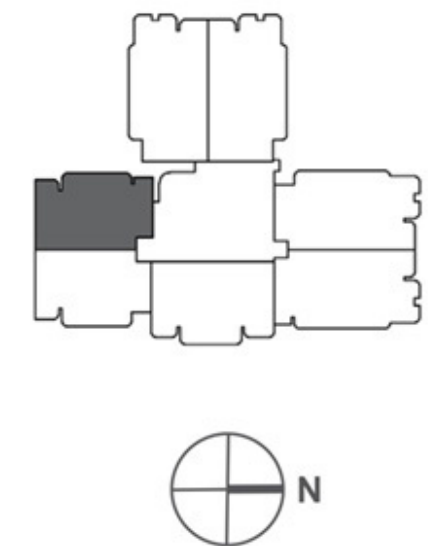
UNIT 6 - 2 BED

TOWER 2



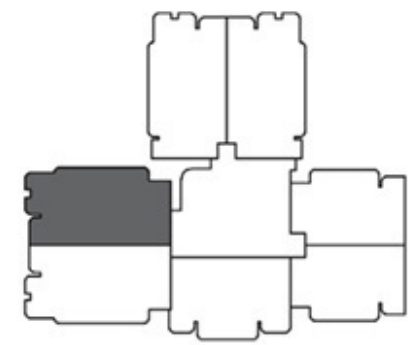
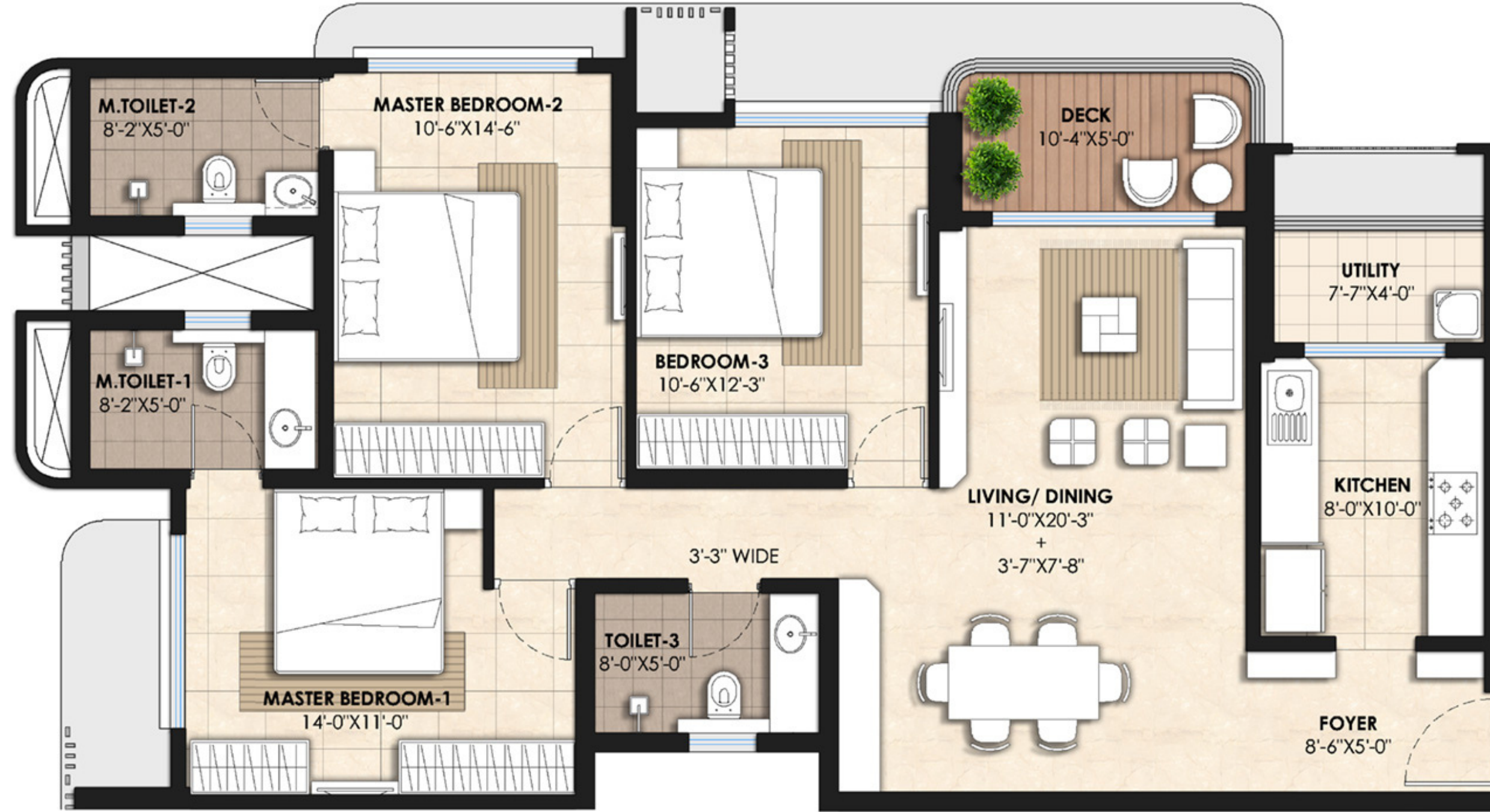
UNIT 6 - 3 BED

TOWER 3



UNIT 7 - 2 BED

TOWER 2



UNIT 7 - 3 BED

TOWER 3



TRULY INSPIRED LIVING

A community is about all round development- the aesthetics started from architecture, design each units, uniquely created deck spaces for views and fresh breath, creating amenities and plush life at terrace Lodha Panache never stopped there and also give a star luxury living in every common space, lobbies and lift lounges-live a star a life.

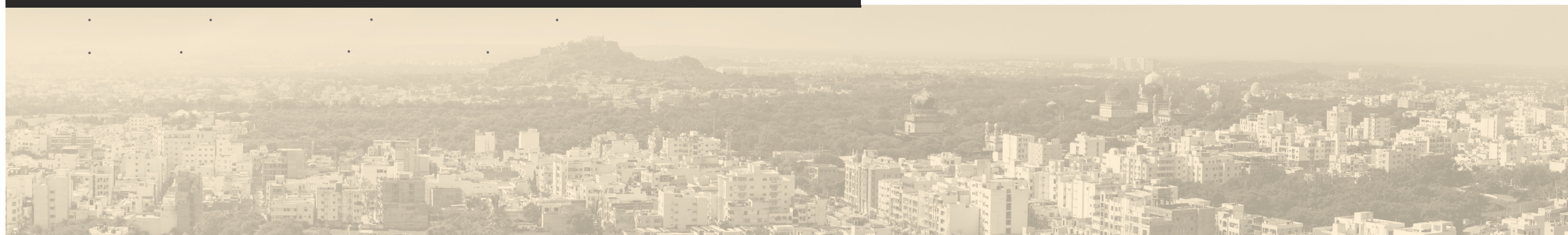
<p>FRAMED STRUCTURE RCC framed structure to withstand wind & seismic loads</p> <p>SUPER STRUCTURE 8"/9" Thick bricks/blocks work for external walls and 4"/5" thick bricks/blocks for internal walls</p> <p>External Double coat cement plaster of 12mm thick with smooth finishing</p> <p>Internal Cement plastering with 2 coats of luppam finished to zero level</p>	<p>PAINTING External Textured finish & two coats of exterior emulsion paint with architectural features</p> <p>Internal Smooth finish with two coats of premium acrylic emulsion paint of best brands over a coat of primer</p>	<p>ROOFING Asph/Flt waterproofing with 2 coats of best brands over a coat of primer</p>	<p>TRULY INSPIRED LIVING</p>	<p>WATER SUPPLY Supply of water from the main supply line with pre-paid gas meters</p>	<p>WTP & STP Fully treated water made available through exclusive water softening & purification plants for each unit A Sewage Treatment Plant of adequate capacity as per norms will be provided inside the project; treated sewage water will be used for landscaping & flushing purposes The water from the terrace & open areas will be collected through rain water pipes, which will be discharged in rainwater harvesting pits to recharge the ground water</p>
<p>DOORS Main Door Frame Best quality Teak wood frame with melamine/ PU finish with 7' entrance</p> <p>Main Door Shutter 40mm Both sides Teak veneer shutter with melamine/PU finish</p> <p>Internal Door Frame Best quality hardwood door frame with polish/ paint</p> <p>Internal Door Shutter BWP grade both sides 1mm thick laminate</p> <p>French Doors(If any) Anodized aluminum/uPVC door frames with performance glass acoustically treated/tinted float glass panelled shutters & designer hardware of best brands</p>	<p>Bathrooms Anti-skid ceramic tiles</p> <p>Corridors Granite/marble/SVGT tiles</p> <p>Living Balconies Anti-skid vitrified/ceramic tiles</p> <p>Staircase Granite/marble/Kota stones</p> <p>TILE CLADDING Dadoing in kitchen Glazed ceramic tiles dado up to 2' height above kitchen platform(optional)</p> <p>Bathrooms Glazed ceramic tile dado up to full height/ceiling height</p> <p>Utilities Rustic vitrified tile of SKGT. Tile dado up to 3' height</p>	<p>ELECTRICAL Concealed copper wiring(Havells or equivalent) Power outlets for air-conditioners in all bedrooms Power outlets for geysers in all bathrooms Power plugs for cooking range chimney, refrigerators, microwave ovens, mixer/grinders in kitchen, washing machine Three-phase supply for each unit & individual meter boards Elegant designer modular electrical switches Miniature Circuit Breakers(MCB) for each distribution board</p> <p>UTILITIES Dish washer & washing machine provision in Utility area</p>	<p>TELECOM Telephone points in master bedroom, living room Intercom facility to all the units connecting Security</p> <p>CABLE TV Provision for cable connection in all bedrooms & living room</p> <p>INTERNET One Internet connection provision in each apartment</p> <p>LIFTS Four high speed automatic passenger lifts with rescue device with V3F for energy efficiency with granite/marble/tile cladding and one service lift (Make of Schindler/ Mitsubishi/Otis) Granite/marble cladding at ground level at lift lobby Vitrified tiles/granite tile cladding at other levels of lift lobby</p>	<p>PARKING MANAGEMENT Entire parking is well designed to suit the number of car parks required Parking signage and equipment at required place to improve driving comfort</p> <p>LPG Supply of gas from centralized gas bank to all individual apartments withpre-paid gas meters.</p>	<p>SECURITY/BMS Sophisticated, round the clock security system The complete building shall be provided with Building Management System with all facilities Panic button and Intercom are provided in the lifts connected to the Security room Surveillance cameras at the main Security & Entrance of each block for screening of visitors Solar powered security fence for total compound</p>
<p>WINDOWS Anodized aluminum/UPVC door frames with plain/tinted float glass with suitable finishes as per design, provision for mosquito mesh track</p> <p>Balconies Treated with sound reflecting material in a livable decibels level</p>	<p>KITCHEN Granite platform with stainless steel sink Separate Municipal tap (Manjeera or any other water provided by GHMC along with borewell water) Provision for fixing of water RO system, exhaust fan & chimney Provision for geyser for hot water near the sink</p>	<p>BATHROOMS Vanity type washbasin/countertop in master bedroom EWC with vertical stack flushing system with hydro-pneumatic system Single lever fixture with wall mixer cum shower Provision for geysers in all bathrooms All CP fittings are chrome plated(Grohe, Hans Grohe, Roko or equivalent) Sanitary TOTO, Kohler, Vitra or equivalent</p>	<p>GENERATOR 100% DG set backup with acoustic enclosure & AMF</p> <p>FACILITIES FOR THE PHYSICALLY CHALLENGED Access ramps at all entrances shall be provided for Physically Challenged</p>	<p>CLUBHOUSE & AMENITIES Well designed clubhouse of 10,000 Sft with facilities children play equipment, multi-purpose hall, Separate rooms for association, Swimming pool on terrace</p>	

THE INCREDIBLE LOCATION

Live a privileged life in one-of-kind residential tower at Hinjewadi Phase-1 that integrates Balewadi , Pimpri and Pune Airport.

Pune offers the ultimate lifestyle, vibrant, with every contemporary amenity just around the corner. Here you are close to premium neighborhoods work spaces, night life, entertainment education, city connectivity, ORR connectivity and leisure, a place where dreams really can, and do, come true.

LOCATION MAP (NOT TO SCALE)



THANK YOU

More info @ www.lodhapanache.org.in