

TVS



#MAGNIFIC

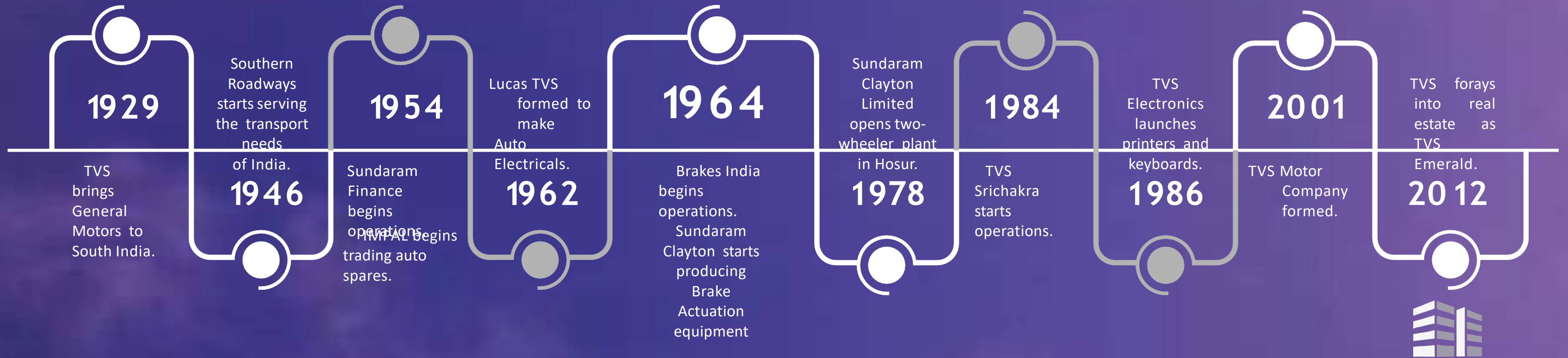


1911

Sri TVSundarambharathi

Launches South India's first Rural Bus Service.

A LEGACY OF TRUST



TVS Emerald receives enthusiastic response for 'Peninsula', a uniquely designed 100% corner-homes project in Manapakkam

Mediawire / Mar 17, 2021, 18:45 IST 👑 24 PTS 🔗 SHARE 🖨️

ARTICLES

 TVS Emerald receives enthusiastic response for...

 U.S. Polo Assn. achieves 80% YoY customer growth on Myntra in the...

 IATA signs up Stanchart for EasyPay facility

 'MSMEs alone cannot meet India's demand for solar pumps'



~ Over 100 apartments booked within 2 days of launch

~ TVS Emerald Peninsula offers 75+ amenities and features

LAUNCH SUCCESS OF PENINSULA

100 apartments sold within 2days of launch

#MAGNIFIC

INTRODUCING 2NEW TOWERS
IN THE BEST SELLING PROJECT OF
TVS EMERALD

#MAGNIFIC



#MAGNIFIC

EXPERIENCE NEW HEIGHTS OF EXUBERANT LIVING

UNVEILING
POOL FACING
PREMIUM 2BHK HOMES AT
#MAGNIFIC



UNVEILING
CLUBHOUSE & GREEN FACING
PREMIUM 3 BHK HOMES AT
#MAGNIFIC



LOCATION HIGHLIGHTS



4 major employment hubs in 5km radius



10 schools in 7km radius



Close to retail, entertainment hubs and places of worship

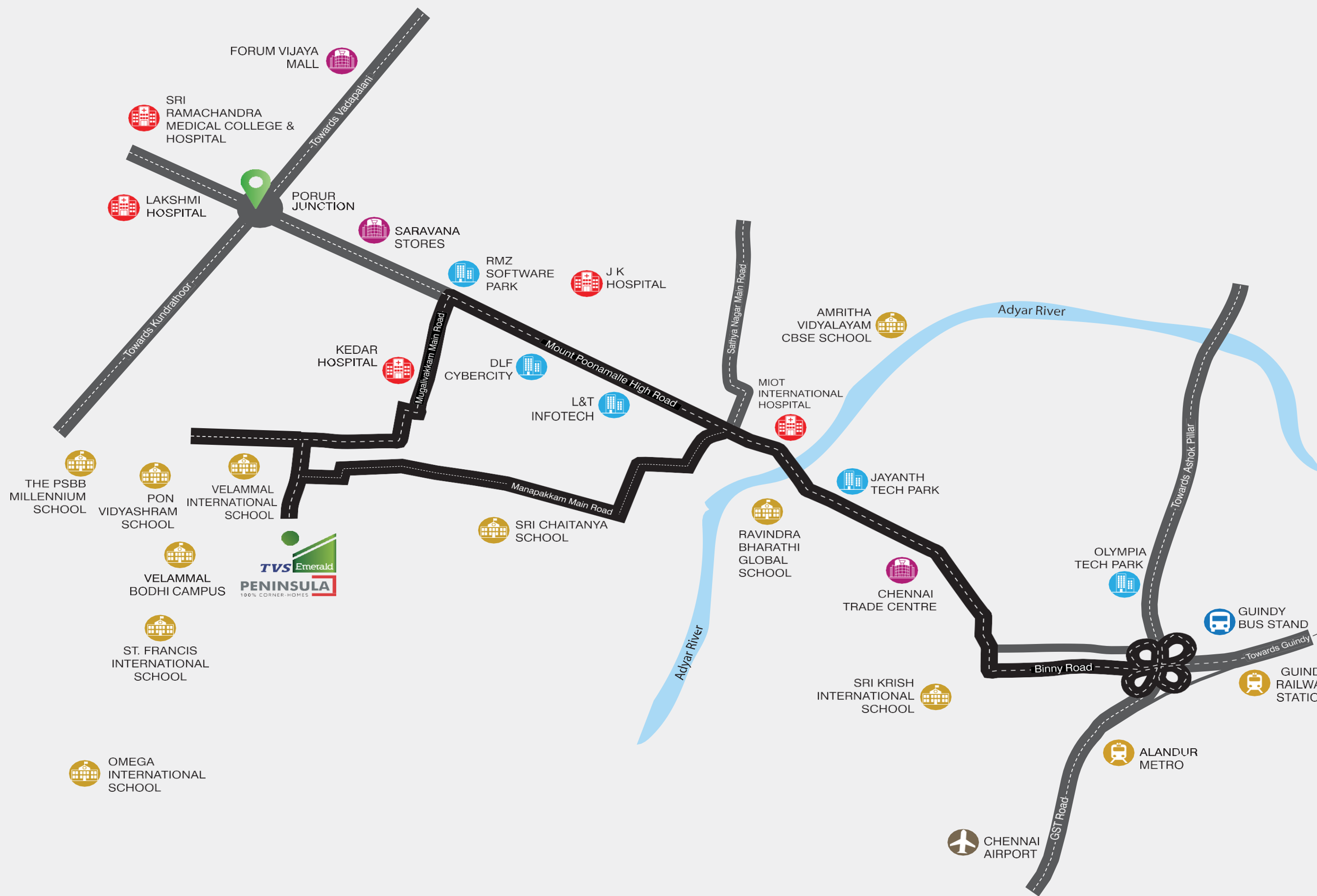


5 major hospitals nearby



7km to Kathipara flyover

#MAGNIFIC



EMPLOYMENT HUBS	
RMZ Software Park	2.5 km
DLF Cybercity	3.9 km
L&T Infotech	4.3 km
Jayanth Tech Park	4.6 km

SCHOOLS	
St. Francis International School	1 km
Velammal International School	1 km
Velammal Bodhi Campus	1.1 km
Sri Chaitanya School	1.8 km
Pon Vidyashram	1.9 km
Omega International School	2.5 km
The PSBB Millennium School	3.1 km
Ravindra Bharathi Global School	3.7 km
Amritha Vidyalayam CBSE School	4.6 km
Sri Krish International School	6.4 km

TRANSPORTATION HUBS	
Porur Junction	3.5 km
Kathipara Junction	7.2 km
Alandur Metro	9.1 km
C.M.B.T	10.1 km
Chennai Airport	12.3 km

HOSPITALS	
Kedar Hospital	1.6 km
Lakshmi Hospital	2.8 km
MIOT International	4.6 km
J K Hospital	4.9 km
SRMC	5.1 km

IMPORTANT LANDMARKS	
Chennai Trade Centre	4 km
Shri Kamakshi Amman Temple (Mangadu)	6.9 km
Forum Vijaya Mall	10.7 km
Phoenix Market City	10.9 km
VR Mall	13.8 km



LOCATION MAP

PRODUCT HIGHLIGHTS

#MAGNIFIC



100 % CORNER HOMES



MAJESTIC VIEWS



SWIMMING POOL



RAIN SHOWER FOR KIDS



CLUBHOUSE



GRAND LOBBY



GYMNASIUM



INDOOR GAMES



HOME THEATRE



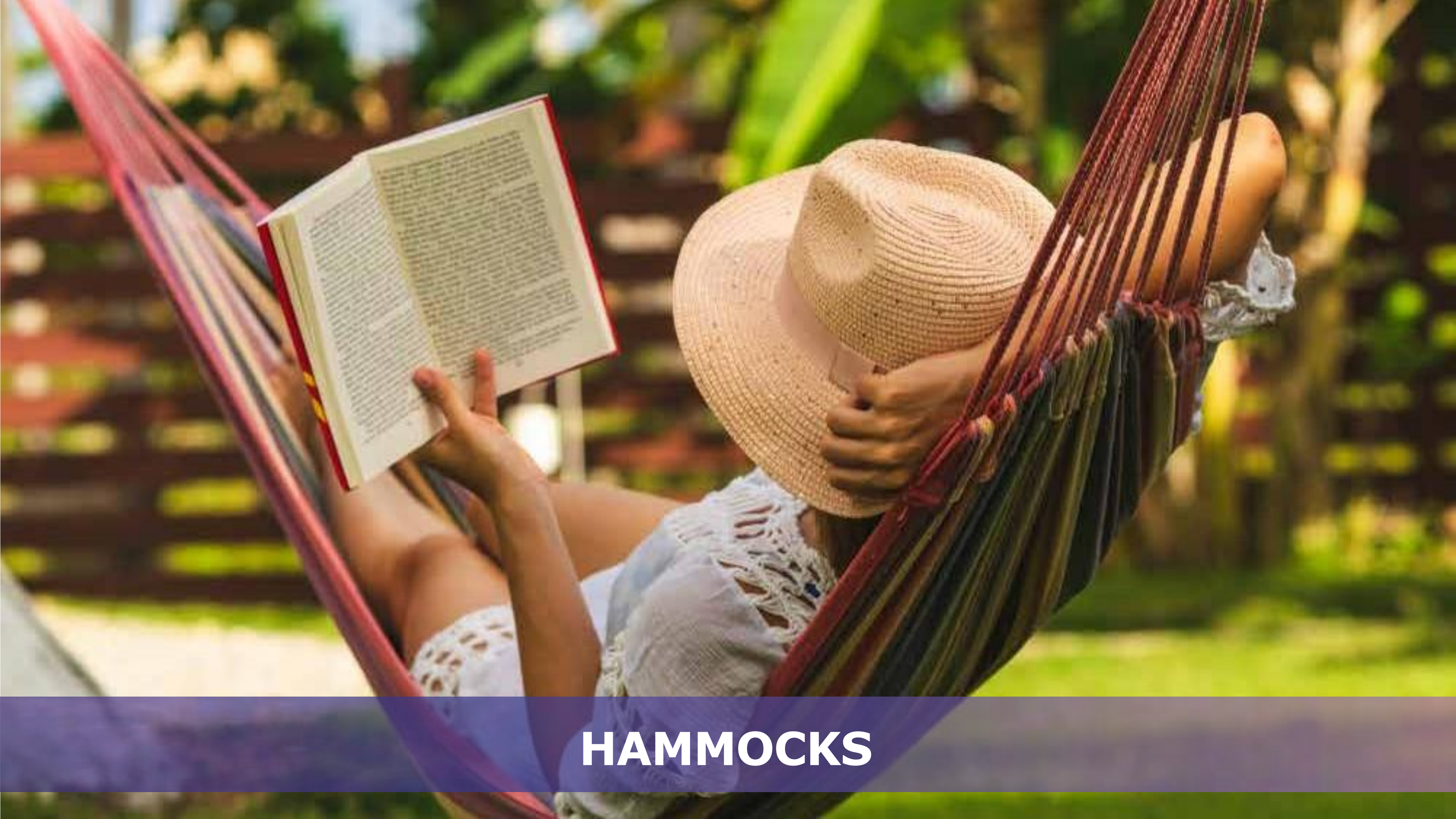
MULTI- PURPOSE HALL



YOGA ROOM



YOGA LAWN



HAMMOCKS



READING PODS

A modern apartment building with a landscaped courtyard. The building is multi-storied with a mix of white and light brown facades. The courtyard in the foreground features a central fountain with a statue of a person holding a staff, surrounded by greenery and a paved walkway. A sign for 'DEWISULA' is visible in the background.

2BHK 2T Units

Unit options- 2BHK 2T

Unit 1

Unit 2

Unit 1

Unit 2



Unit 3

Unit 4

Unit 3

Unit 4

Block G

Block H

Block G

- G11 to G71
- G12 to G72

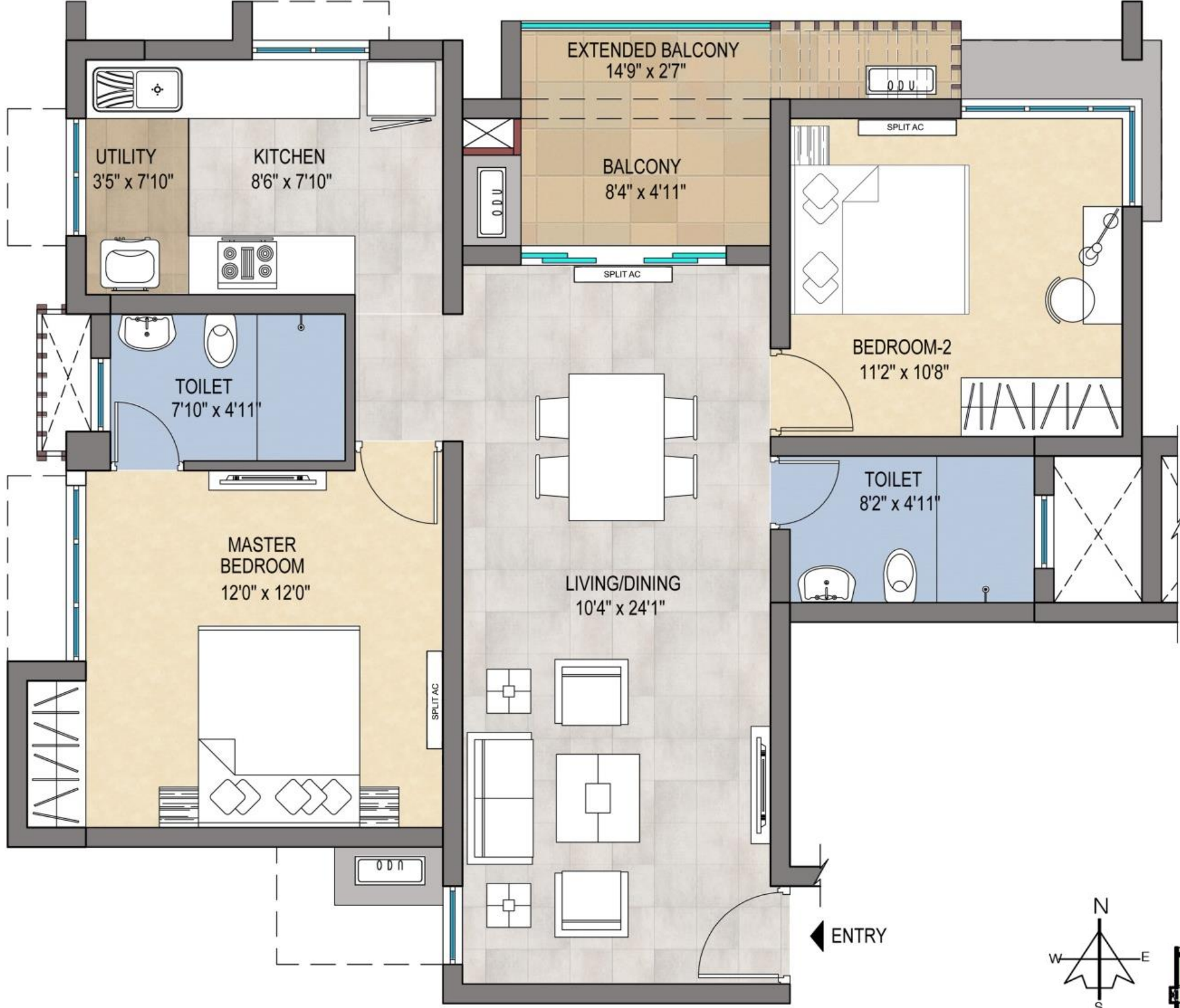
Block H

- H11 to H71
- H12 to H72

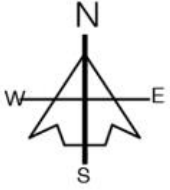


First & Fourth floor plan

Unit no: G11,H11 & G41,H41



Type	2BHK2T	
Unit Nos	G11,H11 & G41,H41	
Facing	East	
Area Details		Sqft
RERA Carpet Area	A	747
RERA Balcony Area	B	83
Usable Carpet Area	A+B	830
Common Area(External wall included)	C	404
Saleable Area	A+B+C	1234
UDS Area		494



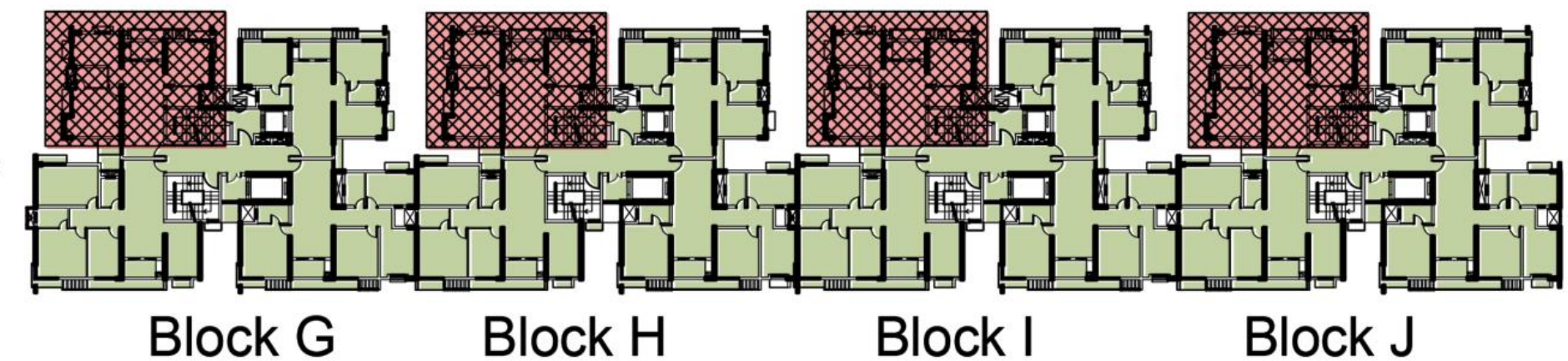
Block G Block H Block I Block J

Second & Fifth Floor

Unit no: G21,H21 & G51,H51



Type	2BHK2T	
Unit Nos	G21,H21 & G51,H51	
Facing	East	
Area Details		
RERA Carpet Area	A	747
RERA Balcony Area	B	83
Usable Carpet Area	A+B	830
Common Area(External wall included)	C	404
Saleable Area	A+B+C	1234
UDS Area		494

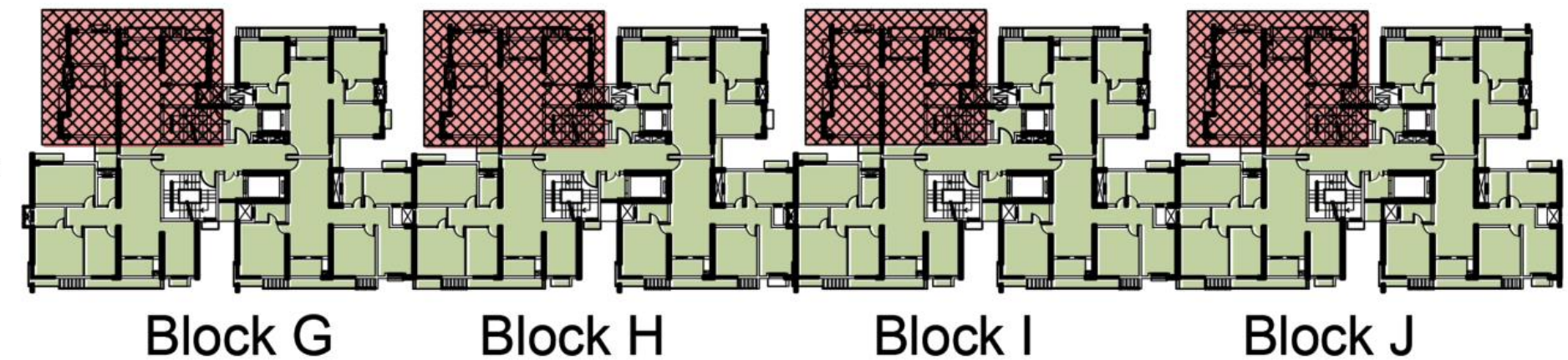
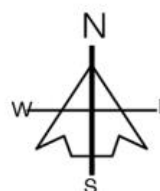


Third & Sixth Floor

Unit no: G31,H31 & G61,H61



Type	2BHK2T	
Unit Nos	G31,H31 & G61,H61	
Facing	East	
Area Details		
RERA Carpet Area	A	747
RERA Balcony Area	B	83
Usable Carpet Area	A+B	830
Common Area(External wall included)	C	404
Saleable Area	A+B+C	1234
UDS Area		494

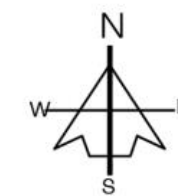


Seventh Floor

Unit no: G71,H71



Type	2BHK2T	
Unit Nos	G71,H71	
Facing	East	
Area Details		Sqft
RERA Carpet Area	A	747
RERA Balcony Area	B	83
Usable Carpet Area	A+B	830
Common Area(External wall included)	C	404
Saleable Area	A+B+C	1234
UDS Area		494



Block G

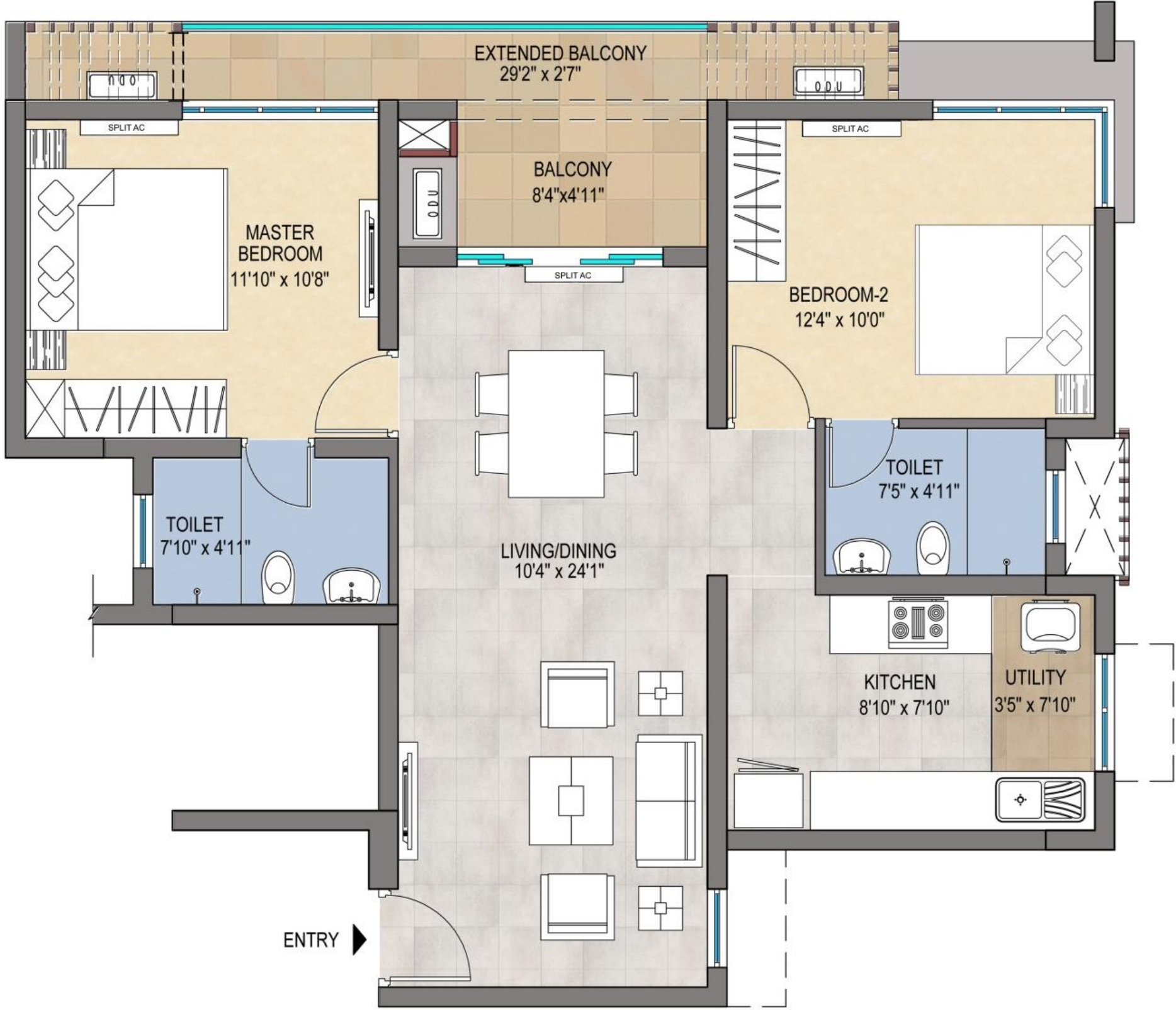
Block H

Block I

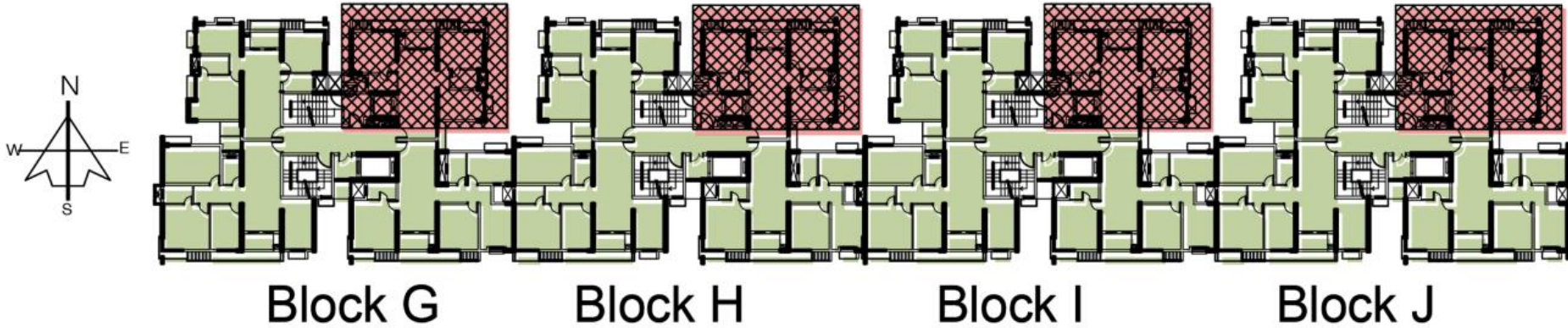
Block J

First & Fourth floor plan

Unit no: G12,H12 & G42,H42



Type	2BHK2T	
Unit Nos	G12,H12, & G42,H42	
Facing	West	
Area Details		
RERA Carpet Area	A	720
RERA Balcony Area	B	116
Usable Carpet Area	A+B	836
Common Area(External wall included)	C	407
Saleable Area	A+B+C	1243
UDS Area		497

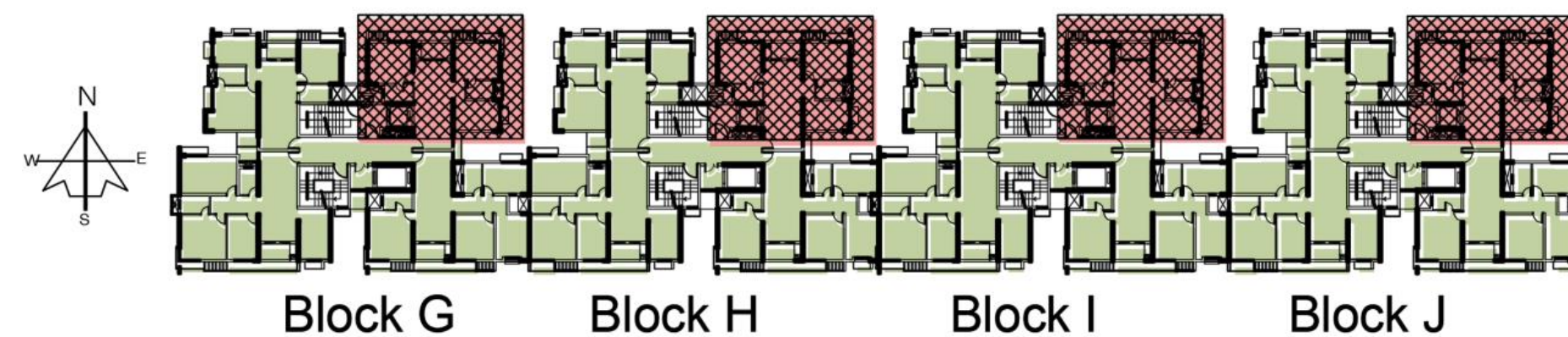


Second & Fifth Floor

Unit no: G22,H22 & G52,H52



Type	2BHK2T	
Unit Nos	G22,H22 & G52,H52	
Facing	West	
Area Details		Sqft
RERA Carpet Area	A	720
RERA Balcony Area	B	116
Usable Carpet Area	A+B	836
Common Area(External wall included)	C	407
Saleable Area	A+B+C	1243
UDS Area		497

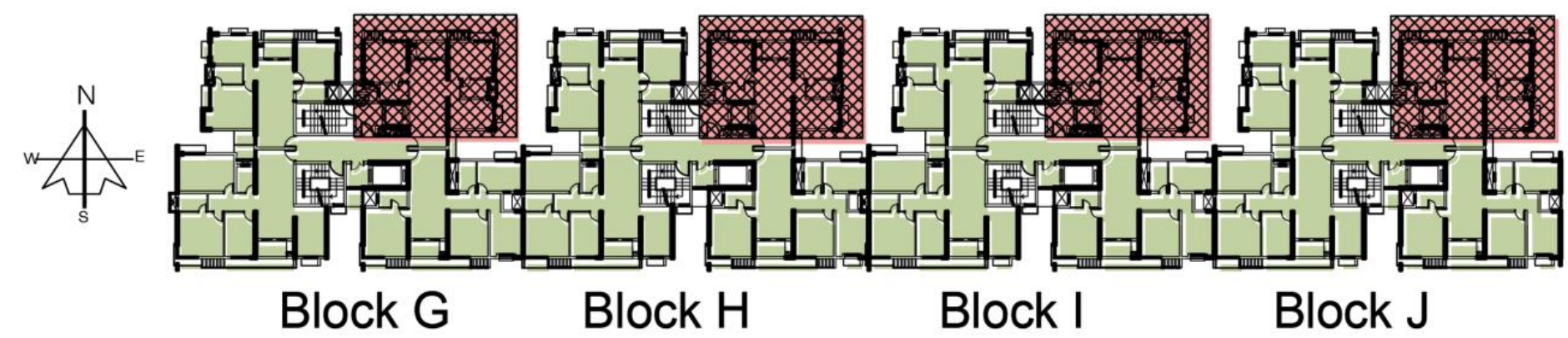


Third & Sixth Floor

Unit no: G32,H32 & G62,H62

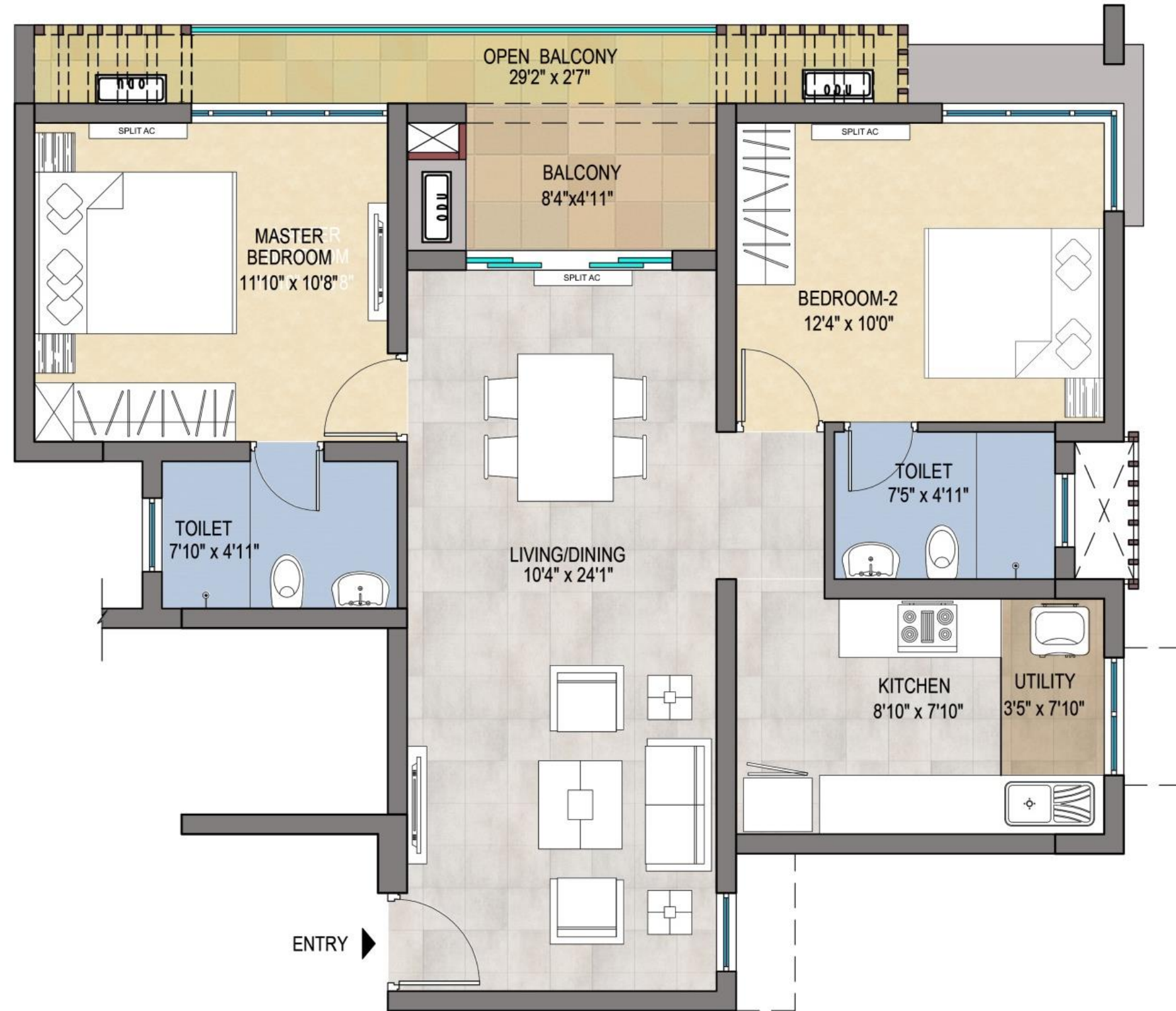


Type	2BHK2T	
Unit Nos	G32,H32 & G62,H62	
Facing	West	
Area Details		
RERA Carpet Area	A	720
RERA Balcony Area	B	68
Usable Carpet Area	A+B	788
Common Area(External wall included)	C	385
Saleable Area	A+B+C	1173
UDS Area		469

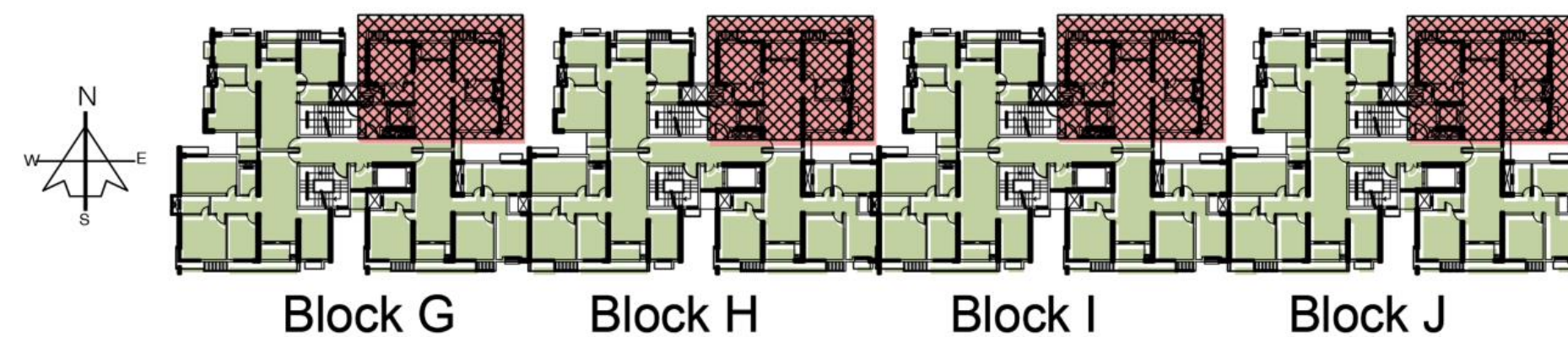


Seventh Floor

Unit no: G72,H72



Type	2BHK2T	
Unit Nos	G72,H72	
Facing	West	
Area Details		
RERA Carpet Area	A	720
RERA Balcony Area	B	116
Usable Carpet Area	A+B	836
Common Area(External wall included)	C	407
Saleable Area	A+B+C	1243
UDS Area		497





3BHK 2T Units

Unit options- 3BHK 2T

Unit 1

Unit 2

Unit 1

Unit 2

Block G

- G13 to G73
- G14 to G74



Unit 3

Unit 4

Unit 3

Unit 4

Block H

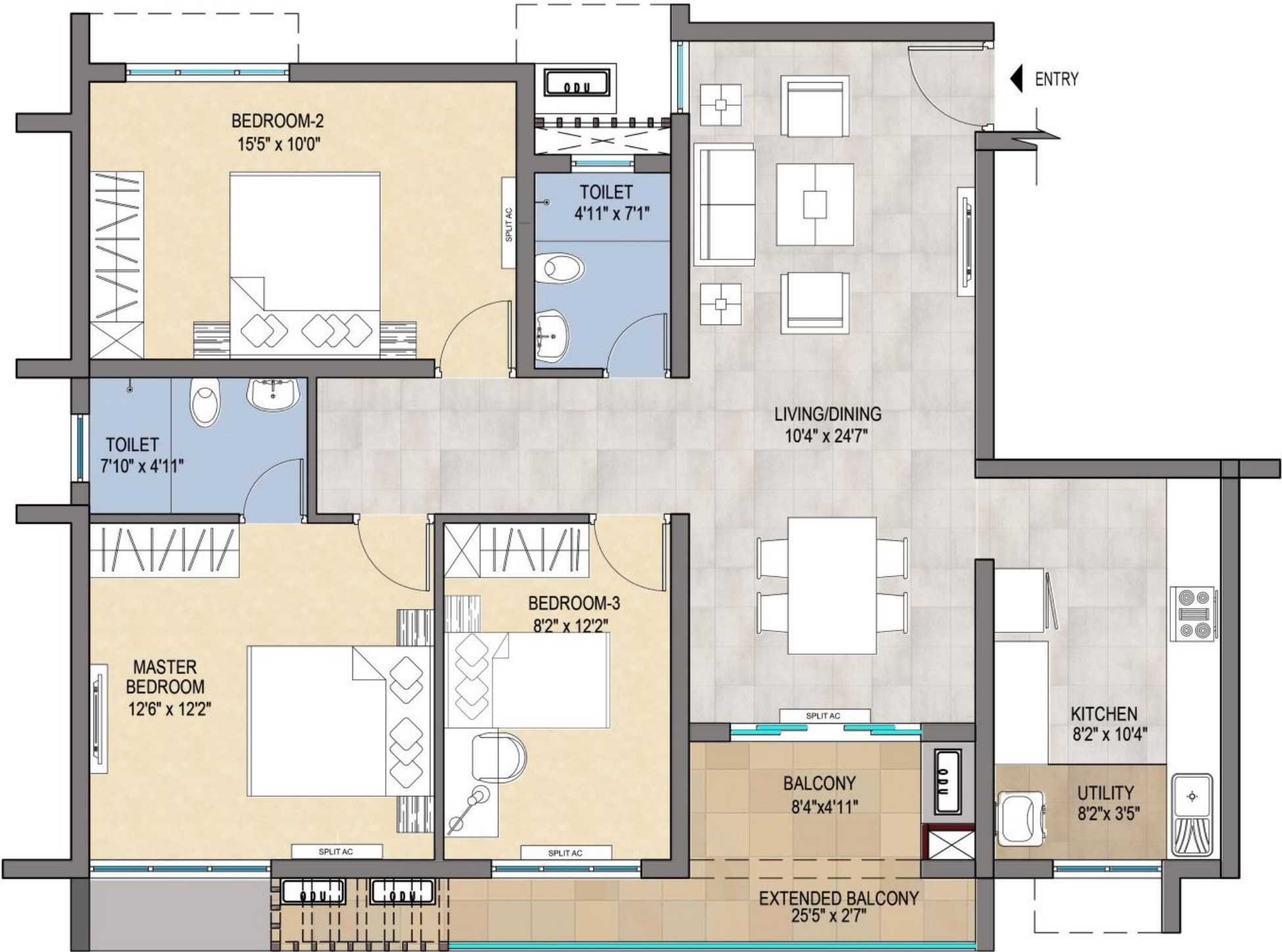
- H13 to H73
- H14 to H74

Block G

Block H

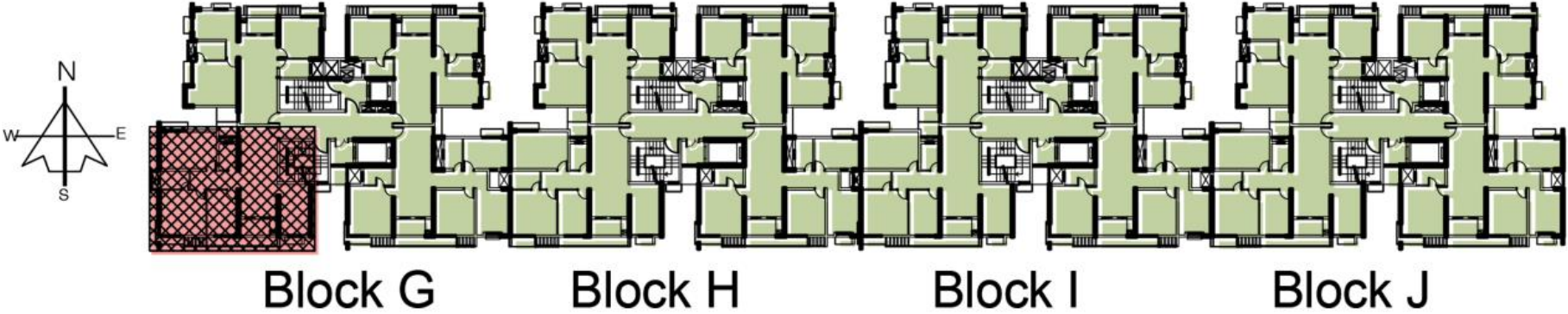


First & Fourth floor plan



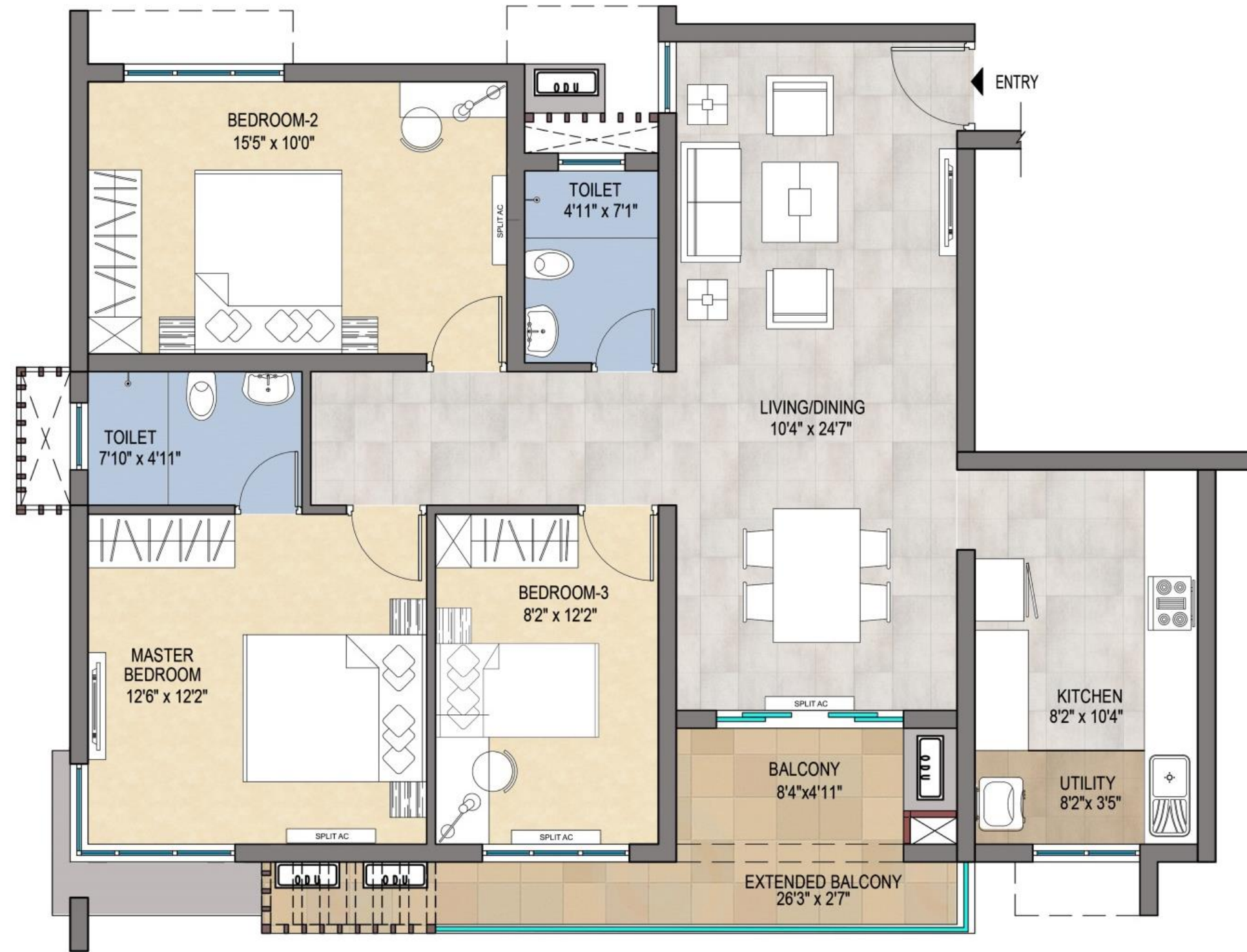
Type	3BHK2T	
Unit Nos	G13,G43	
Facing	East	
Area Details		
RERA Carpet Area	A	957
RERA Balcony Area	B	107
Usable Carpet Area	A+B	1064
Common Area(External wall included)	C	519
Saleable Area	A+B+C	1583
UDS Area		633

Unit no: G13,G43

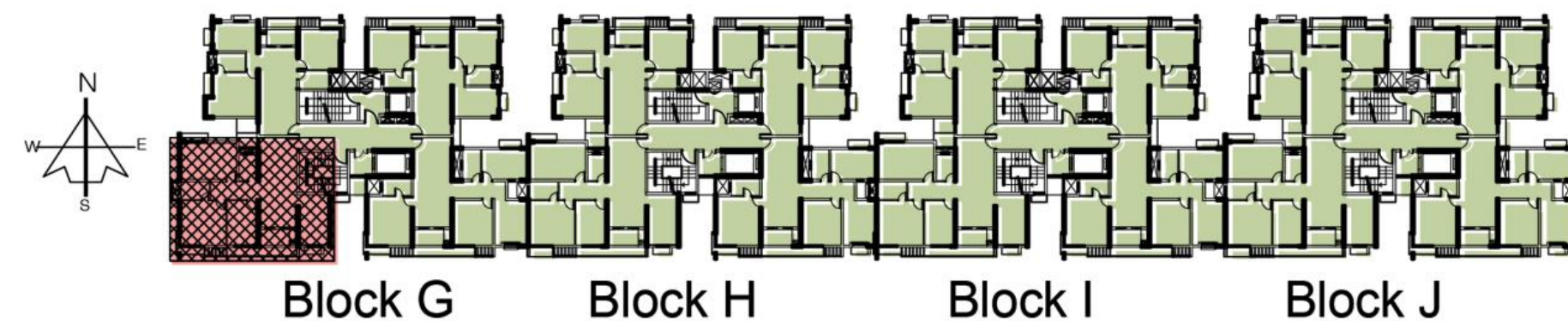


Second & Fifth Floor

Unit no: G23,G53

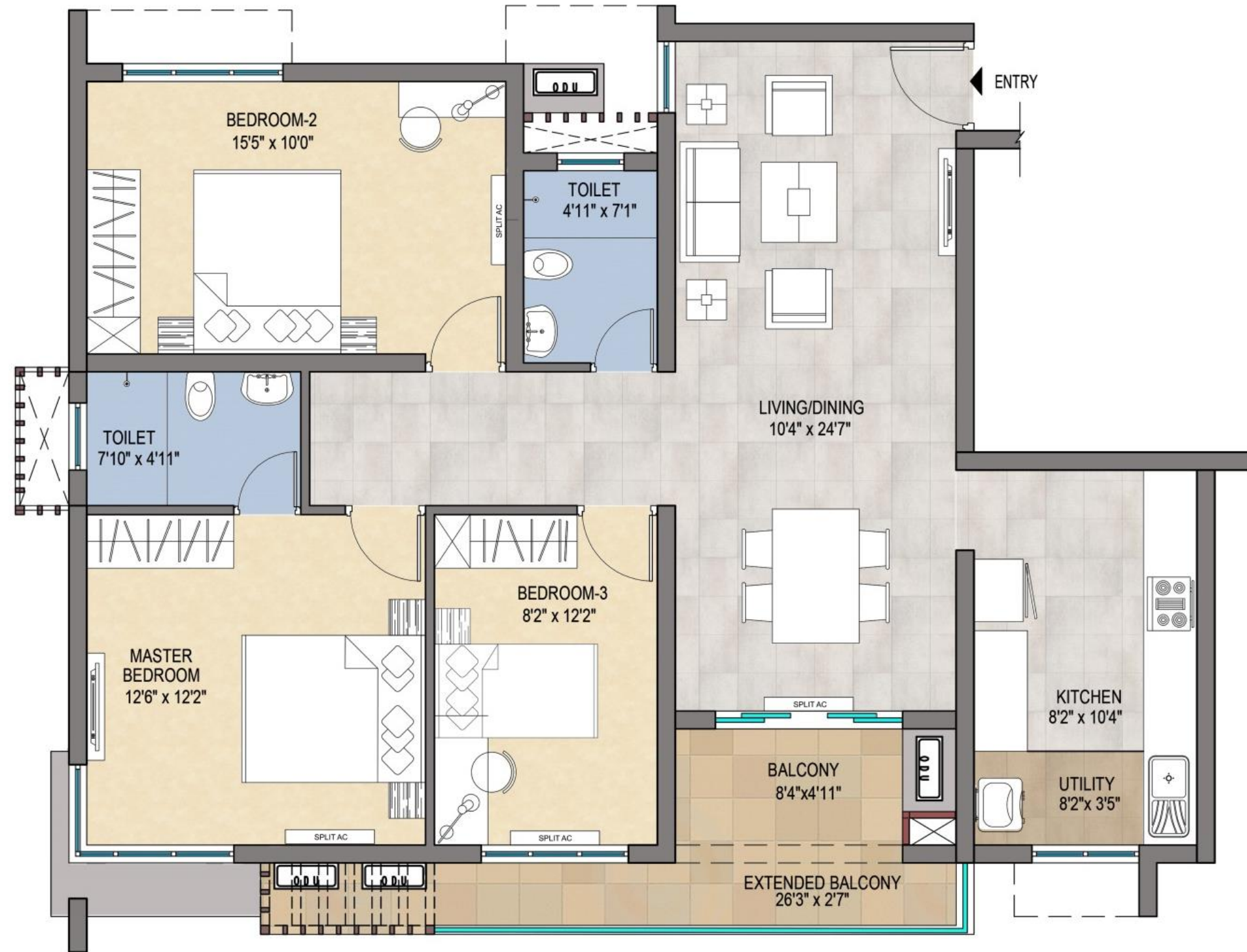


Type	3BHK2T	
Unit Nos	G23,G53	
Facing	East	
Area Details		
RERA Carpet Area	A	957
RERA Balcony Area	B	107
Usable Carpet Area	A+B	1064
Common Area(External wall included)	C	519
Saleable Area	A+B+C	1583
UDS Area		633

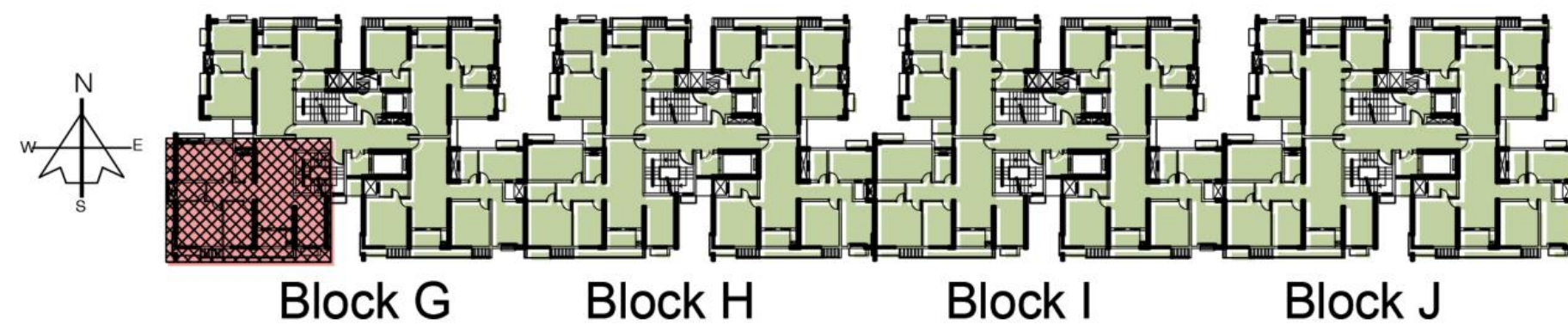


Third & Sixth Floor

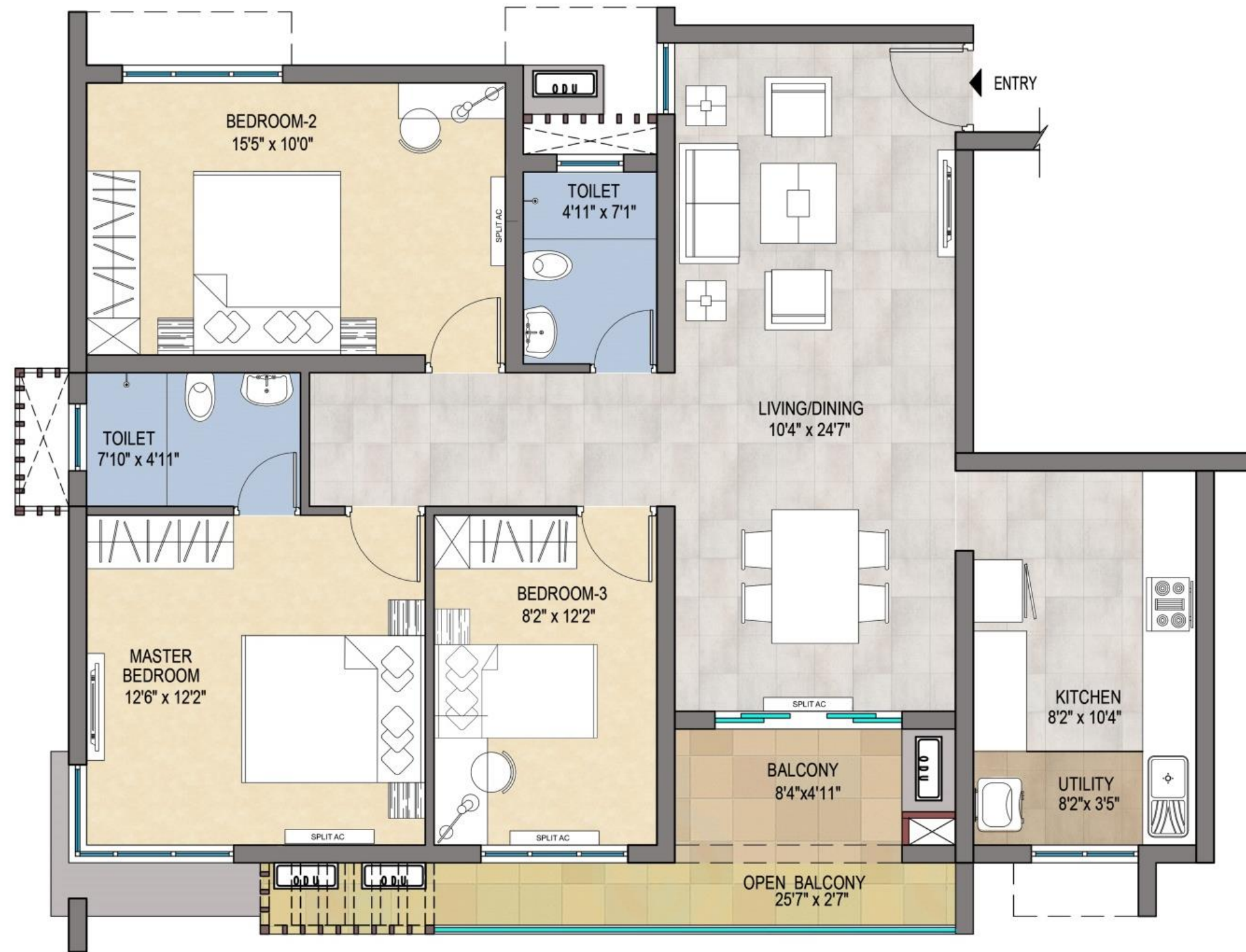
Unit no: G33,G63



Type	3BHK2T	
Unit Nos	G33,G63	
Facing	East	
Area Details		
RERA Carpet Area	A	957
RERA Balcony Area	B	107
Usable Carpet Area	A+B	1064
Common Area(External wall included)	C	519
Saleable Area	A+B+C	1583
UDS Area		633

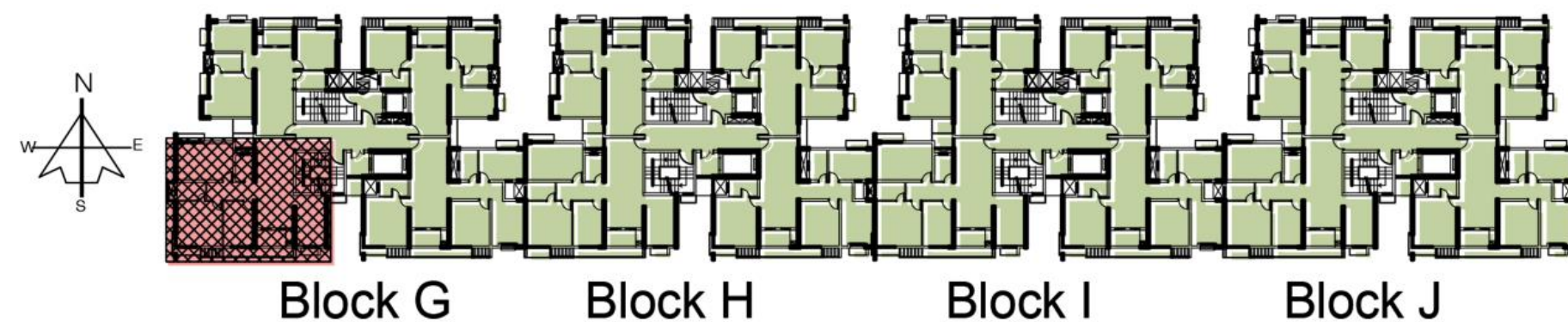


Seventh Floor



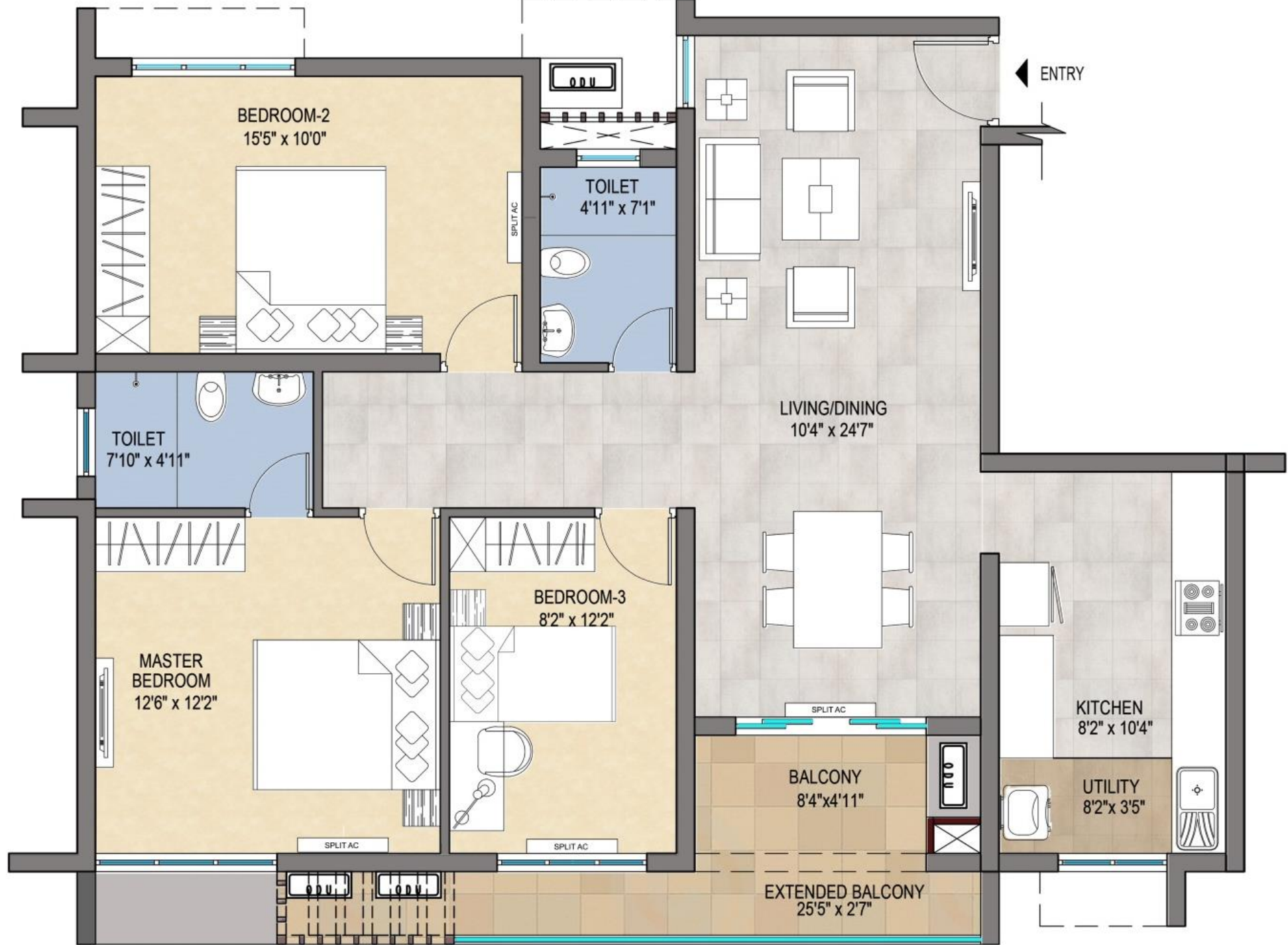
Type	3BHK2T	
Unit Nos	G73	
Facing	East	
Area Details		
RERA Carpet Area	A	957
RERA Balcony Area	B	107
Usable Carpet Area	A+B	1064
Common Area(External wall included)	C	519
Saleable Area	A+B+C	1583
UDS Area		633

Unit no: G73

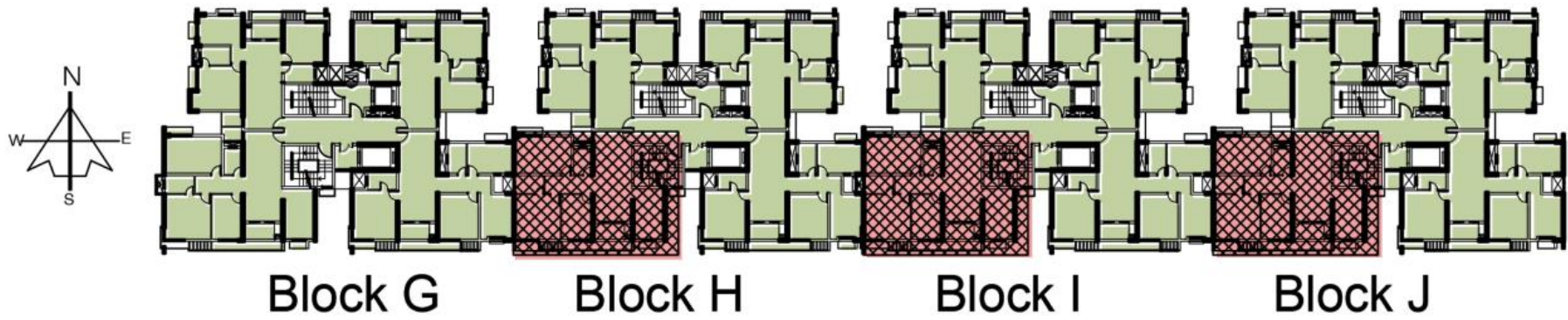


First & Fourth floor plan

Unit no: H13 & H43

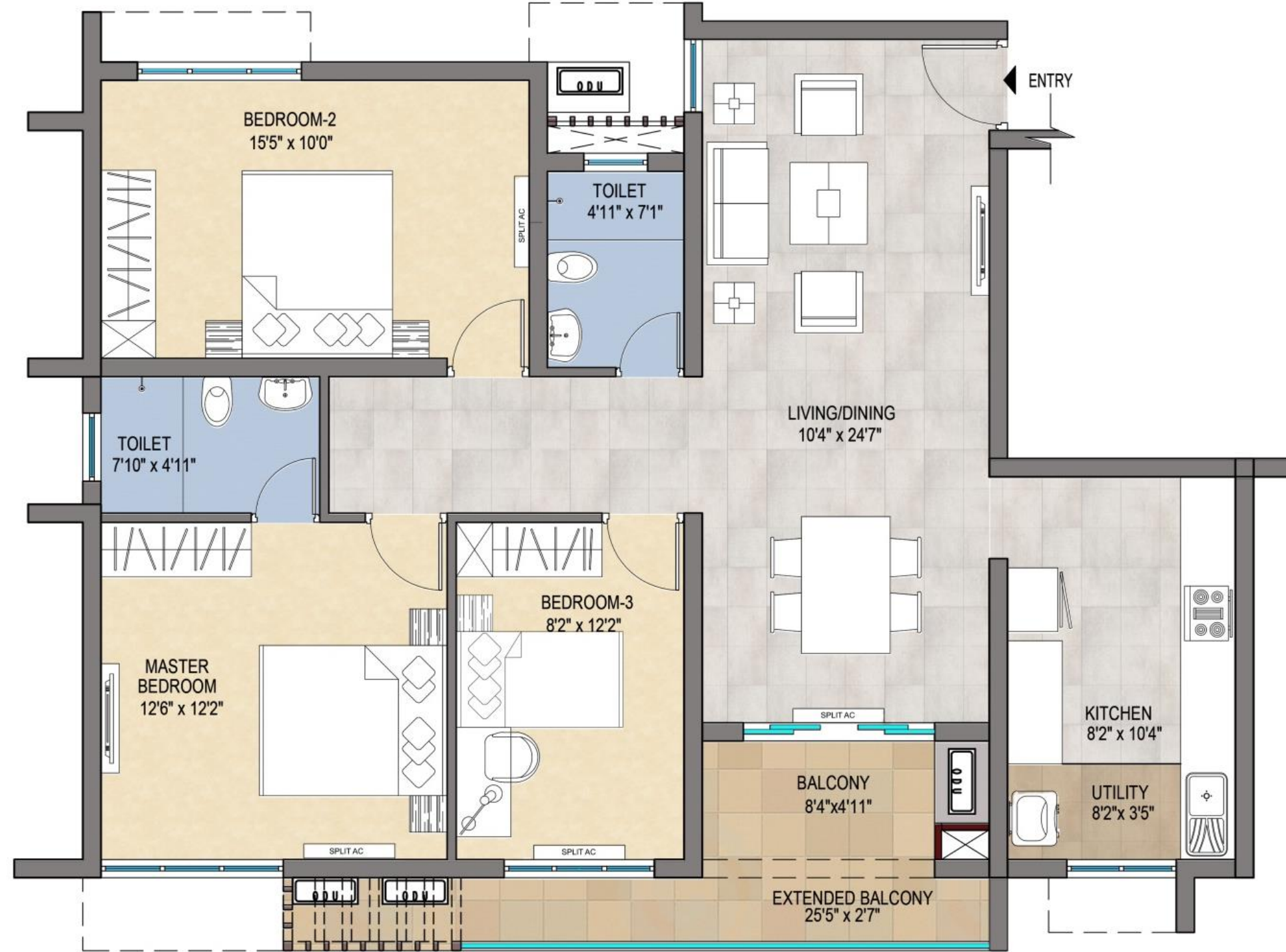


Type	3BHK2T	
Unit Nos	H13 & H43	
Facing	East	
Area Details		
RERA Carpet Area	A	957
RERA Balcony Area	B	107
Usable Carpet Area	A+B	1064
Common Area(External wall included)	C	519
Saleable Area	A+B+C	1583
UDS Area		633

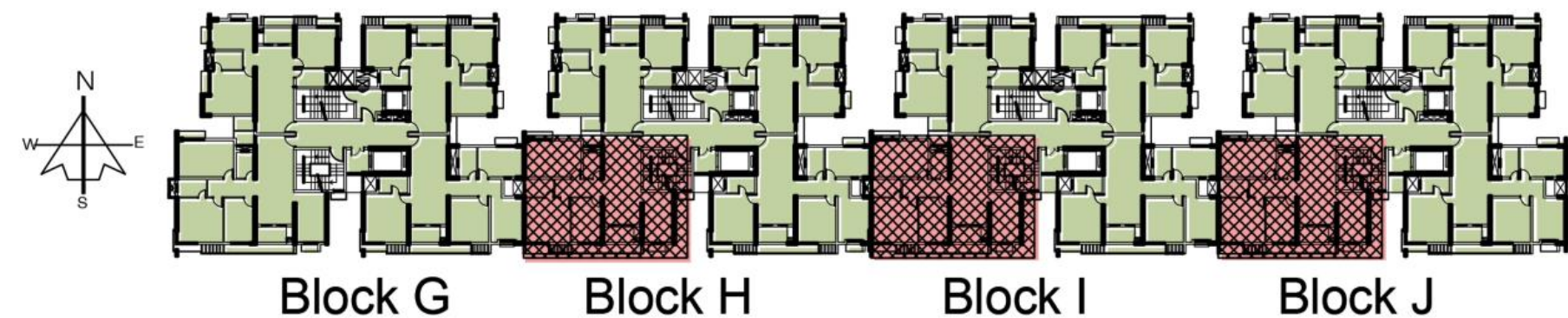


Second & Fifth Floor

Unit no: H23 & H53

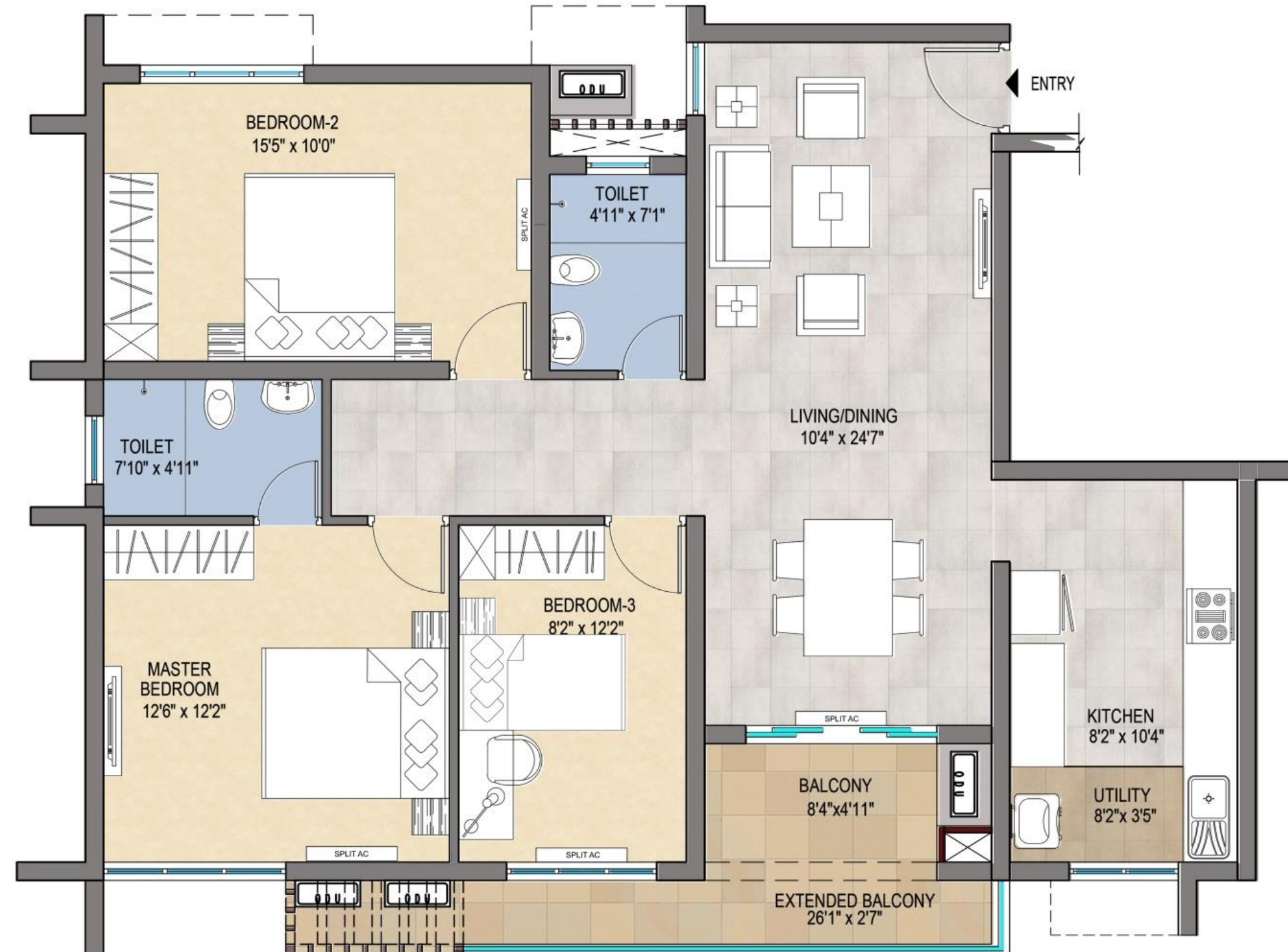


Type	3BHK2T	
Unit Nos	H23 & H53	
Facing	East	
Area Details		Sqft
RERA Carpet Area	A	957
RERA Balcony Area	B	107
Usable Carpet Area	A+B	1064
Common Area(External wall included)	C	519
Saleable Area	A+B+C	1583
UDS Area		633



Third & Sixth Floor

Unit no: H33 & H63

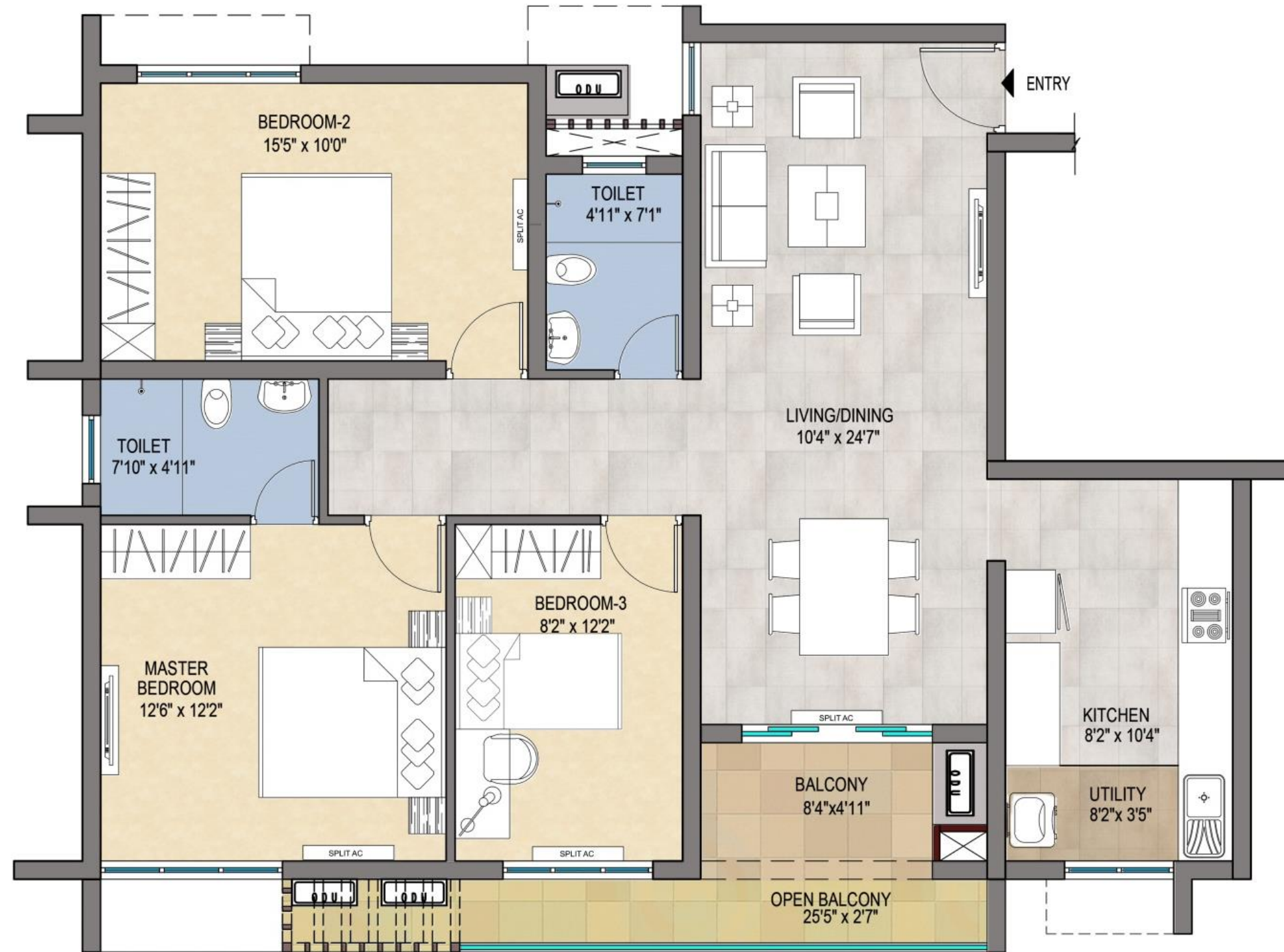


Type	3BHK2T	
Unit Nos	H33 & H63	
Facing	East	
Area Details		
RERA Carpet Area	A	957
RERA Balcony Area	B	107
Usable Carpet Area	A+B	1064
Common Area(External wall included)	C	519
Saleable Area	A+B+C	1583
UDS Area		633



Seventh Floor

Unit no: H73

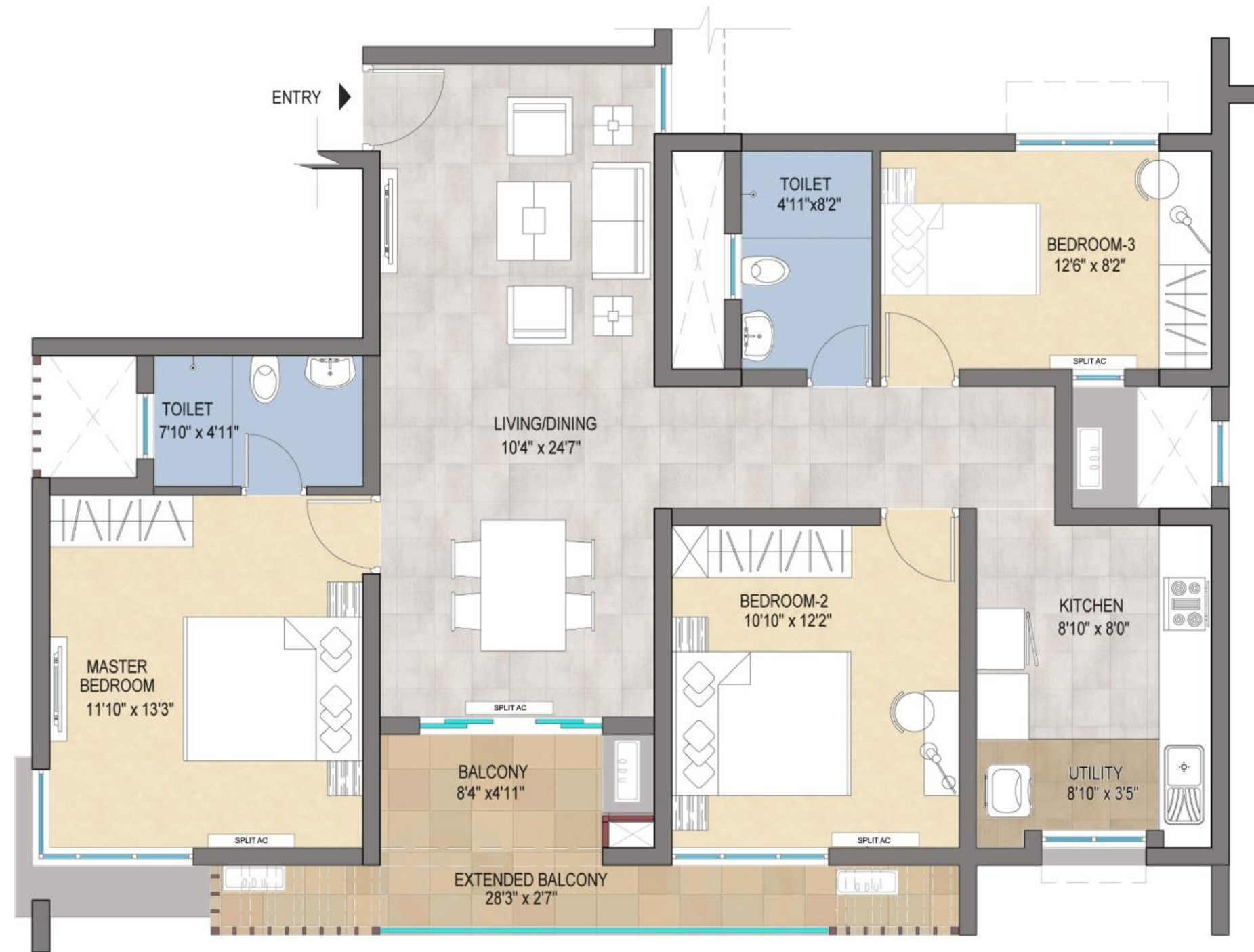


Type	3BHK2T	
Unit Nos	H73	
Facing	East	
Area Details		
RERA Carpet Area	A	957
RERA Balcony Area	B	107
Usable Carpet Area	A+B	1064
Common Area(External wall included)	C	519
Saleable Area	A+B+C	1583
UDS Area		633

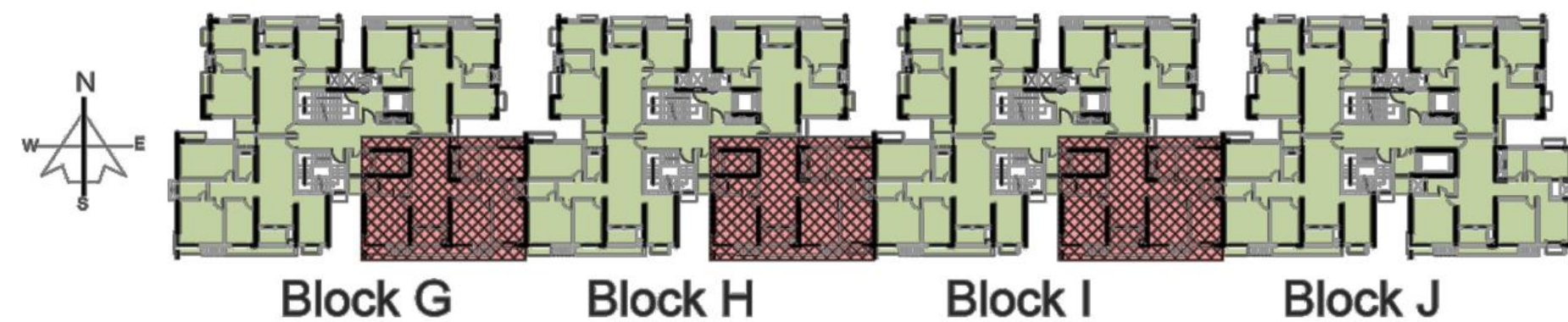


First & Fourth floor plan

Unit no: G14,H14 & G44,H44

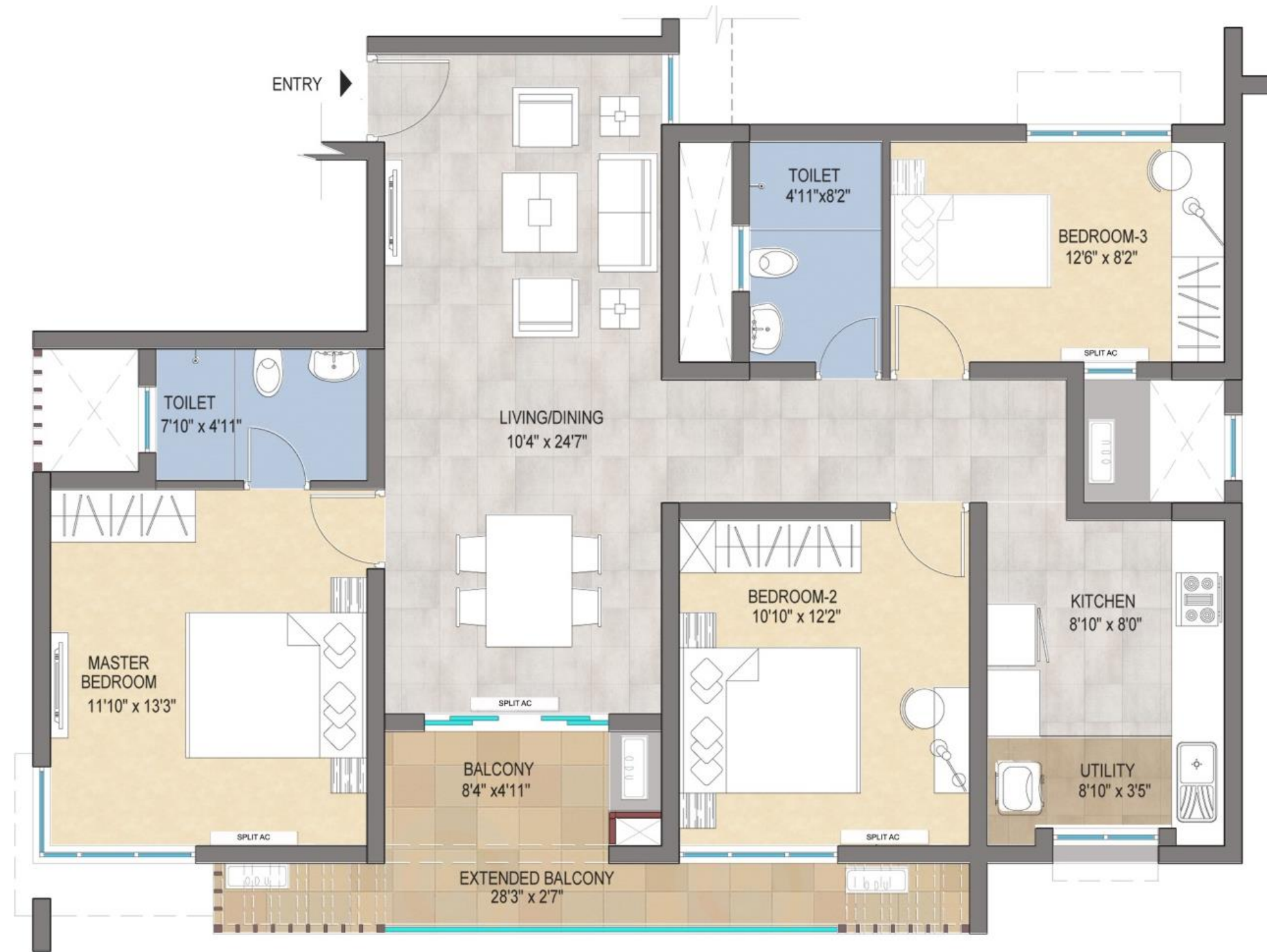


Type	3BHK2T	
Unit Nos	G14,H14 & G44,H44	
Facing	West	
Area Details		
RERA Carpet Area	A	942
RERA Balcony Area	B	113
Usable Carpet Area	A+B	1055
Common Area(External wall included)	C	515
Saleable Area	A+B+C	1570
UDS Area		628



Second & Fifth Floor

Unit no: G24,H24 & G54,H54

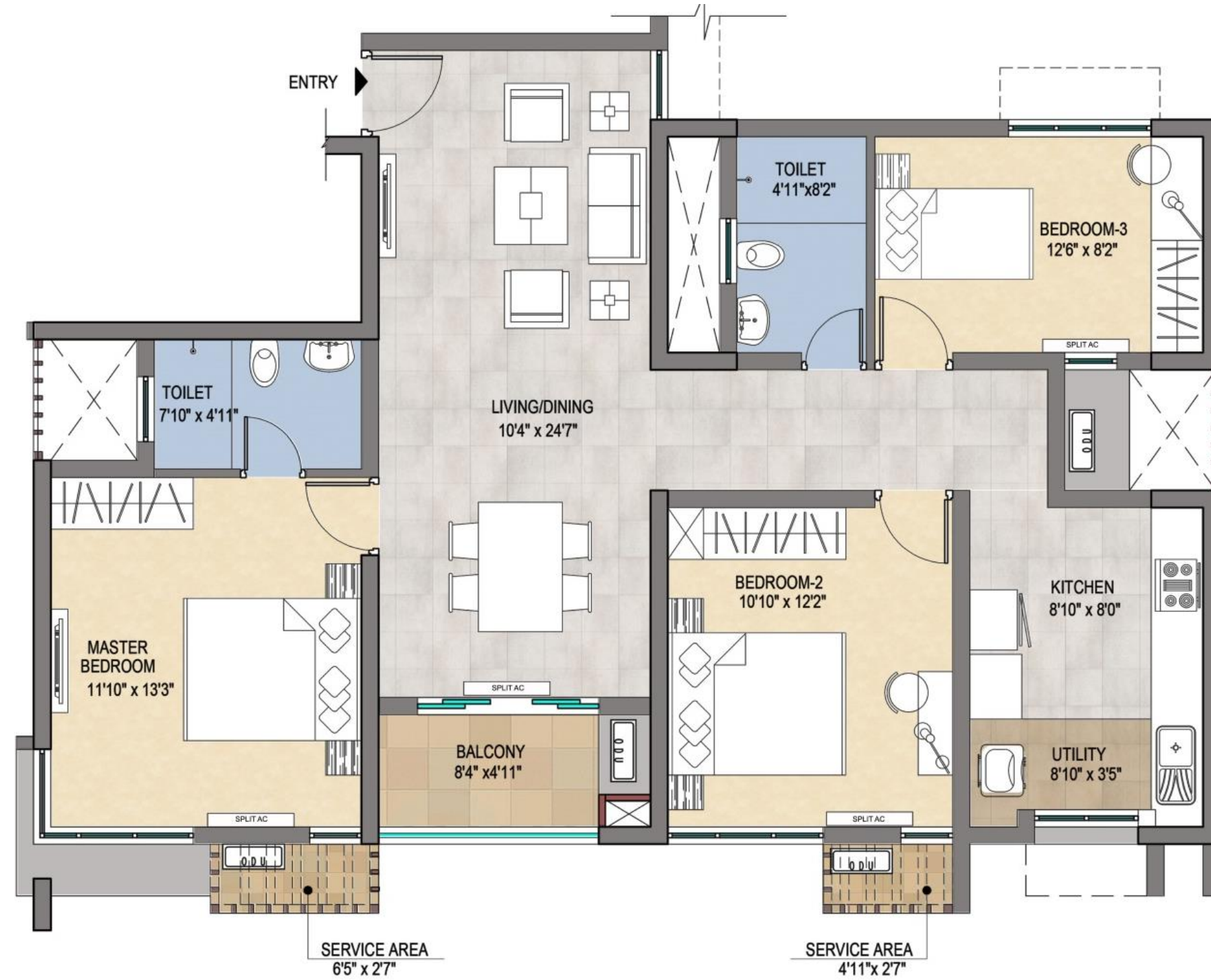


Type	3BHK2T	
Unit Nos	G24,H24 & G54,H54	
Facing	West	
Area Details		Sqft
RERA Carpet Area	A	942
RERA Balcony Area	B	113
Usable Carpet Area	A+B	1055
Common Area(External wall included)	C	515
Saleable Area	A+B+C	1570
UDS Area		628

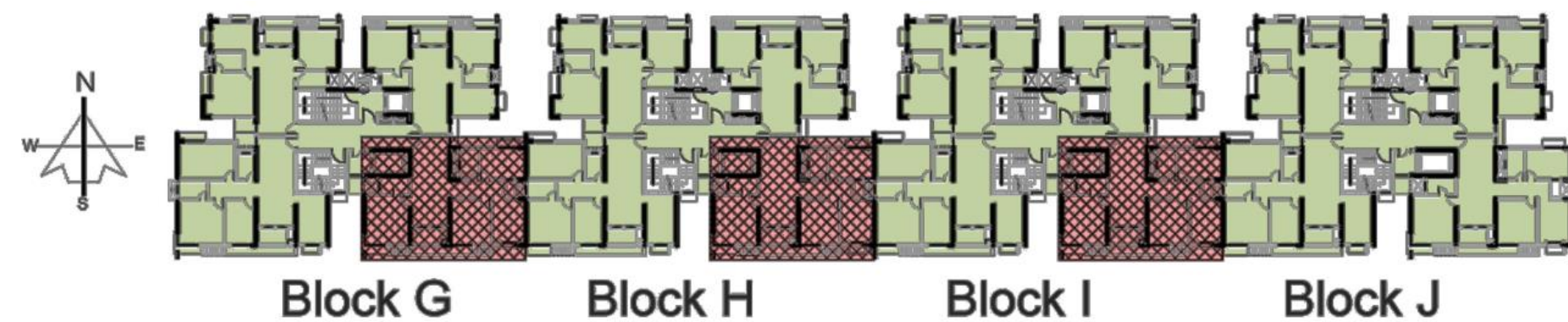


Third & Sixth Floor

Unit no: G33,H33 & G63,H63

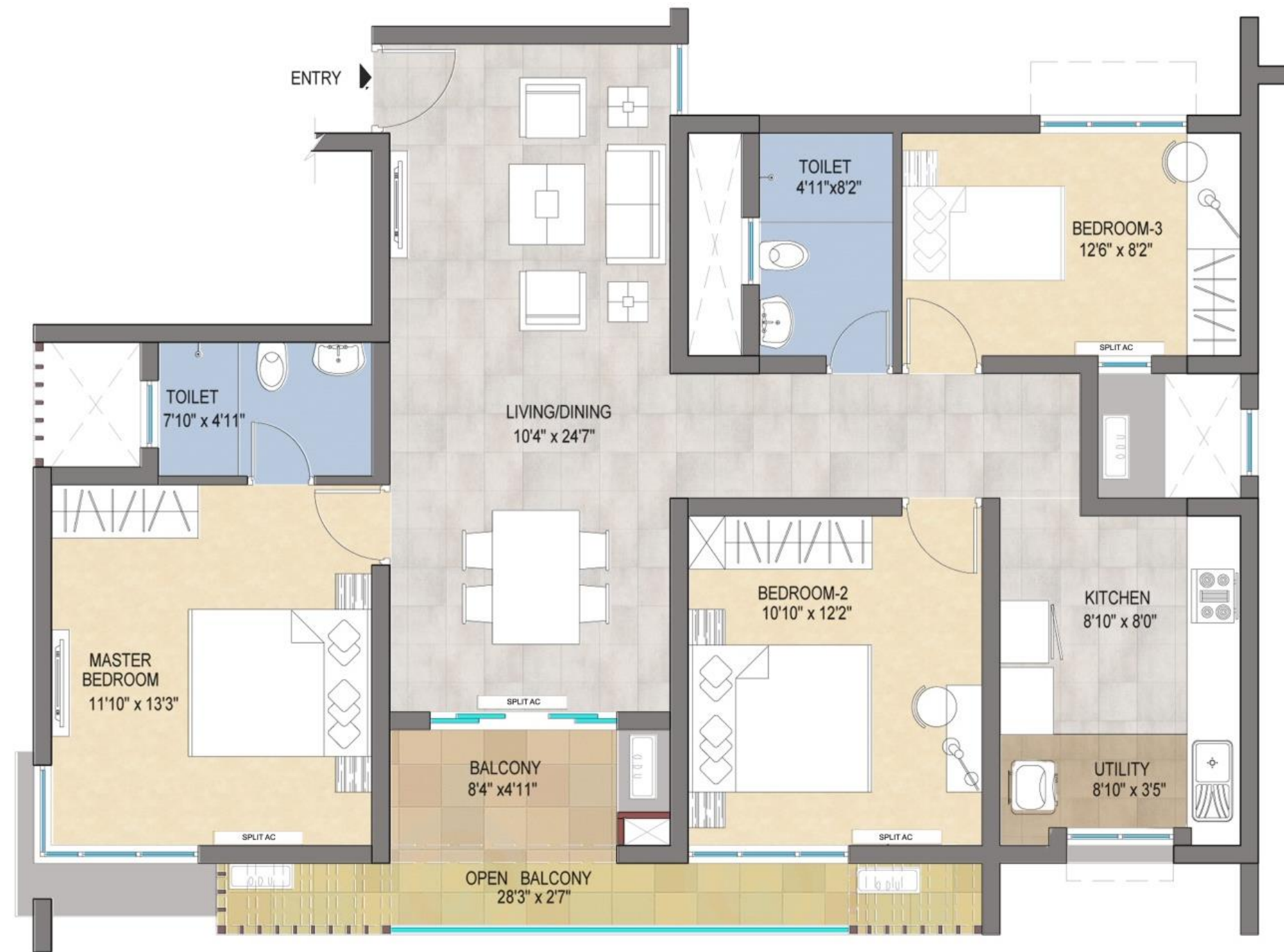


Type	3BHK2T	
Unit Nos	G33,H33 & G63,H63	
Facing	West	
Area Details		
RERA Carpet Area	A	942
RERA Balcony Area	B	68
Usable Carpet Area	A+B	1010
Common Area(External wall included)	C	492
Saleable Area	A+B+C	1502
UDS Area		601

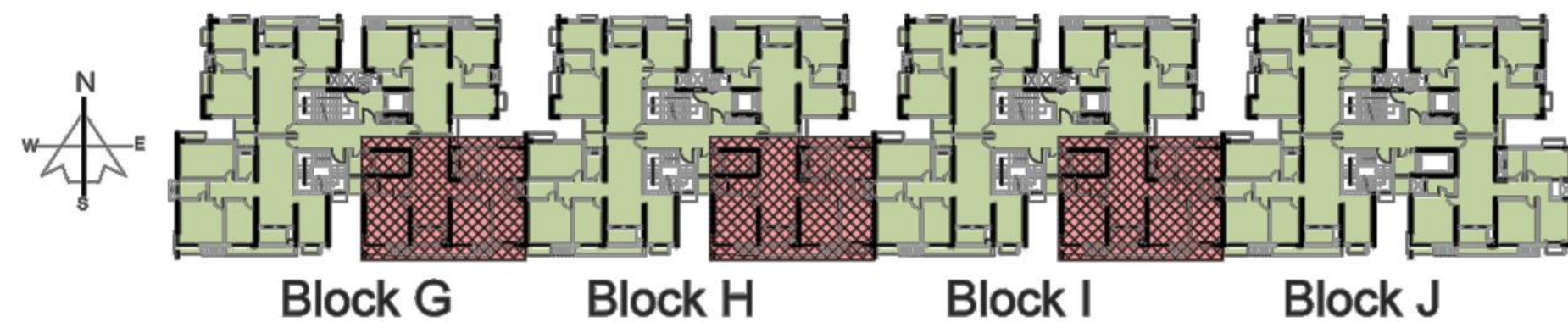


Seventh Floor

Unit no: G73,H73



Type	3BHK2T	
Unit Nos	G73,H73	
Facing	West	
Area Details		
RERA Carpet Area	A	942
RERA Balcony Area	B	113
Usable Carpet Area	A+B	1055
Common Area(External wall included)	C	515
Saleable Area	A+B+C	1570
UDS Area		628



PRICING

Typology	Saleable Area (in Sq.Ft.)	Maximum Price* (in Rs.)
2 BHK 2T	1173 - 1243	₹94 Lakh
3 BHK 2T	1502 - 1583	₹116 Lakh

• Additionally advance maintenance charges, corpus fund, GST, stamp duty & registration charges are not included in the price and are payable as may be mentioned in the definitive agreements.

Eol	Eol Amount
Standard	₹1 Lakh
Elite	₹5 Lakh (Non-Refundable)

THANK YOU!