

PLANS

Site Address : Lodha The Park, Opp. Hard Rock Cafe, Worli, Mumbai.
Website Address : www.lodha-thepark.com | Contact No.: 022 48972033

 **LODHA**

MahaRERA Registration No. P51900001339

THE PARK
A RICHER LIFE

THE PARK
A RICHER LIFE

THE PARK MASTER PLAN



LEGEND

- 1 KIDS PLAY AREA
- 2 TREE HOUSE
- 3 SKATE PARK
- 4 ROCKCLIMBING WALL
- 5 TOWER 3
- 6 JOGGING PATH
- 7 TOWER 3 & 4 ROP-OFF
- 8 TOWER 4
- 9 PICNIC & BBQ AREA
- 10 PETS GARDEN
- 11 REFLECTION AVENUE
- 12 ENTRANCE PLAZA
- 13 ATHLETIC TRACK
- 14 CRICKET GROUND
- 15 OUTDOOR CINEMA
- 16 PAVILION
- 17 FUNCTION LAWN
- 18 SEATOUT AREA
- 19 OUTDOOR LOUNGE
- 20 TOWER 2
- 21 GAME COURTS
- 22 30M LAP POOL
- 23 TODDLER POOL
- 24 KIDS POOL
- 25 INDOOR POOL
- 26 RAIN POOL
- 27 POOL BED
- 28 POOL DECK
- 29 FAMILY POOL
- 30 HAMAM
- 31 PICNIC ISLAND
- 32 REFLEXOLOGY GARDEN
- 33 TOWER 1 & 2 DROP-OFF
- 34 READING AREA
- 35 OUTDOOR CHESS
- 36 TOWER 5
- 37 LOUNGE
- 38 TOWER 5 & 6 DROP-OFF
- 39 TOWER 6
- 40 RELAXING AREA
- 41 MINI GOLF
- 42 HERB & SPICE GARDEN
- 43 FRAGRANCE GARDEN
- 44 GANESHA TEMPLE
- 45 MEDITATION COURT
- 46 FRUIT ORCHARD
- 47 TEA PAVILION
- 48 VEGETABLE GARDEN
- 49 TOWNHOUSES
- 50 RETAIL AT GROUND LEVEL
- 51 SENIOR CITIZENS GYM
- 52 NATURE GARDEN
- 53 TOWN HOUSE POOL
- 54 TOWER 1
- 55 COMMUNAL PAVILION

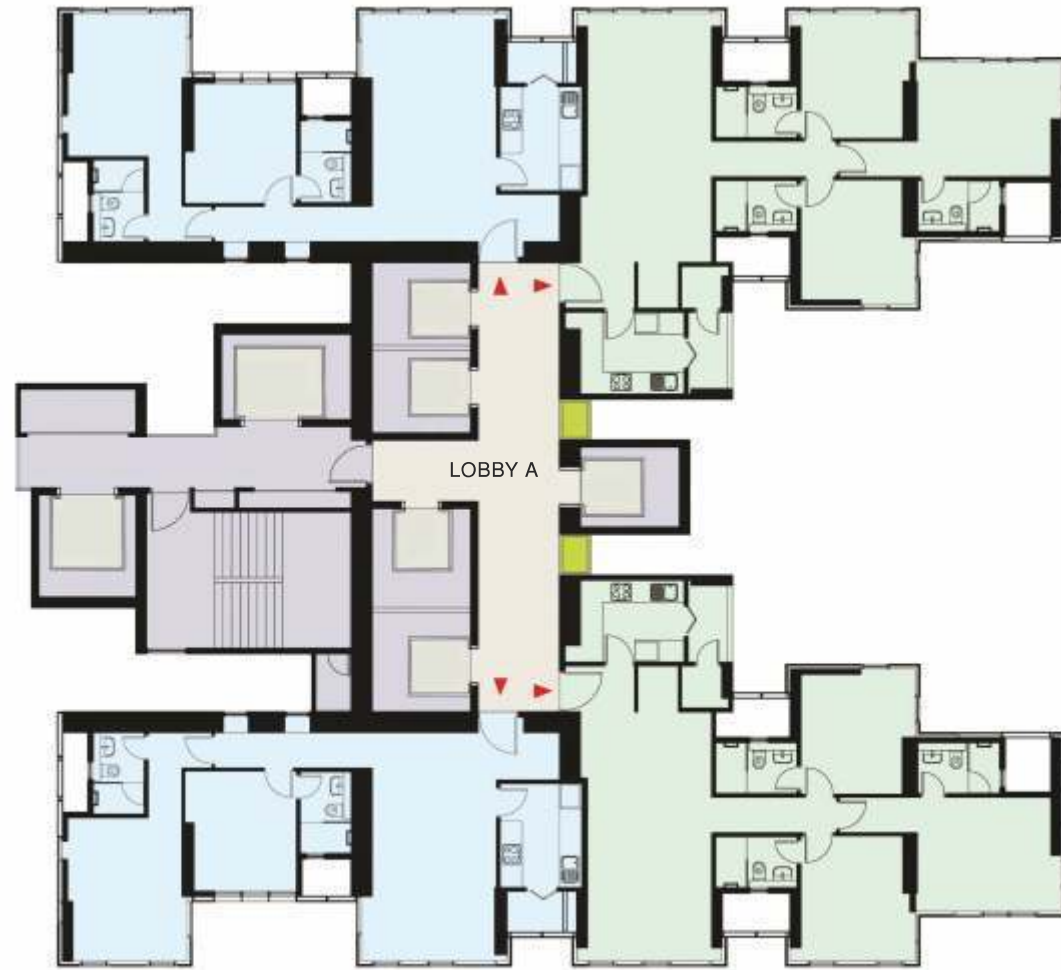


 **LODHA**
ALLURA

The pinnacle of luxury

▾ TYPICAL WING PLAN

WING A



2 BHK
3 BHK

▶ Entry Direction



▾ TYPICAL WING PLAN

WING A



2 BHK
3 BHK

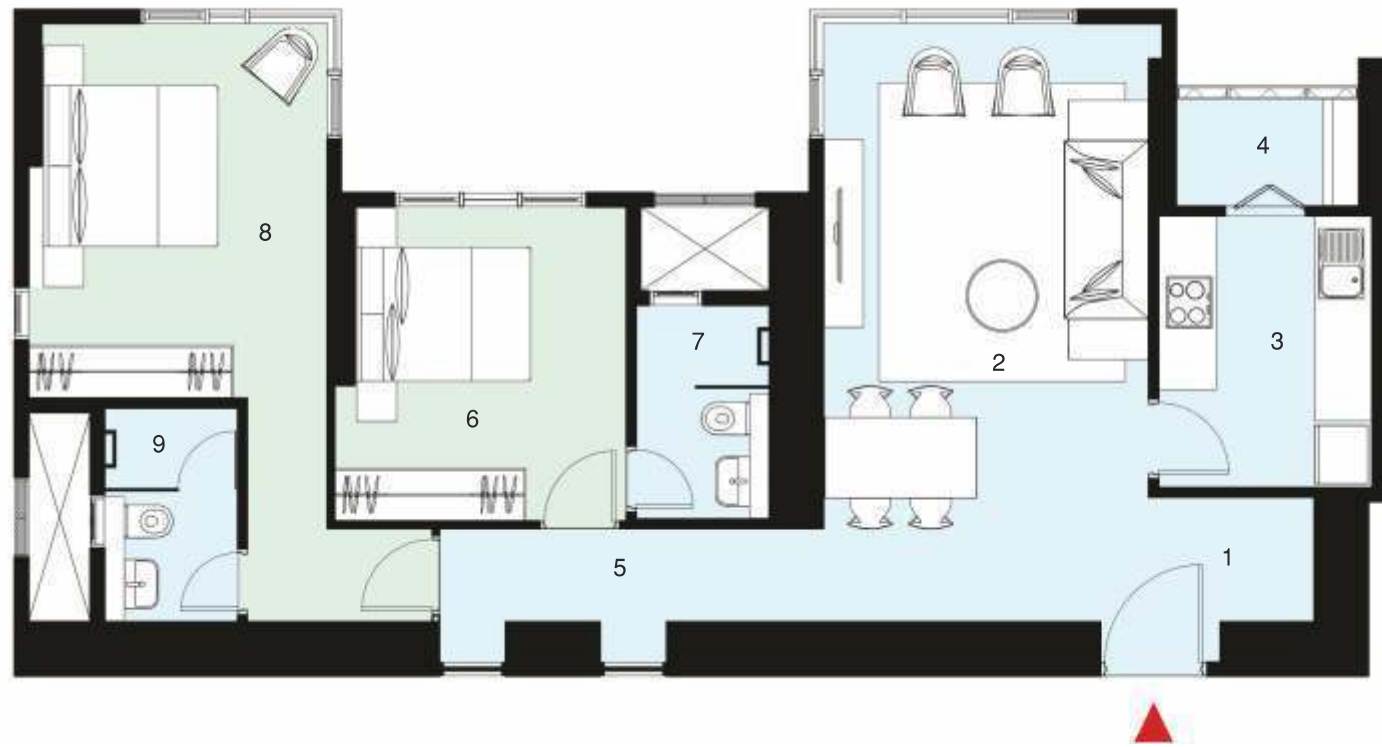
▶ Entry Direction



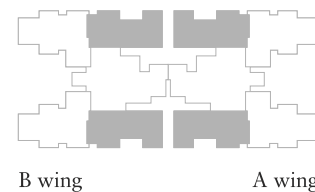
2 BHK UNIT

Layout Summary

- ▲ Spacious layout, ideal for a young family with one or two kids
- ▲ A clear demarcation of personal and common spaces ensures you feel comfortable and at peace
- ▲ Imported designer kitchen, which comes with an attached utility space for your washing machine and clothes line
- ▲ Full-length corner windows in the living room and master bedroom for panoramic and dazzling views



1. Entrance Lobby 4'5" x 5'11"
2. Living & Dining Area 12' x 22'
3. Kitchen 7'10" x 10'
4. Utility 5'5" x 4'
5. Passage 14'1" x 3'5"
6. Bedroom 10' x 11'7"
7. Toilet 4'11" x 7'11"
8. Bedroom 11' x 13'9"
9. Toilet 4'11" x 7'11"



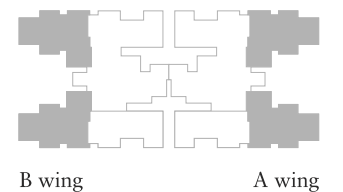
3 BHK UNIT

Layout Summary

- ▲ Spacious layout with plenty of room to move around after furnishing. Ideal for a family with grandparents and one/two kids and for young families who need a spare room for a study, a home office or personal library
- ▲ Imported designer kitchen, which comes with an attached utility space for your washing machine and clothes line as well as an additional storage space for your dry groceries
- ▲ A clear demarcation of personal and common spaces ensures you feel comfortable and at peace
- ▲ Full-length corner windows in all the bedrooms for panoramic and dazzling views
- ▲ A separate Puja room - a niche designed for your spiritual side



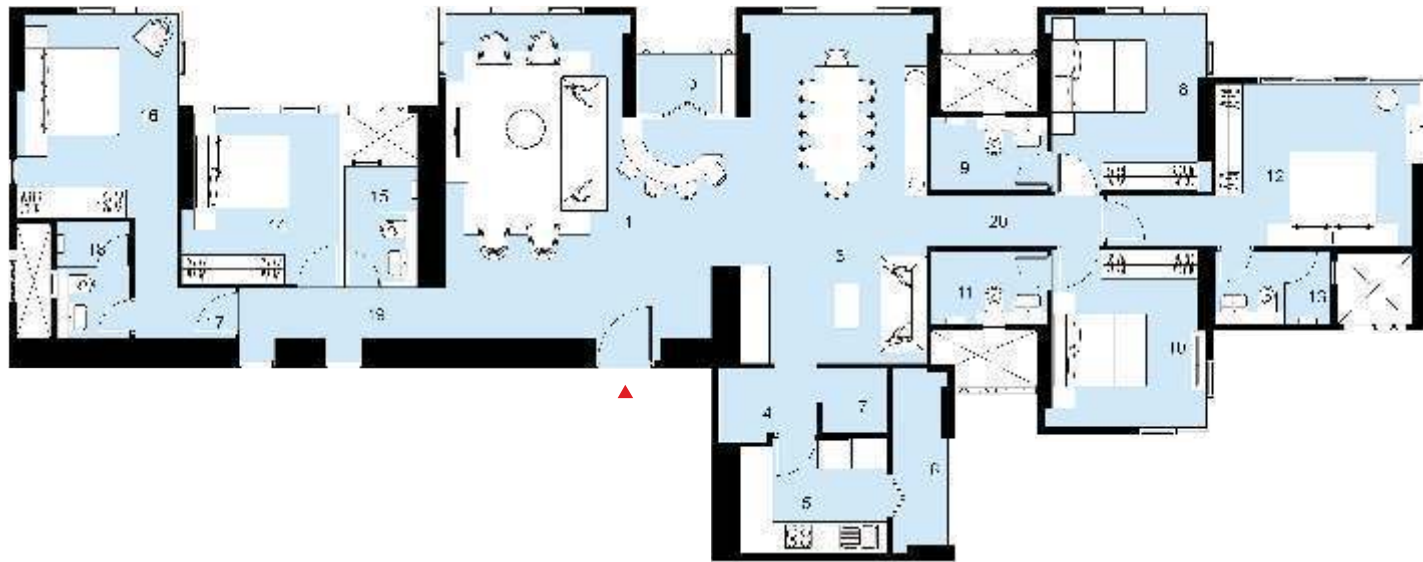
1. Entrance Lobby 5'5" x 4'5"
2. Living & Dining Area 12' x 24'
3. Puja 3'11" x 4'5"
4. Kitchen 10' x 7'11"
5. Utility 3'9" x 7'4"
6. Store 3'10" x 4'1"
7. Bedroom 10'6" x 12'
8. Toilet 7'11" x 4'11"
9. Bedroom 10'6" x 12'
10. Toilet 7'11" x 4'11"
11. Bedroom 14' x 11'
12. Toilet 7'11" x 4'11"
13. Passage 12' x 3'5"



5 BHK UNIT

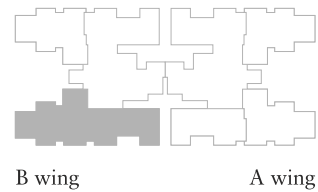
Layout Summary

- ▲ With this layout you'll have the whole wing to yourself. You can enjoy absolute privacy and have plenty of room to move around after furnishing
- ▲ Nicely spaced large living and dining spaces. There is also space to setup your personal bar—perfect for social gatherings
- ▲ Imported designer kitchen, which comes with an attached utility space for your washing machine and clothes line as well as an additional storage space for your dry groceries
- ▲ A clear demarcation of personal and common spaces ensures you feel comfortable and at peace - perfect for joint families
- ▲ Full-length corner windows in the living room and all bedrooms for panoramic and dazzling views
- ▲ A separate Puja room - a niche designed for your spiritual side



This layout is also available in A-Wing, Lodha Parkside

1. Living Room 20'8" X 22'0"
2. Store 5'5" X 3'11"
3. Dining / Family Area 12'0" X 23'9"
4. Puja 5'1" X 3'3"
5. Kitchen 10'0" X 7'11"
6. Utility 3'9" X 11'10"
7. Store 4'6" X 4'6"
8. Bedroom 10'6" X 12'0"
9. Toilet 7'11" X 4'11"
10. Bedroom 10'6" X 12'0"
11. Toilet 7'11" X 4'11"
12. Bedroom 14'0" X 11'0"
13. Toilet 7'11" X 4'11"
14. Bedroom 10'0" X 11'7"
15. Toilet 4'11" X 7'11"
16. Bedroom 11'0" X 13'9"
17. Passage 6'10" X 3'5"
18. Toilet 4'11" X 7'11"
19. Passage 14'1" X 3'5"
20. Passage 12'0" X 3'5"



LODHA
PARKSIDE
A Rare Privilege

TYPICAL WING PLAN

WING B



2 BHK
3 BHK

▶ Entry Direction



TYPICAL WING PLAN

WING B



2 BHK
3 BHK

▶ Entry Direction

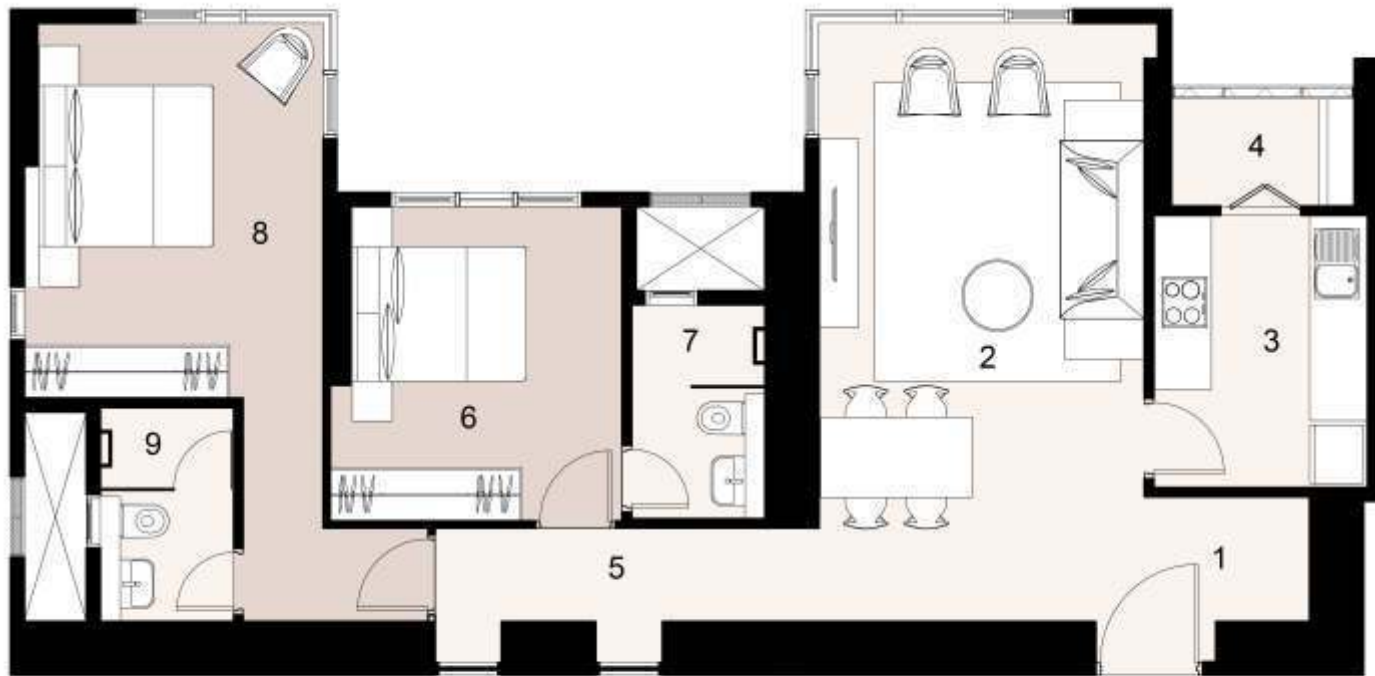


2 BHK UNIT

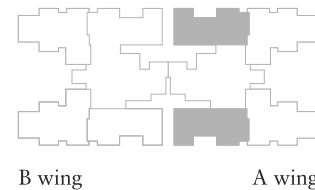
TYPE - 1

Layout Summary

- ▲ These layouts are intelligently designed to ensure you have plenty of room to move around after furnishing. Ideal for young families
- ▲ Imported designer kitchen, which comes with an attached utility space for your washing machine and clothes line
- ▲ A clear demarcation of personal and common spaces ensures you feel comfortable and at peace
- ▲ Full-length corner windows in the living room and master bedroom for panoramic and dazzling views



1. Entrance Lobby 7'10" X 4'7"
2. Living & Dining 12'0" X 22'0"
3. Kitchen 7'11" X 10'0"
4. Utility 5'5" X 4'0"
5. Passage 14'1" X 3'5"
6. Bedroom 10'0" X 11'7"
7. Toilet 4'11" X 7'11"
8. Bedroom 11'0" X 13'9"
9. Toilet 4'11" X 7'11"

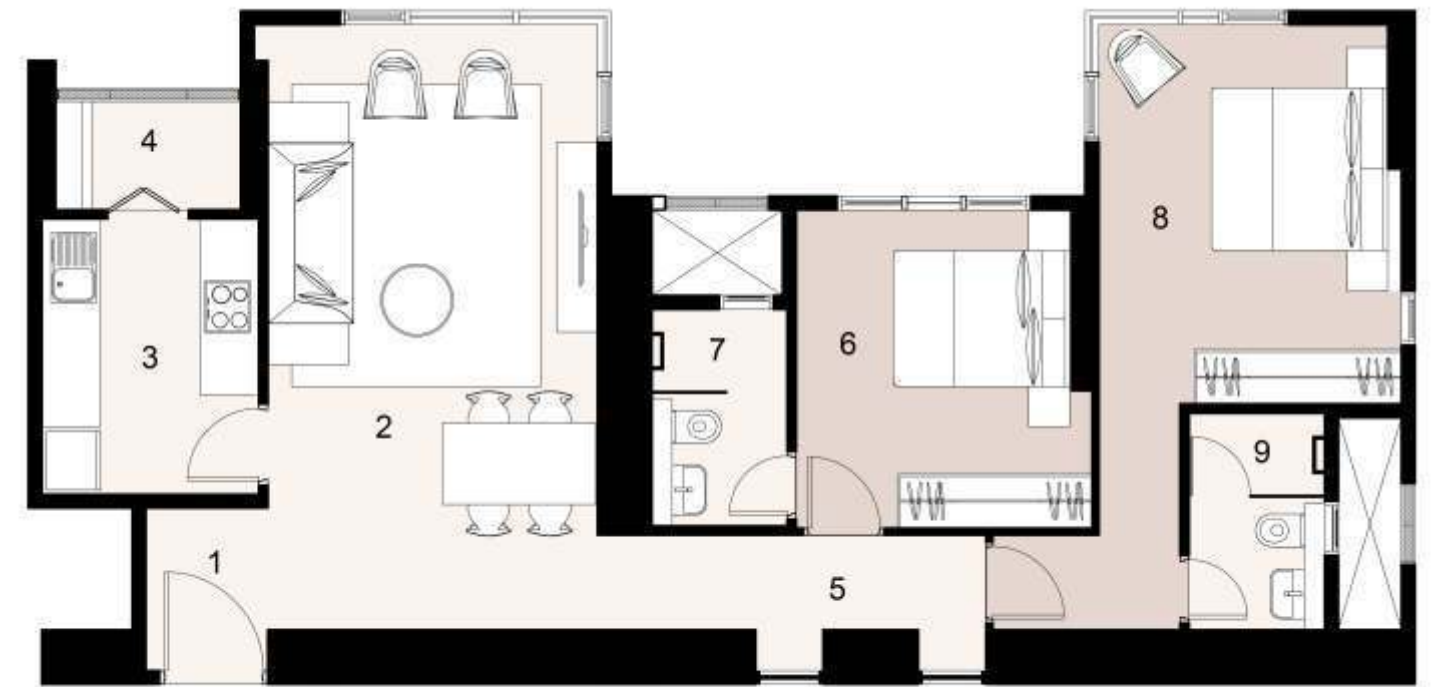


2 BHK UNIT

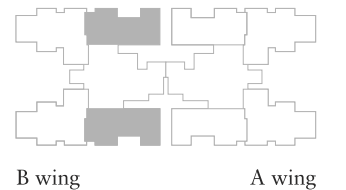
TYPE - 2

Layout Summary

- ▲ A larger entrance lobby compared to type 1, providing you privacy and some extra storage space
- ▲ A spacious layout, which is designed so you have plenty of room to move around after furnishing. Ideal for young families
- ▲ Imported designer kitchen, which comes with an attached utility space for your washing machine and clothes line
- ▲ Full-length corner windows in the living room and master bedroom for panoramic and dazzling views
- ▲ A clear demarcation of personal and common spaces ensures you feel comfortable and at peace



1. Entrance Lobby 4'5" X 5'11"
2. Living & Dining 12'0" X 22'0"
3. Kitchen 7'11" X 10'0"
4. Utility 5'5" X 4'0"
5. Passage 14'1" X 3'5"
6. Bedroom 10'0" X 11'7"
7. Toilet 4'11" X 7'11"
8. Bedroom 11'0" X 13'9"
9. Toilet 4'11" X 7'11"



3 BHK UNIT

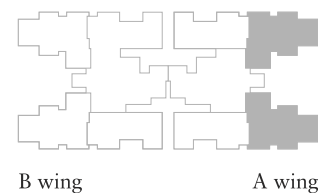
TYPE - 1

Layout Summary

- ▲ An entrance foyer gives you privacy and the optimized design ensures maximum usable space
- ▲ Spacious layout with plenty of room to move around after furnishing. Perfect for a small joint family
- ▲ Imported designer kitchen, which comes with an attached utility space for your washing machine and clothes line
- ▲ A clear demarcation of personal and common spaces ensures you feel comfortable and at peace
- ▲ Full-length corner windows in all the bedrooms for panoramic and dazzling views
- ▲ Puja room - a niche designed for your spiritual side
- ▲ The master bedroom has its own foyer for enhanced privacy



1. Entrance Lobby 7'3" X 4'5"
2. Living & Dining 12'0" X 24'0"
3. Puja 3'11" X 4'5"
4. Kitchen 10'0" X 7'11"
5. Utility 3'9" X 7'4"
6. Store 3'10" X 4'1"
7. Bedroom 10'6" X 12'0"
8. Toilet 7'11" X 4'11"
9. Bedroom 10'6" X 12'0"
10. Toilet 7'11" X 4'11"
11. Bedroom 14'0" X 11'0"
12. Toilet 7'11" X 4'11"
13. Passage 12'0" X 3'5"



3 BHK UNIT

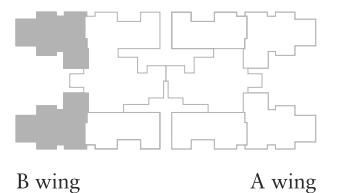
TYPE - 2

Layout Summary

- ▲ Slightly smaller layout compared to type 1
- ▲ A single-bed room ideal for kids with room for study table, wardrobe and dresser, with attached washroom. Can also be turned into a nice home office personal library or a private gym room for smaller families
- ▲ Imported designer kitchen, which comes with an attached utility space for your washing machine and clothes line
- ▲ A clear demarcation of personal and common spaces ensures you feel comfortable and at peace
- ▲ The separate puja niche is designed for your spiritual side



1. Entrance Lobby 5'5" X 4'5"
2. Living & Dining 11'0" X 23'2"
3. Puja 3'9" X 4'5"
4. Kitchen 10'0" X 7'11"
5. Utility 4'5" X 5'7"
6. Bedroom 8'6" X 11'6"
7. Toilet 7'11" X 4'11"
8. Bedroom 12'0" X 10'0"
9. Toilet 8'5" X 4'11"
10. Bedroom 13'2" X 12'0"
11. Toilet 7'11" X 4'11"
12. Passage 13'0" X 3'5"

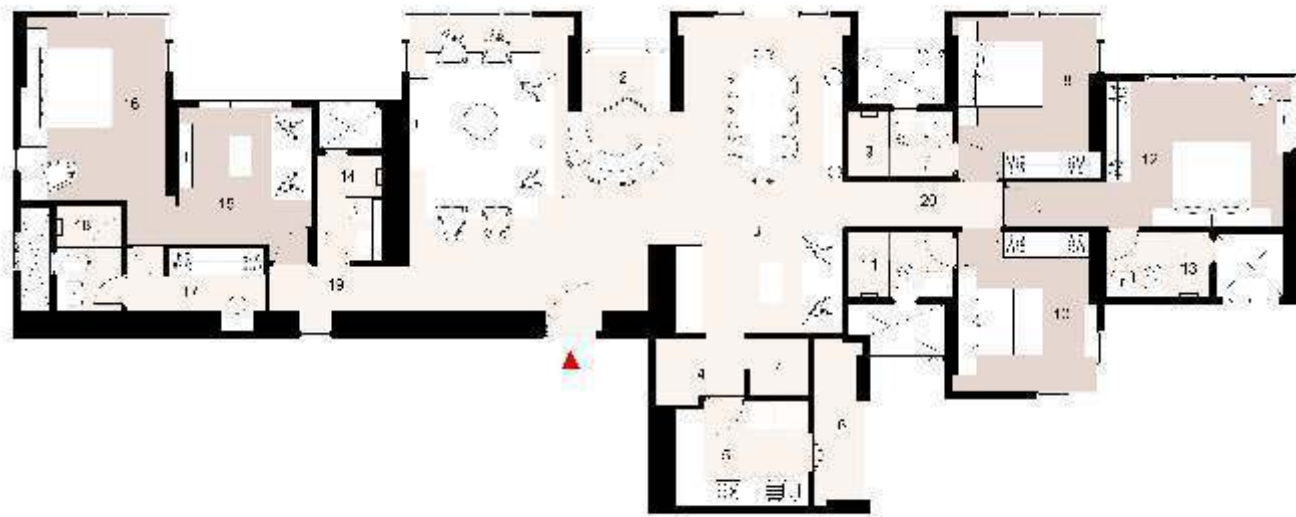


4 BHK UNIT

TYPE - 1

Layout Summary

- ▲ Spacious layout with plenty of room to move around after furnishing
- ▲ Imported designer kitchen, which comes with an attached larger utility space for your washing machine and clothes line as well as storage space for dry groceries
- ▲ A clear demarcation of personal and common spaces ensures you feel comfortable and at peace. A separate powder room for guests is available so your private bathrooms stays private
- ▲ The master bedroom is designed like a luxurious suite and has a seating area with full length windows. The master bathroom opens into a walk-in wardrobe for a perfect daily ritual
- ▲ The other 3 bedrooms are also quite spacious and have full length corner windows for plenty of light and nice views
- ▲ The living room is very spacious for large social gatherings. You could setup a home theatre or a gaming zone and even install a small bar for parties



This layout is also available in Lodha Allura

1. Living Room 20'8" X 22'0"
2. Deck / Store 5'5" X 3'11"
3. Dining / Family Area 12'0" X 23'9"
4. Puja 5'1" X 3'3"
5. Kitchen 10'0" X 7'11"
6. Utility 3'9" X 11'10"
7. Store 4'6" X 4'6"
8. Bedroom 10'6" X 12'0"
9. Toilet 7'11" X 4'11"
10. Bedroom 10'6" X 12'0"
11. Toilet 7'11" X 4'11"
12. Bedroom 14'0" X 11'0"
13. Toilet 7'11" X 4'11"
14. Powder 4'11" X 7'11"
15. Seating Area 10'0" X 10'4"
16. Bedroom 11'0" X 13'9"
17. Walk In Wardrobe 10'5" X 4'8"
18. Toilet 4'11" X 7'11"
19. Passage 10'6" X 3'5"
20. Passage 12'0" X 3'5"

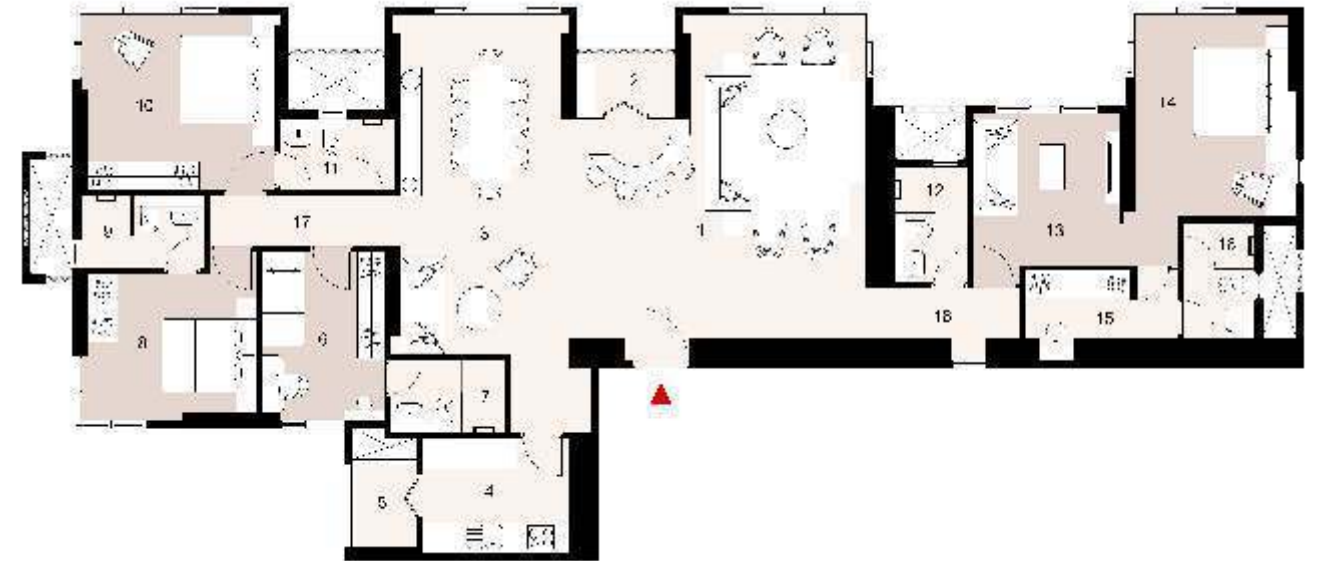


4 BHK UNIT

TYPE - 2

Layout Summary

- ▲ Spacious rooms with plenty of room to move around after furnishing
- ▲ It's slightly smaller than type 1 and has a single-bed bedroom with ample space for a study table. You could also turn this room into a study/office as per need
- ▲ Imported designer kitchen, which comes with an attached larger utility space for your washing machine and clothes line as well as storage space for dry groceries
- ▲ A clear demarcation of personal and common spaces ensures you feel comfortable and at peace.
- ▲ There's a powder room for your guests so your private bathrooms stay private
- ▲ The master bedroom is designed like a luxurious suite and has a seating area with full length windows. The master bathroom opens into a walk-in wardrobe for a perfect daily ritual
- ▲ The other 3 bedrooms are also quite spacious and have full length corner windows for plenty of light and nice views
- ▲ The living room is very spacious for large social gatherings. You could setup a home theatre or a gaming zone and even install a small bar for parties



1. Living Room 20'8" X 22'0"
2. Deck / Store 5'5" X 3'11"
3. Dining / Family Area 11'0" X 23'2"
4. Kitchen 10'0" X 7'11"
5. Utility 4'5" X 5'7"
6. Bedroom 8'6" X 11'6"
7. Toilet 7'11" X 4'11"
8. Bedroom 12'0" X 10'0"
9. Toilet 8'5" X 4'11"
10. Bedroom 13'2" X 12'0"
11. Toilet 7'11" X 4'11"
12. Powder 4'11" X 7'11"
13. Seating Area 10'0" X 10'4"
14. Master Bedroom 11'0" X 13'9"
15. Walk In Wardrobe 10'5" X 4'8"
16. Toilet 4'11" X 7'11"
17. Passage 13'0" X 3'5"
18. Passage 10'6" X 3'5"



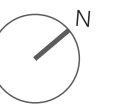
TYPICAL WING PLAN

WING A



TYPICAL WING PLAN

WING B

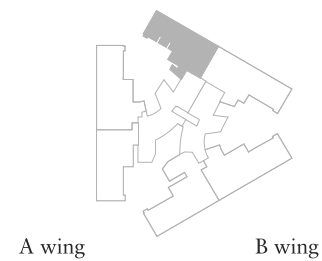
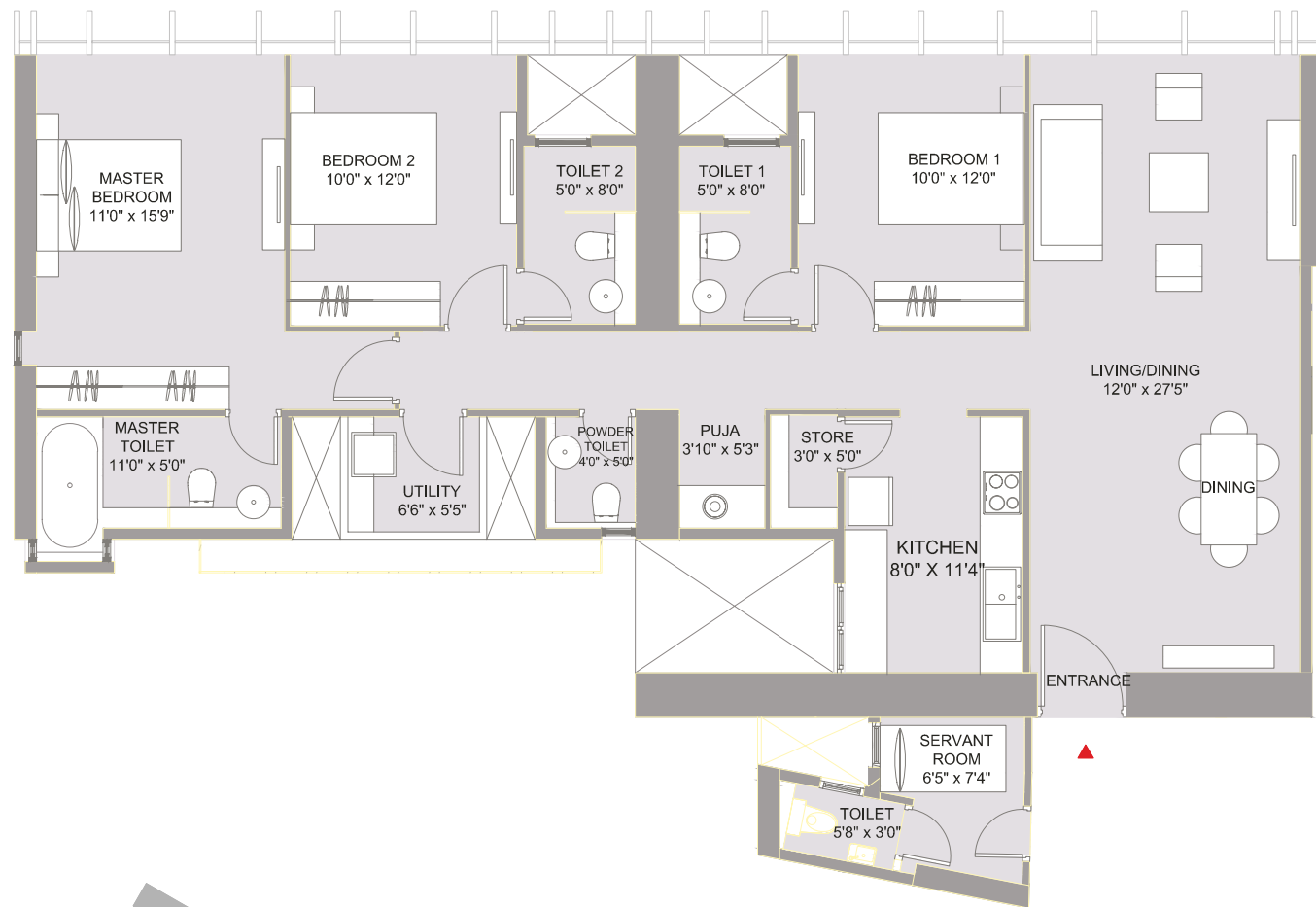


3 BHK LUXE UNIT

TYPE - 1

Layout Summary

- ▲ This layout is designed to offer you a luxurious living space with 3 sides open for privacy and great views
- ▲ The living and dining area is quite spacious with plenty of room to move around after furnishing
- ▲ German Poggenpohl kitchen which comes with storage space for dry groceries. These kitchens are specially designed to transform your cooking space into a living space
- ▲ A separate larger convenient utility space for your washing machine and clothes lines
- ▲ The master bathroom comes with a luxurious bathtub to pamper your senses
- ▲ The bedrooms have full length windows for plenty of sunlight and nice views
- ▲ The Puja rooms serves as your own spiritual niche
- ▲ A powder room is also available for your guests, so your bedrooms remain your private sanctuary
- ▲ This layout also comes with servant room with attached toilet. This has a separate entrance to respect your privacy



A wing B wing

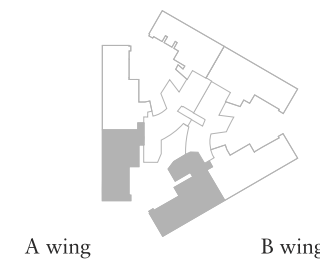
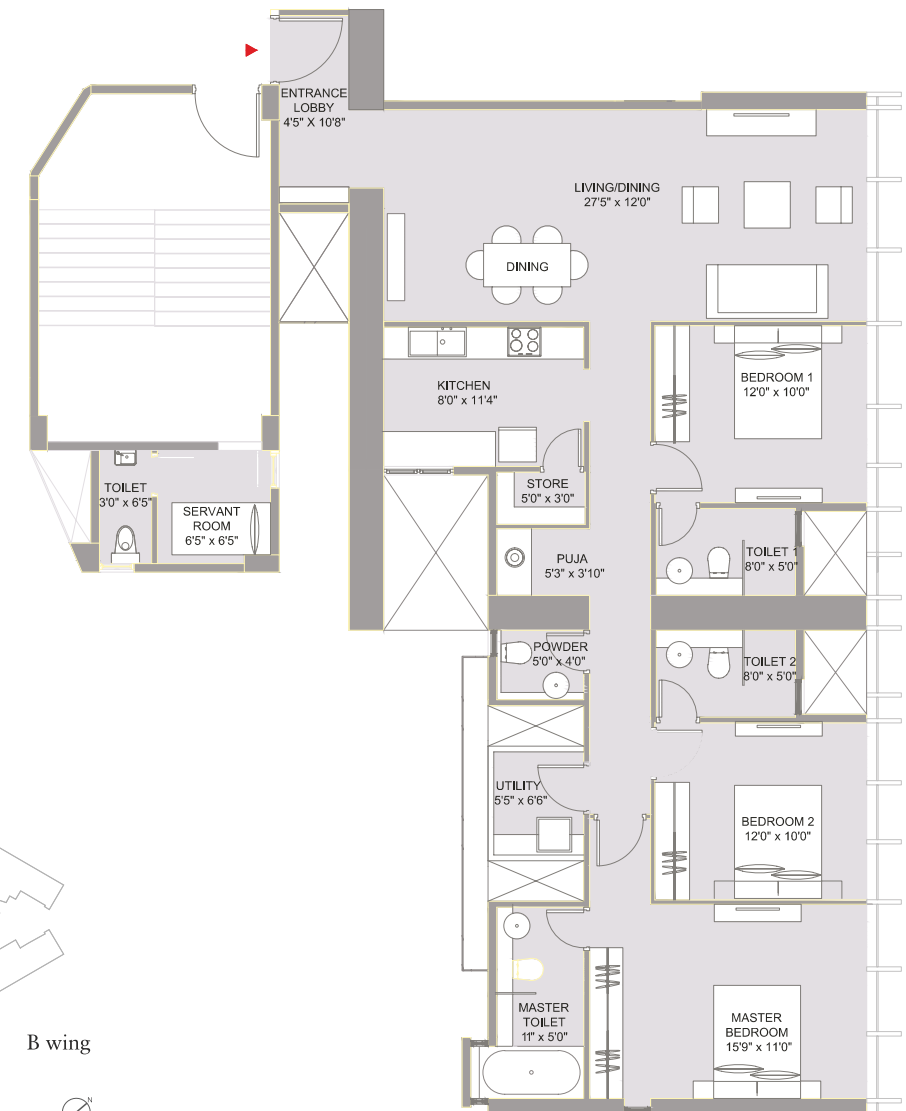


3 BHK LUXE UNIT

TYPE - 2

Layout Summary

- ▲ This layout is designed to offer you a luxurious living space with 3 sides open for privacy and great views and is slightly larger than type 1
- ▲ The living and dining area is more spacious with plenty of room to move around after furnishing and has a distinct entrance foyer for added privacy
- ▲ The German Poggenpohl kitchen transforms your cooking space into a living space. It also comes with a storage space for dry groceries
- ▲ A separate convenient utility space for your washing machine and clothes lines
- ▲ The master bathroom comes with a luxurious bathtub to pamper your senses
- ▲ The bedrooms have full length windows for plenty of sunlight and nice views
- ▲ The Puja rooms serves as your own spiritual niche
- ▲ A powder room is also available for your guests, to enhance the privacy of your bedrooms
- ▲ Perfectly suited for a small joint family of 5-6 members or for small families who often need a spare bedroom for guests or need an extra room for a music room or other pursuits
- ▲ The servant accommodation is provided on the mid-landing floor for added privacy and security



A wing B wing

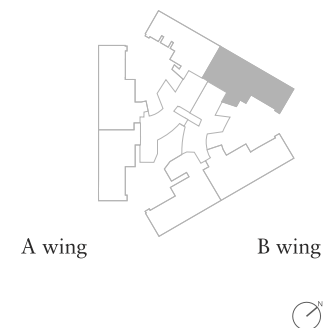
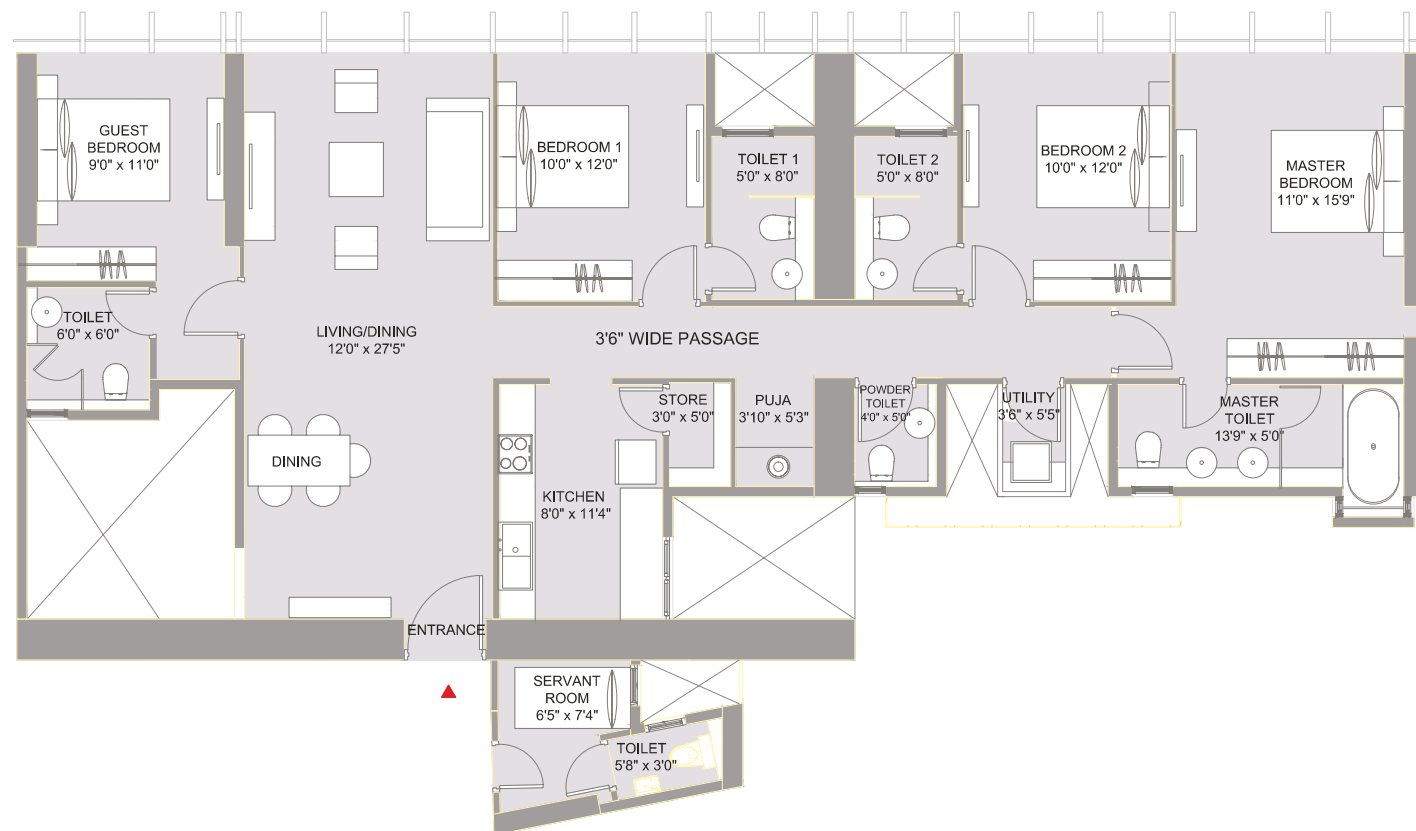


4 BHK LUXE UNIT

TYPE - 1

Layout Summary

- ▲ This layout is designed to offer you a luxurious living space with 3 sides open for privacy. Perfectly suited for a joint family of 6-8 members or for families who often need a spare bedroom for guests or want an extra room for a personal library, gym or music room
- ▲ Full length windows ensure that the apartment gets plenty of natural light
- ▲ The living and dining area is more spacious with plenty of room to move around after furnishing
- ▲ The German Poggenpohl kitchen transforms your cooking space into a living space. It also comes with a storage space for dry groceries
- ▲ A separate convenient utility space for your washing machine and clothes lines
- ▲ The master bathroom comes with a luxurious bathtub to pamper your senses
- ▲ A powder room is also available for your guests, to enhance the privacy of your bedrooms. Should they want to stay over, they can use the guest bedroom specially designed as a part of the combined living spaces
- ▲ There's also a servant's room with attached toilet, with separate entrance which provides privacy

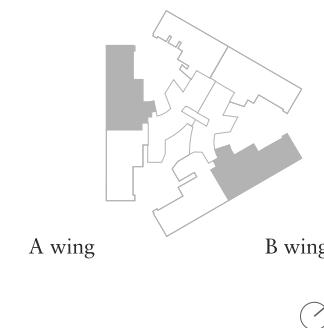
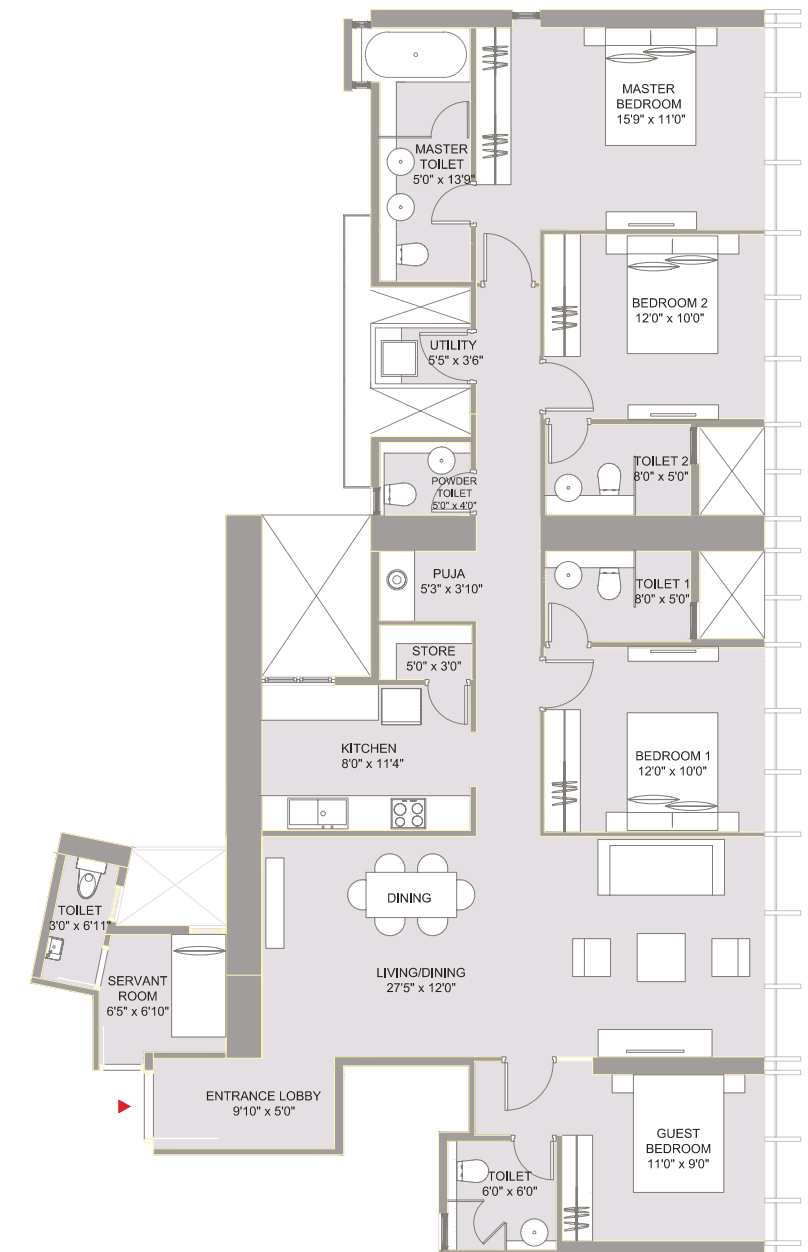


4 BHK LUXE UNIT

TYPE - 2

Layout Summary

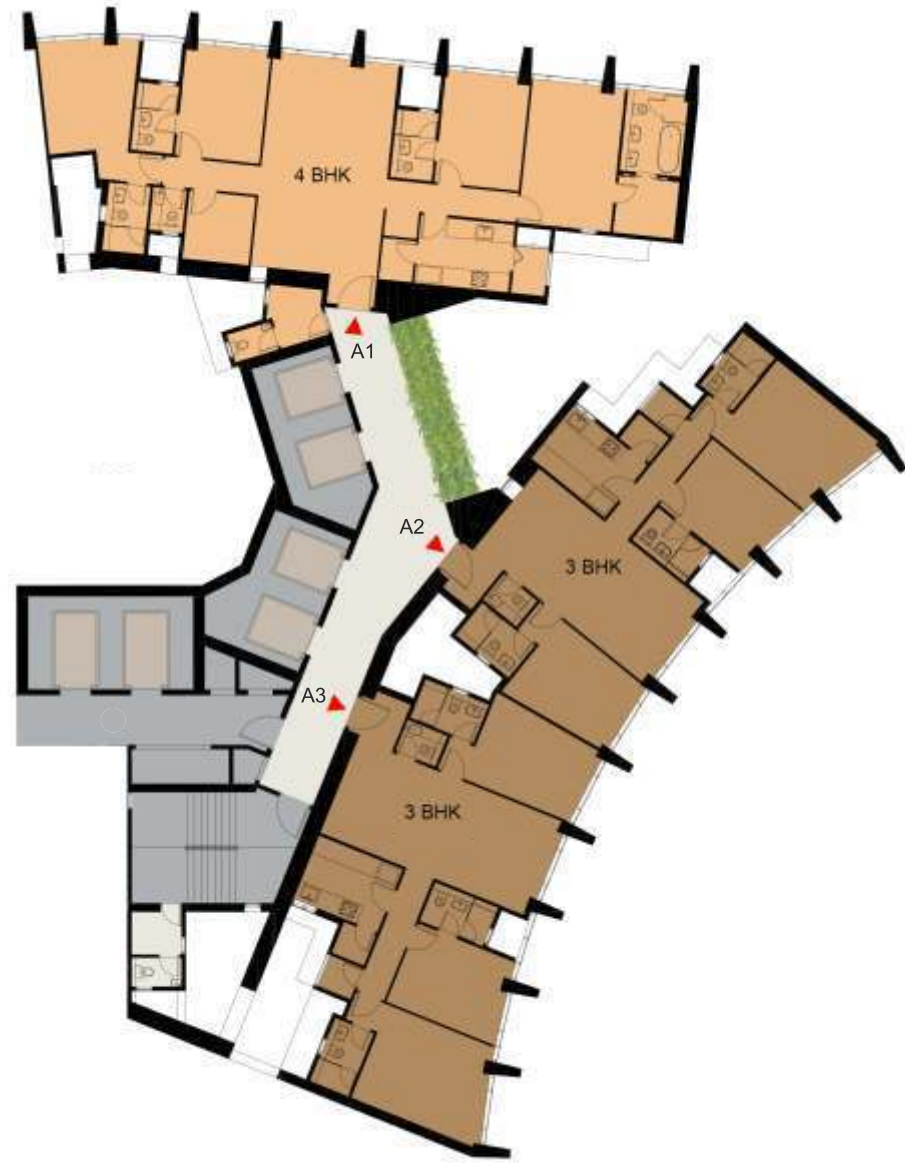
- ▲ This layout is larger than type 1. Full length windows ensure that the apartment gets plenty of sunlight
- ▲ An entrance foyer provides additional space and privacy. The living and dining area is more spacious with plenty of room to move around after furnishing
- ▲ The German Poggenpohl kitchen transforms your cooking space into a living space. It also comes with a storage space for dry groceries
- ▲ A separate convenient utility space for your washing machine and clothes lines
- ▲ The master bathroom comes with a luxurious bathtub to pamper your senses
- ▲ A powder room is also available for your guests, to enhance the privacy of your bedrooms. Should they want to stay over, they can use the guest bedroom specially designed as a part of the combined living spaces
- ▲ Perfectly suited for a joint family of 6-8 members or for families who often need a spare bedroom for guests or want to have a study, a home office or personal library



 **LODHA**
KIARA
The future of living

TYPICAL FLOOR PLAN

WING A



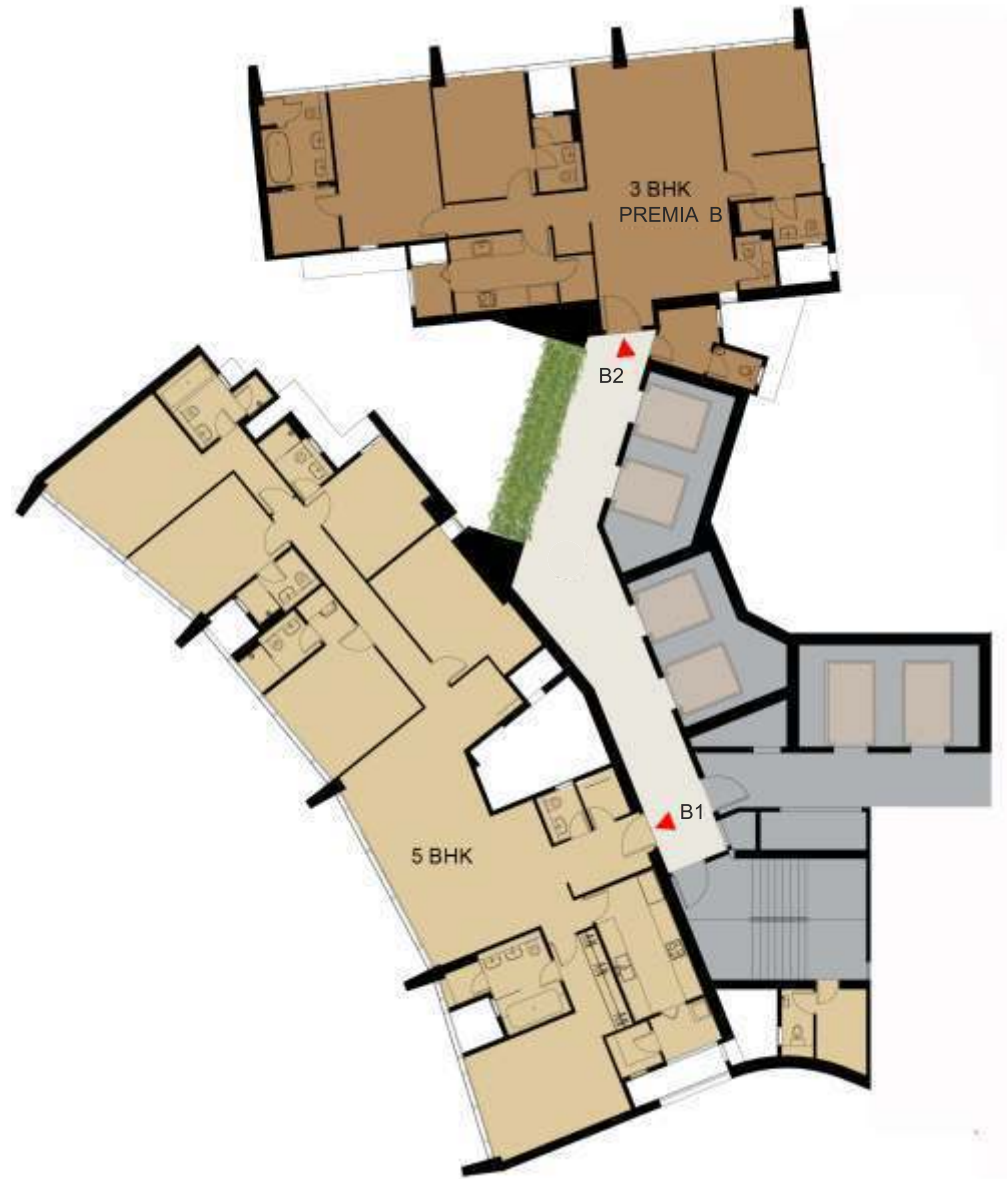
TYPICAL FLOOR PLAN

WING B
LOWER ZONE



TYPICAL FLOOR PLAN

WING B
UPPER ZONE



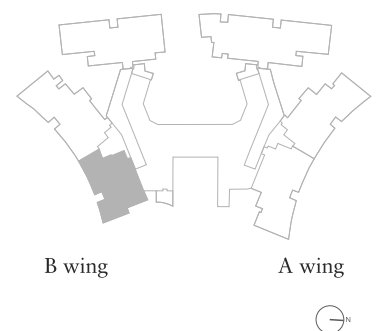
2 BHK UNIT

Layout Summary

- ▲ This layout, the largest 2 bed in the Park, is spacious with plenty of room to move around after furnishing. Ideal for small young families
- ▲ Full length windows on one side of the apartment that brings plenty of natural light and beautiful views
- ▲ Imported designer kitchen, which comes with an attached utility space for your washing machine and clothes line as well as a storage space for your dry groceries
- ▲ The bedrooms are spacious and have plenty of room to move around after furnishing



1. Dining Area 12' X 8'4"
2. Living Room 12' X 17"
3. Bedroom 1 10'1" X 12'7" + 5'4" X 4'11"
4. Bathroom 4'11" X 8'
5. Kitchen 10' X 8'
6. Utility 3'5" X 5'11"
7. Store 3'5" X 4'10"
8. Master Bedroom 11'10" X 15' + 3'5" X 2'11"
9. Master Bathroom 4'11" X 8'
10. Passage 5'3" X 3'11"

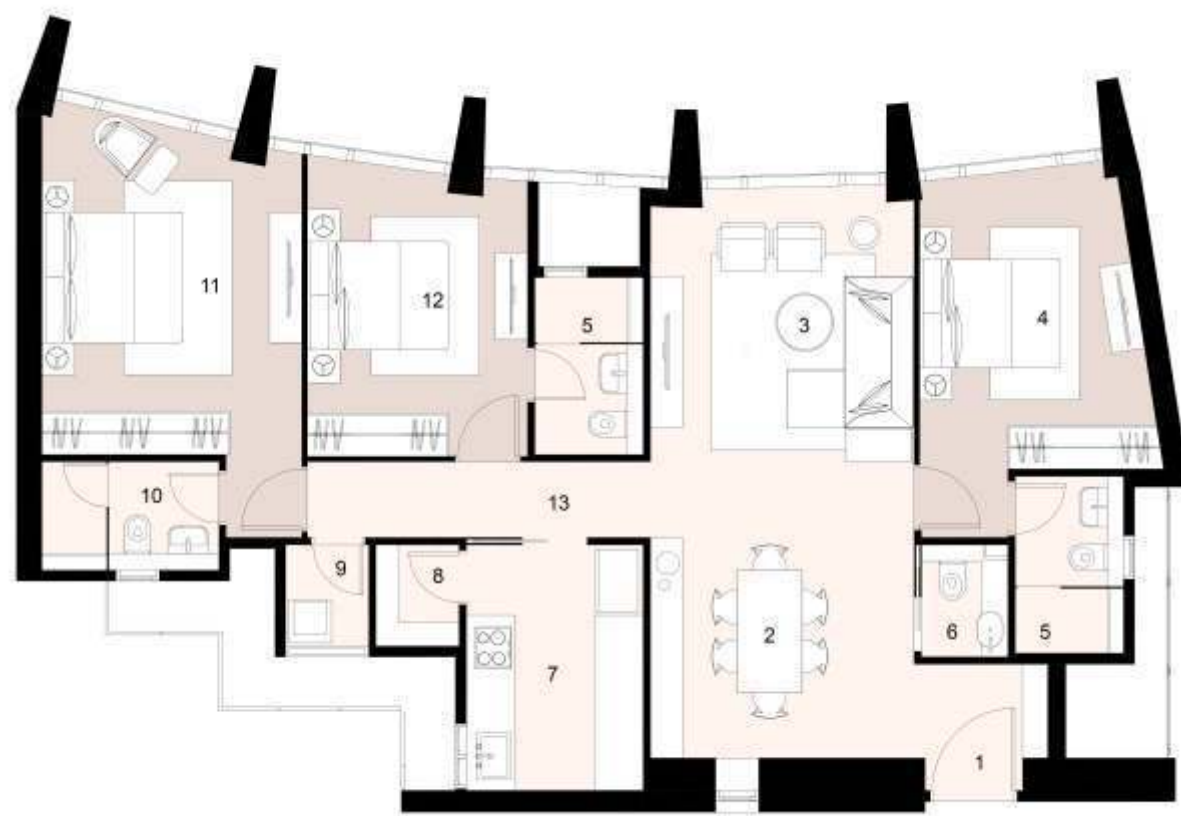


3 BHK UNIT

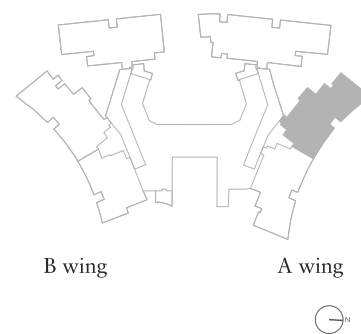
A-02

Layout Summary

- ▲ This layout with full length windows on one side, is spacious and has plenty of natural light. Ideal for small joint families
- ▲ Imported designer kitchen, which comes with a storage space for your dry groceries
- ▲ A separate utility space for your washing machine and clothes line
- ▲ The living room also has a powder room for guests. The design clearly demarcates the private and common spaces in the residence



1. Entrance 6'1" X 4'3"
2. Dining Area 12' X 10'
3. Living Room 12' X 15'9"
4. Bedroom 1 10'1" X 13'5" + 4' X 3'1"
5. Bathroom 4'11" X 8'
6. Powder Room 3'11" X 5'1"
7. Kitchen 8' X 11'2"
8. Store 3'9" X 4'7"
9. Utility 3'9" X 4'7"
10. Master Bathroom 8' X 4'11"
11. Master Bedroom 11'10" X 14'8" + 3'5" X 3'9"
12. Bedroom 2 10' X 12'10"
13. Passage 15'7" X 3'5"

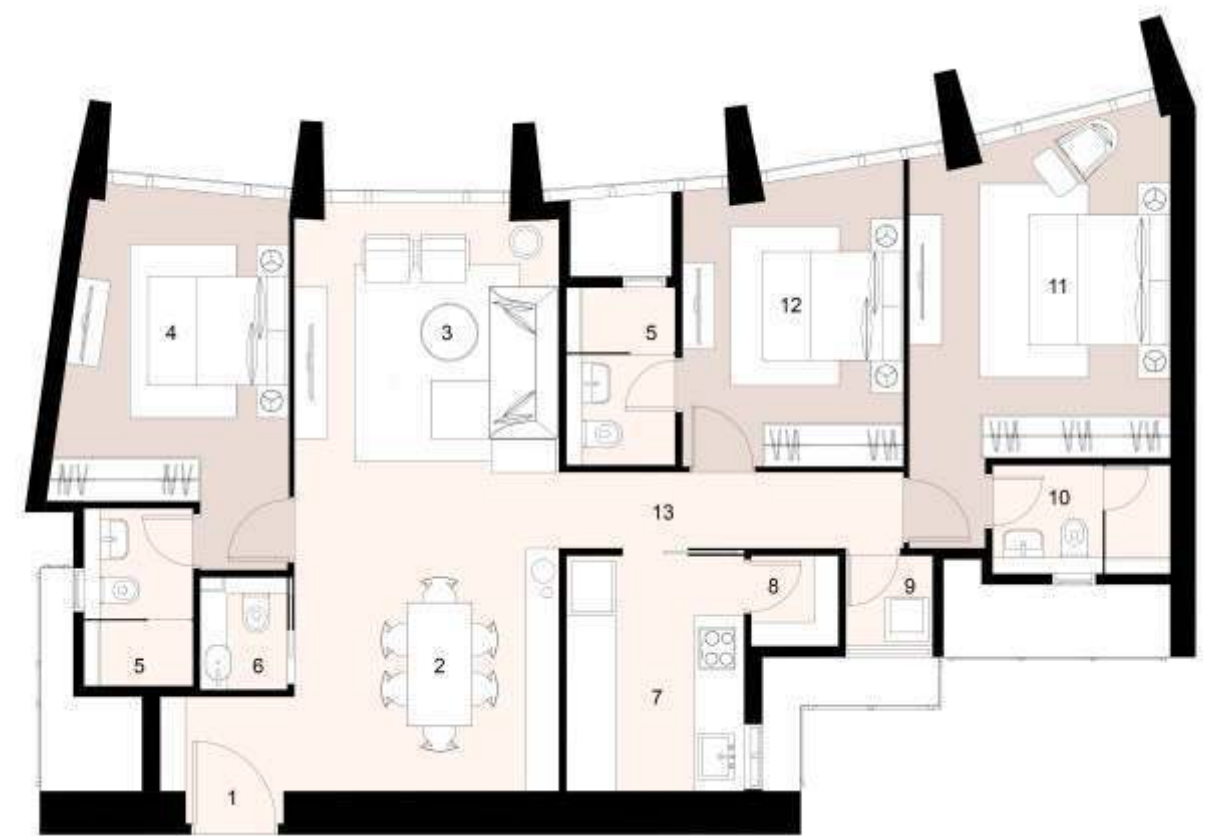


3 BHK UNIT

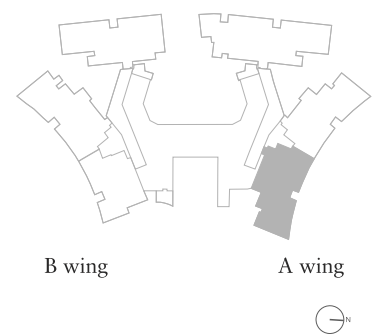
A-03

Layout Summary

- ▲ This layout is slightly smaller than A02, still one of our larger 3 Bed residences with plenty of natural light and beautiful city views
- ▲ Imported designer kitchen, which comes with separate storage space for your dry groceries
- ▲ A separate utility space for your washing machine and clothes line
- ▲ The bedrooms are spacious and have plenty of room to move around after furnishing
- ▲ The living room also has a powder room for guests to ensure that your bedroom remains your private sanctuary



1. Entrance 6'1" X 4'3"
2. Dining Area 12' X 11'
3. Living Room 12' X 15'6"
4. Bedroom 1 10'1" X 13'11" + 4' X 3'1"
5. Bathroom 4'11" X 8'
6. Powder Room 3'11" X 5'1"
7. Kitchen 8' X 10'8"
8. Store 3'11" X 4'1"
9. Utility 3'11" X 4'1"
10. Master Bathroom 8' X 4'11"
11. Master Bedroom 11'10" X 14'8" + 3'5" X 4'1"
12. Bedroom 2 10' X 12'11"
13. Passage 15'7" X 3'5"

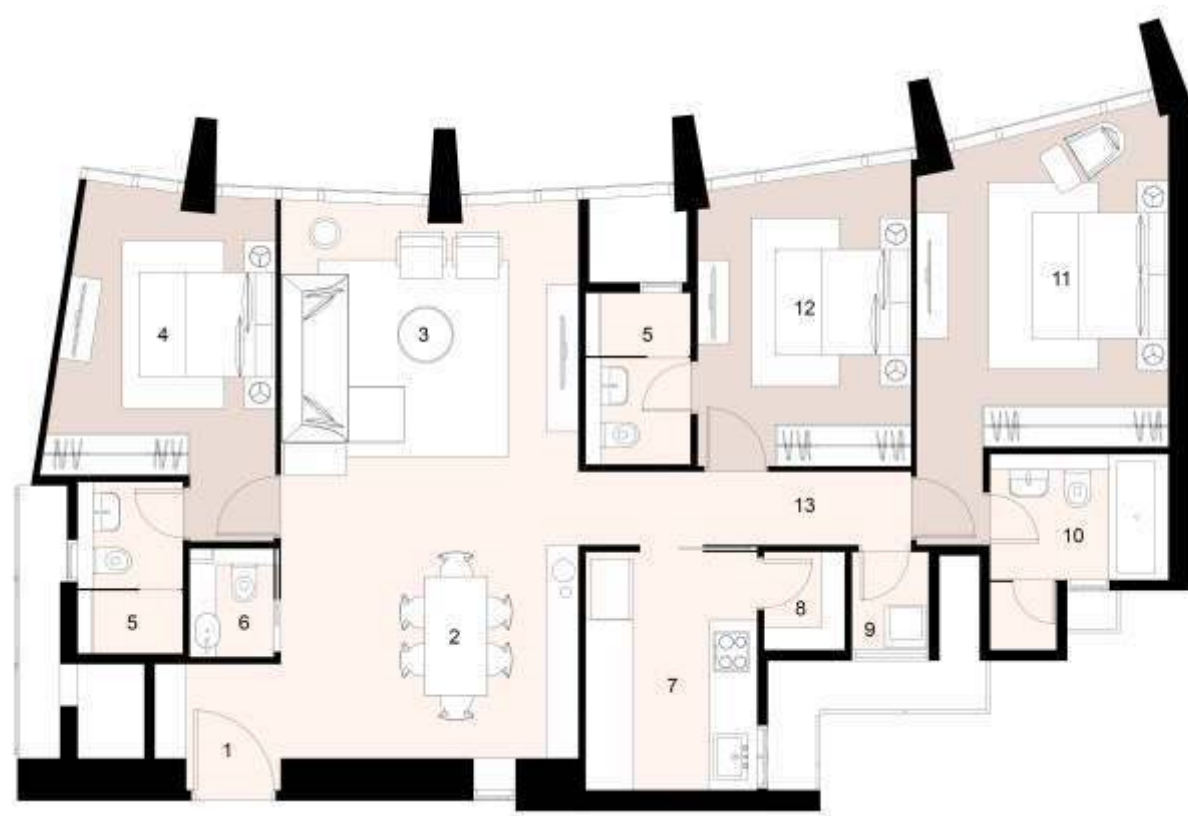


3 BHK PREMIA UNIT

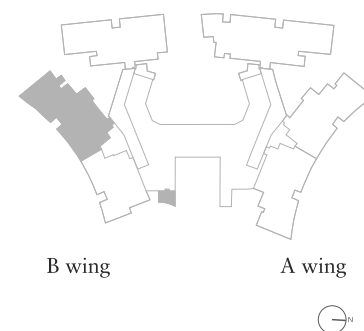
TYPE - 1

Layout Summary

- ▲ A luxurious 3 Bed layout, perfect for small joint families
- ▲ It is spacious and has plenty of natural light and is on lower floors providing beautiful views of the 7-acre landscaped Park
- ▲ Imported designer kitchen, which comes with a storage space for your dry groceries
- ▲ A separate utility space for your washing machine and clothes line
- ▲ The bedrooms are spacious and have plenty of room to move around after furnishing
- ▲ The living room also has a powder room for guests
- ▲ The master bathroom fitted with a bathtub is perfect for pampering your senses
- ▲ A servant's room and toilet is also provided at the mid-landing to for your convenience while ensuring privacy and security



1. Entrance 5'11" X 4'5"
2. Dining Area 13'11" X 10'
3. Living Room 13'11" X 15'9"
4. Bedroom 1 10' X 13'2" + 4' X 3'1"
5. Bathroom 4'11" X 8'
6. Powder Room 3'11" X 5'1"
7. Kitchen 8' X 11'2"
8. Store 3'9" X 4'7"
9. Utility 3'7" X 4'7"
10. Master Bathroom 8'4" X 5'11" + 3'1" X 3'2"
11. Master Bedroom 11'10" X 14'9" + 2'11" X 4'7"
12. Bedroom 2 10' X 13'5"
13. Passage 15'7" X 3'5"

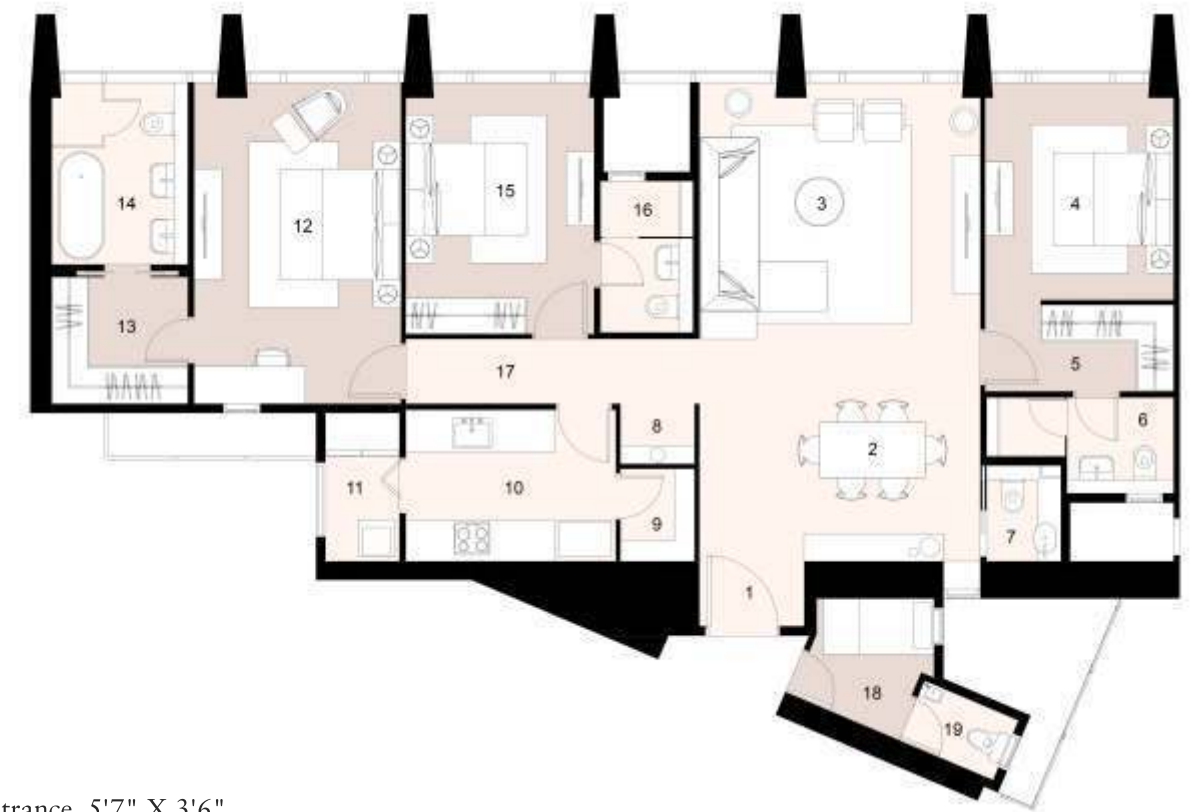


3 BHK PREMIA UNIT

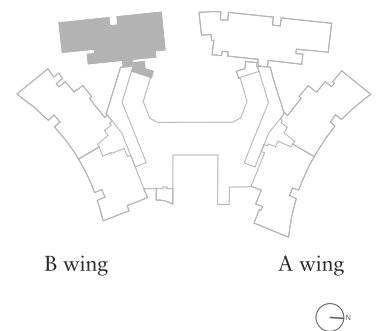
TYPE - 2

Layout Summary

- ▲ A luxurious 3 Bed layout, perfect for small joint families
- ▲ It is spacious and has plenty of natural light and is on lower floors, providing beautiful views of the 7-acre landscaped Park
- ▲ Imported designer kitchen, which comes with a storage space for your dry groceries
- ▲ A separate utility space for your washing machine and clothes line
- ▲ The master bedroom, inspired from five star hotels, comes with your own walk-in wardrobe and a lavish bathroom
- ▲ The master bathroom fitted with a bathtub is perfect for pampering your senses
- ▲ The living room has a powder room for the guests. This creates a clear demarcation between the common areas and the private areas of the house
- ▲ An attached servant's room and toilet, with a separate entrance for your privacy and security



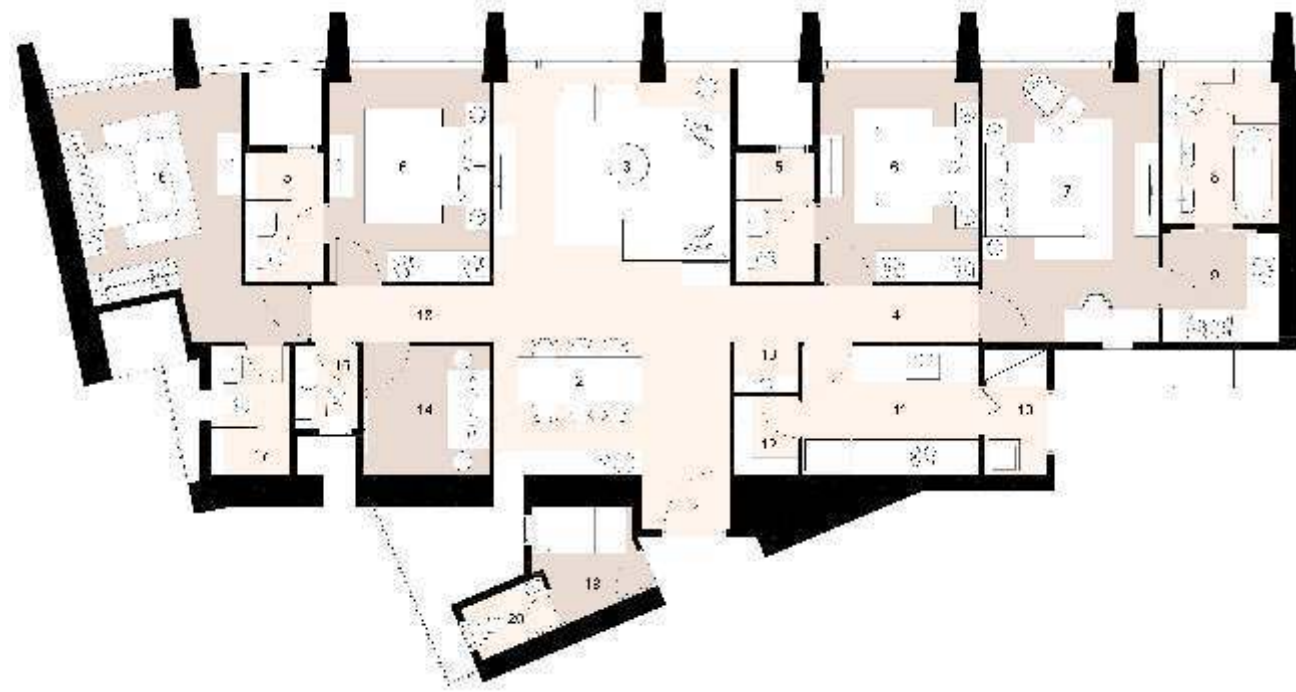
1. Entrance 5'7" X 3'6"
2. Dining Area 14'11" X 8'4"
3. Living Room 14'11" X 16'11"
4. Bedroom 1 10' X 11'5"
5. Walk in Wardrobe 10' X 4'7"
6. Bathroom 1 5'8" X 5'1" + 4'2" X 3'1"
7. Powder Room 3'11" X 5'1"
8. Puja 3'11" X 3'2"
9. Store 3'11" X 4'11"
10. Kitchen 11'2" X 8'
11. Utility 3'11" X 5'7"
12. Master Bedroom 11' X 16'11"
13. Walk in Wardrobe 7'3" X 6'9"
14. Master Bathroom 7'3" X 9'6"
15. Bedroom 2 10' X 13'2"
16. Bathroom 2 4'11" X 8'
17. Passage 15'7" X 3'5"
18. Servant's Room 5'11" X 6'10"
19. Servant's Toilet 5'5" X 3'5"



4 BHK UNIT

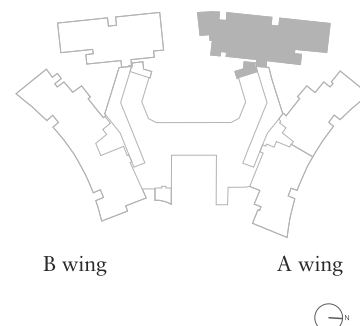
Layout Summary

- ▲ A perfect layout for small joint families
- ▲ It is spacious and has plenty of natural light and is on lower floors providing beautiful views of the 7-acre landscaped Park
- ▲ Imported designer kitchen, which comes with a storage space for your dry groceries
- ▲ A separate utility space for your washing machine and clothes line
- ▲ The master bedroom, inspired from five star hotels, comes with your own walk-in wardrobe and a lavish bathroom
- ▲ The master bathroom fitted with a bathtub is perfect for pampering your senses
- ▲ The living room has a powder room for the guests. This creates a clear demarcation between the common areas and the private areas of the house
- ▲ An attached servant's room and toilet, with a separate entrance for your privacy and security



1. Entrance 5'7" X 3'5"
2. Dining Area 14'11" X 8'4"
3. Living Room 14'11" X 16'11"
4. Passage 15'7" X 3'5"
5. Bathroom 4'11" X 8'
6. Bedroom 2&3 10'x13'2"
7. Master Bedroom 11' X 16'11"
8. Master Bathroom 7'3" X 9'6"
9. Dressing Room 7'3" X 6'9"
10. Utility 3'11" X 5'7"
11. Kitchen 11'2" X 8'
12. Store 3'11" X 4'11"
13. Puja 3'11" X 3'2"
14. Study/home Theatre 7'10" X 8'1"
15. Powder Room 3'11" X 5'1"
16. Bedroom 1 10'8" X 13' + 7'3"x3'5"

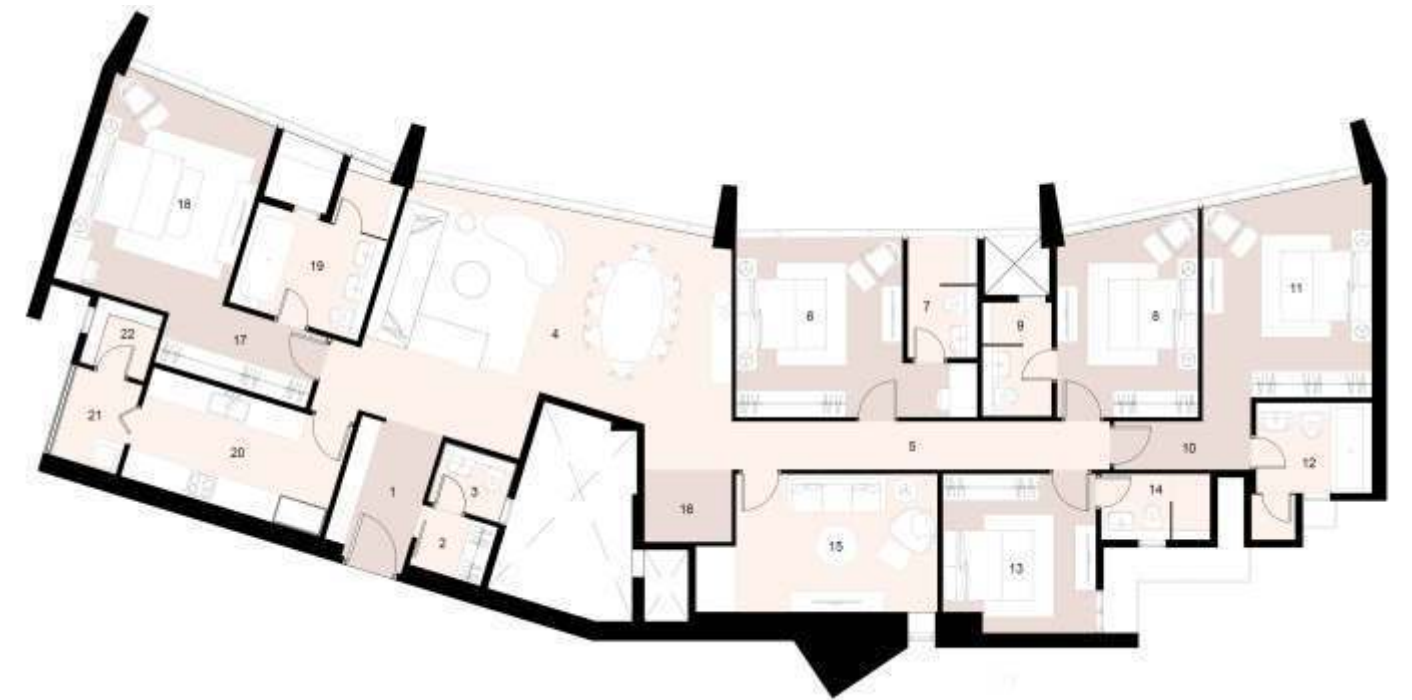
17. Bathroom 4'11 X 8'
18. Passage 11'5" X 3'5"
19. Servant's Room 5'11" X 6'10"
20. Servant's Toilet 5'5" X 3'5"



5 BHK UNIT

Layout Summary

- ▲ A perfect layout for joint families
- ▲ Imported designer kitchen, which comes with a storage space for your dry groceries as well as a separate utility space for your washing machine and clothes line
- ▲ The master bedroom, inspired from five star hotels, comes with your own walk-in wardrobe and a lavish bathroom
- ▲ A cosy home theatre for your Netflix binges
- ▲ The master bathroom fitted with a bathtub is perfect for pampering your senses
- ▲ The living room has a powder room for the guests. This creates a clear demarcation between the common areas and the private areas of the house
- ▲ A servant's room and toilet is also provided at the mid-landing to for your convenience while ensuring privacy and security



1. Entrance 5'11" X 8'2"
2. Cloak Room 5'4" X 3'8"
3. Powder Room 5'4" X 5'4"
4. Living & Dining Area 25'7" X 17'3"
5. Passage 26'7" X 3'5"
6. Bedroom 11'9" X 12'6", 5'3" X 3'10"
7. Bathroom 5'x 8'
8. Bedroom 10' X 13'8"
9. Bathroom 5' X 8'
10. Passage 9'8" X 3'5"
11. Junior Master 12' X 14'7"
12. Bathroom 8'2" X 6'5" + 3'1" x 3'1"
13. Guest Bedroom 10'10" X 11'3"
14. Bathroom 4'7" X 7'9"
15. Home Theater 14'3" X 10'5" + 2'10" X 5'4"
16. Puja 6'2" X 5'1"
17. Walk-in Wardrobe 11'2" X 15'3"
18. Master Bedroom 12'0" X 15'3"

19. Master Bathroom 9'2" X 7'5" + 4' X 4'9"
20. Kitchen 14'8" X 8'
21. Utility 4'10" X 5'11"
22. Store 4'10" X 4'11"

