

# *The Art of Peaceful Living*

**DREAMKRAFT**  
Infrastructure Pvt. Ltd.



AT NOIDA **SECTOR-45**

  
**WONDER HOMES**

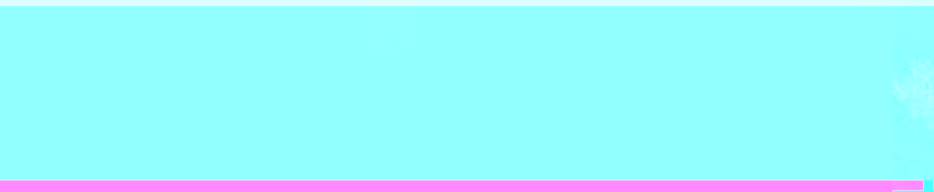







# WONDER HOMES

*A place to live Relax and Revive*





# WONDER HOMES

*Fantastic Location*

While Wonder Homes puts you at the heart of The City, its convenient location can easily be accessed via Noida Expressway, DND Expressway, Kalandi Kunj and lies within the walking distance of Botanical Metro Station (sec-37). Sector - 45 and its surrounding is one of the most posh locality of Noida with least density in Noida. The delightfully serene location of this gated community, makes the hustle of Noida seem a million miles away. This gated community is a relaxed retreat away from the stresses and strife of metropolitan living. A hidden enclave that offers a affordable yet peaceful mix of superbly designed 1BHK, 2BHK & 2BHK+study contemporary apartments.

**YOUR CHOICE OF LOCATION HAS THE FOLLOWING BENEFITS**

- The project is located at Sector - 45, Noida.
- Project will face posh residential houses block and master commercial.
- Surrounded by 100% inhabited posh residential locality.
- 5 Minutes from GIP mall of india and sector 18 metro station.
- 5 Minutes from noida expressway.
- Petrol pumps, banks, schools and hospitals all within 1 km.
- Safe & care free living with police station at 50 meters from the project.



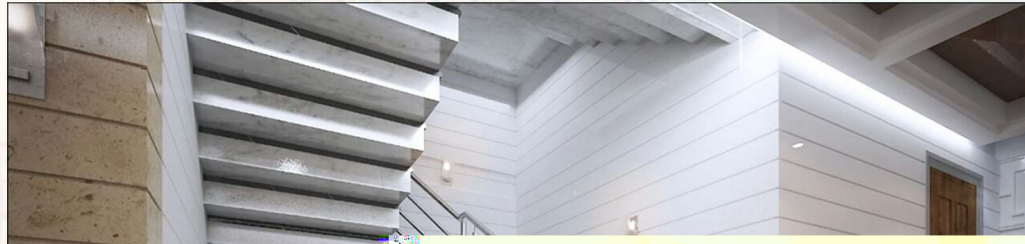


# WONDER HOMES

## Common area Views



Lift Area



Staircase Area

# WONDER HOMES

## Features and Amenities

### WONDER HOMES HAS THE FOLLOWING AMENITIES

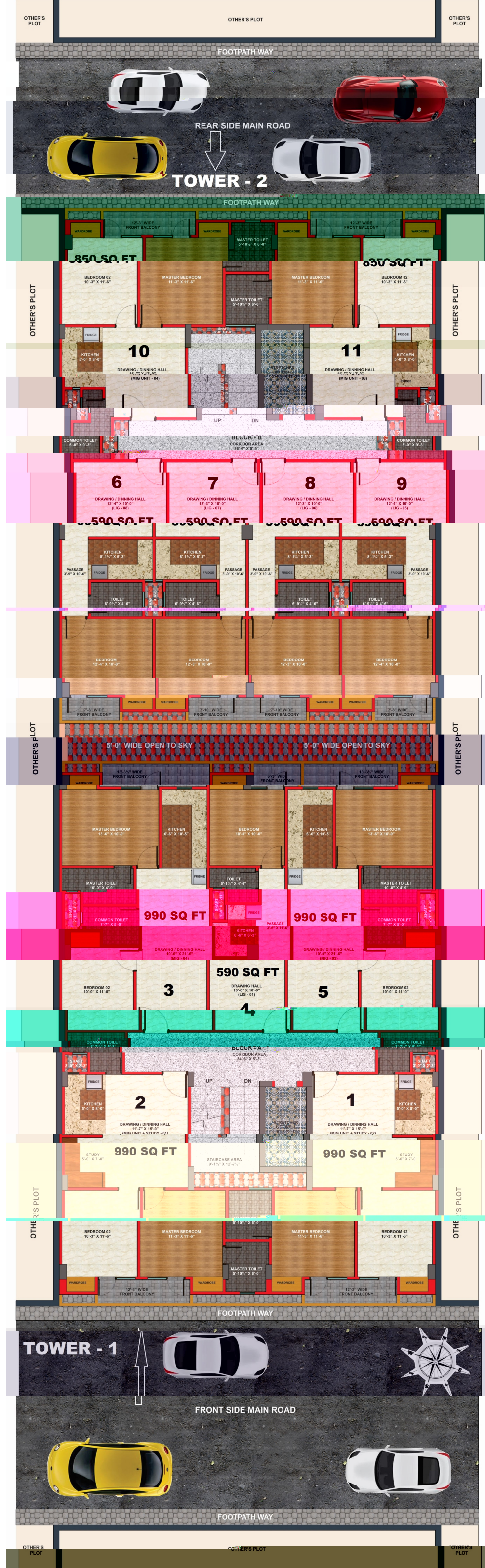
- Easy finance facility available from various banks.
- Convenient payment plans.
- Fully gated society.
- 24X7 2 Tier security.
- Dedicated car and bike parking area.
- Modern architecture and facade.
- Beautifully designed lift lobbies and common areas.
- Convenient shopping for all daily needs within the project.
- Telephone and internet connectivity.
- 24X7 Power backup for common areas.
- Power backup provision.
- Dedicated lift elevators.
- Terrace gym and club.
- Only finished Apartments.



### Disclaimer

Specification, design, layout, conditions etc. are only indicative & some of these can change at the discretion of the builder. These are purely conceptual and not a legal offering. 1 Sq. mt.= 10.764 Sq. Ft.









*Terrace View Lounge*

*Terrace View Open Lounge*

*Terrace View Gym Area*





WONDER HOMES

Specifications

LIVING/DINNING ROOM/DRAWING ROOM

- Floor: Vitrified Tiles(1mX1m)
- Wall: Textured Paint/Plastic Paint
- Ceiling: Designer POP & False ceiling

MASTER BEDROOMS

- Floor: Laminated Wooden flooring
- Wall: Textured Paint/Plastic Paint
- Ceiling: Designer POP
- Wardrobe: Modular Wardrobe

OTHER BEDROOMS

- Floor: Vitrified Tiles(1mX1m)
- Wall: Textured Paint/Plastic Paint
- Ceiling: Designer POP
- Wardrobe: Modular Wardrobe

STRUCTURE

- Earthquake Resistant RCC Structure

FITTING & FIXTURES

- 
- 
- 

EXTERNAL DOORS

- 

ELECTRICAL FITTINGS

- 
- 
- 



KITCHEN

- 
- 
- 

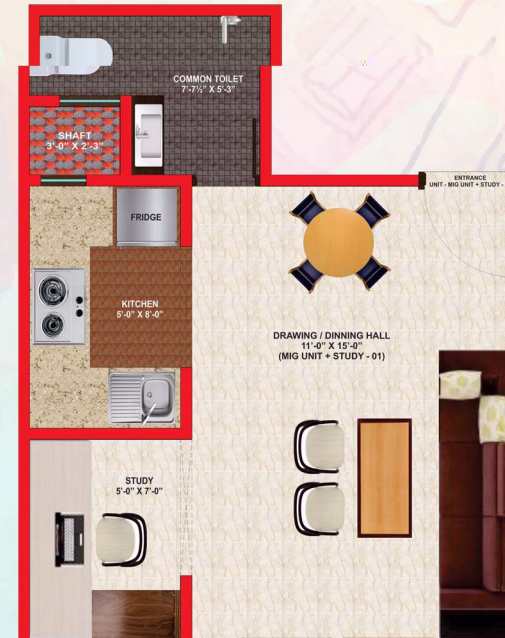
2 BHK + Study Room - 990 sq ft.

2 Bedroom + Study Room + Living Area + Kitchen+ 2 Toilet +Balcony



WONDER HOMES

Floor Plan



3d View



3d View



2 BHK - 850 sq ft.

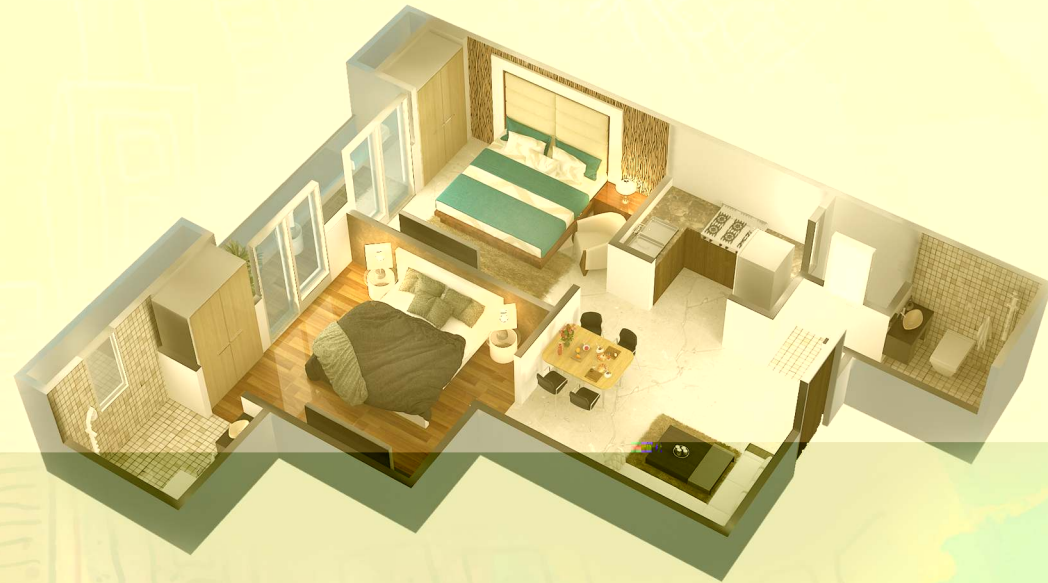
2 Bedroom + Living Area + Kitchen+ 2 Toilet + Balcony



Floor Plan



3d View



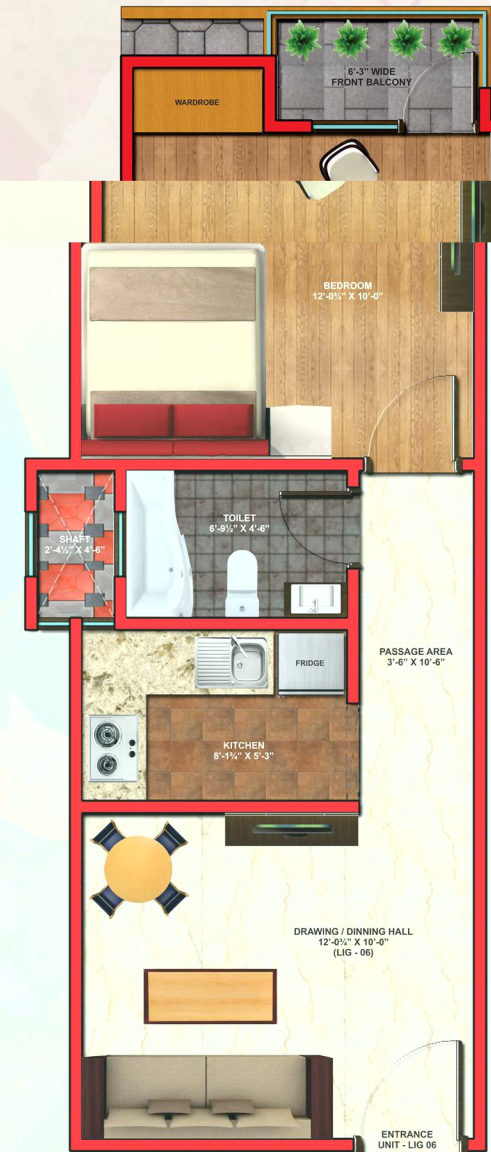
3d View

1 BHK - 590 sq ft.

Drawing Room + 1 Bedroom + Kitchen + Toilet + Balcony



Floor Plan



3d View



3d View

Disclaimer

All specification, design, layout, conditions etc. are only indicative & some of these can change at the discretion of the builder. These are purely conceptual and not a legal offering. 1 Sq. mt.= 10.764 Sq. Ft.

Disclaimer

All specification, design, layout, conditions etc. are only indicative & some of these can change at the discretion of the builder. These are purely conceptual and not a legal offering. 1 Sq. mt.= 10.764 Sq. Ft.





## Location Map



Thank You



## *Get in touch with Us*



B 20 Third Floor, Sector 57, Noida, Uttar Pradesh



+91 8800694000



info@dreamkraft.in



www.dreamkraft.in



AT NOIDA **SECTOR-45**



**WONDER HOMES**