

CONCORDE

AURIGA



Is the space in your home for your loved ones, the same
as the space in your heart?

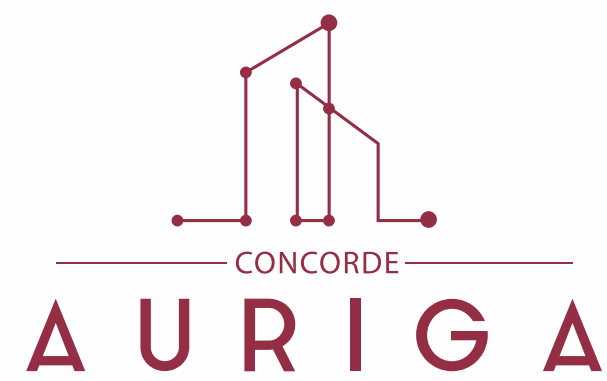
Are the dreams you've seen for them the same as the reality
you're shown everyday?

Do you want life to come to you sometimes, instead of always
going the extra mile?

Should happiness be your destination or the place you start from
every day?

*The answers to these questions are still in your hands. If you feel
otherwise, it's time to...*

*Get a breath
of fresh air*



Open up to a beautiful view outside



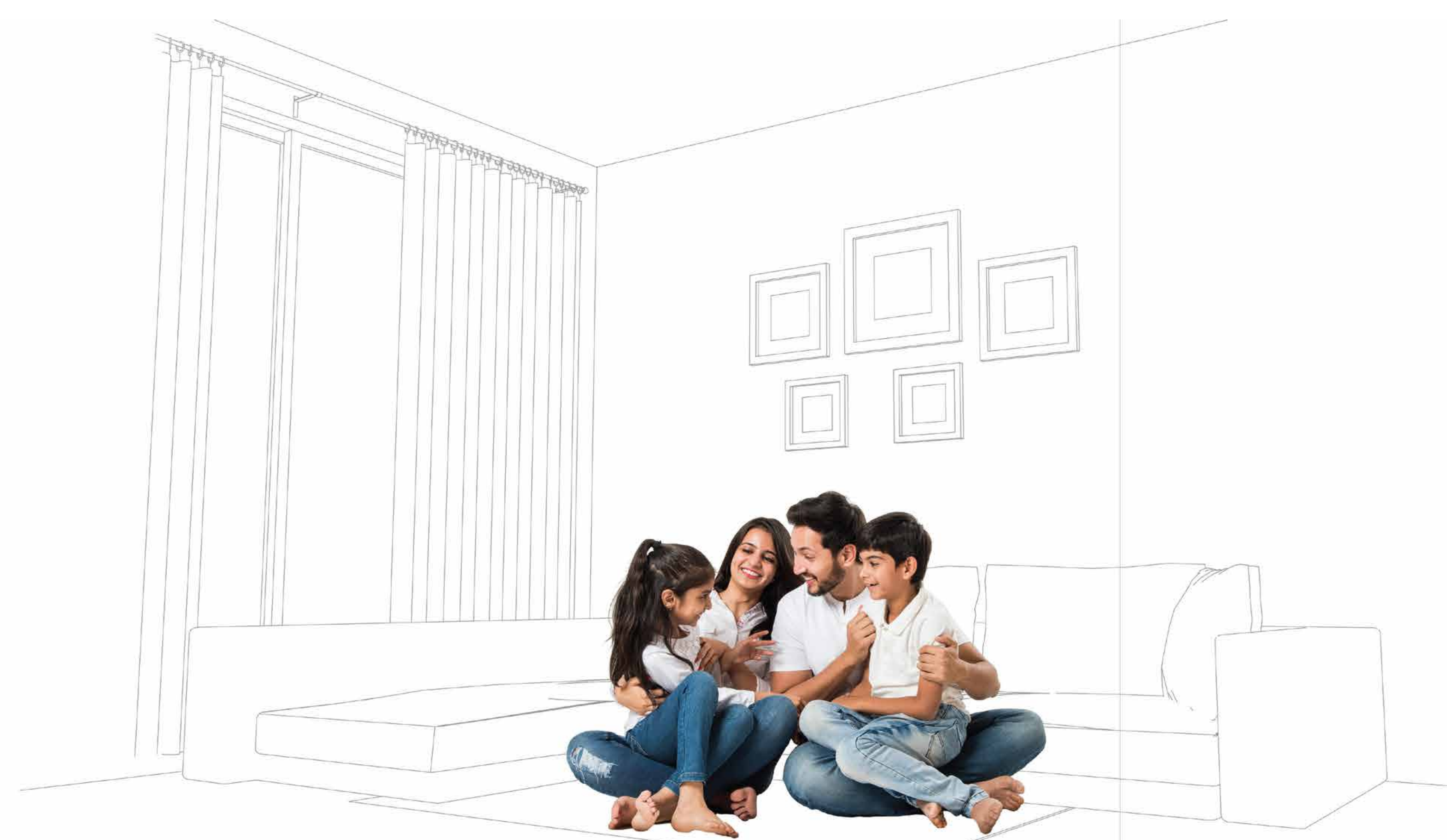




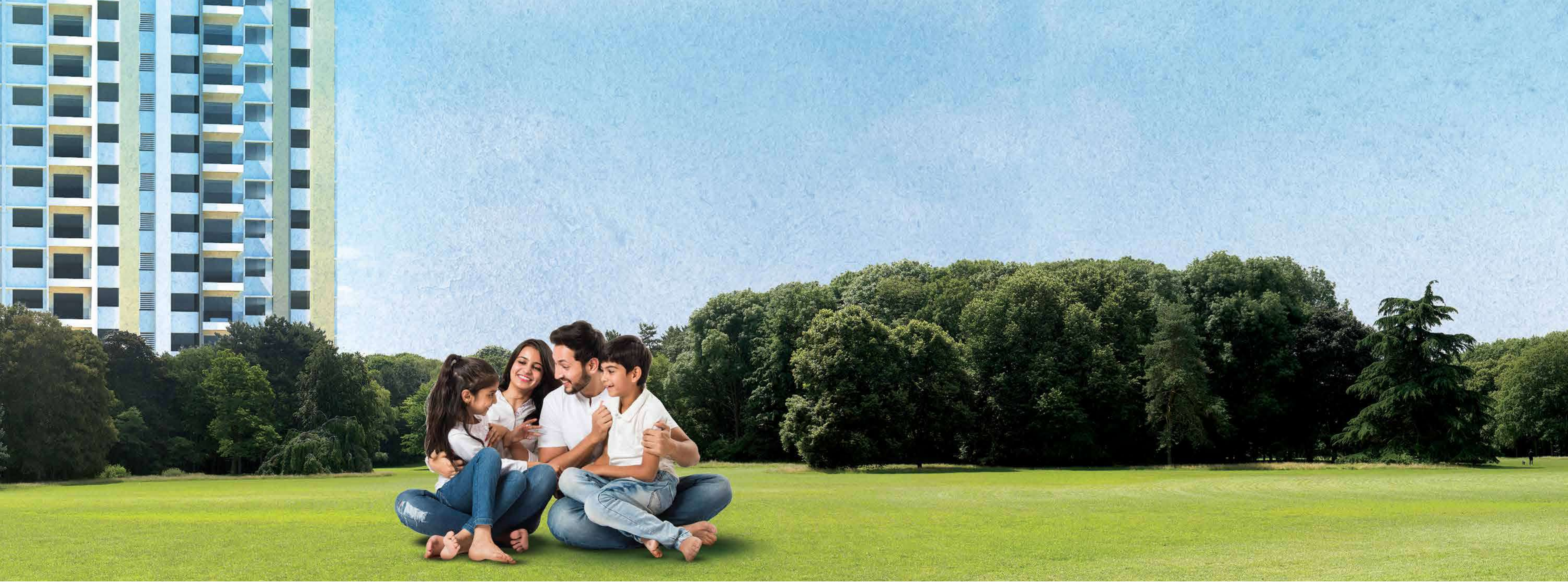
When your surroundings are peaceful, you feel it deep inside.
Sometimes, it's the other way around.

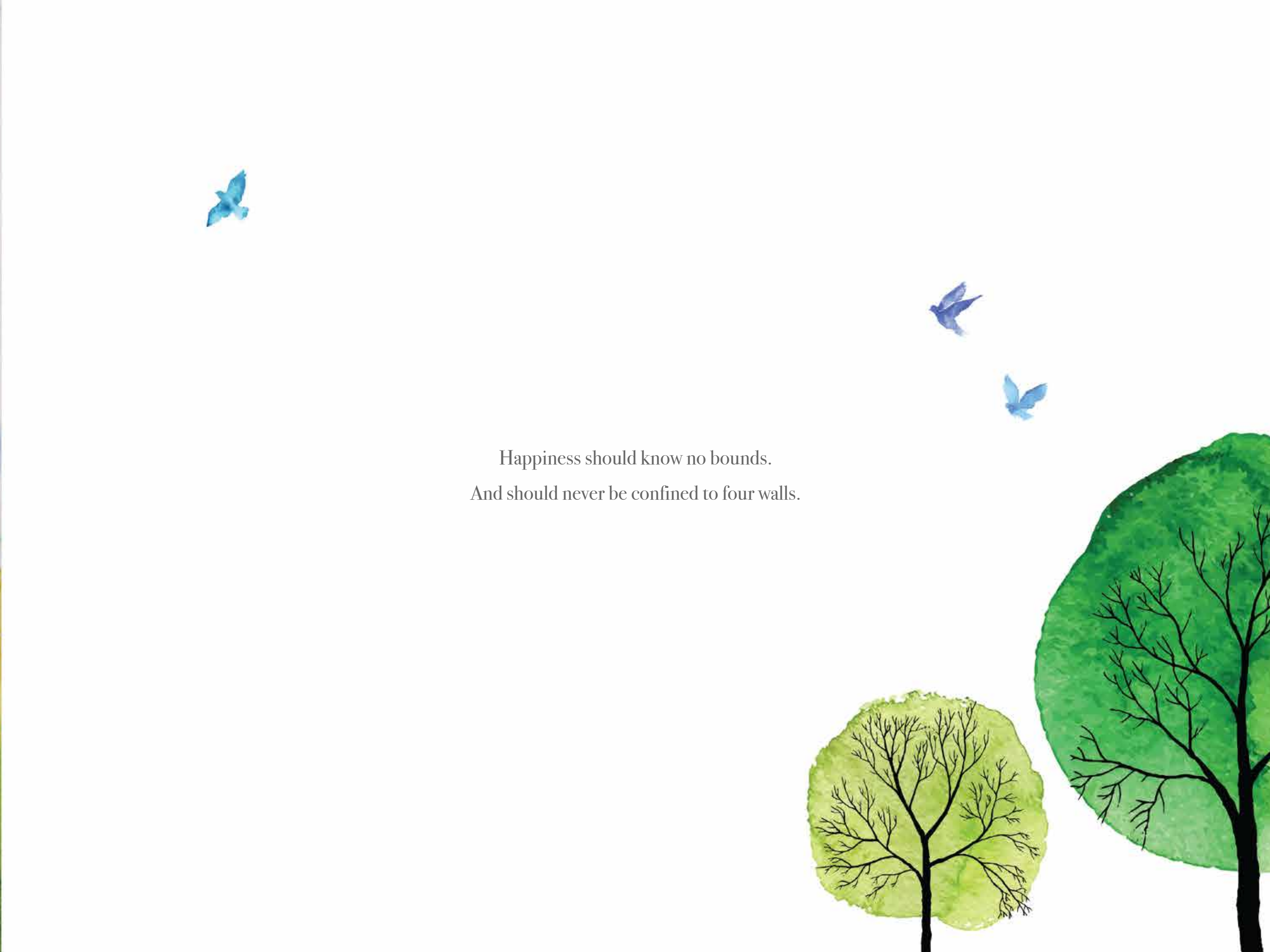
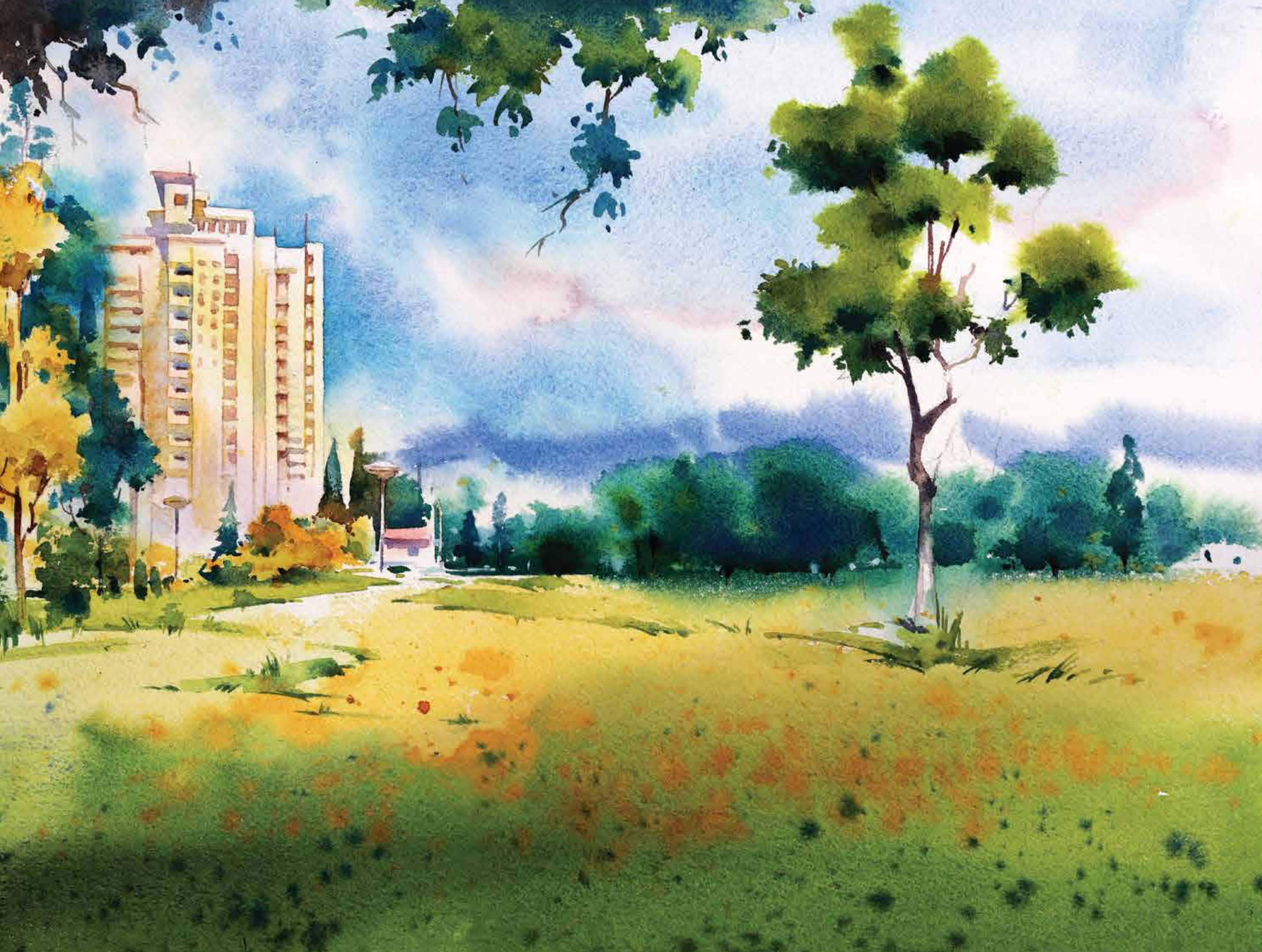




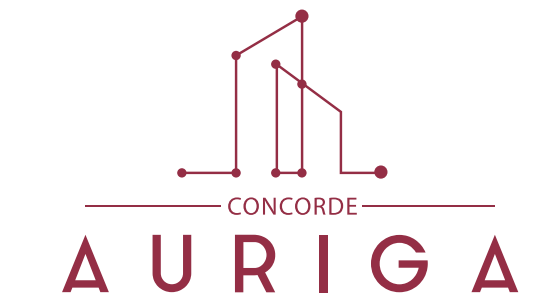


Open up to more at home





Happiness should know no bounds.
And should never be confined to four walls.



Enjoy the true essence of life at KR Puram

Choose a home that opens up a new way of life for you and your family. Say goodbye to concrete jungles and experience the beauty of nature with uninterrupted lake views. With well-planned and spacious homes at KR Puram that give you 90% open spaces, its time for a breath of fresh air from the conventional life you knew.





There should always be light in your home, and your heart.
And just the right amount of warmth.





Live Better

at Concorde Auriga

We've carefully planned and designed these homes so that you get...

More space for your family to live in

Nothing should get in the way of your family's happiness. With more space, your kids can be kids, and you can revisit your childhood as you watch them. With more space, your family can spend quality time together, with more opportunities to create many wonderful memories.



More natural light for a cooler home all day

Designing homes basis an extensive Sun-path analysis has helped us ensure that all homes always have optimal natural lighting. This reduces heat and keeps you comfortable all day. It also saves energy that would be used to keep the home cool.

More time for the things you want

Your well-planned home is smart and energy efficient, helping you get the most out of every day. Its strategic location and excellent connectivity ensures that you save valuable time every day for the things you love; whether it's reading your favourite book with a cup of coffee in the morning or spending that little extra time after work to pursue a hobby you enjoy.



More comfort for an easier life every day

Everything in your Alexa-enabled smart home is right at your fingertips. Electricals and lighting can be controlled remotely. Appliances can be set to function according to your daily routine while learning from your usage habits. Security features like RFID access, Biometric entry and 24x7 CCTV surveillance ensure you're always secure, no matter what you're doing.



Experience Luxuries

A life outside Whitefield can be even more indulgent when you have a host of premium amenities, including some you won't find in it.



Swimming Pool

Turn down the heat with a dip in our swimming pool for some much-needed rejuvenation or even some fun time with loved ones.





Golf Putting



An indulgent hobby is just par for the course at your new home. When you're in the mood for it, come try your hand at putting, on our golf green.





Futsal Court

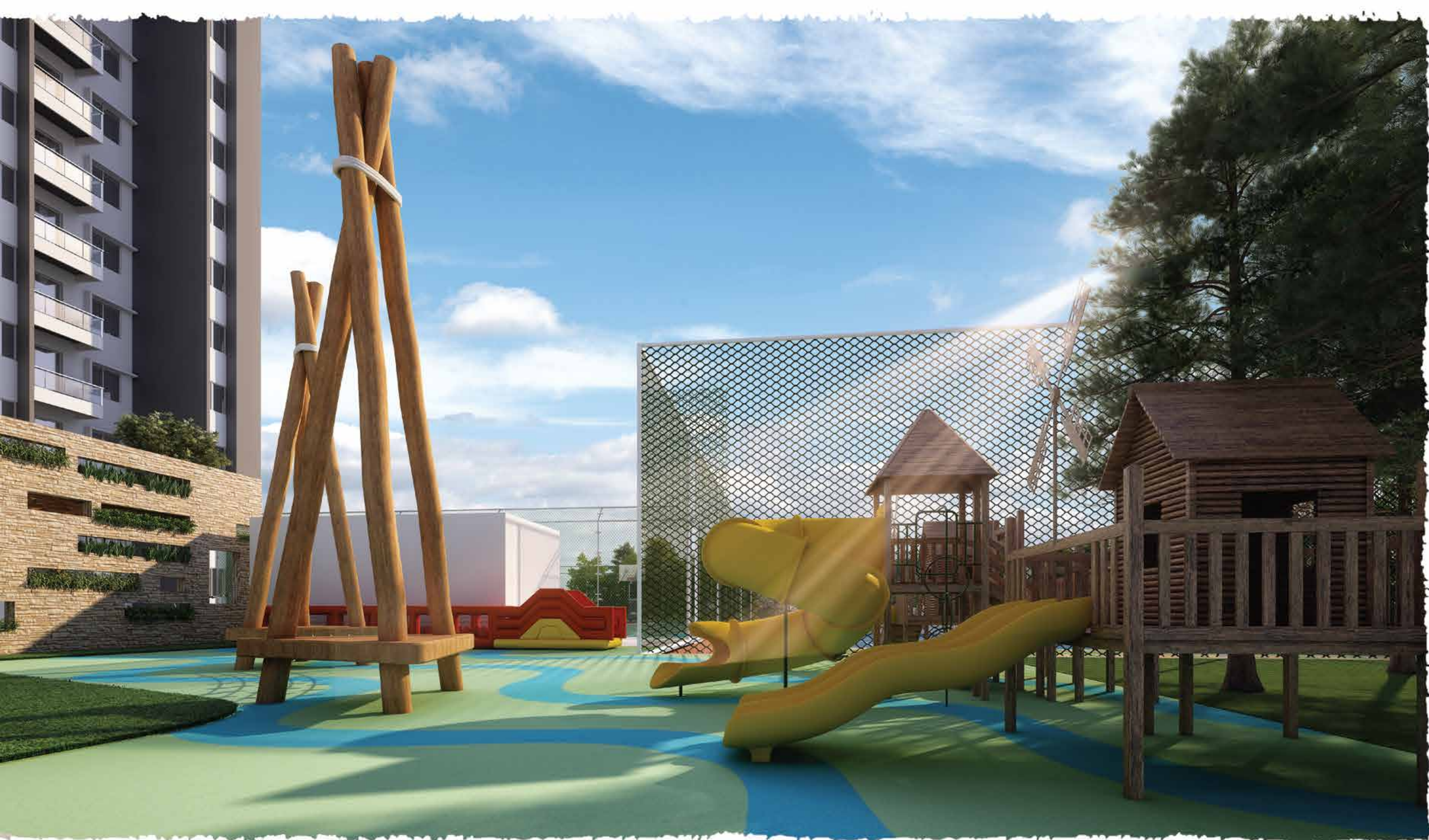
Set hearts racing and your opponents quaking in their boots with your tricks, flicks, and flair. Come have a ball or bring your A-game to our Futsal court.





Amphitheatre

Step out and make your way to the outdoor amphitheatre to witness masters at play or take the stage to showcase your own talent.



Kid's Play Area

Let your kids free to discover the world and relive their imagination in the kid's play area while you enjoy a worry-free time.

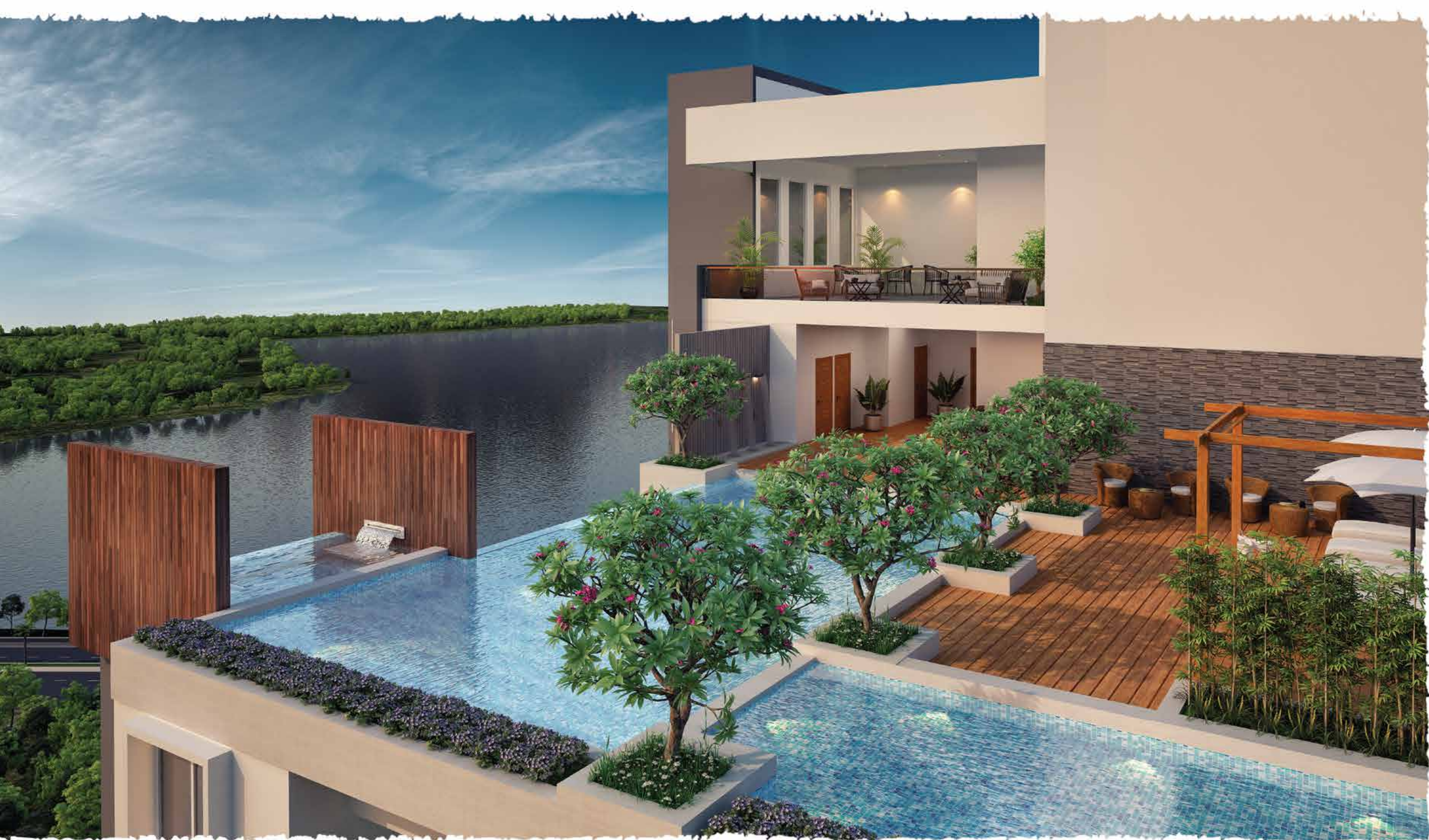




Elevate Life

When you're in the mood for some rest or recreation, our Clubhouse on the 24th floor is the perfect place to be.

Evolve
by Concorde



Infinity Pool

Step in to the infinity pool and enjoy unprecedented heights of comfort with scenic vistas all around you.

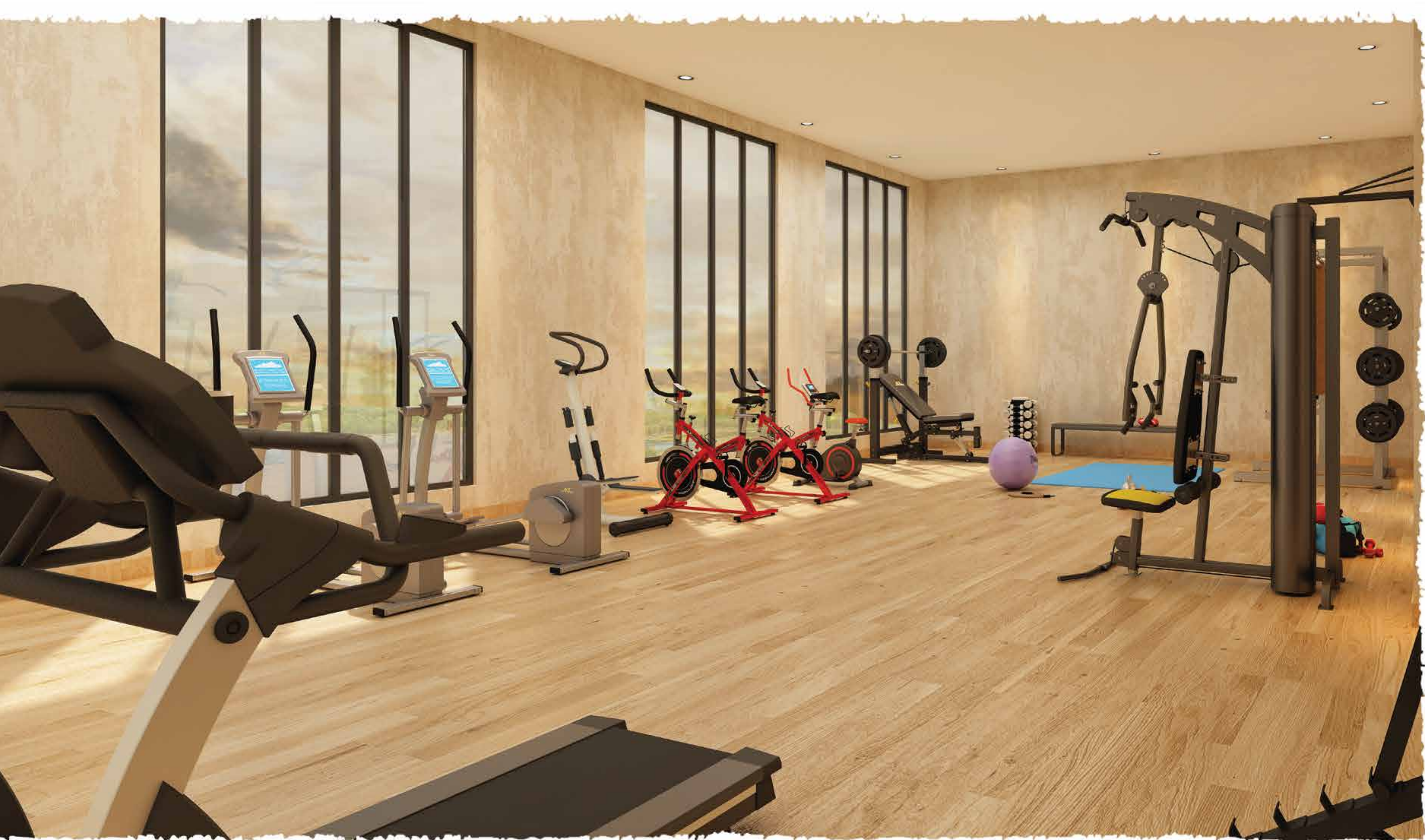




Lake View Deck

Whether it's the comfort of beautiful views or the wonderful feeling of a calm breeze grazing your skin, come over to the deck for some moments of inspiration from nature.





Gymnasium

Get back in shape or better it with our state-of-the-art gymnasium that's fully equipped to transform your health and your life.



Evolve
by Concorde



Double-Height Sports Court



Fulfil your love for sports with twice the fun at our double-height sports court for badminton and squash.





Mini Theatre

Bring out the popcorn and sit back to unwind and watch your favourite flicks at the mini theatre.





Banquet Hall

Throw the best parties and leave your guests truly satisfied with your hospitality at our banquet hall that's perfect for both planned occasions and surprises



Indoor and Outdoor Amenities

Everything you need to make your life just as enjoyable as one in Whitefield, is right here, at your doorstep.



Rooftop Clubhouse with Infinity Pool



Meditation Deck



Health Club with Sauna



Billiards



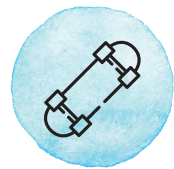
Lake View Deck



Mini Theatre



Senior Citizen Corner



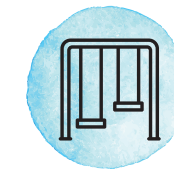
Skateboard Park



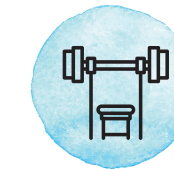
Indoor Game Room



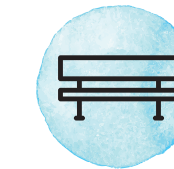
Golf Putting



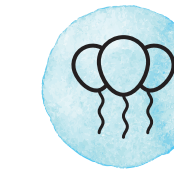
Kid's Play Area



Outdoor Gym



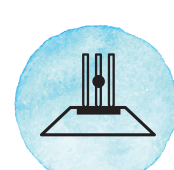
Meeting Plaza



Multi Purpose Hall with Pantry



Rock Climbing



Cricket Pitch



Family Pavilion



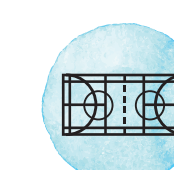
Food Court



Jogging Track



Cycling Track



Multi Play Court



Utilities

Laundry

Guest Rooms

Cycle Dock



Sustainability

Dry and Wet Organic Waste Converter

Sewage Treatment Plant

Rainwater Harvesting

Green Building Concept



Security

Communications Room

Surveillance Cameras



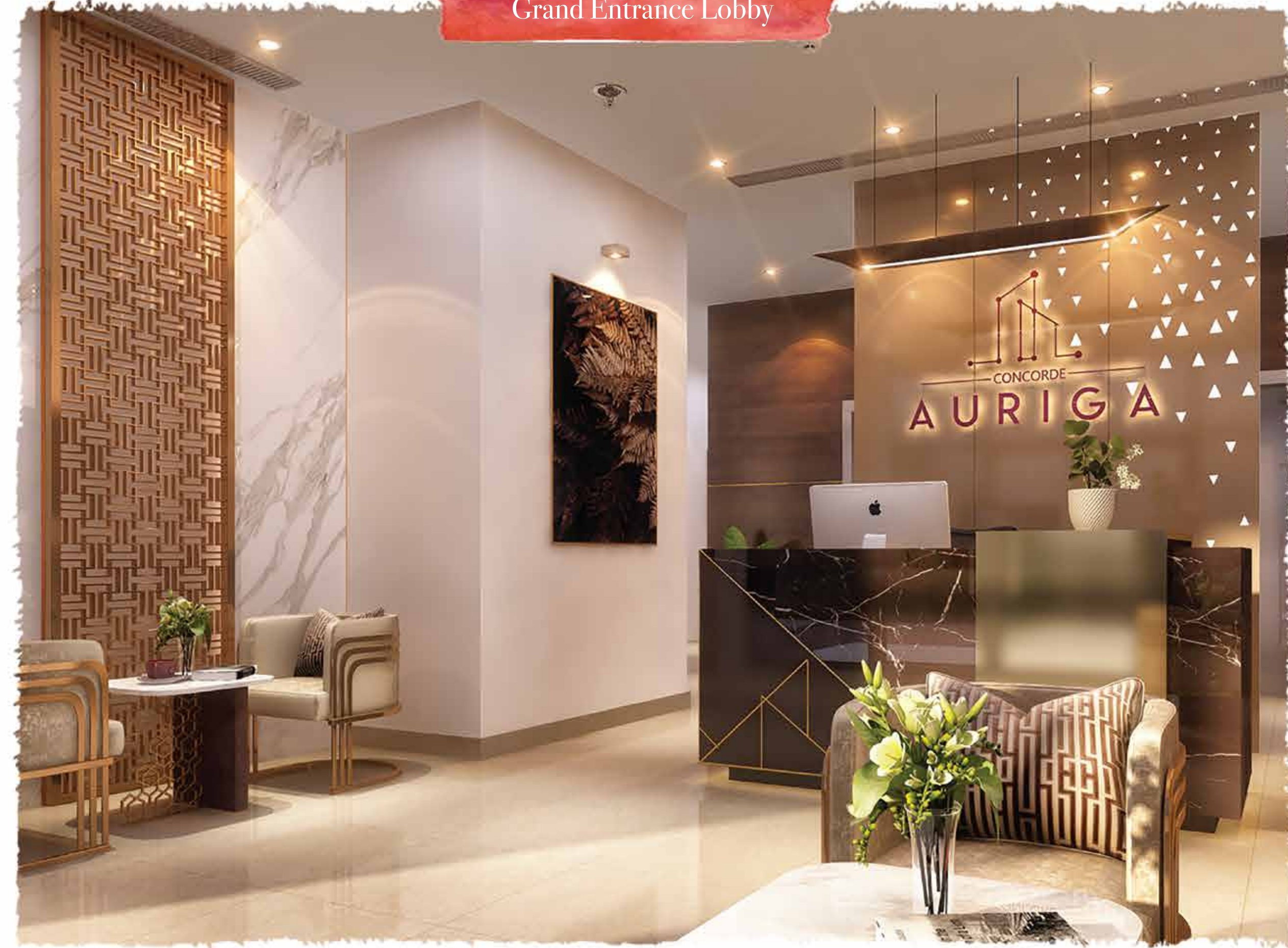
Live Elegantly

Wake up every day in a home that gives you reasons to stay and puts a smile on your face every time you come back.

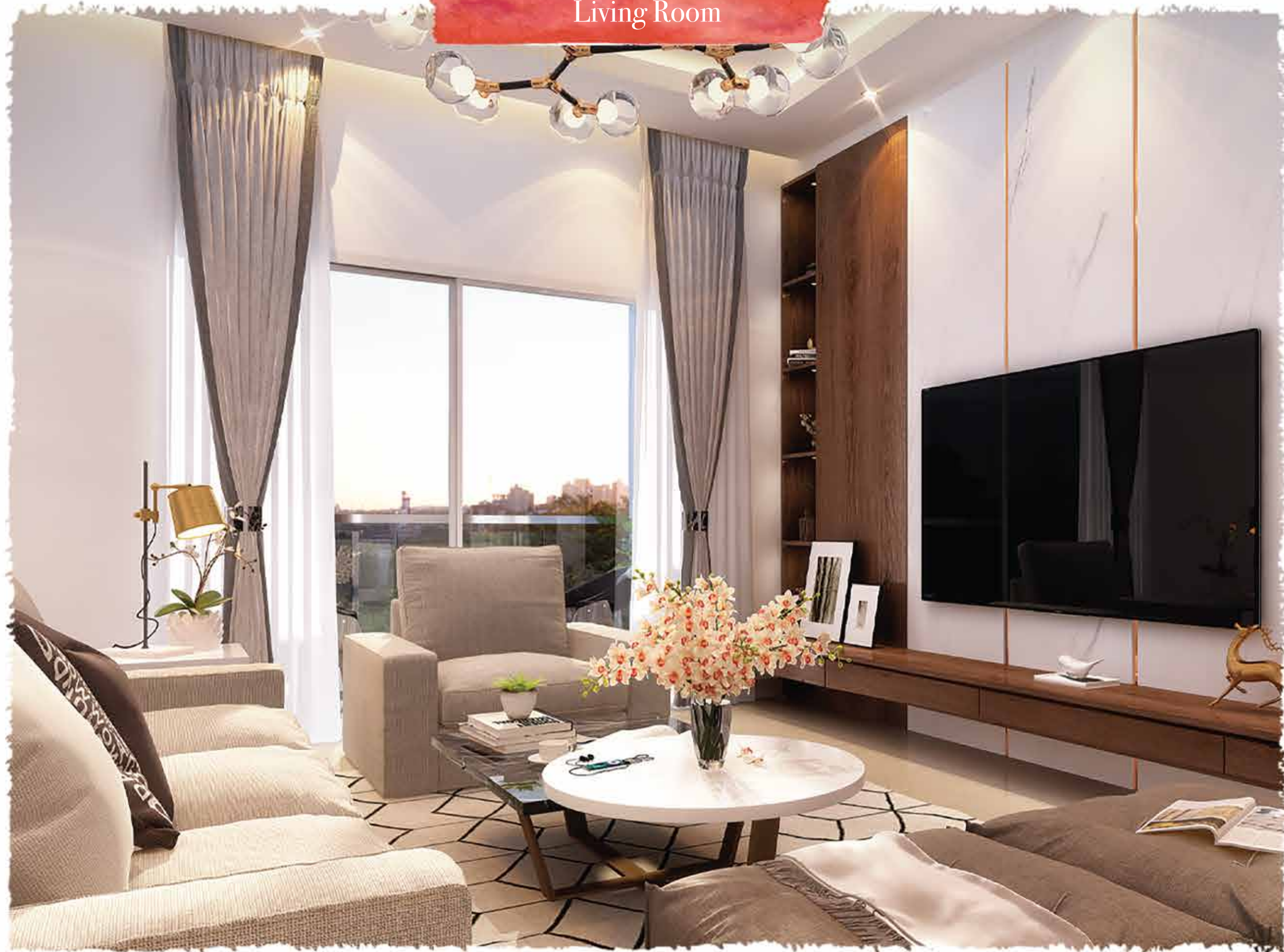
Clock Tower



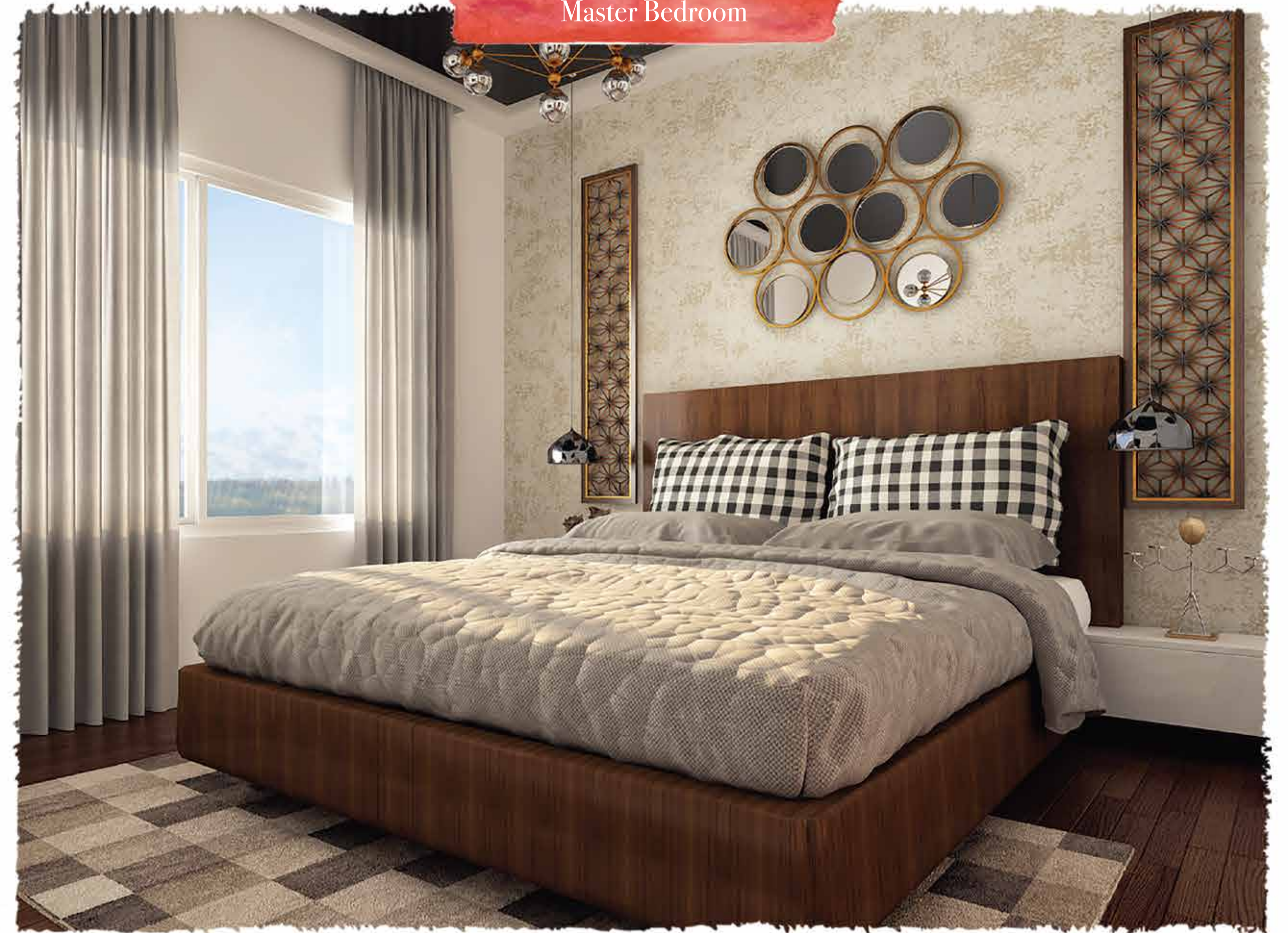
Grand Entrance Lobby



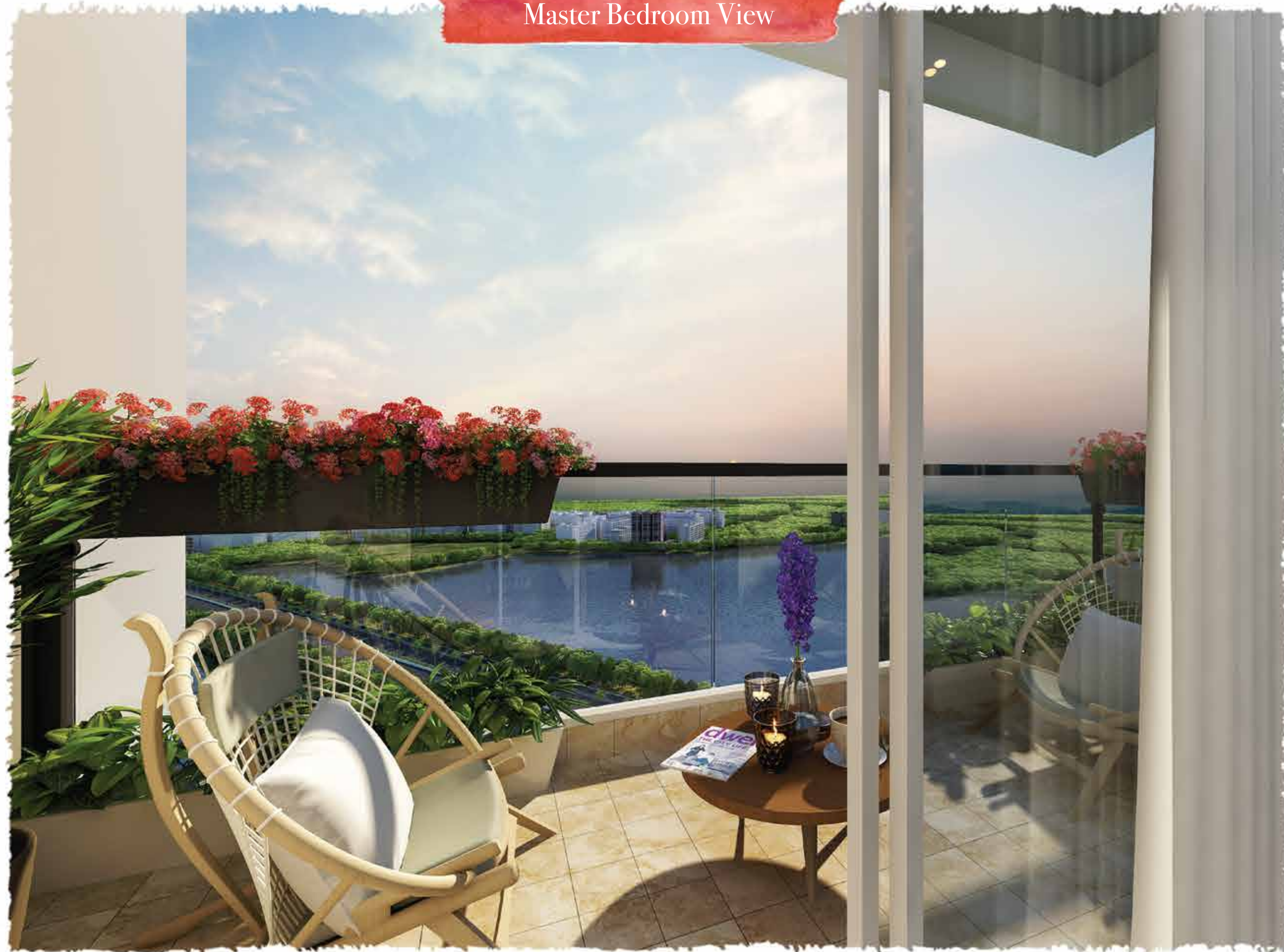
Living Room



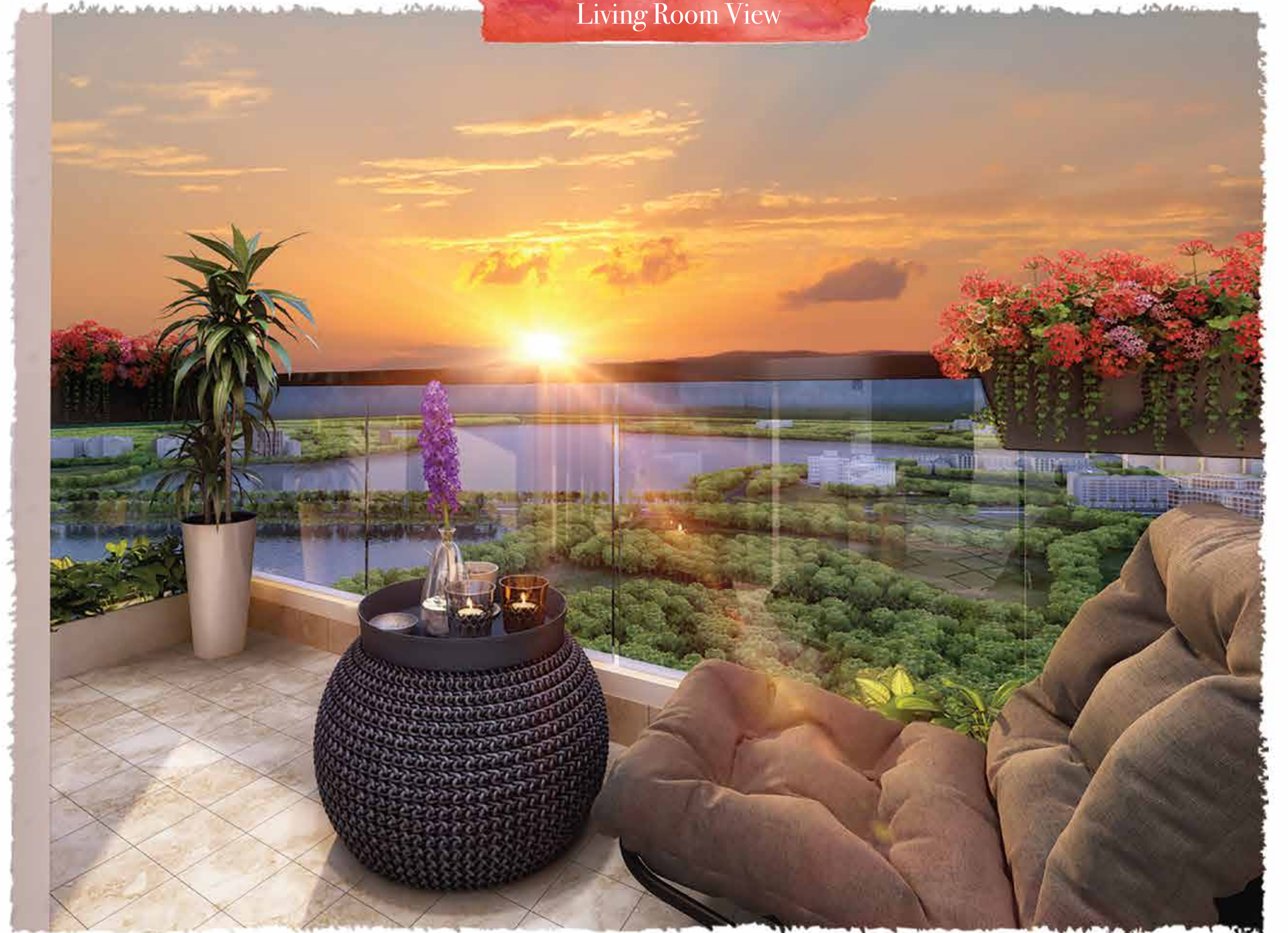
Master Bedroom



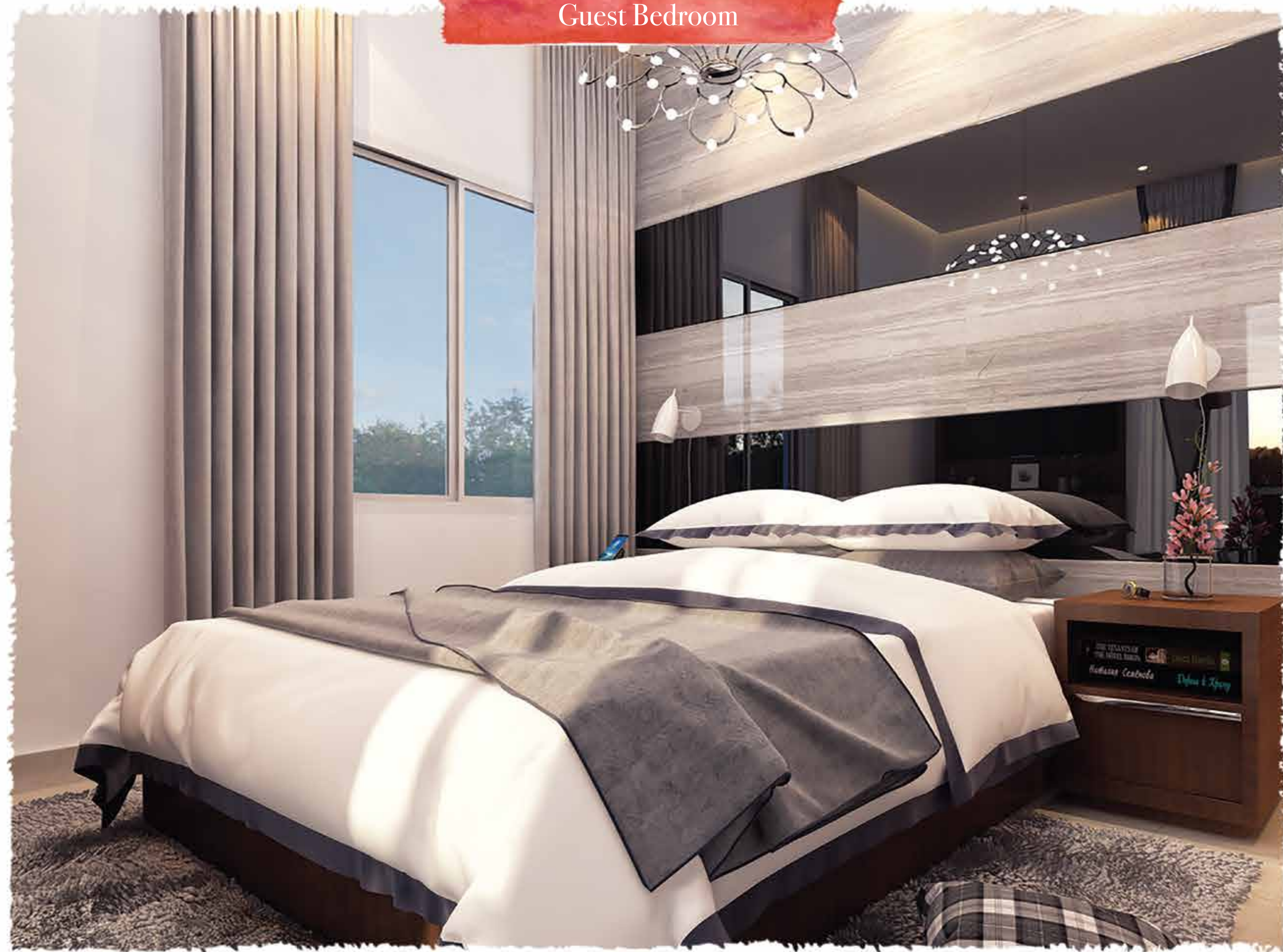
Master Bedroom View



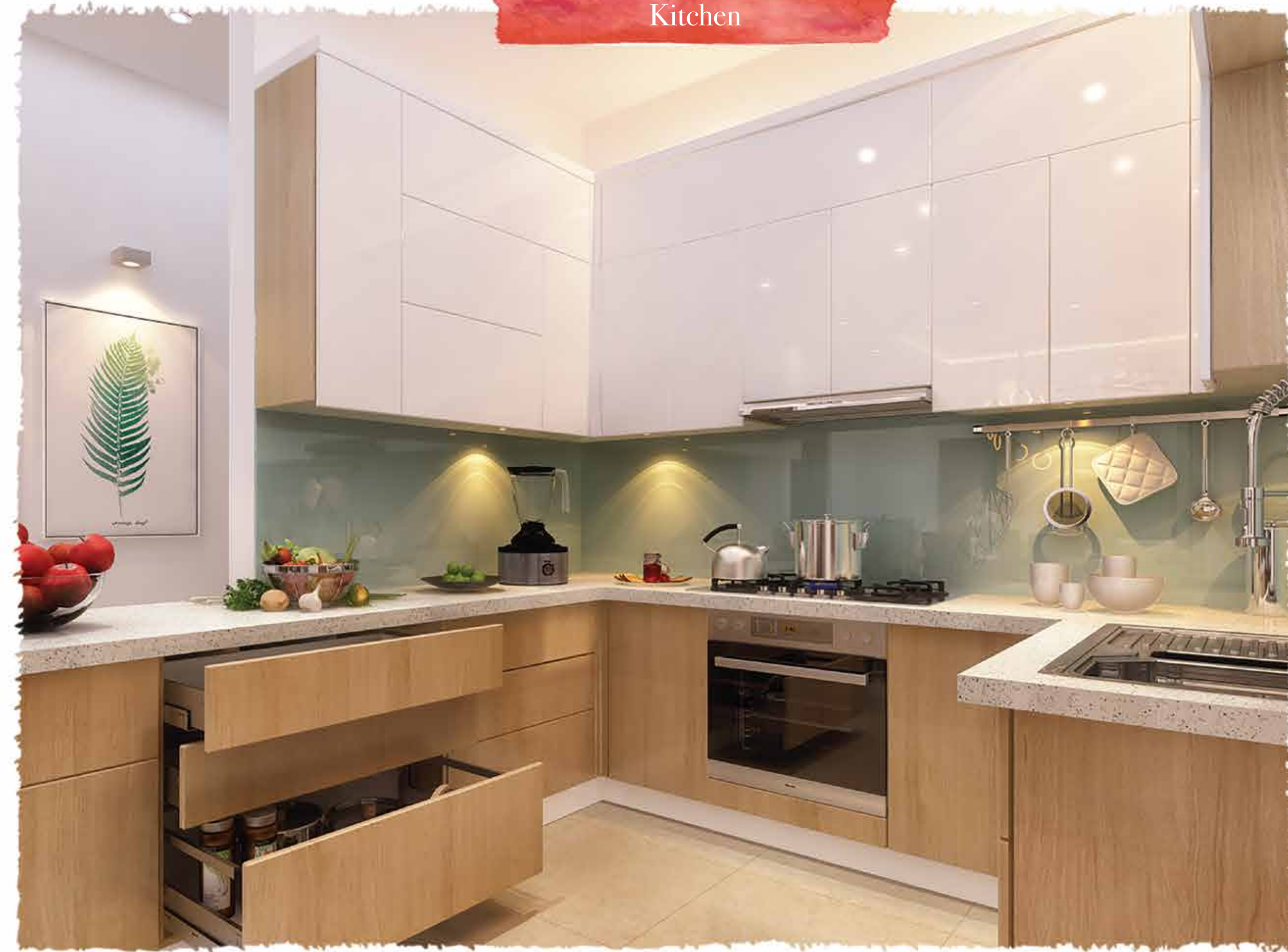
Living Room View



Guest Bedroom



Kitchen





Premium Features

Large and regal 8-foot doors at the main entrance and for each spacious room with a height of 10 feet from floor to ceiling.



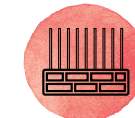
Elegant UPVC windows in each room to give you a beautiful view of the world outside.

Built on the Aluminium Formwork system that gives your home better structural stability and optimal space efficiency.



Bathrooms with designer ceramic tiles for the wall and flooring with a false ceiling, imported floor mounted EWC and wash basin, with Jaquar or equivalent plumbing.

Specification



STRUCTURE

- System-driven shear wall construction or RCC framed structure with SBM



WALLS

- RCC walls – 160 mm, 200 mm and as per structural design
- SBM walls – 100 mm, 150 mm, and 200 mm wherever necessary



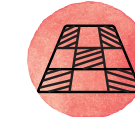
EXTERNAL WALLS - Asian, Berger, Dulux or equivalent external emulsion

WINDOWS - UPVC windows



BATHROOMS

- Good quality designer ceramic tiles for wall and floor as per ISI standards
- Wall tiles up to false ceiling height or a sunken slab bottom
- Imported high-quality floor-mounted EWC and wash basin
- Jaquar or equivalent plumbing accessories



FLOORING

- Good quality 600 x 600 mm vitrified flooring in living, dining and bedroom
- Anti-skid ceramic tiles for balconies and utilities
- Polished granite flooring in corridors with texture finish for first 3 floors at external staircase and remaining floors with concrete floor finish



DOORS

- Main door of 3'6" X 10' teak frame and modular veneer shutters of 8' height with 2' height ventilator, and 40 mm thick polish and architrave
- Internal door of 3' x 8' hardwood frame and polished 35mm thick modular shutters
- Toilet doors of 2'9" x 8' with one side polished and other side painted or modular
- Utility door in UPVC

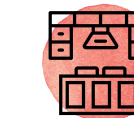


SECURITY - Compound wall enclosure with round-the-clock security



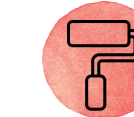
ELECTRICALS

- Anchor or equivalent modular switches
- 2.5 kw for 2 BHK and 4 kw for 3 BHK
- DG backup for all common areas, 1.5 kw for 2.5 BHK & 3 BHK homes and 1 kw for 2 BHK
- Sufficient electrical points in all rooms, as per the consultant's design
- Provision for telephone point in the living room
- Provision for AC and TV point in living and master bedrooms



KITCHEN

- Designed to suit modular kitchen requirements
- 20 mm thick black granite platform, with single bowl sink – material to be supplied and kept inside the flat
- Tiles dadoing up to 2' above granite platform
- Provision for exhaust fan



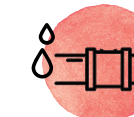
PAINTING

- Internal walls with Acrylic Emulsion – Asian, Berger, Dulux or an equivalent



ELEVATORS

- Johnson, Kone, OTIS or equivalent elevators in each block that are accessible from car park in the basement



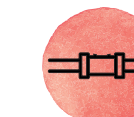
WATER SUPPLY

Water from primary water treatment plant



SURROUNDINGS

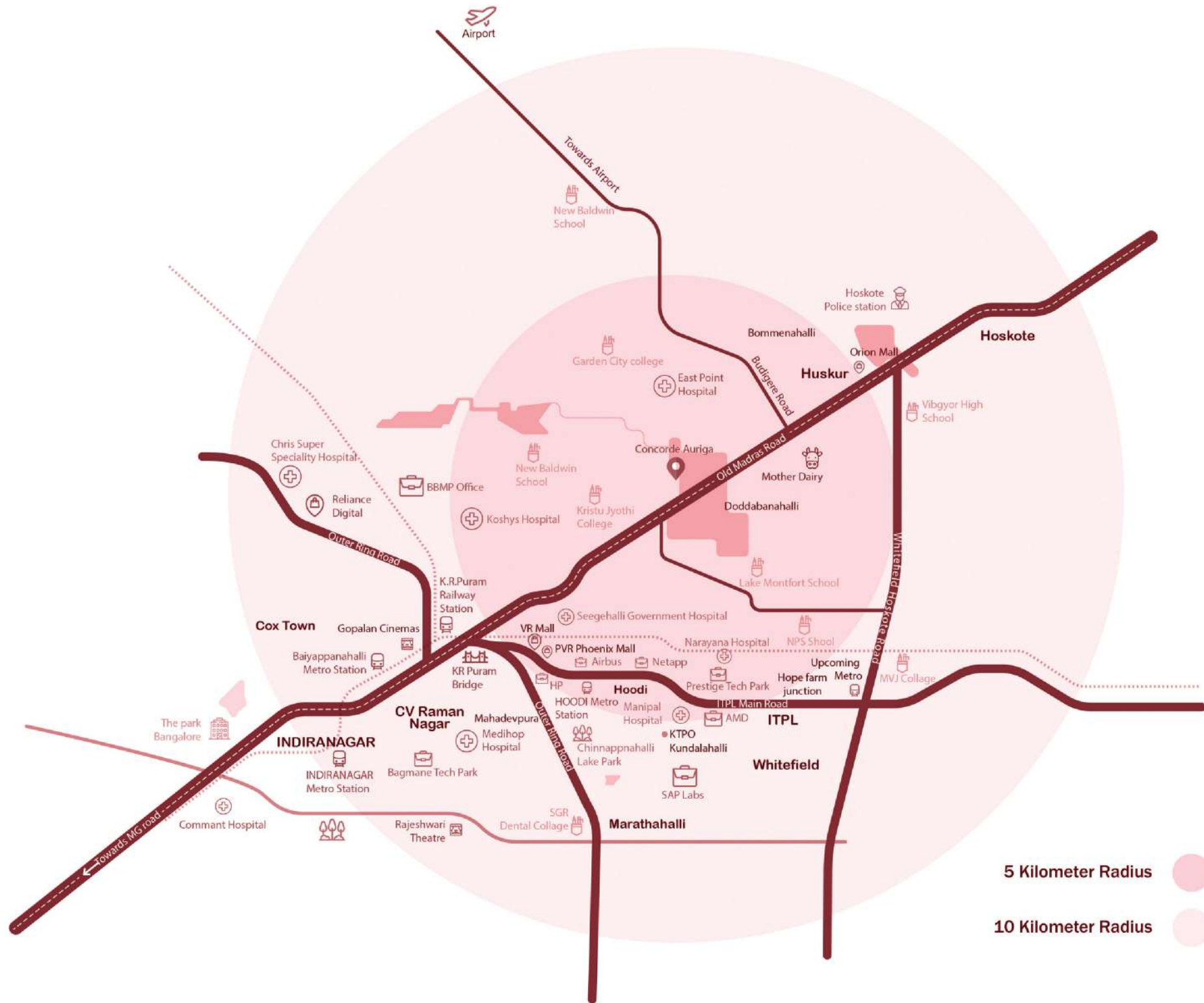
Extensive landscape



GAS LINE

Provision shall be provided for piped gas line

Location Map



5 Kilometer Radius
10 Kilometer Radius

Master Plan

- 1 Grand entrance area
- 2 Security section with watch tower
- 3 Entry court with grand sculpture
- 4 Beautiful flower bed
- 5 Surface level car parking zone
- 6 Deck with observation area
- 7 Deck with meditation zone
- 8 Peaceful corner for senior citizens
- 9 Full-size amphitheatre
- 10 Private golf green
- 11 Full-size tennis court
- 12 Multi-sport court
- 13 Playing area for kids
- 14 Party area with lawn
- 15 Food court
- 16 AI Fresco dining area
- 17 Seating area for groups
- 18 Entrance for sports courts
- 19 Drop-off area
- 20 Futsal and football court
- 21 Skating rink
- 22 Docking area for cycles
- 23 Premier sculpture
- 24 Courtyard for families
- 25 Toddler lot
- 26 Lap pool with part covering
- 27 Kid's swimming pool
- 28 Swimming pool deck
- 29 Pavilion for families
- 30 Real-size cricket practice net
- 31 Rock climbing area
- 32 Cycling and jogging tracks
- 33 Outdoor multi-purpose gym
- 34 Exclusive services
- 35 Dry organic waste converter
- 36 Wet organic waste converter

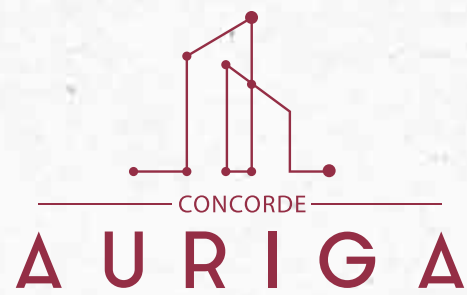


The Concorde History.
A History of Building Homes.
A History of Creating Value.



The Concorde Group was set up in 1998 with a vision to create sustainable value for stakeholders and deliver customer delight. In almost 21 years, the company has developed over 21 million square feet of real estate space, consistently delivering satisfaction to customers through its innovative offerings and professionalism in every aspect of its dealings. Known for building long-lasting value, the leadership at Concorde persistently strives towards delivering performance that makes a difference. A Concorde homeowner is one who looks for high quality, aesthetics and future growth.

We deliver this with trust, transparency, and fairness. Your search for a good home ends here.



SITE OFFICE

Medahalli, On OMR Road, KR Puram, Bengaluru - 560 049 | 080 6131 4525

CORPORATE OFFICE

#46/A, 1st Main Road, 3rd Phase, JP Nagar, Bengaluru - 560 078 | Boardline: 91-80-6651 2999

www.concordegroupp.in

PRM/KA/RERA/1251/446/PR/190704/002647