

VG INFRA
CROSSWIND

RING ROAD, BARAVE, KALYAN (W)


VG Infra, New Ring Road, Barave, Kalyan (West), Pin No. 421301

All statements, literature & depictions in the materials are not to be regarded as a statement or representations of the fact. The specifications, images & other details herein are only indicative and the Developer and the Owner reserves its right to change any of these in its discretion subject to grant of approval from relevant authorities. The printed material does not constitute an offer or commitment of any nature between The Developer / Owner and these recipients. The Developers / Owner's website and other advertising and publicity material include Artists' impressions indicating the anticipated appearance of completed development. No part of the materials shall constitute a representation or warranty, cost, design, facilities and specifications may be subject to change without notice.




The project has been registered via
VG CROSSWIND MahaRERA
Registration No. P51700051960

VG INFRA



ADDING TO THE
GLORY OF
NEW KALYAN



THE SHAAN OF NEW KALYAN

A BRIEF PROLOGUE DETAILING OUR SHAAN'S BACKSTORY

In the world of real estate, magic happens at the crossroads. It is the point where destiny and opportunity intersect. Ask any true real estate investor and they would tell you that where paths converge, endless possibilities unfurl and that is the best place to invest.

This is the juncture of life's grand avenues, a haven that connects the dots of urban living where dreams are built and futures take shape. It's more than just a location, it's the essence of connectivity and opportunity.

Welcome to the crossroads of your aspirations, a place where neighbourhoods unite, commerce thrives and landmarks are born.

Step into our project, a place where a new chapter in Barave's future begins.

Embrace the potential, seize the advantage, and write your own story. Where roads coincide, dreams take flight.

Artistic Impression



PRESENTING



CROSSWIND

RING ROAD, BARAVE, KALYAN (W)



Welcome to this upcoming landmark on New Ring Road, a focal point of high aspirations.

This magnificent gem of Neoclassical architecture is set to be a testament to the harmonious co-existence of successful commerce and cozy living. A place where commercial vitality meets lofty residential standards.

It is a testament to the dynamic soul of modern living, a place where dreams are born, business thrives, and lifestyles are elevated to their most sublime form.

SHAAN OF NEW KALYAN



2 & 4 BHK River view apartments with larger carpet area

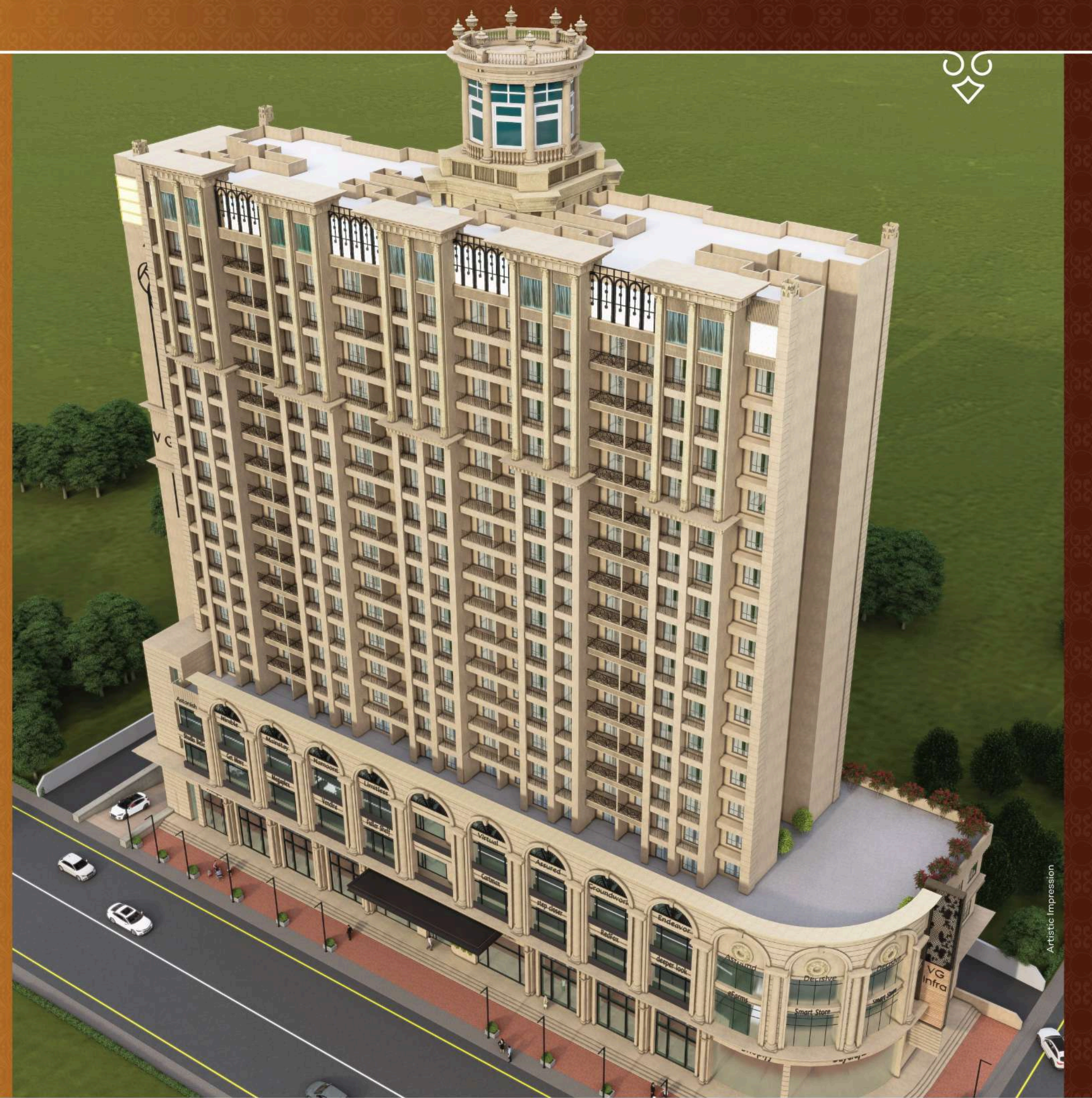
17 Storey tall, a combination of Commercial and Residential

FIRST EVER PROJECT IN KALYAN TO OFFER

10.5 Feet Floor to Ceiling height - Homes

22 Feet Floor to Ceiling height - Commercial zone

12 Feet Floor to Ceiling height - Offices on the 1st & 2nd floor



VIBRANT
COMMERCIAL
ZONE

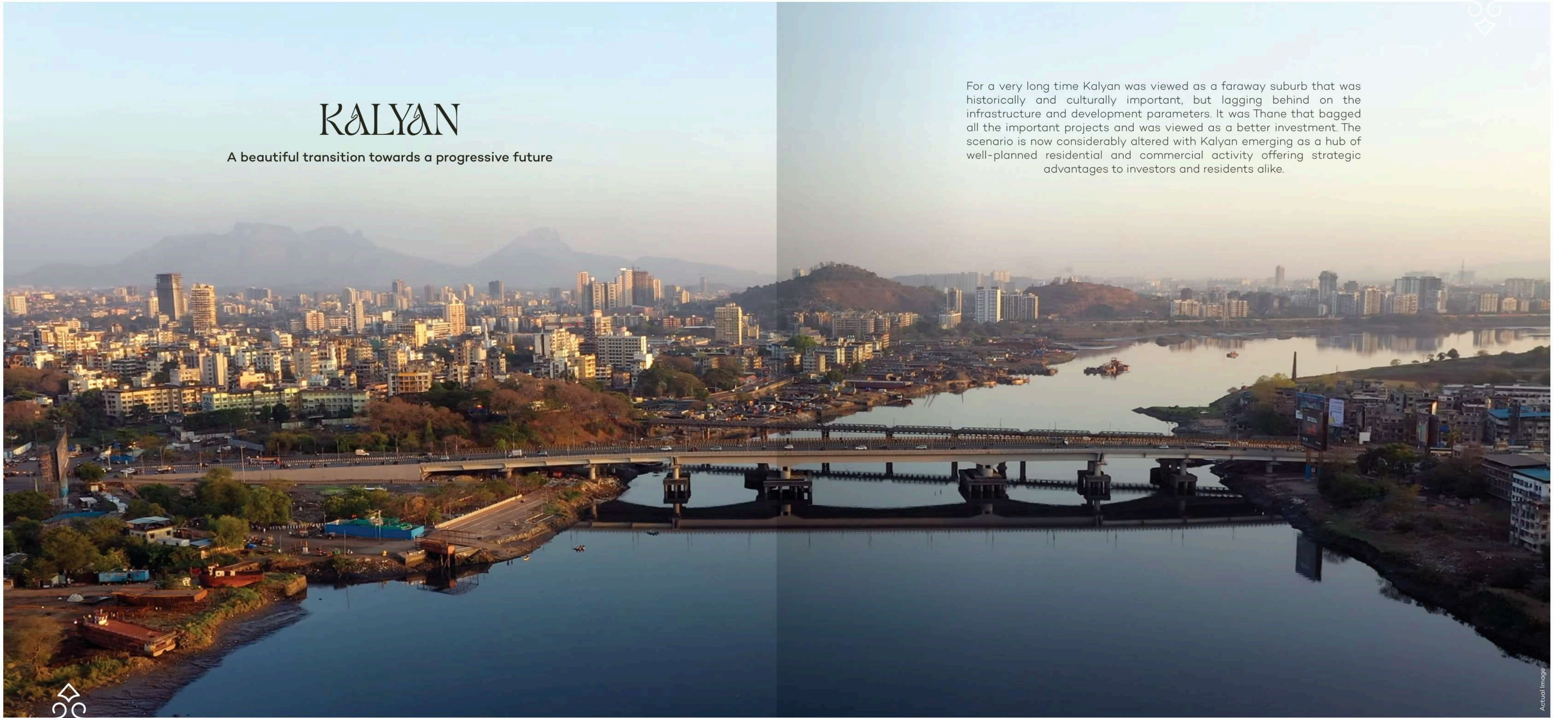


Artistic Impression

KALYAN

A beautiful transition towards a progressive future

For a very long time Kalyan was viewed as a faraway suburb that was historically and culturally important, but lagging behind on the infrastructure and development parameters. It was Thane that bagged all the important projects and was viewed as a better investment. The scenario is now considerably altered with Kalyan emerging as a hub of well-planned residential and commercial activity offering strategic advantages to investors and residents alike.



NEW KALYAN
IN THE MAKING



Kalyan is recognised as a Smart City & gearing to outperform other Mumbai neighbourhoods.



Metro line 5 is a 24.9 - kilometre elevated line that connects Thane - Bhiwandi - Kalyan and has 17 stations.



Upcoming University sub campus & planned BITS Kalyan campus with The Wharton School of Business & the Kellogg School of Management.



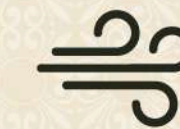
26 - kilometre Ring road in Kalyan, connecting Dombivli West to Titwala village.



Upcoming Shilphata flyover and the Mumbra - Panvel Road underpass will further enhance connectivity.



The area of our project holds a lot of promise in terms of growth & investment potential



The area around this chowk is very windy and the layout of the project is such that it has a flow of winds from all directions. This makes our project very well ventilated and gives it a good vibe.

CONNECTIVITY ADVANTAGES OF SHAAN OF NEW KALYAN

Close to prominent schools & colleges

- BK Birla College
- A.K M Agarwal College
- Cambria School
- Poddar School
- Vibgyor School

Medical Requirements

- Wellness Forever Medical
- Kalyan Vedant Hospital
- J. K. Hospital
- Swaas Hospital
- Ayush Multi-Specialty Hospital

Shopping Needs

- Dmart
- Reliance Store
- Croma
- Smart Bazaar

Gardens & Sports Area

- Jhulelal Chowk & Garden (KDMC)
- Ring Road Garden
- Ring Road Barave Playground

Security & Civic Assistance

- Khadakpada Police Station

Tourist Attraction

- Durgadi Fort

Easily accessible by road & from the local railway station of Kalyan. A place which will attract heavy foot traffic and vehicular movement, advantageous for retail establishments and businesses.



SHAANDAAR AMENITIES

More than 30 amenities spread on 14000 sq.ft. of area on 17th Floor. It includes Gym, Kids Play Area, Yoga Room, Spa Wellness Room, Study Room, Art & Craft Room, Mini Theatre & many more only for residents of a single tower

Temple, Community Hall, Jogging Track and Landscaped Garden

Vastu compliant project with 9 homes on each floor

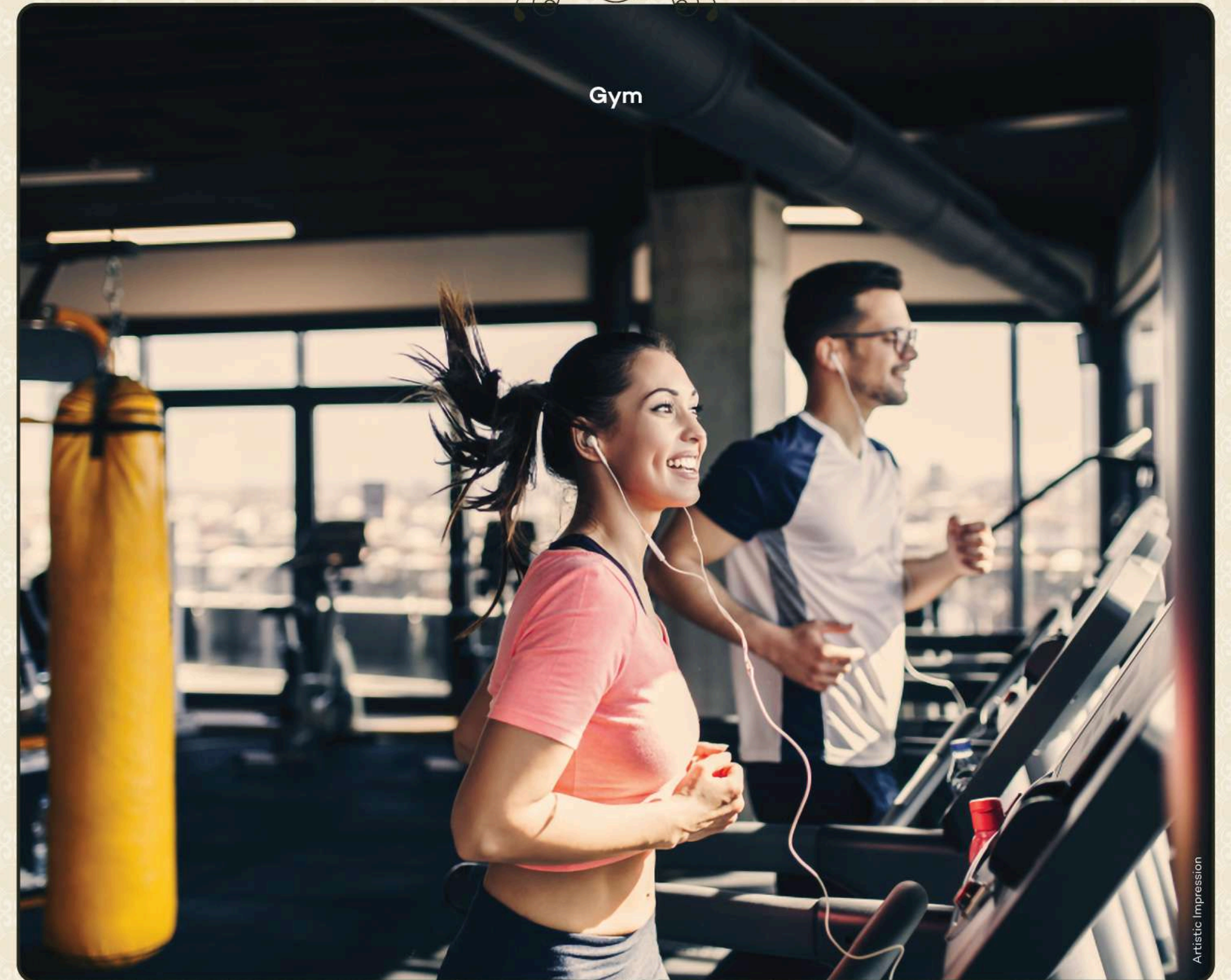
Dedicated car parking for residential as well as commercial

Storm water drains to avoid water clogging during heavy rainfall

Rain water harvesting to replenish ground water level

Solar Panels System

Earthquake resistant structure



Artistic Impression



Kids Play Area



Artistic Impression



Yoga Room



Artistic Impression



Spa Wellness Room



Artistic Impression



Mini Theatre

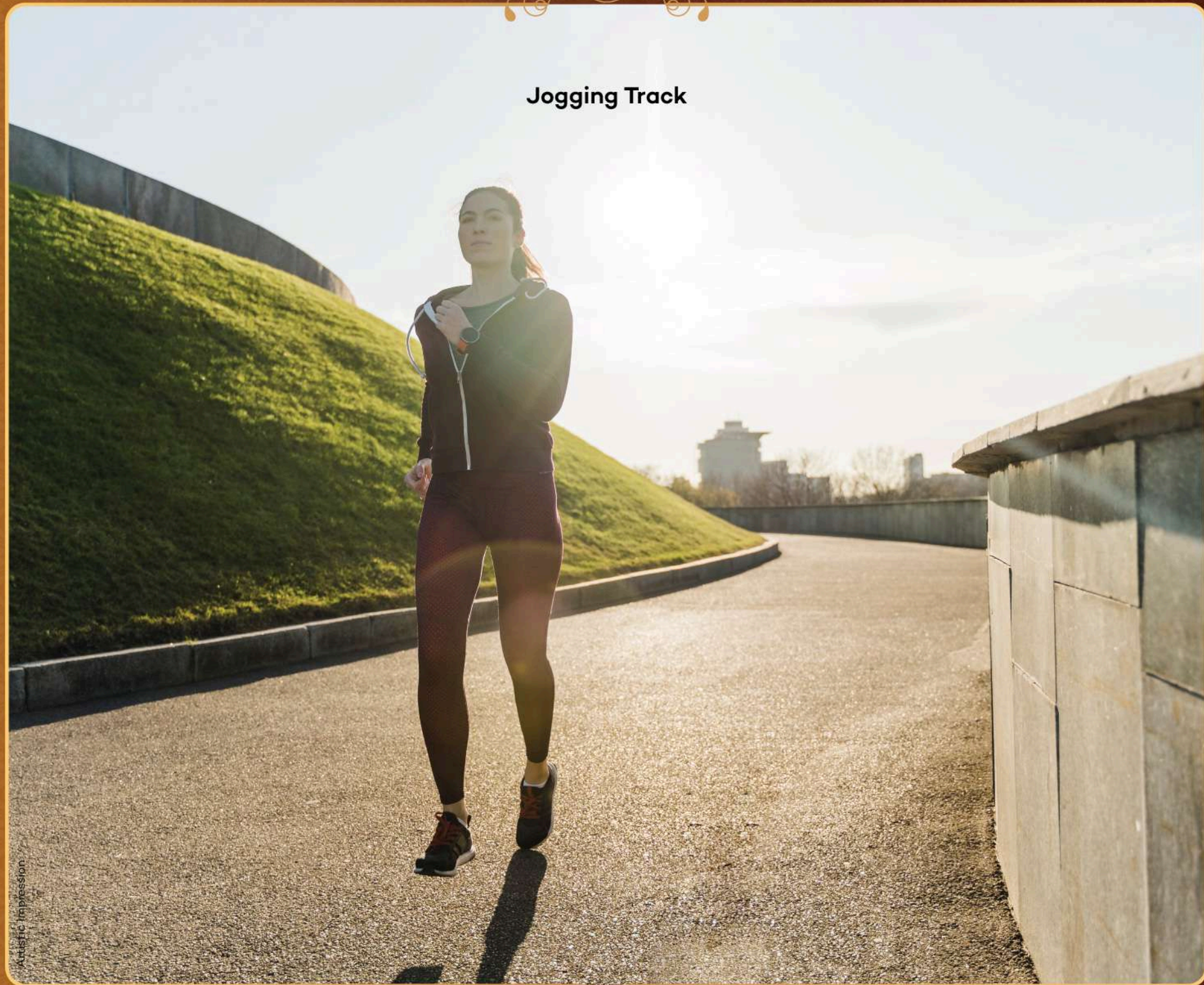


Artistic Impression





Jogging Track



Artistic Impression



Community Hall



Artistic Impression





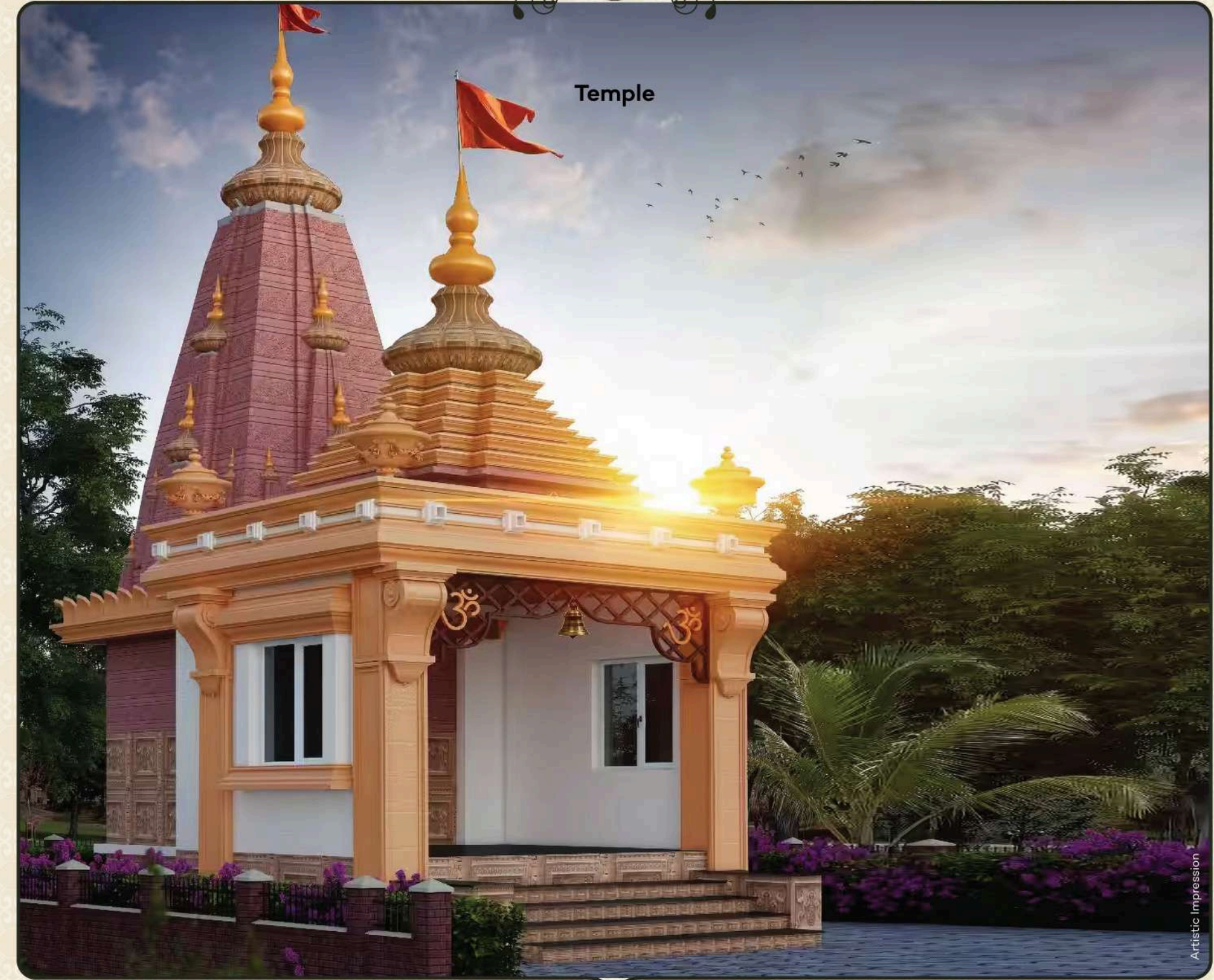
Landscape Garden



Artistic Impression



Temple



Artistic Impression





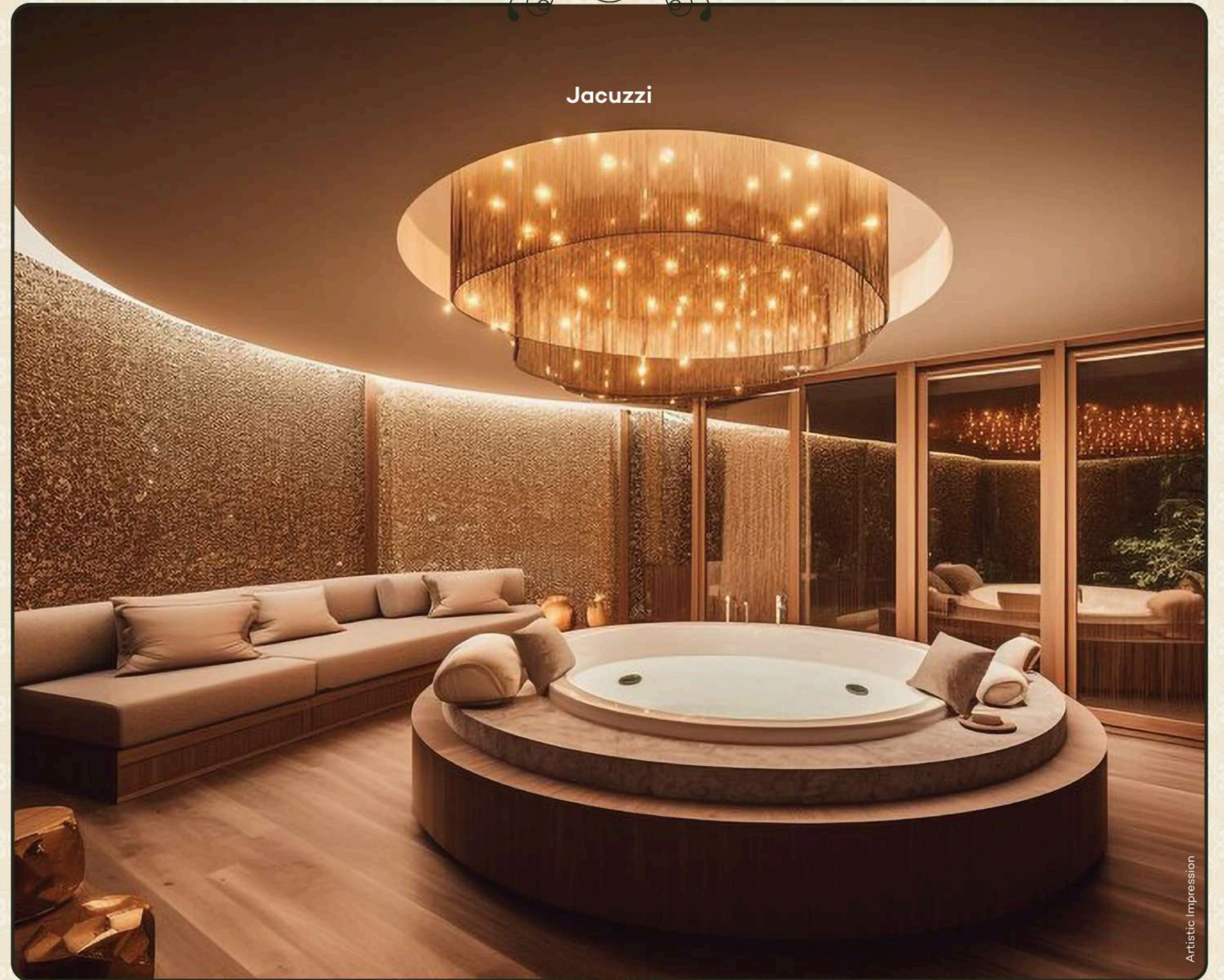
Indoor Games



Artistic Impression



Jacuzzi

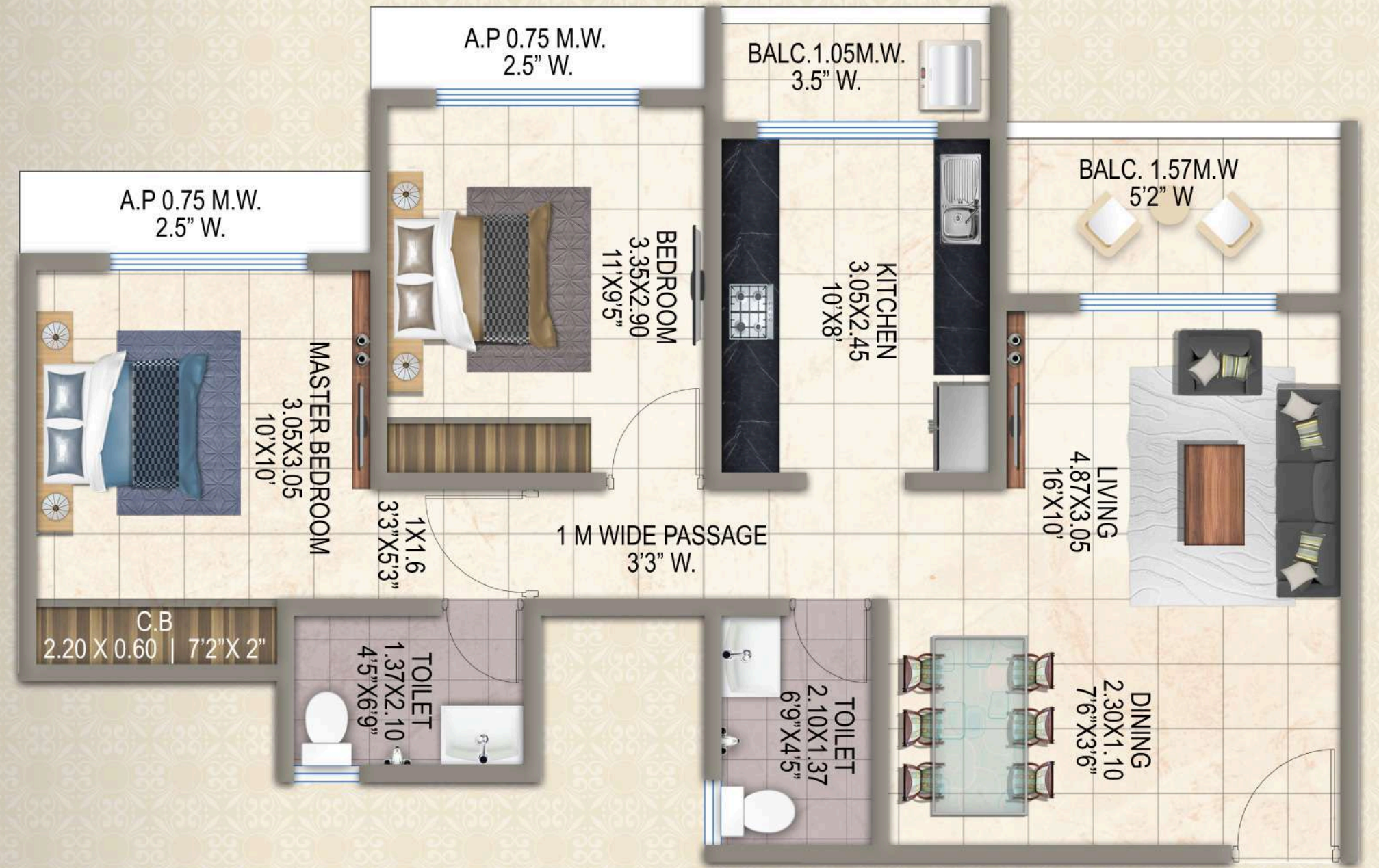


Artistic Impression



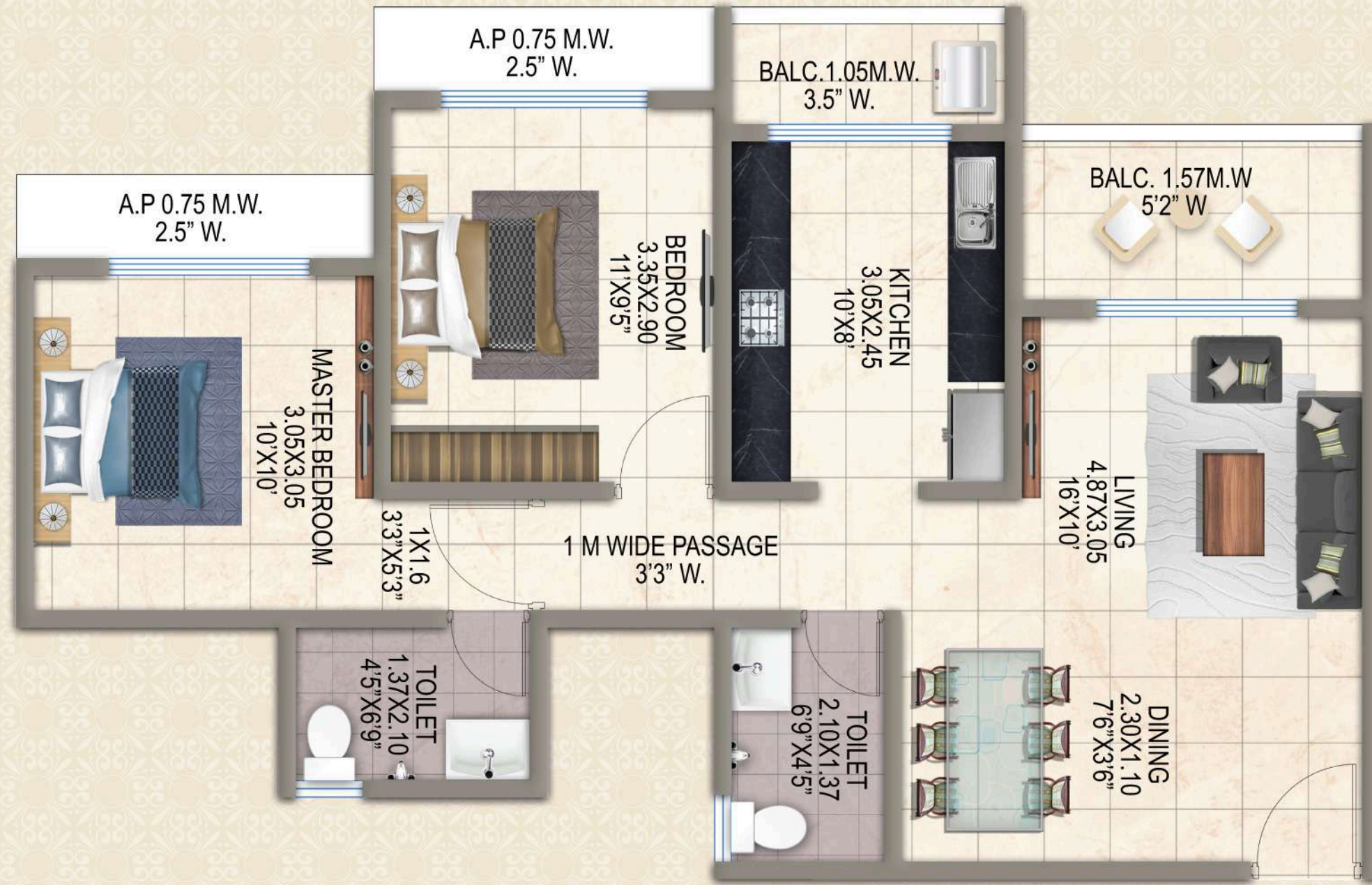
CONCEPTUAL
UNIT PLANS

UNIT PLAN 1

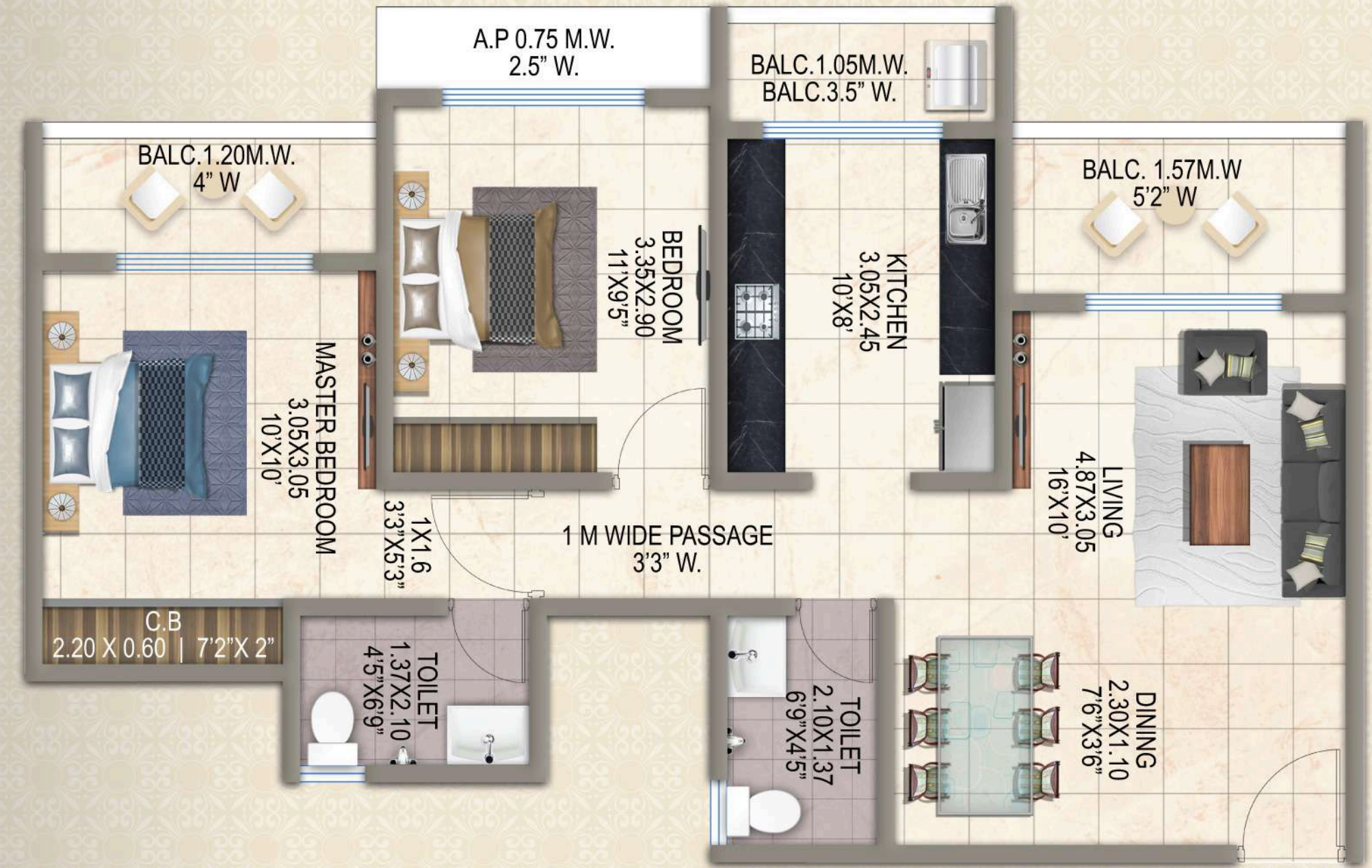




UNIT PLAN 2



UNIT PLAN 3



VG INFRA
THE FORCE BEHIND
THE SHAAN
OF NEW KALYAN

VG Crosswind is a promising real estate project by VG Infra Pvt. Ltd. launched by a passionate duo of brothers, Mr. Vicky L Ganatra & Mr. Saurabh L Ganatra, who are determined to create value in the dynamic world of real estate. With a passion for transforming spaces, they are eager to leverage market insights and innovative strategies to help clients find their perfect place.

Committed to providing exceptional service and building lasting relationships with clients, this project is set to change the face of Kalyan & add to the development of the region.

Passion meets action to create a legacy...

