

A Project by :
**LAXMI
BUILDERS**

A RERA REGISTERED PROJECT
P51800028489

MARKETED BY :



JYOTI

Where Aesthetics meets Purpose
Your Dream to stay in Kalina, is now a reality.



#artisticimage



A Brand new niche stand-alone building comprising of 2 BHK Apartments that are finely crafted and specified to provide homes with modern amenities.

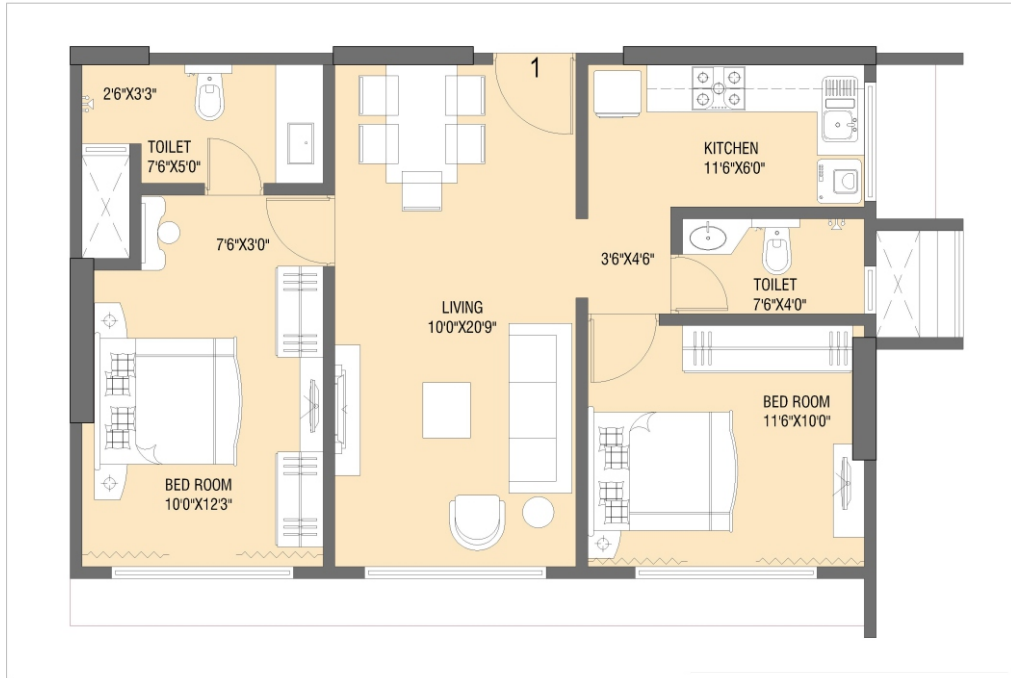
READY TO MOVE IN LUXURIOUS
2 BHK APARTMENTS STARTING AT 1.99CR*

SALIENT FEATURES

- » Design Architect REZA KABUL
- » Warm Shell with Kitchen Cabinets
- » Mechanized Parking System
- » CCTV Camera in Compound Area
- » Modern Fire Fighting System
- » High Speed Schindler Elevators
- » Double Heighted Lobby
- » Natural Light in all the Apartments



LAYOUT

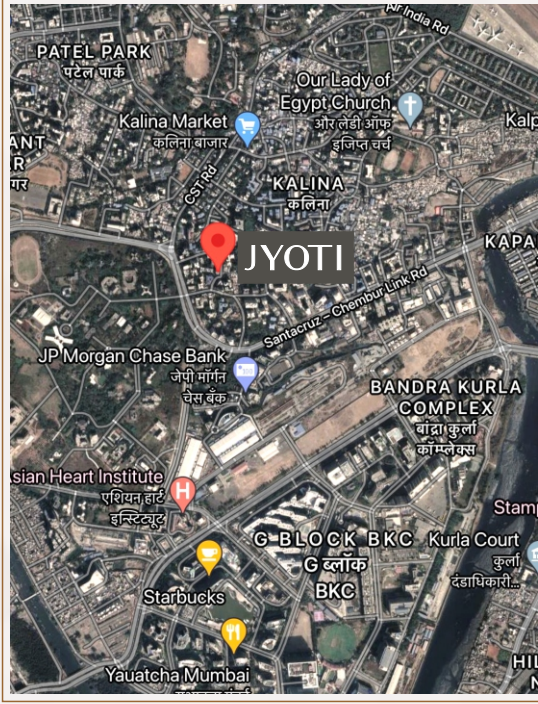


FLAT TYPE A - 665 RERA CARPET

LAYOUT



**FLAT TYPE B -
702 RERA CARPET**



- » 5 Minutes Drive to Bandra Kurla Complex
- » 10 Minutes Drive to the Airport
- » Walking Distance to Mumbai University Main Gate

MARKETED BY :



Call / Whatsapp : +91 9820235762

E-Mail : connect@vijaygwalani.com

Website : www.laxmibuildersjyoti-kalina.com

SITE OFFICE

Unit No. 101, Jyoti, Manipada Road, Opp. Mumbai University Gate,
Kalina, Mumbai - 400 098

MARKETING HEAD OFFICE

Office No.1, New Apollo, 14th Road, Near NM Medical,
Khar (West), Mumbai - 400 052