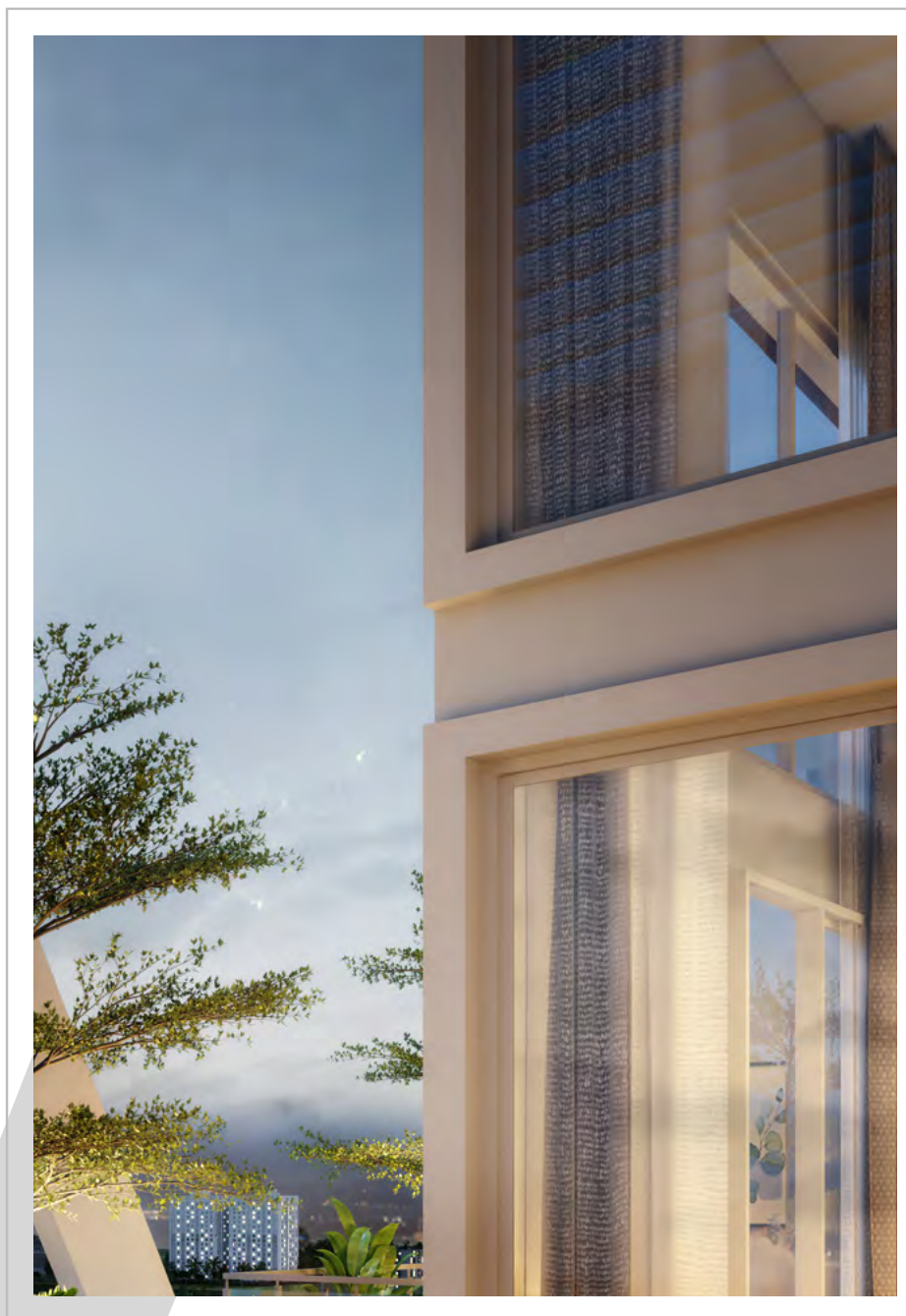


📍 JAKKUR, ON AIRPORT ROAD

**MANA
VERDANT**

**DON'T JUST
CHANGE YOUR
HOME...**



PREMIUM SKY VILLAS & APARTMENTS

CHANGE
YOUR
PERSPECTIVE.





CLUB HOUSE
MANA VERDANT

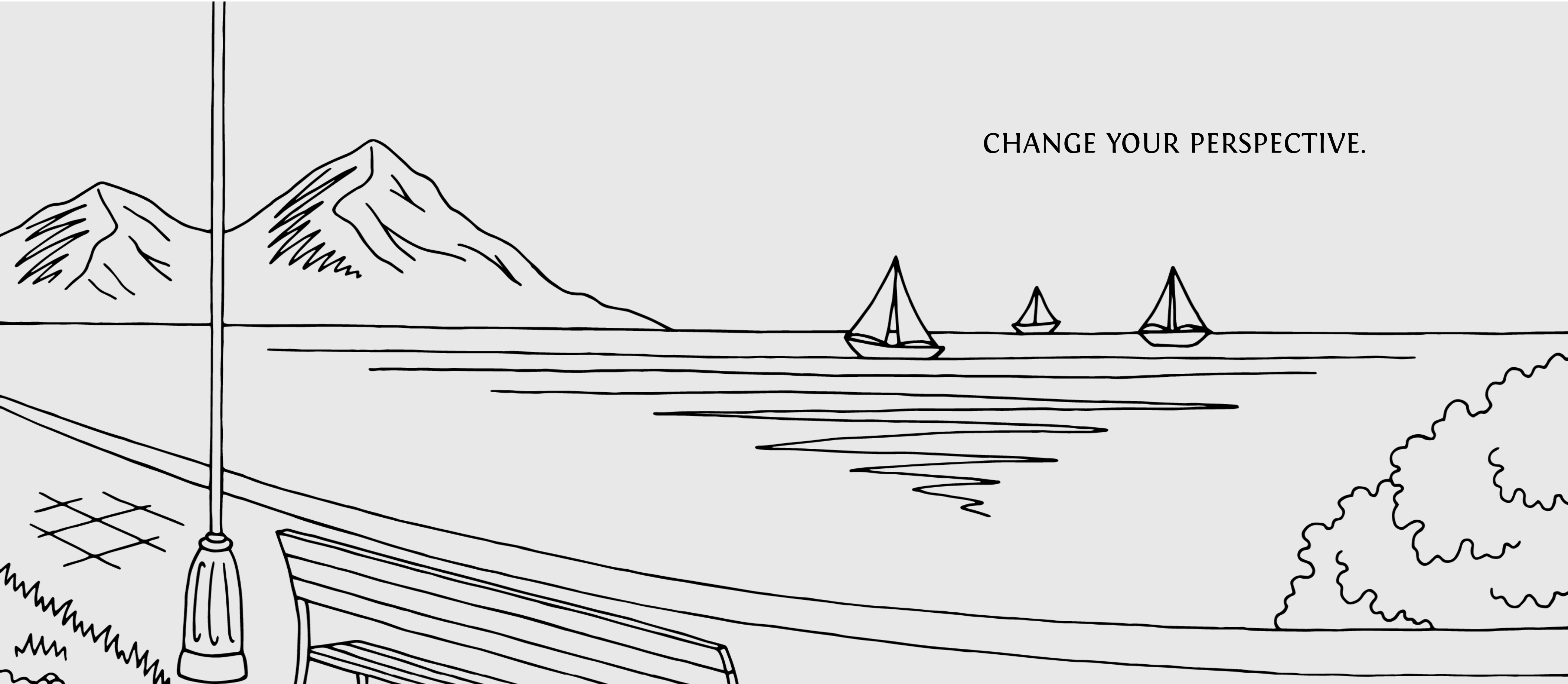
CLIMBING THE
CORPORATE
LADDER
HAS ITS
REWARDS.

May we recommend a beautiful view, lush greens, sky high luxury and a lifestyle that complements your rising stature at work. Where 'ME' time and family time are in harmony and serenity & tranquility are poetry for the inner soul.



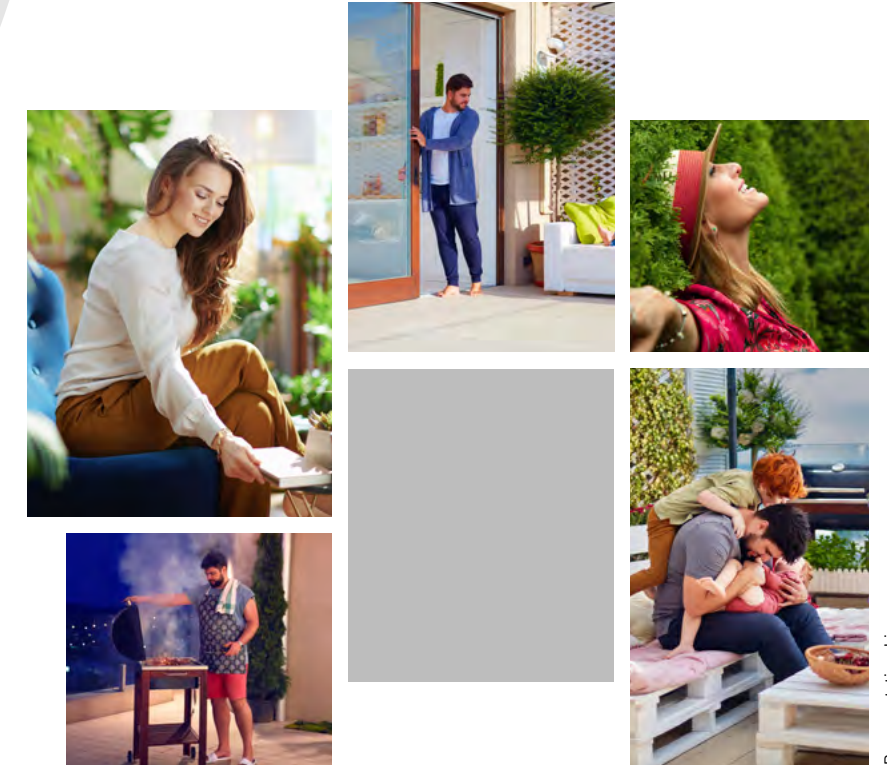
Relive your childhood by making your kids colour this landscape sketch with bright hues and tints.
Colour it and tag it to our social media to win exciting goodies.

CHANGE YOUR PERSPECTIVE.





These images are artistic renders. Actuals may vary



Representational images

Imagine this. A horizontal expanse of naturally sloped green. And on this, a vertical tallest tower of green landscaped large open balconies.

Add the two up and then add the extra dimension of being up in the sky on the 18th floor, and you get the feel of Mana Verdant Sky Villas, that tower above everything. And premium apartments that are as beautiful as the serene surroundings, with large vertical open gardens. Designed with greenery and nature, to enhance your quality of life.

Isn't it time to change your perspective? From horizontal gardens to vertical gardens. From family centric to individual centric. From 100% bricks & mortar to 70% open spaces.

From balconies to balcony gardens. From friendly to eco friendly. From compatibility to sustainability. From basics to aesthetics. We could go on and on...why not discover these changing and challenging perspectives for yourself?



Relive your childhood by making your kids colour this landscape sketch with bright hues and tints. Colour it and tag it to our social media to win exciting goodies.

CHANGE YOUR MINDSET.

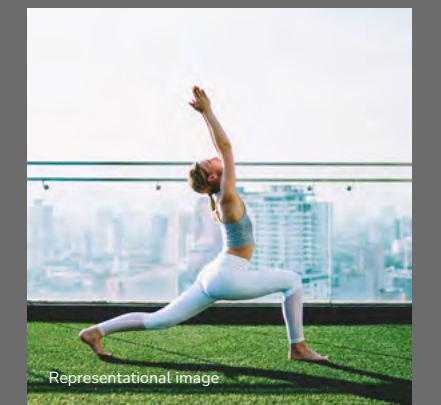




You owe this gift of a lifetime to yourself. And your loving family. All those sacrifices, late nights, red eye flights, now is the moment to take everything a level up. Or shall we say, 18 levels up, where your sky villa awaits you. Spacious, airy, bright, classy.

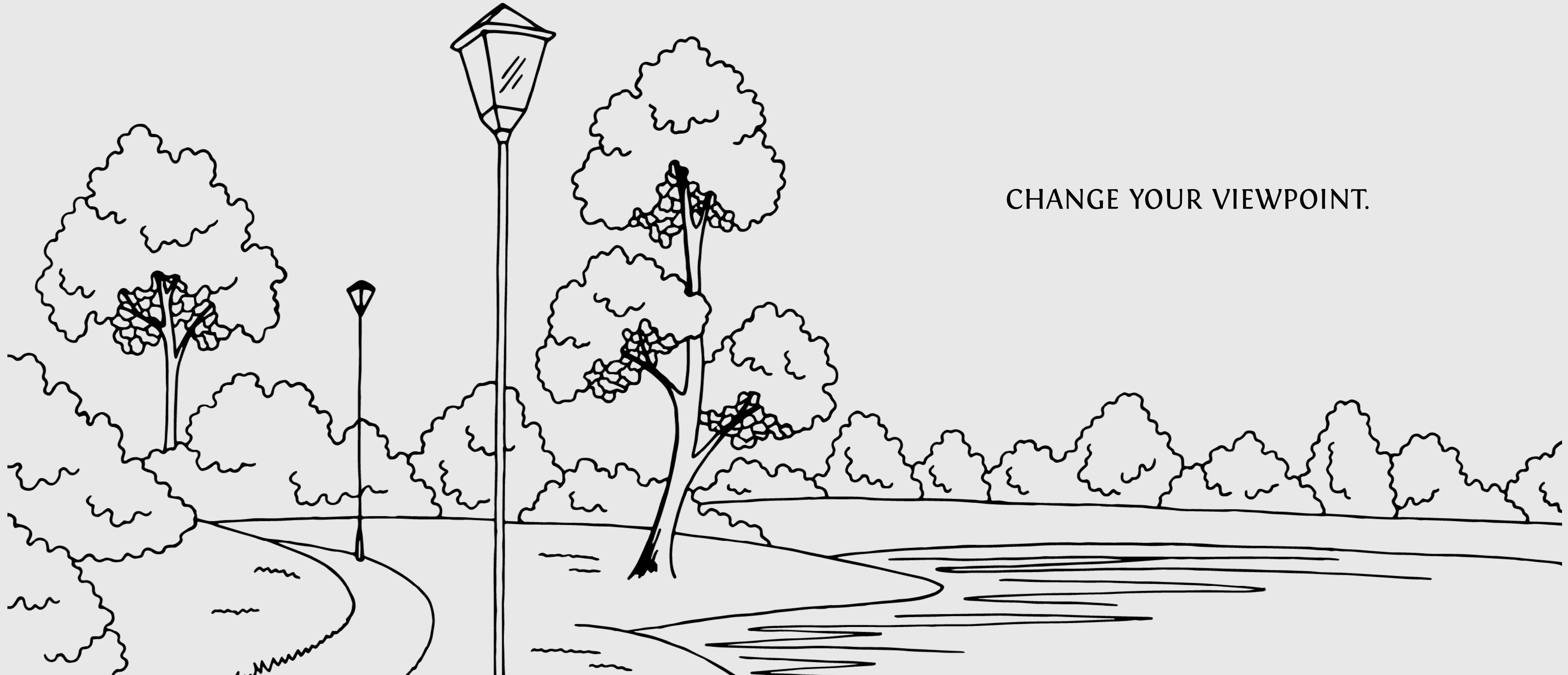
Straight out of the Architecture Design books you adore. Very contemporary, modern & ultra luxurious. And the best part? You are so close to the city and hospitals, schools, malls, yet so far away, with your own space in the sky. You may not have the luxury of time, but now you have the luxury to switch off from the city & the work stress.

When you work hard, can success be far behind? Presenting a dream residence for successful professionals. The tallest residence for sky high luxury. The largest, greenest landscaped balconies.





Relive your childhood by making your kids colour this landscape sketch with bright hues and tints.
Colour it and tag it to our social media to win exciting goodies.



CHANGE YOUR VIEWPOINT.



These images are artistic renders. Actuals may vary



These images are artistic renders. Actuals may vary



These images are artistic renders. Actuals may vary



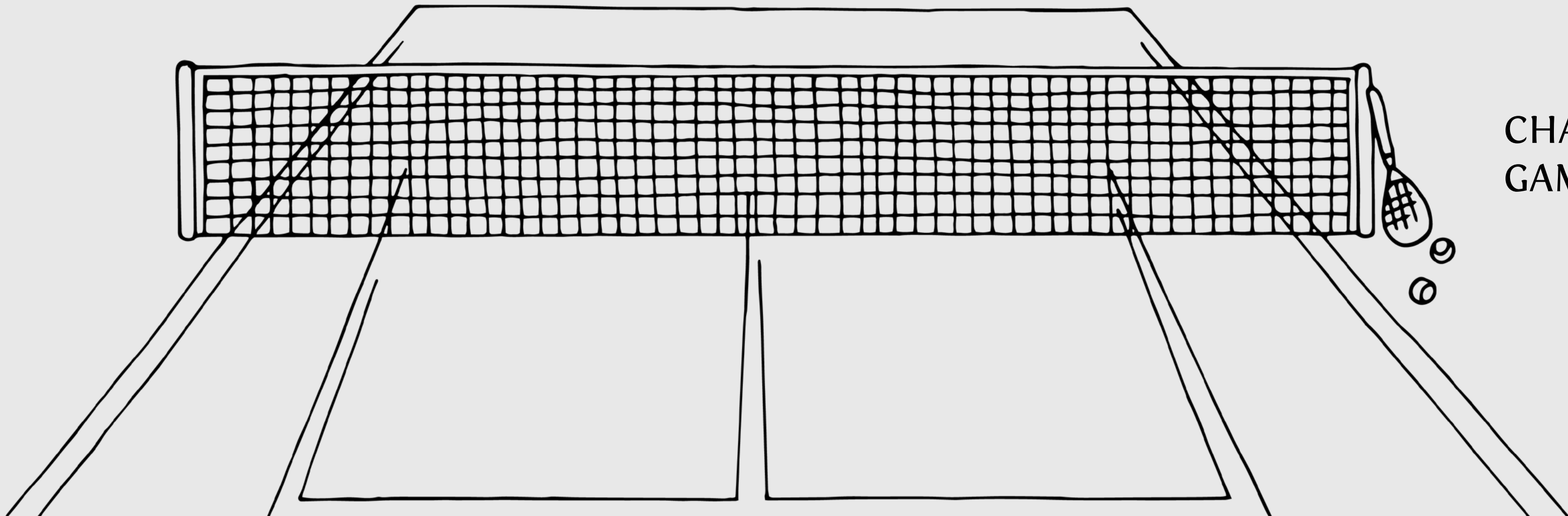
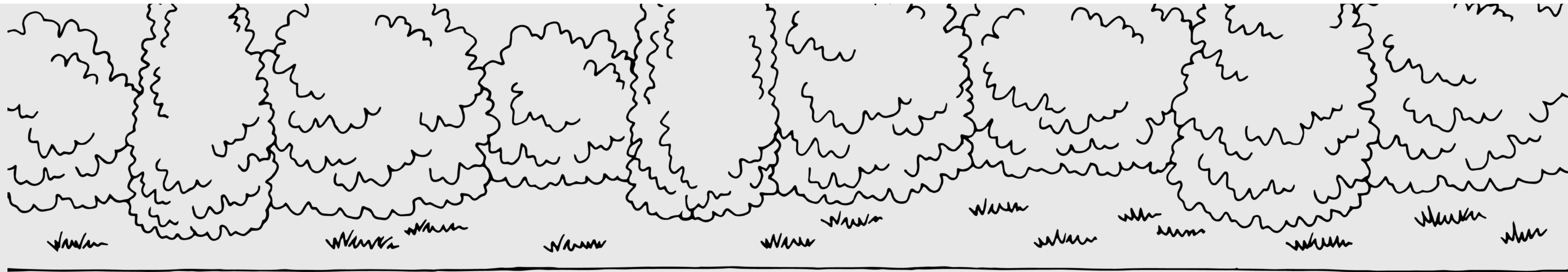
These images are artistic renders. Actuals may vary

Look around you. Look beyond - into the horizon. See the city and nature in all its glory from your sky villa vantage point. Here, a bird's eye view assumes a different meaning and you can spend hours just basking in the open air balcony and lounging in nature's luxury.

There's nothing more soulful than spending time with your own self, and escaping the routine of a structured life. Sometimes it's best to do nothing, except maybe admire the night sky, moon, stars. Or welcome a new day by unrolling your yoga mat to a picturesque twilight dawn. Your spiritual zone of 'oneness'.



Relive your childhood by making your kids colour this landscape sketch with bright hues and tints.
Colour it and tag it to our social media to win exciting goodies.



CHANGE YOUR
GAMEPLAN.



With a Relaxation Deck for the family to chill out, yoga & meditation zones, play areas for kids, ample open spaces, and multi-sports facilities to suit your multi-dimensional personality. Golfing on your mind? Clubbing on your lady love's mind?



Mana Verdant has it all, including the swankiest clubhouse this side of town. Just what you would expect, if you were residing in the tallest, greenest residences, right?



The barometer of a life well lived is to provide your family the best. What is critical is the timing. Today this opportunity of a lifetime is right before you. Tomorrow who knows? Strike the right chords and get ready to go up in life, and stay up, in style. No compromises, no regrets, the time to act is today. The future is sky high, with a green expanse spread across 4.9 acres.

Let the green foliage, green landscape, act as the perfect antidote to the stress of everyday professional life. Discover organic architecture that blends with rainwater canals, secret nature trails and dream gardens.



Relive your childhood by making your kids colour this landscape sketch with bright hues and tints.
Colour it and tag it to our social media to win exciting goodies.



CHANGE YOUR PRIORITIES.

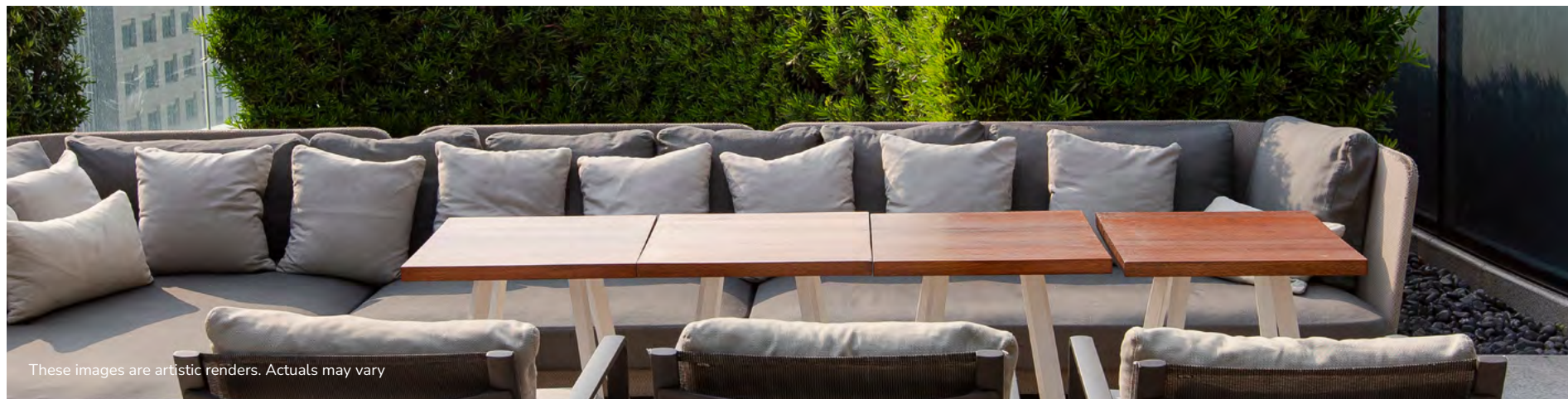


Representational Image

Where work days and weekends both have a new high. For once a premium lifestyle doesn't come at the 'cost' of the family, rather it comes as a 'bouquet' for the entire family, with each one having the freedom to pursue what sparks their interest. Mana Verdant is as family centric as you want it to be. And as individual centric as you wish to be.



These images are artistic renders. Actuals may vary



These images are artistic renders. Actuals may vary

Enjoying your work is a rare privilege. Enjoying your family life is a bigger privilege. Now get the best of both worlds, with every nook & corner, created to heighten your senses, quieten the city noise and transport you into your own world. The rare luxury of being with yourself is beautifully balanced with the family bonhomie spirit you champion.

The feeling of complete mental peace and joyous fulfilment of providing for everyone in the family, from elderly parents to your young shining stars.

MASTER PLAN

- 01 ENTRY / EXIT
- 02 ENTRANCE WAITING PLAZA
- 03 SEATING
- 04 YOGA/MEDITATION COURT
- 05 PEOPLE'S PLAZA
- 06 STAGE
- 07 DECK AREAS WITH SEATING
- 08 ELDER'S SEATING AREA
- 09 MINI GOLF
- 10 WATER BODY
- 11 SAND PIT
- 12 CHILDREN'S PLAY AREA
- 13 TOT-LOT
- 14 SKATING RINK
- 15 DRIBBLE COURT
- 16 VOLLEYBALL COURT
- 17 DECK FOR SEATING
- 18 TRANSITION AREA FOR COURT
- 19 LAWN
- 20 CRICKET NETS
- 21 PET ZONE
- 22 SMOKIN/SEATING ZONE
- 23 TENNIS COURT
- 24 BUTTERFLY GARDEN
- 25 SEATING AREA FOR COURT
- 26 DECK AREA
- 27 OUTDOOR WORK SPACE
- 28 HEALING GARDEN
- 29 ACUPUNCTURE PATHWAYS
- 30 READING CORNER
- 31 YOGA
- 32 STAGE/DECK
- 33 ENTRANCE WATER FEATURE
- 34 ENTRANCE PLANTATION
- 35 SEATING/WAITING



These images are artistic renders. Actuals may vary



Scan for Virtual Tour



Scan for virtual experience



2 BEDROOM HALL KITCHEN
ISOMETRIC FLOOR PLAN

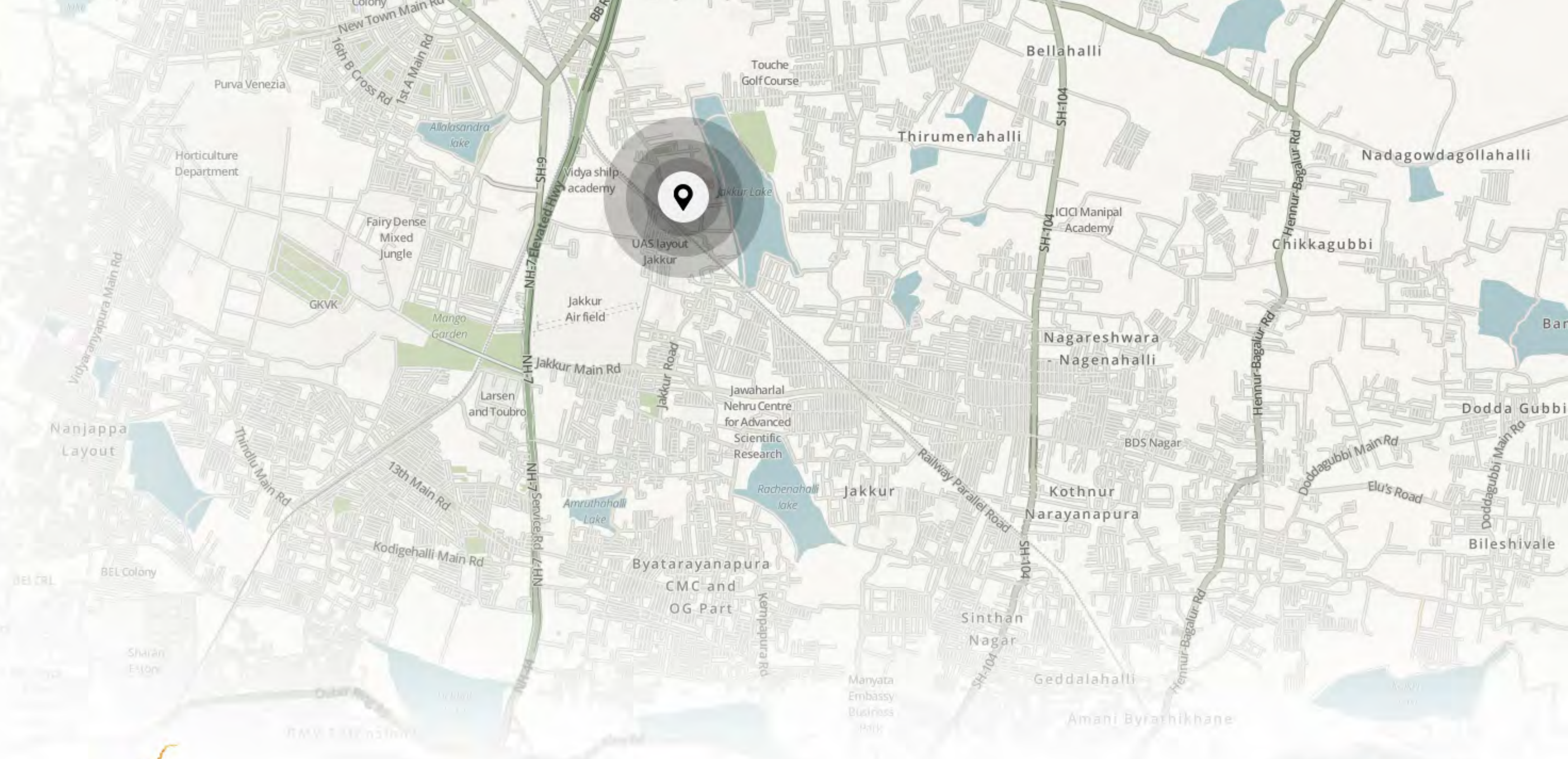


Scan for virtual experience



3 BEDROOM HALL KITCHEN
ISOMETRIC FLOOR PLAN

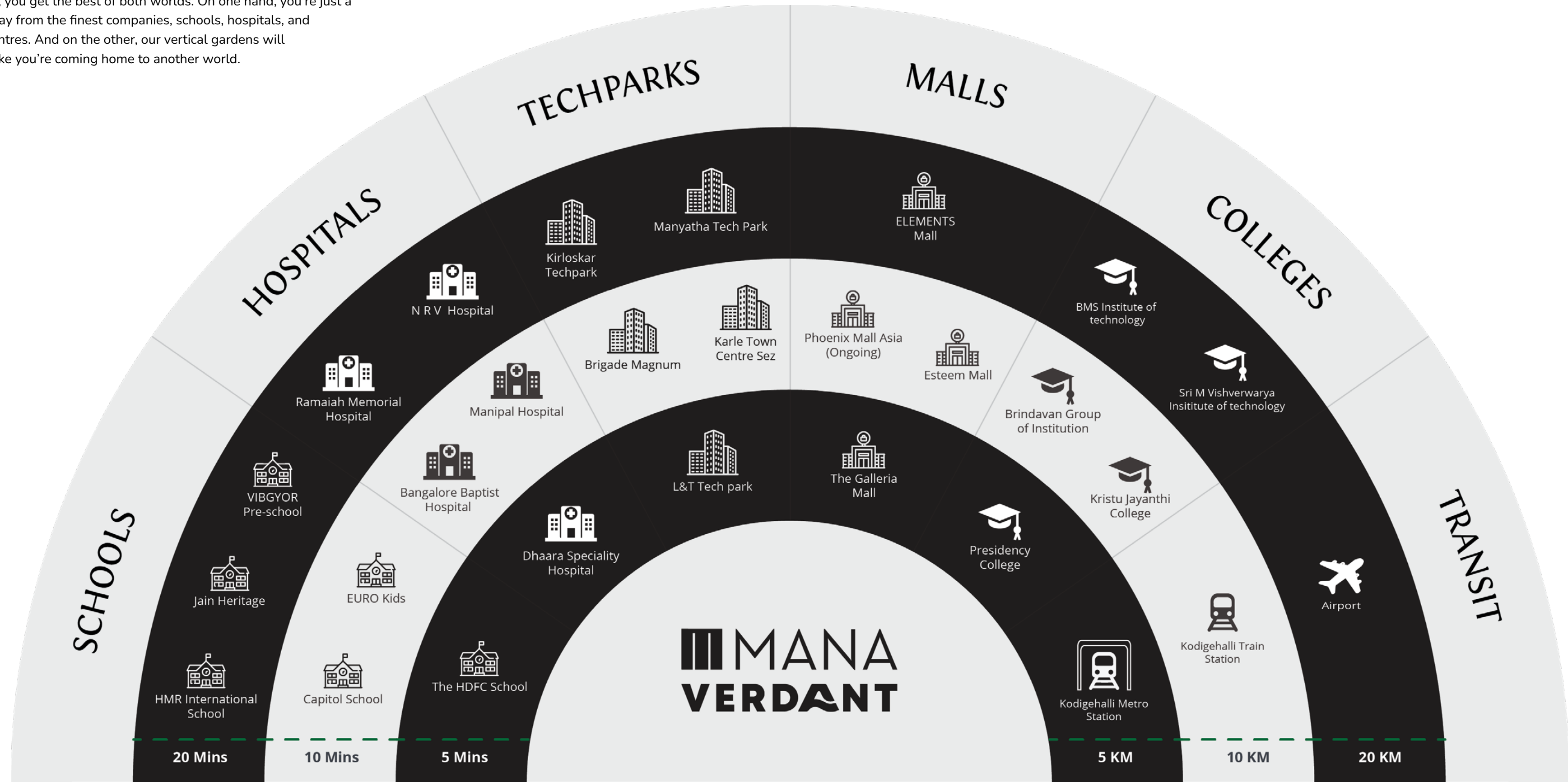
LOCATION



THE NEIGHBOURHOOD

At Mana Verdant, you get the best of both worlds. On one hand, you're just a stone's throw away from the finest companies, schools, hospitals, and entertainment centres. And on the other, our vertical gardens will ensure you feel like you're coming home to another world.

Scan for 360° View



CIVIL

WALLS AND PLASTERING

- RCC Framed Structure with Solid Blocks for walls masonry.
- Internal Walls with smooth finish & external walls of sponge finish plastering.
- Wall External 6" & internal wall 4" thick.

ARCHITECTURE

DOORS & WINDOWS

- Teak Wood door frame with Molded Panel Main door with melamine polishing.
- IS Standard SS finish fitting (Hinges & Latches) for main door with lock.
- Acasia wood door frame & Painted finish Flush Door fitted with Hardware to all rooms & Toilets.
- The Height of Main Door and other Doors would be 8 Feet and Toilet doors would be of 7 Feet Height
- UPVC windows with grills and mosquito mesh.
- UPVC French door for Balcony with Mosquito mesh. (No Grills)
- UPVC ventilators (provision for exhaust fan).

PAINTS

- Emulsion for internal walls, Enamel paint for doors and grills, natural polish for main doors As per architectural drawings
- External emulsion paints (weather coat) with texture finish.

FLOORING

- Laminated wooden flooring for Master Bedroom.
- Standard make IS Standard 800mm x 800mm tiles in all Bed rooms, Living room, Dining, Kitchen and other areas.
- Standard make antiskid tiles for Toilet Flooring (600mm x 600mm) & Balcony flooring (200mm x 1200mm).
- Standard make wall tiles (600mm x 600mm) up to 7ft high in all toilets.
- Standard make dado tiles up tp 3.5ft in utility walls

INTERNAL AND EXTERNAL FINISHES

- Emulsion paint for interiors.
- Polished/Enamel painted doors and grills.
- Weather coat painting for exteriors.

KITCHEN

- Granite Counter platform with SS sink and 2ft high wall tile dado.
- Provision for water purifier & chimney exhaust.
- Washing arrangement in utility area with water & drain line (One tap will be provided).

PLUMBING, ELECTRICAL & SERVICES

TOILETS

- Grohe/American standard/Roca/Vitra/equivalent make of CP Fittings and accessories of good quality general range.
- Grohe/American standard/Roca/Vitra/equivalent make sanitary fittings of any white shades in colour..
- Concealed CPVC Plumbing lines for hot water lines in all toilets.
- Granite Counter in Master Bed room toilet for Wash basin.

ELECTRICAL

- Modular Switches - Schneider- Livia, Anchor-Roma + Honeywell - Evo or Equivalent make.
- Concealed fire-resistant ISI Standard quality copper wiring. (Anchor, Havells, Polycab or equivalent make).
- A/c point in Master Bedroom and dummy provision for other bedrooms.
- T.V & Telephone Point in Living & Mater Bed Room.

ELEVATORS

- Schindler/Otis/ Kone or equivalent Branded automatic lifts as per Architectural drawings.
- Elevator with passenger capacity of 10-13

GENERATOR

- Generator back up for Common Area (lifts & others), lighting back up for each flat.

CAR PARKING

- One covered Car parking will be provided for every apartment.

GRID POWER AND BACKUP POWER

- Grid power
- DG power backup for units - 1 KVA only for lighting.
- DG power backup for common areas.

SERVICES

- Water Treatment Plant.
- Sewage Treatment Plant.
- Organic Waste Converter.

SAFETY & SECURITY

- Provision for Video Door Phones
- Common area surveillance.
- Fire rated doors at fire escape staircases.

SPECIFICATIONS



CURATED ONLY FOR YOU

MANA, the leader in East Bengaluru, has created a niche among IT & corporate professionals, with highly appreciated, landscaped, planned projects, spread across Sarjapur. Connoisseurs of the natural life, and discerning buyers know that Mana represents openness. Open spaces. Open organic architecture. Open welcoming greenery. With breakthrough projects like Mana Foresta, we have redefined luxury. Now for the first time, Mana is coming to Jakkur, with the tallest building which will change the cityscape and dazzle the skyline.



Corporate Office

Mana Projects Pvt. Ltd.
No.20/7, 3rd floor, Swamy Legato,
Kadubeesanahalli, ORR, Bengaluru - 560103

Site Address

Sy No: 33/4, 36/4, 37/5, 37/6, 10/34, 10/4,
at Jakkur Village, Yelhanka Hobli,
Bengaluru - 560064

RERA: rera.karnataka.gov.in

PRM/KA/RERA/1251/309/PR/260523/005947

Call: 7676 333 000 | Email: enquiry@manaprojects.com | Website: www.manaprojects.com

Project funded &
financed by



DISCLAIMER: The Company does not guarantee or represent the information contained in this document, which is to be used for general information only. The company does not guarantee or represent that the information contained within this document is correct. Any interested party should verify all the information including designs, plans, specifications, facilities, features, payment schedules terms of sales, etc. independently with the company prior to concluding any decision for buying in any of the projects.

The user of the brochure confirms that he/she has not relied on this information alone when making any booking/ purchase in any project of the company. The information, visuals, renders and creative depictions contained herein are artistic impressions, Indicative in nature and are for general information purposes only. The actual design/colour/finish/construction/landscape could undergo changes based on changes in design, layouts, materials, site conditions, etc. Any furniture paintings, or any items of personalised nature not specifically mentioned in the contract and shown in the images are only for the purpose of illustration and does not form part of the offering. Further, the renders/visuals of the area beyond the project site are artistic in nature and while every reasonable care has been taken in providing the information, under no circumstances the company or its employees, managers or representatives shall be held liable for any loss or damage, special or consequential or otherwise, arising from the use of or reliance on information provided in the brochure without verifying the same independently with the company.

📍 JAKKUR, ON AIRPORT ROAD

**MANA
VERDANT**

DON'T JUST CHANGE YOUR HOME...



PREMIUM SKY VILLAS & APARTMENTS

MASTER PLAN



Scan for Virtual Tour

NORTH FACING



2 BHK

Super Built Up Area
1236 SQ. FT.

Built Up Area
950 SQ. FT.

Wall Area
73 SQ. FT.

Balcony & Utility
102 SQ. FT.

Carpet Area
776 SQ. FT.



Scan for Virtual Tour

EAST FACING



3 BHK

Super Built Up Area
1851 SQ. FT.

Built Up Area
1424 SQ. FT.

Wall Area
97 SQ. FT.

Balcony & Utility
188 SQ. FT.

Carpet Area
1139 SQ. FT.



Scan for Virtual Tour

EAST FACING



3 BHK

Super Built Up Area
1529 SQ. FT.

Built Up Area
1176 SQ. FT.

Wall Area
87 SQ. FT.

Balcony & Utility
166 SQ. FT.

Carpet Area
923 SQ. FT.



Scan for Virtual Tour

180° LAKE VIEW

4.9 ACRES

381 UNITS

G+18 FLOORS

30+ AMENITIES

SPECIFICATIONS

WALLS & PLASTERING

- RCC Framed Structure with Solid Blocks for walls masonry.
- Internal Walls with smooth finish & external walls of sponge finish plastering.
- Wall External 6" & internal wall 4" thick.

DOORS & WINDOWS

- Teak Wood door frame with Molded Panel Main door with melamine polishing.
- IS Standard SS finish fitting (Hinges & Latches) for main door with lock.
- Acasia wood door frame & Painted finish Flush Door fitted with Hardware to all rooms & Toilets.
- The Height of Main Door and other Doors would be 8 Feet and Toilet doors would be of 7 Feet Height.
- UPVC windows with grills and mosquito mesh.
- UPVC French door for Balcony with Mosquito mesh. (No Grills)
- UPVC ventilators (provision for exhaust fan).

ELECTRICAL

- Modular Switches - Schneider- Livia, Anchor-Roma + Honeywell - Evo or Equivalent make.
- Concealed fire-resistant ISI Standard quality copper wiring. (Anchor, Havells, Polycab or equivalent make).
- A/c point in Master Bedroom and dummy provision for other bedrooms.
- T.V & Telephone Point in Living & Master Bedroom.

FLOORING

- Laminated wooden flooring for Master Bedroom.
- Standard make IS Standard 800mm x 800mm tiles in all Bedrooms, Living room, Dining, Kitchen and other areas.
- Standard make antiskid tiles for Toilet Flooring (600mm x 600mm) & Balcony flooring (200mm x 1200mm).
- Standard make wall tiles (600mm x 600mm) up to 7ft high in all toilets.
- Standard make dado tiles up to 3.5ft in utility walls.

CAR PARKING

- One covered Car Parking will be provided for every apartment.

KITCHEN

- Granite Counter platform with SS sink and 2ft high wall tile dado.
- Provision for water purifier & chimney exhaust.
- Washing arrangement in utility area with water & drain line (One tap will be provided).

TOILETS

- Grohe/American standard/Roca/Vitra/equivalent make of CP Fittings and accessories of good quality general range.
- Grohe/American standard/Roca/Vitra/equivalent make sanitary fittings of any white shades in colour.
- Concealed CPVC Plumbing lines for hot water lines in all toilets.
- Granite Counter in Master Bedroom toilet for Wash basin.

PAINTS

- Emulsion for internal walls, Enamel paint for doors and grills, natural polish for main doors As per architectural drawings.
- External emulsion paints (weather coat) with texture finish.

INTERNAL & EXTERNAL FINISHES

- Emulsion paint for interiors.
- Polished/Enamel painted doors and grills.
- Weather coat painting for exteriors.

LIFTS

- Schindler/Otis/ Kone or equivalent Branded automatic lifts as per Architectural drawings.
- Elevator with passenger capacity of 10-13.

POWER BACKUP

- Generator back up for Common Area (lifts & others), lighting back up for each flat.

CHANGE YOUR PERSPECTIVE.



MANA

The leader in East Bengaluru, has created a niche among IT & corporate professionals, with highly appreciated, landscaped, planned projects, spread across Sarjapur. Connoisseurs of the natural life, and discerning buyers know that Mana represents openness. Open spaces. Open organic architecture. Open welcoming greenery. With breakthrough projects like Mana Foresta, we have redefined luxury. Now for the first time, Mana is coming to Jakkur, with the tallest building which will change the cityscape and dazzle the skyline.



Corporate Office
Mana Projects Pvt. Ltd. No.20/7, 3rd floor, Swamy Legato, Kadubeesanahalli, Outer Ring Road, Bengaluru, Karnataka 560103

Site Address
Sy No: 33/4, 36/4, 37/5, 37/6, 10/34, 10/4 at Jakkur Village, Yelhanka Hobli, Bengaluru North Taluk

Call: 7676 333 000 | Email: enquiry@manaprojects.com | Website: www.manaprojects.com

RERA: rera.karnataka.gov.in
PRM/KA/RERA/1251/309/PR/260523/005947

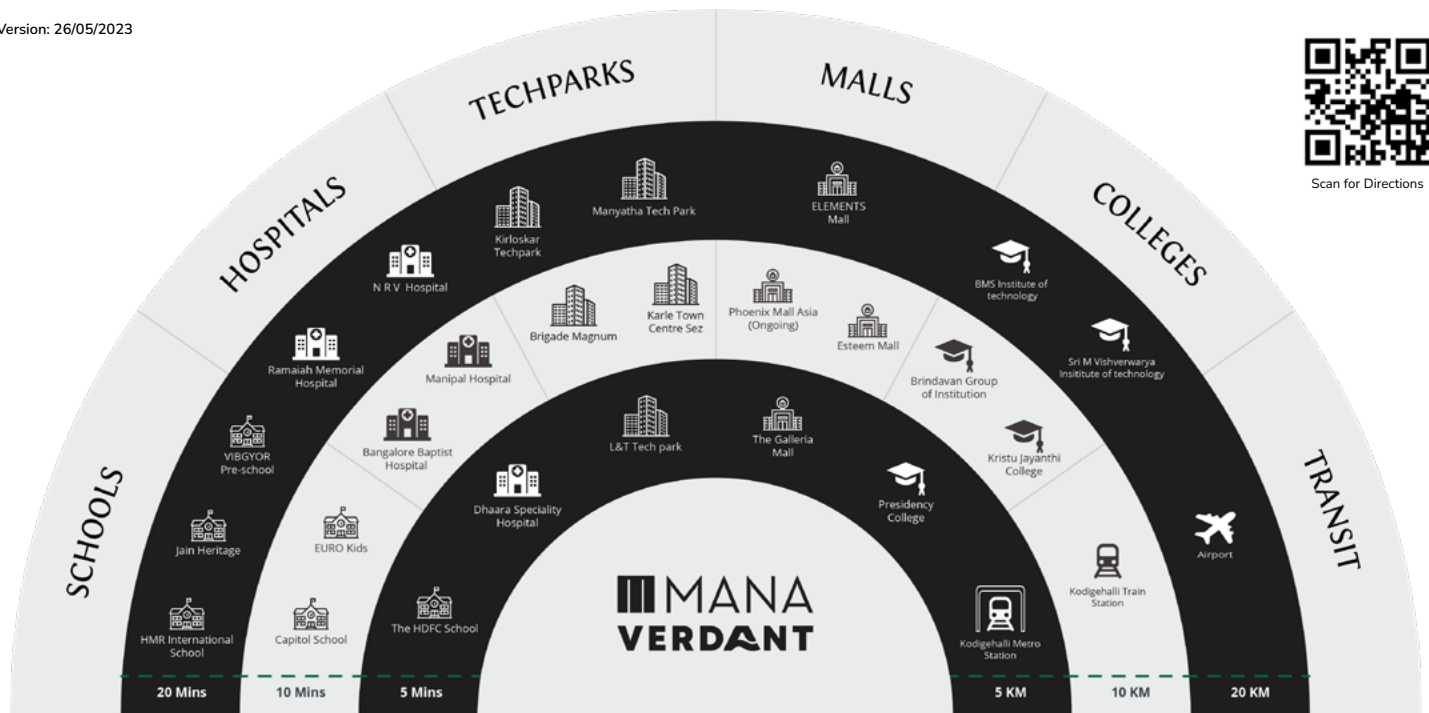
Project funded & financed by



DISCLAIMER: The Company does not guarantee or represent the information contained in this document, which is to be used for general information only. The company does not guarantee or represent that the information contained within this document is correct. Any interested party should verify all the information including designs, plans, specifications, facilities, features, payment schedules terms of sales, etc. independently with the company prior to concluding any decision for buying in any of the projects.

The user of the brochure confirms that he/she has not relied on this information alone when making any booking/ purchase in any project of the company. The information, visuals, renders and creative depictions contained herein are artistic impressions, Indicative in nature and are for general information purposes only. The actual design/colour/finish/construction/landscape could undergo changes based on changes in design, layouts, materials, site conditions, etc. Any furniture paintings, or any items of personalised nature not specifically mentioned in the contract and shown in the images are only for the purpose of illustration and does not form part of the offering. Further, the renders/visuals of the area beyond the project site are artistic in nature and while every reasonable care has been taken in providing the information, under no circumstances the company or its employees, managers or representatives shall be held liable for any loss or damage, special or consequential or otherwise, arising from the use of or reliance on information provided in the brochure without verifying the same independently with the company.

Version: 26/05/2023



Scan for Directions