



Shraddhanand Road, Opposite Akruti Tower, Vile Parle East, Mumbai 400 057.

Architect : ANJ Engineering Consultants LLP

Design Architect : KPA (Kaushik Patel)

RCC Consultants : P.K. Sura & Associates



P51800006526



Approved by all leading Banks



ISO 9001:2008

ISO 14001: 2004

OHSAS 18001:2007

GRPM INFRA PROJECTS LLP

701/702, Balaji Business Centre, Ram Milan Premises Cooperative Society Ltd., Subhash Road, Opposite State Bank of India, Vile Parle East, Mumbai - 400 057. • Tel.:+91 (22) 26846688, 26846565.

Email: info@zeeinfra.com, zeeinfra@gmail.com, zeeinfra@hotmail.com • Website: www.zeeinfra.com

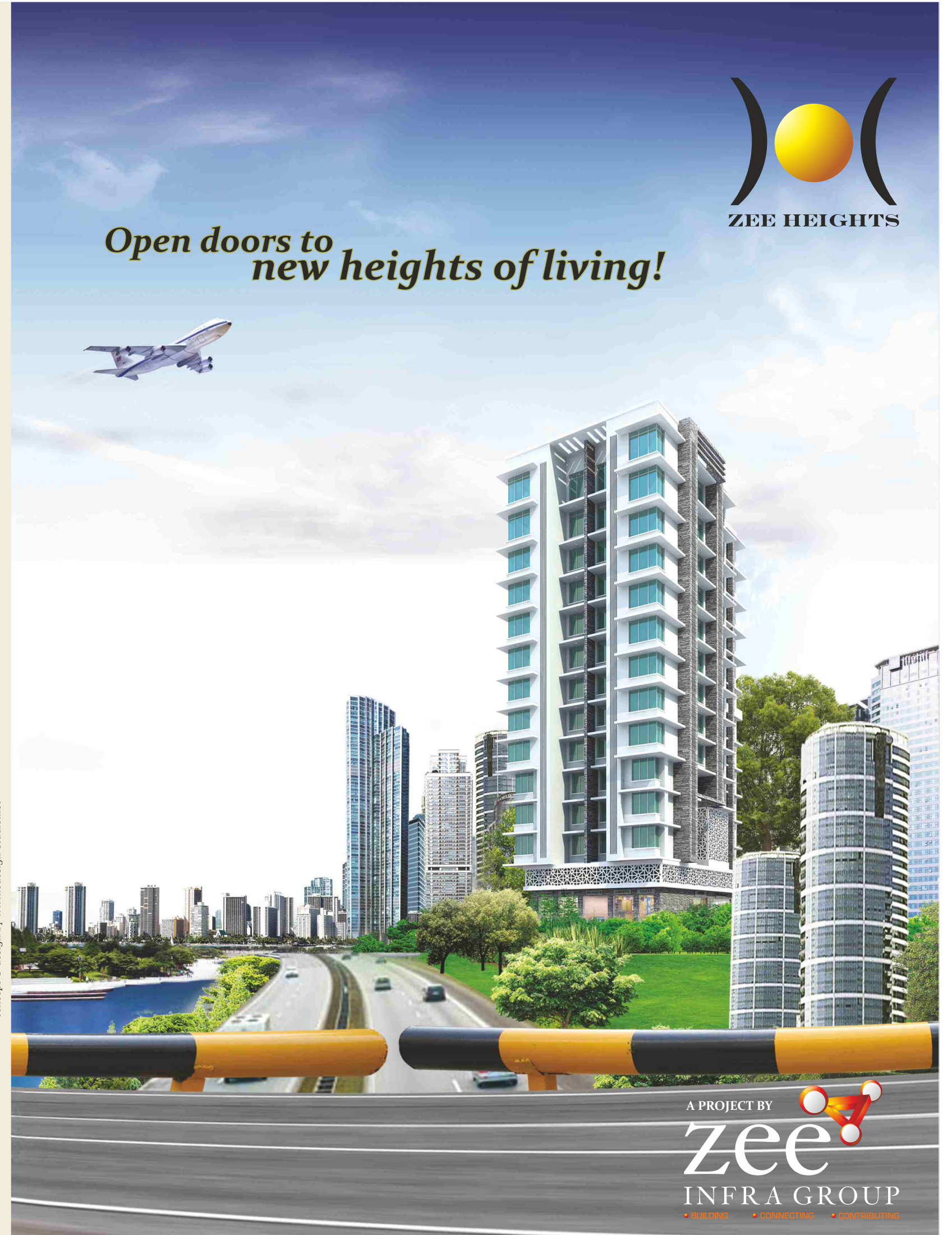
The information contained in the brochure is indicative of the kind of development that is proposed. It is prepared and issued in good faith and is for guidance only. It does not constitute part of any offer or contract. Subject to the approval of the authorities or in the interest of the continuing improvement, the developers reserve the right to alter the layout, plans specifications or features without prior notice or obligation.



Open doors to new heights of living!



concept & design by www.edesign-studio.net



heights of togetherness

ZEE Infra Group is a dynamic company which focuses on ground up redevelopment and construction projects and opportunities. In the world of today, we have built an unshakable reputation for quality, efficiency, trust, meticulous planning, top quality amenities, superlative designs, green environment, timely project completion, guaranteed possession and handing over the projects with guaranteed satisfaction. One such project is Zee Heights.

Has it ever occurred to you that everybody views the sky differently? It's true. It reflects the quality of life that you live.

Now take for instance, you own spacious 1 / 2 / 3 BHK in Zee Heights a project by Zee Infra Group, based in the prime suburb location of Vile Parle (E), what would the sky look like?

If you think blue is the answer, then you're too modest or may be too honest. Blue after all, is the colour of the sky that is symbol of calmness, spirituality, infinity and tranquility. All of which you will experience at Zee Heights.

You could be those aspiring minds who are on the brink of starting a family of your own, or the well settled ones looking for an upgrade in your lifestyle or just someone who wishes to make an investment that will benefit you in the future. Read on to know more about the quality of life that awaits you within these welcoming walls and around it.

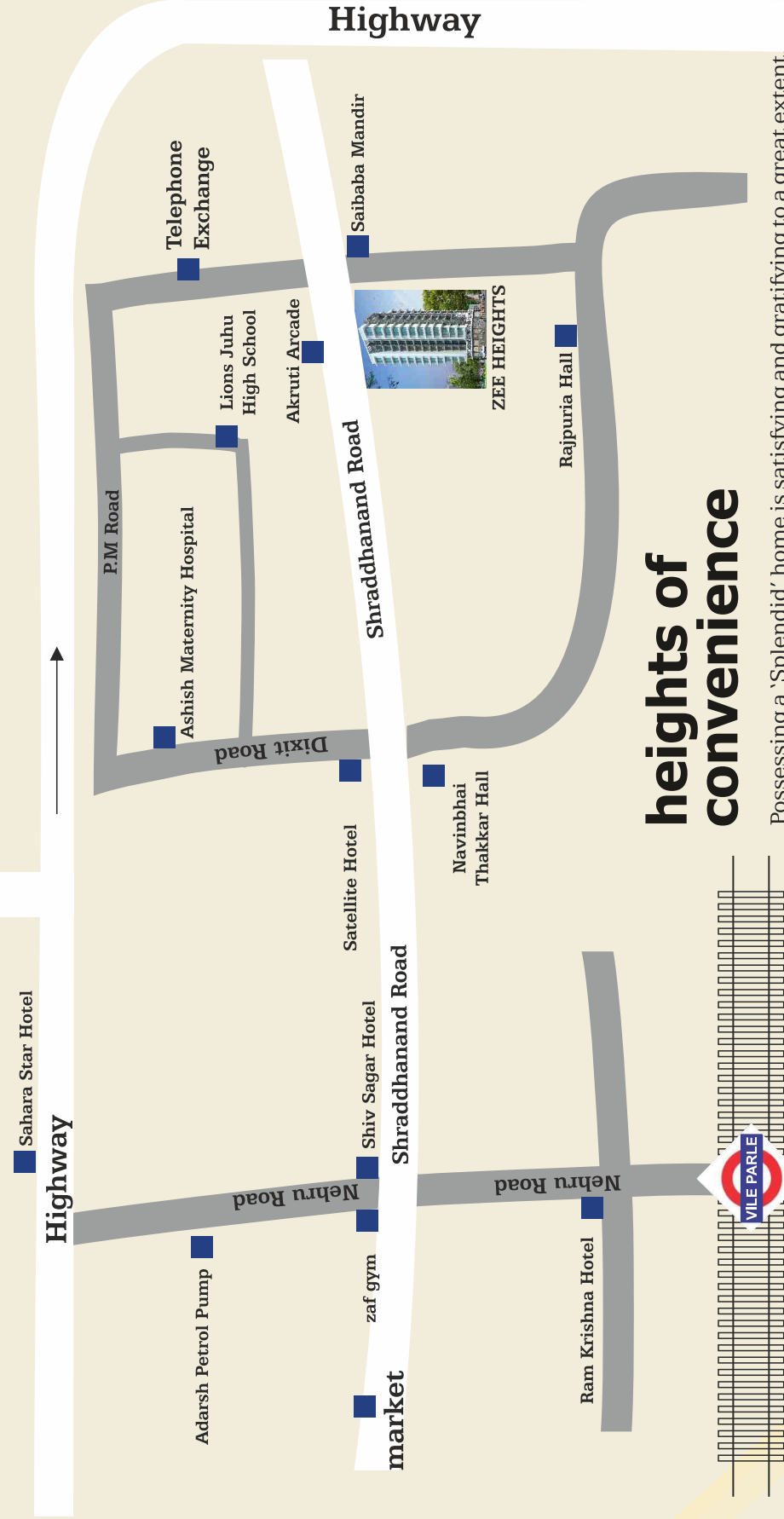
project highlights:

- 12 Storey Stand Alone Building
- Luxurious 1/2/3 BHK residences
- State of the art security systems
- Most convenient and suitable location
- Surrounded by Greenery
- Ample Parking Space
- Gymnasium, Kids Play Area, Walking Track, Sitout Area, Yoga & Meditation Area
- The building orientation and interior layout as per Vastu by Mr. Rashesh Shah (Vastu Consultant)





Airport



heights of convenience

Possessing a 'Splendid' home is satisfying and gratifying to a great extent, what if there is more to it. Located in one of the prime locations of Vile Parle, you are just a bus ride away from the railway station or even a couple of minutes away from cruising on to the Western Express Highway, not to forget about the Mumbai International Airport. With the most convenient facilities like schools, shopping malls and theater at a walking distance, Zee Heights proves to be an ideal location for you and your family to enjoy an amazing lifestyle.

Zee heights is a 5 minutes walking / drive from:



School/
College



Market



Highway



Railway
Station



Airport

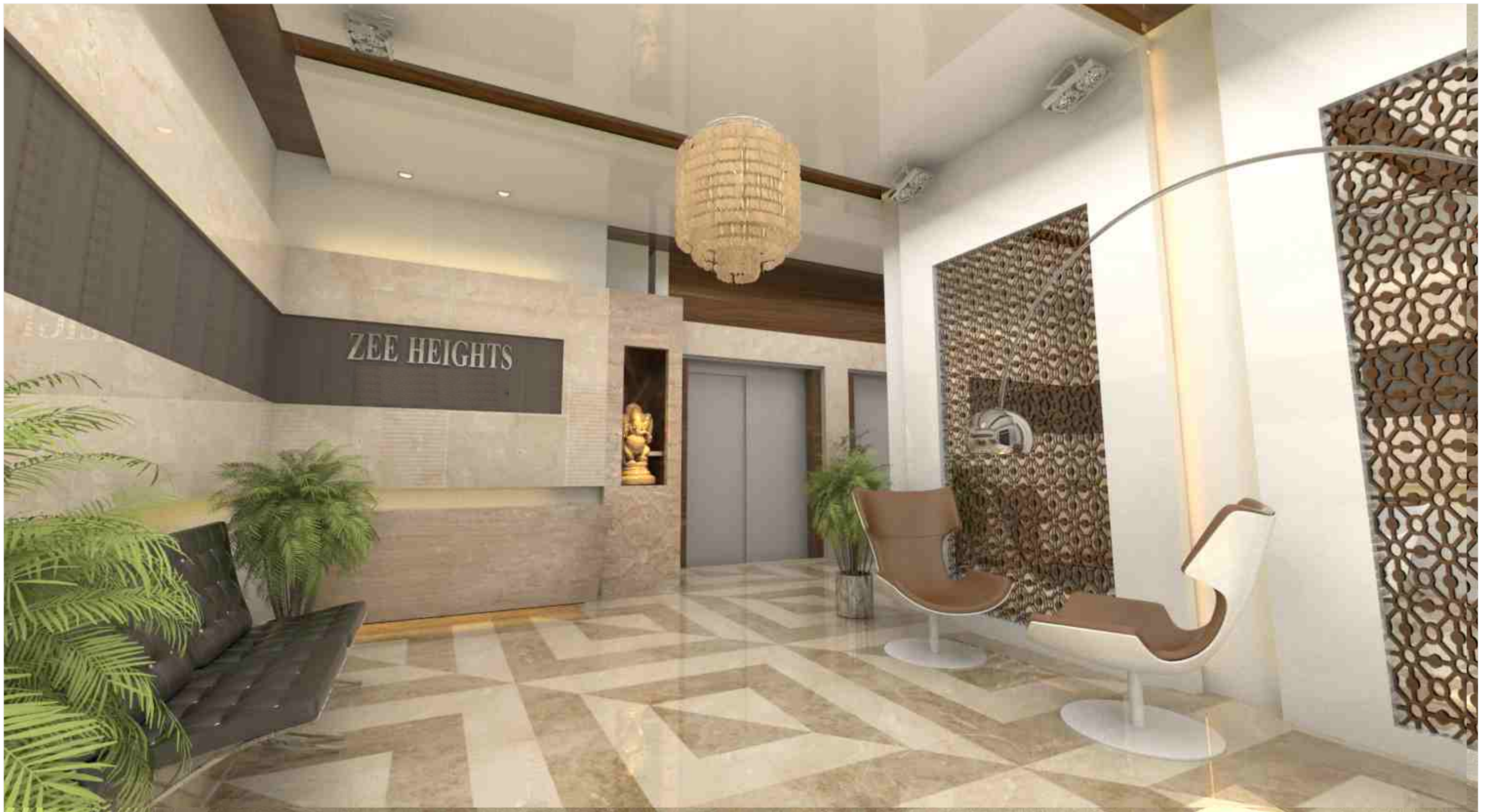


Temple



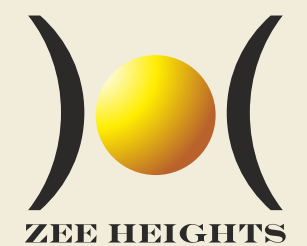
Hotels &
Restaurants

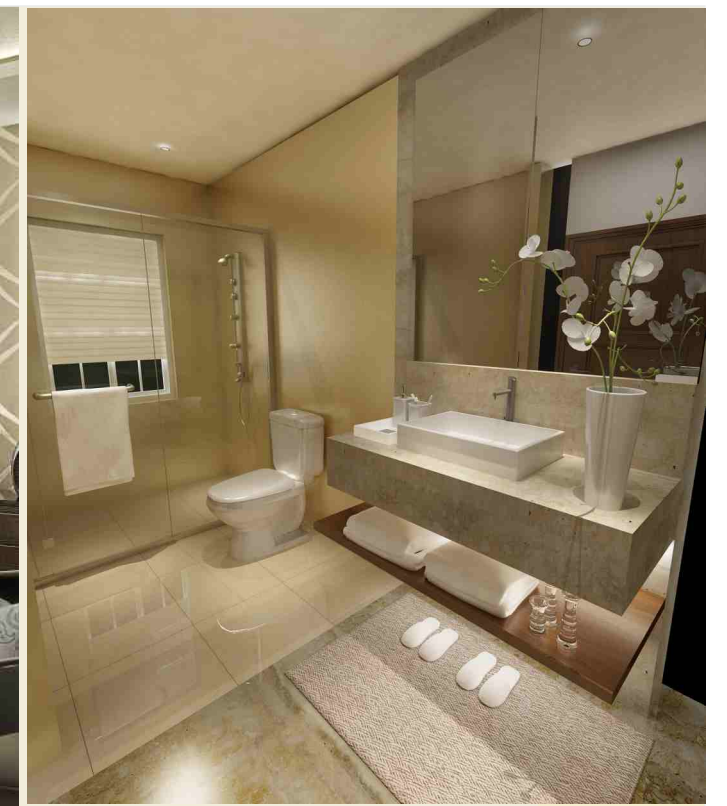
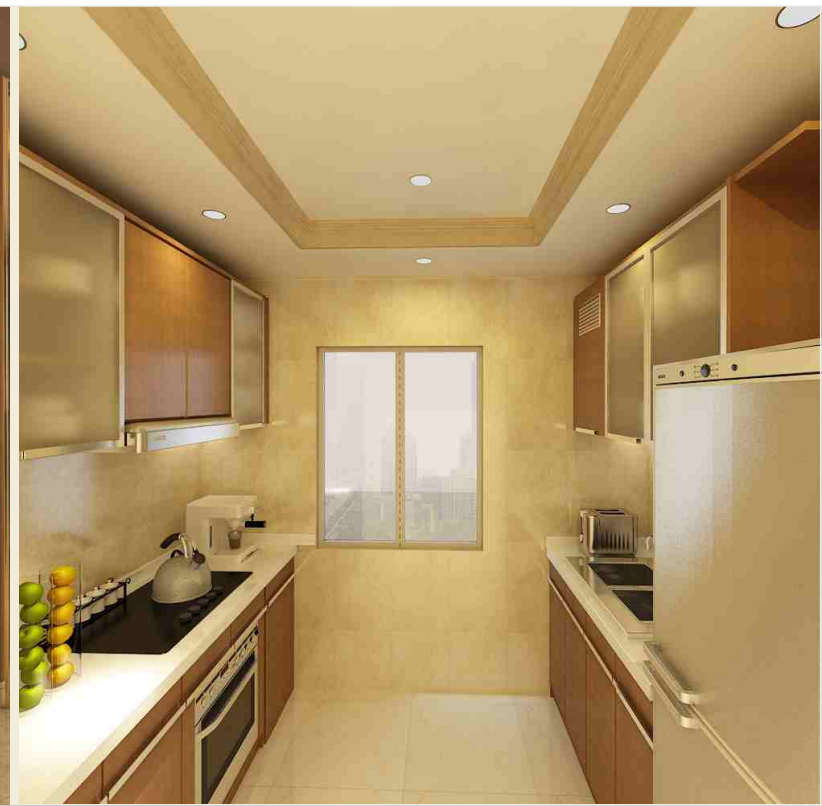
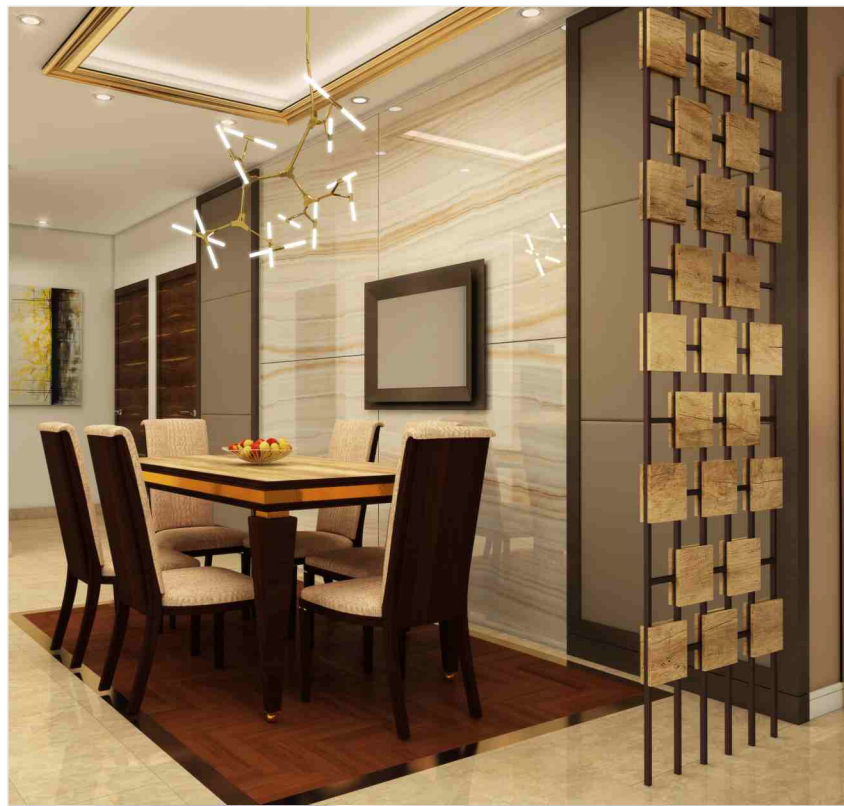




heights of spirituality

A lobby is supposed to be welcoming! And that's exactly what you will get every time you step into the building. With the presence of a prayer area, a divine beginning for an auspicious day will be in the making. Simply put, feel heavenly everytime to head home.





heights of luxury

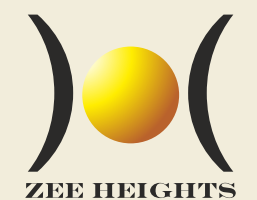
That's what an ideal living room should be like. After all, it represents all that you are. With a carefully designed and well spread out sofa and dining area, your living room could be ideal for family get-togethers, parties or even the most apt place to enjoy your Sunday morning breakfast.

heights of comfort

The bedroom tells of a story every night which you aim to live every morning. That's right! It is home to many of your dreams. Designer flooring, spacious bed space and many more such features add to the level of comfort that you wish to experience in your own home.

heights of brilliance

Gone are the days where a good kitchen meant a happy missus. The times have changed. You could be the one cooking up something special to celebrate your anniversary or maybe whip up something delicious for your kids over the weekend. Now imagine experiencing the joy of doing all this in a state-of-the-art designer kitchen.

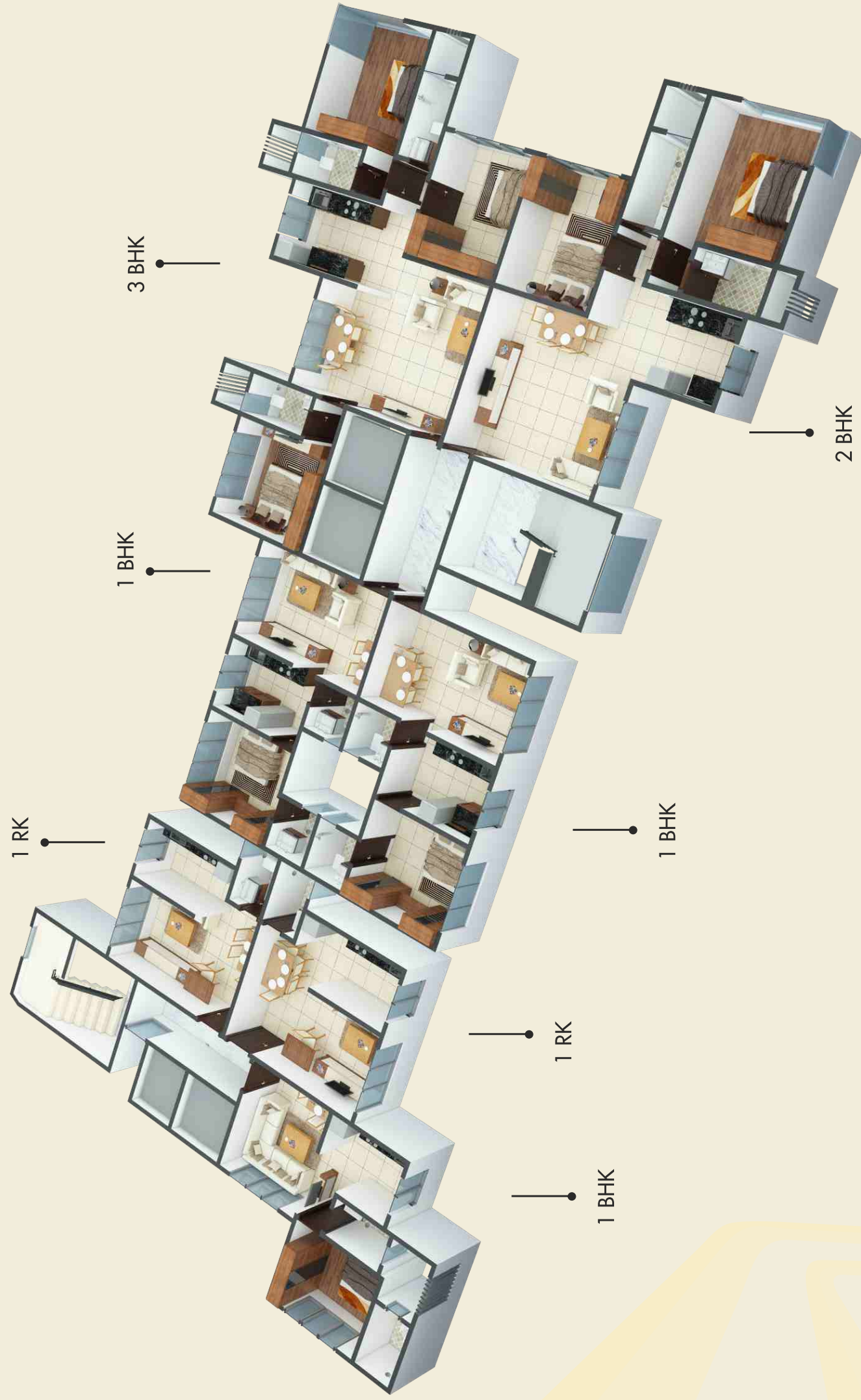
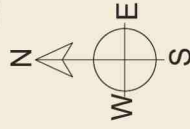


ZEE HEIGHTS

TYPICAL FLOOR PLAN



SCALE = 1 : 100



TERRACE PLAN

heights of newness, literally.

We turned a simple terrace into the best hangout spot. Why head down to indulge in a time of leisure when you can head up? Your home at Zee Heights is more than just a rooftop. With a well-designed terrace consisting of a plethora of amenities, you can feel on top of the world. So go ahead and take a seat in the 'sit out' area and enjoy a bird's eye view of the world around; indulge in early morning yoga sessions or simply go for a brisk healthy walk on our specially designed 'walking track' and that too, on your very own terrace.



proposed specifications & amenities

External Amenities:

- Design of structure suitable for Earthquake Resistance
- Rain Water Harvesting System
- R.C.C frames structure specially designed for hazard like earthquake and loads
- Modern Design in Elevation Treatment
- Chequered tiles for stilt portion and surrounding area
- Society office with furniture
- Stilt Car parking

External Finish

- Entire building painted with weather proof external grade texture paint

Internal Amenities:

Flooring:

- Vitrified Tiles in all rooms

Kitchen:

- All internal walls with 7' full tiles.
- Granite Cooking Platform
- Tiling on side wall
- Stainless Steel sink of reputed make
- Provision of Gas Connection
- Water Purifier of renowned brand

Wall and Ceiling:

- Gypsum Punning on walls
- Internal walls with plaster, lustre or acrylic paint

Water Proofing:

- Cement based water proofing to terrace with 3 Years Guarantee

Entrance Lobby:

- Elegantly finished entrance lobby with temple

Elevator:

- Modern High - speed elevators of reputed make

Windows:

- Anodised / Powder coated aluminum sliding windows
- Flush doors with S.S Fittings
- Decorative main door

Plumbing & Bathroom:

- GI pipes internal and external water supply
- Soil waste and vent and R.W. Pipe
- Cast iron pipe at ground floor
- Drainage connection for Washing Machine
- CP Bathroom & kitchen fittings of Jaguar equivalent
- Full height glazed titles
- Geyser recalled or equivalent

Electrical:

- Internal Electrification with copper wiring
- Reputed makes switches and accessories
- Electrical and telephone sockets
- Connections of Single phases power supply.

Safety:

- Surveillance and Security system at strategic points

Hygiene:

- Systematic Prescheduled Pest Control
- Non-toxic Paints

Leisure:

- Gymnasium
- Terrace with sit-out Lounge, Yoga and Meditation area, Walking track, Gazebo etc.
- Kids play area

