

5 Iconic towers of 40 floors, Tallest in Hebbal

Swanky Lifestyle...



SNN CLERMONT

Swanky Lifestyle. Privileged Luxury.
HEBBAL - OPP NAGAWARA LAKE



2 Apartments per floor, facing the Lake & Swimming Pool

Privileged Luxury...



Essar's Equinox Water's Edge is now SNN Clermont

At SNN, every project is unique and with a strong belief, "Bigger Dreams, Higher Ambitions and Deeper Commitment", we ensure to deliver quality dwelling that spells thematic living which not only makes lifestyle unique in all respects but also becomes a topic of living room discussions.

After acquisition from Essar, we re-branded the project as SNN Clermont, keeping in mind that this is the only project in Bangalore that will house 5 towers of 40 floors, the tallest and the best in Hebbal. The re-branding also allowed us to come up with an inspirational Big Idea – The Mustangs theme. These two unique features and many more you will experience, for sure will make you a proud owner of an amazing lifestyle.

The Inspiration.
The Theme.

SNN Clermont, a majestic lifestyle icon with plenty of attitude that stands tall & bold, Vaastu compliant, beautifully sculpted apartments that spell sheer beauty, waiting for you... Habitually, another innovative theme from SNN to encapsulate the distinctive spirit of people who are committed to the freedom of action and expression.

Project Details

7 Acres 23 guntas, 80% open space, Five towers of 40 floors, 422 units,
3 & 4 BHK Vaastu compliant apartments - Sizes from 2500 to 7500 Sq. Ft.

Exclusive Clubhouse & Sports Complex, SNN Signature Landscape,
2 apartments per floor & 3 lifts.



Your quest for right address ends here...

Located on the Outer Ring Road, yet tucked nicely away from noise and dust with views of the scenic Nagawara Lake. Just a short drive to airport and railway station, close to medicare and entertainment. SNN Clermont has the best location in Hebbal close to Manyata Tech Park and next to upcoming Marriott Hotel.



Launching Soon
SNN ONE NORTH



Why SNN Clermont is the best in Hebbal?

Hebbal Flyover	0.7 Kms
Dollars Colony / RMV Stage II	5.0 Kms
Sadashvinnagar	6.0 Kms
M.G Road	11.0 Kms
Malleswaram	12.0 Kms
Malls / Shopping	1.5 Kms
Banks / Hospitals	3.0 Kms
Schools / Colleges	3.0 Kms

Huge open space, ample brightness & ventilation from all sides, making your living pleasant 24x7.
Authenticated by IGBC Green Homes Gold Rating.



With plenty of open space that envelops the five towers and a huge lake in front, all the apartments in SNN Clermont will have ample cross ventilation of natural air and light forever. Blessed with this natural creation, our international architects P&T capitalized and planned a unique feature of two apartments per floor and intentionally placed the windows and doors at such an angle so as to create that natural flow of external air and light to the entire living space of your home, so you stay indoors in a thermal comfort with less weather irritation.





Clubhouse with Triple height Grand Entrance Lobby



Sports Complex with creche, Departmental Store, Pharmacy...

40,000 Sq. Ft. of Exclusive Clubhouse and 15,000 Sq. Ft. Sports Academy

For all your Wellness needs...

A Mind and Body Temple... A Treat for your senses.

An expanse of activities that will keep your evenings healthy and weekends entertained. The Clubhouse and the Sports Complex collectively are packed with an array of offerings that gives shape to the saying "Healthy mind in a Healthy body".



EXCLUSIVE CLUB FACILITIES:

- Swimming Pool, Children's Pool and Jacuzzi
- Coffee Shop
- Mini Theater with Luxurious seating for 25 persons
- Multipurpose Banquet Hall with large open terrace
- Poolside Deck and sprawling lawns
- Luxury Guest Suites
- Gymnasium and Health Club
- Reading and Recreational Room
- Board / Conference Room

SPORTS AND RECREATION:

Indoor:

- Billiards/Pool Tables
- Golf Simulator
- Squash
- Badminton
- Table Tennis
- Carrom

Outdoor:

- Cricket Pitch
- Tennis
- Beach Volleyball
- Walking and Jogging Track
- Children's Play Area and Sandpit
- Basketball
- Skating Arena & Cycling Track
- Multipurpose Play Area



Master Plan Legends

1. Entry Roundabout
2. Roundabout Fountain
3. Entrance Water Feature
4. Meditation Garden & Reflexology Path
5. Jogging Track / Walkway
6. Block Entry Drop-off area
7. Pool deck Lounge
8. Changing Room
9. BBQ Pit Area
10. Main / Lap pool
11. Kid's pool
12. Water Spout
13. Fire Engine Access
14. Block Entry
15. Driveway Ramp to E-deck Level
16. Party / Activity Lawn
17. Sculpture Plaza
18. Shading Trellis
19. Clubhouse Garden Entry
20. Clubhouse Drop - off Area
21. Natural Walking Garden
22. Water Feature
23. Open Plaza
24. Skating / Cycling Track
25. Skating Arena
26. Tennis Court
27. Multi-Purpose Court
28. Children's Playground
29. Beach Volley Ball
30. Block Drop-off
31. Community Plaza
32. Half-court Basketball
33. Cricket Pitch
34. Observation Area
35. Unit Garden
36. Driveway @ Ground Level
37. Reserved area For Parking
38. Sports Block
39. Entrance Gate





For the winner in you who hates to wait....3 Lifts, two apartments per floor, Feel Privileged.... Feel Elated....



CHOICE OF INTERNAL FINISHES

GENERAL SPECIFICATIONS:

- Spacious apartment interiors with a floor-to-ceiling height of approx. .10ft*
- Sliding French windows for deck access
- Remaining windows with extra tall design for maximum light and ventilation
- Large format Vitrified tiles flooring in living, dining, kitchen and passage areas
- Laminated wooden flooring in master bedroom
- Vitrified tiles flooring in other bedrooms
- Wooden finish tiles in all deck areas
- Provision for split air conditioning units
- Provision for outdoor Jacuzzi in units with Jacuzzi
- Electrical switches by Legrand / Schneider Crabtree or equivalent
- Aluminium / UPVC sliding windows with Double Glazed Glass Unit (DGU) for enhanced sound insulation and Mosquito Mesh
- Utility: Single bowl sink with drain board
- Main Doors of European engineered Flush shutters of Walnut/Teak/Oak Veneer finish
- Main Door will have superior security door locks-Godrej / Yale
- All door frames will be European engineered door frames with architraves
- USB Power socket by the Bed side table
- Provision for motorized curtain for living and master bedroom windows
- Video door entry phone with color display VDP at entrance door

BATHROOM SPECIFICATIONS:

- Luxurious sanitary and bath fixtures from leading brands such as Roca / Grohe / Kohler / Gebrüt or equivalent
- Exhaust fans provided in each bathroom
- Maid's bathroom to have sanitary and bath fixtures from Cera / Parry ware/Jaguar or equivalent
- Combination of tiles with imported/composite Marble counters
- Rain shower in Master Toilet

UPGRADE TO PLATINUM

(Available for all apartment types)

- Imported/composite marble flooring in Master bedroom, kitchen, living, dining and passage areas
- Laminated wooden flooring in other bedrooms
- Master bedroom toilet fully clad in imported Marble
- Shower enclosure in all toilets
- Video door entry phone with colour display VDP at entrance door & Master Bedroom
- Main door will have Biometric door locks Godrej / Yale

BATHROOM SPECIFICATIONS:

- Upgraded imported sanitary and bath fixtures from leading brands such as Duravit / Laufen / Grohe / Hansgrohe / Toto or equivalent
- 25 liters capacity water heater in Bedroom toilets
- 15 liters capacity water heater in Maid toilet

*Floor-to-ceiling height without any tiling, paint, POP or false ceiling

PROPOSED FEATURES:

- Total development spread across 7 acres 23 guntas
- The towers will be amongst the tallest in the city
- 3, 4 BHK Apartments, 4BHK + Home Theatre Penthouse with Swimming Pool, Garden units with independent Gardens
- Apartment areas starting from 2,500 sq. ft.
- Spaciously designed layouts for maximum ventilation
- 2 automated high speed passenger elevators and 1 service/stretcher elevator in each tower
- Exclusive entrance podium with beautiful landscaping
- Top-end club and recreational amenities
- Medical centre and convenience shopping
- Provision for creche
- Professional property and facility management
- Multiple parking levels

ENVIRONMENT-FRIENDLY FEATURES:

- Solar power system for energy conservation
- Sewage treatment plant - recycled water to be used for gardening and flushing purposes
- Water treatment plant for a healthy lifestyle
- Rainwater harvesting for replenishing potable water
- IGBC Pre Certified LEED Gold Rated Green Building

SAFETY AND SECURITY SYSTEMS:

- Comprehensive fire safety measures
- Security system to ensure complete safeguarding
- 100% power backup for common areas

PROJECT DESIGNED AND PLANNED BY A TEAM OF INTERNATIONALLY ACCLAIMED CONSULTANTS:

- Architect: P & T Consultants, Singapore
- Structural and Services Consultants: Buro Happold, UK
- Landscape Consultants: Site Concepts, Singapore





Picturesque backdrop. Live above the Rest!



“Signature Tower”

&

“Villas in the Sky”

Sure to take fine living
a notch higher...

Residences with extra large spaces and
exclusive lifestyle privileges...

It's high-end, intelligent living for
those who like the future... today.

Welcome to a new world of Privileged Luxury



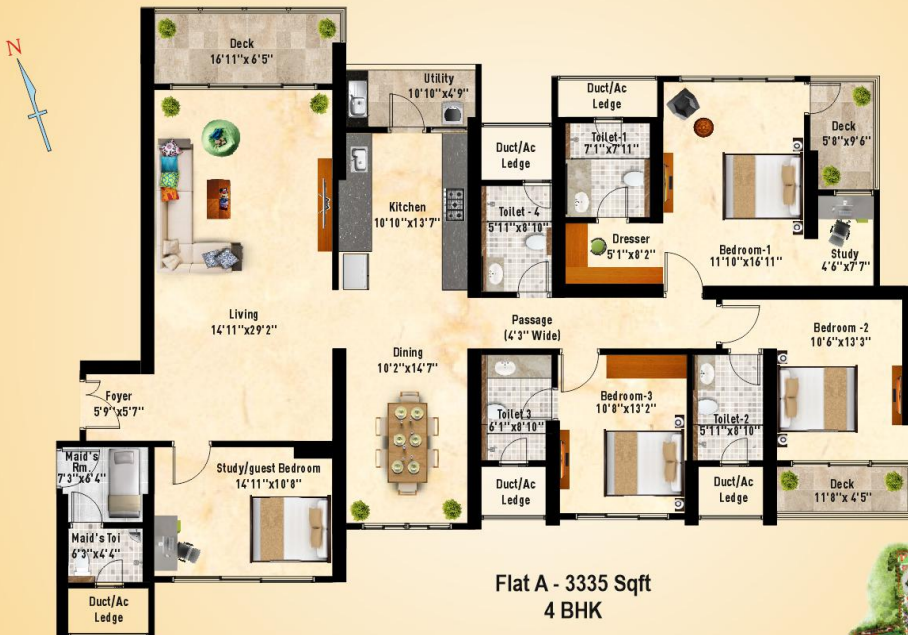


Villas in the Sky at SNN Clermont - Vaastu Compliant, 3 sides open apartments; offering a breakthrough panoramic view every day.



Villas in the Sky – 5260 Sqft
4 BHK (Best) with Home Theater







**Flat B - 3880 Sqft
4 BHK**

**Flat A - 3165 Sqft
4 BHK**



3rd Floor Onwards





**Flat B - 3975 Sqft
4 BHK**

**Flat A - 3225 Sqft
4 BHK**



4th Floor Onwards





Flat B - 3210 Sqft
4 BHK

Flat A - 2635 Sqft
3 BHK



3rd Floor Onwards





**Flat B - 3265 Sqft
4 BHK**

**Flat A - 2620 Sqft
3 BHK**



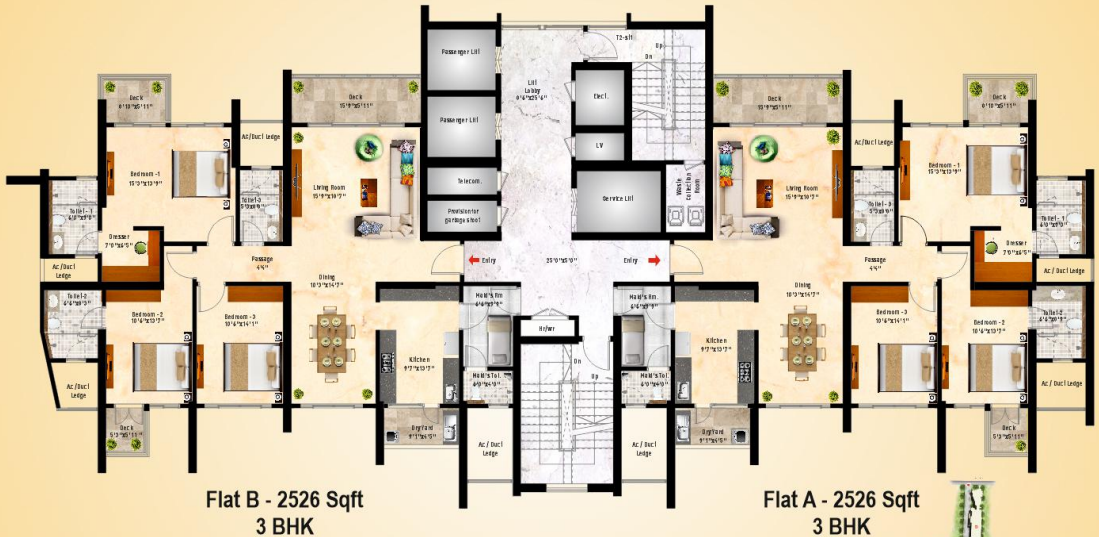
4th Floor Onwards





3rd Floor Onwards





4th Floor Onwards





Flat B - 3800 Sqft
4 BHK

Flat A - 3067 Sqft
4 BHK



3rd Floor Onwards



(Even Floors)

Tower 1

Typical Floor Plan



4th Floor Onwards



Ongoing Projects



SNN Raj Eternia - Haralur Road, Sarjapur

Close to 40 acres of lush green space

1 BHK 560 - 575 Sft. 2 BHK 1225 - 1270 Sft. 3 BHK 1460 - 1875 Sft.

4 BHK 2805 - 3265 Sft. Penthouse 3335 - 3565 Sft.

5 Star Clubhouse and Amenities.

Floor to Ceiling Windows, Sky Gardens.



SNN Raj Viviente - Off Banneraghatta Road

6.5 Acres - 62 Villas, 4 BHK 3875 Sft.

Excellent location within the City,

SNN's First Villa Project, 100% Vaastu Compliant

850 Sft. of green area for each Villa.



SNN Raj Greenbay - Electronic City Phase II

16 acres - 1030 Apartments, G+9 Floors

1 BHK 630 Sft. 2 BHK 1160 - 1395 Sft.

3 BHK 1395 - 1940 Sft. 4 BHK 2150 - 2225 Sft.

Unique Forest themed landscape, 30 Recreational Activities,

4 Swimming Pools largest in Bangalore Residential Segment.



SNN Raj Serenity - Begur Main Road

30 Acres - 2500+ Units, G + 13 Floors

2 BHK 905 - 1350 Sft., 3 BHK 1150 - 1960 Sft. & 4 BHK 2180 Sft.

One Lakh Sft. Clubhouse, Biggest in Bangalore,

3 Sides Open Apartments, Natural and Man-made Lakes.



SNN Raj Spiritua - Banashankari

1 Acre - 69 Units, 1 Tower, G + 15 Floors

3 BHK 2425 - 2440 Sft. and 4 BHK 3300 - 3335 Sft.

High-end Apartments, Marble flooring for entire Apartment

Signature Clubhouse. Motion controlled lights for toilets, Digital Locks.



SNN Raj Grandeur - Bommanahalli

4.5 Acres - 355 Units, 7 Towers, G + 14 Floors

2 BHK 1215 - 1495 Sft. and 3 BHK 1360 - 1885 Sft.

SNN Signature Landscape and Fully Loaded Club House,

Most of the Apartments are 3 sides open.

Awards



Accolades

SNN Builders

- "Developer of the Year" by Berg International, Singapore
- "Excellence in Delivery of Projects on Time" by Realty Plus
- "Developer of the Year" by CMO Asia, Dubai
- "Developer of the Year" by Bangalore Real Estate

SNN Raj Greenbay

- "Best Themed Project" by Silicon India
- "Best Residential Project" by Brands Academy, Delhi
- "Best Themed Project" by Berg Int'l, Singapore

SNN Raj Eternaia

- "Best Luxury Project" by CMO Asia, Dubai
- "Best Luxury Project of the Year" by Brands Academy, Delhi
- "Best Residential Project" by Berg Int'l, Singapore

SNN Raj Serenity

- "Best Mid-Segment Project" by CNBC Awaaz
- "Best Mid Range Residential Project" by Silicon India
- "Best Clubhouse in south India" by Berg Int'l, Singapore

CSR Initiatives

- "Govt. School for Serenity Labourer's Children"
Realty Plus Excellence Award

Aspirations Fulfilled



SNN CLERMONT

Swanky Lifestyle. Privileged Luxury.

HEBBAL - OPP NAGAWARA LAKE



Site Address:

SNN Clermont, Opp. Nagawara Lake
& Lumbini Gardens, Outer Ring Road,
Hebbal, Bangalore - 560 045

Cell: +91 8095 81 81 81

Email: umas@snnbuilders.com

Corporate Address:

SNN Mind's Eye,
No.4, 2nd Floor, Elephant Rock Road
3rd Block Jayanagar, Bangalore - 560 011

Tel: 080 40 22 22 01

www.snnbuilders.com