





EXPERIENCE THE EPITOME
L
LUXURY LIVING.



SAVERA

— PRARAMBH —

Experience the epitome of comfortable living at Savera Prarambh, a captivating residential haven crafted by the visionary Shyaswa Group. Nestled amidst serene landscapes, this harmonious sanctuary boasts exquisite apartments and a wealth of amenities. From the tranquil swimming pool and lush gardens to the state-of-the-art home theatre and empowering gym, every detail is meticulously designed to immerse you in a world of refined elegance, where cherished memories are woven and dreams find their true home.





AMENITIES



2 LEVEL BASEMENT PARKING



COMMON PLOT 1



COMMON PLOT 2



COMMON SPACE FOR SOCIETY



24X7 SECURITY



ROOF TOP SOLAR





Experience The Essence of Harmony

Savera Prarambh's Harmonious Trio of Residential Blocks

A Residential Haven with 220 Exquisite Apartments. Discover the Perfect Home in our Exclusive Collection of 2BHK & 3BHK Homes, Spread Across 14 Floors in Each Block. Experience Unparalleled Living with No Commercial Spaces, Where Every Detail is crafted for Your Comfort and Convenience.





Indulge in the ultimate luxury and relaxation in our stunning bedroom spaces. With carefully selected interior design elements and high-end furnishings, our bedrooms are the epitome of comfort and style. Experience a restful night's sleep on our plush, premium mattresses, while enjoying the gentle glow of ambient lighting. Our spacious closets and storage solutions ensure ample space to keep your belongings organized and easily accessible. Wake up feeling refreshed and rejuvenated in our luxurious bedrooms, designed to offer the perfect sanctuary for a peaceful night's rest.







BUILDING ATTRIBUTES & SPECIFICATIONS

STRUCTURE

Our apartments are built on an earthquake-resistant R.C.C. frame structure to ensure the safety and security of our residents.

DOORS & WINDOWS

We understand that your front door is the first impression of your home. That's why our main door comes with a decorative veneer finish with a wooden frame. All other doors are flush doors with wooden frames. Our windows are aluminum sliding windows with stone sills to add a touch of elegance to your home.

ELECTRIFICATION

At Savera Aarambh, we understand the importance of electrical safety. That's why all our apartments come with concealed copper wiring with modular switches and sufficient points, including AC and geyser points. Our switches and cables are ISI certified to ensure that they meet the highest standards of safety.

ELEVATORS

We have installed belt-operated gearless elevators with an Automatic Rescue Device (ARD) system to ensure that you have a safe and smooth ride every time.

TOILET & PLUMBING

Our apartments come with designer glazed tiles up to the lintel level and premium quality bath fittings and sanitary wares to provide you with a luxurious and comfortable experience.

FLOORING

We have used 800x800 good quality vitrified tiles for the flooring of our apartments. Our balconies feature vitrified rustic tiles, and we have used china mosaic for heat reflection and waterproofing treatment in the terrace.

KITCHEN

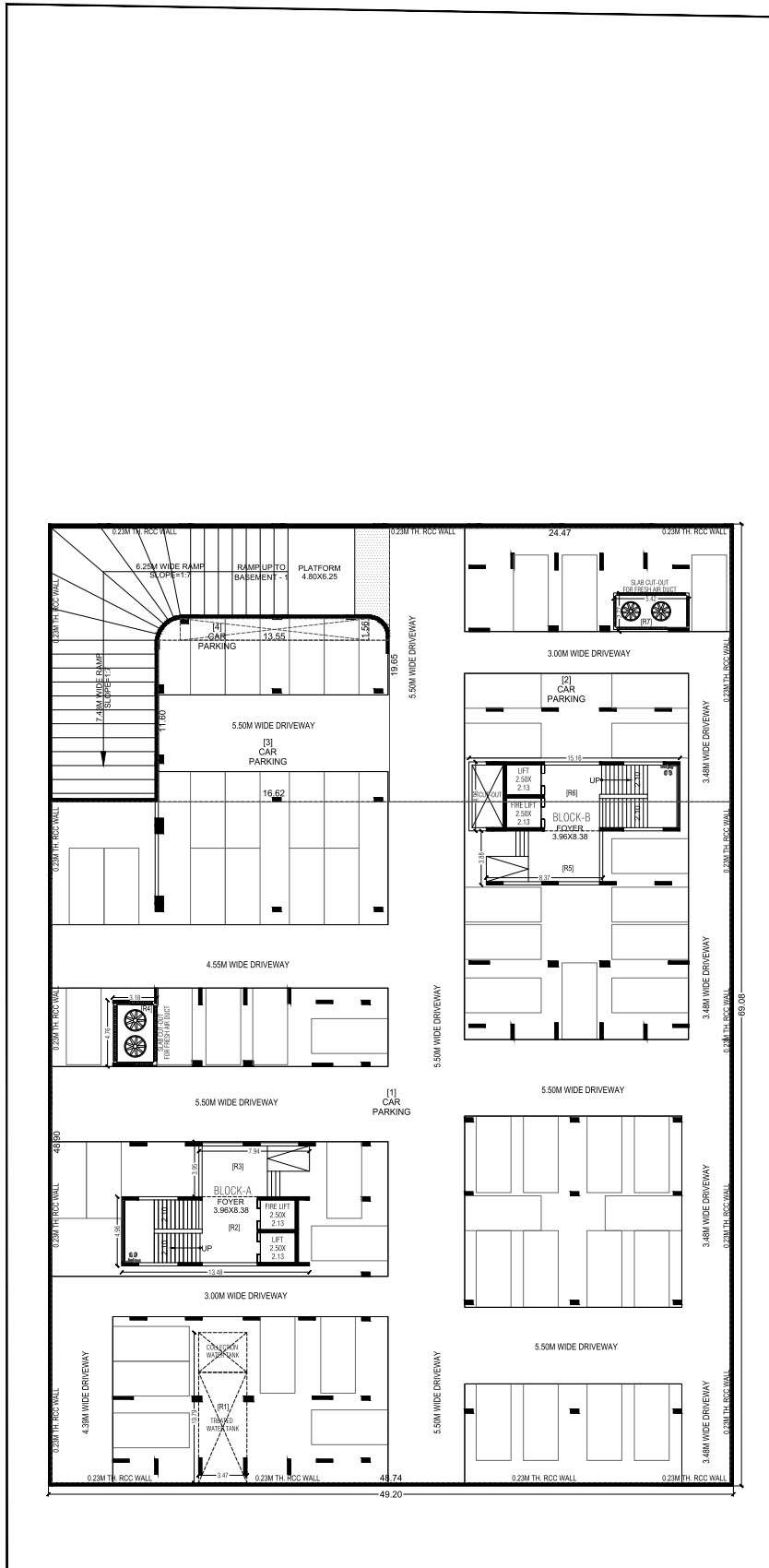
The kitchen is the heart of the home, and we have designed it to meet all your cooking needs. Our apartments come with a granite top platform with an S.S. sink and designer glazed tiles up to the lintel level.

WALL FINISH

We have used a single coat of internal mala plaster with putty finish and an external double coat texture with acrylic paint to give your home a smooth and elegant finish.



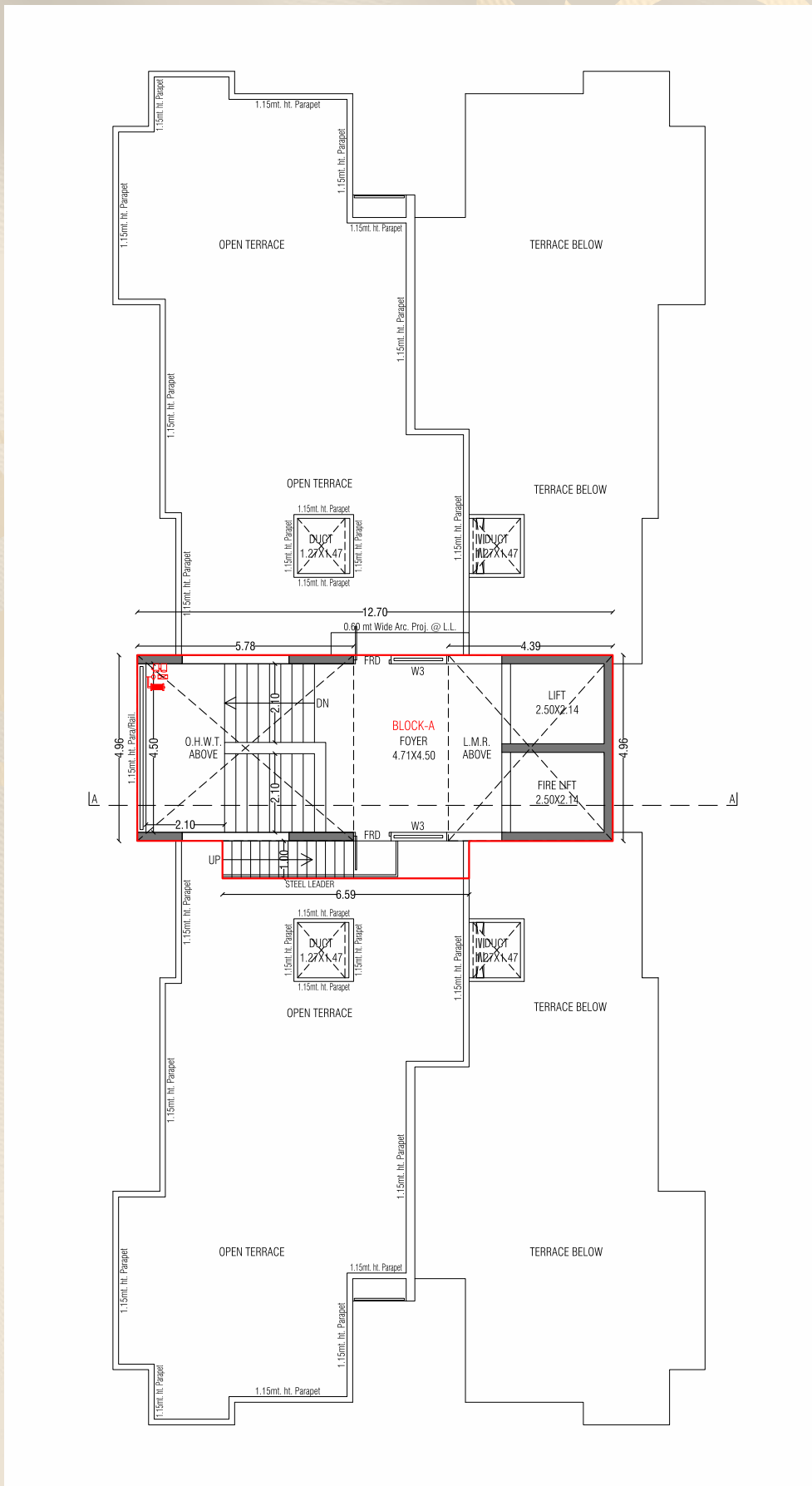
BASEMENT 2



North Facing Entrance



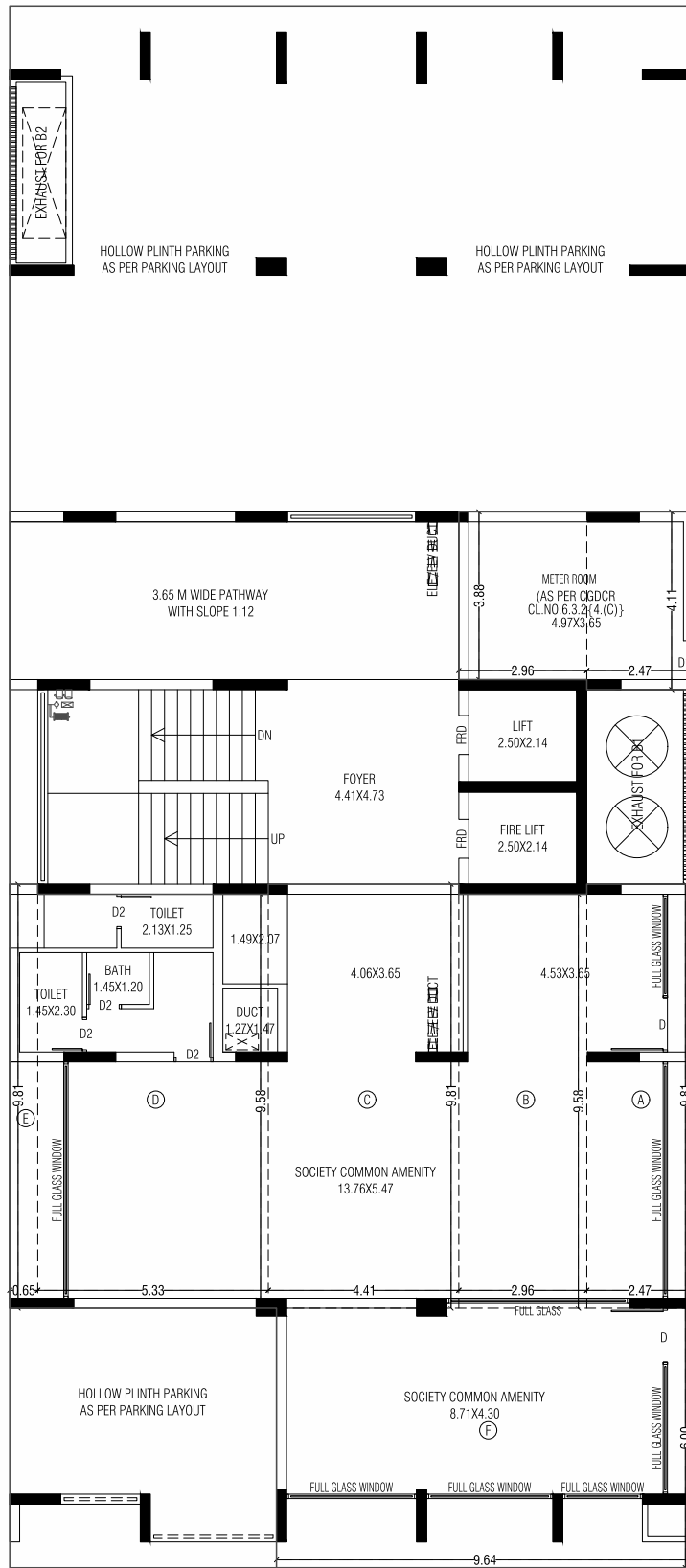
TERRACE PLAN BLOCK A



North Facing Entrance



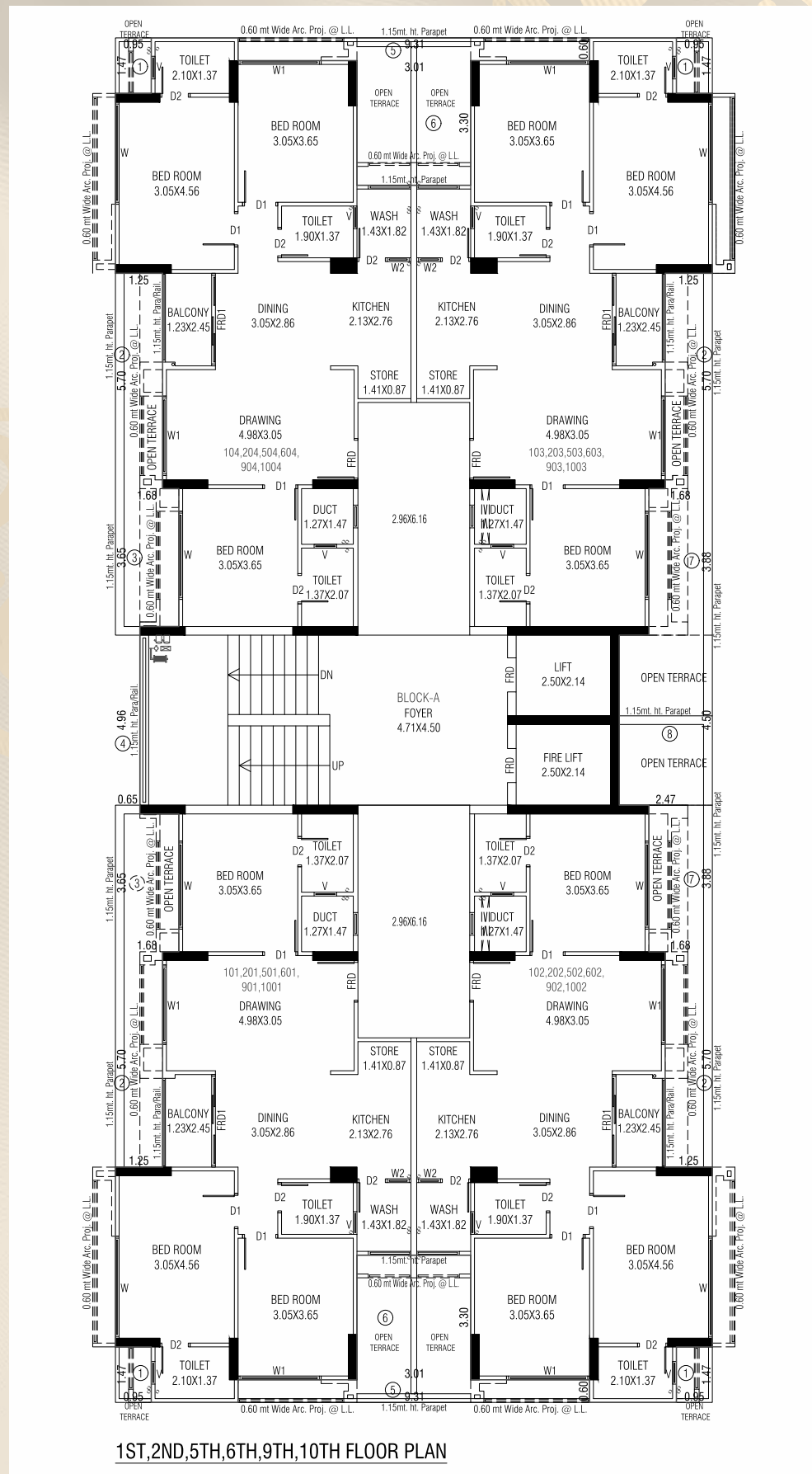
A BLOCK GROUND PLAN



North Facing Entrance



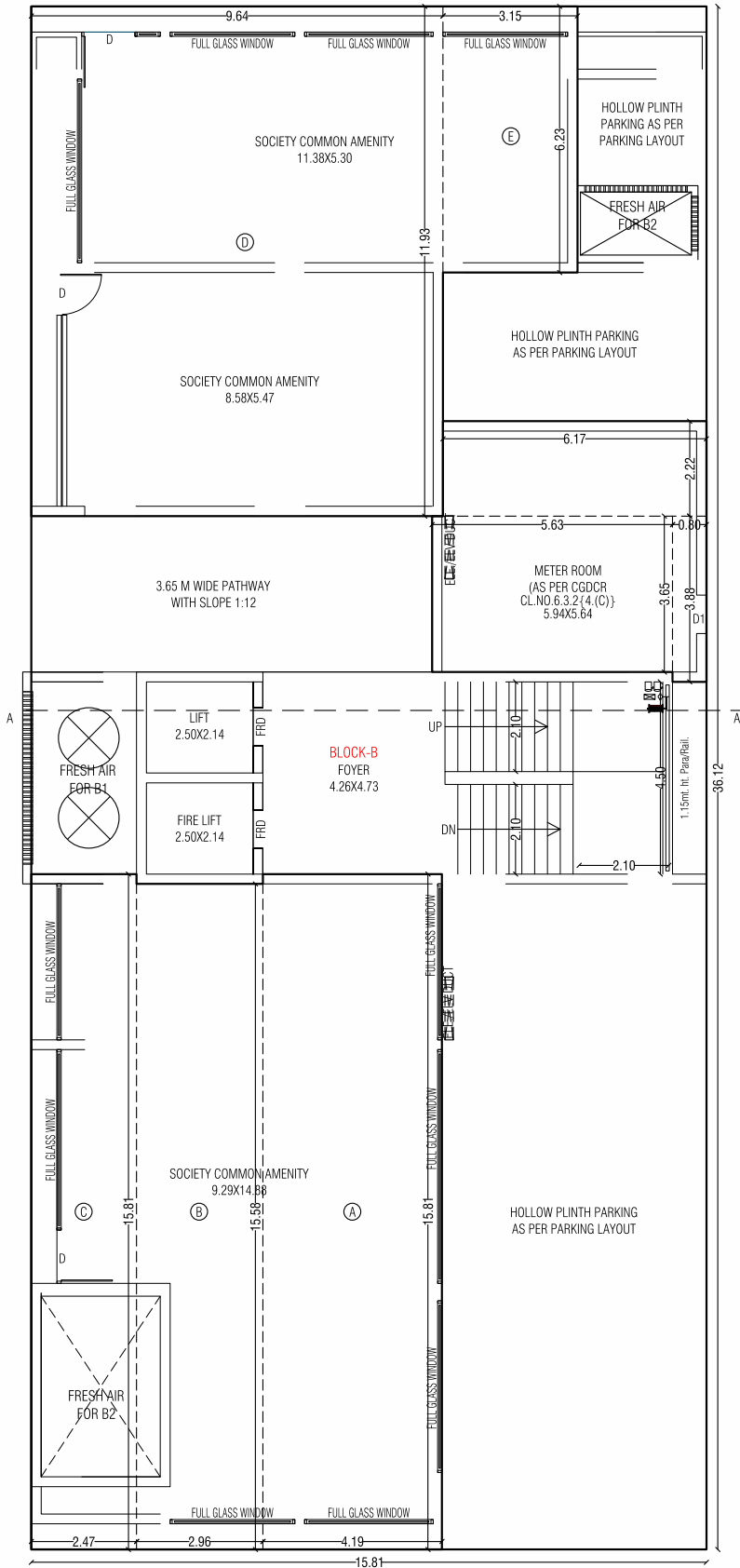
A & B FLOOR PLANS 1



North Facing Entrance



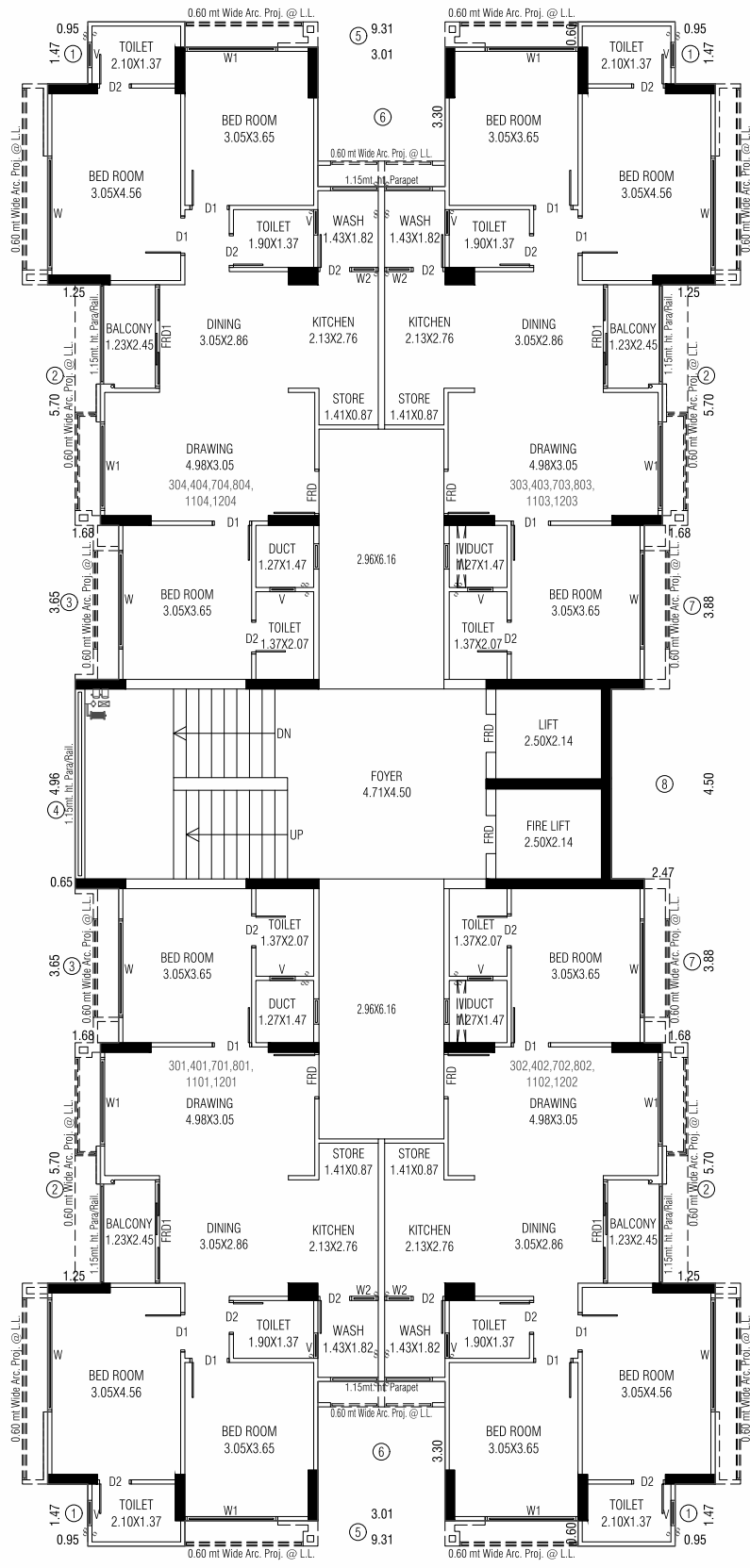
B BLOCK GROUND PLAN



North Facing Entrance



A & B FLOOR PLANS 2



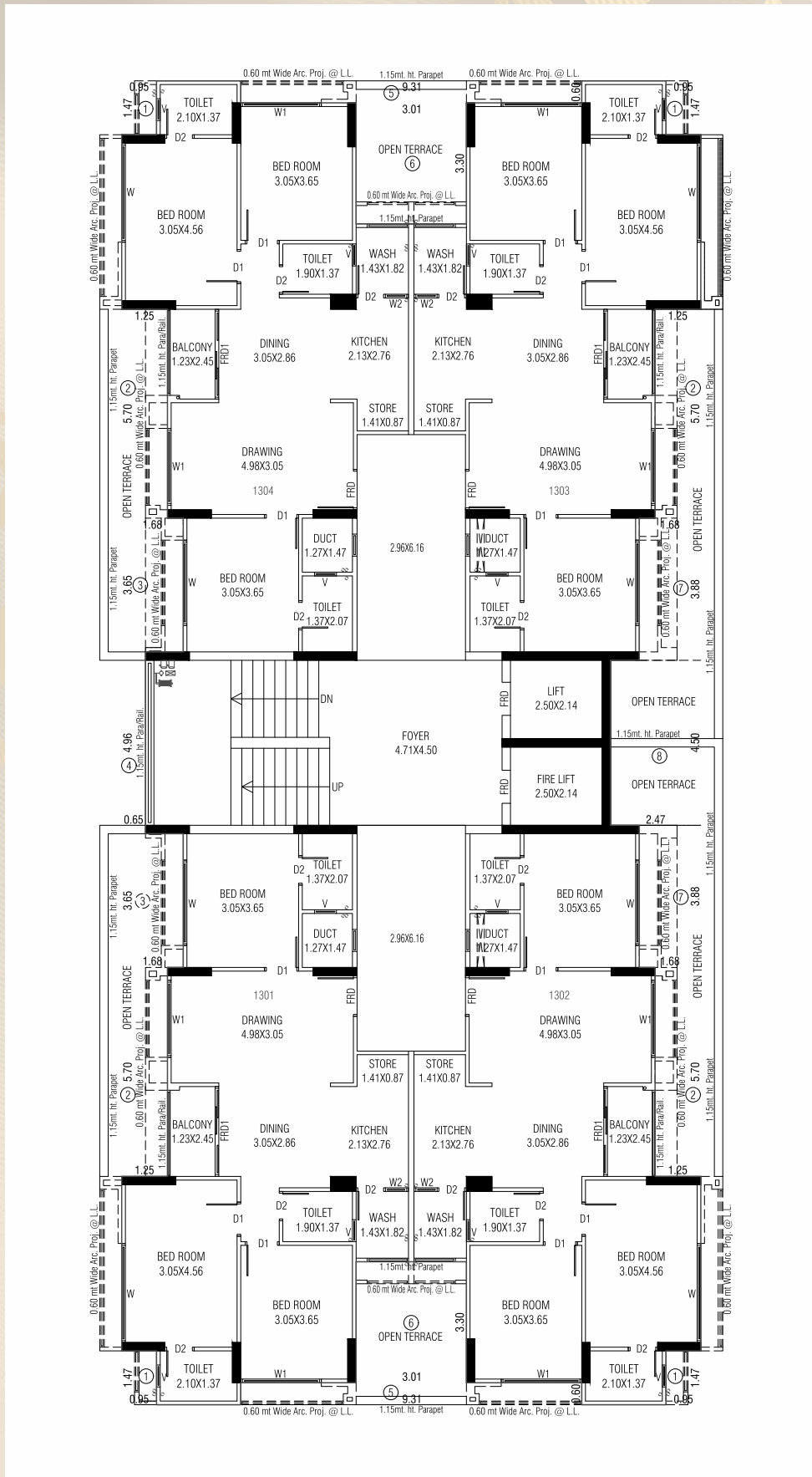
3RD,4TH,7TH,8TH,11TH & 12TH FLOOR PLAN



North Facing Entrance



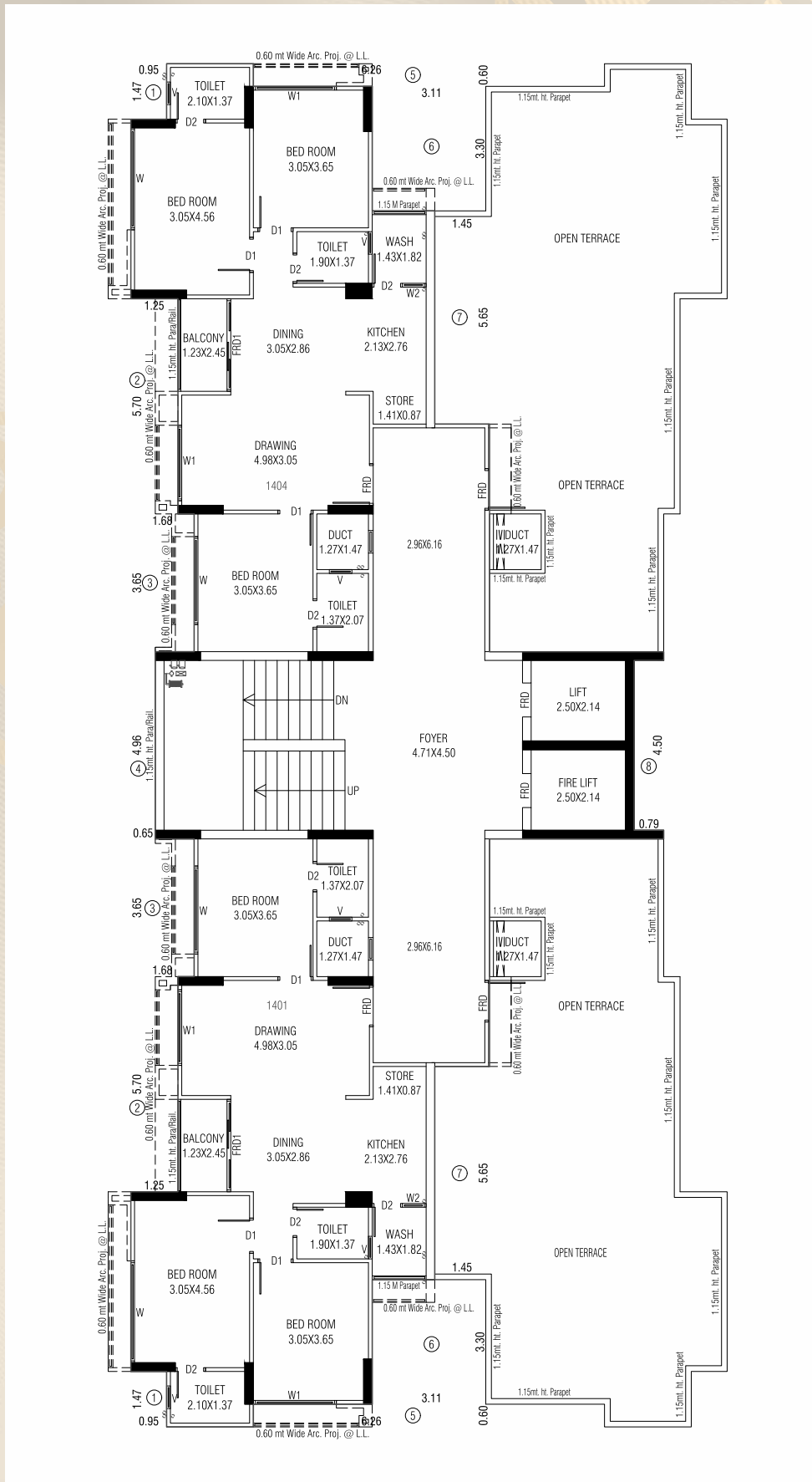
A & B 13th FLOOR PLANS



North Facing Entrance



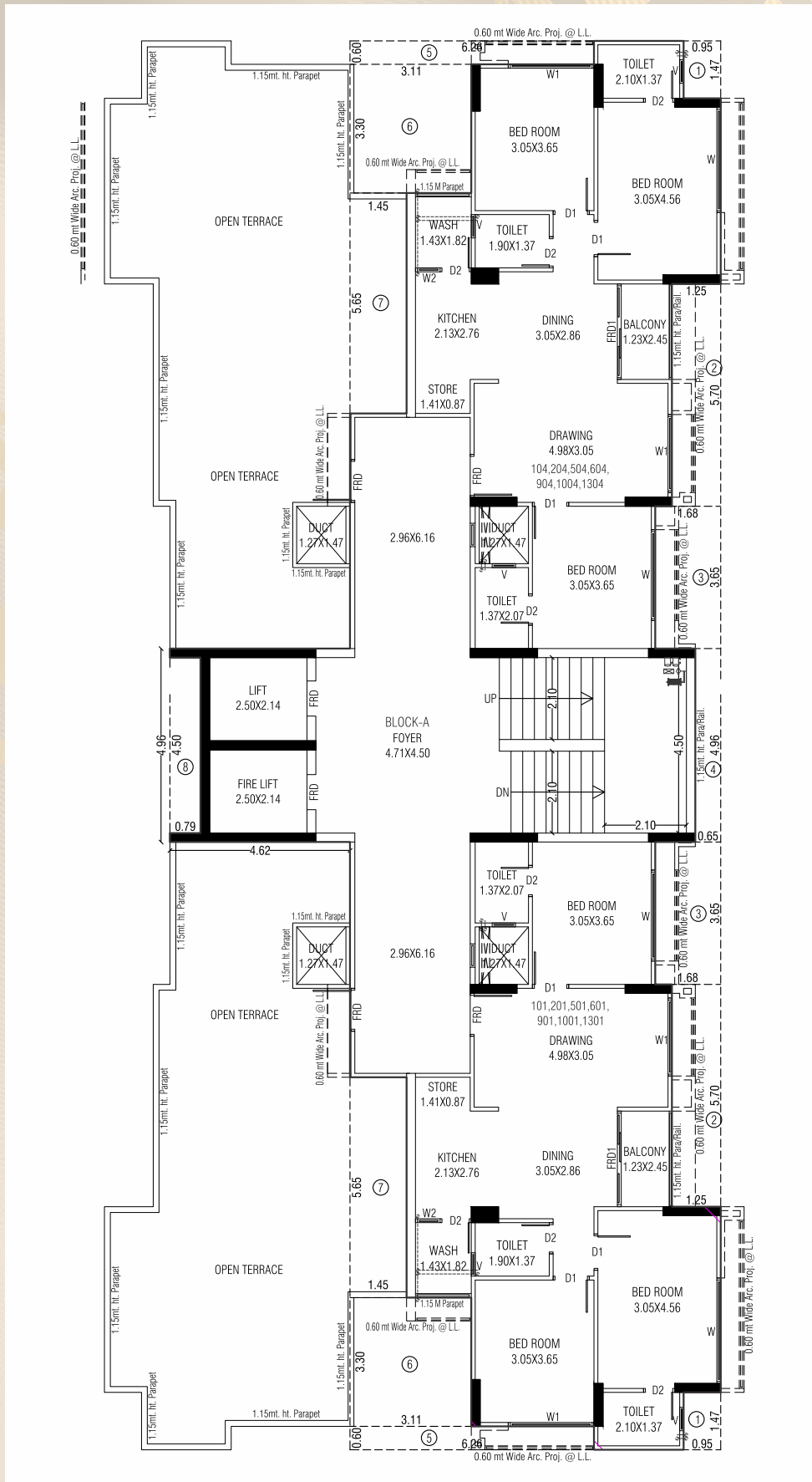
A 14th FLOOR PLANS



North Facing Entrance



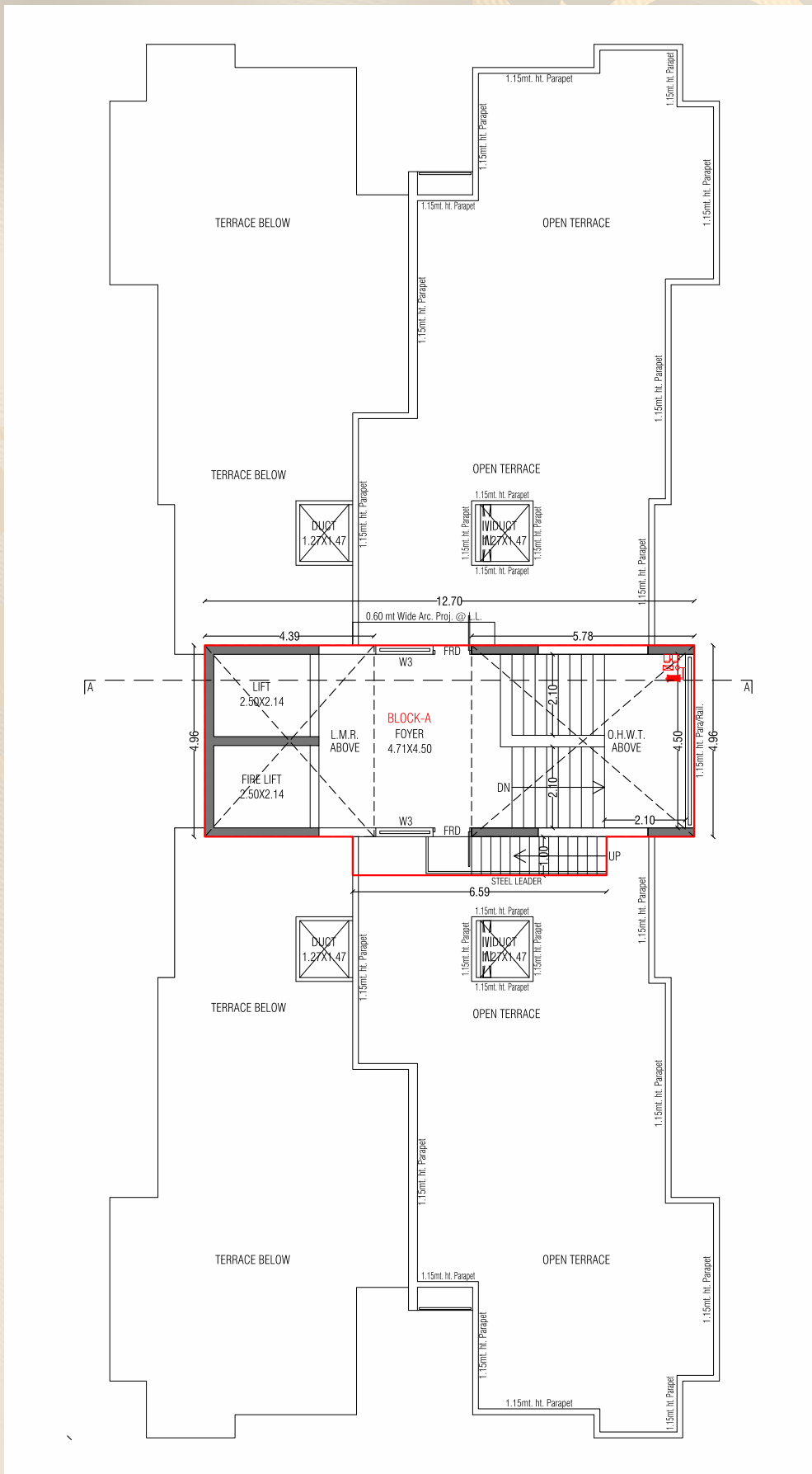
B 14th FLOOR PLANS



North Facing Entrance

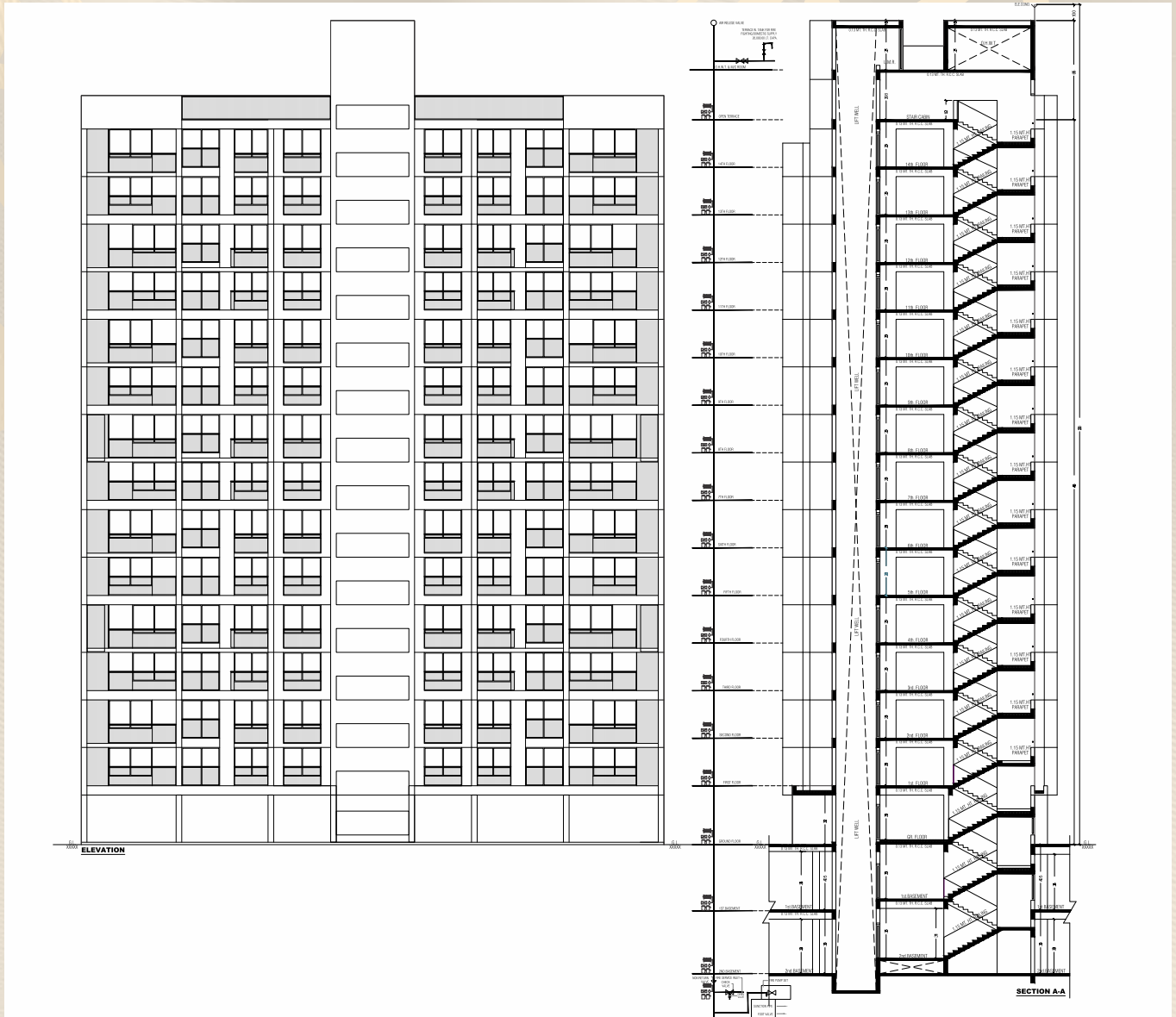


TERRACE PLAN BLOCK B





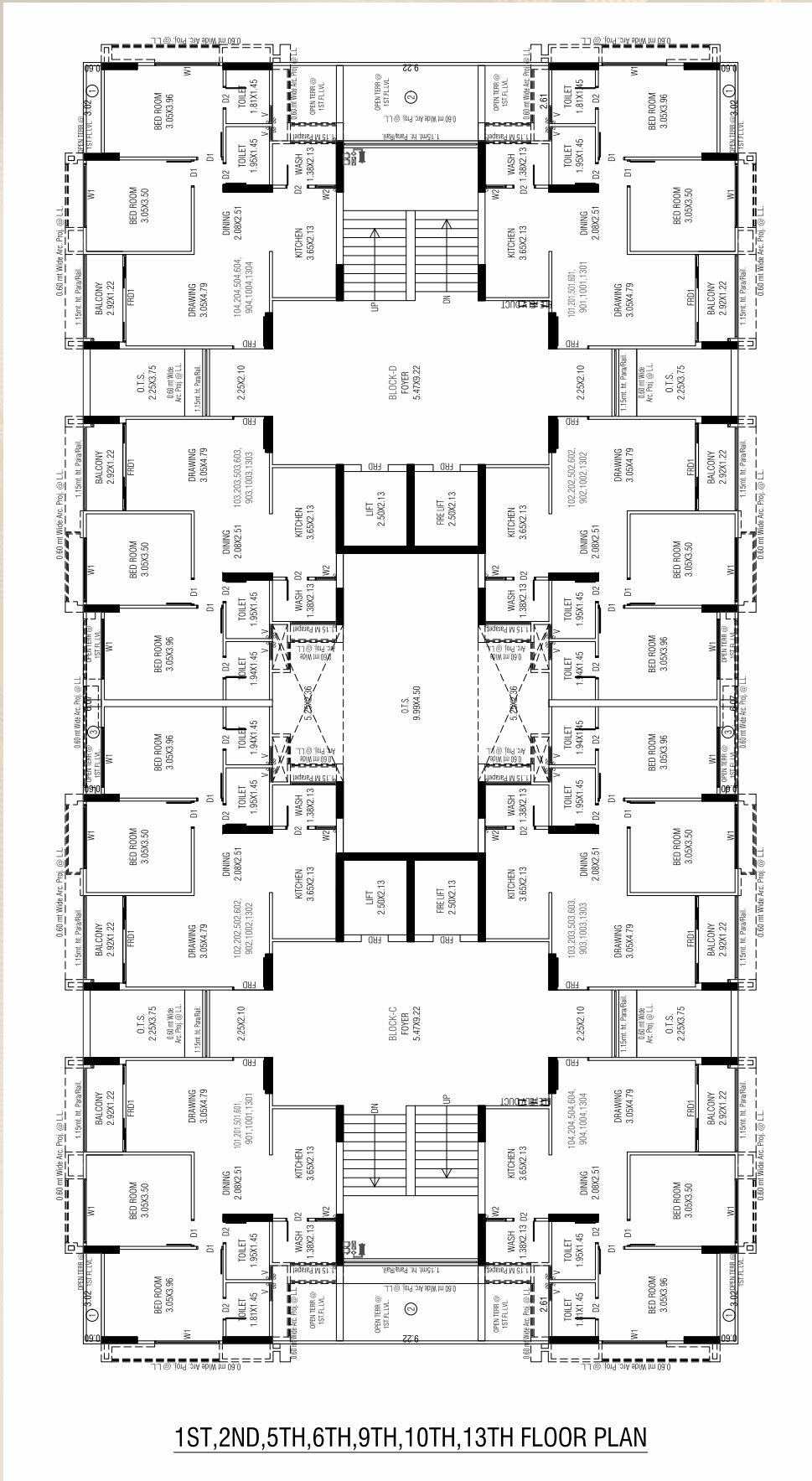
BLOCK A & B ELEVATION & SECTION PLAN



North Facing Entrance



C & D FLOOR PLANS 1

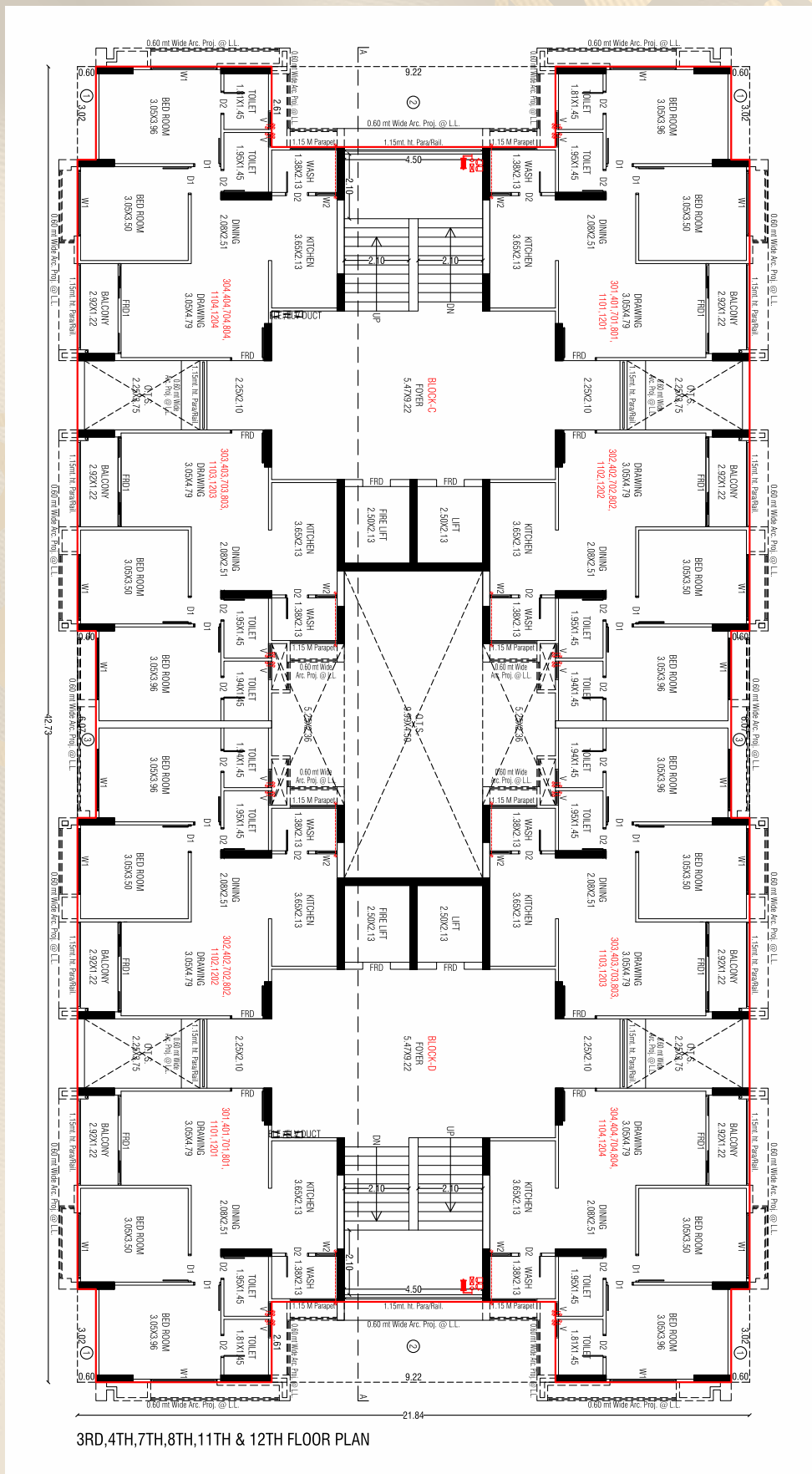


1ST,2ND,5TH,6TH,9TH,10TH,13TH FLOOR PLAN



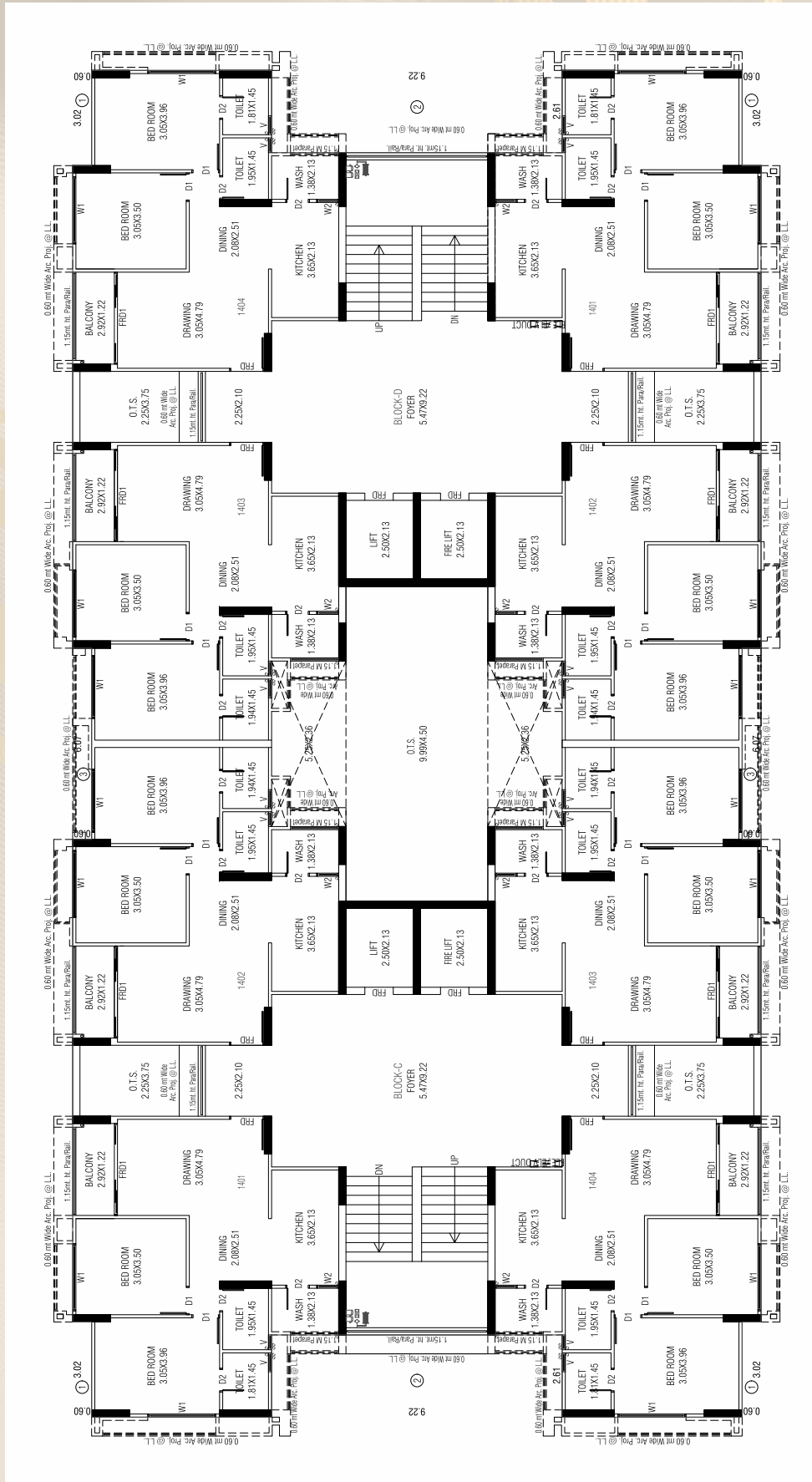


C & D FLOOR PLANS 2





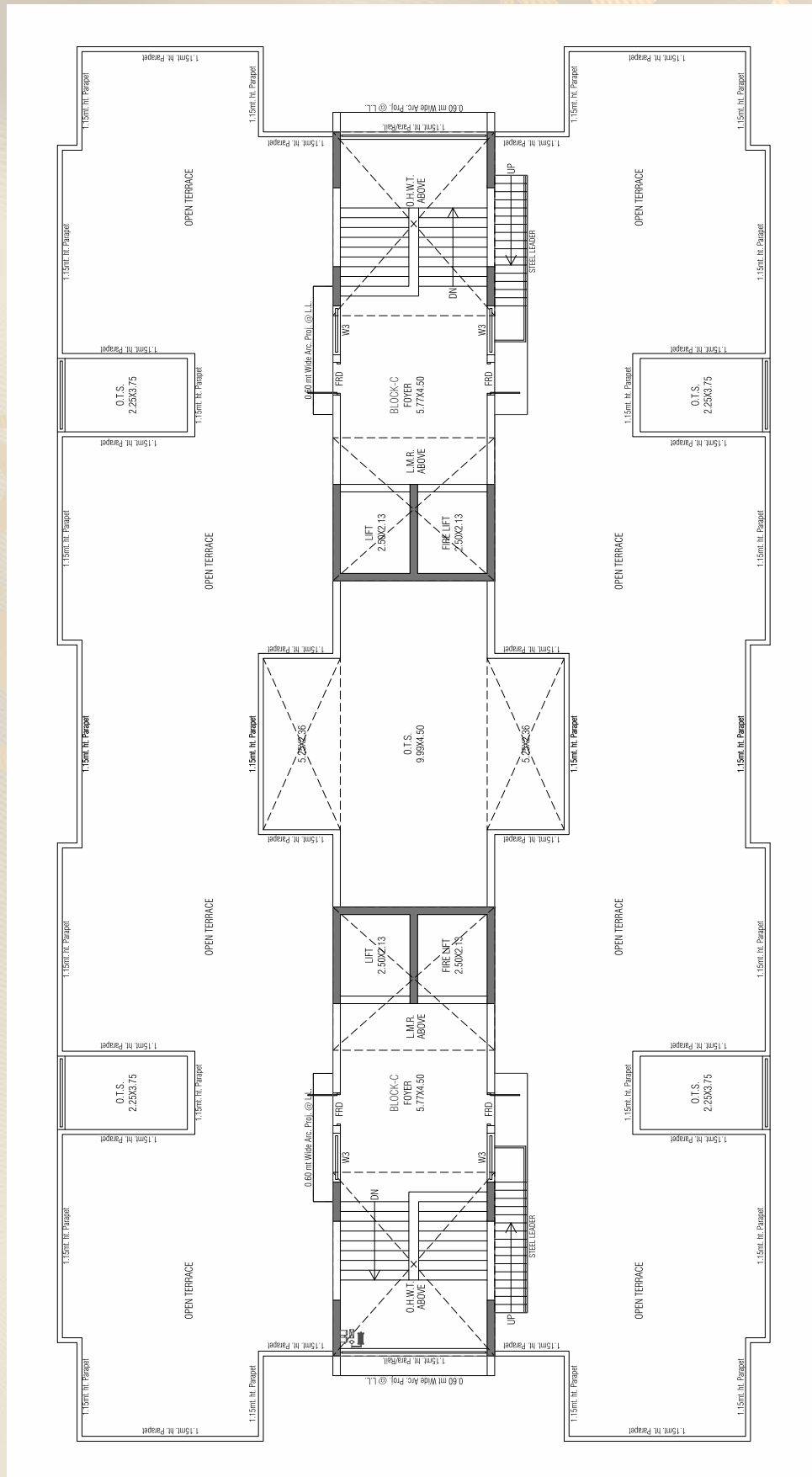
C & D 14th FLOOR PLAN



North Facing Entrance



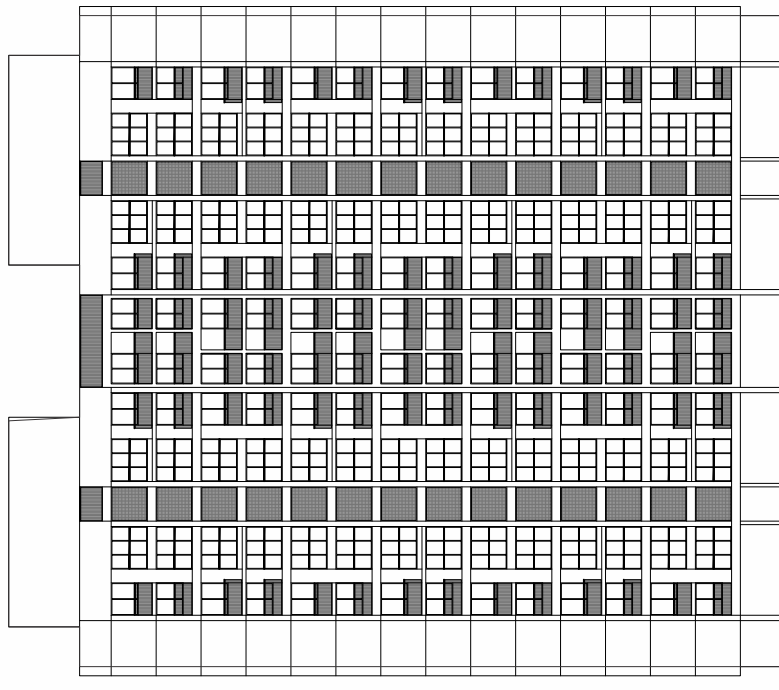
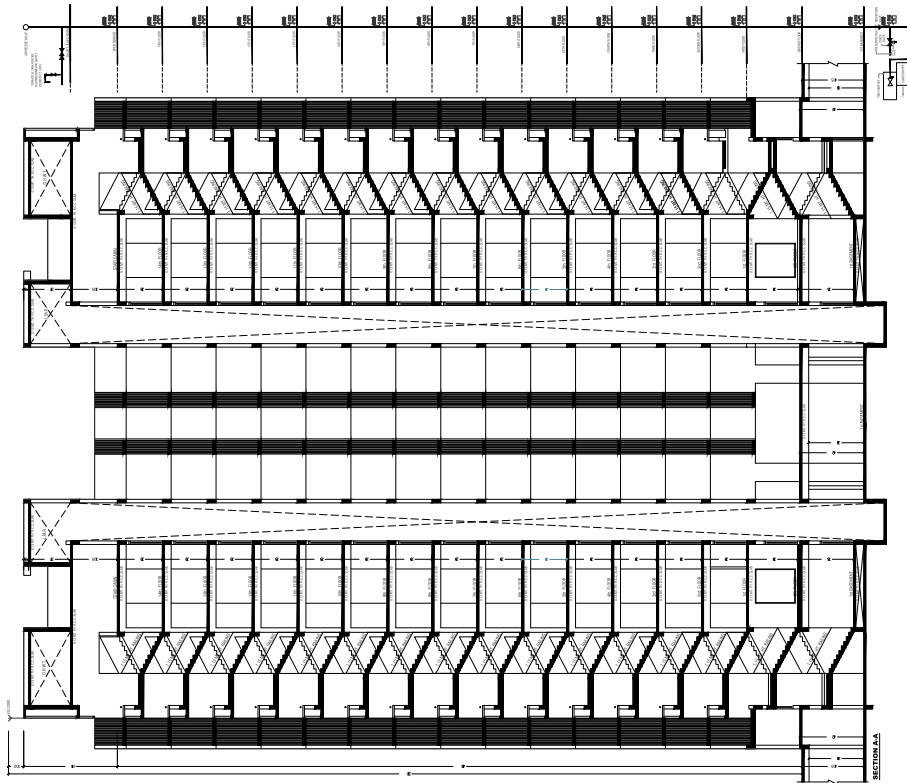
C & D TERRACE PLAN



North Facing Entrance



BLOCK C & D ELEVATION & SECTION PLAN



North Facing Entrance



Disclaimer: This brochure/document does not constitute an offer and/or acceptance and/or contract and/or agreement and/or transaction and/or any intention thereof of any nature whatsoever. The layout plan, numbers, buildings, wings, structure, common areas, facilities, information, images, sketches, visual references, specifications, and other details herein are purely indicative and subject to change without prior notice. The developer reserves the right to make additions, deletions, or modifications to the project or any part thereof at their sole discretion. The actual product may vary/differ from what is indicated herein. All dimensions mentioned in this document may vary/differ due to construction exigencies. The photographs contained herein are stock/standard images used to indicate a conceptual development/lifestyle, and have been taken at a location other than Savera Aarambh project site. No representation or warranty is made or intended as to the accuracy or completeness of the information herein or as to its suitability or adequacy for any purpose. The final product is subject to approval by the competent authority and prevailing law/act/guideline at the time.

Scan this QR Code to reach our Location



Scan this QR Code for Elevation Glimpse



Scan this QR Code for Walkthrough Video



EXPERIENCE LUXURY LIVING AT SAVERA AARAMBH. CONTACT US TODAY TO BOOK YOUR DREAM HOME.

Promoter & Developer



CORPORATE ADDRESS

3rd Floor, KIFS tower, Ambali Bopal Road, Ambali, Ahmedabad-380058



SITE ADDRESS

Savera Prarambh, Behind kavisha Panaroma, Opp Swastik Vivanta, South Bopal Extension Road, Ghuma, Ahmedabad.



CONTACT US
+91 9090547000



EMAIL ID
Sales@shyaswa.com



WEBSITE
www.shyaswa.com