



Site Address:

GH-03, Jaipuria Sunrise Greens, NH-24, Ghaziabad.

Corporate Address:

409, Elegance Tower, Jasola District Centre, New Delhi-110025.

Phone: 8010303030, 011-40740000

Website: www.riseprojects.in



1/2/3 BHK PLANS

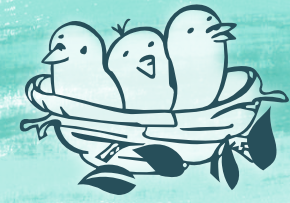
- 1 Bedrooms + 1 Toilets (590 sq.ft.) (Type - 1)
- 1 Bedrooms + 1 Toilets (590 sq.ft.) (Type - 2)
- 2 Bedrooms + 1 Toilets (750 sq.ft.) (Type - 1)
- 2 Bedrooms + 1 Toilets (790 sq.ft.) (Type - 2)
- 2 Bedrooms + 2 Toilets (890 sq.ft.)
- 2 Bedrooms + 2 Toilets + Study (1050 sq.ft.)
- 3 Bedrooms + 2 Toilets (1250 sq.ft.)

घर हो तो कुछ different
घर हो तो

organic



www.riseorganicghar.co.in

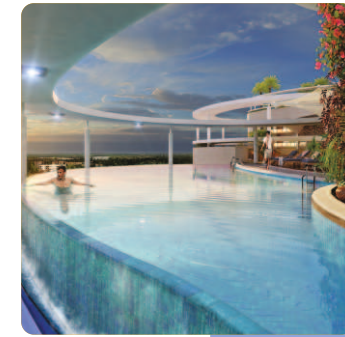


1/2 BHK Residences

1/2/3 BHK homes, the habitats at Organic Ghar are no less in indoor space for socializing, working out or relaxing in unrivaled comfort. With great organic interiors and design complete with a breathtaking arch-like skylight visible from your luxurious balcony, you'll feel like a much deserved vacation every day, right at home. As residents, you receive complete access to the infinity swimming pool, an open space green terrace, a fitness centre with a trainer just to name a few.



SALIENT FEATURES



1 Bedrooms + 1 Toilets (590 sq.ft.) (Type - 1)



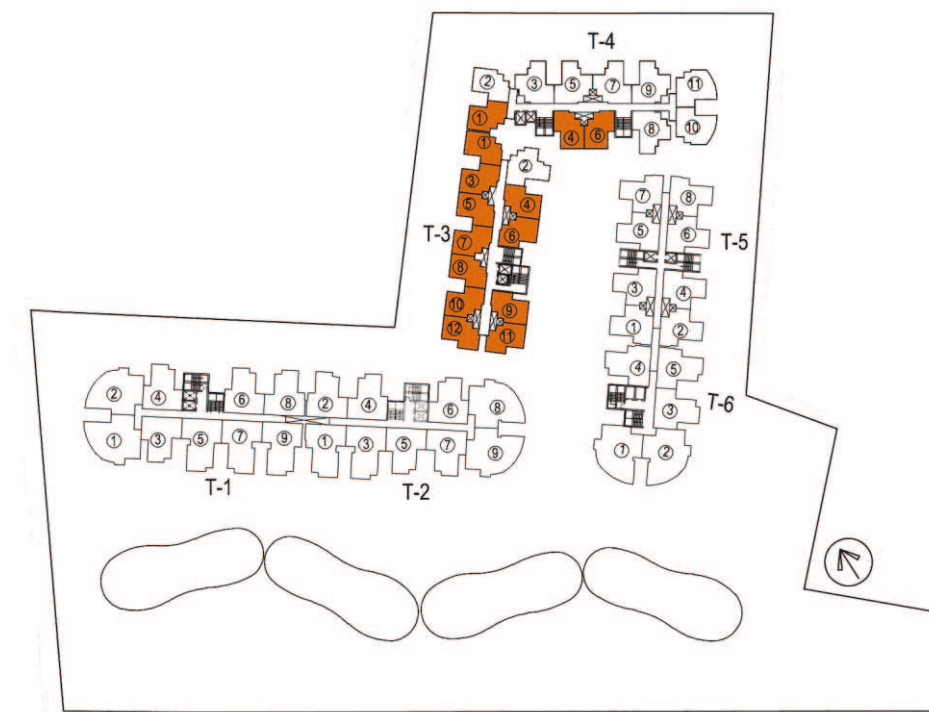
3D - VIEW



UNIT PLAN

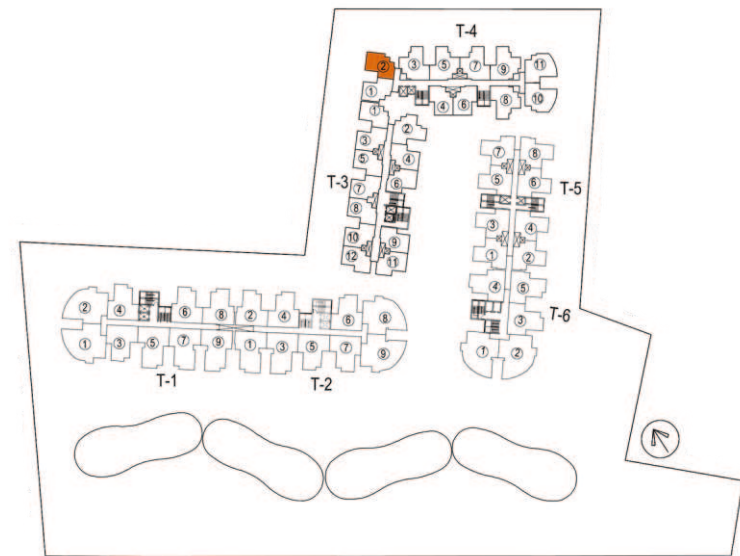


KEY PLAN



UNIT PLAN

1 Bedrooms + 1 Toilets (590 sq.ft.) (Type - 2)

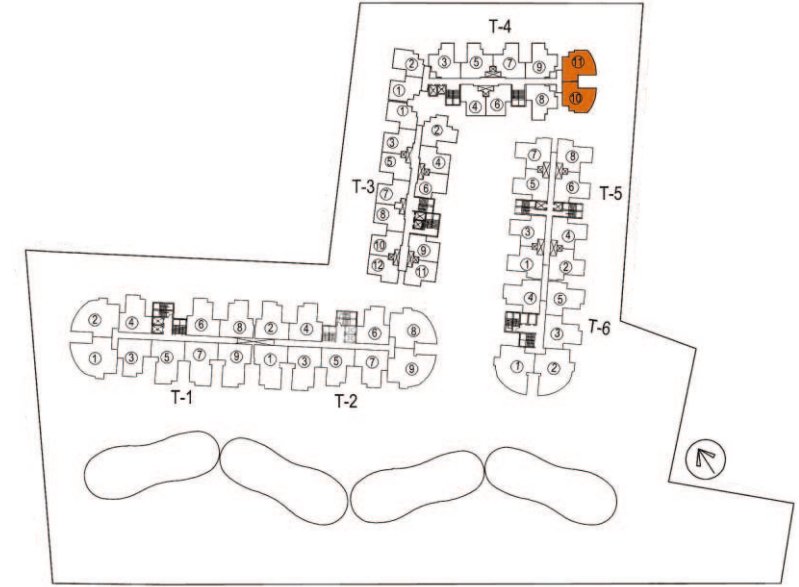
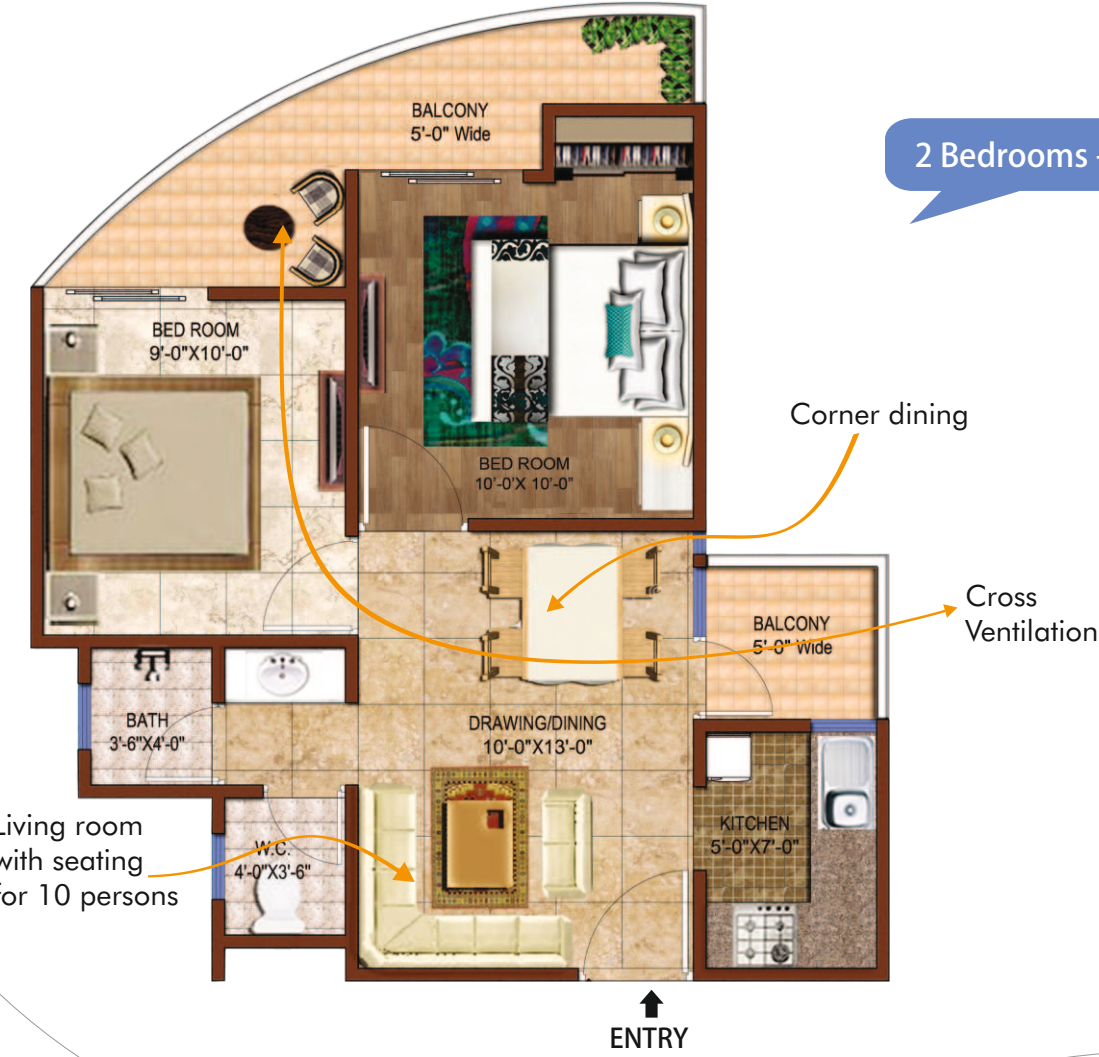


KEY PLAN



UNIT PLAN

2 Bedrooms + 1 Toilets (790 sq.ft.) (Type - 2)



KEY PLAN

2 Bedrooms + 1 Toilets (750 sq.ft.) (Type - 1)

3D - VIEW



Corner dining

Utility Area

Living room with seating for 6 persons

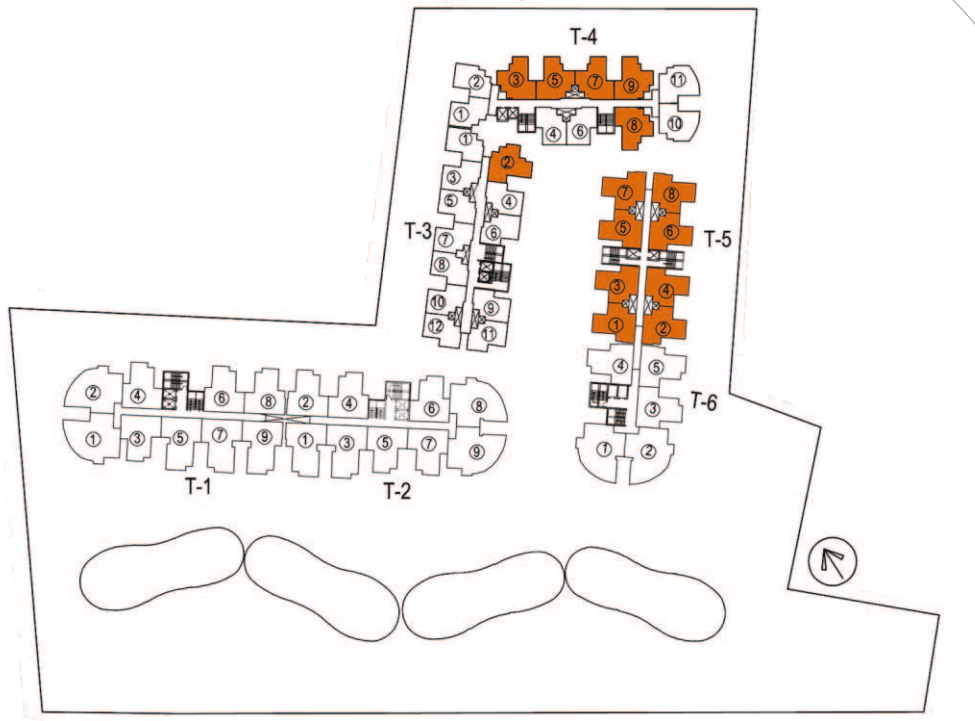


UNIT PLAN



ENTRY

KEY PLAN



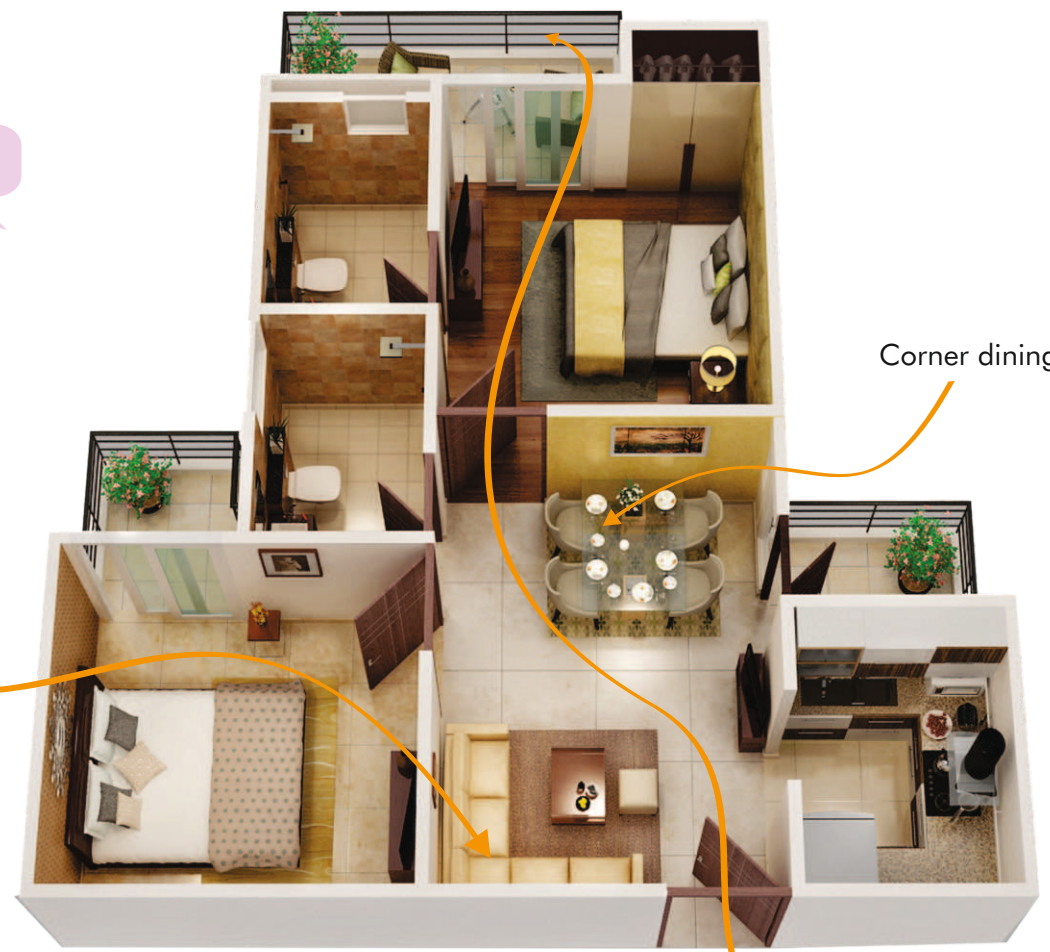
3D - VIEW

2 Bedrooms + 2 Toilets (890 sq.ft.)

Living room with seating for 6 persons

Corner dining

Cross Ventilation

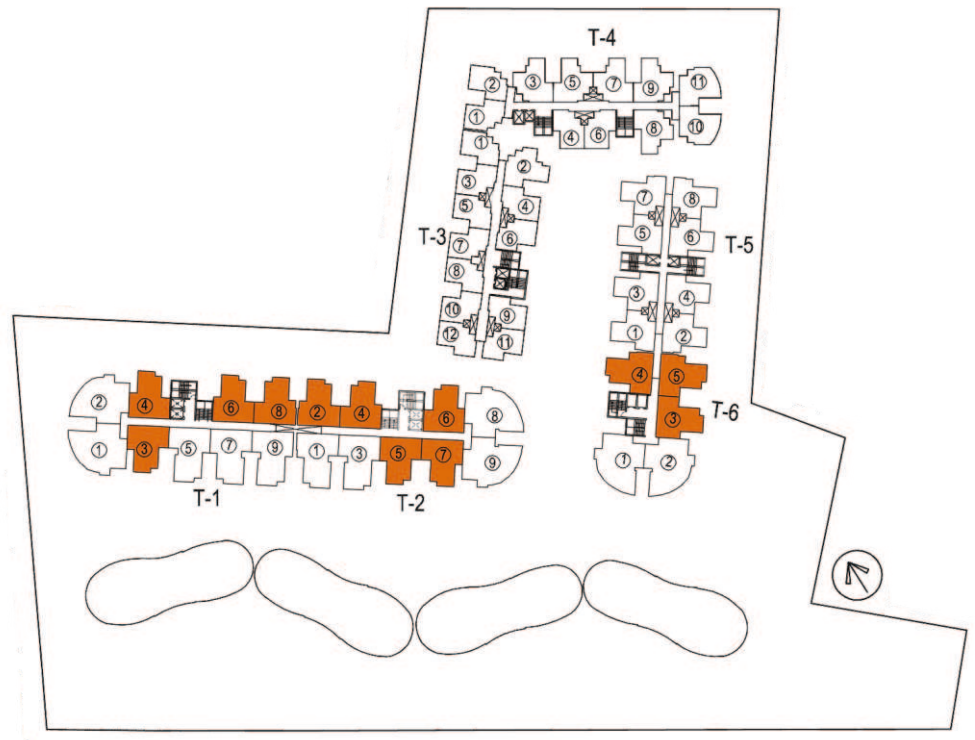


UNIT PLAN



ENTRY

KEY PLAN



3D - VIEW

2 Bedrooms + 2 Toilets + Study (1050 sq.ft.)

Living room with seating for 6 persons

Corner dining

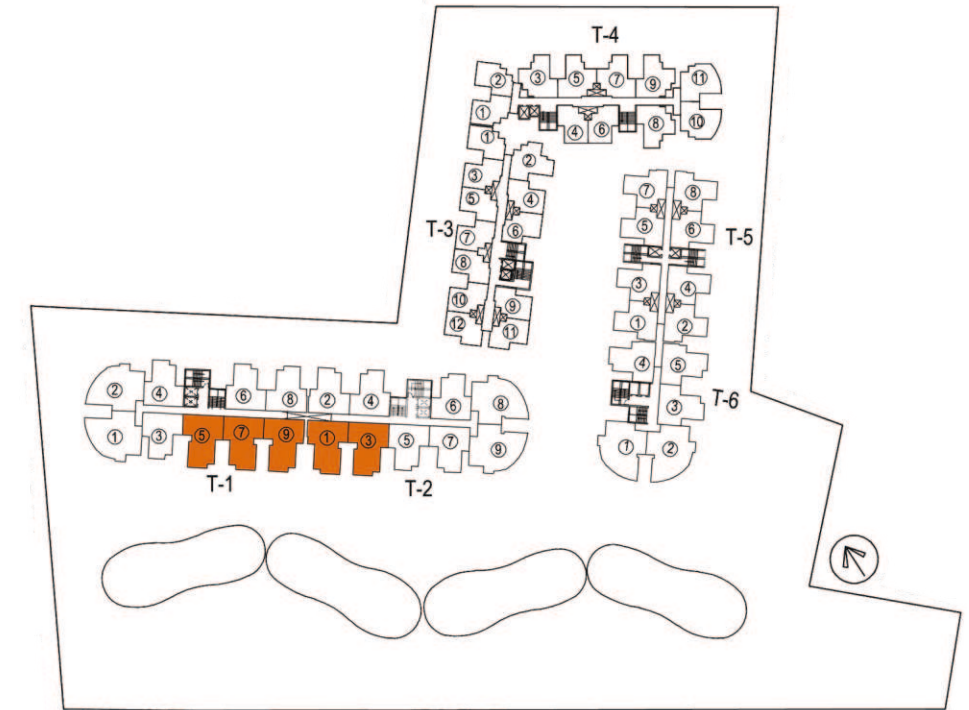
Utility Area



UNIT PLAN

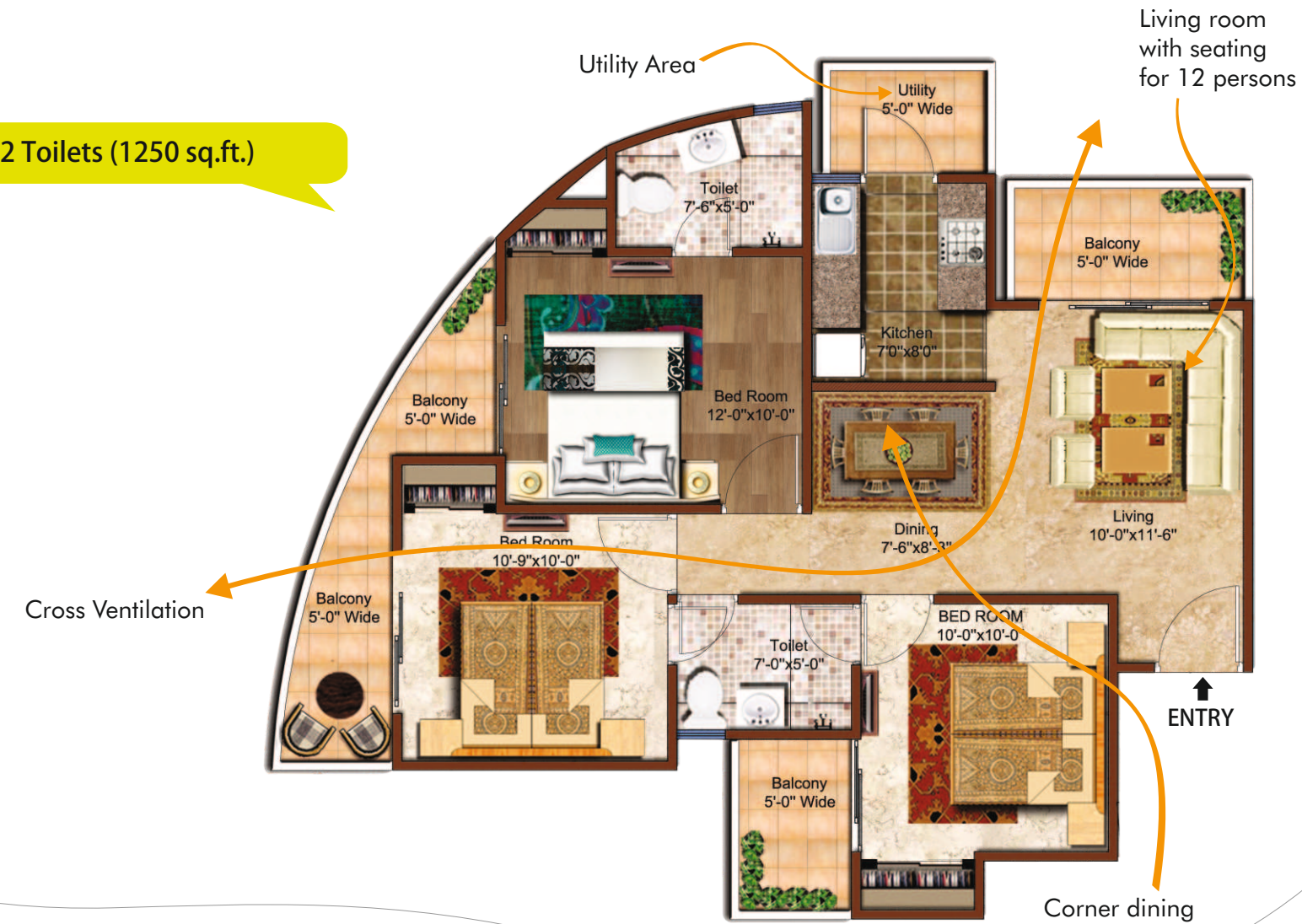


KEY PLAN



3 Bedrooms + 2 Toilets (1250 sq.ft.)

UNIT PLAN



KEY PLAN

