



GOPALAN  
**aqua**  
WHITEFIELD

GOPALAN  
**aqua**  
WHITEFIELD

Aqua is the new green

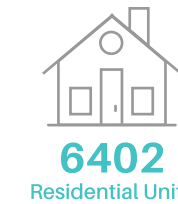


## About the Developer

Gopalan Enterprises, in the last three decades, has established itself as standard of quality and trust. The company's commitment to innovation, integrity, and customer's needs are reflected in its happy customers. With over 10 million square feet of constructed space, Gopalan Enterprises is a leader in its domain.

Gopalan Enterprises has diversified from its initial offering of Residential apartments to Malls, Commercial Spaces, Cinemas, Bowling Alleys, Education (Schools and Colleges), Skill Academies, Organic Farming, Coworks and now Aerospace and Hospitality.

Gopalan Enterprises has constructed more than 6400 residential units in Bangalore-including apartments and row houses. 34 completed projects and 4 under construction make the company one of the largest builders in Bangalore.





## Awards & Recognitions



Global Real Estate  
Brand Awards



CNBC Awaaz



Construction Times



International Brand Equity  
(Goa)



Quikr  
(Bangalore)



Asia One Awards  
(Singapore)



ETNow  
(Mumbai)

Searching for our dream home seemed to be an endless task. We had spent days to look for the perfect home and finally, we found Gopalan Aqua. With top hospitals in the vicinity, proper amenities, good client servicing, and hassle-free documentation, it felt like a dream come true. I am so glad to have found the perfect home for my family.

**Dr. Raman, Doctor**

Gopalan Aqua met all our expectations. Professional staff, amazing amenities that I have hardly seen anywhere else. Everything went very smoothly. I really like how they are doing their bit for water conservation. The brand has definitely kept up to its name. I would definitely recommend Gopalan Aqua to my friends.

**Usha Shetty, Bank Manager**

# CONSERVATION



**We made the right choices,  
so you don't need to choose.**



Water  
Conservation



Energy  
Conservation



Solid Waste  
Management



Solar Lighting  
(Common Areas)



Ample Wind  
Circulation



Roof Rainwater  
Harvesting



LED  
Lights



Sewage  
Treatment Plants

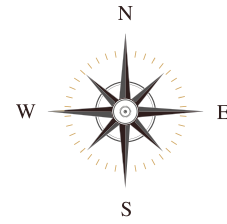


Recharge  
Pits

LIFE  
STYLE

GOPALAN  
**aqua**  
WHITEFIELD

With vast open spaces, stunning architecture, exclusive interiors, the Gopalan Aqua is undoubtedly a perfect mix of lush green landscapes along with a comfortable and stylish stay. Boasting of all the amenities that are required for a modern lifestyle, this stunning residential project is your ideal home that functions like a dream and simplifies your life.



### Master plan

- |                              |                    |
|------------------------------|--------------------|
| 1. Entry & Exit              | 7. Seater          |
| 2. Driveway to Basement Ramp | 8. Swimming Pool   |
| 3. Grand Entrance Lobby      | 9. Changing Room   |
| 4. Block - 01                | 10. Jogging Tracks |
| 5. Block - 02                | 11. Driveway       |
| 6. Kids Play Area            |                    |

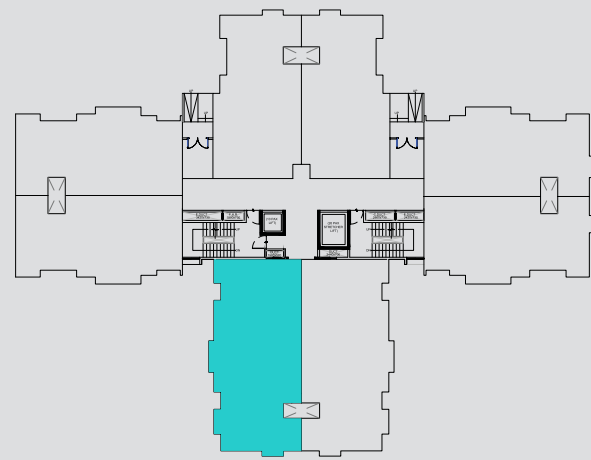
### Inside Club House

Hall | Gym | Aerobics | Yoga | Meditation | Kids Activity | Billiards | Indoor Games | Cards Room | Business Center | Departmental Store

RERA NO: PR/190327/002496



Block - A  
G+ 11 Floors



Typical floor key plan

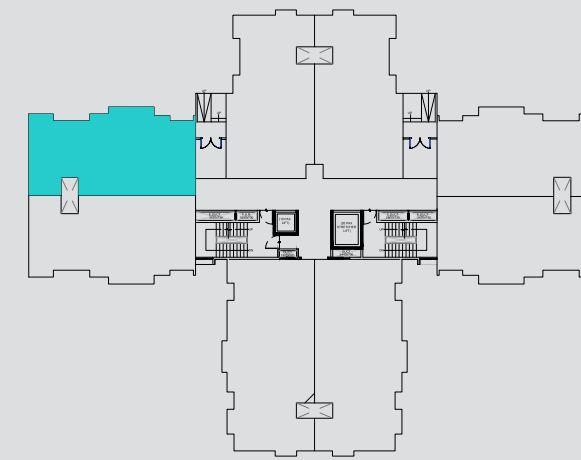


3 BHK	Area	C.A - 1170.sft	N ↑
		SBUA - 1561.sft	

Level 1 to 12

Disclaimer: 1. All dimensions are in metric, measured to wall finishes. 2. All materials, dimensions & drawings are approximate. 3. Information is subject to changes without notice, at developer's absolute discretion. 4. Actual area may vary from the stated area. 5. Drawings are not for scale. 6. All images used are for illustrative purpose only and do not represent the actual size, features, specifications, fittings, and furnishings. 7. The developer reserves the right to make revisions/ alterations at it's absolute discretion any liability whatsoever.

Block - A  
G+ 11 Floors



Typical floor key plan



2 BHK	Area	C.A - 930.sft	N ↑
		SBUA - 1271.sft	

Level 1 to 12

Disclaimer: 1. All dimensions are in metric, measured to wall finishes. 2. All materials, dimensions & drawings are approximate. 3. Information is subject to changes without notice, at developer's absolute discretion. 4. Actual area may vary from the stated area. 5. Drawings are not for scale. 6. All images used are for illustrative purpose only and do not represent the actual size, features, specifications, fittings, and furnishings. 7. The developer reserves the right to make revisions/ alterations at it's absolute discretion any liability whatsoever.



GOPALAN  
**aqua**  
WHITEFIELD

Designed for your comfort & convenience,  
the furniture and the décor reflect your  
personality and give you the perfect living  
room that you always wanted.



LIVING  
ROOM

# KITCHEN



GOPALAN  
**aqua**  
WHITEFIELD

Neutral color palettes, conveniently made for, these contemporary kitchens are designed with elegance that will never go out of style.

GOPALAN  
**aqua**  
WHITEFIELD

Luxurious, spacious, naturally-lit, the stunning lobby is your space to detach yourself from the chaotic world and achieve the state of euphoria.



LOBBY



Located in the arms of beautiful serenity, these impeccable apartments are waiting for you to begin your story. We at Gopalan Aqua, care about your needs and therefore make sure to offer you the comfort and the luxury that will make your lifestyle count.



## Club life @ Riviere

A well-equipped clubhouse designed to give you a heavenly experience worthy of your lifestyle. From a departmental store to a salon, a yoga room to a library, kids center, ballroom, and even a mini theatre for some entertainment, this clubhouse makes sure you don't have to step out into the traffic. Stroll, chat, get fit or simply unwind from all the chaos.





GOPALAN  
**aqua**  
WHITEFIELD

**Homes for a good mind, body, and soul.**

These homes of your aspirations awaits you.  
Designed with your preferences in mind, your convenience  
at your doorstep, your leisure a priority, your fitness our goal,  
Gopalan Aqua presents a home that delights you.

Football



Basketball



Gym



Billiards



Jogging Track



Lawn Tennis



Yoga Center



Table Tennis



Swimming Pool



Bowling



Kid's Play Area



Spa



Badminton



Mini Theater

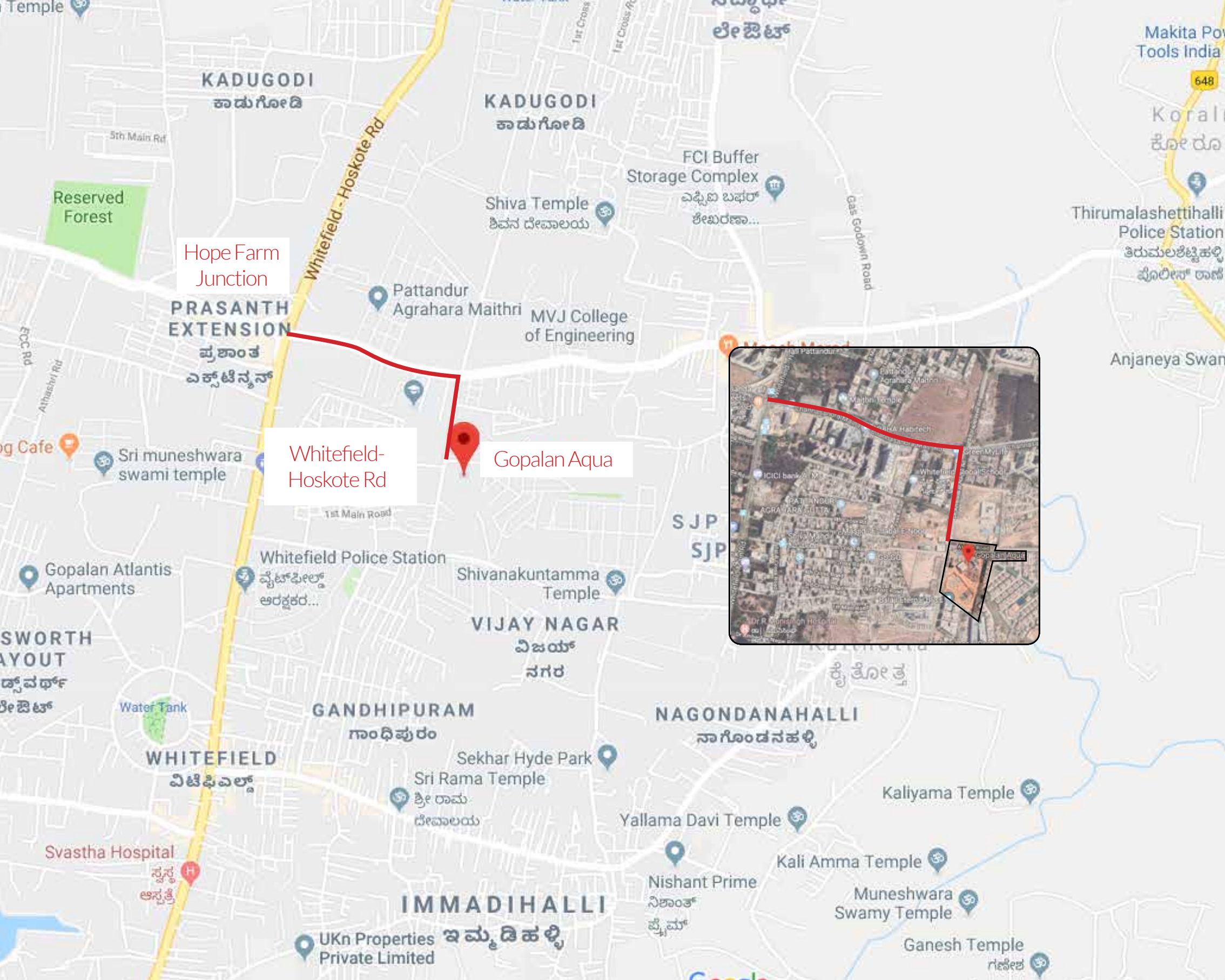


Library



Cricket





Hope Farm Junction

Whitefield-Hoskote Rd

Gopalan Aqua

# GOPALAN aqua

WHITEFIELD



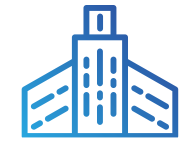
MVJ College of Engineering  
**2 MINS**



The Forum Neighbourhood Mall  
**7 MINS**



International Tech Park Bengaluru  
**11 MINS**



Columbia Asia Hospital  
**8 MINS**



Delhi Public School  
**9 MINS**





#### STRUCTURE

- 1 Basement + G + 14 Floors Shear wall structure, 2 Lifts per Block

#### CAR PARKING

- Covered car parks in basement level
- Visitors' car parks on ground level

#### FOYER/LIVING/DINING

- Superior quality vitrified tile flooring and skirting
- Premium emulsion/equivalent paint for walls and ceiling

#### BEDROOMS

- Superior quality timber laminated flooring/equivalent and skirting for Master Bedroom
- Superior quality vitrified tile flooring and skirting in other bedrooms
- Premium emulsion/equivalent paint for walls and ceiling

#### TOILETS

- Superior quality ceramic tile flooring
- Superior quality ceramic wall tiling up to ceiling

#### KITCHEN

- Superior quality ceramic tile flooring
- Superior quality ceramic tiling dado 2'-0" above platform
- Premium emulsion/equivalent for wall ceiling

#### BALCONIES/ UTILITIES

- Superior quality antiskid ceramic tile flooring and skirting
- Mild steel grill with handrail
- Premium emulsion/equivalent paint for ceiling
- All walls premium emulsion/equivalent paint

#### STUDY (WHEREVER APPLICABLE)

- Superior quality vitrified tile flooring and skirting
- Premium emulsion/equivalent paint for walls and ceiling

#### STAIRCASE

- Fire Exit Staircase
- Granite/equivalent for treads & risers
- Texture Paint for walls and premium emulsion/equivalent for ceiling
- Fire rated door for all staircases

#### COMMON AREAS

- Granite/equivalent flooring
- Superior quality ceramic tile cladding up to ceiling
- Premium emulsion/equivalent for ceiling
- Mild steel handrail

#### JOINERY

- Main door and bedroom doors of both sides masonite skin, with Timber frame & architraves
- Toilet door of timber frame and architraves. Shutter with Masonite skin on the external side and laminate on the internal side
- High quality ironmongery and fittings for all doors
- Heavy-duty aluminium windows made from specially designed and manufactured sections

#### LIFTS

- Total no. of 6 lifts of reputed brand with 2 lifts per block
- Capacity – 1 no's of 8- passengers & 1 no's of 14 to 16-passengers

#### LANDSCAPE

- Designer landscaping

#### COMMON FACILITIES

- Well-equipped clubhouse
- Swimming pool
- Children's play area

#### PLUMBING & SANITARY

- Sanitary fixtures of reputed make in all toilets
- Chromium plated fittings of reputed make in all toilets
- Stainless steel single bowl sink with drain board in utility
- Vanity counter in all toilets

#### ELECTRICAL SPECIFICATIONS

- BESCOM power supply of  
Single phase 3KW- 2BHK, Single phase 4KW- 3BHK
- Stand by power (Generator back up) 2BHK- 750 watts, 3BHK- 1 KW
- 100% stand by power for common facilities
- Provision for AC in all bedrooms
- Intercom facility provided from security cabin to each apartment

#### Specification Disclaimer:

The views shown are artist's impression only. The size, shape, and position of door, windows, columns, design of railings and various other elements are subject to change. The furniture, fixtures, including counter in kitchen, is shown to indicate the space available and likely position of electrical points are not a part of standard specifications. The finishes - flooring, tiles in toilet, kitchen, utility, balconies, etc., paint colour, door finish, colour, and any other finishes are only indicative and are subject to change. The dimensions and areas shown are from block to block, without considering any plaster & finish.

Gopalan Enterprises reserves the right to change specifications without prior notice, in the interests of quality and timely delivery. We request our valuable customers to note that any such changes made will not, in any way, be detrimental to the quality of the building.

SEZ



Shopping Malls



Hospitality



Schools

Organic Farm



Colleges



Sports Centre

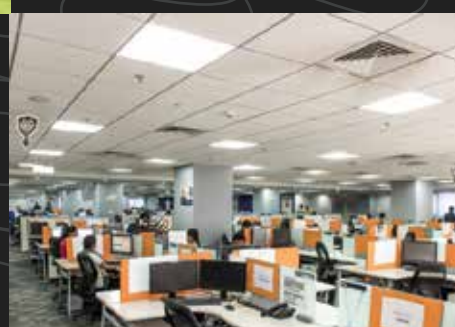
Coworks



Aerospace



IT Parks



Skill Academy



Cinemas



Tech Fabs



## The Team

### With the Highest Standards

As a dynamic and vibrant team of design and construction professionals, Gopalan Group brings an acute awareness of the importance of quality, safety, community and environment to every project.

Gopalan's track record over the past decade includes award-winning projects and successful delivery of quality residential, commercial and retail projects.

The highly qualified leadership team and its trusted allies in the architecture, planning and trade domains approach every project with the aim of creating a place where those who live and work in can take pride in.

Gopalan listens to the market and its clients and operates with an openness and transparency that ensures a sense of cooperation and mutual focus on the desired outcome.

Through meticulous project planning and scheduling Gopalan ensures that the quality of workmanship is impeccable and that the end result is one that enriches the urban environment and has lasting value.







#5/1, Gopalan Enterprises, Richmond Road, Bengaluru 560025, Ph. No: 080 4931 4931  
E-mail: [sales@gopalanenterprises.com](mailto:sales@gopalanenterprises.com), Website: [www.gopalanenterprises.com](http://www.gopalanenterprises.com)