



SAIVEN  
MULBERRY GROVES



*Welcome to Mulberry Life*

“THE QUALITY OF YOUR LIFE DEPENDS ON HOW WELL YOU MANAGE YOUR BODY, YOUR MIND,  
YOUR EMOTION, YOUR SITUATIONS, YOUR HOME, YOUR COMMUNITIES, NATIONS,  
YOUR LIFE IN GENERAL AND THE WORLD.”

- SADHGURU





## Creating Architectural Marvels since 2010

For the privileged 75 Families we have curated the best material from the world over. From the stables of a world class Architect with an international reputation, moving from Neo-Classical Architecture we have designed a Modern Contemporary Villa keeping in mind the same philosophy of Saiven Group.

We have handpicked Marble from Italy, Stone Paved Driveways, Stacked Stone from Rajasthan, Unfired Clay Cladding from Vietnam, Fluted Panels from Poland, Aluminium Fins for Grit and Wooden Laminated UPVC for Glamour.

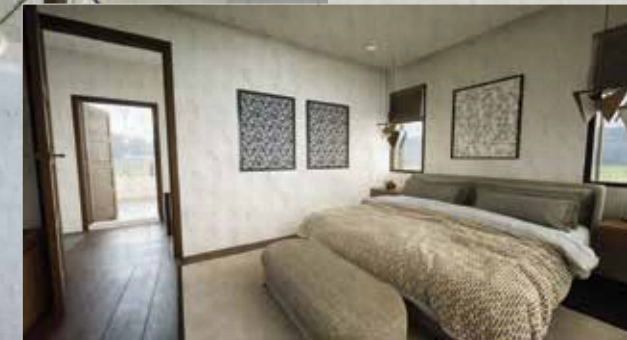




## Modern Contemporary Architecture with Curated Gardens

A 4 Bedroom Villa - housing a home theatre, private garden, terrace garden, home office and provision for 2 covered car parks to cater to all your family members. Stone Paved Driveways bringing you home, this is not a villa you own but a Lifestyle Statement you will make.





## Bespoke Interiors to Celebrate Life.

Luxury is when it seems flawless, when you reach the right balance between all elements.

Understated theatricality – that is our understanding of what luxury is all about.

# MATERIAL BOARD



LAMINATED UPVC  
DARK WALNUT



BLACK STACKED  
STONE CLADDING



UNFIRED CLAY  
CLADDING



GREY COLOUR  
TEXTURED PAINT



FLUTED PANEL  
WALNUT OAK



WALNUT OAK  
TEXTURED PAINT



CYLINDRICAL  
CEILING LIGHTS



GRANITE STONE PAVED ROADS



ITALIAN MARBLE/  
WOODEN FLOORING



MS SPRIAL STAIRCASE



ALUMINIUM FINIS







M  
U  
L  
B  
E  
R  
R  
Y  
  
G  
R  
O  
V  
E  
S



- RECEPTION
- BANQUET LOUNGE
- THE GYM
- INDOOR GAMES
- POOL/ BILLIARDS
- TABLE TENNIS
- MINI THEATRE
- LIBRARY WITH AN OUTDOOR SIT-OUT
- SWIMMING POOL WITH DECK
- HEALTHCLUB - STEAM, SAUNA, MASSAGE ROOM AND JACUZZI
- KOI POND
- VOLLEYBALL COURT
- CHILDREN PLAY AREA
- OUTDOOR GYM
- PICKLE BALL COURT
- BASKETBALL COURT
- BBQ PIT
- CURATED GARDENS ALL OVER THE PROPERTY
- POD STATION - OUTDOOR OFFICE SPACE
- VISITOR CAR PARKING
- SCHOOL BUS STAND
- E-VEHICLE CHARGING STATION



## Sustainable Living



We at Saiven Developers make a conscious effort in contributing back to nature and leaving the world a better place than we found it. At Saiven Mulberry Groves we have adopted a zero waste system and smart water management for sustainable living.

At Saiven Mulberry Groves we have ensured zero waste management that treats human and organic – waste and recycles this waste to organic compost. The Japanese STP system adopted at Saiven Mulberry Groves is cutting edge and ensures a low carbon footprint.

Saiven Mulberry Groves is going to be an evergreen commune with an ecosystem developed keeping in mind our future generations. The smart water management keeps in mind the monsoons and maintains a water table that will endure the entire community at Saiven Mulberry Groves. The water treatment helps water management and ensures water is not wasted but recycled for maintaining green cover.





KEY PLAN



# SAIVEN MULBERRY GROVES

PRM/KA/RERA/1251/308/PR/300523/005962

## MASTERPLAN

1. ENTRANCE
2. VOLLEYBALL COURT
3. KIDS PLAY AREA
4. OUTDOOR GYM
5. BUS BAY
6. BASKET BALL COURT
7. PICKLE BALL COURT
8. PARK
9. CLUB HOUSE
10. PARK
11. POD STATION
12. BBQ AREA
13. SERVICE YARD

# Specifications

## **STRUCTURE**

RCC framed structure with Solid Block Masonry for External and Internal Walls.

## **FLOORING**

Imported marble for Living & Dining Area. Wooden laminate flooring for all Bedrooms and Family Room. Ceramic tiles for Kitchen, Utility and Bathroom.

## **INTERNAL STAIRCASE**

Imported Marble for Treads and Risers with MS Handrail.

## **MAIN DOOR**

Teak Veneered Door frame with Teak Veneered Panel Door. Good quality CP hardware fixtures and branded door locks.

## **ALL OTHER DOORS**

Ply Wood Architrave with Polished Veneer with Moulder Shutters/ Veneered Flush Doors.  
Good Quality CP Hardware Fixtures

## **WINDOWS**

Two track Laminated UPVC Windows.

## **SANITARY FITTINGS**

Jaquor CP & Hindware Sanitary or equivalent make.

## **PAINTING**

Internal walls: Two coats of putty would be applied over one coat of primer followed by two coats of Asian paints or equivalent brand emulsion paint with roller finish.

External walls: One coat primer of Asian brand water proof exterior paint followed by two coats of Asian brand or equivalent brand water proof exterior paint. Texture paint wherever applicable.

## **ELECTRICAL WORKS**

ISI brands like Finolex/Anchor or equivalent fire resisting wires for lighting and heating circuits with ISI branded PVC conduits. Modular switches of Anchor Roma or equivalent brand will be provided. E-Vehicle charging point at car parking.

## Completed Projects

### About Us

For more than a decade, the SAIVEN family has been in the real-estate arena understanding value creation beyond our client's expectations. It is our dedication to design excellence and a steadfast focus on quality that are the pillars of our organization. Our design features are inspired by a tradition of innovative leadership. The resources from award winning teams, our architects, interior designers, project managers and specialists work in flexible teams that are customized specifically for each project we undertake. Saiven Developers focus on conceptualizing and executing distinctive projects, keeping in mind all the basic elements of design, space, aesthetics, vastu and most importantly value for money. One such distinct feature is our creation of world class theme-based architectural projects that turn dreams into a reality.



Stroll into Marble Arch for a glimpse of the English way of life.  
Sarjapur Road, Bangalore.



46 State Of The Art Roman Style Row Houses.  
Sarjapur Road, Bangalore.



Resort Living Of 44 Premium villas spread over 2 acres of pure indulgence.  
Sarjapur Road, Bangalore.



Affordable Luxury Apartments  
Dommasandra Circle  
Sarjapur Road, Bangalore.



Affordable Luxury Apartments  
Dommasandra Circle  
Sarjapur Road, Bangalore.



Ideal home for peace lovers of old Bangalore.  
HSR layout, Bangalore.







Office Address:

Saiven Developers & Constructions Pvt Ltd,

#1664, 2nd Floor, 27th main, 2nd Sector, HSR Layout, Bangalore - 560102

Phone: +91-888-444-4560 email: [info@saivendevelopers.com](mailto:info@saivendevelopers.com) website: [www.saivendevelopers.com](http://www.saivendevelopers.com)