

A PROJECT BY



JVM SPACES
a mehta group venture



— JVM'S —
MONICA
— GARDENS —
MONUMENT TO LUXURY

THE NEXT
LEAGUE OF
LUXURY



JVM'S
MONICA
GARDENS
MONUMENT TO LUXURY

Located in the heart of Mulund-East
Modern 3 Podium + 17 Floors Tower
3 BHKs vastu compliant homes

- CROSS VENTILATED FLATS
- PODIUM PARKING WITH RAMP ACCESS
- 1.20 METER WIDE DECK
- MAXIMUM SURFACE PARKING
- PREMIUM 3 BHK DECK RESIDENCES
- 3.2 METER FLOOR TO FLOOR HEIGHT
- INTRODUCING CAPSULE LIFT
- EXCLUSIVE TERRACE GARDEN
- CONVENIENT SHOPPING COMPLEX
- LAVISHLY DESIGNED LOBBY
- WELL EQUIPPED MODERN GYM

**A COMPLETE ADDRESS
FOR COMPLETE HAPPINESS**

MORE SPACE.
MORE JOY.

JVM'S
MONICA
GARDENS
MONUMENT TO LUXURY

TERRACE
FLOOR
AMENITIES

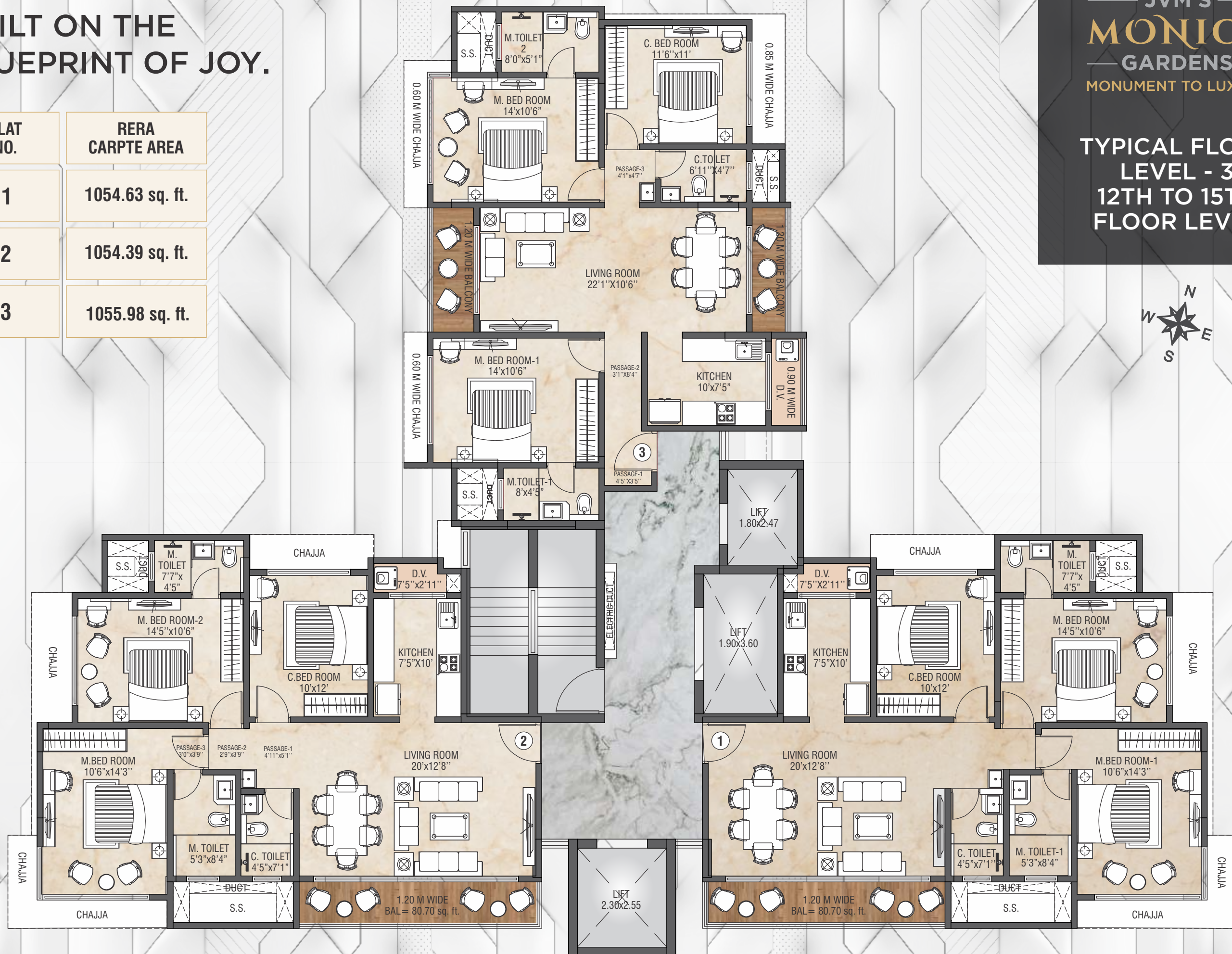


**BUILT ON THE
BLUEPRINT OF JOY.**

FLAT NO.	RERA CARPTE AREA
1	1054.63 sq. ft.
2	1054.39 sq. ft.
3	1055.98 sq. ft.

**JVM'S
MONICA
GARDENS**
MONUMENT TO LUXURY

**TYPICAL FLOOR
LEVEL - 3
12TH TO 15TH
FLOOR LEVEL**



An aesthetically pleasing lifestyle...

...for individuals with a keen eye for details.



THE DELIGHT IS IN THE DETAILS

LIVING ROOM

- Main Door - 45 mm thick fire resistant flush door, Both side laminated.
- Aluminum anodizing sliding window.
- Gypsum finished wall.
- Concealed branded electrical copper wiring.

BEDROOM

- Bedroom 35mm thick laminate door.
- Vitrified tiles flooring.
- Concealed branded electrical copper wiring.
- Gypsum finished wall.
- Branded switches and MCB.
- Aluminum anodizing sliding window.

KITCHEN

- Granite kitchen platform with stainless steel sink.
- Vitrified tiles flooring.
- Aluminum anodizing sliding window.
- Concealed branded electrical copper wiring.
- Branded switches and MCB.
- Walls tiles dodo kitchen.

BATHROOM

- 30mm thick doors.
- Premium quality plumbing fittings and sanitary ware.
- Concealed branded electrical copper wiring.
- Anti skid flooring tiles.
- Branded switches and MCB.

COMMON AREAS, AMENITIES AND FACILITIES

- Designer Entrance Lobby.
- Gymnasium.
- Terrace Amenities.
- High Speed Elevators.
- DG Backup For Common Areas And Elevators.
- Smart Security With CCTV & Intercom.
- Water Proof and Weather Proof Texture Paint on External Walls.
- Fire Resistant Door For Staircases.
- LED Lights In Common Areas.
- Earthquake Resistance Structure.



JVM'S MONICA GARDENS
MONUMENT TO LUXURY

DELIGHTFULLY LOCATED.





JVM SPACES

a mehta group venture

**Corporate Office: 1104, 11th Floor, Dev Corpora,
Cadbury Junction, Eastern Express Highway,
Opp. Korum Mall, Thane-West. T: +91- 022 - 2543 4440 / 1 / 2
E: info@jvmspaces.com | W: www.jvmspaces.com**

**Site Address: JVM's Monica Gardens,
Vidyalaya Road, Near Raje Sambhaji Maharaj Ground,
Opp. Dr. Yashvantrao Dode World School,
Mulund (E), Mumbai - 400081**

BOOKING CONTACT: +91 97572 46997

LAISONING ARCHITECT
SHRI SWAPNIL SONAWANE



PROJECT DESIGN ARCHITECT
**VELOCITY URBAN
PLANNERS**

ELEVATION DESIGN ARCHITECT



STRUCTURAL CONSULTANT
MR. ZUZAR AHMEDALI TINWALA OF CSE

SITE SUPERVISOR
MR. YUNUS KHAN | LICENCE NO. 840011819



RERA REGISTRATION NO
P51800052364

Available at website: <http://maharera.mahaonline.gov.in>



Note: All plans, drawings, facilities etc are subject to the approval of respective authorities and would be changed if necessary. The discretion remains with the developer, all rendering, floor plans, pictures, maps are the artist's conception and not actual depictions of building, its wall, roadways or landscaping. The developer does not warrant or any legal liability or responsibility for the accuracy, completeness, or usefulness of any information disclosed.