

# THRIVE IN GROWTH



**SHOPS STARTS FROM 800 SQ.FT.**



## **SOUTH RAYZ**

— FLOW RIGHT. LIVE RIGHT —

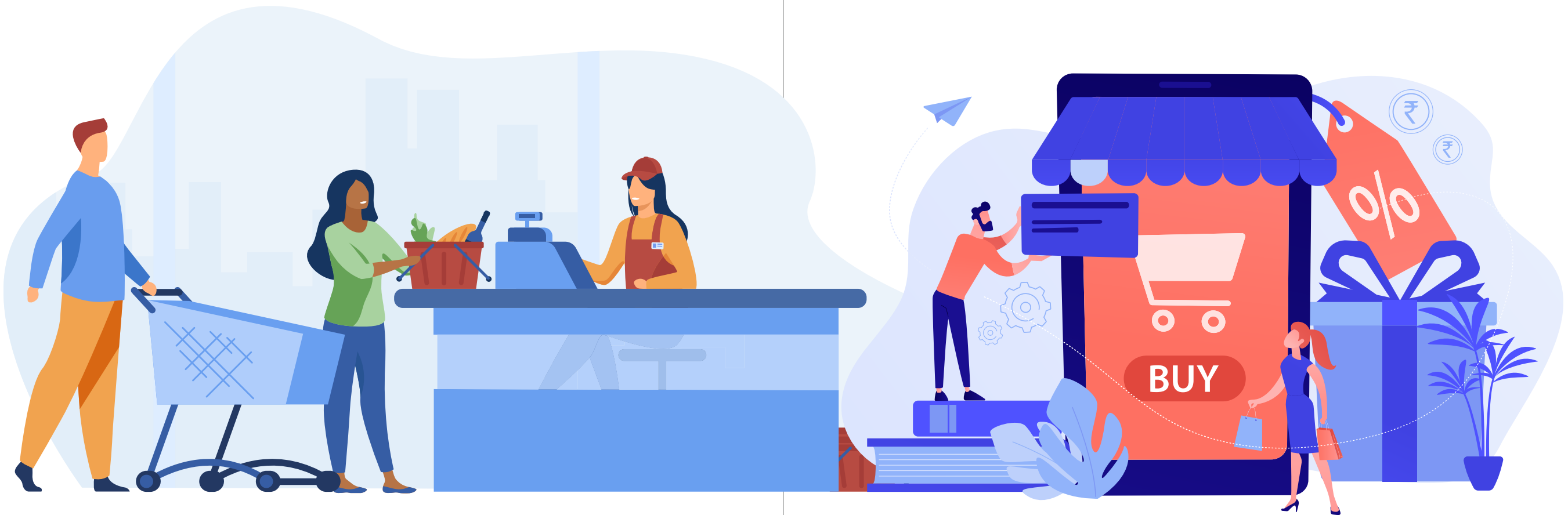
**2 & 3 BHK Homes & Retail**  
B/S Gala Laxuria, South Bopal

## GROW LUXURIANTLY

Sun Southrayz is a mixed development project comprising of Residential & Retail units right in Heart of Sobo. Ideal choice for medical facilities, food outlets, fitness centers & educational institutes.

## ENCAPSULATING MULTIPLE BUSINESSES

Strategically located in a flourishing neighborhood **SURROUNDED BY MORE THAN 3000 HOMES** Sun Southrayz offers great opportunity for Retail Businesses.



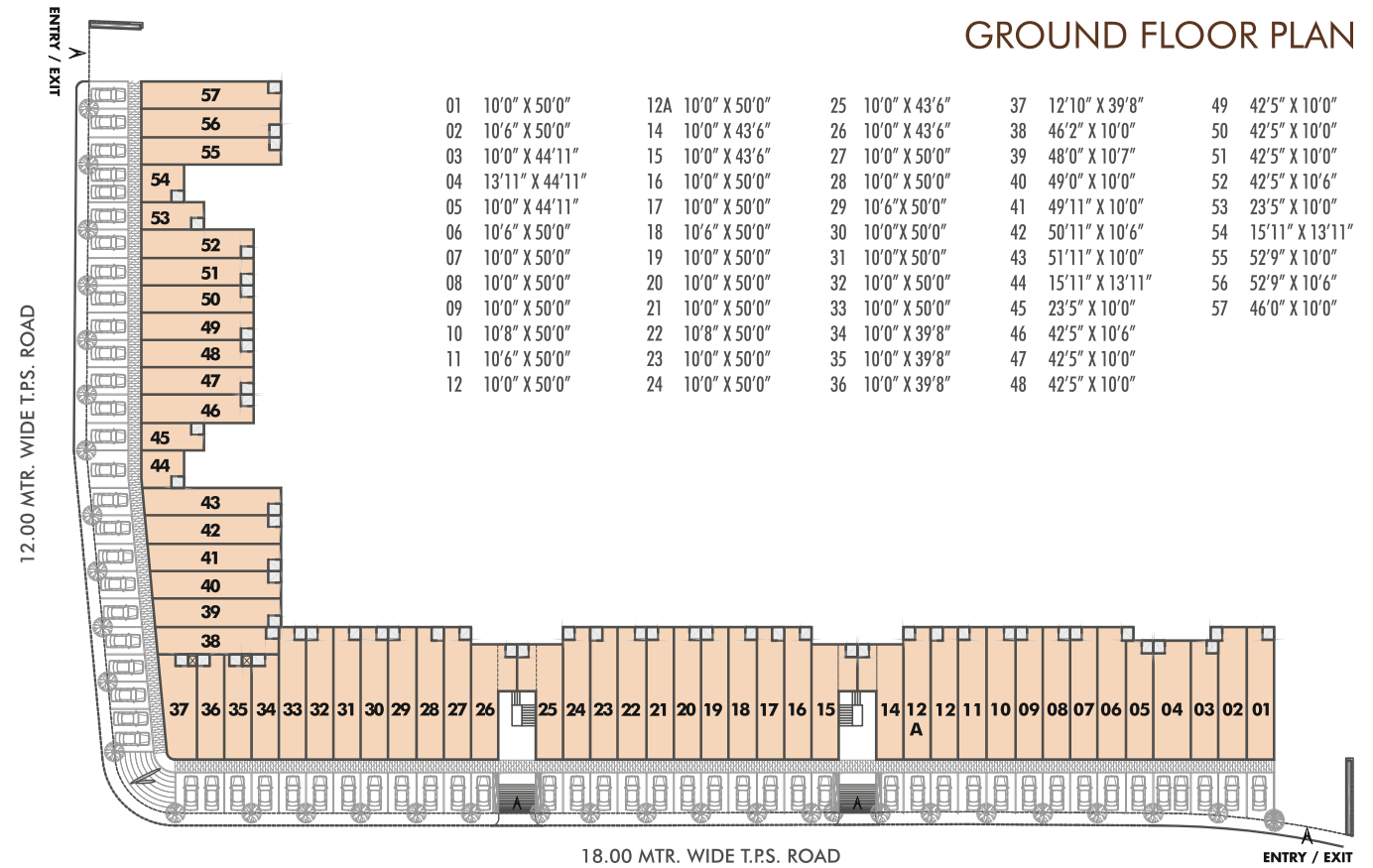




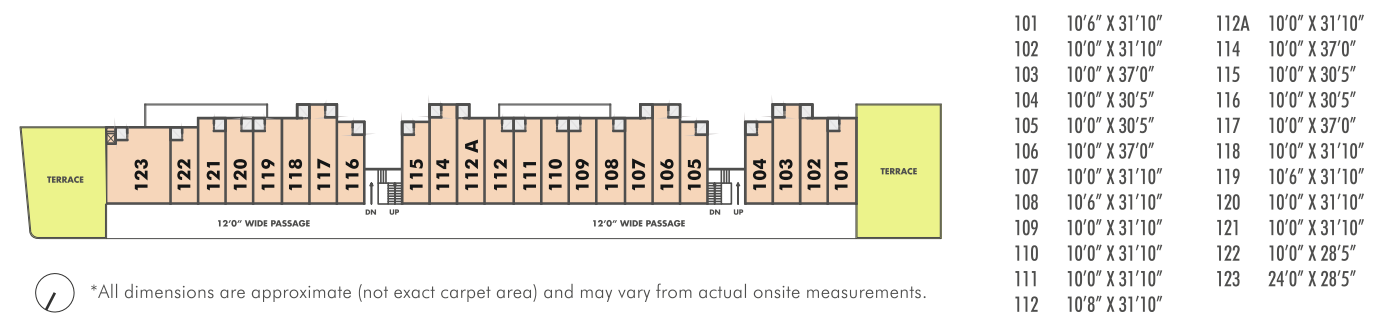
RIGHTLY PRICED  
G+1<sup>ST</sup> SMALL TO MEDIUM SIZE RETAIL

YOU NAME IT.  
WE GOT IT.

### GROUND FLOOR PLAN



### FIRST FLOOR PLAN



\*All dimensions are approximate (not exact carpet area) and may vary from actual onsite measurements.



## BUILDING ATTRIBUTES

- Ground + 1<sup>st</sup> Retail Units
- Strategically Located On Two Road Junction (18 M. & 12 M.)
- All Unit Having Maximum Visibility & Road Frontage
- Ample Parking Facility On Ground Floor.
- Fire Safety Features
- Power Backup For All Required Utilities
- Well Crafted Frontal Promenade
- Separate Utility / Services Planning For Retail Complex

## UNIT ATTRIBUTES

- Glazing Work On Front Facade Of All Units
- Vitrified Tiles Flooring
- Adequate Power Load For Each Unit
- Individual Restrooms Within Units With Ceramic Tiles & Jaguar Fittings
- Convenient Location For AC Outdoor Units
- Adequate Signage Space For Brand Visibility



## ANYTHING BUT TYPICAL



### Disclaimer

- The brochure is for the easy presentation of the project. It should not be considered as a part of the legal documents. For further information regarding the project the member/customer is requested to check the details on RERA website or at the developer's office before going ahead with the booking.
- The furniture and fixtures, electrical appliances and other loose items shown in the brochure are only for illustrative purposes and do not form a part of the standard product on sale. The furniture layout shown in the brochure is suggestive and subject to change as per site conditions and as per the instructions of the project architect.
- The Promotor / Developer reserves the right to make changes in the project, its amenities and specifications as may be suggested by the project architect or the structure consultant and any such changes made shall be binding on the customers/members of the project.
- The Promotor / Developer reserves the right to make minor onsite changes during the course of construction and such changes shall be binding on all the members/customers of the project.
- The dimensions shown in the brochure are approximate and calculated from unfinished surfaces and are rounded off to nearest whole number. The carpet area mentioned is calculated as per the provisions of the RERA Act with the help of AUTO CAD software.
- The images (Interior and exterior views) in the brochure are computer stimulated graphics for representational purpose and are subject to errors and omissions. The images used may be stock images or images based on architectural plans of the project. They shall not be constructed as actual depictions of the project.
- The north direction shown in the brochure is approximate and can be erroneous. The member/customer is expected to verify the same personally before going ahead with the booking.
- The key plan in the brochure is not to scale and does not depict the exact location of the project or the connecting road network or other abutting structures or landmarks. It is only for representation purpose and give a rough idea about the approximate location of the project. The members/customers is requested to visit the project site and check the physical location of the project and its surroundings before going ahead with the booking.



ASSOCIATE PARTNER



## SUN BUILDERS GROUP

Corporate Office

Sindhu Bhavan Road, Bodakdev,

Ahmedabad - 380 059, Gujarat, India.

+91 99789 32054, (IVR) +91 81288 28888

E: [sales@sunbuilders.in](mailto:sales@sunbuilders.in)

Site Address: Sun SouthRayz, Besides Gala Luxuria, South Bopal.

RERA NO. : PR/GJ/AHMEDABAD/AHMEDABAD CITY/AUDA/MAA06740/050220, [www.gujrera.gujarat.gov.in](http://www.gujrera.gujarat.gov.in)