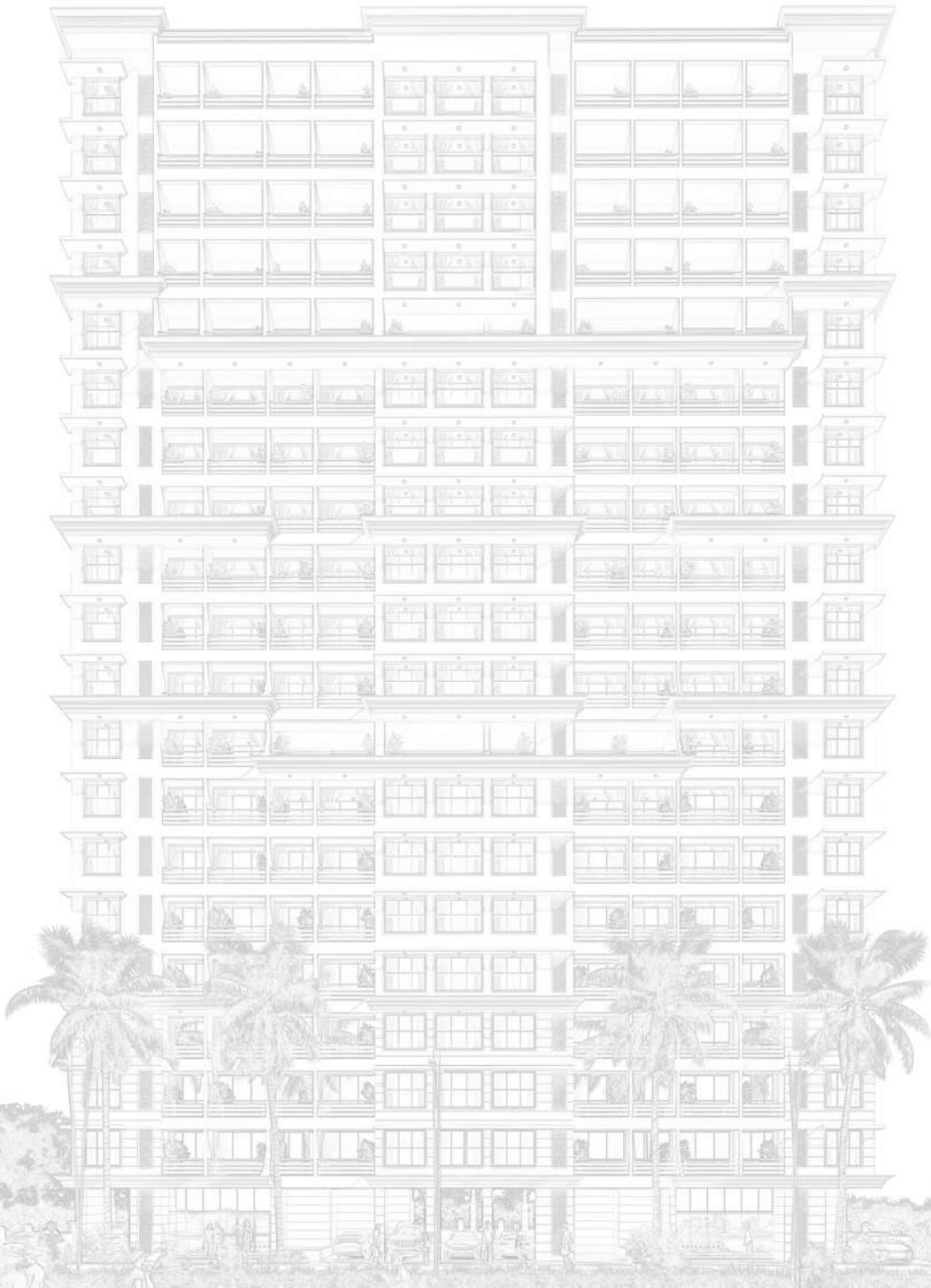




RATNADEEP HEIGHTS

1&2 BHK PREMIUM LIVING





KRV REALTY with commitment as our base and excellence as strength, plenty of imagination, perfectly blended in Entrepreneurial expertise; today, we stand among the most respected names in the property development business city area of Kurla, Mumbai. Enjoying goodwill that Has been built on trust, transparency and tenacity – brick by brick, Project after project, year after year since our inception.

In providing an exceptional new development, A RENOWNED BUILDER WITH IDENTITY **KRV Realty** is creating as new place to live. A breath taking modern home in the exciting, vibrant and prosperous city



GOOD PLANNING LEADS
TO GOOD DESIGN



GOOD DESIGN LEADS
TO GOOD EXECUTION



GOOD EXECUTION LEADS
TO GOOD CREATION



RATNADEEP HEIGHTS

BY KRV REALTY



Very rarely comes a residential cum commercial project that has all the elements you aspire for in a home. Ratndeeep heighs has smart architectural design, abundant space, beautiful greenery, lifestyle amenities and much more.

THIS IS HOW A SPIRITUAL LIVING LOOKS LIKE

WONDERFUL

THESE 1 & 2 BHK
RESIDENCE HAS
EVERYTHING THAT YOU
WISHED FOR IN A DREAM
HOME.



SOULFUL

THE GREEN
LANDSCAPE LETS
YOU EMBRACE
THE SERENE
SHADES OF NATURE.



ELITE GYM
WITH MODERN
LIFESTYLE AMENITIES
MAKE LIVING HERE
A DELIGHTFUL AFFAIR.

JOYFUL

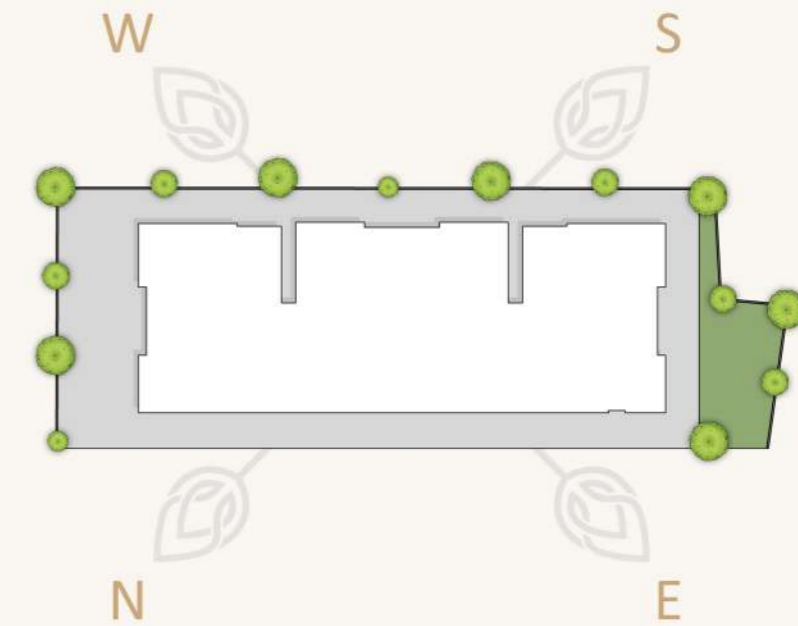


A WELL CONNECTED
LOCATION THAT PUTS
YOU IN THE CENTER OF
EVERYTHING YOU NEED
AND DESIRE.

THOUGFUL

INTELLIGENT DESIGN

PLANNED WITH EXCELLENCE



Natural ventilation south to north

This brilliantly designed project merges residences, commercial spaces and open green landscapes beautiful. There's enough space the towers and the direction is as per vastu.

WONDERFUL



At RATNADEEP. get used to more; More luxuries; More air and light; More greenery; More amenities; This thoughtfully planned project offers you more of everything than you expect.





SOULFUL

Here, Nature Is An Integral Part Of Your Life

At RATNADEEP, we have exquisitely combined nature into your day to day living. Wherever you look tranquil greenery prevails. It's your peaceful nirvana amidst the chaos of the city.





JOYFUL

The Fabulous GYM & Yoga house

Why go outside when you can enjoy plethora of lifestyle amenities here. The marvellous club house bestows you with so many recreation possibilities that living here becomes a delightful experience.





GROUND FLOOR PLAN

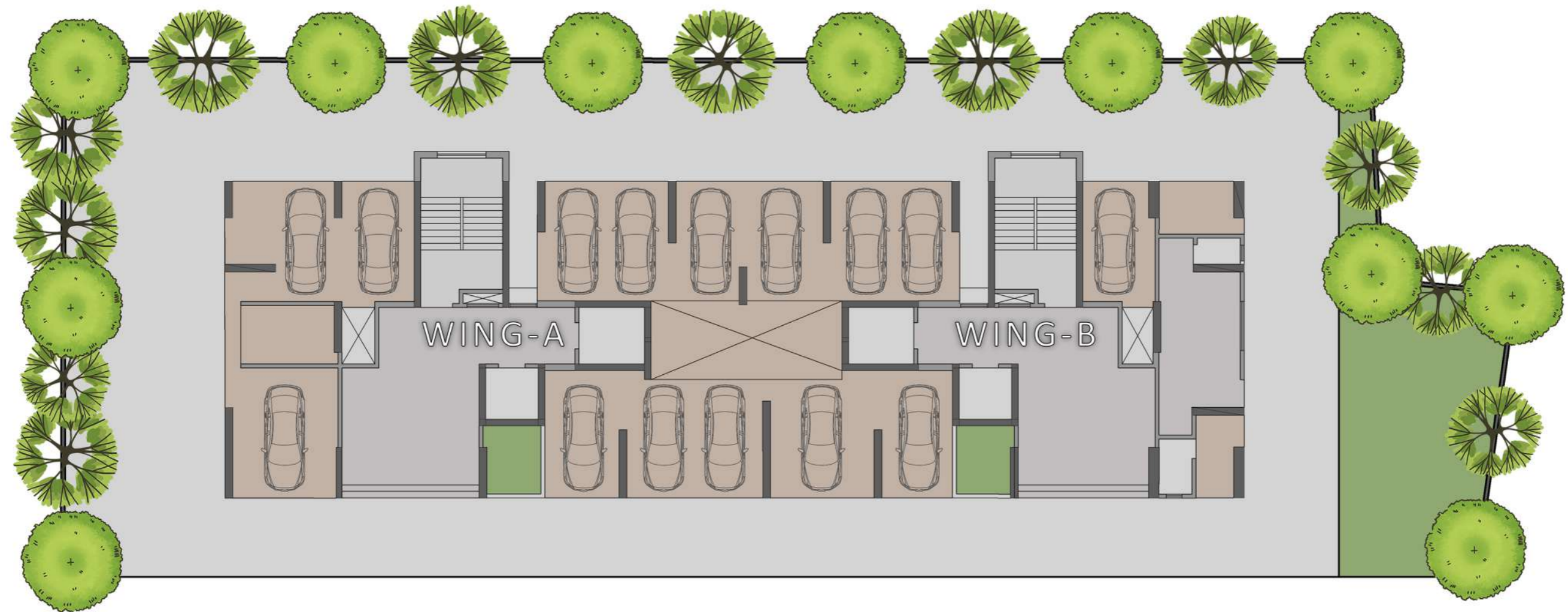


N



LEGEND

- | | |
|--------------------|---------------------|
| 01 ENTRANCE GATE | 07 RECEPTION |
| 02 SECURITY CABIN | 08 RESI-METER SPACE |
| 03 DROP OFF ZONE | 09 COM-METER SPACE |
| 04 LEISURE SEATING | 10 PARKING |
| 05 WAITING AREA | 11 SOCIETY OFFICE |
| 06 FOYER | 12 PUMP ROOM |





TYPICAL FLOOR PLAN



N



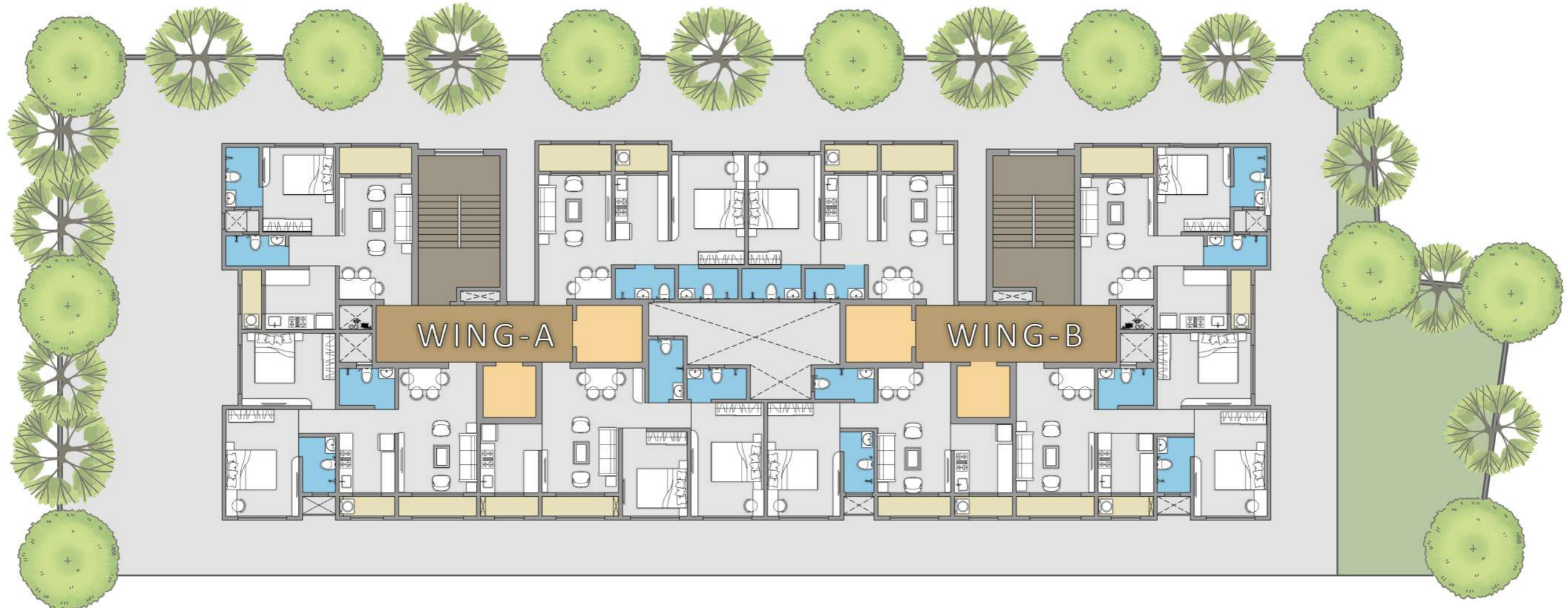
LEGEND

WING "A"

SR.NO.	TYPE	RERA AREA
1	1 BHK	481 Sq.ft
2	2 BHK	600 Sq.ft
3	2 BHK	600 Sq.ft
4	1 BHK	458 Sq.ft

WING "B"

SR.NO.	TYPE	RERA AREA
1	1 BHK	458 Sq.ft
2	2 BHK	600 Sq.ft
3	1 BHK	470 Sq.ft
4	1 BHK	487 Sq.ft



1 BHK UNIT PLAN

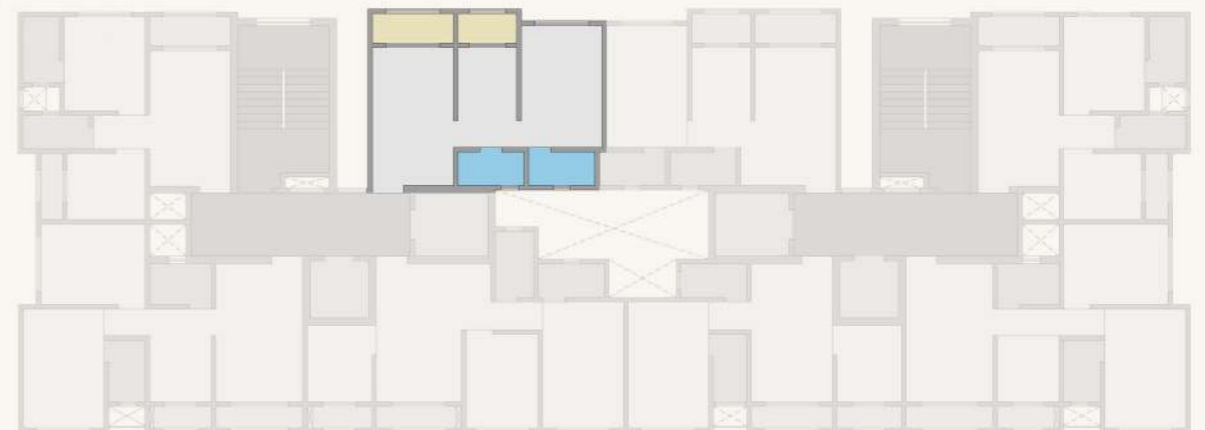
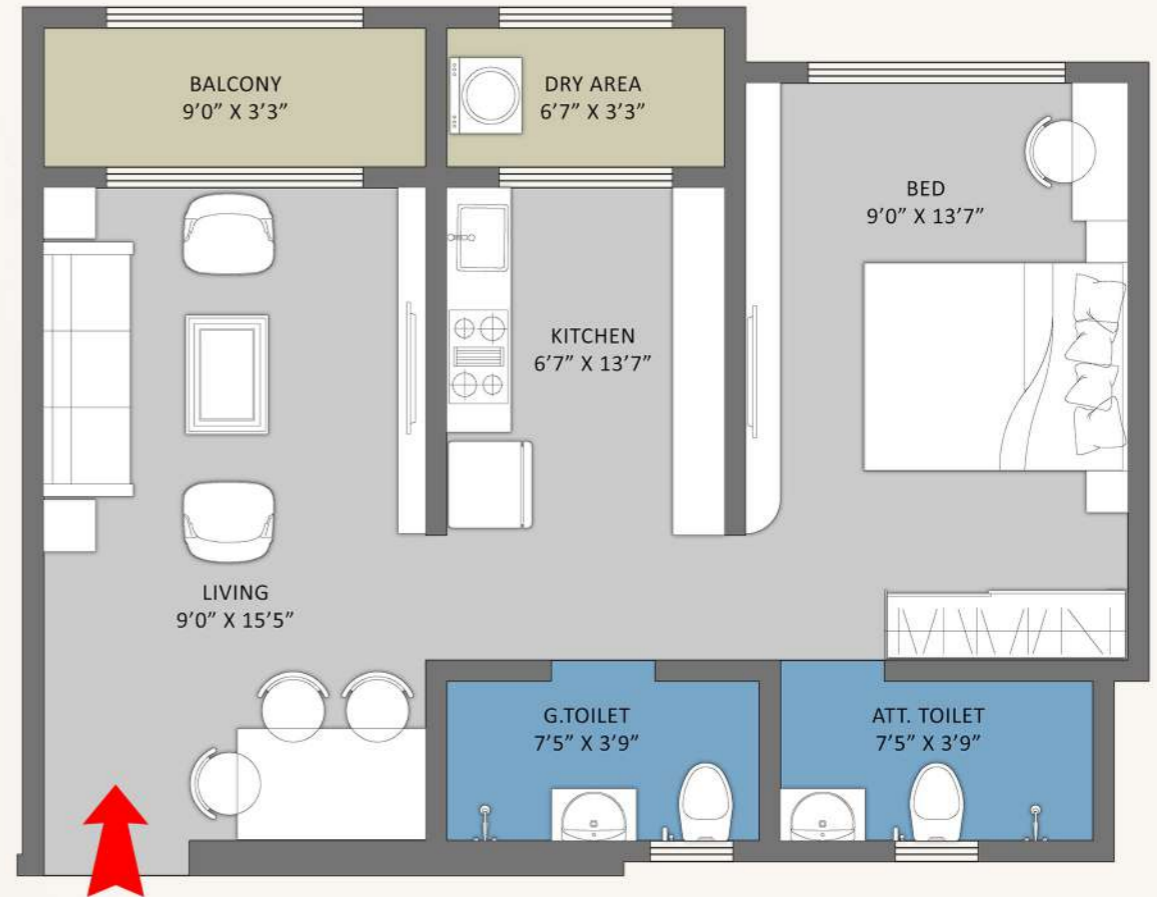


LEGEND

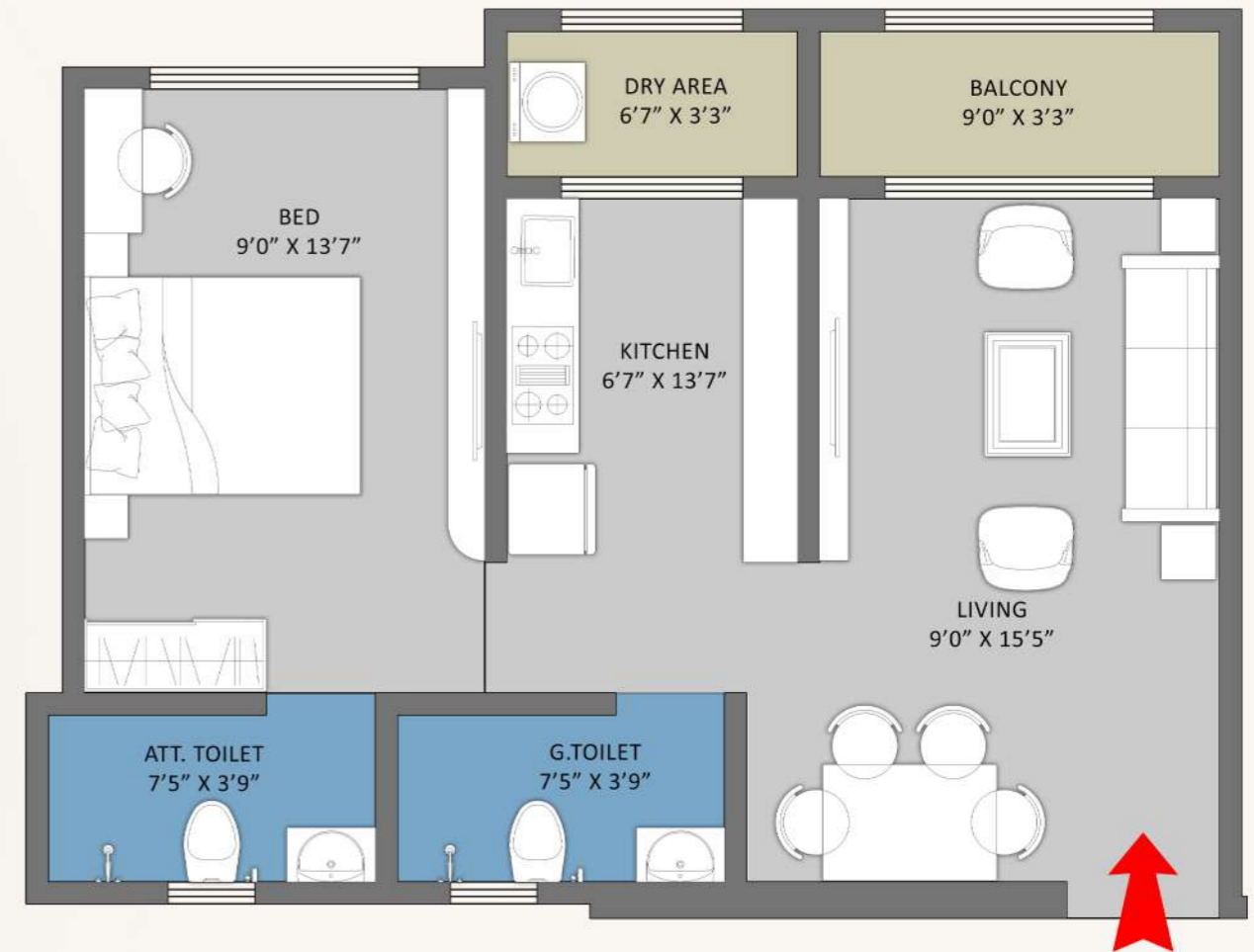


1 BHK UNIT PLAN

LIVING AREA	9'0" X 15'5"
BALCONY	9'0" X 3'3"
KITCHEN	6'7" X 13'7"
DRY AREA	6'7" X 3'3"
G. TOILET	7'5" X 3'9"
BEDROOM	9'0" X 13'7"
ATT. TOILET	7'5" X 3'9"



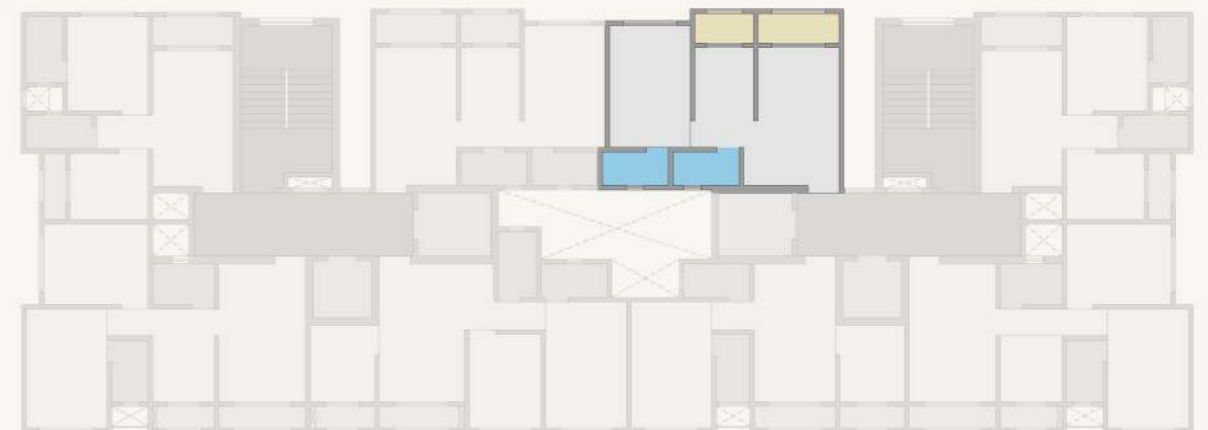
1 BHK UNIT PLAN



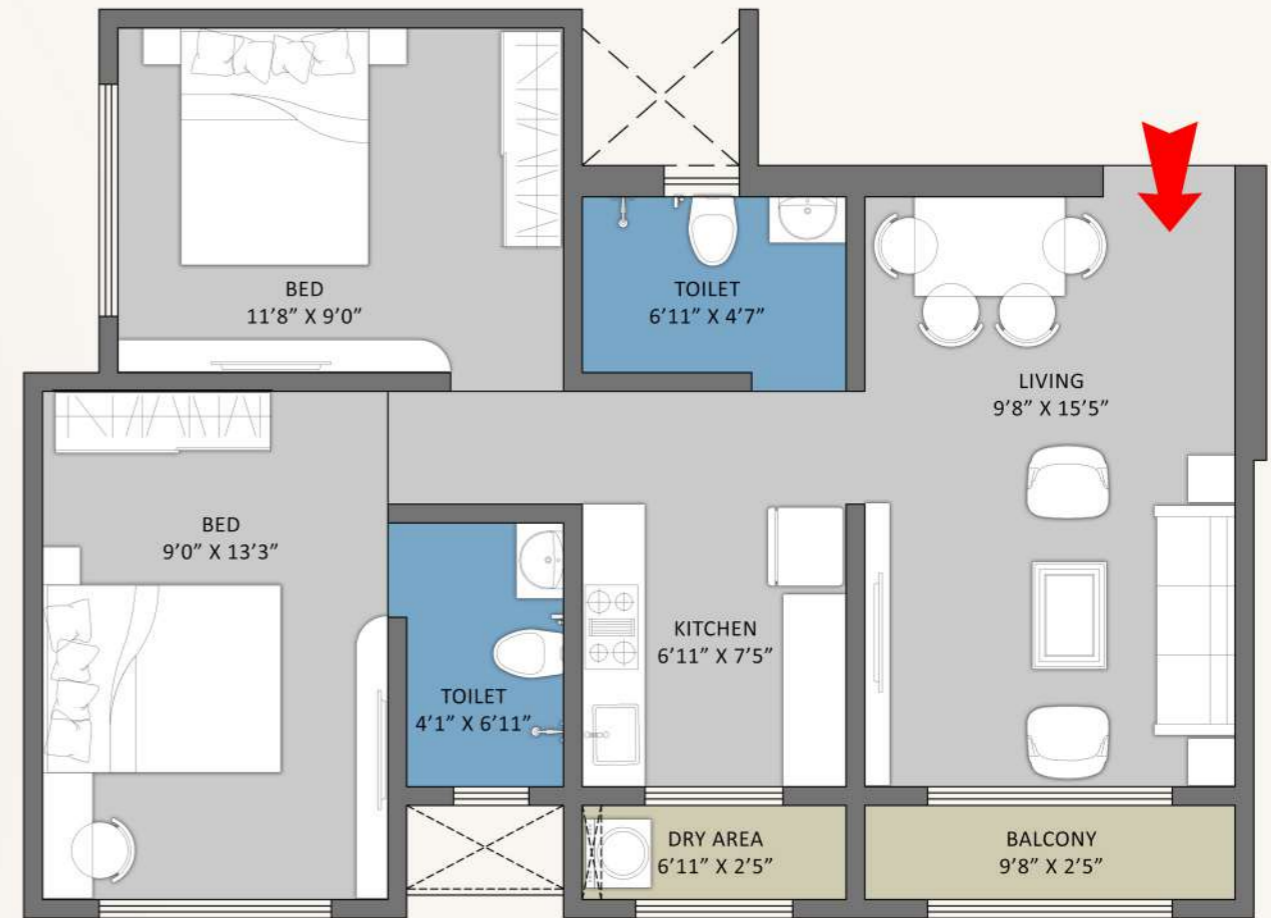
LEGEND

1 BHK UNIT PLAN

LIVING AREA	9'0" X 15'5"
BALCONY	9'0" X 3'3"
KITCHEN	6'7" X 13'7"
DRY AREA	6'7" X 3'3"
G. TOILET	7'5" X 3'9"
BEDROOM	9'0" X 13'7"
ATT. TOILET	7'5" X 3'9"



2 BHK UNIT PLAN

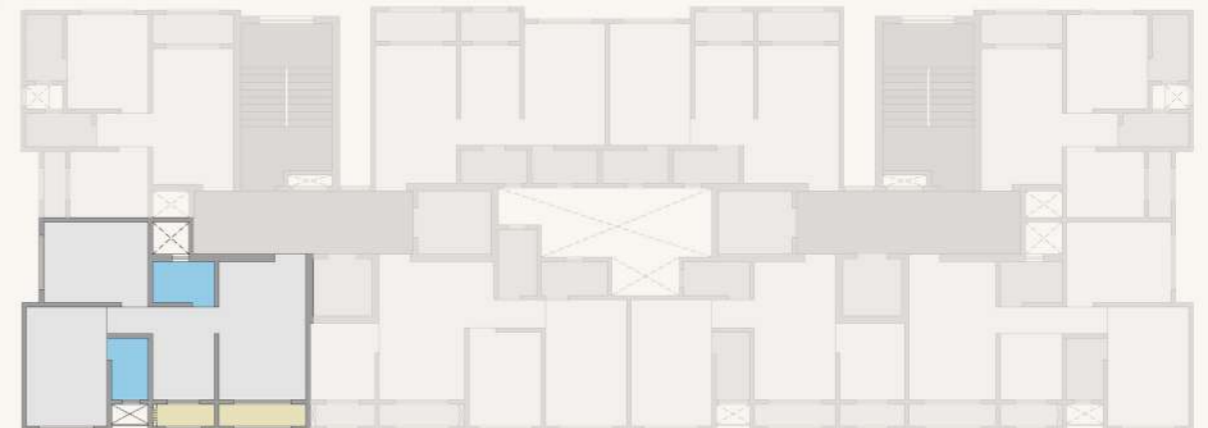


LEGEND

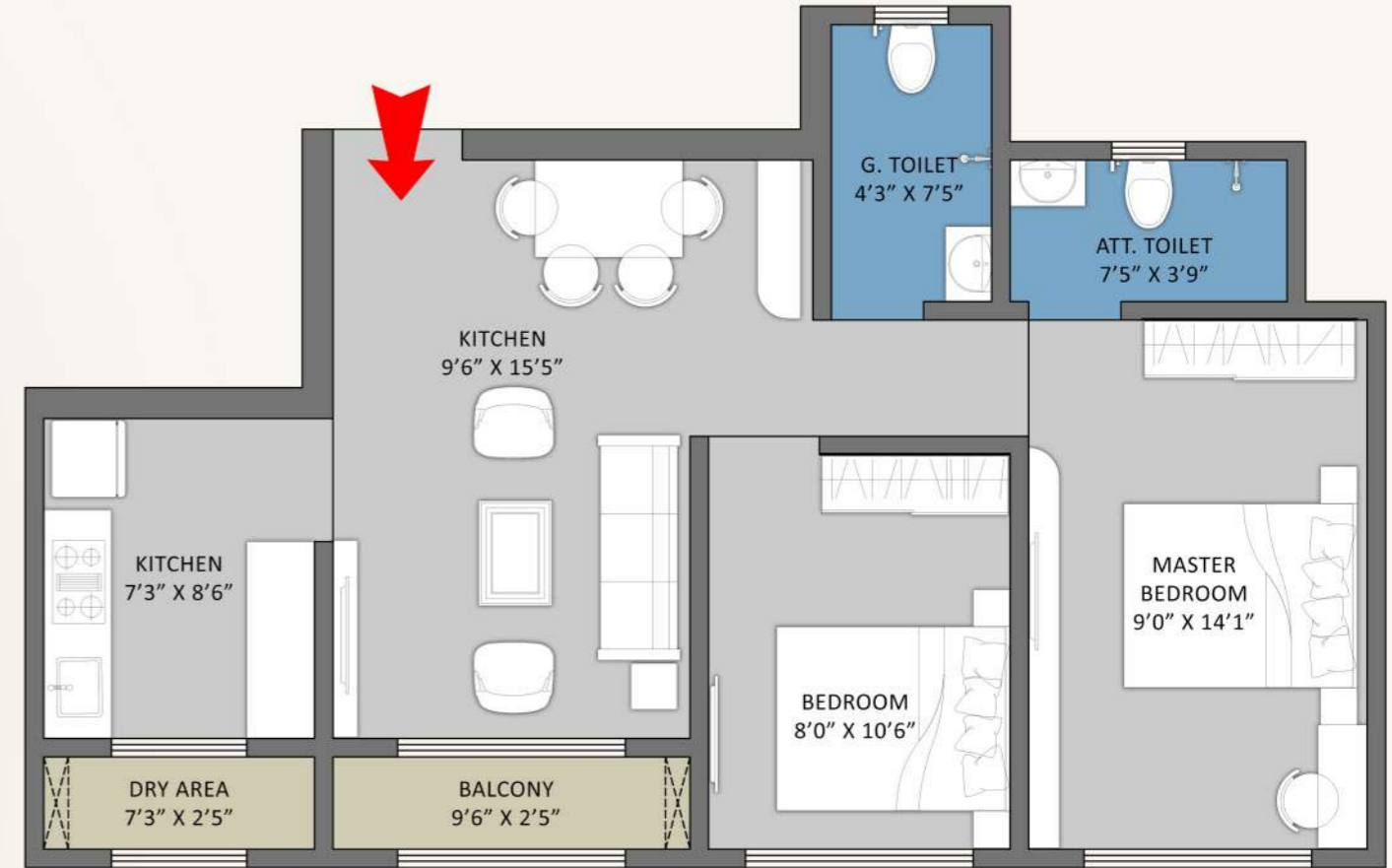


1 BHK UNIT PLAN

LIVING AREA	9'8" X 15'5"
BALCONY	9'8" X 2'5"
KITCHEN	6'11" X 7'5"
DRY AREA	6'11" X 2'5"
G. TOILET	6'11" X 4'7"
M.BEDROOM	9'0" X 13'3"
ATT. TOILET	4'1" X 6'11"
BEDROOM	11'8" X 9'0"



2 BHK UNIT PLAN



LEGEND



1 BHK UNIT PLAN

LIVING AREA	9'6" X 15'5"
BALCONY	9'6" X 2'5"
KITCHEN	7'3" X 8'6"
DRY AREA	7'3" X 2'5"
G. TOILET	4'3" X 7'5"
M.BEDROOM	9'0" X 14'1"
ATT. TOILET	7'5" X 3'9"
BEDROOM	8'0" X 10'6"

FITNESS CENTER



LEGEND

FITNESS CENTER @ 15TH FLOOR

FITNESS CENTER	17'2" X 10'8"
BALCONY	6'9" X 4'5"
BALCONY	9'6" X 4'5"

The height of Refinement

Standing tall with a firm foundation gets you the feeling of being above all the humdrum of life with the bird chirps, wind and ample sunshine for company.



Specification



FLOORING

Premium big Vitrified tiles in all rooms.
Anti skid flooring in toilet & bath.



KITCHEN

Granite kitchen platform.
Branded SS Sink with drain board.
Designer wall tiles.
Fresh air exhaust fan.
Provision for Water Purifier, Fridge, Washing Machine & drier.



BATH & WC

Quality Concealed plumbing.
Designer Bathroom with modern sanitary ware.
Designer wall tiles and Anti skid floor tiles.
Granite door frame.
Premium brand designer C.P. bath fittings.
Louvered windows with mosquito net.
Exhaust fan for fresh air.
Provision for hot water geyser.



DOORS

Designer laminated flush doors with elegant handles & branded locks.
Wooden door frames for main door & all other rooms.



WINDOWS

Anodised Aluminium sliding windows with tinted glass.
One panel mosquito prevention net.
Granite window sill.
MS Grill / Railing for safety on windows.



WALLS & PAINT

Gypsum finished internal walls.
Quality paint on internal & External walls.
Art inspired exterior texture walls.



ELECTRIFICATION

High grade concealed copper wiring with MCB.
Modern Modular Switches with circuit breakers.
Adequate Electric, AC, TV, Telephone points.
Intercom & Video door phone in each flat.
Internet cable provided.
Fan & Led lights in all rooms.

**RATNADEEP
HEIGHTS**
1&2 BHK PREMIUM LIVING



RATNADEEP HEIGHTS

1&2 BHK PREMIUM LIVING

THOUGHTFUL

EVERYTHING YOU NEED IS
JUST AROUND THE CORNER



KEY LOCATION

EASTERN EXPRESS HWY - 0.7 KM

KURLA S.T DEPOT - 0.4 KM

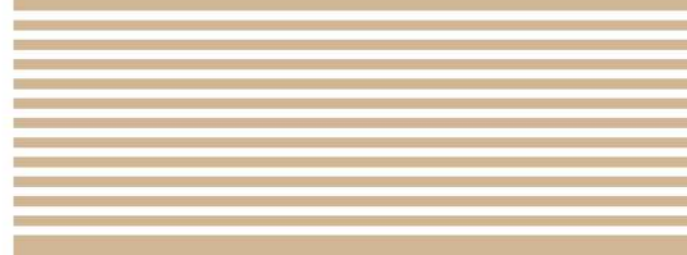
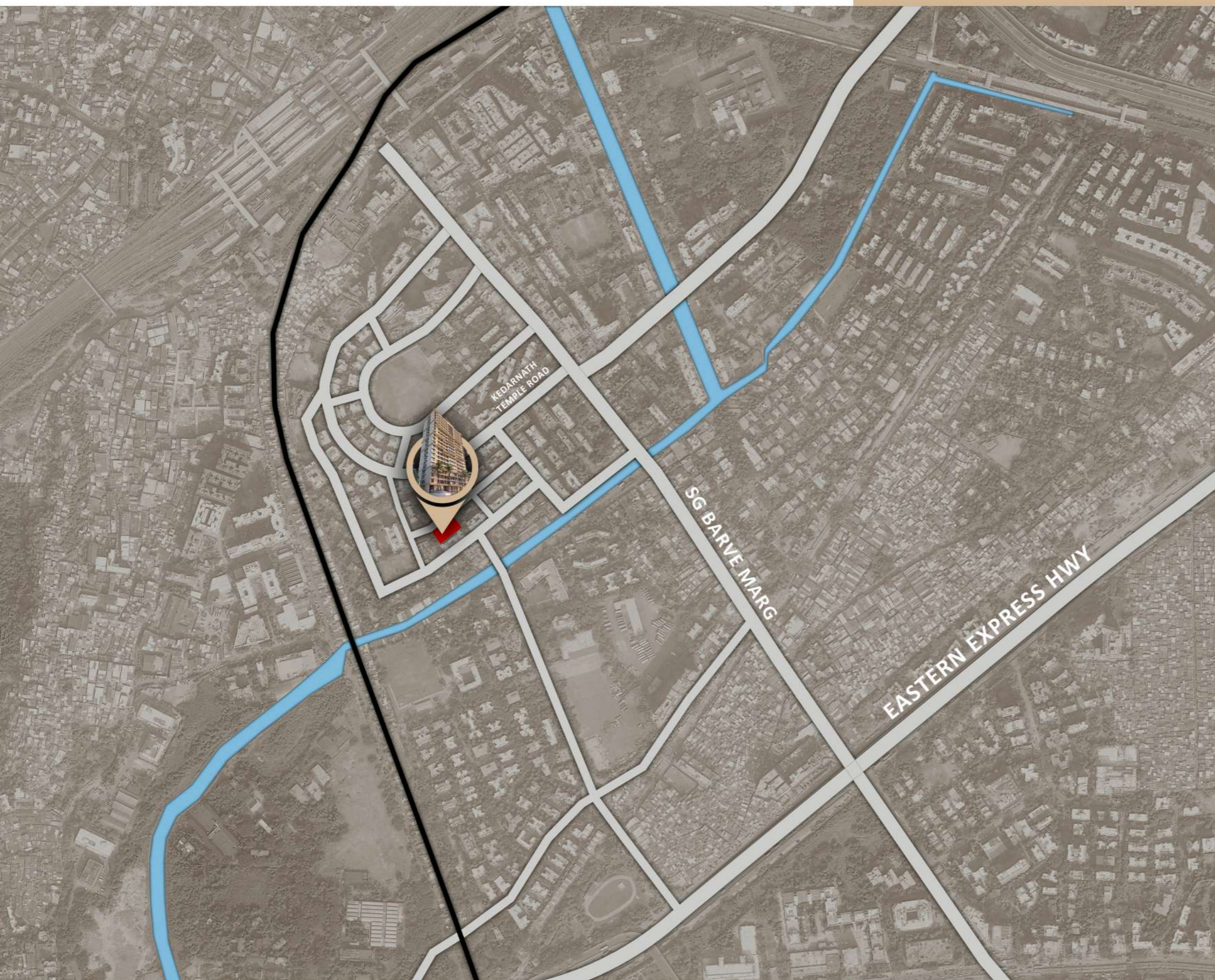
KURLA RAILWAY STATION - 0.7 KM

KEDARNATH TEMPLE - 0.2 KM

SHRI BALASAHEB THAKRE SAMAJ KENDRA - 0.3 KM

GANESH HALL - 0.3 KM

CHINTAMANI HOSPITAL - 0.4 KM





RATNADEEP HEIGHTS

BY KRV REALTY



Site Add : Bulding No. 60, Nehru nagar Ratnadeep C.H.S.Ltd., Nehru nagar MHADA Colony, Kurla(E), Mumbai - 400 024.

Booking office Address : Bulding No. 60, Nehru nagar Ratnadeep C.H.S.Ltd., Nehru nagar MHADA Colony, Kurla(E), Mumbai - 400 024.
Tel No. 02225222522 Email : contact@xyz.com

Architect : Ankit M. Makani | RCC Consultant : Associated Consulatants
MEP : Hudro Mechanical Consultants | PMC : NS Infra | Legal Advisor : Mannadir & Co.
Vastu Consultant : Dr. Raj Dusija | CA : Sudhir Dhara

Developer KRV REALTY

FOR BOOKING CALL : 8080808080 | 8080808080

WWW.XYZ-KRV.COM