

30
Years
OF MILESTONES



KANAKIA

Wall Street

Andheri (E)





Length measures in kilometres. Impact measured in trillions.

Wall Street, 1.1 km in length. The impact, however spans the globe. It would not be an exaggeration to say that the world takes a cue from here. Companies are benchmarked on how Wall Street perceives them. Corporate reputations are made or broken on their performance on Wall Street.

Wall Street is dotted with iconic corporate buildings but none as famous as The Bull. The Charging Bull, which is sometimes referred to as the Wall Street Bull or the Bowling Green Bull, is a symbol of aggressive financial optimism and prosperity, leaning back on its haunches and with its head lowered as if ready to charge. It suggests the energy, strength, and unpredictability of the stock market.

“Wall Street is the only place that people ride to in a Rolls Royce to get advice from those who take the subway.”

- Warren Buffett



“Wall street people are in fact very smart; they’re funny, they’re not company men who work their way up the chain.”

- Paul Krugman



“Greed, for lack of a better word, is good. Greed is right. Greed works. Greed clarifies and cuts through to the essence of the evolutionary spirit.”

- Michael Douglas in the movie Wall Street

World economies to world movies. Wall Street has inspired the entire spectrum.

Art, they say, is inspired by life. Sometimes, as in this rare instance, it can launch careers. It can make corporations. It can also become the bedrock for movies. The most famous of them all is the movie "Wall Street" made equally famous by the lead actor, Micheal Douglas and more recently, "The Wolf of Wall Street".

Wall Street is also perhaps the institution most quoted. In films, in boardrooms and in life.



What happens on Wall Street doesn't stay on Wall Street.

Coffee on the go. Bvlgaris to tell the time. The Porsches to ferry them around. The docked yachts in Monaco to celebrate their successes. The fancy condos in downtown Manhattan to spend their nights. Some of the more visible symbols that Wall Street is likely to be associated with.

There's also the rigorous side.

The Ivy league education. The 24x7 on tap life. The decisions that make or mar corporations.

The movements that can bring cheers across the globe.

Wall Street makes fortunes. Wall Street makes reputations. Wall Street also makes an impact.

KANAKIA
Wall Street

Andheri (E)

Kanakia Wall Street, Mumbai.
An idea whose time has arrived.

Influence. Fame. Success. Lifestyle. Welcome to Kanakia Wall Street.

What's changed. India is the only game in town.

What hasn't changed. Mumbai is India's commercial capital.

What's changed. India is inextricably linked to world markets.

What hasn't changed. Mumbai continues to lead the charge.

What's changed. India demands a global work space.

What hasn't changed. Mumbai will pioneer such a space.

Kanakia Wall Street, Mumbai is created keeping in mind the demands of the modern day business and new age entrepreneurs.



Artist's Impression

*Where business
never sleeps*

Disclaimer is on the back cover page of this brochure



It's not an office space. It's an opportunity space.

Perfect location. New-age amenities. Smart infrastructure. And the dependable Kanakia name. Kanakia Wall Street has everything an ideal investment has. The metro line has given a welcome respite from the traffic woes, making Andheri (E) one of the comfortable places to commute.

- **Prominent Industries - Pharma, FMCG, IT, logistics & BFSI**
- **MNCs like (HUL, P&G, etc.) are Headquartered in Andheri (E)**
- **Andheri (E) is well connected to various parts of Mumbai via road and rail**
- **8 out of 13 stations on the Versova-Ghatkopar Metro line fall in Andheri (E)**
- **Both the domestic and international airports are easily accessible**

Andheri has a new attitude. Kanakia Wall Street.

Andheri has many companies who have set up their base here. The comfortable access from western and central parts of Mumbai and proximity from the airport and residential zones make Andheri East, an ideal base for business. Kanakia Wall Street is located in the best part of Andheri, giving you an advantage within an advantage.

About Project:

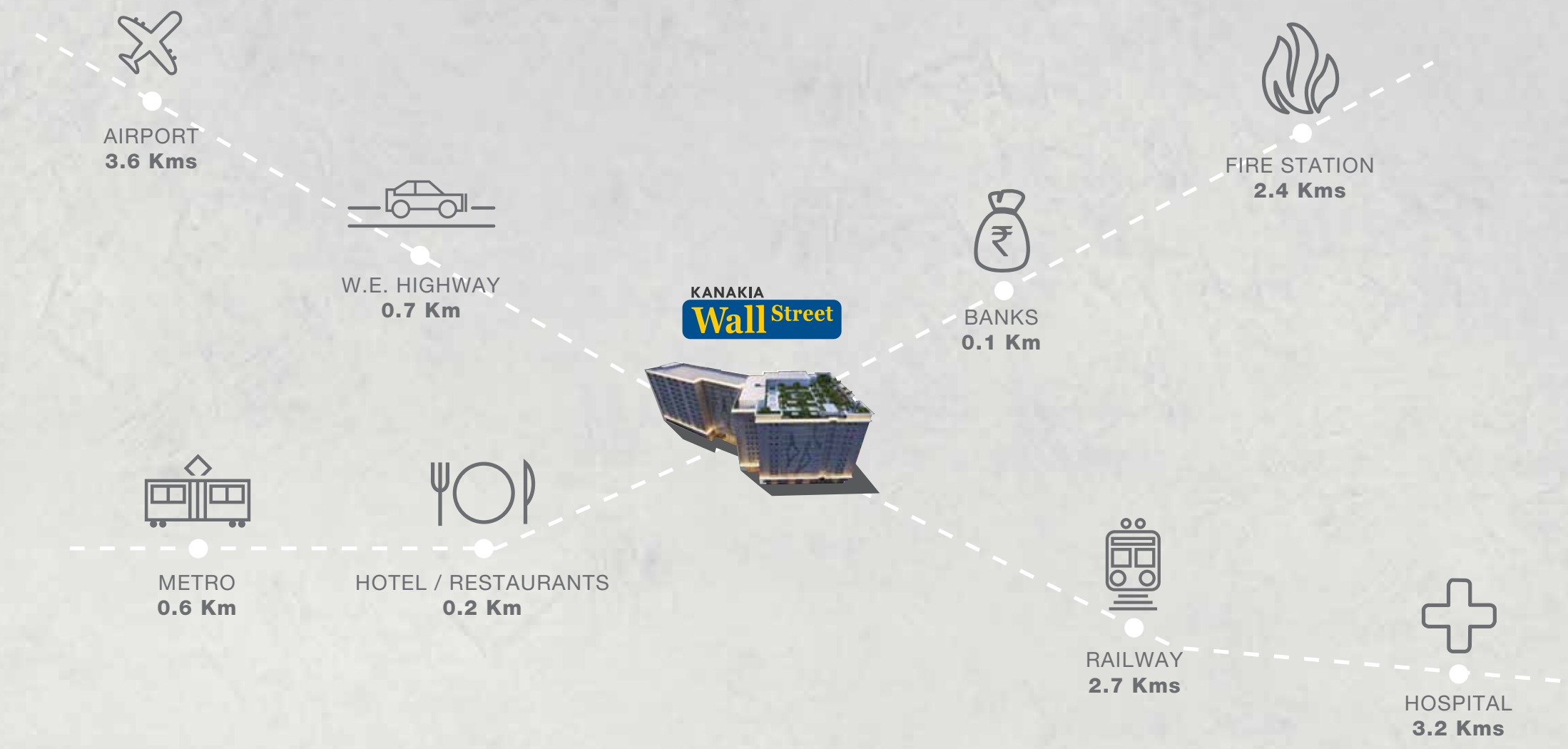
- **Kanakia Wall Street comprises of Wing A & Wing B**
- **Wing A is an ongoing project -**
MAHA RERA registration number: P51800000121
available at website: <http://maharera.mahaonline.gov.in>
- **Wing B OC is received and is completed project**

Project highlights:

- **Office spaces ranging from 3000 sq. ft onwards**
- **Multi-level car parks**



Connectivity



Our footprints in Andheri

- 351 ICON
- BOOMERANG
- ATRIUM 2
- HOTEL COURTYARD BY MARRIOTT
- 215 ATRIUM
- DYNASTY
- SEVENS
- 349 BUSINESS POINT
- EAGLES FLIGHT
- RAINFOREST



Amenities:

- Power Naps Sleep Pod*
- Landscaped Area on Terrace
- Concierge**
- Cafeteria**
- Valet Service**
- Yoga Space on Terrace
- ATM Machine
- Wi-Fi in Lobby
- CCTV in Car Park and Common Area

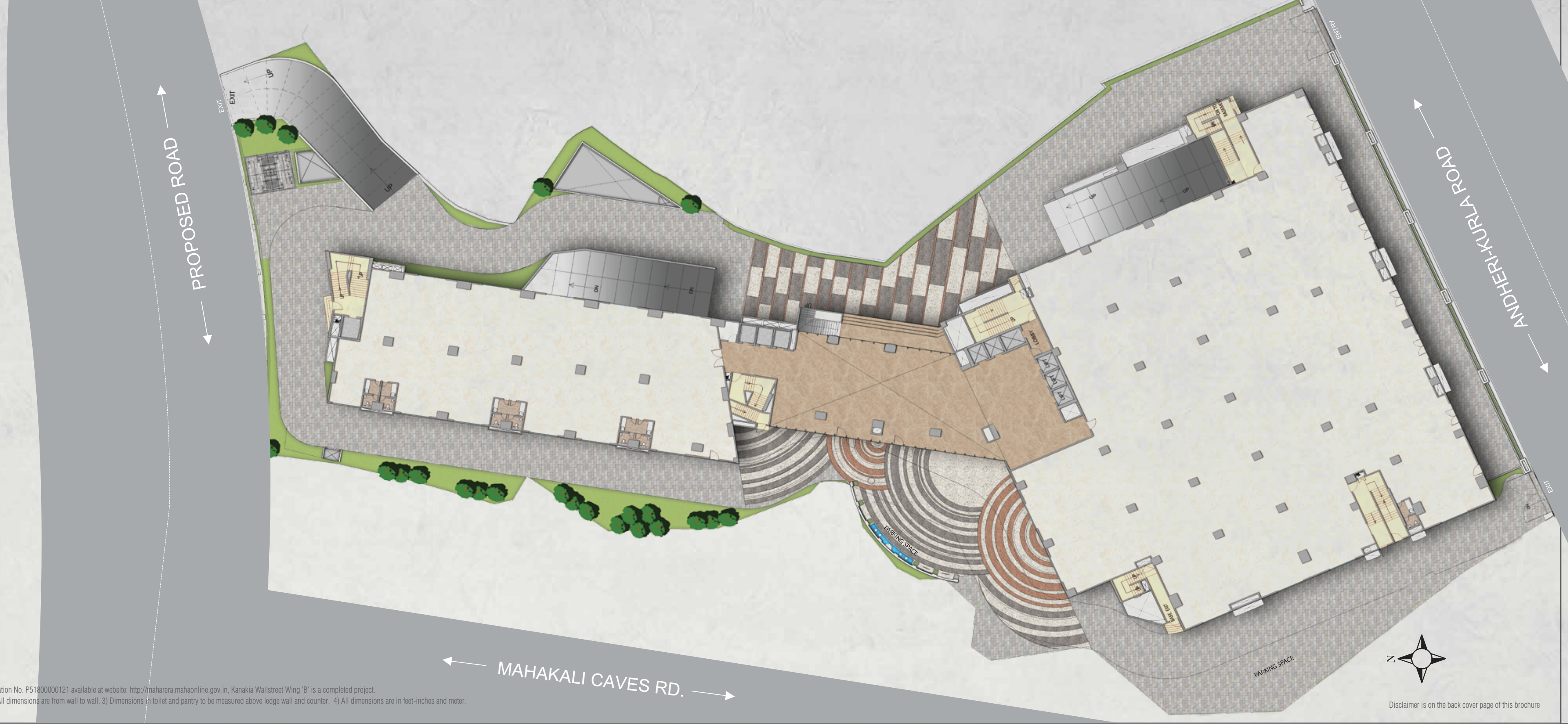
**Power naps. Afternoon walks.
Success is demanding.**

Today we work in a competitive environment, and sometimes we need to put in late nights or all-nighters. Therefore creating a space that meets such work scenarios is the need of the hour. At Kanakia Wall Street, the amenities are chosen keeping in mind the modern-age entrepreneur and employee to ensure comfort in uncomfortable hours.

* Wherever aesthetically looks good ** Paid Services

Actual Photograph

Layout Plan



Disclaimer: Kanakia Wallstreet Wing 'A' is an ongoing project. It has been registered under Maharashtra Real Estate Regulatory Authority vide MahaRERA Registration No. P5180000121 available at website: <http://maharera.mahaonline.gov.in>, Kanakia Wallstreet Wing 'B' is a completed project. The Plans shown herein are for informational purposes only. 1 Sq. Mtr. is equal to 10.764 Sq. Ft. area. 1) All written dimensions are from unfinished surface. 2) All dimensions are from wall to wall. 3) Dimensions in toilet and pantry to be measured above ledge wall and counter. 4) All dimensions are in feet-inches and meter.

Disclaimer is on the back cover page of this brochure

Completed Commercial Projects

KANAKIA 215 ATRIUM

Andheri (E)

215 Atrium is an aesthetically designed corporate office building of approx. 3,00,000 sq. ft. and also includes a 300 key four star hotel (Courtyard Marriott) within the same complex. It is an ideal destination for corporates to house themselves here due to its strategic location and efficient design systems.



WESTERN EDGE I & II

Borivali (E)

To give a fresh new treatment to small office spaces, Kanakia Spaces planned 'Western Edge I & II'. This project recognises the energy and drives of today's upcoming corporate world and is designed as a premium state-of-the-art office to nurture and grow those aspirations.

'Western Edge' is the only premium office building of its kind in Borivali (East). Already an established destination with an up-market tenant profile, 'Western Edge' is an integrated hub with premium commercial establishments.





Completed Commercial Projects

KANAKIA BOOMERANG

Andheri (E)

INNOVATIVE OFFICE SPACES

'Boomerang', the award winning commercial project from the Kanakia Spaces stable is designed taking into aspect the minuscule details that promise the realization of great business visions. Modelled around the native Australian hunting contrivance, 'Boomerang' is a structure that is built, like its paradigm, to use the energy surrounding to draw its own.



KANAKIA ZILLION

BKC ANNEXE

INDIA'S LARGEST PHOTO GALLERY

'Kanakia Zillion' is a testimony to a company that dreams big. It's an inspiring workplace that's big on space, big on design, big on amenities and more importantly big on grandeur. 'Kanakia Zillion' is a commercial development of about 5 Lakh sq. ft. at BKC Annexe.



Actual Photograph of Lobby



Limca Book of National Records
Largest Photo Gallery on a City
The Kanakia Zillion Gallery

Our Lobby has walked into
Limca Books of Record

A Group that stands for Quality & Integrity

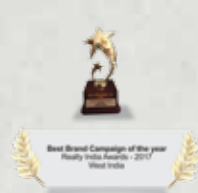
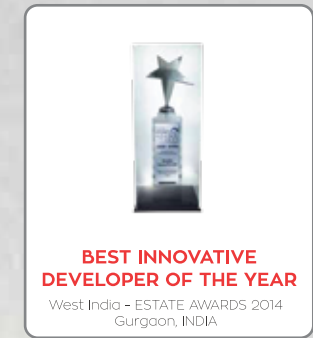


Kanakia Group was formed in the year 1986. Today Kanakia Group has earned a distinct reputation as one of Mumbai's premium developers. Kanakia has developed over 14 million sq. ft. of commercial, residential, entertainment, education and industrial spaces. Kanakia has been honored with several prestigious awards for their landmark projects.

Our Achievements



Awards & Accolades





Site Address: Kanakia Wall Street, Chakala, Andheri-Kurla Road, Andheri (E), Mumbai - 400 093.

For Sales Enquiry Call: 1800 267 1200

Corporate Office: "215-Atrium", 10th floor, Next to Courtyard Marriott Hotel, Opp. Divine Child High School, Andheri Kurla Road, Andheri (East), Mumbai - 400093. INDIA

Phone: 91-22-6726 6666 / 6726 7777 (Board) | Fax: 91-22-6693 7777 | web:www.kanakia.com

Kanakia Wallstreet comprises of Wing A & B, Wing 'A' is an ongoing project. It has been registered under Maharashtra Real Estate Regulatory Authority vide MahaRERA Registration No. P51800000121 available at website: <http://maharera.mahaonline.gov.in>, Kanakia Wallstreet Wing 'B' is a completed project.

Disclaimer: The contents and information contained in this brochure is for general information purpose only. The images are artistic impression and stock images are for representation purpose. The illustrative representations herein including layout plan, location map, connectivity details, facilities and amenities are merely creative imagination and an artistic impression. The photograph/s contained herein used for indicative purpose only. Unless otherwise specifically indicated, it is not intended as an offer or solicitation for purchase or sale. Any reliance you place on such information is therefore strictly at your own risk.

We disclaims all warranties, expressed or implied, including but not limited to, implied warranties of merchantability or fitness for any particular purpose.

This property has been mortgaged in favour of "HDFC Limited". The No objection certificate/permission of the mortgage bank/institution would be provided for the sale of units/property, if required.