



AMAAN HEIGHTS



**1 BHK**  
RERA APPROVED

**BUDGET HOME**  
IN THE HEART OF  
**JOGESHWARI**  
**WEST**



<b>Architect</b> SHRI VISHWAS SATODIA	<b>Consulting Architect</b> S.D. Consultants	<b>RCC</b> R.D. Magdum	<b>Solicitors</b> V.S. Jog & Co.
--	---	---------------------------	-------------------------------------

**RERA No. P51800048787**

OFFICE ADDRESS  
Shraddha Construction Co., Amman Heights, Opp. Dewan Center,  
S V Road, Jogeshwari West, Mumbai - 400102

shraddhaconstructionco6289@gmail.com

# AMAAN HEIGHTS

Standing true your expectations, it is a luxurious project with an abundance of exceptional features. AMAAN HEIGHTS, a 23 storey tower with the best of the architecture the project is perfect expression of space and design. Shradha Construction offers its customers to Choose your happiness from a distinctive range of 1BHK apartments. AMAAN HEIGHTS is located at the prime location of Jogeshwari (W), Every inch of the luxurious residential project gives you a feeling of luxury space and a capability to always deliver more.

Jogeshwari is one of the most functional suburbs of Mumbai. Choice of the rich and famous celebrities from all walks of life, it is home to heritage structures, top educational institutes, world class medical facilities and exclusive retail outlets. Carving a unique identity with its elevation, Shradha Construction every apartment at AMAAN HEIGHTS with a perfect setting for home that comes from aspirations.



# ISOMETRIC VIEW



AMAAN HEIGHTS



- Optimized Space Design with Minimum Space Wastage
- 2 Bathrooms - Master & Common

All the images are artistic and for representational purpose only.

# TYPICAL FLOOR



AMAAN HEIGHTS



All the images are artistic and for representational purpose only.

## AMENITIES



AMAAN HEIGHTS

### GENERAL AMENITIES

- High Speed Elevators
- One Time Anti-termite Treatment To The Foundation

### FLAT FEATURES

- Vitrified Tile Flooring
- Acrylic Or Similar Quality Paint On Internal Walls
- Anodised Aluminium Sliding Windows With Ms Grill
- Telephone & Cable T.V. Points In Living Room
- A.C Points in Living & Bedroom
- Provision For Internet In Bedroom

### KITCHEN FEATURES

- Vitrified Tiles Flooring
- Granite Platform With Stainless Steel Sink And Drain Board
- Additional Granite Service Platform
- Exhaust Fan
- Provision For Water Purifier

### BATHROOM FEATURES

- Vitrified Tiles Flooring
- Designer Tiled Dado Upto Door Height
- Superior Quality Sanitary & Cp Fittings
- Concealed Plumbing
- Storage Water Heater
- Exhaust Fan

### Entrance Lobby (Luxury At First Sight)

With An Entrance Lobby So Grand And Vibrant, Amaan Heights All The Plans In Place To Make You Fall In Love At Your First Welcoming. Aesthetically Decorated And Well Chiselled Interiors Of The Lobby, Amaan Heights Good Fortunes About Your Stay Here. Flamboyant Designs, Modern Elevation Are Just Some Of The Features You

## INDOOR AMENITIES



AMAAN HEIGHTS



All the images are artistic and for representational purpose only.

## SAFETY FEATURES



AMAAN HEIGHTS



- Modern Security & Fire Fighting Systems
- Intercom System & CCTV
- Concealed Copper Wiring
- Car Parking
- Mcbs & Elcbs

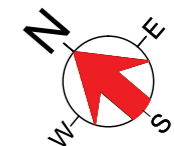
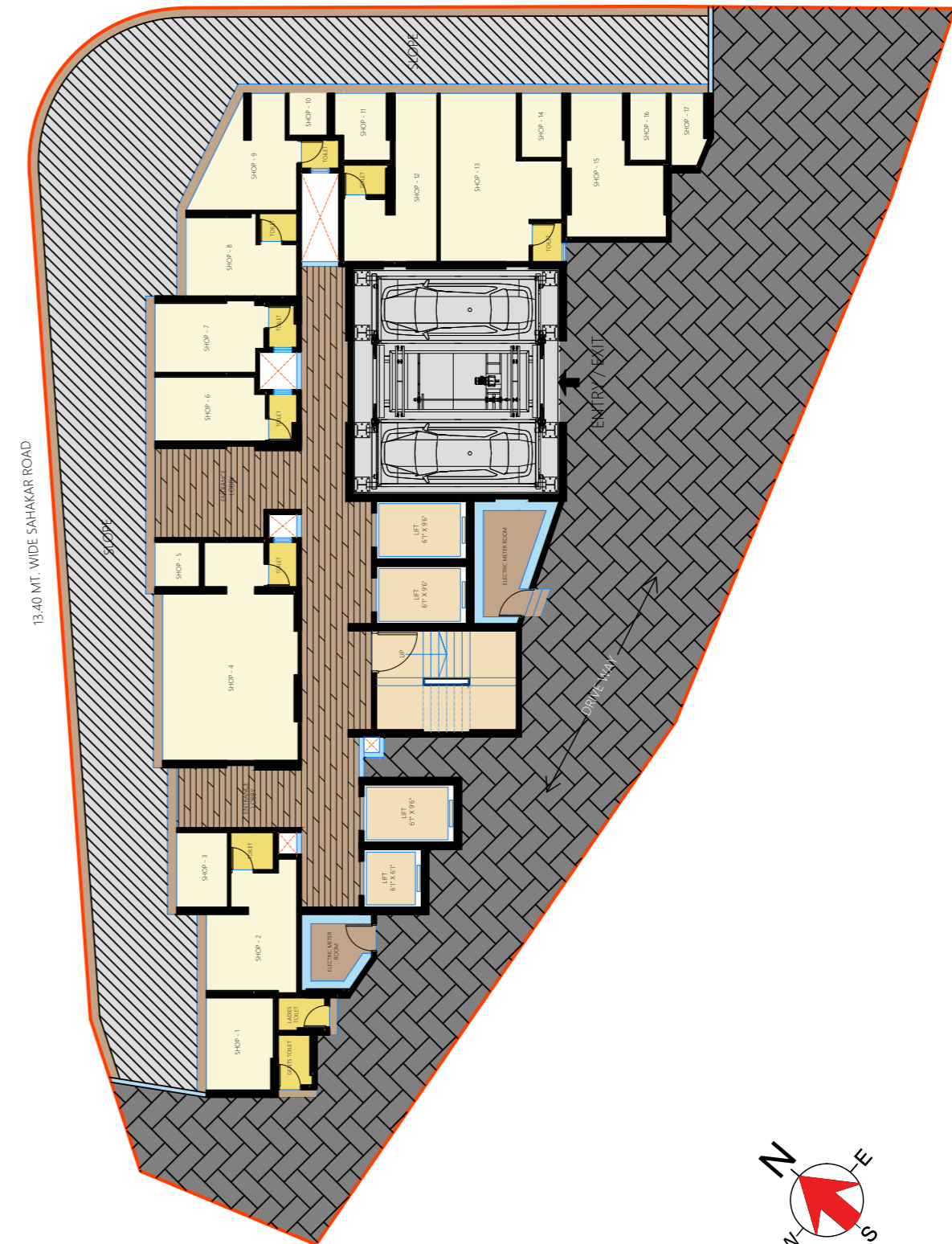
All the images are artistic and for representational purpose only.

## GROUND FLOOR LAYOUT



AMAAN HEIGHTS

27.45 MT. WIDE S.V. ROAD



All the images are artistic and for representational purpose only.

## LOCATION



AMAAN HEIGHTS

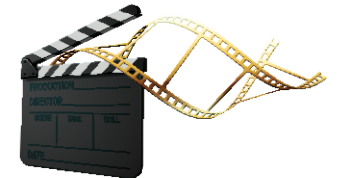


All the images are artistic and for representational purpose only.

## LOCATION & CONNECTIVITY



AMAAN HEIGHTS



Western Express Highway  
Proposed Metro Station  
Andheri Metro Station  
International / Domestic Airport  
Cafe & Restaurants  
Entertainment & Leisure  
Cinema

All the images are artistic and for representational purpose only.