

VTP  
altair  
Celebrating The Extraordinary

*“To live an extraordinary life,  
you must resist an ordinary approach.”*

*- Frank McKinney  
American swimmer & Olympic champion*

For globetrotters,  
who wear their passion  
on their sleeves.

For corporate czars,  
who dance to the beat  
of their hearts.

For women of substance,  
who turn taboos into culture.

For power couples,  
who redefine  
family goals.

For families,  
who are used to  
the finest lifestyle.



# Kharadi's skyline, an elevated playground for the brightest.

From one of the youngest CEOs-in-the-making, to the most loving husband. From the coolest diaper juggler, to the best son, parents can have!

For those who love to excel at everything, VTP Realty offers a way of life that's as exceptional. VTP Altair, is a world in itself, designed for the ones who hear with their hearts and see with their heads.

Envisioned to light up the neighbourhood, its glass facade complements the luminance of those within. VTP Altair's three towers, with 35 floors each, are perhaps the tallest in Kharadi. An apt tribute to the stature of its inhabitants, should we say.



# An address befitting the czars

You are consistently scaling new peaks, a journey that VTP Realty knows well. You are building an extraordinary life for yourself and your family. We would love to present to you a home that is just as extraordinary, in design and in presence.

Located in the exalted neighbourhood of Panchshil Towers and YOO Villas, at VTP Altair, Pune's who's who will comprise your coterie for evening soirees.

The spacious 2 and 3 bed residences have been curated to offer you experiences that reflect our thoughtfulness. Homes in VTP Altair are designed using our MLA (Maximum Liveable Area) Homes philosophy, where extraordinary 4 or 6 bedroom duplexes or triplexes can be carved out easily for that perfect luxury. VTP Altair is extraordinary in every little detail. The 6x4 feet luxury tiles, for instance. Unheard of in high-rises, they exude luxury of space and texture. Or, the tinted glass facade for that matter. Or, the expansive podium amenity area. Or, the fact that Altair is a part of the 150+ acre Township Codename Pegasus. VTP Altair truly celebrates the extraordinary by being extraordinary itself.



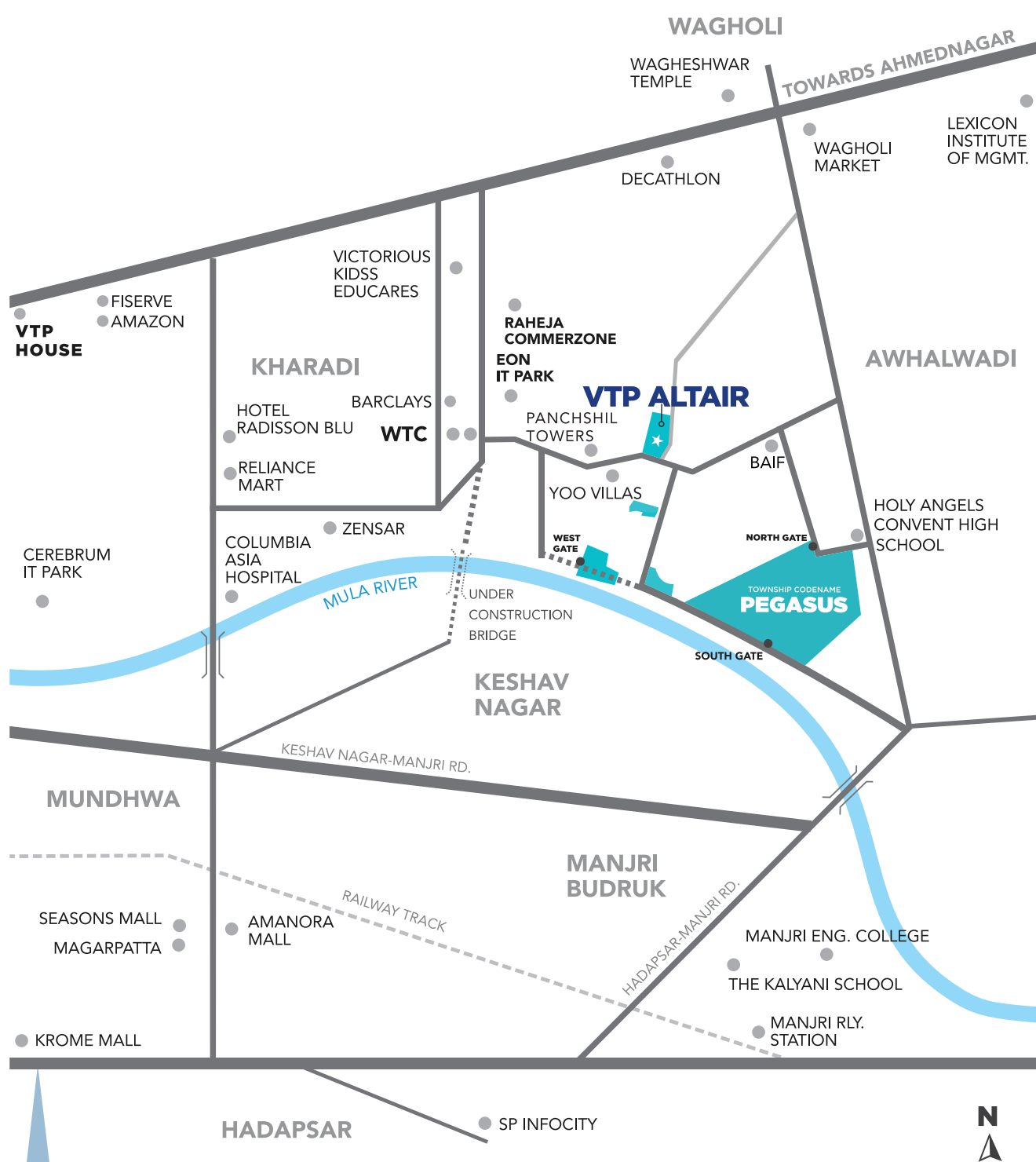
# Location Highlights

Your neighbourhood is World Trade Centre, Eon IT Park, Panchshil Towers EON Waterfront and Yoo Villas, among others.

To call Kharadi, the epicentre of modern Pune's business district, would be stating the obvious. It is where modern epics will be written, where new icons will step into the limelight. VTP Altair will step into this exalted location not just as a new landmark, but as a destination by itself. After all, it will be home to the extraordinary.

We must add that Kharadi attracts premium rentals due to a massive catchment of the IT/ITES workforce in Kharadi, and the neighbouring IT hubs of Pune, East.

It also offers better capital appreciation and higher resale value.



## CELEBRATE IN LEISURE

1. Clubhouse with fully equipped gymnasium, celebrations hall & indoor games room
2. Party lawn adjoining al-fresco dining area with barbeque counter
3. Amphitheater & Stage
4. Yoga deck on clubhouse roof

## REFRESH AND CHILL

5. Oval Swimming pool with Jacuzzi & Kid's pool

## ZEN & GLEE

6. Kid's play area
7. Toddlers play area
8. Senior citizen plaza
9. Reflexology path
10. Gazebo
11. Multiple Lawns
12. Chit chat plaza
13. Herbal garden

## FITNESS & SPORT

14. Jogging track
15. Outdoor gym
16. Outdoor chess
17. Lawn tennis
18. Multipurpose court
19. Net cricket
20. Indoor Squash court

# THE MASTER LAYOUT



# Quality time with family isn't just about Michelin star dinners.

At VTP Altair, we have tried to create a new benchmark in every aspect of the project. The amenities, for instance. There are a host of amenities, spread over an acre across the podium and ground levels, for you and your family to choose from. Be it entertaining friends, colleagues, or hosting your extended family on a festival, VTP Altair thoughtfully provides avenues for all your social and recreational needs.

Surrounded by the three towers, the central amenities arena is bound to become the buzzing heart of VTP Altair.





The idea of a  
world-within-the-world  
isn't an idea, anymore.

Add up the calories at the barbeque corner, only to shed them at the azure pool. Or, connect with like-minded people, who become friends for life, at the clubhouse. And, if you are a party trooper, then the spacious party hall and lawns are meant just for you. The aficionados will see our amphitheatre as a perfect setting for staging classical dramas, or an evening of karaoke music. A life as grand and celebrated as yours, needs an appropriate stage too.



# The perfect antidote to your rushed lifestyle.

The glass clubhouse boasts a fully equipped gymnasium, a function hall and an indoor games room. It has a party lawn with an adjoining al fresco dining area and a barbeque counter. Making it complete is the amphitheatre. The clubhouse overlooks the oval swimming pool, jacuzzi and the kids' pool. Its rooftop is a quiet haven for yoga aficionados.

The bouquet of amenities includes separate kids' and toddlers' play areas, senior citizens' plaza, a reflexology path, gazebo, multiple lawns, chit-chat plaza, herbal garden, jogging track, outdoor gym and outdoor chess board. It's an endless list of amenities. You don't expect any less, either.



We have made  
sure you continue  
to make waves.

Oval-shaped, lit, swimming pool with  
infinity edge, kids pool and jacuzzi.



The arena where the generation gap really works.

Kids' play area, senior citizen zone and chit-chat plaza.



Work-from-home gets a new definition.

Work-from-home spaces created as a part of the amenity area, so you can work from 'home' in peace.



Our thoughtful homes are  
not limited by size.  
Nor are your aspirations.

At VTP Altair, you have a choice of configurations for the unique needs of your family. The Simplex and Duplex apartments for instance. The Simplex layouts combine adjacent units on the same floor, effortlessly. The Duplex layouts, spread across two floors, offer an ideal split in the modern work-from-home times.

These apartments are designed keeping in mind not just the needs of a modern nuclear family, but also joint families, as well as, families with senior citizens. They have spaces ideal for me-time, while offering enough opportunities for the precious we-times.

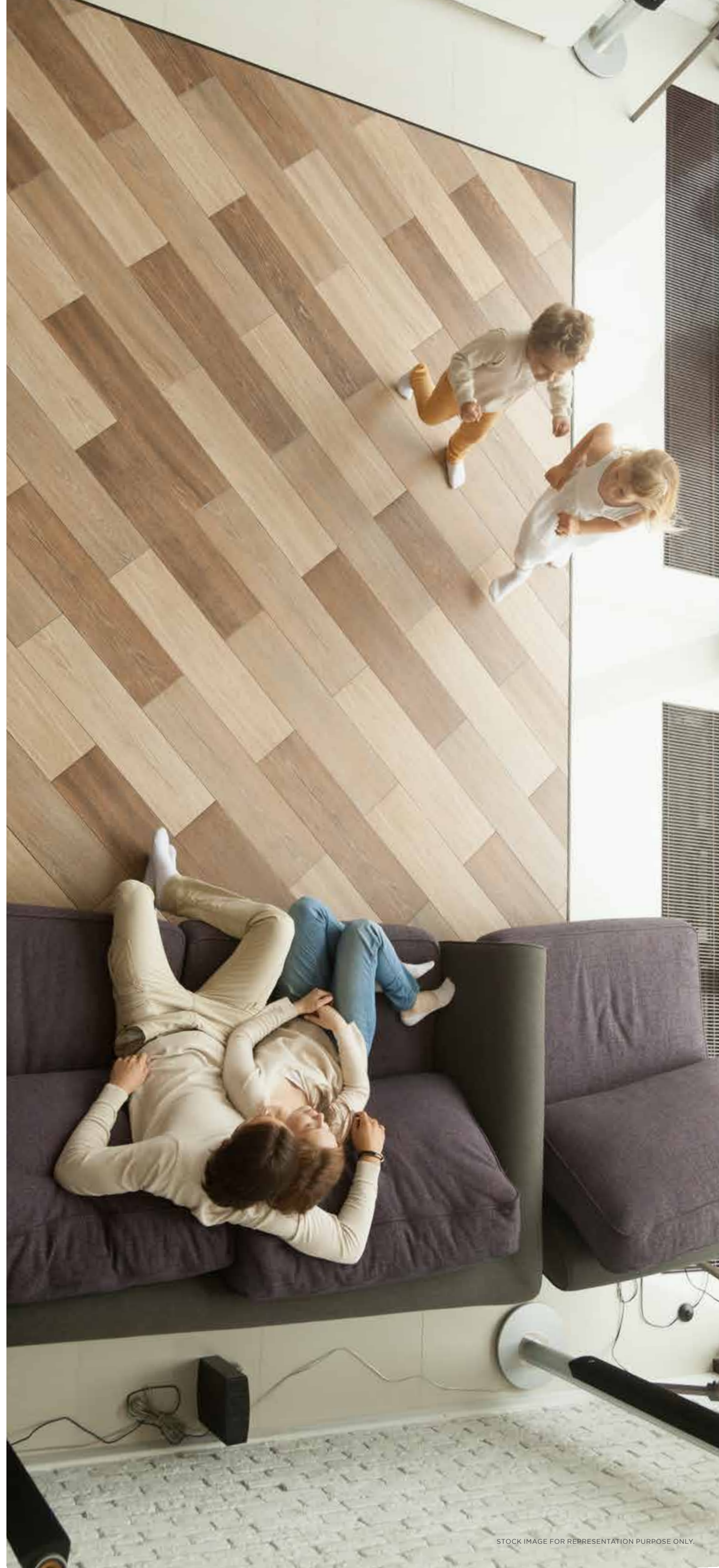
Every VTP home comprises thoughtful details like MLA design, best-in-class fixtures & fittings, 6-feet tiles, motion sensor lights and quality of finish that you will marvel at.



# Maximum Liveable Area (MLA) Homes

MLA Homes is a design philosophy pioneered by VTP Realty. It is a meticulous, spatial planning, approach that gives the residents more space to enjoy the finest moments of life. We minimize dead corners and passage spaces, to cull out the maximum liveable area within each apartment. Every single room is intelligently planned to give you the most thoughtful and optimized space. Even the size of decks and dry balconies is just right for the purpose, perfectly usable and functional, without any wastage. No wonder, every VTP Realty home has larger floor sizes in the same carpet area.

Our amenity planning and design is also a reflection of the same philosophy. We don't compromise on the space allocated for recreation and leisure for the entire family. We pay a great deal of attention to the finer details that enhance the quality of life.



Welcome to the league ...extraordinaire.



# The Finer Details

## PROJECT LEVEL

3 towers of 30 residential floors  
2 grand entrance gates with security cabin  
5 floors of residents parking  
Grey tinted glass facade for natural light & cooler atmosphere inside  
Stylish entrance lobbies for every tower  
100% DG back-up for lifts & common areas  
Car charging points in parking  
Common washroom for drivers  
4 lifts in each tower - (3 Passenger + 1 Service)  
Superior quality apex / texture / protective exterior paint  
Earthquake resistant RCC structure  
ALUFORM construction

## INSIDE YOUR HOME

### SMART HOME FEATURES

Digital lock - Yale or equivalent  
Featherlike touch pad switches  
Lights control (Mood lighting), AC, Fan & Geysers control via a mobile app  
Also compatible with Alexa\* voice command  
Motion sensor lights in all baths  
4-tier security system with video door connected to the smart phone

### INTERNAL FLOORING

Extra-large size marble-finish glazed vitrified tiles  
- Living, dining, kitchen & lobby – (6 x 4 feet)  
- Bedrooms – (5.25 x 2.6 feet)  
Dry & Open Balcony - Anti-skid ceramic tiles

### INTERNAL WALL FINISHES

Most premium lustre paint for internal wall

## DOORS

Premium Veneer finish main door  
All Bedrooms & bathroom doors – Laminated flush door

## WINDOWS

Powder coated aluminum sliding windows

## KITCHEN

Granite kitchen platform  
Stainless Steel sink  
Ceramic/glazed tiles above kitchen platform - 2 feet  
Provision for water purifier

## TOILETS

Toilet door frames in granite  
Glass partitioning in master toilet  
CP fittings – Grohe/American Standard or equivalent  
Sanitaryware - Kohler/American Standard or equivalent  
Flooring – Antiskid tiles  
Designer decorative wall tiles upto 7 feet  
Geysers in all toilet

## PLUMBING

Concealed anti-corrosive plumbing

## BALCONIES

1 foot brick wall + 3.5 feet glass railing to balcony  
PVC false ceiling for balcony area with decorative lighting

## ELECTRICAL

Switches – Anchor/Legrand or equivalent modular switches  
Concealed copper wiring with M.C.B.  
Adequate electric points with TV & telephone points in living room, master bed room  
AC points in rooms except kitchen

## POWER

Provision of inverter

\*Alexa device not provided



TOWNSHIP CODENAME  
**PEGASUS**

VTP Altair is the newest cluster in Township Codename Pegasus, an oasis of calm that offers an unparalleled gated community living. Located in Pune East, the township extends over 150 acres and is chosen by over 2,200 families. Strategically located, it offers proximity to IT hubs and corporate parks like Eon IT Park and the World Trade Centre in Kharadi.

It is perhaps the only project in eastern Pune to boast of 5 professional sports coaching academies. The residents of VTP Altair will have access\* to all exclusive amenities offered at Township Codename Pegasus.

# Township Amenities Highlights:

5-star club

Badminton academy

Horse riding academy

Lawn tennis academy

Football academy

Swimming academy

Yoga and fitness centre

Spa

Health centre

Large landscaped zones

Creche

Strategic multiple entry and exit points

Well-planned internal driveways

Police station

Multi-tier security systems

Fire station

Bus stop

School



Note: The development of Township level amenities and internal infrastructure is the responsibility of the Master Township Developer, Solitaire Group. \*Township amenities will be chargeable.

# The Legacy Of A Game Changer

Disruption is in our DNA. The prospect of changing the game gets us going. Challenging the status quo, questioning the conventions, and always attempting something new. Today, this disruptive streak runs throughout the group thanks to our inceptor Mr. Vilaskumar Thanmal Palresha. VTP.

We broke through the monopoly cartels when we debuted as a cement dealership decades ago. We added new construction materials in our portfolio year after year. We didn't just have passion, but also, foresight. Making right decisions, seizing right opportunities, turning gambles into game-changers, we have emerged as one of the most formidable conglomerates in the real estate sector. We are proud to have cultivated a legacy that stands unrivalled since our inception in 1985.

VTP, the man and the group, are relentless in the pursuit to be the best at whatever goal we choose. Our cement and core construction materials business, VTP Materials, is the No.1 dealership in Maharashtra and amongst the top 5 across the country. Our infra development company, Viraj Projects, is one of the India's top names for construction contracting and government infra projects. VTP Realty, our real estate development company, is currently developing over 1.2 crore square feet. It has been ranked No.1 in Pune, in sales revenue, for 3 years in a row.

What started as a spark in a young entrepreneur's heart in Pune way back in the 80's, is today a very strong foundation of a group, that is at the forefront of the city's real estate development. We are very proud to have contributed to redefining Pune's skyline. We have set the cornerstone, quite literally, of most of the iconic structures of the city, in the last 36 years. We have contributed to the transformation of every pin code of Pune, as an end-to-end real estate group.

Never to rest on past laurels, we are most passionate about setting new benchmarks in every sector we work in. Not just to be the best, but also, be the innovators and the turnaround specialists. **We carry on the legacy that is VTP.**

# VTP REALTY A World Of Thoughtfulness

Fondly referred to as the "turnaround specialist" of Pune, VTP Realty is changing the way real estate industry operates. Years of sweat and goodwill has helped VTP Realty emerge as the leading real estate brand of the silicon valley of Maharashtra. VTP Realty has turned large stuck projects into success stories. The case in point being Township Codename Pegasus and Township Codename Blue Waters in East and West Pune.

We also benefit from the 35-years legacy of our group in the construction industry. We source 70 % of our construction materials from our group companies through backward integration, enabling us to deliver better quality homes in a shorter time span.

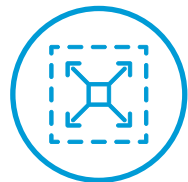
VTP Materials, a leading cement supplier in West India holds No. 1 position in Pune and No. 2 in Maharashtra.

Viraj Projects, also under the flagship of VTP Group is one of renowned infrastructure development and construction contracting companies and boasts of almost every national developer as their customer.

We have successfully established our leadership in every industry we operate in.



We don't worry  
about quality.  
Our pursuit of excellence  
takes care of it.



MLA advantage  
of bigger rooms



High build  
quality



Right priced  
products



Transparent  
approach



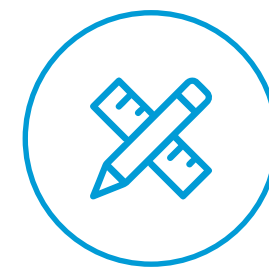
Consumer centric  
approach



Post sales &  
post possession  
approach



Higher return on investments and  
better rentals



## Better Design

Layouts that maximize the potential of each room offering more usable space inside a home, upgraded premium specifications, amenities for every family members and better value for money.



## Better Build

VTP Group has over 35 years of experience in construction material sourcing | Constructed close to 100 projects across the country Backward integration that allows easy access to the best construction materials | A pioneer to have used latest technology in India



## Better Care

No transfer fee | Community Building programs after possession Professionally-managed team facilitating leasing and resale of property | V-Care Customer Portal for single window communication with customers

Delivering  
lavish living experiences,  
not just homes.



**VTP URBAN NEST**  
1.5, 2 & 3 bedroom homes - Undri



**URBAN BALANCE**  
Premium 3 bed residences - Magarpatta Rd.



**URBAN SPACE**  
Premium 3.5 & 4.5 bed residences - NIBM



**VTP URBAN RISE**  
1.5 & 2 bedroom homes - Pisoli

**OTHER DELIVERED PROJECTS**

VTP URBAN NIRVANA - 2 & 3 BHK - KHARADI

VTP URBAN SOUL - 2BHK - KHARADI

VTP ONE - 1BHK - KHARADI

LANDMARK - RESIDENTIAL & COMMERCIAL - UNDRI

HOTEL CYPRESS - A LUXURY HOTEL IN KALYANI NAGAR

**SCHOOL PROJECTS DELIVERED**

VIBGYOR ROOTS AND RISE SCHOOL - CHINCHWAD

EDEN INTERNATIONAL SCHOOL - TALEGAON

VIBGYOR ROOTS AND RISE SCHOOL - WAGHOLI

CONCURRENTLY DEVELOPING IN 2021-22

10 MILLION SQ. FT.

It's great to be recognized by  
the most recognized



**NO. 1 BRAND ALWAYS  
RECOGNIZED BY LEADERS**



**BRAND OF THE YEAR**  
Global Real Estate Congress - 2021

**BEST REALTY BRAND**  
ET Edge, Times Of India Group - 2021

**DEVELOPER OF THE YEAR**  
CNN News 18 - 2020  
ET NOW Real Estate Awards - 2020  
Realty Plus Excellence Awards - 2020  
CIA WORLD Builders Awards - 2020  
IBE - India Property Awards - 2020

**CEO OF THE YEAR**  
**MR. SACHIN BHANDARI**  
CNN News 18 - 2020  
ET NOW Real Estate Awards - 2020  
Realty Plus Excellence Awards - PUNE - 2020  
Realty Plus Excellence Awards - WEST - 2020

**INNOVATIVE LEADERSHIP  
BUILD STRONG FOUNDATION**

**BUSINESS LEADER OF THE YEAR**  
**MR. SACHIN BHANDARI**  
ET NOW Real Estate Awards - 2020

**YOUNG ASIAN ENTREPRENEURS**  
**MR. BHUSHAN & NILESH PALRESHA**  
Asia One - 2020

**VISIONARY LEADER AWARD**  
**MR. SACHIN BHANDARI**  
Times Ascent & World HRD Congress - 2021  
under Innovative Leadership

**EARNED THE MONIKER  
"TURNAROUND" SPECIALISTS  
OF THE INDUSTRY**

**INTEGRATED TOWNSHIP PROJECT  
OF THE YEAR BLUE WATERS**  
Realty Plus Excellence Awards - 2020  
IBE - India Property Awards - 2020

**DEVELOPER OF THE YEAR  
TOWNSHIP**  
Realty Plus Excellence Awards - 2020

**THOUGHTFULLY CRAFTED PROJECTS**

**ICONIC PROJECT  
OF THE YEAR - VTP BEL AIR**  
Realty Plus Excellence Awards - 2020

**MID SEGMENT PROJECT  
OF THE YEAR - VTP PURVANCHAL**  
IBE - India Property Awards - 2020

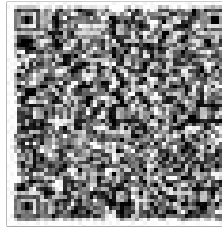
**RESIDENTIAL PROJECT  
OF THE YEAR - VTP LEONARA**  
Realty Plus Excellence Awards - 2020

**COMMERCIAL PROJECT  
OF THE YEAR - KP SQUARE**  
IBE - India Property Awards - 2020

**GREAT BRANDS ARE BUILT BY HAPPY CUSTOMERS & EMPLOYEES**

**NATIONAL BEST EMPLOYER BRAND** ET NOW HR Awards by World HRD Congress - 2020

Recent awards for more visit [www.vtprealty.in/awards](http://www.vtprealty.in/awards)



**SITE ADDRESS : NEXT TO YOO VILLAS, NEW KHARADI, PUNE - 412 207**

**MahaRERA Registration No.: P52100030521 available at [www.maharera.mahaonline.gov.in](http://www.maharera.mahaonline.gov.in)**

Disclaimer: The contents including in this brochure displayed/provided are solely for informational purpose only. This material does not constitute an offer and / or contract of any type between the developer/promoter/owner and the recipient, all intending purchaser/s in this project shall be governed by the terms and conditions envisaged under the Real Estate (Regulation and Development) Act 2016. Nothing in the brochure should be misconstrued as booking, selling or an offer for sale or invitation to purchase a unit in any project by the company/firm. The company/firm is not responsible for the consequences of any action taken by the viewer relying on such material/information of the ad. All the content in the ad is copyrighted material owned by VTP REALTY and no part of the content can be used or extracted without prior consent of the brand. Logo of VTP Realty is copyright and owned by VTP Realty.