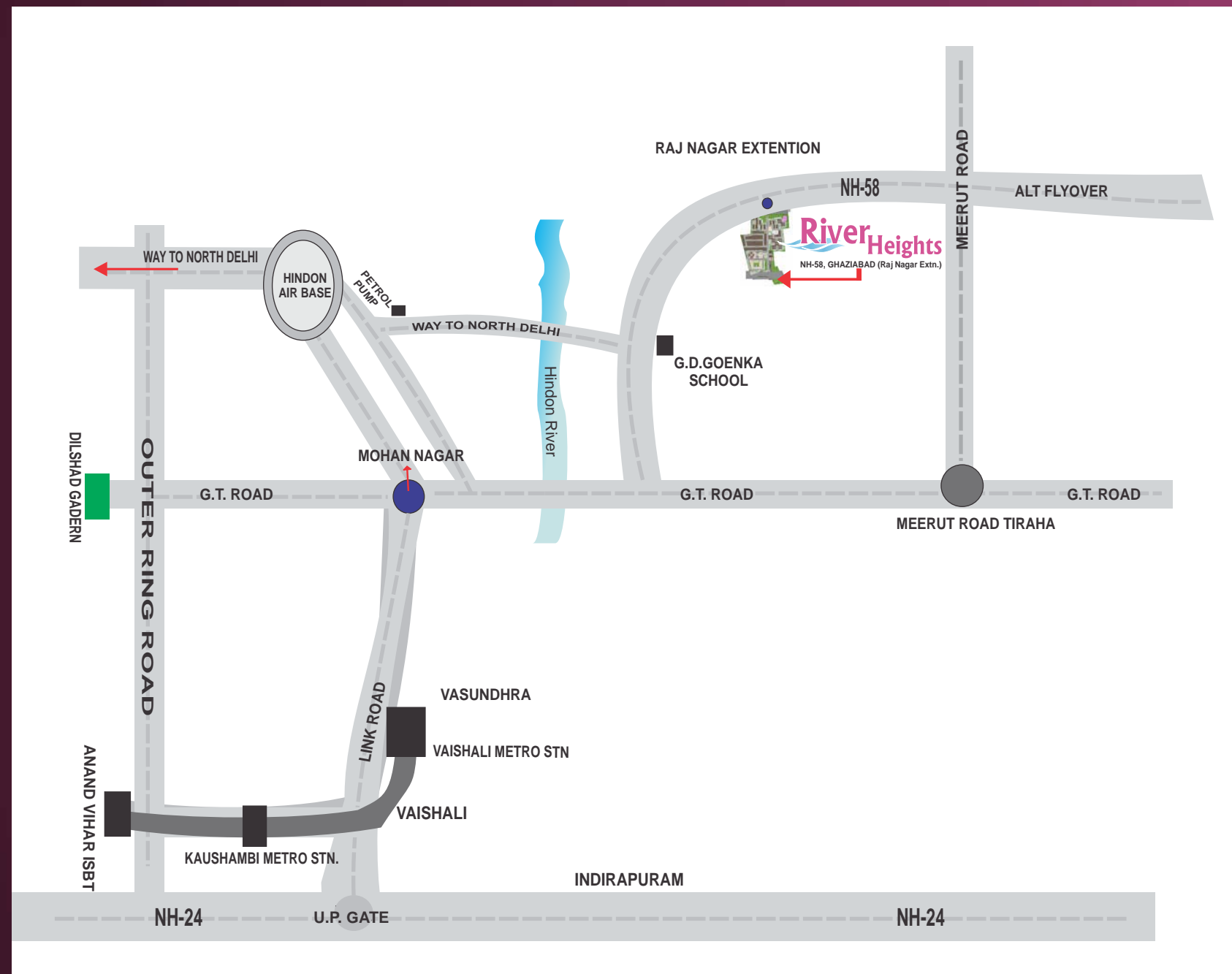


## Location Map



Disclaimer Note: All specifications, designs, layout, images, conditions are only indicative and some of these can be changed at the discretion of the builder, these are purely conceptual and constitute no legal offerings.



**LandCraft**  
An ISO 9001:2000 Company



Live where more than 650 families are already living...

Actual Photo

**River Heights**  
NH-58, GHAZIABAD (Raj Nagar Extn.)

Rarely does opportunity come twice along with the choice to own the home of your dreams. Luckily for you, LandCraft, one of the most trusted names in the Indian real estate sector is launching three new towers at its distinguished River Heights project. Packed with luxurious amenities and provisions, residential units in these towers are state-of-the-art creations in every way – right from the aesthetics to space planning to utilization of natural light. One look is all it takes to fall in love with them!

homes that you will  
love at first sight



**River Heights**  
NH-58, GHAZIABAD (Raj Nagar Extn.)



Strategically located at Raj Nagar Extension, LandCraft River Heights apartments offer a magnificent view of pristine greens while ensuring close proximity to Delhi and well connected with NH58.

accessibility  
the defining factor



# amenities

- Prime location on proposed 6 lane highway
- Schools, hospitals and malls in the vicinity
- Swimming pool
- Ample parking space
- Landscaped garden
- State-of-the-art clubhouse
- 24 hour power back-up
- 24 hour water supply
- 24x7 security

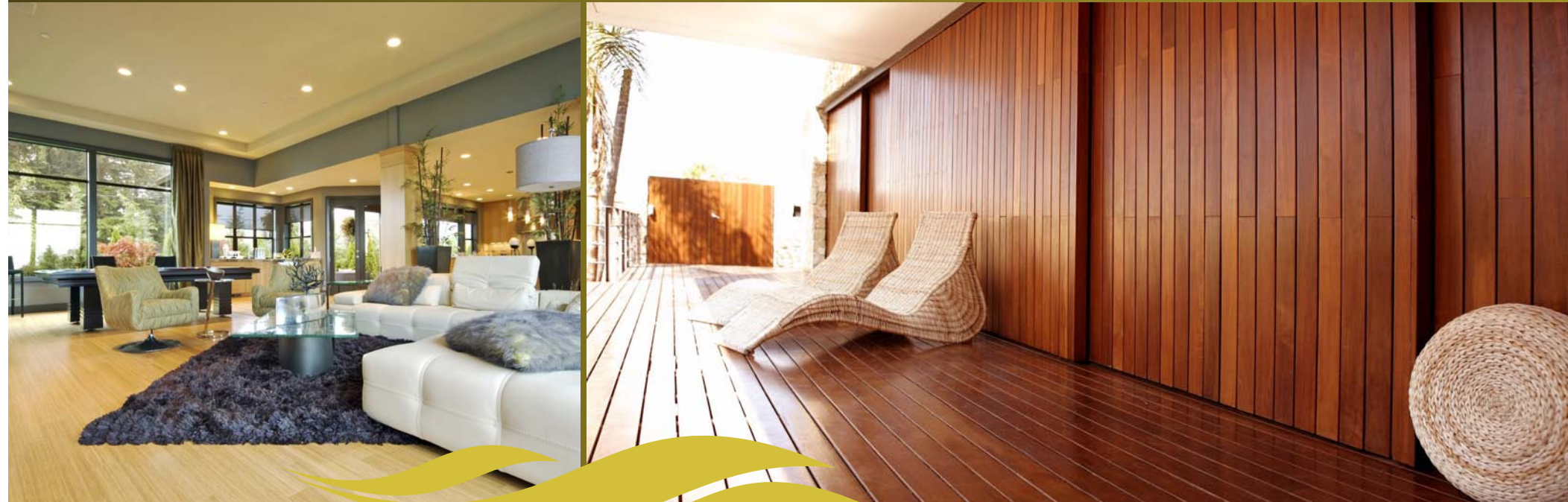


**DOORS AND WINDOWS**

Aluminum windows  
Skin moulded internal doors.  
Flush doors in washrooms.  
Alluminium / UPVC Doors in balcony.

**WASHROOMS**

Ceramic tiles on walls up to door level  
Branded sanitary ware with EWC , washbasin and CP fittings



**STRUCTURE**

Earthquake resistant RCC framed structure certified by IIT

**EXTERNAL FINISH**

Excellent weather proof finish in pleasant shades.

**FLOORING**

Vitrified tiles in Drawing & Bedrooms.  
Vitrified / Ceramics tiles in Kitchen  
Ceramic tiles in Bathrooms and Balconies.

**WALLS & CEILING FINISH KITCHEN**

Finished walls & Ceiling with OBD in pleasing shades.  
Granite working top with stainless steel sink & CP fittings.  
Ceramic tiles upto 7 ft balance area OBD up to false ceiling.

specifications

**ELECTRICAL**

Copper wire in PVC conduits with MCB supported circuits and adequate number of points and light points in ceiling.

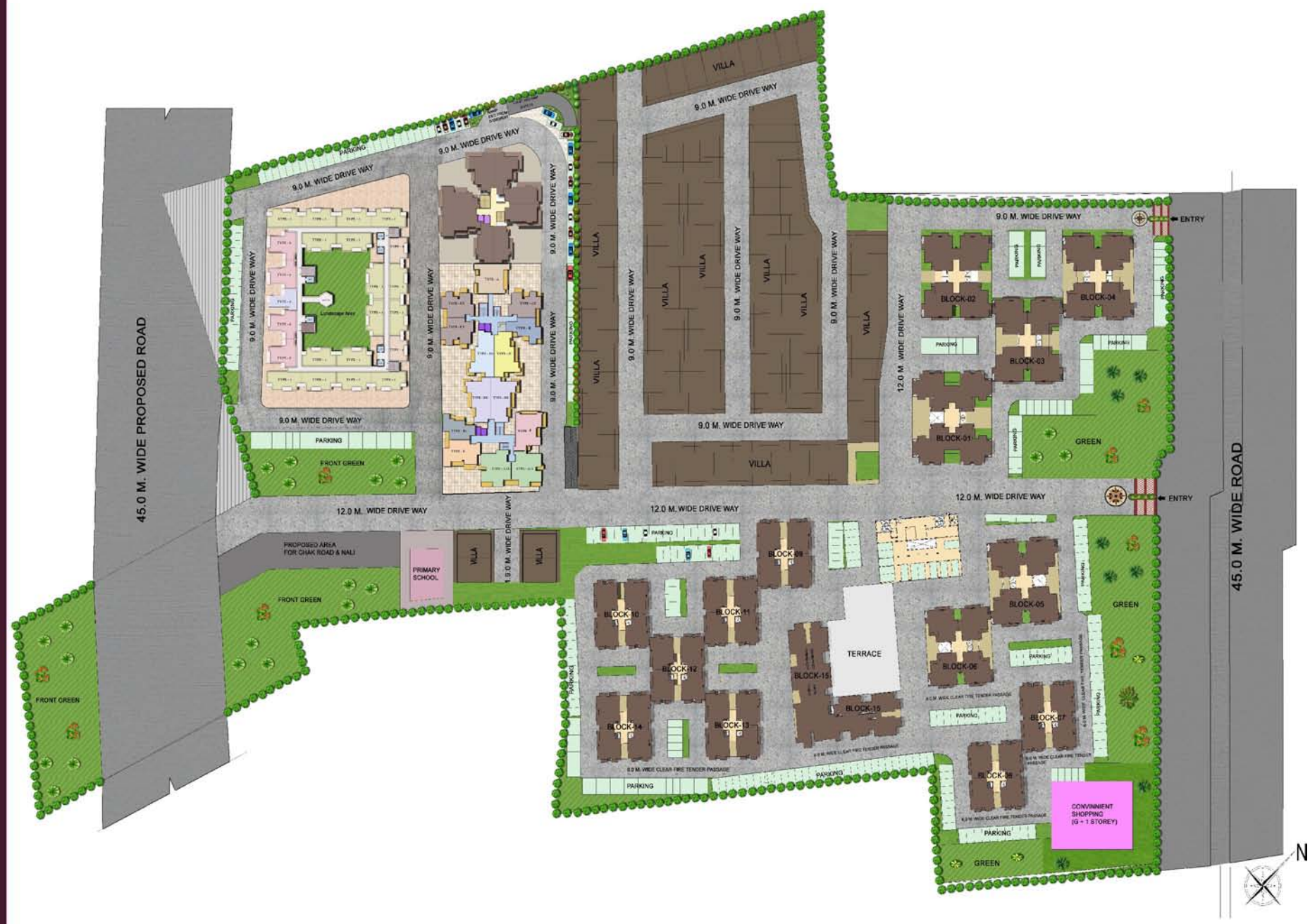
**WATER SUPPLY**

Underground and overhead water tanks with pumps for 24 hours uninterrupted water supply.

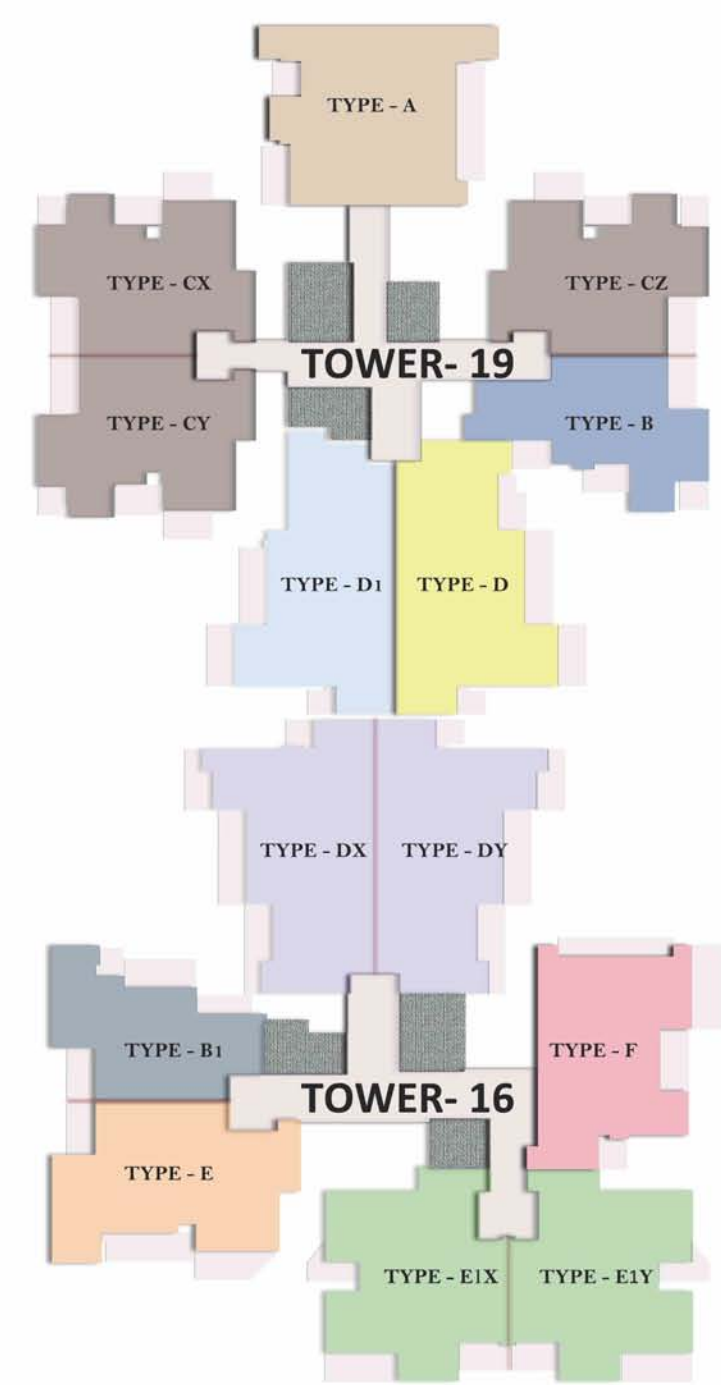


# River Heights

NH-58, GHAZIABAD (Raj Nagar Extn.)



Master Site Plan



LEGEND

TYPE - A	3BHK+3T+PUJA (SALEABLE AREA - 1630 Sq.ft.)
TYPE - CX, CY, CZ	3BHK+2T (SALEABLE AREA - 1340 Sq.ft.)
TYPE - B	2BHK+2T (SALEABLE AREA - 1135 Sq.ft.)
TYPE - D1	3BHK+2T (SALEABLE AREA - 1590 Sq.ft.)
TYPE - D	3BHK+2T (SALEABLE AREA - 1640 Sq.ft.)
TYPE - DX, DY	3BHK+2T (SALEABLE AREA - 1665 Sq.ft.)
TYPE - B1	2BHK+2T (SALEABLE AREA - 1115 Sq.ft.)
TYPE - F	3BHK+2T (SALEABLE AREA - 1385 Sq.ft.)
TYPE - E	3BHK+2T (SALEABLE AREA - 1530 Sq.ft.)
TYPE - E1X, E1Y	3BHK+2T (SALEABLE AREA - 1450 Sq.ft.)

CLUSTER PLAN

1 Sqr Mtr = 10.764 Sqr. Ft.(approx)

all information,conditions are only indicative & some of them can be changed at the discretion of builder/architect,these are conceptual & constitute no legal offerings

all information,conditions are only indicative & some of them can be changed at the discretion of builder/architect,these are conceptual & constitute no legal offerings

# Tower 17

2nd Floor Plan



LEGENDS

- TYPE - 1 2BHK+2T(SALEABLE AREA - 976 Sq.ft)
- TYPE - 2 2BHK+2T(SALEABLE AREA - 1020 Sq.ft)
- TYPE - 3 1BHK+1T(SALEABLE AREA - 718 Sq.ft)
- TYPE - 4 1BHK+1T(SALEABLE AREA - 720 Sq.ft)

Typical Floor Plan  
3rd & 5th to 15th Floor



LEGENDS

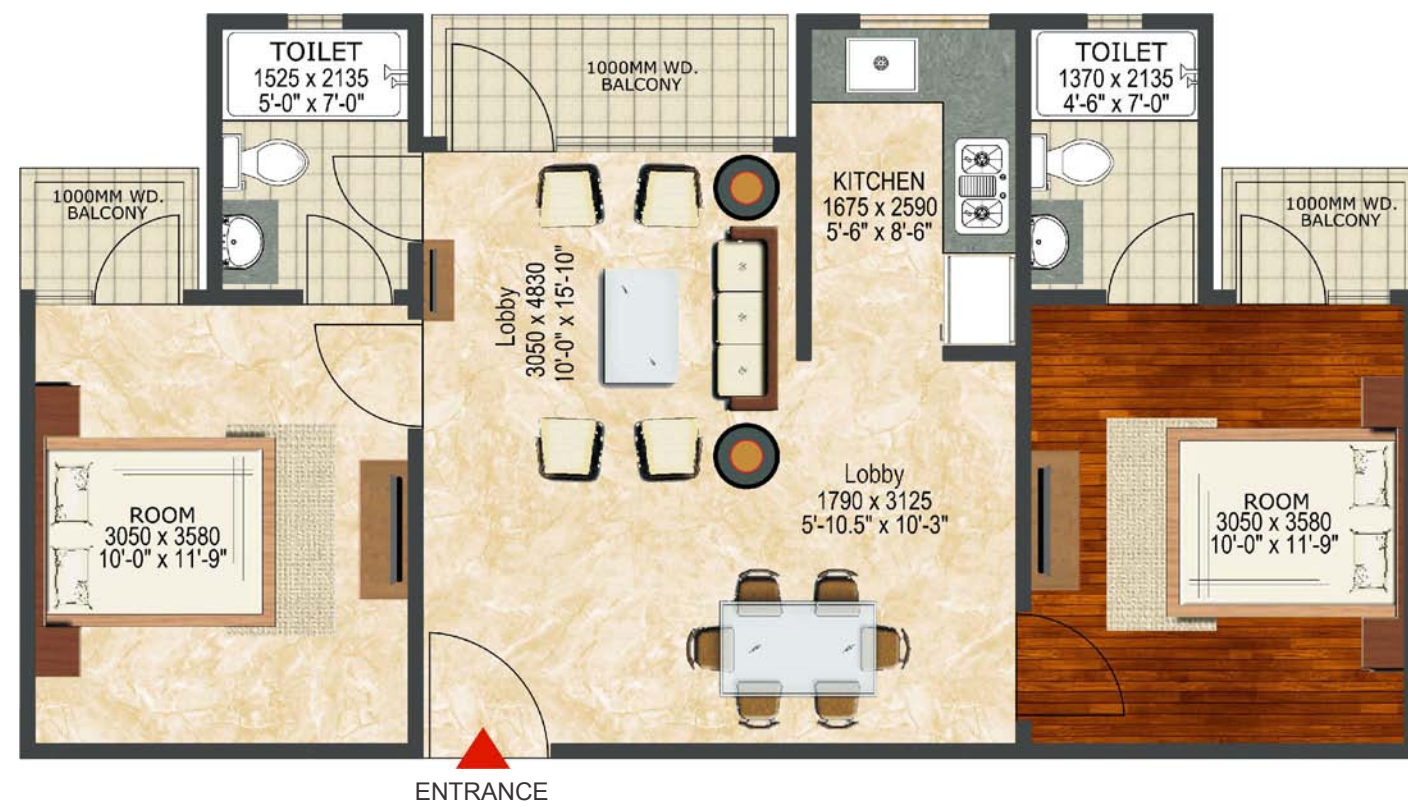
- TYPE - 1 2BHK+2T(SALEABLE AREA - 976 Sq.ft)
- TYPE - 2 2BHK+2T(SALEABLE AREA - 1020 Sq.ft)
- TYPE - 3 1BHK+1T(SALEABLE AREA - 718 Sq.ft)
- TYPE - 4 1BHK+1T(SALEABLE AREA - 720 Sq.ft)

4th Floor Plan



LEGENDS

- TYPE - 1 2BHK+2T(SALEABLE AREA - 976 Sq.ft)
- TYPE - 2 2BHK+2T(SALEABLE AREA - 1020 Sq.ft)
- TYPE - 4 1BHK+1T(SALEABLE AREA - 720 Sq.ft)



**Type -1**

Saleable Area = 976 Sq. Ft.  
2 BHK+ 2 T

1 Sqr Mtr = 10.764 Sqr. Ft.(appx)



**Type - 2**

Saleable Area = 1020 Sq. Ft.  
2 BHK + 2 T

1 Sqr Mtr = 10.764 Sqr. Ft.(appx)

floor plans

floor plans

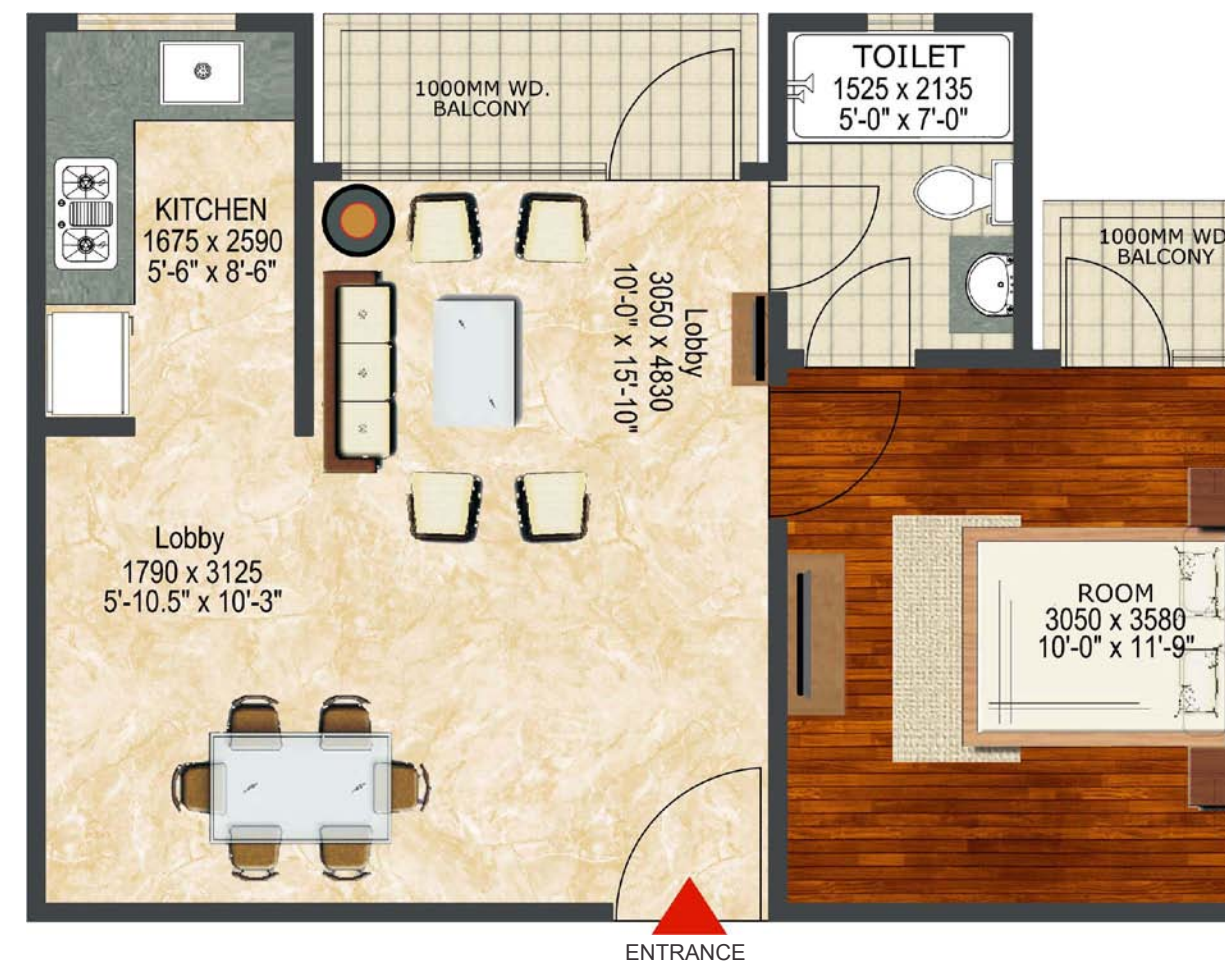




Type - 3

Saleable Area = 718 Sq. Ft.  
1 BHK + 1T

1 Sqr Mtr = 10.764 Sqr. Ft.(approx)



Type - 4

Saleable Area = 720 Sq. Ft.  
1 BHK + 1T

1 Sqr Mtr = 10.764 Sqr. Ft.(approx)

floor plans

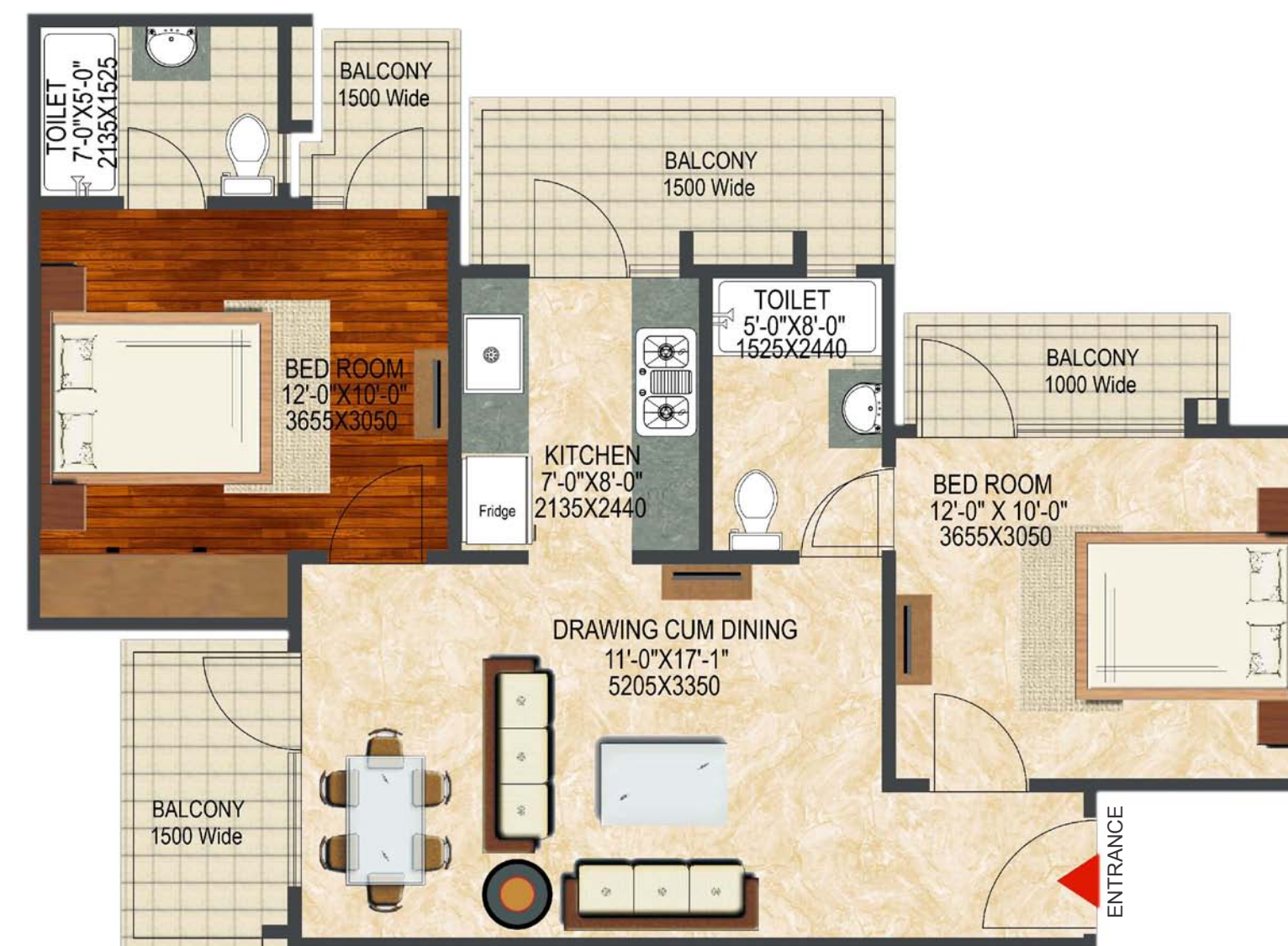
floor plans



**Type - B on 15<sup>th</sup> Floor**

Saleable Area = 1035 Sq. Ft.  
2 BHK + 2 T

1 Sqr Mtr = 10.764 Sqr. Ft.(approx)



**Type - B1**

Saleable Area = 1115 Sq. Ft.  
2 BHK + 2 T

1 Sqr Mtr = 10.764 Sqr. Ft.(approx)

floor plans

floor plans

floor plans



**Type - B**

Saleable Area = 1135 Sq. Ft.  
2 BHK + 2 T

1 Sqr Mtr = 10.764 Sqr. Ft.(appx)



**Type - Cz on 15<sup>th</sup> Floor**

Saleable Area = 1240 Sq. Ft.  
3 BHK + 2 T

1 Sqr Mtr = 10.764 Sqr. Ft.(appx)

floor plans



**Type - Cx, Cy & Cz**

Saleable Area = 1340 Sq. Ft.  
3 BHK + 2 T

1 Sqr Mtr = 10.764 Sqr. Ft.(appx)



**Type - F on 15<sup>th</sup> Floor**

Saleable Area = 1385 Sq. Ft.  
3 BHK + 2 T

1 Sqr Mtr = 10.764 Sqr. Ft.(appx)

floor plans

floor plans



**Type - E1y on 15<sup>th</sup> Floor**  
Saleable Area = 1430 Sq. Ft.  
3 BHK + 2 T

1 Sqr Mtr = 10.764 Sqr. Ft.(appx)



**Type - E1x & E1y**  
Saleable Area = 1450 Sq. Ft.  
3 BHK + 2 T

1 Sqr Mtr = 10.764 Sqr. Ft.(appx)

floor plans

floor plans

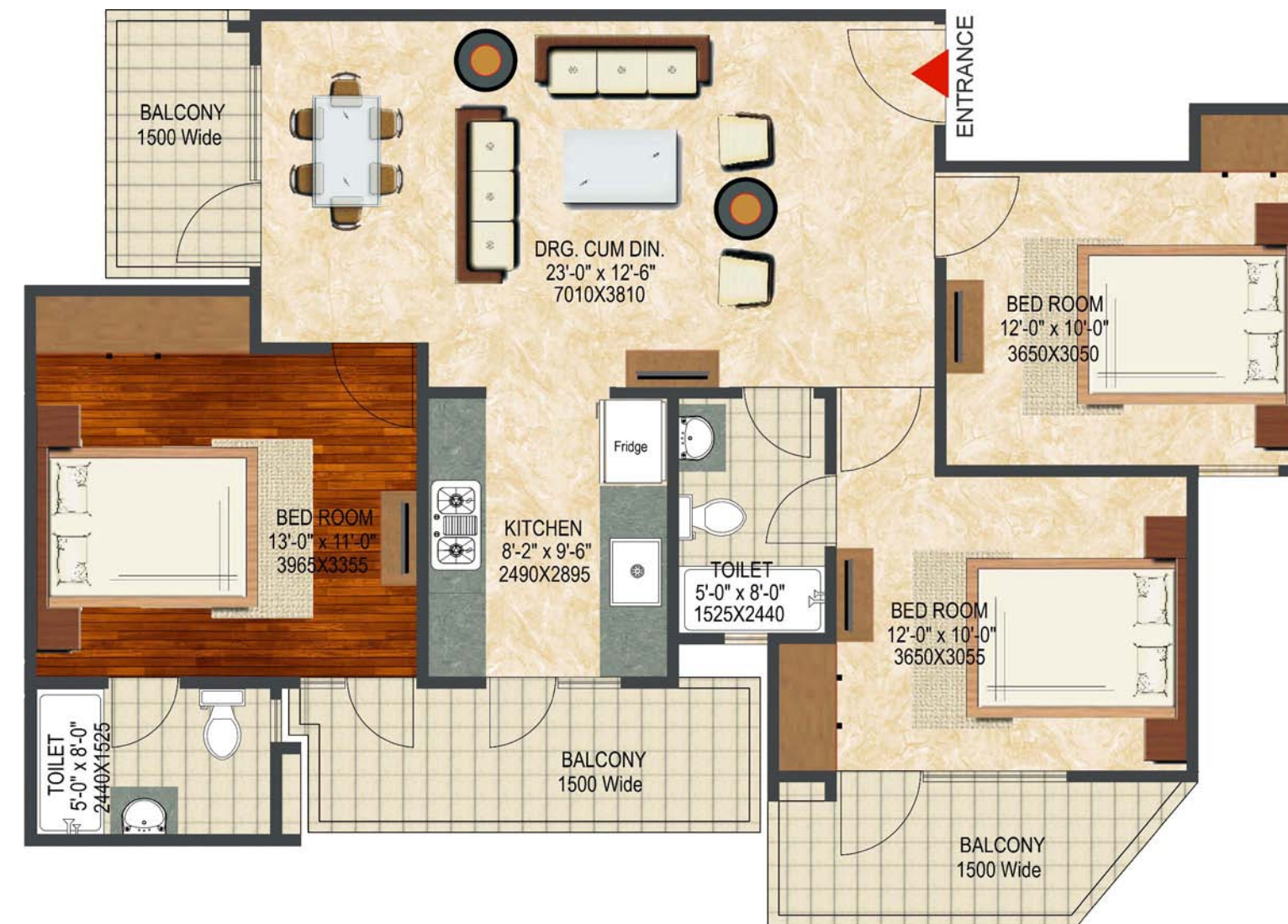


Type - F

Saleable Area = 1480 Sq. Ft.  
3 BHK + 2 T

1 Sqr Mtr = 10.764 Sqr. Ft. (approx)

all information, conditions are only indicative & some of them can be changed at the discretion of builder/architect, these are conceptual & constitute no legal offerings



Type - E

Saleable Area = 1530 Sq. Ft.  
3 BHK + 2 T

1 Sqr Mtr = 10.764 Sqr. Ft. (approx)

all information, conditions are only indicative & some of them can be changed at the discretion of builder/architect, these are conceptual & constitute no legal offerings



**Type - D1**

Saleable Area = 1590 Sq. Ft.  
3 BHK + 2 T

1 Sqr Mtr = 10.764 Sqr. Ft.(appx)



**Type - A**

Saleable Area = 1630 Sq. Ft.  
3 BHK + 3 T + Puja

1 Sqr Mtr = 10.764 Sqr. Ft.(appx)

floor plans

floor plans



**Type - D**

Saleable Area = 1640 Sq. Ft.  
3 BHK + 2 T

1 Sqr Mtr = 10.764 Sqr. Ft.(appx)

all information, conditions are only indicative & some of them can be changed at the discretion of builder/architect, these are conceptual & constitute no legal offerings



**Type - Dx & Dy**

Saleable Area = 1665 Sq. Ft.  
3 BHK + 3 T

1 Sqr Mtr = 10.764 Sqr. Ft.(appx)

all information, conditions are only indicative & some of them can be changed at the discretion of builder/architect, these are conceptual & constitute no legal offerings