



SALASAR

Exotica-I

RERA NO : P51700025546



REDEFINE YOUR *Luxury*

SALASAR EXOTICA

Choose an exotic life in your own city, and celebrate every day of your life like a vacation. A home like Salasar Exotica presents you with great experiences just around the corner and an architecture specially designed for a high stand of living. Say "yes" to a life that is urban outside & peaceful inside. The residency enriches you with convenience, entertainment and endless luxuries. With Salasar Exotica, choose a home where you can work, play, breathe peacefully and make unforgettable memories for lifetime. The Location of Salasar Exotica is a commuter's dream and a father's security for a family. With best brands, entertainments, malls, supermarket in the corner & variants of gardens and club house built within, gift your family a blissful lifestyle in the heart of the city.

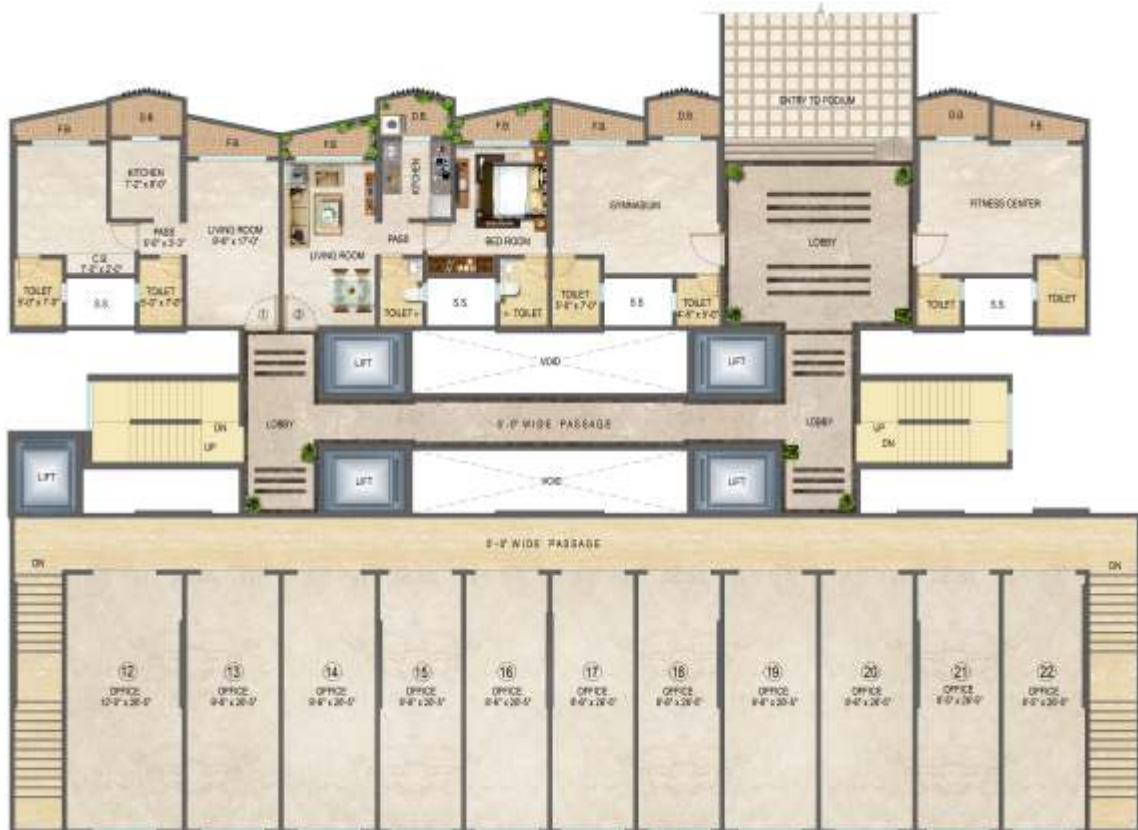




*Artist Impression. For illustrative purposes only.



GROUND FLOOR - COMMERCIAL SHOPS



FIRST FLOOR - COMMERCIAL SHOPS



TYPICAL FLOOR PLAN



ISOMETRIC VIEW

REDEFINE YOUR *Amenities*



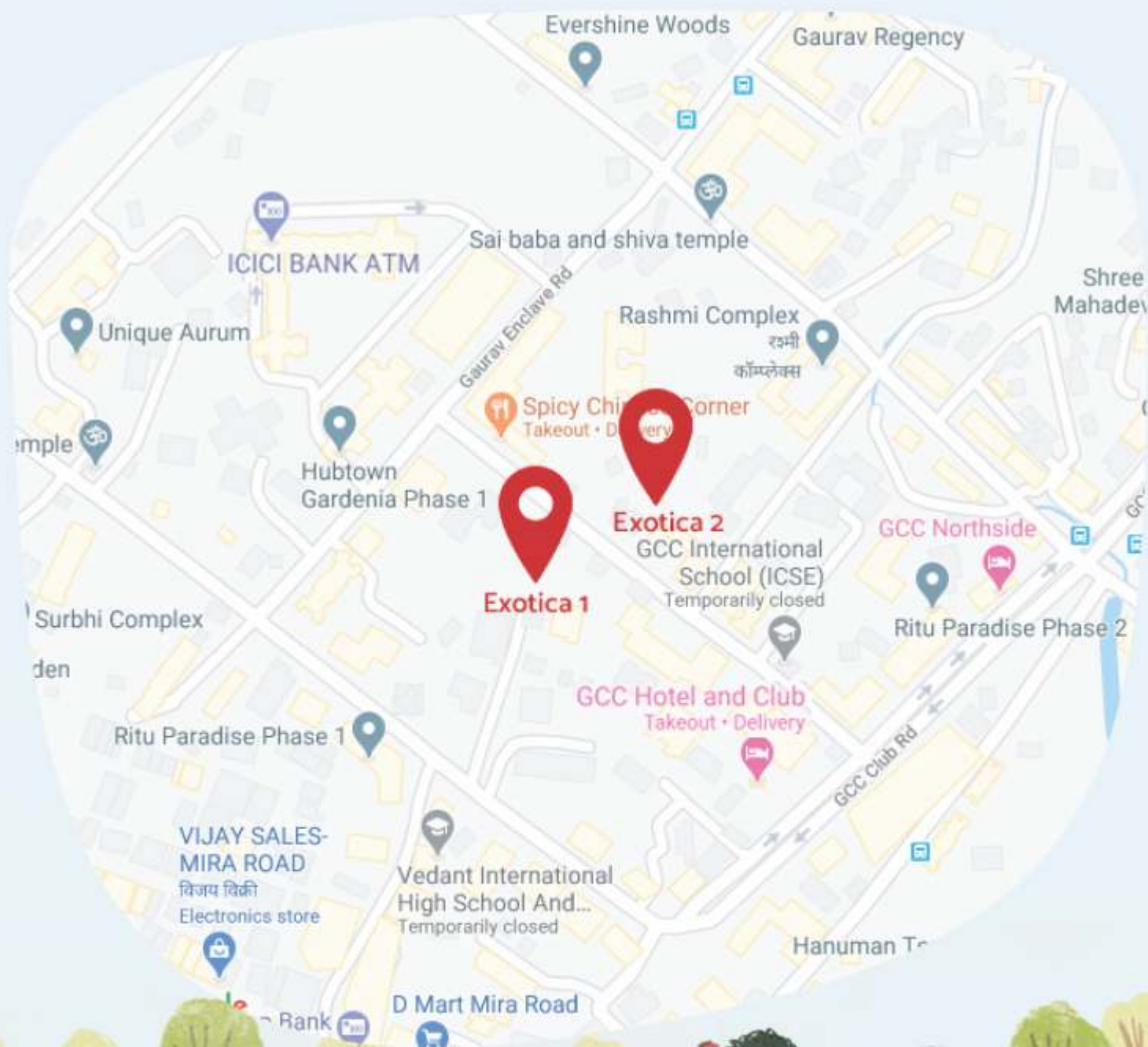
- Podium parking Facility • Stilt parking facility • Grand entrance with fountain
- World Class Landscape garden & playing area • High End Security System
- Lush landscape Podium Garden • High Speed Elevators • Advanced Fire-Fighting System
- Video Door Phone & Integrated Alarm System • Generator Back-up for Lift
- Rain Water Harvesting System & Sewage Water Harvesting Plant



- Cable & Television points in Living Room & Bedrooms • Concealed Copper Wiring with Modular Switches
- Provision for Air-Conditioning • Selected Ceramic / Marbles Tiling for Bathroom Flooring
- Conveniently Located Wash Basin Counters • Vitrified Tiles that are up to 2 feet high above
- Kitchen Platform • Granite Kitchen Platform with Stainless Steel Sink & Drain Board
- Anodised / SDF Aluminium sliding Windows • Concealed Plumbing • Branded C.P. Fittings
- Branded Electrical Switched • Laminated Flush Doors • Modular Kitchen

*Artist Impression. For illustrative purposes only.

Location





SALASAR
Exotica-I



Marketed by :



Salasar Associates

Corporate Office : 4th Floor, Maxus Mall, Bhayandar W, Thane-401101

PROJECT RERA REGISTRATION NO : P51700025546

Site Address :

Next To GCC North Lawn,
Behind GCC Club, Mira Road (E)
Thane - 401107.

Sales Office :

Office No. 26, Rose Wood Tower,
Hub Town, Behind GCC,
Mira Road (E), Mumbai - 401107.

NIRMAL MALPANI : +91 97020 88477 | MAHESH SONI : +91 9699976962
Enquiry : 9054 000 555 | nirmals.salasar@gmail.com

PROJECT ARCHITECT
ANISH & ASSOCIATES

R.C.C. CONSULTANT
RAJESH DUBEY

CONSULTING ARCHITECT
TUSHAR SALI & ASSOCIATES

MEP CONSULTANTS
URJA CONSULTANTS PVT LTD

This information contained in the brochure indicative in the kind of development that is proposed. It is prepared in good faith and is for guidance only. It does not constitute part of an offer or contract. Subject to the approval of the authorities or in the interest of the continuing improvement, the developers reserve the right to alter the layout, plans, specification or features without prior notice or obligation.