



# AXIS PARK WEST



*We Are The Future Of Your Luxury*

Axis Park West is a place where your comforts are in harmony with excellence. We hold the vision to offer you a balance between reasonable and premium options, bringing you homes that captivate your hearts.

Located amidst the cityscapes of Hosapete, with exceptional connectivity to Bellary, Hampi, and other parts of the state, Axis Park West opens up the gates for a luxurious living exploring the idea of limitless possibilities.

Hampi



## PROJECT HIGHLIGHTS

- All Vastu Compliant
- Terrace swimming pool
- Women Kitty Zone
- Senior Citizen Zone
- 24hrs Security
- Children's play arena
- Handicap Accessibility Service
- 3 passenger and 3 Cargo Lifts



- ◆ 24 Flats Per Floor
- ◆ 3 Clusters. 8X3 - 24 Flats
- ◆ Total 104 Flats
- ◆ Area ranging from 1308.0 sft. to 2309.0 sft.
- ◆ 2 BHK, 3 BHK and 4 BHK

Experience a never-imagined luxury and tranquility with Axis Park West. Well-built construction with exquisitely crafted spaces that takes you all the way to your own paradise. Located conveniently in the suburb of Hosapete, owning a flat here gives you the elite access to reach every corner of the city swiftly.



Luxury living  
*Redefined.*

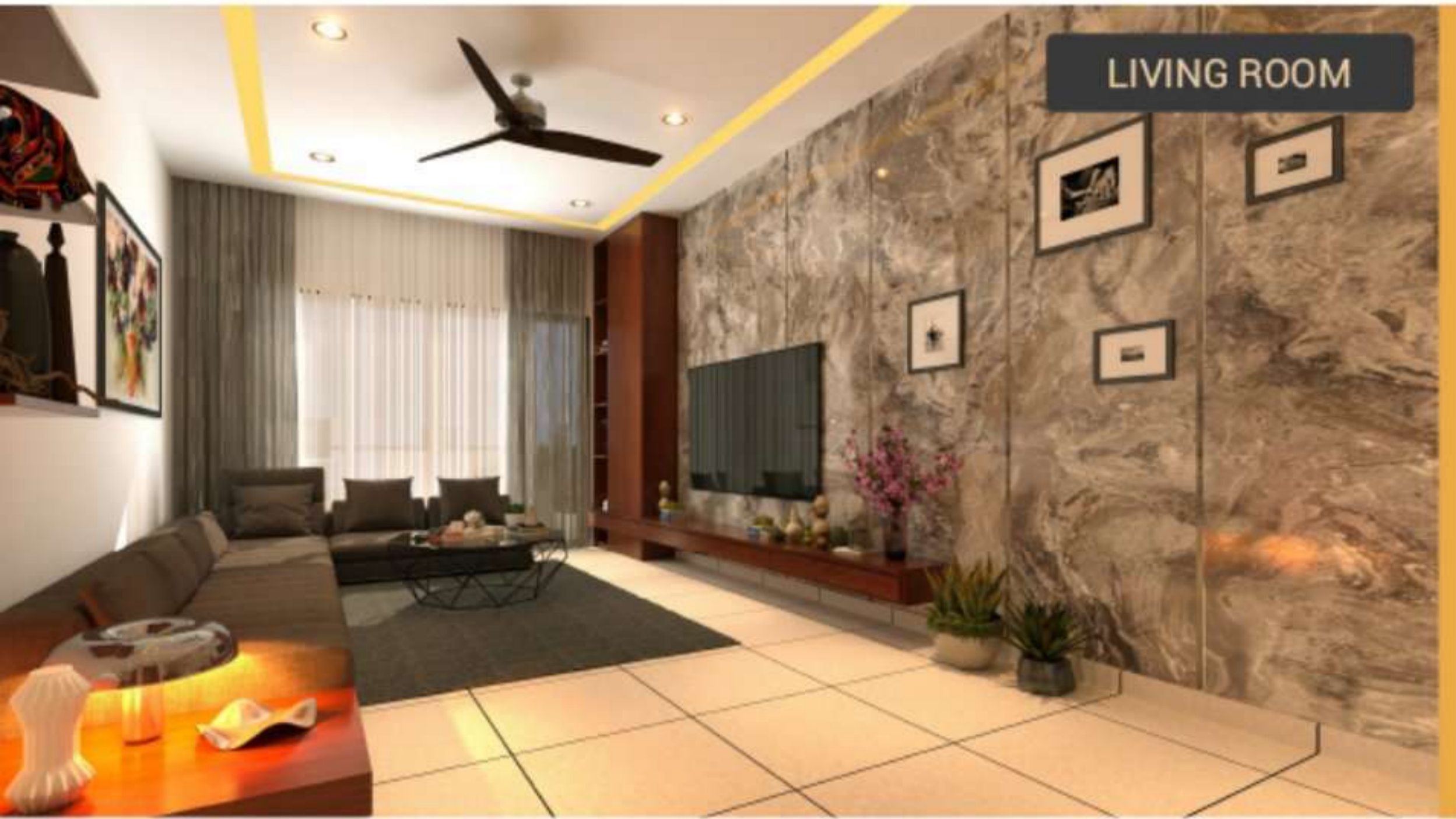




# Roof Top Pool



LIVING ROOM

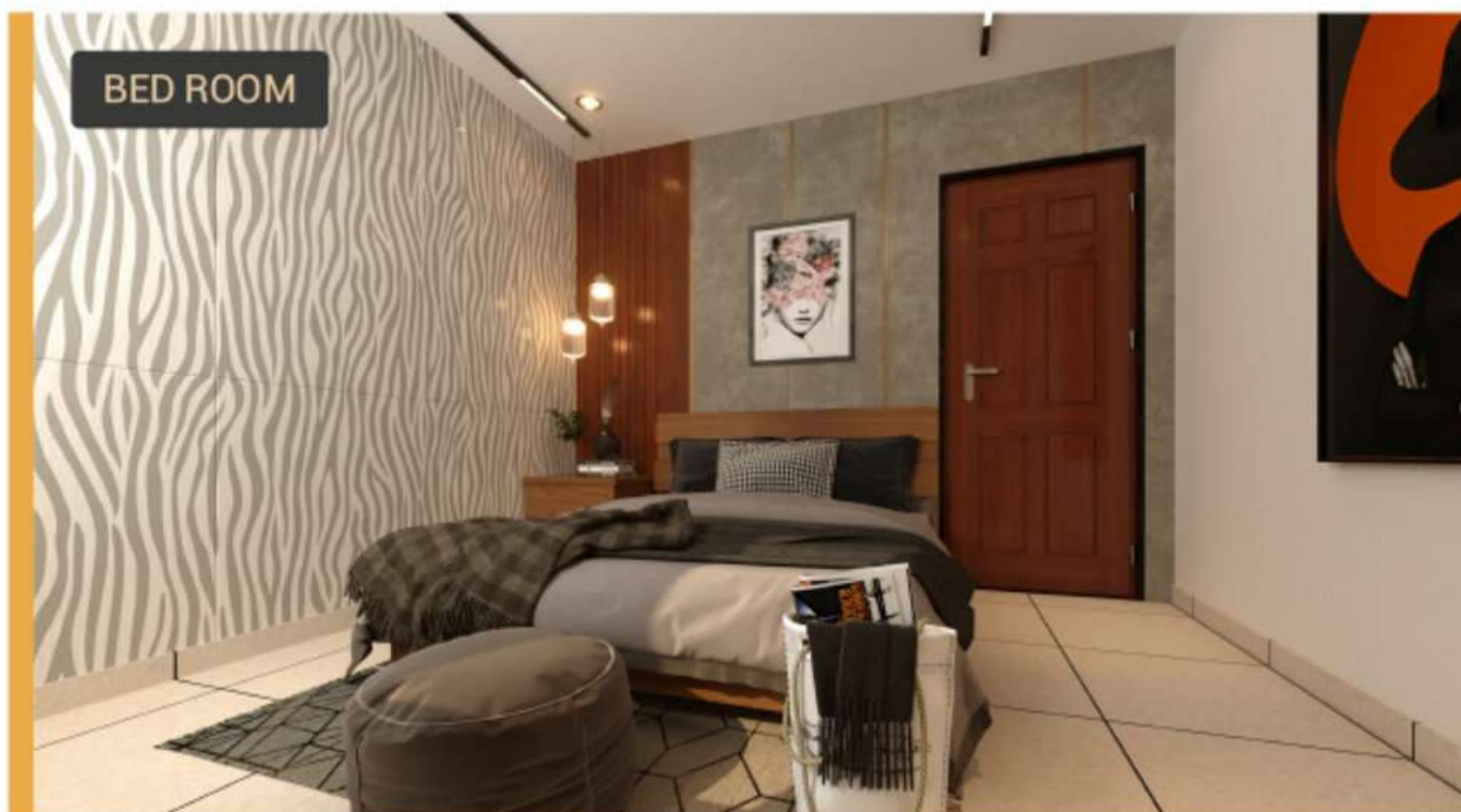
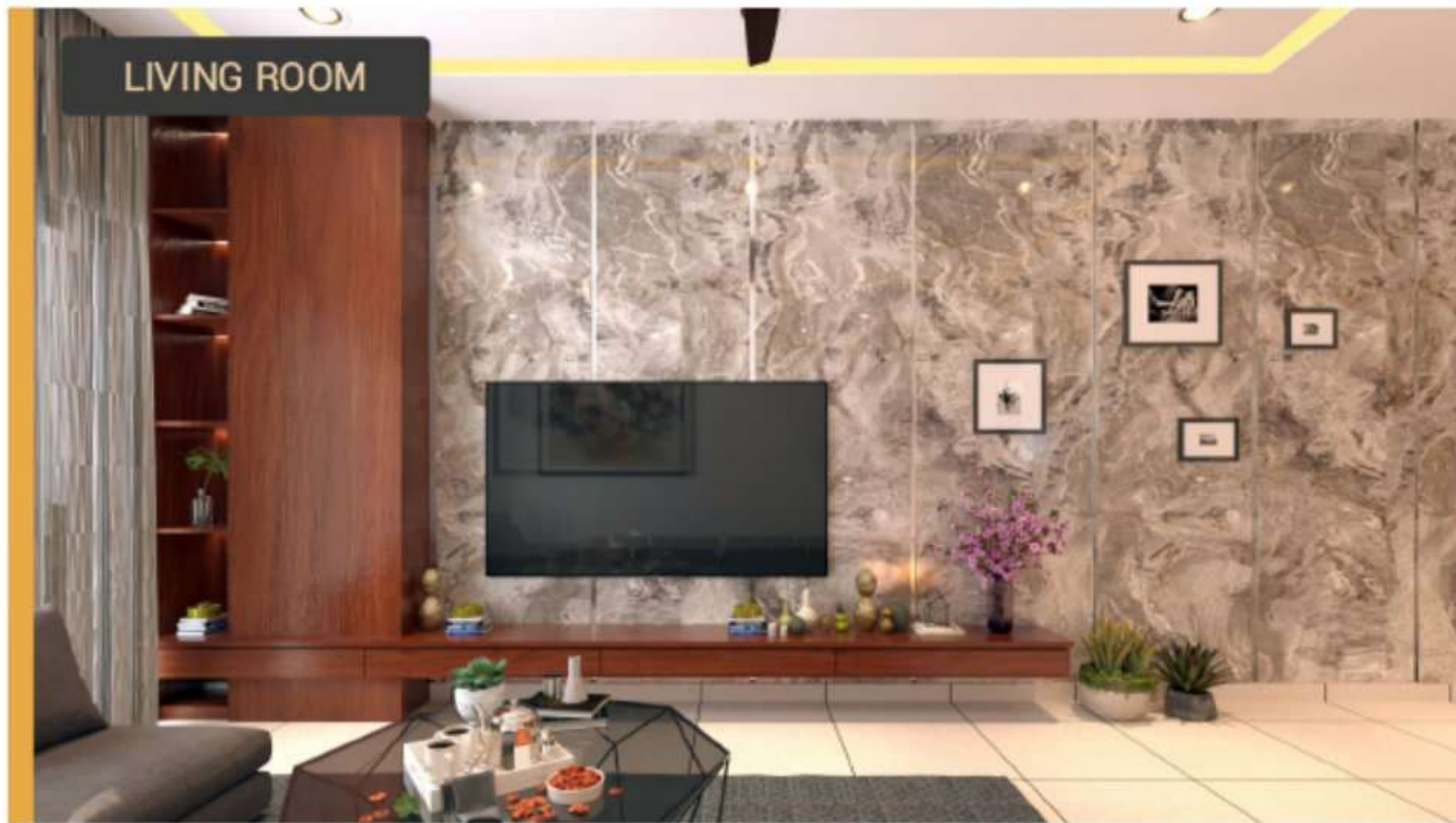


DINING

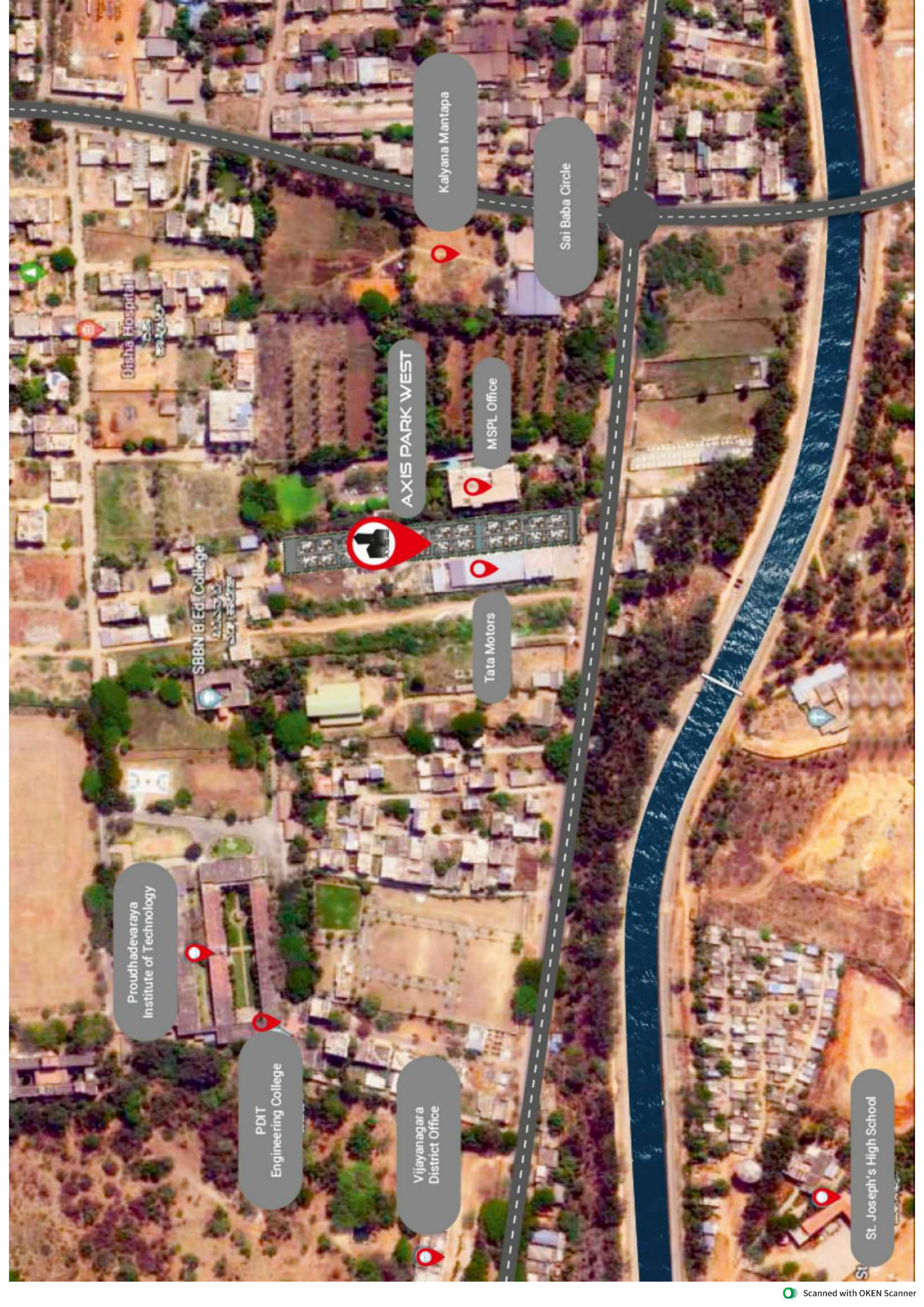


MASTER BEDROOM









Proudhadevaraya  
Institute of Technology

PDIT  
Engineering College

SBBN (B.Ed) College

Disha Hospital

AXIS PARK WEST

MSPL Office

Tata Motors

Vijayanagara  
District Office

Kalyana Mantapa

Sai Baba Circle

St. Joseph's High School



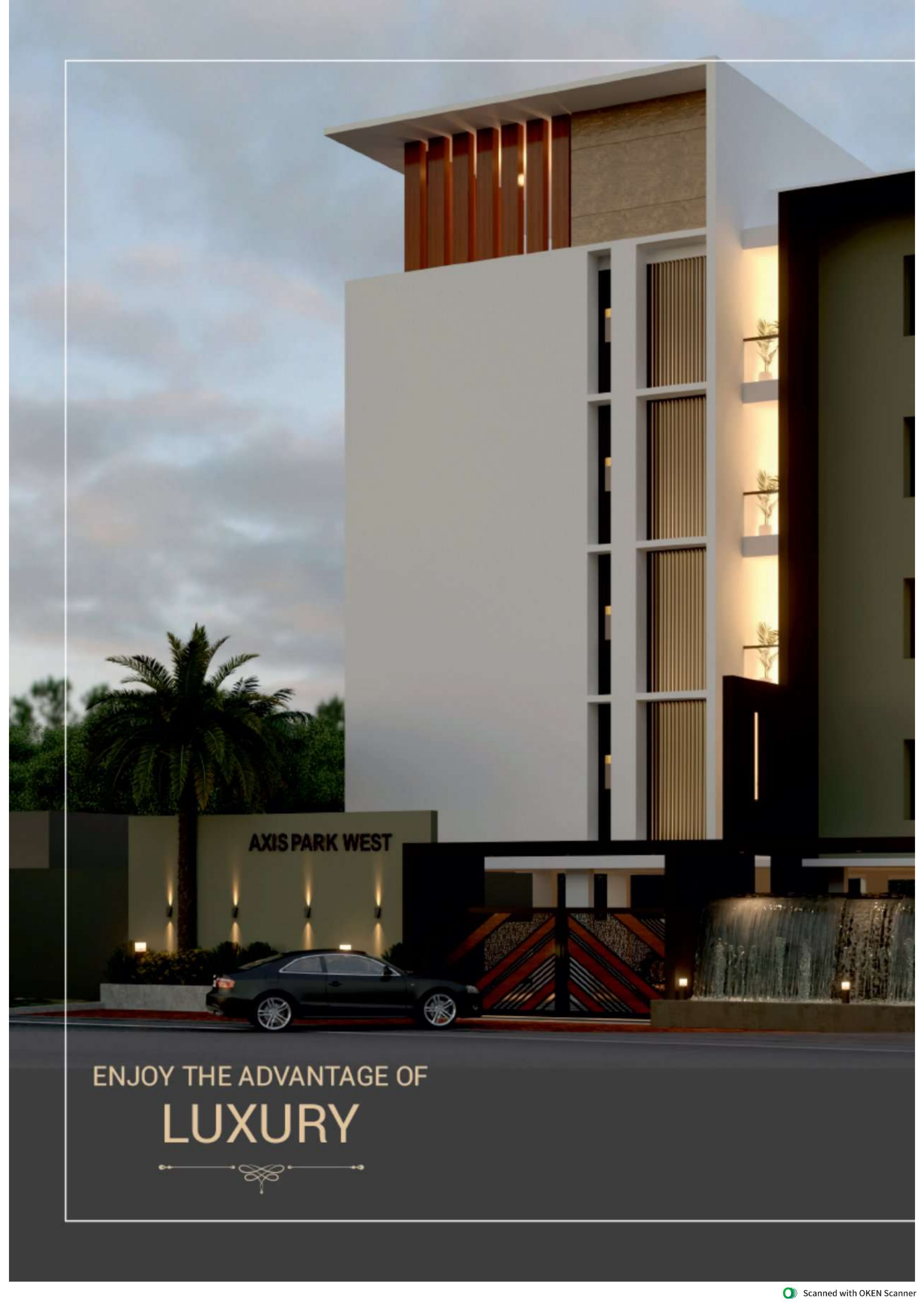
Lobby & Parking Area

*Unrivaled safety no*



*meets optimum luxury*





AXIS PARK WEST

ENJOY THE ADVANTAGE OF  
**LUXURY**



*Right time  
Right Investment*

AXIS PARK WEST



Axis Park West at Hospet, Karnataka, is the perfect amalgamation of luxury and comfort you're looking for. Scaling from luxurious apartments that cater to your necessities for an effortless tomorrow, Axis Park West is an elite compound that houses luxury, affordability, and amazingness right together. Get the best with the ideal investment for a secured future.

*Relive the dream of eliteness.*  
**Flats that flatter everyone.**

**FLAT NO - 08, 16 & 24**



➤N



FLAT NO - 5, 13 & 21



➤ N





FLAT NO - 04, 12 & 20



> N



FLAT NO - 1, 9 & 17



> N



**FLAT NO - 2, 10 & 18**



FLAT NO - 3, 11 & 19



N ←



**FLAT NO - 6, 14 & 22**



N ←



FLAT NO - 7, 15 & 23



N



# Specifications

## STRUCTURE

- R.C.C. FRAMED STRUCTURE  
R.C.C. framed structure to withstand wind & seismic loads

### SUPER STRUCTURE

- 9" thick red bricks for external walls & 4" thick walls,  
Fe 550 grade steel

## PLASTERING

### INTERNAL

- Single coat cement plaster with smooth finishing

### EXTERNAL

- Double coat sand faced cement plastering

## PAINTING

### EXTERNAL

- 2 Coats of external emulsion paint or equivalent

### INTERNAL

- Wall putty + 1 coat of primer + 2 Coats of Premium emulsion paint

### PARKING AREA

- Waterproof cement paint with base coat of primer

## KITCHEN

- Granite platform top
- Ceramic / Glazed tiles above platform 2'6" height
- SS sink
- Gas pipeline provision from utility
- Provision for R.O. Purifier

## FLOORING

### LIVING / DINING / KITCHEN

- 0.8 x 0.8 vitrified flooring

### MASTER BEDROOM

- Vitrified 0.8 x 0.8 wooden floor pattern or 0.8x0.8 vitrified tile

### BEDROOMS

- Vitrified tiles

### ALL TOILETS

- Combination of vitrified / ceramics tiles up to (8'0"ht)

### CORRIDORS

- 600 X 600 Vitrified tile matt finish

### BALCONIES

- Anti-skid designer tiles

### STAIRCASE

- Passenger Staircase Granite as per architectural design

## PLUMBING & SANITARY

### CP FITTINGS

- Jaguar or equivalent

## DOORS

- Designer main door frame & shutter with designer hardware fittings

### INTERNAL DOOR FRAME & SHUTTER

- Designer internal door Frame & shutter with designer hardware fittings

### WINDOWS & FRENCH DOOR FRAME & SHUTTER

- 3 Track UPVC frames and shutter with clear glass and on mosquito mesh

## ELECTRICAL

- T.V/AC point in living and M. Bedroom
- Concealed copper wiring
- Modular switches

## Location Highlights

- 📍 Saibaba Temple - 200 mts
- 📍 APMC Yard / Vegetable Market - 1.0 kms
- 📍 Multi Speciality Hospital - 1.3 kms
- 📍 Exit to N.H - 500 mts
- 📍 Engineering College - 0.6 kms
- 📍 TB Dam - 2.0 kms
- 📍 D.C. Office - 0.5 kms
- 📍 Techno School / Colleges - 1.4 kms
- 📍 Vishal Mart - 1.5 kms
- 📍 Multi-cuisine Restaurant - 300 mts
- 📍 Railway Station - 3.5 kms
- 📍 Bus Stand - 3.0 kms

## Location Map







---

Reg Office: # 214, 1<sup>st</sup> Floor, Plot No.4, IInd Cross, MJ Nagar,  
Hospet, Dist: Vijayanagar, Karnataka - 583201.