

LIVE A LIFE WHERE TRAVEL IS ONLY FOR PLEASURE





LIVE CLOSE TO YOUR WORKPLACE,
CONVERT OFFICE HOURS
TO FAMILY HOURS IN NO TIME.

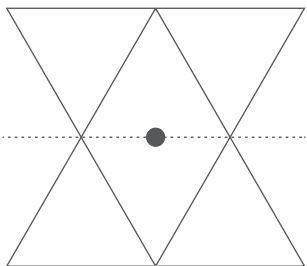


RESIDENCES

OFFICES

WELCOME TO A RESIDENTIAL LANDMARK,
OPPOSITE DOORDARSHAN TOWER.

Located opposite iconic Doordarshan Tower
is Gala Group's Eternia.
A project of premium 3 BHK apartments designed
to give you the true iconic life.





Actual site image



LIVE A LIFE THAT GIVES YOU THE TIME TO DISCOVER MORE.

Being amidst the commercial hub, Gala Eternia offers spacious 3 BHK deluxe and modern apartments. It enjoys ready social infrastructure and great connectivity to important parts of the city. All of it to make sure you spend less time commuting and more time enjoying your personal as well as family life.

4 towers of 14 floors each | Spacious 3 BHKs

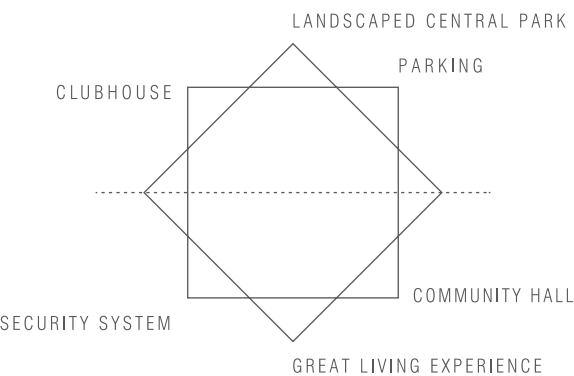
Full height windows for natural light and ventilation | Central garden

Clubhouse with multi-purpose hall and gymnasium | Sufficient parking space

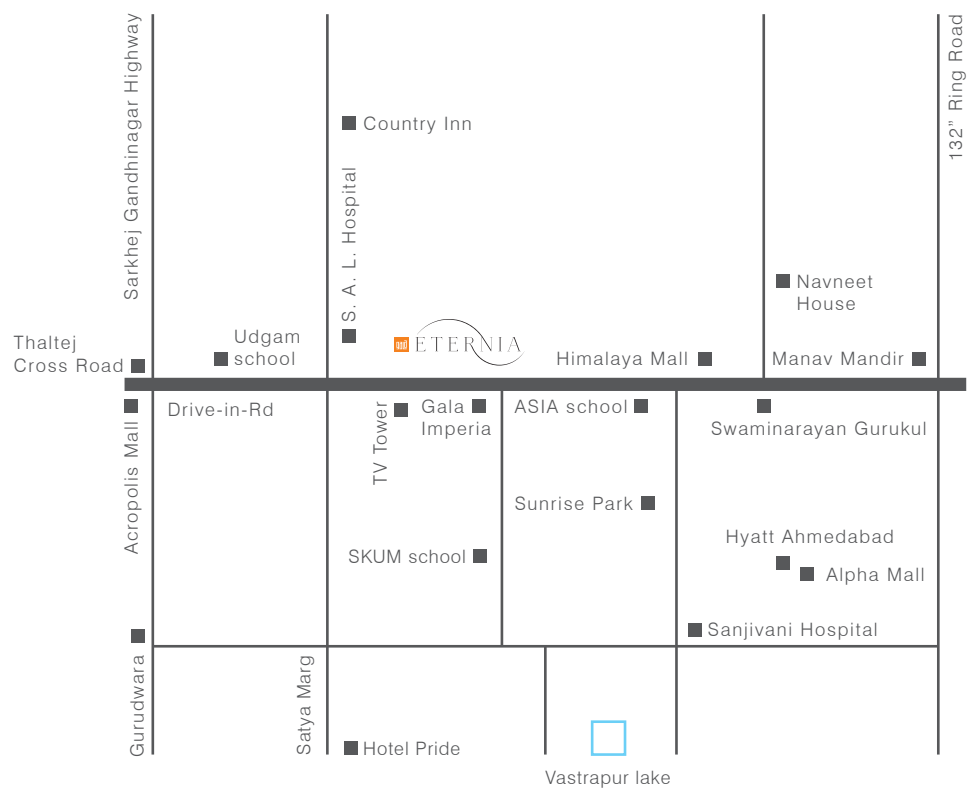
In close proximity to the upcoming Metro Rail Network

HAVE THE LUXURY OF MAKING COUNTLESS MORE MEMORIES.

Designed around a landscaped central park,
Gala Eternia features a host of amenities and community spaces
that'll delight you and your loved ones.
It will house a community hall, a clubhouse, and will also provide
a soothing view from every apartment.







S. G. HIGHWAY- 1.2 KM
 ASHRAM ROAD- 5.5 KM
 PRAHALAD NAGAR- 7.9 KM
 RAILWAY STATION- 9.5 KM
 AIRPORT- 14 KM

CUT DOWN COMMUTE. LIVE UP LIFE.

Gala Eternia is located in one of the most premium and lively parts of Ahmedabad.

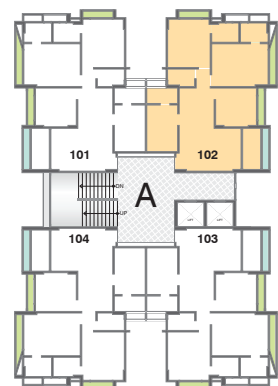
It comes surrounded by premium malls, restaurants, multiplexes, schools, playgrounds and hospitals.



SITE LAYOUT



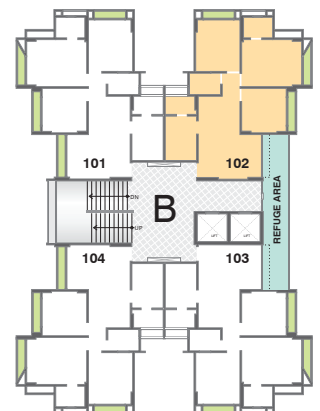




BLOCK - A (3 BHK-DLX)



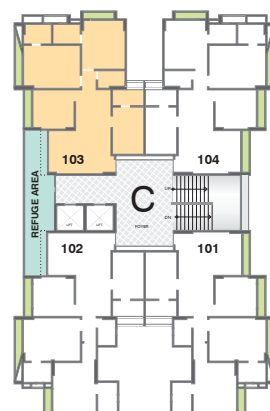
BLOCK - B (3 BHK-STD)
 REFUGE AREA - 5TH, 9TH & 13TH FLOOR
 (UNIT 102 & 103)





BLOCK - C (3 BHK-STD)

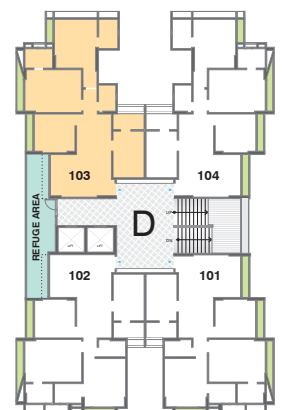
REFUGE AREA - 5TH, 9TH & 13TH FLOOR
(UNIT 102 & 103)





BLOCK - D (3 BHK-STD)

REFUGE AREA - 5TH, 9TH & 13TH FLOOR
(UNIT 102 & 103)







SPECIFICATIONS

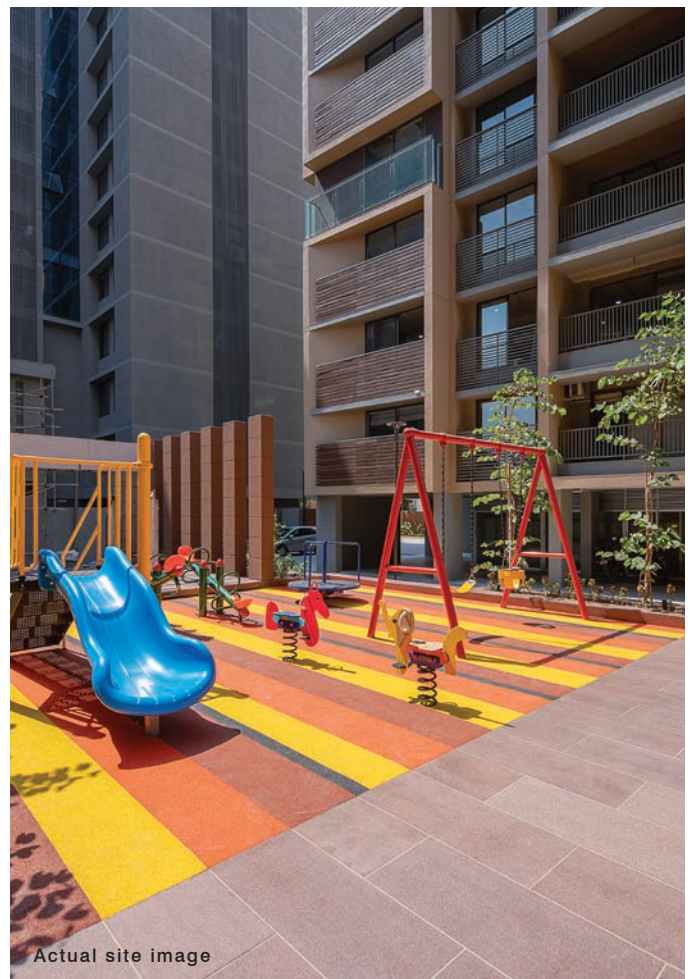
NO.	PARTICULARS	3 BHK APARTMENT
1	Drawing room	Vitrified tiles flooring
2	Living and dining	Vitrified tiles flooring
3	Master bedroom	Vitrified tiles flooring
4	Bedrooms	Vitrified tiles flooring
5	Kitchen	Vitrified tiles flooring Granite platform with S.S. sink and ceramic tiles dado up to lintel level
6	Kitchen yard	Vitrified flooring with ceramic tiles dado
7	Main door	Wooden frame with polished veneer finished door
8	Internal Door	Wooden frame with painted flush door
9	Windows	Aluminum sliding window
10	Toilets	Glazed/ceramic tiles dado upto lintel level
11	Toilets - Accessories	Good quality C.P Fittings & Sanitarywares
12	Electrification	Concealed copper wiring with Modular Switches
13	Colour	Internal – putty finish, External – apex / texture



Actual site image



Sample flat image



Actual site image

IN PURSUIT OF PERFECTION.

Ahmedabad's reputed real estate developer, Gala group, with its several state-of-the-art and thoughtful projects have made a difference to every customer's life.

With around 8 Million Sq.Ft. of residential and commercial development, we are meeting the requirement of every kind of property seeker.

From modern apartments to ultra-luxurious villas, we design homes around our customers' needs because we believe, everyone deserves a superior lifestyle.



INSPIRED BY
PERFECTION



GUJ RERA Reg. No.

PR/GJ/AHMEDABAD/AHMEDABAD CITY/AUDA/RAA00144/140917

gujrera.gujarat.gov.in

