



Karari HEIGHTS



REDEVELOPMENT
PROJECT BY

KARARI
BUILDERS &
DEVELOPERS

"IT'S NOT JUST LIFE... LIFESTYLE"

ABOUT THE DEVELOPERS

Since its inception in the year 2000, our company has been dedicated to transforming the real estate landscape with unparalleled craftsmanship and unwavering commitment. Our legacy of over two decades speaks volumes, as we create not just homes, but heavens where dream thrive. With 1000+ families served, our foundation of trust, integrity and customer-centric values ensure homes that surpass expectations. Fuelled by our passion for innovation and continuous improvement, we redefine the art of living.



KARARI HEIGHTS is a lifetime opportunity to experience an extremely superior lifestyle. We have created your desired abode and the amenities are designed to enhance your lifestyle by providing comfort, convenience, happiness and luxury. It is a magnificent G+18 storey tower, located in the heart of Nallasopara West. KARARI HEIGHTS takes luxury to new heights, located in a prime location, we offer you sophisticated living to elevate your premium lifestyle.



Luxury Redefined

Extraordinary internal features for a life well-lived.



Indulge in an array of amenities that elevate your living experience to unprecedented levels of opulence.



KEY FEATURES

STRUCTURE: The structure will be designed a multi frame structure of RCC with **Anti Termite Treatment** and provisions for earthquake resistant features.

ELEVATION & PLANNING: Modern designed elevation features will be provided along with careful and detailed planning with plenty of light and ventilation in room with no wastage of space and with proper co-ordination of all rooms.

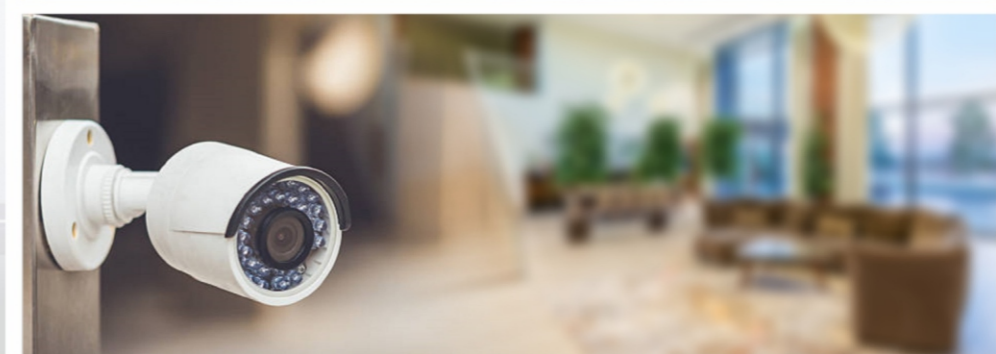
ENTRANCE LOBBY: Well designed and spacious entrance lobby.

ELEVATOR: Branded reputed company elevator / lift will be provided.

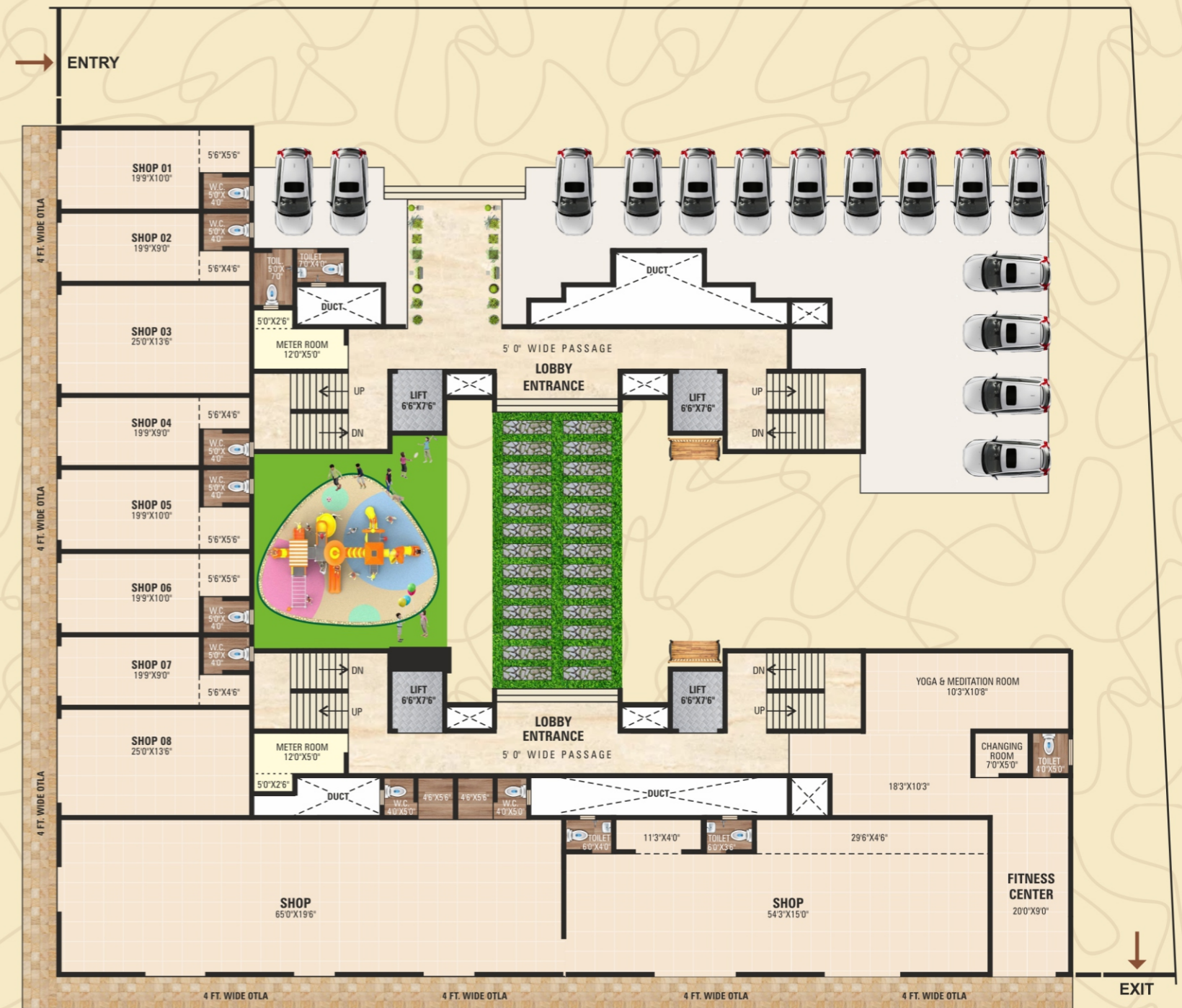
CCTV: 24X7 CCTV Security.

REFUGEE FLOOR: Provision on 8th, 13th & 18th floors.

OTHERS: Jogging Track, Kids Play Area, provision for Roof Top Banquet Hall, Yoga & Meditation Room, Fitness Centre and much more

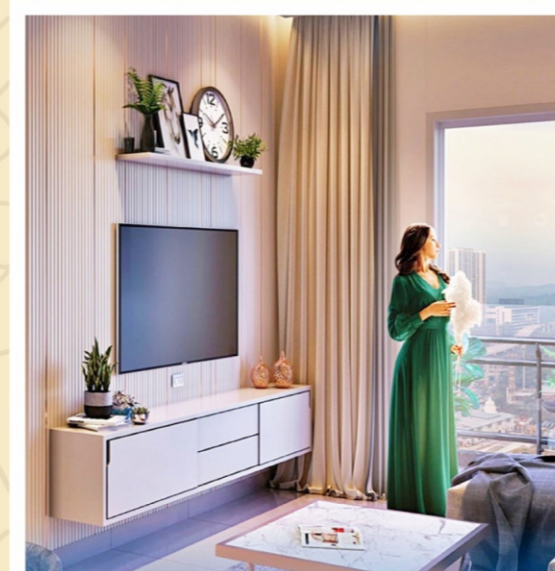


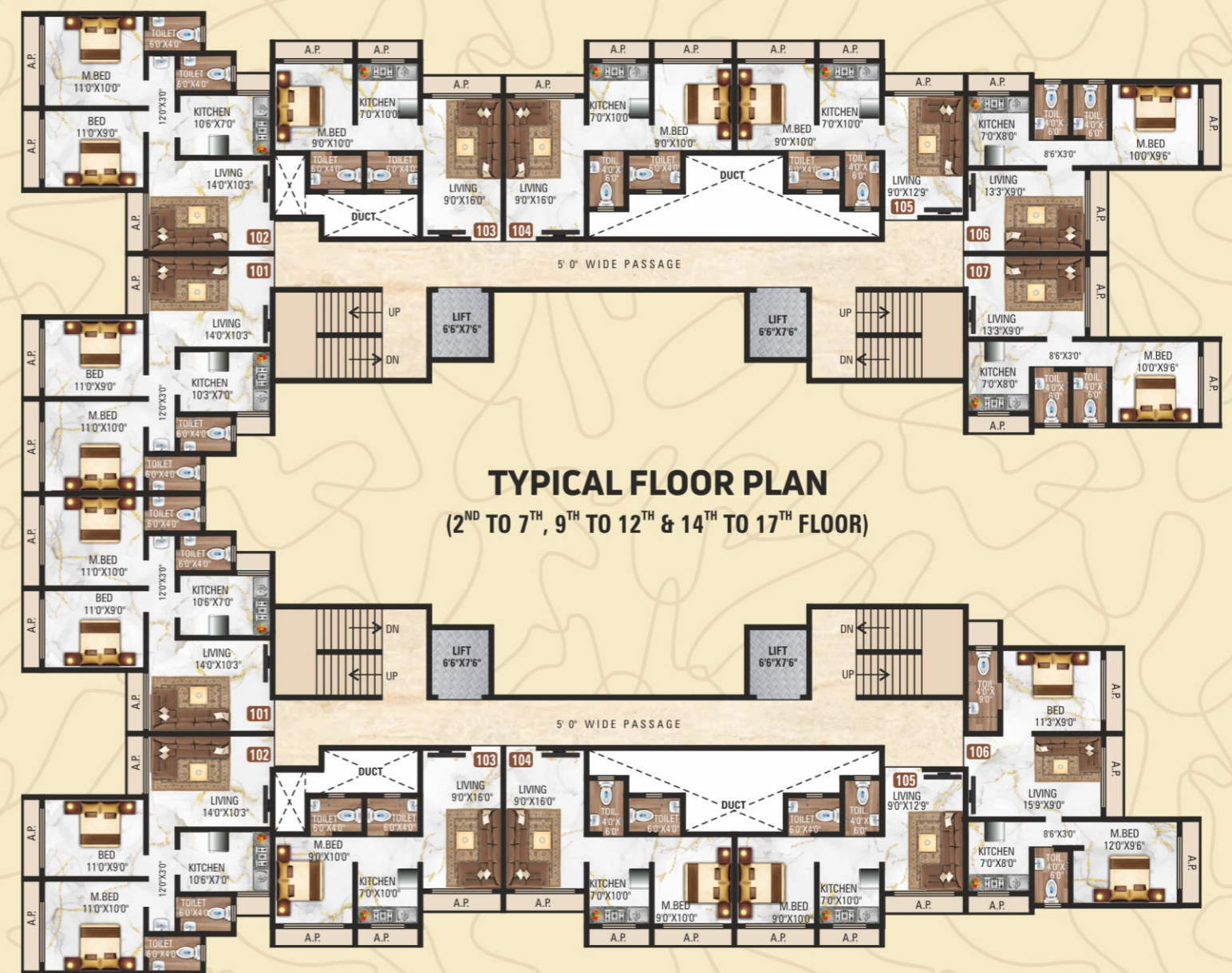
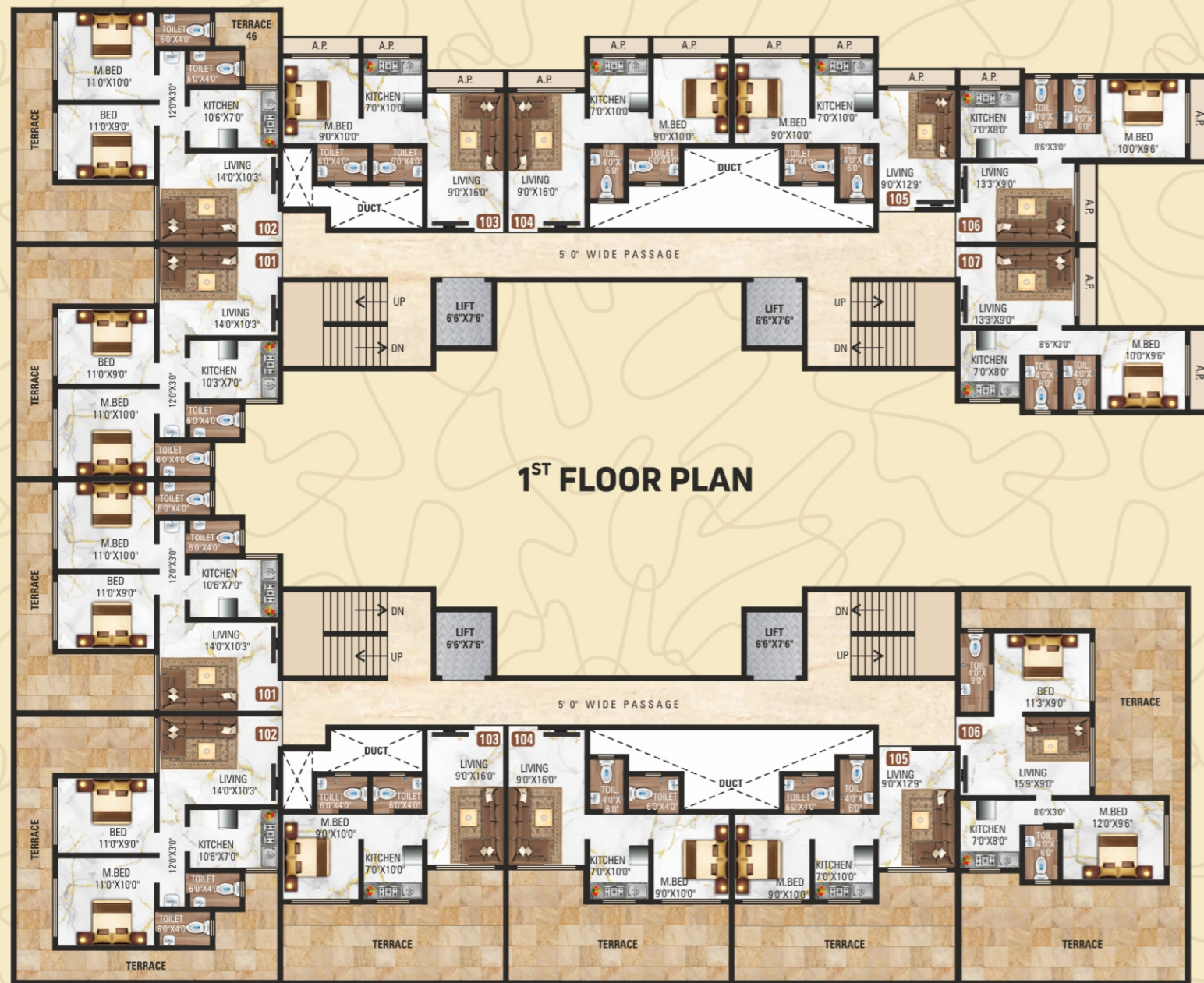
LAYOUT PLAN

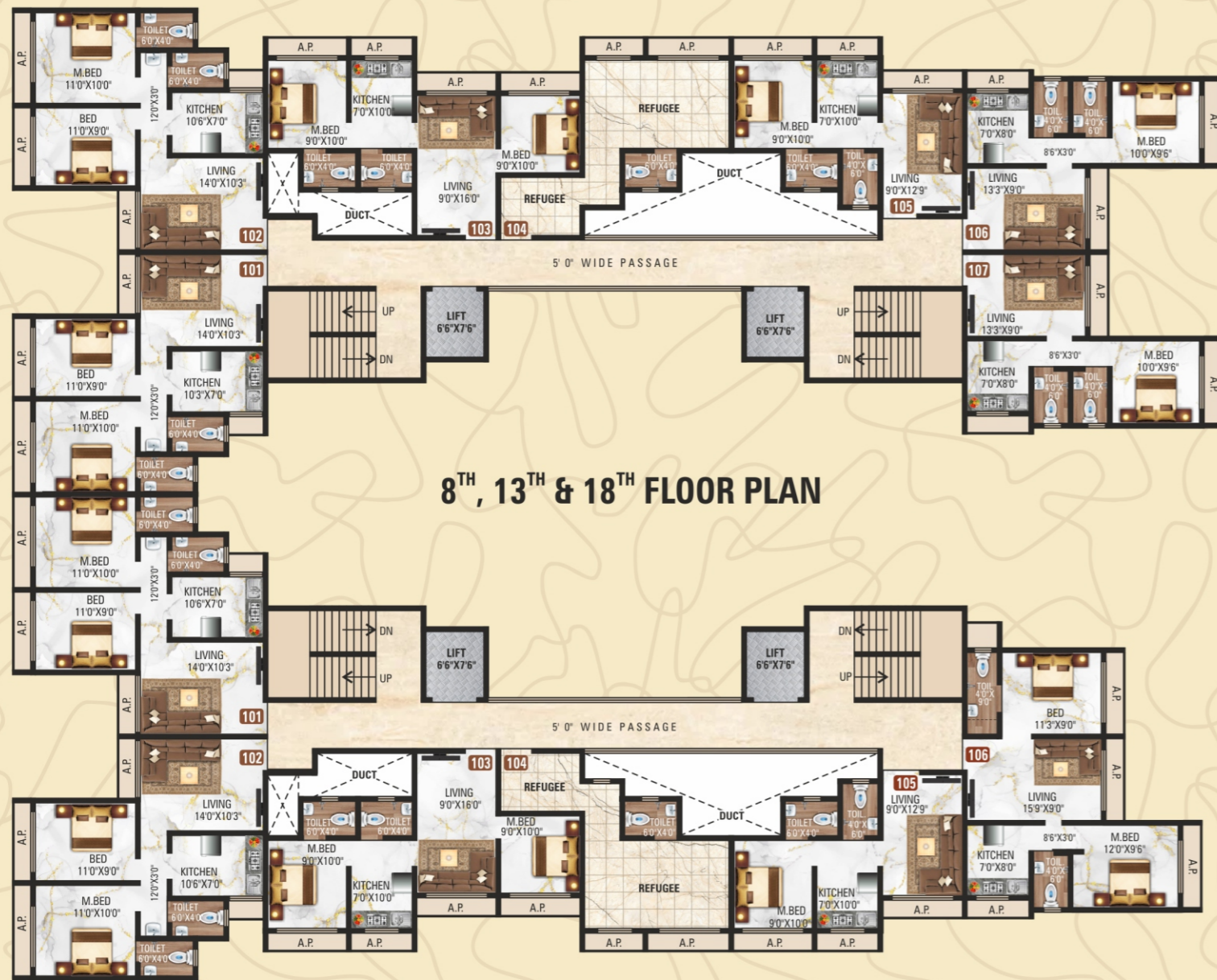


GROUND FLOOR PLAN

Peaceful Place, Good Views, Best Destination, Easy Connectivity







8TH, 13TH & 18TH FLOOR PLAN

SEAMLESS ACCESS

Railway Station, Bus Depot, Schools, Colleges, Super Markets, Hospitals, Worship Places, Restuarants, Municipal Garden, Jogging Track and many more landmarks just within 5 To 10 Minutes Walking Distance.



SOME OF THE MAJOR BRANDS IN THE VICINITY



AMENITIES

LIVING ROOM:

- Heavy Laminate Finished Main Door With Branded Fittings.
- Vitrified Flooring Tiles In Living Area.
- POP False Celing With Extra Light & Fan Point.
- Branded Paint With Internal Gypsum Finished Walls.
- Heavy Anodized / Powder Coated Windows Passate With Privacy Glass / One Side View Glass.
- Fire Sprinklers.
- Provision Of Television Connection, Internet & WIFI Connection, Fans, Lights, AC and Adeqaute Electrical Points.
- Branded Switch Boards.

KITCHEN:

- Granite Platforms With Stainless Steel Sink.
- Glazed Tiles Upto Beam Bottom Level.
- Modular Kitchen With Stainless Steel Trolley.
- Fire Sprinklers.
- Provision Of Microwave Oven Point, Refrigerator Point, Washing Machine Point, Aquaguard Point, Exhaust Fan Point.
- Provision For Washing Machine & Refrigerator in Kitchen Utility Area

BEDROOM:

- Laminate Finished Door With Branded Fittings.
- Vitrified Flooring In Room.
- POP False Ceiling With Fan & Light Point.
- Anodized / Powder Coated Window Passate With Privacy Glass.
- Branded Switch Boards.
- Provision For AC Points, Adequate Electric Point.
- Fire Sprinklers.
- Inverter Point on Bathroom Overhead Loft.

BATHROOM:

- Laminate Finished Door With Branded Fittings.
- Branded Concealed Plumbing Fittings.
- Glazed Tiles On Walls.
- Granite Door Frame.
- Rain Water Harvesting Flush System.
- Overhead Water Tank On Bathroom Loft.



LOCATION MAP



Karari
HEIGHTS

REDEVELOPMENT PROJECT BY



KARARI
BUILDERS &
DEVELOPERS

SITE: Karari Heights,
Shurparak Cricket Ground,
Station Road,
Next to Police Station,
Nallasopara (West),
Dist. Palghar 401203.

OFFICE:
Shop No. 2, B-1 Darul Mamur,
Opp. Gautam Buddha Statue,
Station Road,
Nallasopara (West) 401203.



MAHA RERA NO.
P99000053011

ARCHITECT:
UMESH KEKRE
Shop No. 02, Kishor Kunj Apt.,
Vishal Nagar, Vasai (West).

99708 05354 / 93243 88815
www.karariheights.com

Note: All the plans, drawings, amenities, facilities, etc. are subject to the approval of the respective authorities and would be changed, if necessary. 3D plan & interior graphics shown are for illustrative purpose only. The discretion remains with the developers. All renderings, floor plans map's are artists conception of the building, wall roadways or landscaping.