



**NEWTON  
HOMES**

**Hadapsar, Near Runwal Seagull**

BY RAVIMA



---

**Creativity Has A New Address**

---





Homes That Express Creativity

GET READY FOR  
**#LiveCreative2.0**







Your window to creativity opens here. Welcome to Newton Homes Hadapsar, Near Runwal Seagull a project by Ravima Ventures and Raj Engineers that celebrates creativity and gives the freedom to express yourself through the beautiful spaces and amenities

---

2 BHK, 2 BHK Flexi Residences

---

Well-Connected To Finest Schools, Colleges, Hospitals, IT Parks

---

Lifestyle Amenities To Nurture Creative Living

---

An Excellent Community Of 12000+ Creative-Loving Families

---

Ideally Located in Hadapsar That Offers Great Connectivity

# Experience Creative Living

A CREATIVE WAY OF

---



Creativity



Care



Playing



Safety



Celebration



Learning



## Why Newton Homes Is Your Dream Home?

### What is creativity?

The freedom to live on own terms, explore the unexplored and the freedom to grow. But often, as we grow up, we tend to leave behind the creativity and put on the logical thinking hat.

Newton Homes celebrate creativity in everyone. From simplest hobbies to brightest of passions, it nurtures and helps every individual irrespective of age to express freely, every day. Creativity is bringing out and nurturing the skills, exploring the unexplored and tapping a whole new world.

### What is Newton Creativity Center?

Creativity has no boundaries and we offer the same at Newton Creativity Center. Explore new skills, learn and nurture your talent, develop communication, motor, research skills through different activities at Newton Creativity Center. This one of a kind offering is at Newton Homes, where kids and adults both open the doors to creativity.

## Homes Crafted With Maximum Efficiency & Zero Wastage

- Flexi Area
- Multi-use spaces
- Natural light & ventilation
- Additional space for seating ledge
- Kitchen with maximum space utilization
- No wastage of space in passages



**A Pinch Of  
Creativity**  
Added To 2 BHK  
Flexi Homes

Don't hold back your creativity when you can have a 2 BHK flexi home at Newton Homes, Hadapsar. You get an extra room to bring out the best in you.

- WFH Room
- Hobby Studio
- OTT Room
- Home Schooling Space
- Pooja Space
- Leisure Space
- Can increase Living / Dining Room

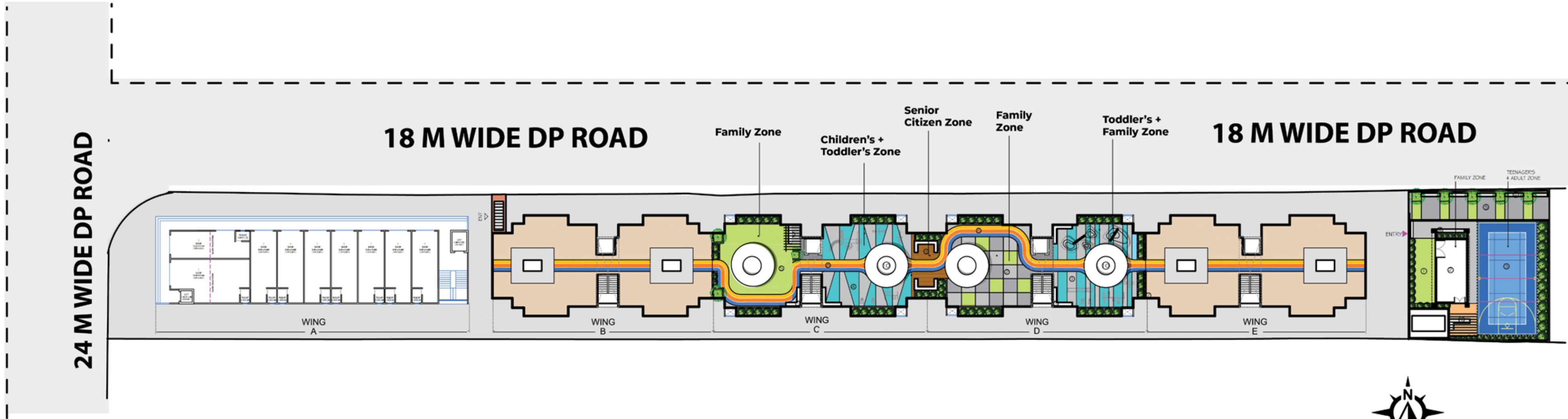




# A Lifestyle For You To Live Creative, Every Day!

Newton Homes, Hadapsar offers a plethora of lifestyle amenities that bring in the creative vibe for the families to enjoy.

The amenities are designed in a way that each age group has the freedom to express their thoughts and embrace creativity like never before.



**2 BHK**  
**FLEXI**  
 UNIT PLAN  
**775** SQ. FT.  
 CARPET AREA



**2 BHK**  
 UNIT PLAN  
**695** SQ. FT.  
 CARPET AREA



Wing - B & D

Typical Floor Plan 1st to 7th



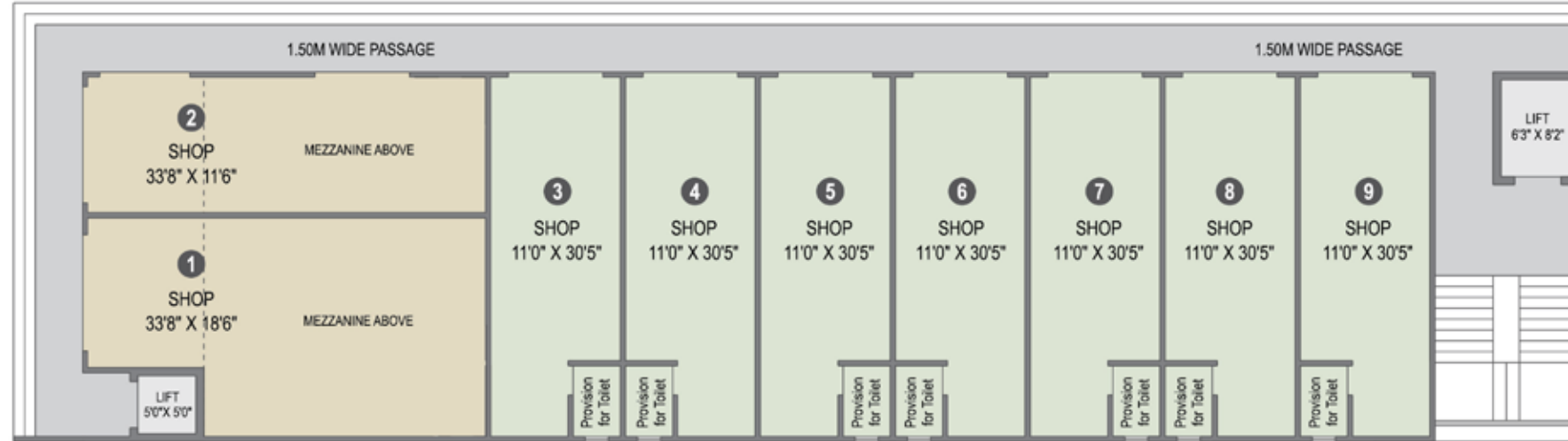






## WING 'A'

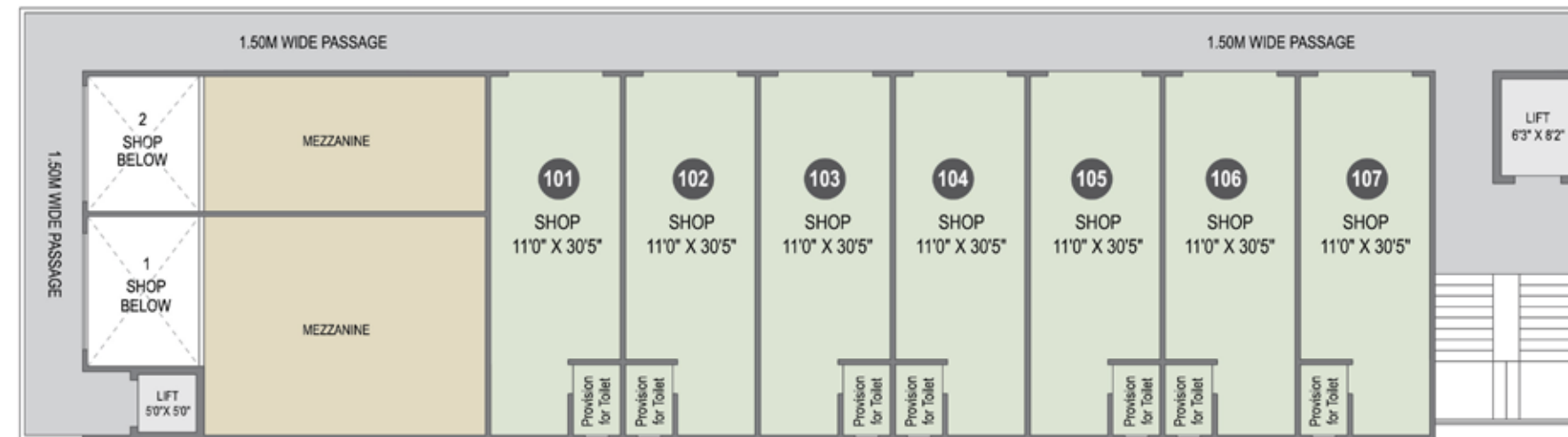
### GROUND FLOOR PLAN



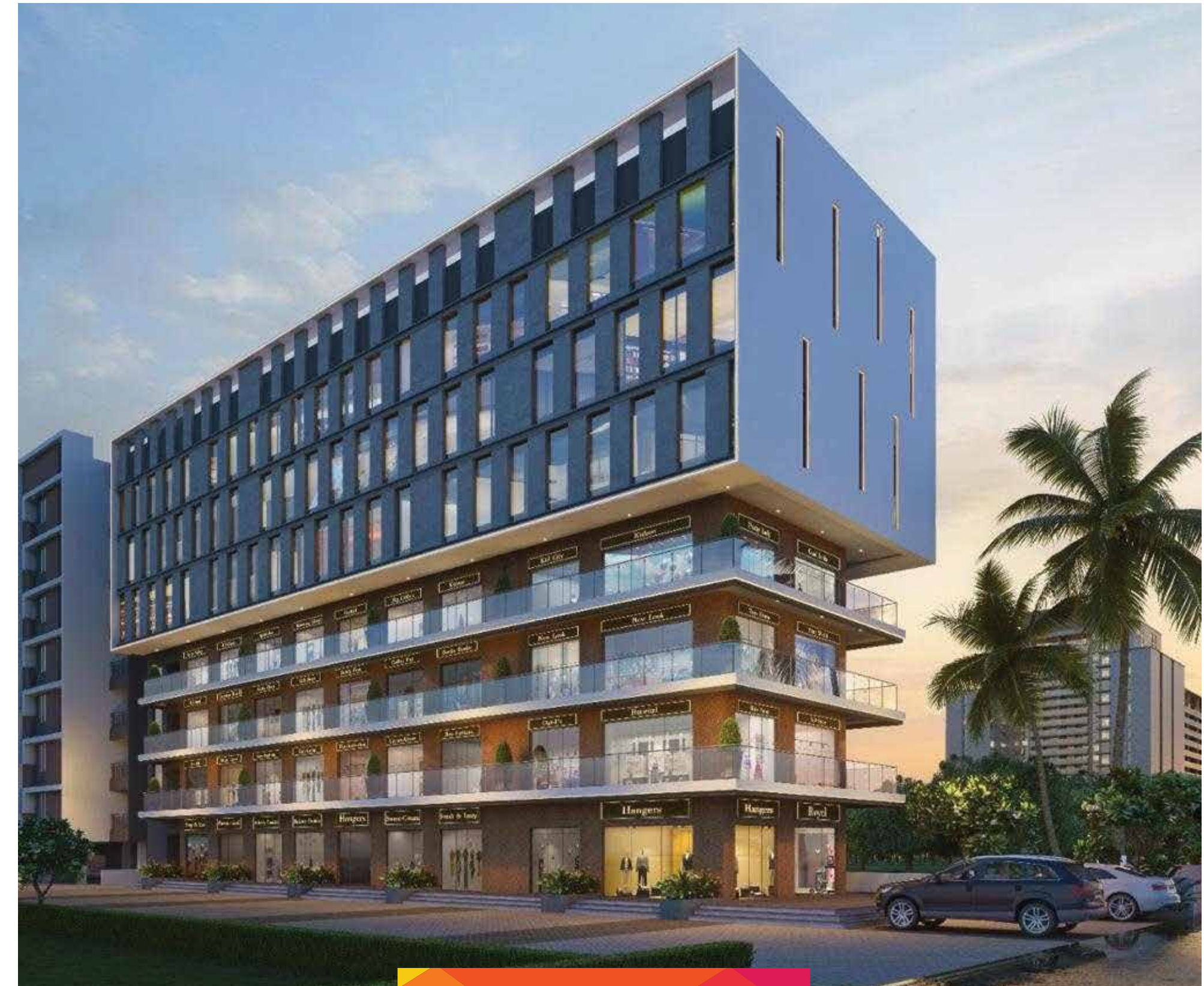
SHOP NO.	CARPET AREA SQ.M	MEZZANINE SQ.M	TOTAL AREA SQ.M	TOTAL AREA SQ.FT.
1	52.87	40.86	93.73	1009
2	36.55	25.36	61.91	666
3, 4, 5, 6, 7, 8, 9	31.35	-	31.35	337

## WING 'A'

### 1ST FLOOR PLAN



SHOP NO.	CARPET AREA SQ.M	TOTAL AREA SQ.M	TOTAL AREA SQ.FT.
101 TO 107	31.35	31.35	337



**SHOP SPACES**



# AMENITIES







## Terrace Amenities

Toddler's Zone

Children's Zone

Family Zone

Senior Citizen Zone

Party Area

Buffet Area

Walkway/ Pathway

Rubber Mound

Rabbit Hole

Climbing Wall

Seating Area

Yoga & Meditation Deck

## Ground Level Amenities

Children's Play Area

Newton Creativity Center

Multipurpose Court

Buffet Counter with Pergola

Motorable Landscape - 3m wide







### **Safety & Security Features**

- CCTV Camera for Entire Project
- Elevator CCTV Coverage
- Security Cabin
- Visitor Management Society App
- Ravima Care Security App
- Live Video Call For Individual Homes
- Video Call Alert on Mobile

## Only The Best For Creative Living

Enjoy contemporary living like never before. Indoor specification at Newton Homes, Hadapsar has been carefully crafted to deliver a fine urban living experience.

Every aspect of indoor specification right from walls to flooring, electrical fittings to security and safety features, everything is finely considered to put together an indoor living experience that is smart and urban

## SPECIFICATIONS

### STRUCTURE

- Earthquake-resistant RCC frame structure
- External & Internal wall AAC blocks/bricks
- External wall sand-faced plaster
- Internal wall in gypsum/POP finish

### ELECTRICAL FITTINGS

- Child-friendly electrical switches which are low-voltage, safer than traditional switches
- Electrical concealed copper wiring with modular switches & adequate points in all rooms
- Electrical provision for split AC in master bedroom
- Telephone point in living room & master bedroom
- Ceiling Fan points in all rooms

### FLOORING

- Vitrified tile flooring in living room, dining room, kitchen, bedroom & passage
- Matte finished ceramic flooring in balcony, dry balcony & toilets

### WINDOWS

- Safety grills in windows for security
- Aluminium windows with mosquito mesh
- MS Railing up to 1.2 mtr height will be constructed for protection of kids

### BATHROOM & TOILET

- Glazed tiles up to lintel level in all bathrooms
- Concealed plumbing
- American Standard / Jaquar / Hindware or equivalent CP fittings & sanitary fixtures

### PAINTING

- Acrylic based external paint
- Superior quality interior paint
- Oil paint on MS Grills

### DOORS & DOOR FRAMES

- Attractive main entrance door with premium quality fittings & fixtures
- Flush door with wooden door frame in all rooms
- Bathroom & WC door frames in granite

### KITCHEN

- Closed kitchen for better storage space
- Granite kitchen counter top for more elegant look with SS sink
- Separate electrical points as per electrical layout
- Additional SS sink in the dry balcony for cleaning utensils provided
- Provision for water purifier
- Provision for exhaust fan
- Windows for natural sunlight & ventilation

### TERRACE

- Matte finish flooring
- Granite counter with charging points for mobile etc
- For living room 3-track sliding doors.

### DRY BALCONY

- Anti-skid flooring
- Electrical point for washing machine
- Additional SS sink with granite top

### LIFT & RAMP

- Accessibility for toddlers & elders

### VIDEO DOOR PHONE

- Live video call when the doorbell rings
- Video call alert on mobile phone when motion is detected

### ECO FEATURES

- Rainwater harvesting
- Sewage treatment plant

### SOFTWARE INTEGRATION

- 2-tier security through app & video calling
- Wi-Fi doorbell integration through app
- Society Gateway App





● **Daily Necessities**

- Reliance Mart (2km )
- D-Mart (10km )
- Shopping Arena (waking distance)
- Medical (walking )

● **Schools & Colleges**

- S P M college & school (2m)
- New English school & college ( 6m )
- DR Dada gujjar ( 3m )
- Bishop school ( 15m )
- Delhi public school ( 15m )
- Euro school ( 15m )
- Vibgyor school ( 15m )
- Orchid school ( 10m )
- S M Joshi college ( 10m )

● **Shopping**

- Amanora Mall ( 15km )
- Seasons Mall ( 15km )
- 93 Avenue ( 15km )

● **Workspaces**

- Magarpatta ( 15m )
- We Work ( 15m )
- Mega Center ( 12m )
- Eon IT Park ( 23m )
- M I D C ( 12m )

● **Multispeciality Hospitals**

- Noble hospital (10m)
- Sahyadri hospital ( 15m )
- Life care ( 10m )
- H3 hospital ( 10m )

● **Facilities**

- Solapur highway (10m)
- Gadital bus stop ( 10m )
- NIBM (10m)
- Railway station ( 25m )
- Airport (30m)
- Inox (15m)
- Cinepolis (15m)



# WHY HADAPSAR?

- Urban Connectivity
- Future Ready
- Lifestyle Hub
- Growth Driven

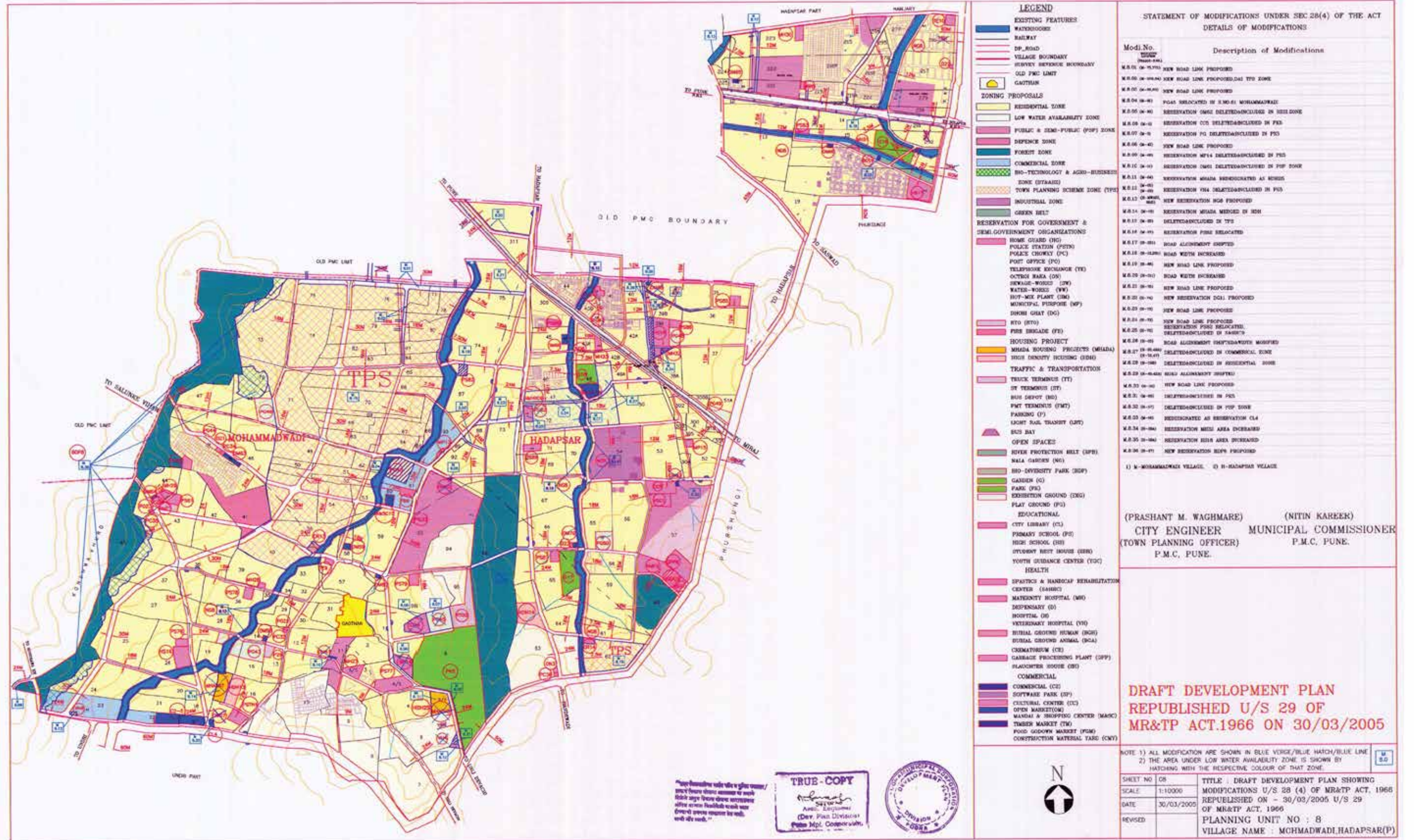
## Experience The Best Connectivity

An array of possibilities open when you have the right connectivity. Newton Homes, Hadapsar, Near Runwal Seagull stands at a location that has an excellent connectivity with the entire neighbourhood

This project offers the best access to all the established and upcoming infrastructure of education, work, healthcare, and lifestyle.



Scan QR code to view the project location film



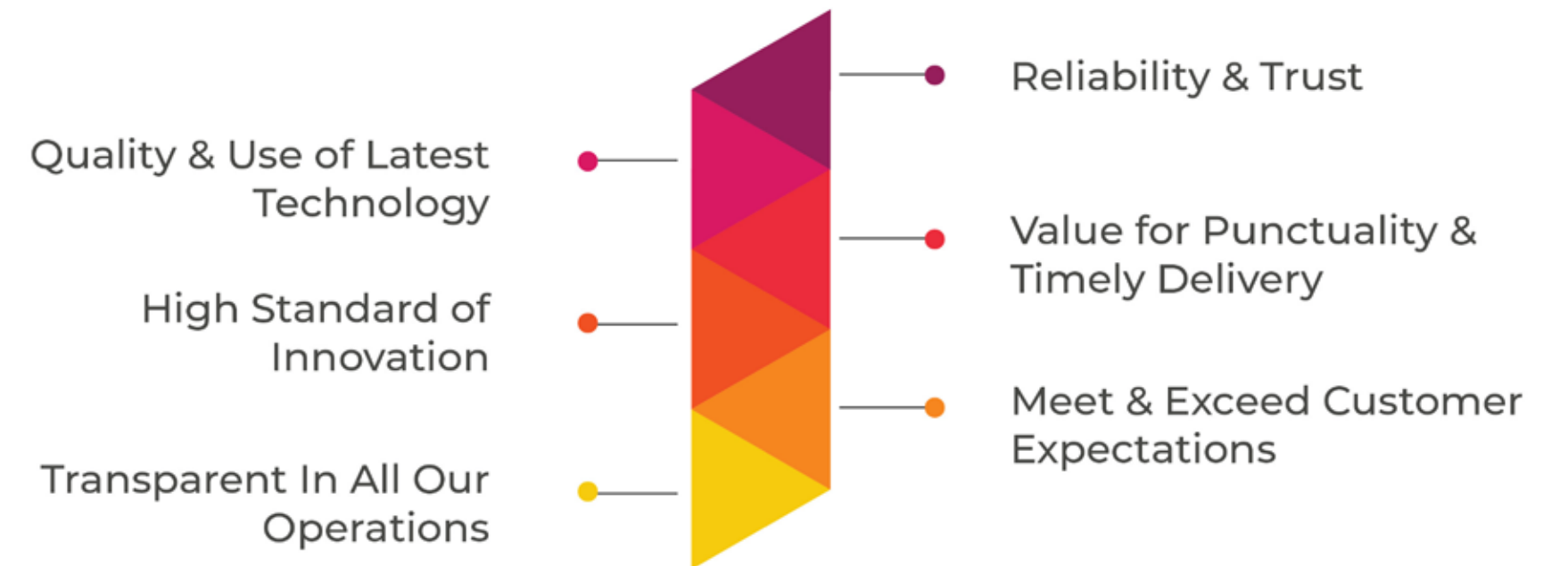




## Crafting Spaces With Love & Care

Ravima Ventures has come a long way from its humble beginnings 20 years ago, to becoming a renowned real estate brand that stands for innovation and customer satisfaction. Crafting spaces with love and passion, we have created a legacy of unmatched quality and community building in Pune.

## OUR 6 CORE VALUE PILLARS



20

Years of Legacy

13+

Residential & Commercial Projects

1200+

Happy Families



Customer happiness and satisfaction are of paramount importance to us and hence we provide Ravima Care. Through Ravima Care, our philosophy is to spread smiles and create a community of people filled with beaming joy. Home buying is not mere a transaction but an emotion and we take utmost care to protect it.



For more informations, log on to : [www.ravima.in](http://www.ravima.in)



# Credits

## Architect

Mr. Imran Shaikh

Cubix Architects Associates

## MEP Consultant

Mr. Narendra Chavan

Siddhivinayak MEP Consultant

## Landscape Designer & Consultant

Mr. Mahesh Chinchalkar

Landforms Studios

## Structure Consultant

Patil & Bugade

PB Associates

A Project By



Get in touch

**+91 87999 27301 | +91 90750 14495**

[sales-newtonhomes@ravimaventures.com](mailto:sales-newtonhomes@ravimaventures.com)

**RERA NUMBER: P52100048243**



Scan QR  
Code  
to Know  
More

**Newton Homes** - Sr no 71/3/2C, Near Runwal Seagull, next to Shri Ram Chowk , Handewadi Road , Pune 411028.  
**Ravima Ventures** : 108, Jewel Square, Next to Vivanta by Taj, Koregaon Park, Pune - 411001.

**Disclaimer:** The materials contained in this brochure should not be considered an offer and are solely of an informational nature. The references, images, advertising or declarations made herein are informational only, and not to be interpreted in any other manner. The developer (Ravima Ventures and/or its affiliates and/or its subsidiaries) reserves the right to make any modifications to the materials, specifications, plans, designs and delivery of the residences advertised here, without any prior notice. All of the specifications contained herein, including technical, promotional, related to images or of any other nature are the property of Ravima Ventures and/or its affiliates and/or its subsidiaries and such specifications may not be used by any person, including an individual entity, without the prior written consent of Ravima Ventures and/or its affiliates and/or its subsidiaries.