

LOCATION MAP



LOCATION ADVANTAGES

METRO RAIL 3 MINS	CENTRAL PARK 5 MINS	ISKCON TEMPLE 5 MINS	GOLF COURSE 5 MINS	CORPORATE PARK (NEXT BKC) 5 MINS
SCHOOLS, MALLS, MULTIPLEXES, HOTELS, HOSPITALS & BANKS ETC. 5 MINS		MUMBAI-PUNE EXPRESSWAY 15 MINS	NAVI MUMBAI INTERNATIONAL AIRPORT 20 MINS	



MahaRERA Reg. No. Phase I - P51700002446,
Phase II - P52000026796, Phase III - P52000029168
(<https://maharera.mahaonline.gov.in>)

Architect Hiten Sethi & Asso.	Interior Consultant Vini & Asso.	Landscape Architect Newarch Landscapes LLP	RCC Consultant Mahimtura Consultants Pvt. Ltd.	MEP Consultant Anil Verma & Asso.
----------------------------------	-------------------------------------	---	---	--------------------------------------

Site Office: Paradise Superstructures, Sai World Empire, Opp. Kharghar Valley Shilp (CIDCO Colony), Kharghar, Navi Mumbai
Corp. Office: 1701, Satra Plaza, Plot No. 19 & 20, Sector - 19 D, Vashi, Navi Mumbai - 400 705

A PROJECT BY
PARADISE GROUP
Your World. Our Vision.
ISO - 9001: 2015 Certified Organization

**GRANDEUR OF
6 FAMOUS EMPIRES
DISCOVERS YOUR HOME**



**SAI
WORLD EMPIRE
KHARGHAR**

Image for representation purpose only

thoughttrains

**6 EMPIRES, 6 LIFESTYLES
1 MODERN KINGDOM**



**SAI
WORLD EMPIRE
KHARGHAR**

PROJECT HALLMARKS



**18 ACRE
KINGDOM**



**G+46 STOREYED
MAGNIFICENT TOWERS**



**2, 3 & 4 BHK
LUXURY HOMES**



**GRAND
CLUB ATHENA**



**DESIGNER
PODIUM GARDEN**

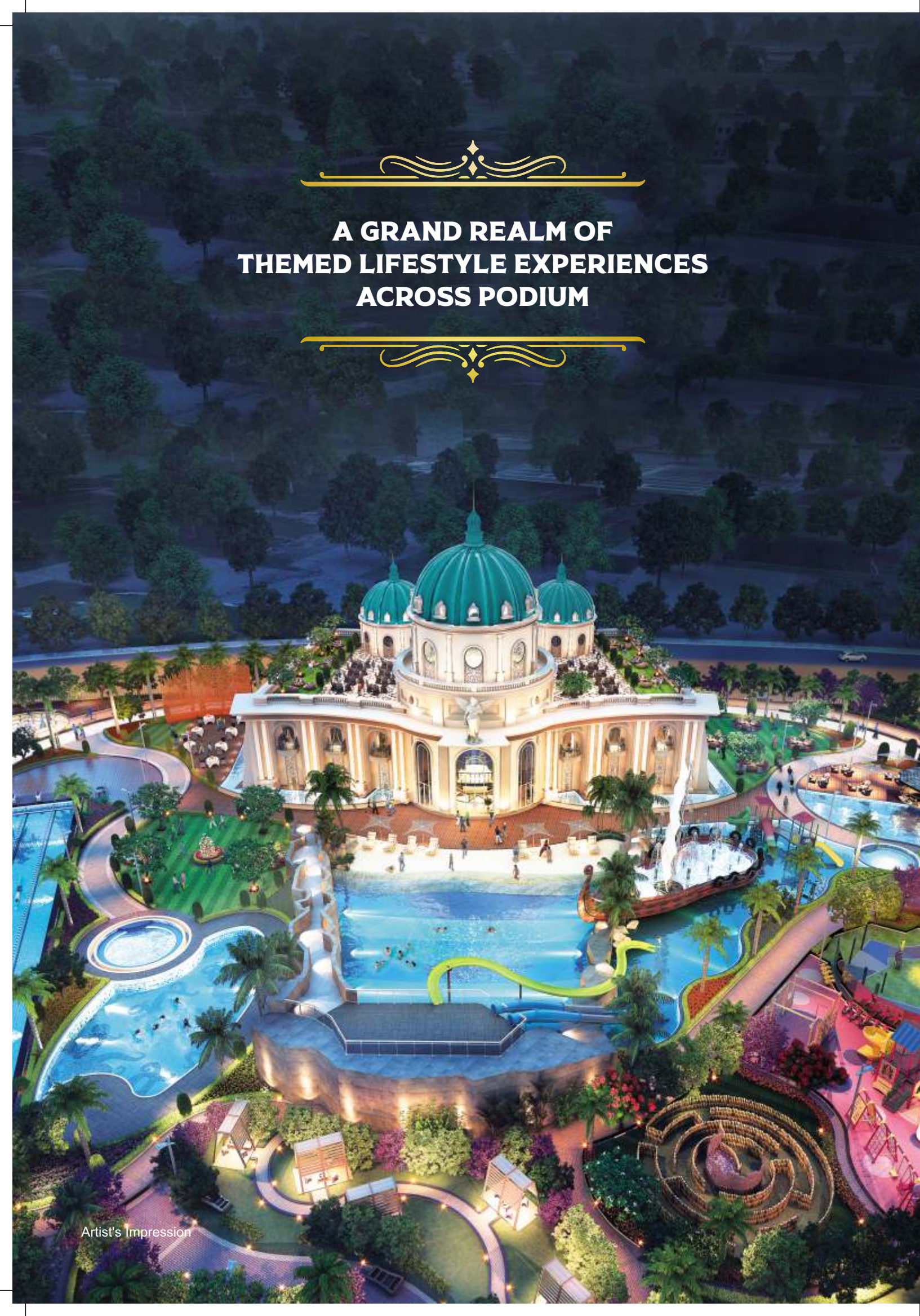


**AMPLE PARKING
SPACE**



EXPERIENCE
**KHARGHAR'S MOST
LUXURIOUS KINGDOM BRINGING
THE BEST OF HEALTH, WELLNESS,
ENTERTAINMENT, SPORTS
AND RECREATION**

**A GRAND REALM OF
THEMED LIFESTYLE EXPERIENCES
ACROSS PODIUM**



**FEATURING
6 ROYAL LIFESTYLE AMENITIES THAT BEFIT
THE MODERN DAY KINGS AND QUEENS LIKE YOU**



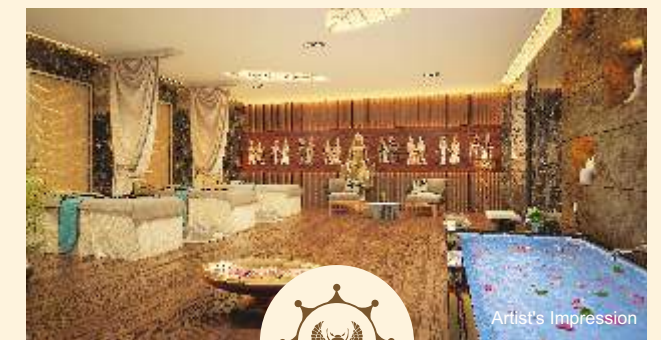
THE COLOSSEUM DOME
INSPIRED BY THE ROYALTY OF
KING JULIUS CAESAR OF ROMAN EMPIRE



CLUB ATHENA
INSPIRED BY THE GRANDEUR OF
KING ALEXANDER THE GREAT OF GREEK EMPIRE



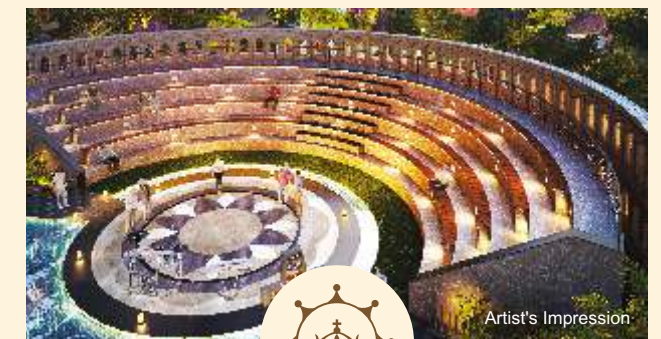
GRAND ENTRANCE
INSPIRED BY ARCH DE TRIUMPH THAT WELCOMED
KING NAPOLEON BONAPARTE OF FRENCH EMPIRE



ASWAN SPA
INSPIRED BY ROYAL INDULGENCES OF
QUEEN CLEOPATRA OF EGYPTIAN EMPIRE



ESPANA KIDS PARK
INSPIRED BY GAUDI ARCHITECTURE &
LIFESTYLE OF KING CHARLES-I OF SPANISH EMPIRE



THE BROADWAY AMPHITHEATRE
INSPIRED BY ICONIC AMPHITHEATRE & ROYALISM OF
QUEEN ELIZABETH-I OF BRITISH EMPIRE

Artist's Impression

Artist's Impression

Artist's Impression

Artist's Impression

Artist's Impression

Artist's Impression

Artist's Impression

LEISURE POOL WITH
FLOATING BAR



Artist's Impression

MULTI-PURPOSE
SPORTS COURT



Artist's Impression

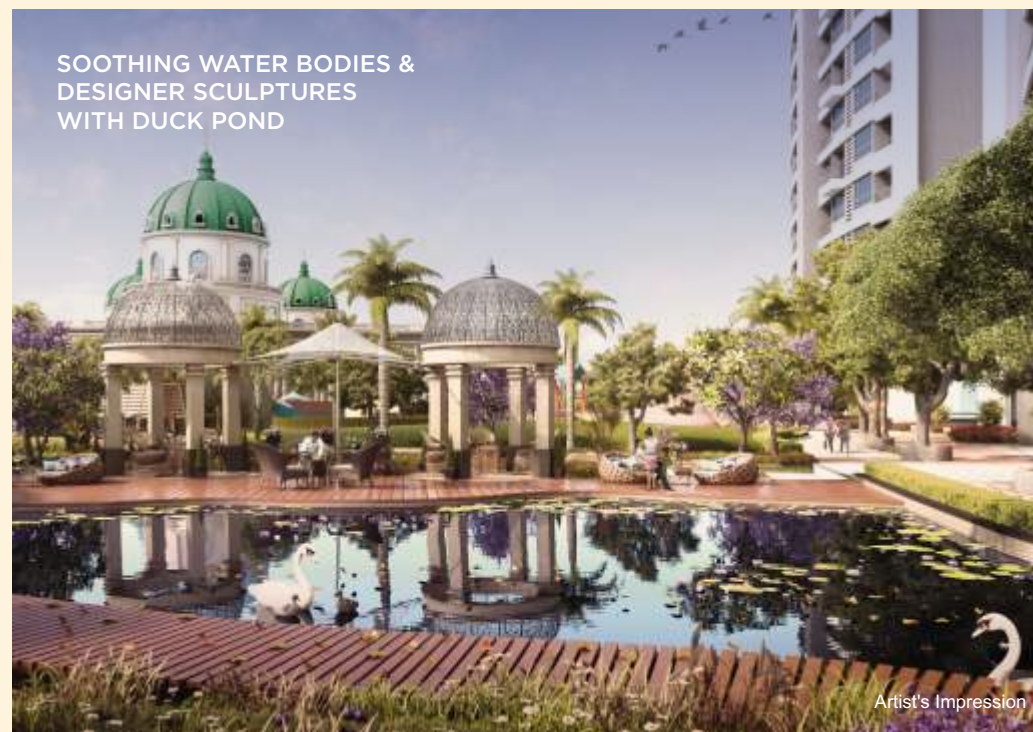
PEACEFUL LANDSCAPED
BOULEVARD WITH
MEDITATION GAZEBO



Artist's Impression

**EXPERIENCE
ROYAL LIVING SPREAD
ACROSS ACRES OF LANDSCAPED
PODIUM GARDEN WITH MESMERISING VIEWS
AND NATURAL SURROUNDINGS**

SOOTHING WATER BODIES &
DESIGNER SCULPTURES
WITH DUCK POND



Artist's Impression

WAVE POOL WITH LOUNGERS,
SIT-OUTS & RAIN DANCE SHIP



Artist's Impression

BAMBOO MAZE GARDEN WITH
WALKWAYS & SIT-OUTS



Artist's Impression

WELL-PAVED JOGGING
& CYCLING TRACK



Artist's Impression

THEMED GARDENS
WITH PET PARK



Artist's Impression

LET THE GRANDEUR OF
GREEK KINGDOM BECOME YOUR
BEST PLACE OF CELEBRATIONS



**CLUB
ATHENA**
BY THE BEACH SIDE



SPA WITH
AROMATIC AMBIENCE



PERSONAL NUTRITIONIST



AIR-CONDITIONED AEROBICS
CENTRE WITH PERSONAL TRAINER



MODERN GYMNASIUM
WITH TRAINER



AIR-CONDITIONED YOGA
& MEDITATION ROOM



AEROBICS
EXERCISE POOL



JACUZZIS
WITH HOT JETS



BANQUET HALL FOR
PARTIES & GET-TOGETHER





SAI
WORLD EMPIRE
KHARGHAR

THE MODERN DAY
EMPIRE CELEBRATING
THE ROYAL ERA OF IMPERIALISM



Artist's Impression



ACTUAL LOBBY IMAGE OF CAESAR TOWER - ROMAN EMPIRE



ELEVATOR LOBBY ACTUAL IMAGE



WISHING FOUNTAIN ACTUAL IMAGE



ELEVATOR AISLE ACTUAL IMAGE

6 MAGNIFICENT TOWERS SPREAD ACROSS 18 ACRES



MASTER PLAN

LEGEND

- 01 ENTRANCE LOBBY
- 02 CYCLE TRACK
- 03 JOGGING TRACK
- 04 GRAND PLAZA WITH MUSICAL FOUNTAINS
- 05 MULTI-PLAY COURT (TENNIS / BASKET BALL COURT / CRICKET)

FRENCH COVE

- 06 COLOSSEUM ARENA
- 07 SPRAWLING LAWN
- 08 STROLL WALK
- 09 CLOISTER
- 10 STEPPING STONES
- 11 AMPHI ENTRY FROM LANDSCAPE
- 12 COLOSSEUM
- 13 FLOATING BELVEDERE FOR SHOWS
- 14 SHALLOW POND AT PARKING LEVEL
- 15 AMPHI ACCESS AT PARKING LEVEL
- 16 SEATIGAL COVE
- 17 ROTUNDA

ARABIC COVE

- 18 MUGHAL COVE
- 19 CHESS BOARD
- 20 DUCK POND
- 21 BIRD FEEDING DECK
- 22 PAVILION

BRITISH COVE

- 23 PETS PARK
- 24 DENSE PARK
- 25 REFLEXOLOGY PATH

EGYPTIAN COVE

- 26 SAND RIVER
- 27 PICNIC PAVILION
- 28 BRIDGE
- 29 BAMBOO TRAILS
- 30 PYRAMID PLAYGROUND
- 31 GOLF IN MIRROR MAZE

ROMAN COVE

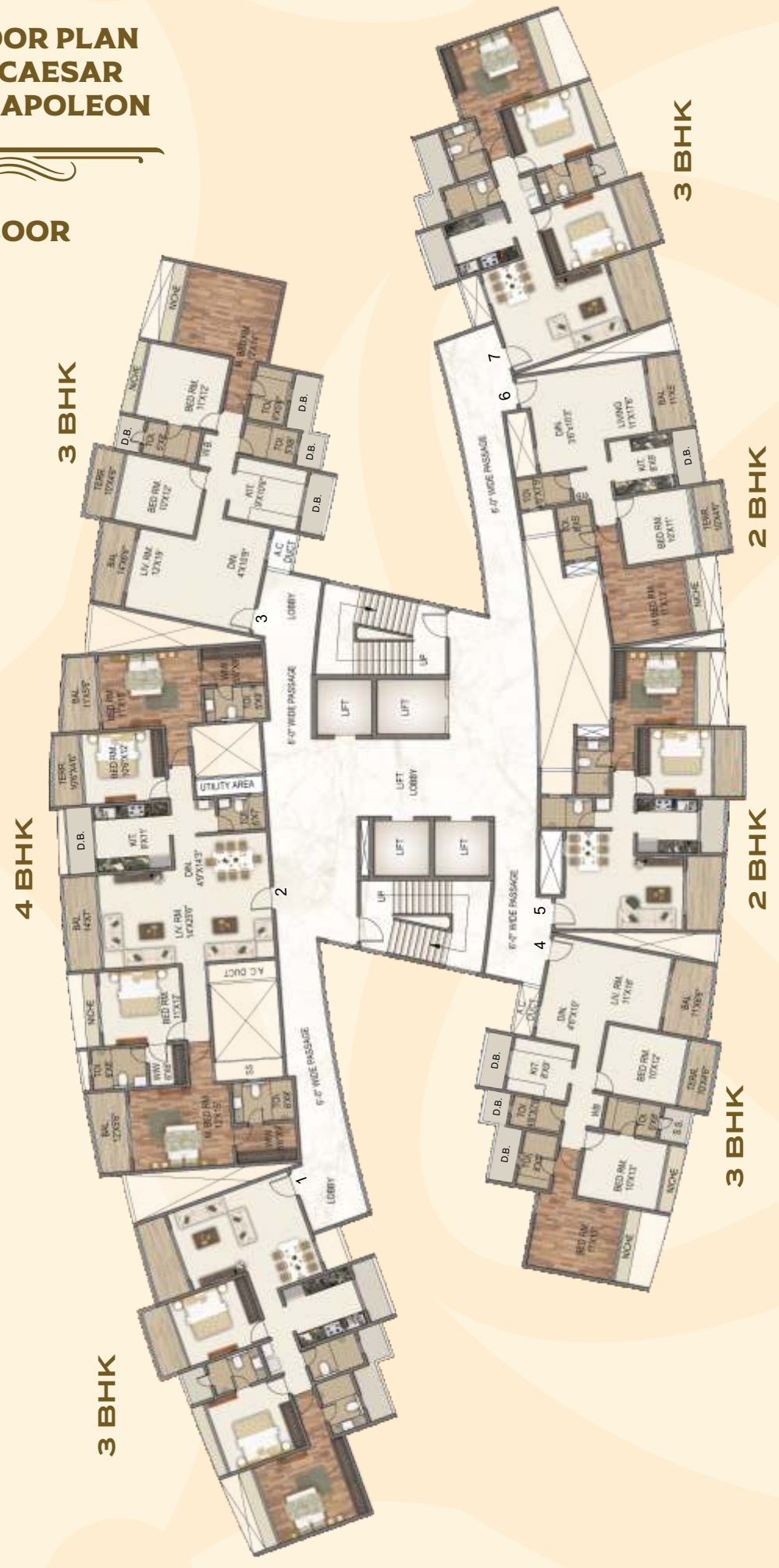
- 32 DECK
- 33 SANDY BEACH
- 34 WAVE POOL
- 35 WATER SLIDES PLATFORM
- 36 FUN POOL
- 37 AQUA GYM
- 38 RAIN DANCE ON SHIP
- 39 M.P.W.P.S.
- 40 BUBBLE POOL
- 41 JACUZZI WITH HOT JETS
- 42 LEISURE POOL
- 43 SUNKEN BAR
- 44 KIDS POOL COVERED WITH TENSILE ROOF
- 45 LAP POOL 50 M X 10 M
- 46 REFLECTION POOL
- 47 PARTY LAWN
- 48 PATHWAY
- 49 CLUB ENTRY DECK
- 50 DECORATIVE PLAZA
- 51 MEDITATION GAZEBO
- 52 LEISURE LAWN
- 53 THICK PLANTATION ALONG PARAPET
- 54 CLUB ATHENA
- 55 GROUP SEATS
- 56 DESIGN WALL WITH ARCHWAY TO PLAY-COURT

**TYPICAL FLOOR PLAN
TOWER - 1 - CAESAR
TOWER - 3 - NAPOLEON**

EVEN FLOOR

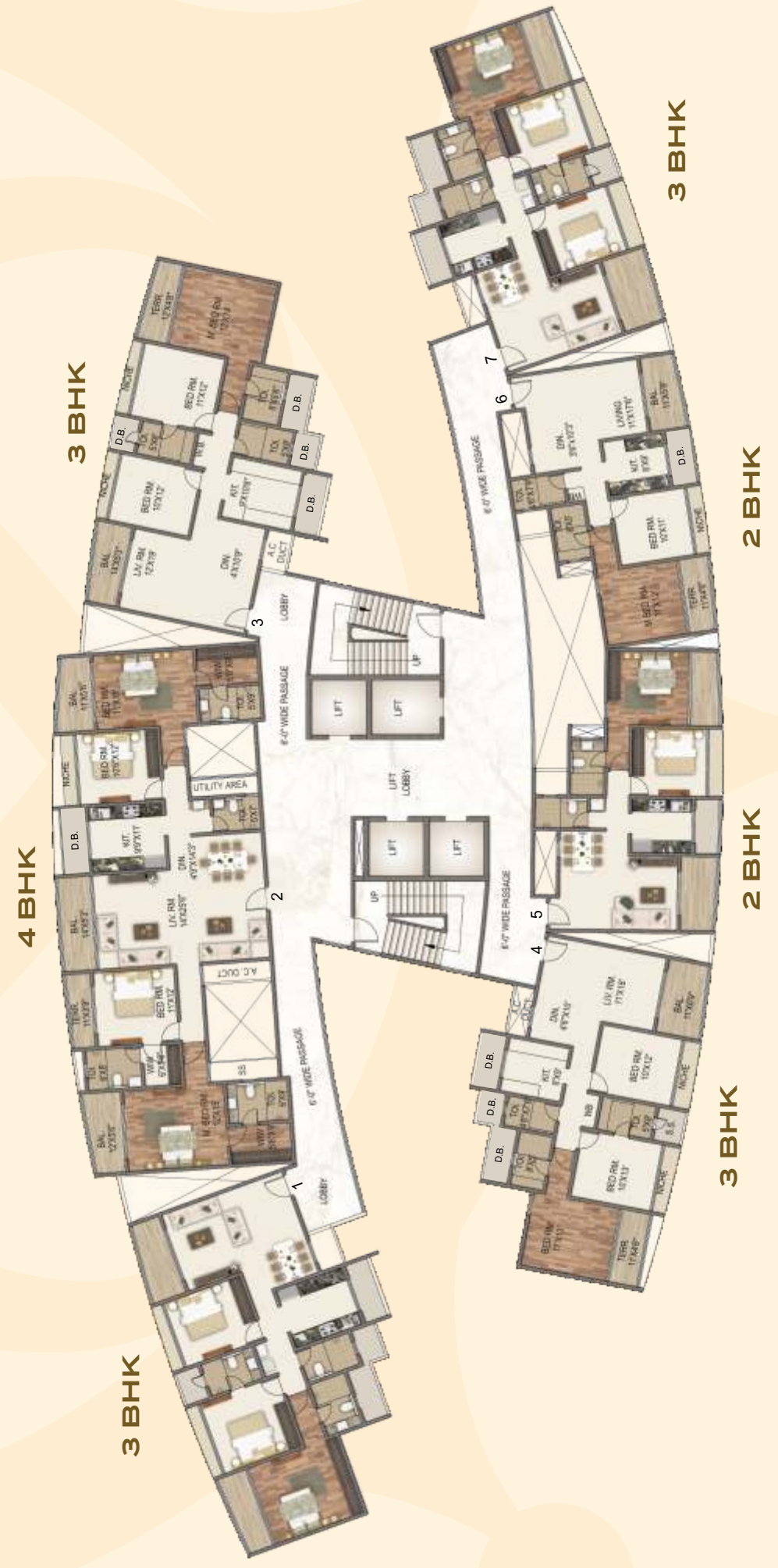
ODD FLOOR

HILL VIEW



PODIUM VIEW

HILL VIEW



PODIUM VIEW

**TYPICAL FLOOR PLAN
TOWER - 2 - ALEXANDER**

EVEN FLOOR

ODD FLOOR

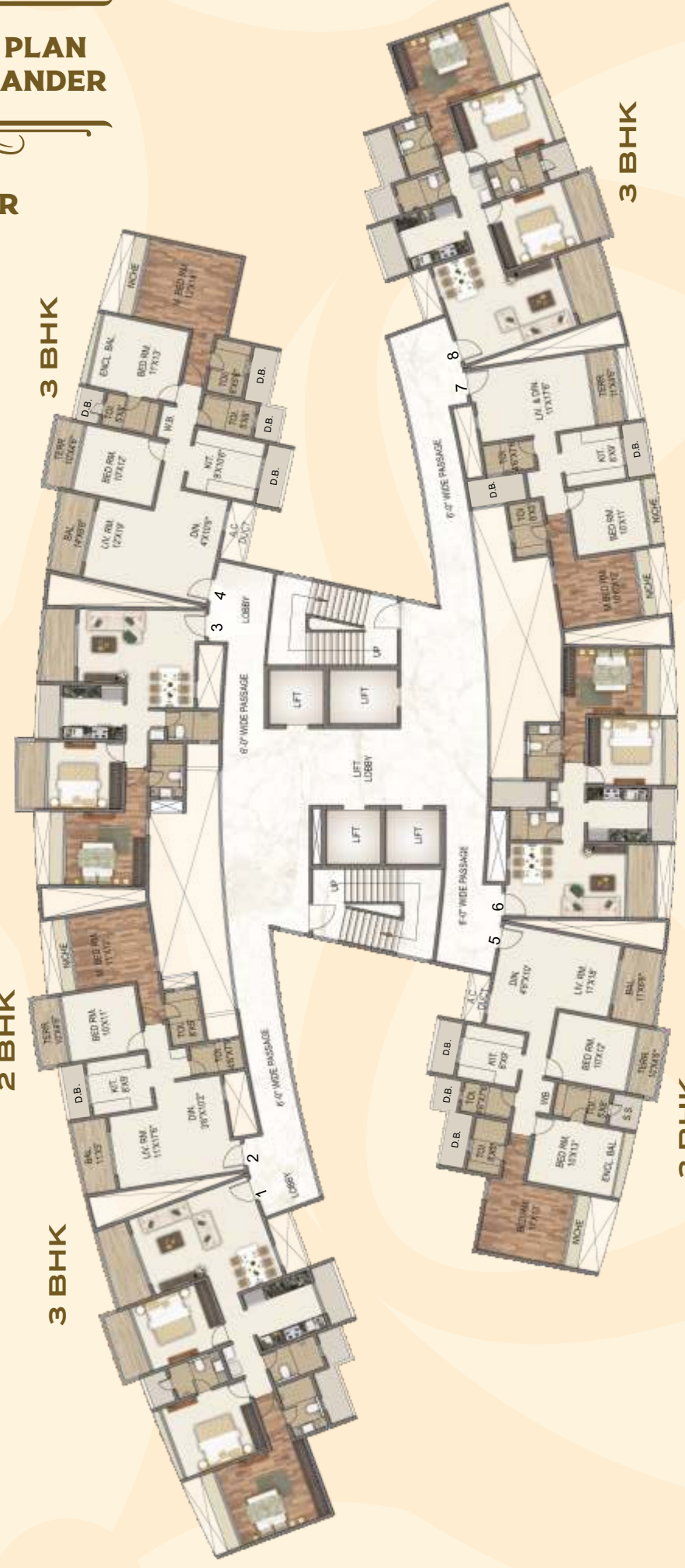
HILL VIEW

2 BHK

2 BHK

3 BHK

3 BHK



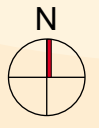
3 BHK

2 BHK

2 BHK

3 BHK

PODIUM VIEW



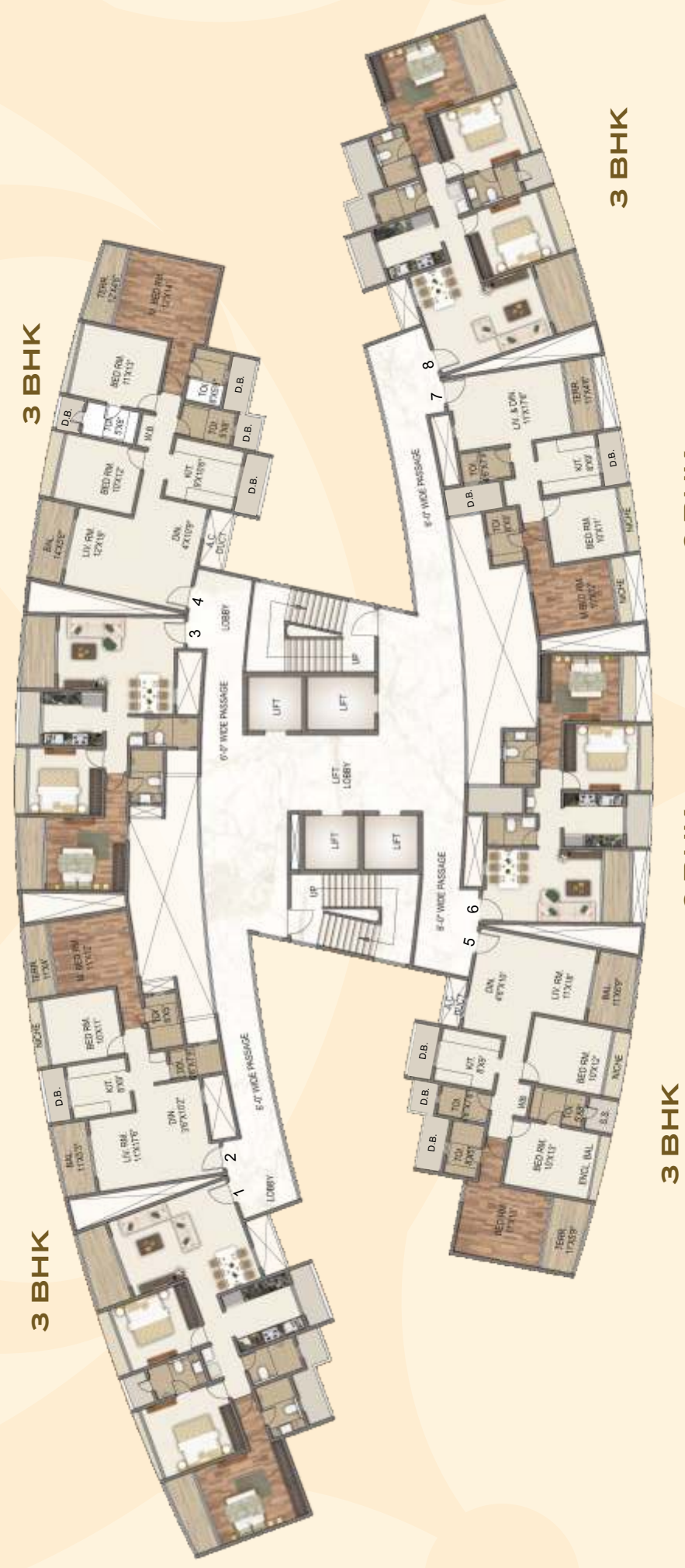
HILL VIEW

2 BHK

2 BHK

3 BHK

3 BHK



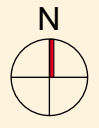
3 BHK

2 BHK

2 BHK

3 BHK

PODIUM VIEW



TYPICAL FLOOR PLAN
TOWER - 4 - CLEOPATRA

EVEN FLOOR

PODIUM VIEW

2 BHK

2 BHK

3 BHK

3 BHK



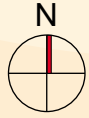
3 BHK

2 BHK

2 BHK

3 BHK

HILL VIEW



PODIUM VIEW

2 BHK

2 BHK

3 BHK

3 BHK



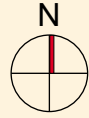
3 BHK

2 BHK

2 BHK

3 BHK

HILL VIEW



TYPICAL FLOOR PLAN
TOWER - 5 - CHARLES

EVEN FLOOR

PODIUM VIEW

4 BHK



3 BHK

3 BHK



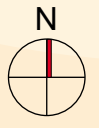
3 BHK

2 BHK

3 BHK

2 BHK

HILL VIEW



PODIUM VIEW

4 BHK



3 BHK

3 BHK



3 BHK

2 BHK

3 BHK

2 BHK

HILL VIEW





Artist's Impression



PARADISE MALL
KHARGHAR

PROJECT HIGHLIGHTS

- A WELL-PLANNED COMMERCIAL MALL WITH G+2 STOREYS
- LOCATED AT A PRIME LOCATION IN KHARGHAR
- ARCHITECTURALLY WELL-DESIGNED DESIGNER FAÇADE
- CONNECTED TO SAI WORLD EMPIRE RESIDENTIAL TOWNSHIP OF MORE THAN 2000 FAMILIES
- A WELL-PLANNED LAYOUT FOR MAXIMUM SPACE EFFICIENCY
- SMALL AND MEDIUM SIZED ENTERPRISES & ANCHOR SHOWROOMS
- 24*7 CCTV CAMERA SURVEILLANCE
- POWER BACK-UP FOR ALL SHOPS AND COMMON AREAS
- 14 FT. FLOOR HEIGHT

PARADISE GROUP
PERFECT PAST, PRESTIGIOUS PRESENT,
PROGRESSIVE FUTURE



It's been a long yet fruitful journey for Paradise Group. We began more than three decades ago with a clear aim of providing lavish and appealing spaces for all to dwell. We have come a long way after constructing more than 100 successful projects across Navi Mumbai as of today's date. This rendezvous of more than 32 years has made us a team of highly experienced construction experts. Keeping abreast with the latest technology and implementation of world-class techniques are the reasons why our structures are not just luxuriously designed marvels, but also perfect specimens of 'beauty with quality'.

With structures that are a beautiful mix of high-end luxuries and modern amenities and pose an elegant touch of culture, we have attempted to make this world a better place to live in. Our past has been glorious and made us proud in constructing 5 Million Sq. Ft. of land area that gave our customers best places to live an enhanced life. At present we are developing over 12.5 Million Sq. Ft. of land area across prime locations of Navi Mumbai and Mumbai like Kharghar, Panvel, Taloja, Ulwe, Dronagiri, Dombivali, Kalyan and Lonavala providing highly innovative, state-of-the-art construction for the classes as well as the masses. With an extremely progressive attitude, today we are forging ahead towards a bright future with a massive land bank of another 12.5 Million Sq. Ft. of through which we are committed to bring in a big change in present housing concepts. We are sure that our sincere efforts towards making this world a 'Paradise' will definitely become a pleasant reality in the near future.



Artist's Impression