

*khushiyon
ka pataa mil gaya*

Civitech

SAMPRIITI

**2/3/4 BHK | FURNISHED
HOMES AT SECTOR-77, NOIDA**

COMPLETE
POSITIVITY
TO ENSURE
HAPPY LIVING!

Civitech

SAMPRITI
2/3/4 BHK FURNISHED
HOMES AT SECTOR-77, NOIDA



Happy living begins when the people who stay in the house are happy within. Making everyone happy is a tough task but a few measures and considerations can make that possible. At Civitech Sampriti, everything has been well taken care of. Homes are positioned well with the plot being North facing which shall be a blessing in disguise for those living here. Being designed in compliance with Vaastu and Feng shui, these 2, 3 and 4 BHK homes enjoy peace & happiness, progress & prosperity, health & wealth and faith & spiritual development. While the two side open corner plot allows proper ventilation, maximum sunlight & fresh air. To top it all, the modern amenities and facilities enhance the lifestyle, make your life complete – the reason behind why the homes are named 'Sampriti'.



Tatva CLUB

At Tatva Club, we capture the essence of fulfillment at the recreational centers where you are welcomed for rejuvenation. It will provide you with the perfect break from your everyday schedule and will allow you to revive at its highly equipped gymnasium, swimming pool, stress buster gaming activities and a huge yoga & meditation center. Be it the most important days of your life or parties with friends and family, rejoicing the new beginnings or to celebrate life, we have taken care of all your festivities. The Tatva Club comprises of a big air conditioned party hall with state-of-the-art designing and all the ultramodern facilities.

Swimming Pool, Health Spa, Indoor and Outdoor Games, Skating Rink, Jogging Track, Yoga and Meditation, Amphitheatre, Badminton and Small Basketball Court, Cricket Practice Net, Lawn & Table Tennis, Billiards Room, Carom & Card Room

THE TEAM WITH A STRONG VISION AND MISSION!

Civitech Housing India Pvt. Ltd. came into existence in 1995, since then the Group has made many landmarks. The Group's activities branch out to real estate development, construction, facility management and infrastructure development. The Group believes that success is sure, when a concrete commitment lies behind a dream and this fact is quite evident in all its projects.

The company has always been aggressive in pushing the boundaries in property development and has several housing projects to its credit. Its projects are distinguished by their high quality and the unique manner in which they create an ideal living and working environment.

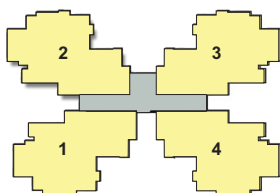
The Group aspires to set new standards and is steadily growing and developing lacs of sq. ft. of residential complexes in NCR. In its series of success the group has projects like Civitech Florencia, Elegant Floors and Valencia Homes that have set a benchmark for others to follow.

Civitech
SAMPRIITI
2/3/4 BHK FURNISHED
HOMES AT SECTOR-77, NOIDA

FLOOR PLANS

TYPE-1, 4BHK + STUDY Super Area 2380 sq. ft.

- 4 Bedrooms
- Study
- 4 Toilets
- Dress
- Drawing Room
- Dining
- Kitchen
- Utility
- Store
- Balconies

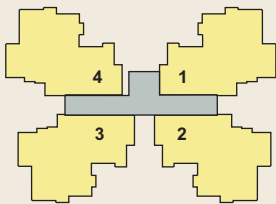


TOWER-A

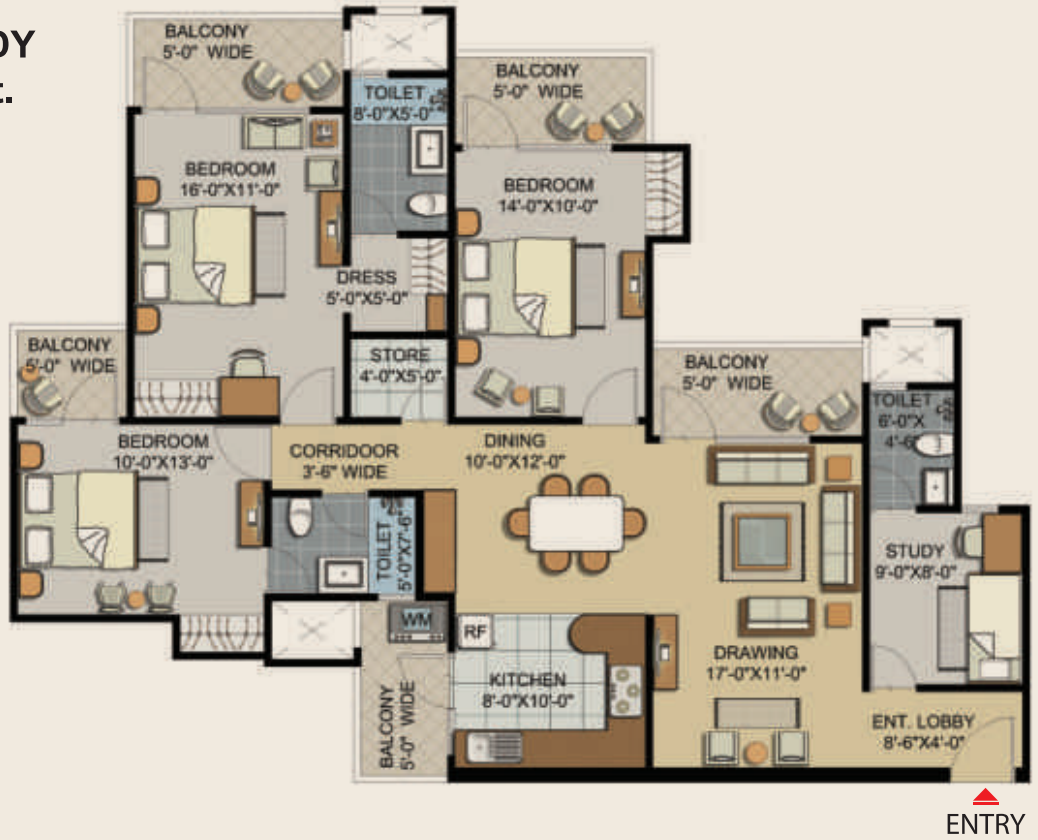


TYPE-2, 3BHK + STUDY
Super Area 1885 sq. ft.

- 3 Bedrooms
- Study
- 3 Toilets
- Dress
- Drawing Room
- Dining
- Kitchen
- Utility
- Store
- Balconies



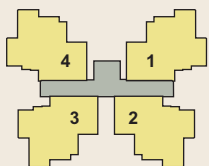
TOWER- B & H



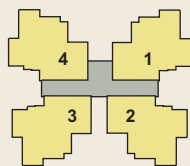
— FLOOR PLANS —

TYPE-3, 3BHK-i
Super Area 1625 sq. ft.

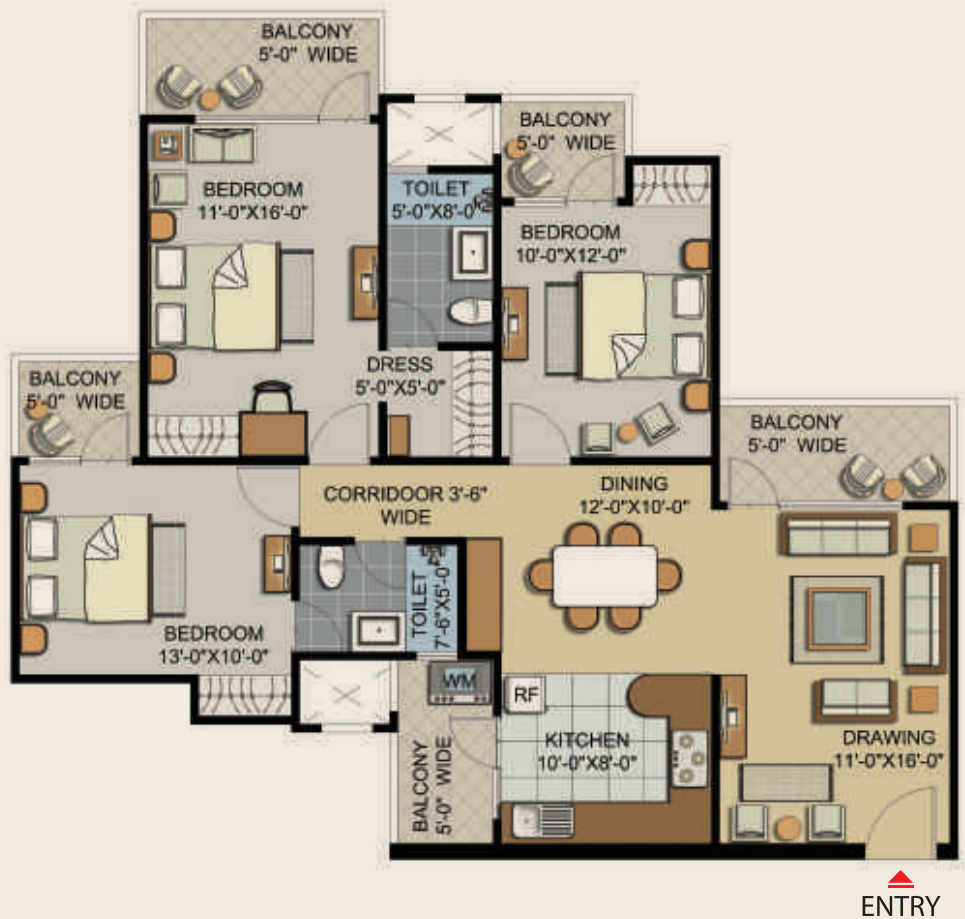
- 3 Bedrooms
- 2 Toilets
- Dress
- Drawing Room
- Dining
- Kitchen
- Utility
- Balconies



TOWER- F & G

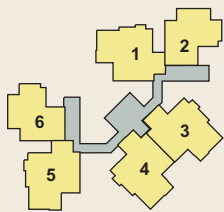
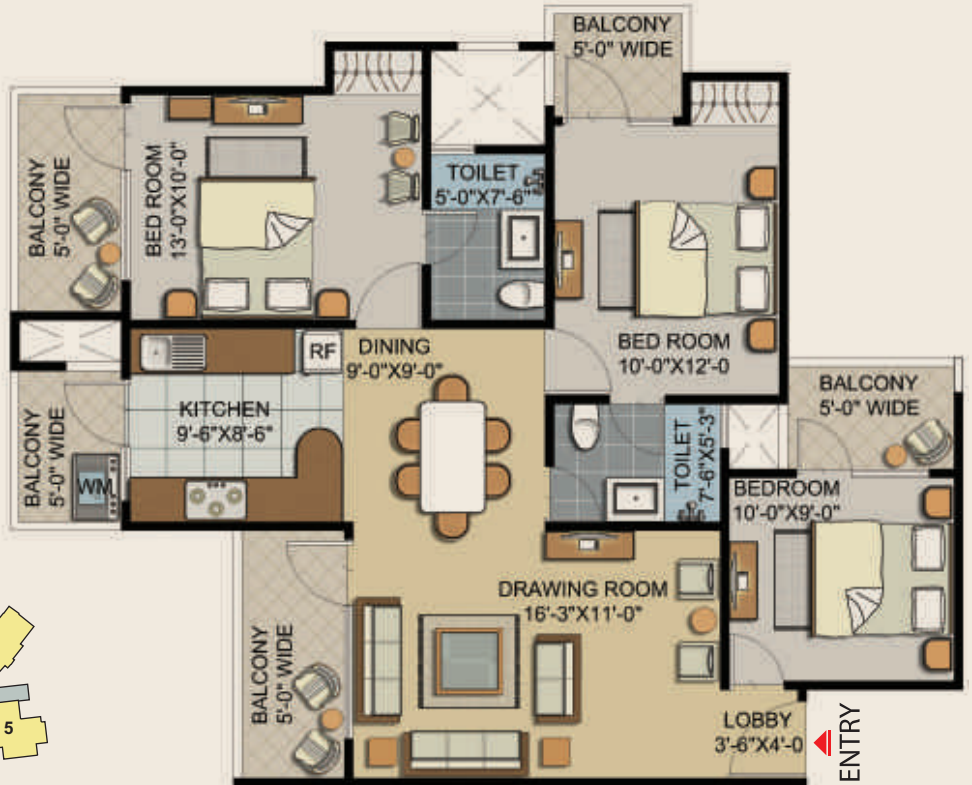


TOWER- C

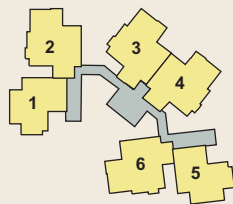


TYPE-4, 3BHK-ii
Super Area 1370 sq. ft.

- 3 Bedrooms
- 2 Toilets
- Drawing Room
- Dining
- Kitchen
- Utility
- Balconies



TOWER- E

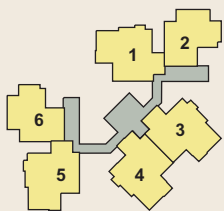


TOWER- D

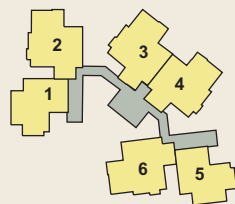
FLOOR PLANS

TYPE-5, 2BHK
Super Area 1135 sq. ft.

- 2 Bedrooms
- 2 Toilets
- Drawing Room
- Dining
- Kitchen
- Utility
- Balconies



TOWER- E



TOWER- D

SITE PLAN



45 m WIDE ROAD

M.P. GREENS

M.P. GREENS

OTHER'S PROPERTY

OTHER'S PROPERTY

45 m WIDE ROAD

LEGEND

- | | | |
|--|----------------------|---------------------------|
| 1. Entry/Exit for Housing | 8. Drop off | 16. Net Cricket Pitch |
| 2. Club | 9. Spill-Out | 17. Half Basketball Court |
| 3. Swimming Pool with Deck | 10. Ramps | 18. Badminton Court |
| 4. Commercial Complex with Front Plaza | 11. Arena | 19. Tennis Court |
| 5. Water and Palm Plaza | 12. Jogging Track | 20. Volley Ball Court |
| 6. Party Lawn | 13. Skating Rink | 21. Sand Pit |
| 7. Manicured Greens | 14. Exercise Station | 22. Children Play Area |
| | 15. Yoga Station | |



All layouts, information, conditions are only indicative & some of them can be changed at the discretion of builder/architect, these are conceptual & constitute no legal offerings. 1 Sq. Mtr. = 10.764 Sq. Fts.

FEATURES FOR A MODERN LIFESTYLE!

SPECIAL FEATURES:

- Corner plot, 45 mtr. road on two sides
- North East Facing • 80% open green area
- Central Garden • Leading malls, schools and hospitals in close proximity • Rain water harvesting
- Kids play area

VAASTU AND ECO-FRIENDLY LAYOUT

PROJECT HIGHLIGHTS:

- Earthquake resistance structure • Energy efficient housing complex • Convenient shopping area for daily needs
- Intercom Facility in all flats connected to security control
 - Main entrance provided with steel door for security
- Double Hi-Speed Lift and Double Staircase for every Tower
 - Internet Wi-Fi • 100% power backup • 24 hrs. water supply • Multi-level security • Reserve Car Parking



SPECIFICATIONS THAT SUPPORT A GOOD LIFESTYLE!

SUPER STRUCTURE

- Earthquake Resistant R.C.C Structure as per I.S Code, Designed by highly experienced structural engineers
- 10-11 ft. floor height

FLOORING

- Branded vitrified tiles in all rooms
- Anti-skid ceramic tiles flooring in toilets and balcony

DOOR AND WINDOWS

- Wooden outer doors and windows
- All internal doors and windows are made of well seasoned imported hardware
- Door shutters are factory made waterproof flush doors

KITCHEN

- Complete modular kitchen
 - Fitted with granite top and cabinets
 - R.O. System
 - Electric Chimney
 - Double bowl stainless steel sink in every unit

ELECTRIC FITTINGS

- Complete electric fittings done with best quality fans and fancy lights in all the rooms

WATER SUPPLY

- Underground water supply and overheard water tanks with pumps for 24 hours water supply

TOILETS

- Ceramic glazed tiles on wall up to door level
- Fitted with branded chinaware and CP fittings

INTERNAL FINISHING

- Plaster of Paris punning on all walls and ceilings finished with branded plastic paints of pleasing shades

EXTERNAL FINISHING

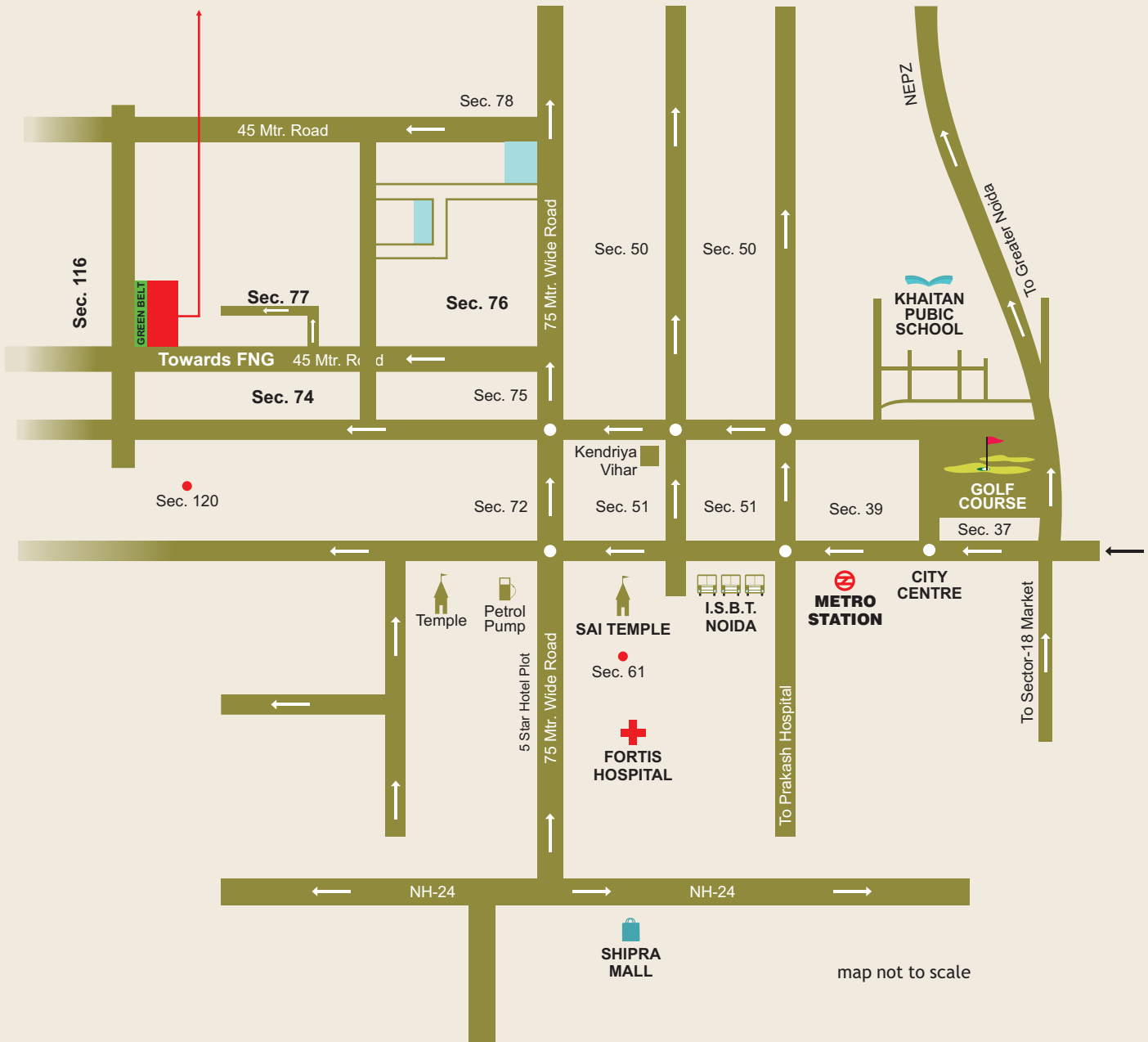
- Exterior face of building to be finished with branded waterproof paint of pleasing shades

APPROACHES

- Double high speed lift and two staircases in every tower
- 24 hours water supply
- Plaster of Paris punning on all the walls and ceiling, finished with branded plastic paints of pleasing shades
- Exterior finish of the building with branded waterproof paints

ROAD MAP

Civitech
SAMPRITI
 2/3/4 BHK FURNISHED
 HOMES AT SECTOR-77, NOIDA



All layouts, information, conditions are only indicative & some of them can be changed at the discretion of builder/architect, these are conceptual & constitute no legal offerings. 1 Sq. Mtr. = 10.764 Sq. Fts.

Location Advantages

- 0.5 km. from Sector-50 • 2.0 km. from Sai Mandir • 2.5 km. from Fortis Hospital • 2 min. drive from Sector-32 Metro Station • 15 mins. drive from DND Flyway
- 10 mins. drive from Sector-18, Market

Civitech
 Spaces for Happiness

Civitech Developers (P) Ltd.

Corporate Office: Civitech House, H-71, Sector-63, Noida, 201 301 • Tel.: 0120-4213239, 4213240
 Site Office: GH-02 C, Sector-77, Noida • email: info@civitech.in • www.civitech.in

Sales Enquiry: +91-7838505050