



JR
STRR ENCLAVE

NEAR HOSKOTE, WHITEFIELD EXTENSION, BENGALURU

An affordable boutique enclave
with high quality infrastructure



Actual shot at project

Infrastructure



40FT WIDE
MAIN ROAD



ORNAMENTAL
STREETLIGHTS



ELECTRICITY
TRANSFORMERS



UNDERGROUND
ELECTRICITY CABLING



VAASTU
COMPLIANT



TREE LINED
AVENUES



45% OPEN
SPACE



REINFORCED
CONCRETE DRAINS



LANDSCAPED
PEDESTRIAN NETWORK

Amenities



Children's Play Area



Multi-play Court



Congregation Spaces

JR STRR ENCLAVE

JR STRR Enclave is a boutique township developed with high quality infrastructure and amenities by JR Housing Developers (P) Ltd - Pioneers in township development since 1995, headed by its Managing Director Sri.S.Jagadeeswara Reddy, who is also the Vice President of Karnataka Land Developers Association.

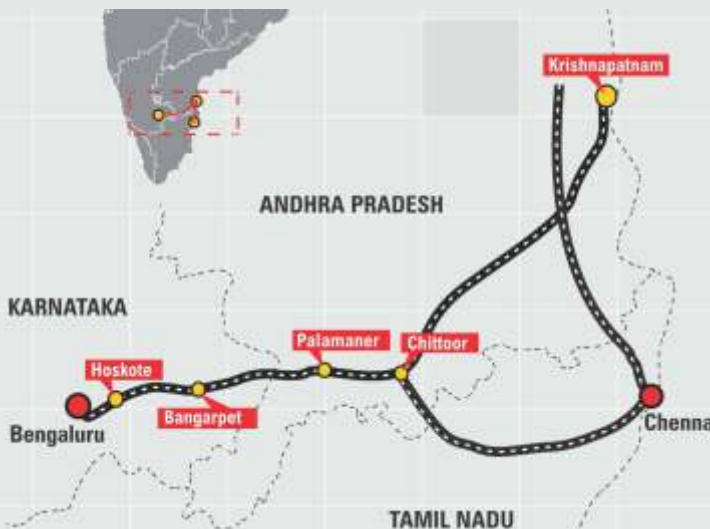
JR STRR Enclave is located close to JR Valley and JR Eastfields, which are part of JR Housing's 200 Acres Mega Township situated in the outskirts of Whitefield which is Bangalore's largest Tech Hub. It is just 8 km away from Whitefield Metro station and Suburban/Railway station which connects to all parts of Bangalore. The State Government has recently allocated Rs.1000 Crore of their contribution for development of Suburban rail system. JR STRR Enclave is situated 9 km away from Hope farm junction & 1.8 km off NH 207. It is directly connected to upcoming 300ft Town Ring Road around Hoskote and only 4 km away from NH 4 old Madras road. The project is only 2 km away from proposed BDA peripheral ring road (PRR) which the present State Government is keen to implement and only 3 km before Bangalore Chennai Industrial Corridor which is nearing completion.

JR STRR Enclave is located in prime residential zone which is only 3 km aerial distance from luxury villa townships namely Adarsh Serenity, Chaitanya Samarpan and Sobha Galleria.

Located close to Entertainment, Educations and Hospital hubs, it is only 8 kms to Brigade Orion Uptown mall, within 5 kms radius of International schools like DPS, Windmore & Polaris and 5 kms radius from popular hospitals.

BANGALORE-CHENNAI INDUSTRIAL CORRIDOR (BCIC)

Chennai Bengaluru Industrial Corridor is planned to achieve accelerated development and regional industry agglomeration in the states of Tamil Nadu, Karnataka and Andhra Pradesh. These regions are proposed to be self-sustained nodes with world-class infrastructure, road and rail connectivity for freight movement to and from ports and logistics hubs, served by reliable power, quality social infrastructure and provide a globally competitive environment conducive for setting up businesses.



SATELLITE TOWN RING ROAD

204 KM
The length of the project

12
Towns to be connected

Rs.6,000 Cr
Project cost

6
Total number of lanes

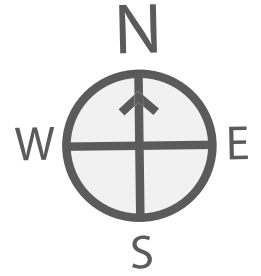
331
Villages to be linked

1,019.52 SQ KM
Extent of planning area



Location Map

(Not to Scale)



Malls & Entertainment

BRIGADE ORION UPTOWN MALL	8 KM
FORUM VALUE MALL	14 KM
NEXUS MALL WHITEFIELD	14 KM



Transport Hubs

HOSKOTE TOWN	3 KM
WHITEFIELD RAILWAY STATION	8 KM
WHITEFIELD METRO STATION	8 KM
WHITEFIELD (HOPE FORM Jn)	11 KM
KEMPE GOWDA INT'L AIRPORT	35 KM



Schools / Colleges

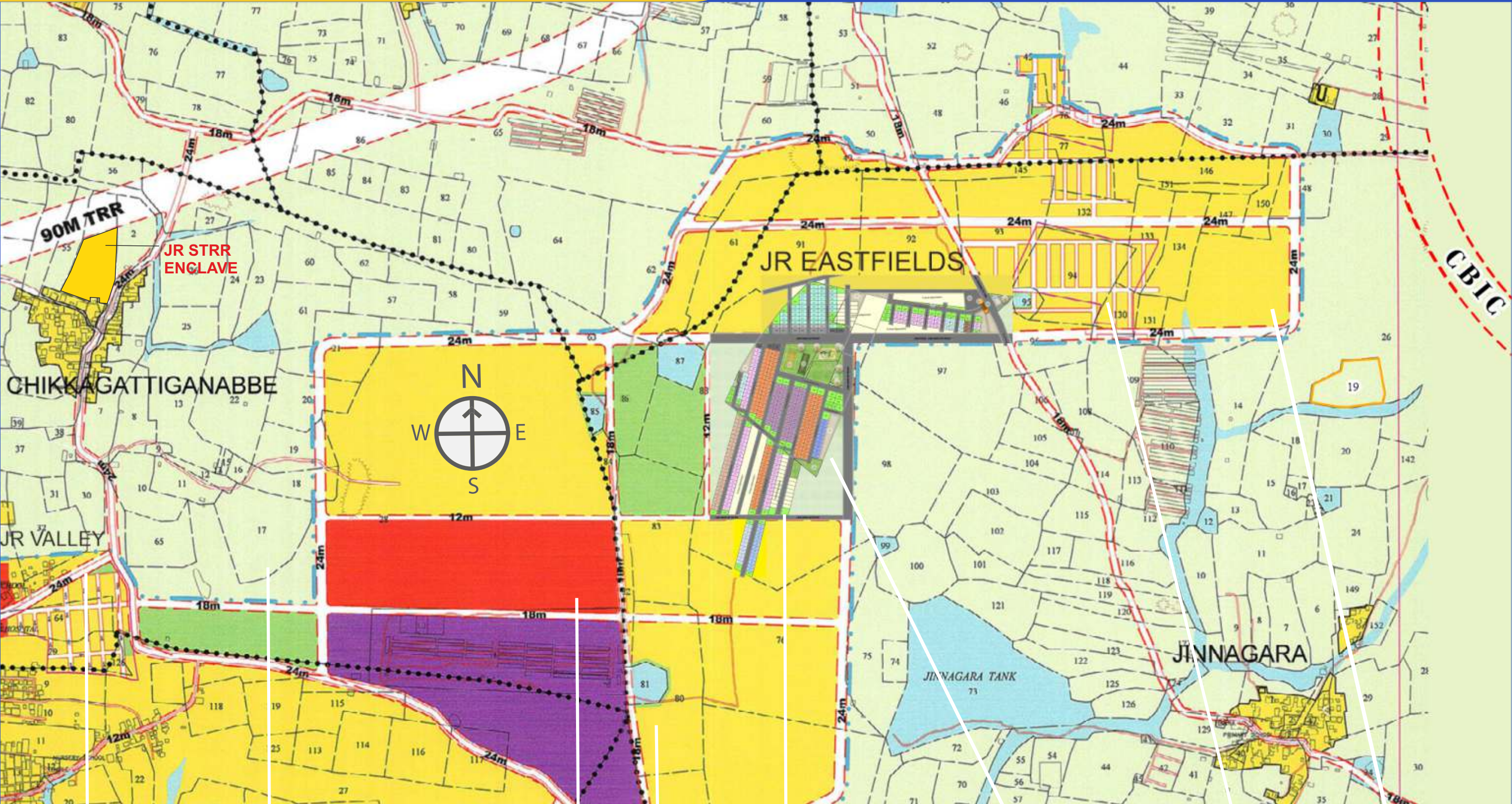
DELHI PUBLIC SCHOOL (EAST)	5 KM
WINMORE ACADEMY	4 KM
MVJ ENGINEERING COLLEGE	9 KM
MVJ MEDICAL COLLEGE	9 KM
THE POLARIS INT'L SCHOOL	4 KM



Hospitals

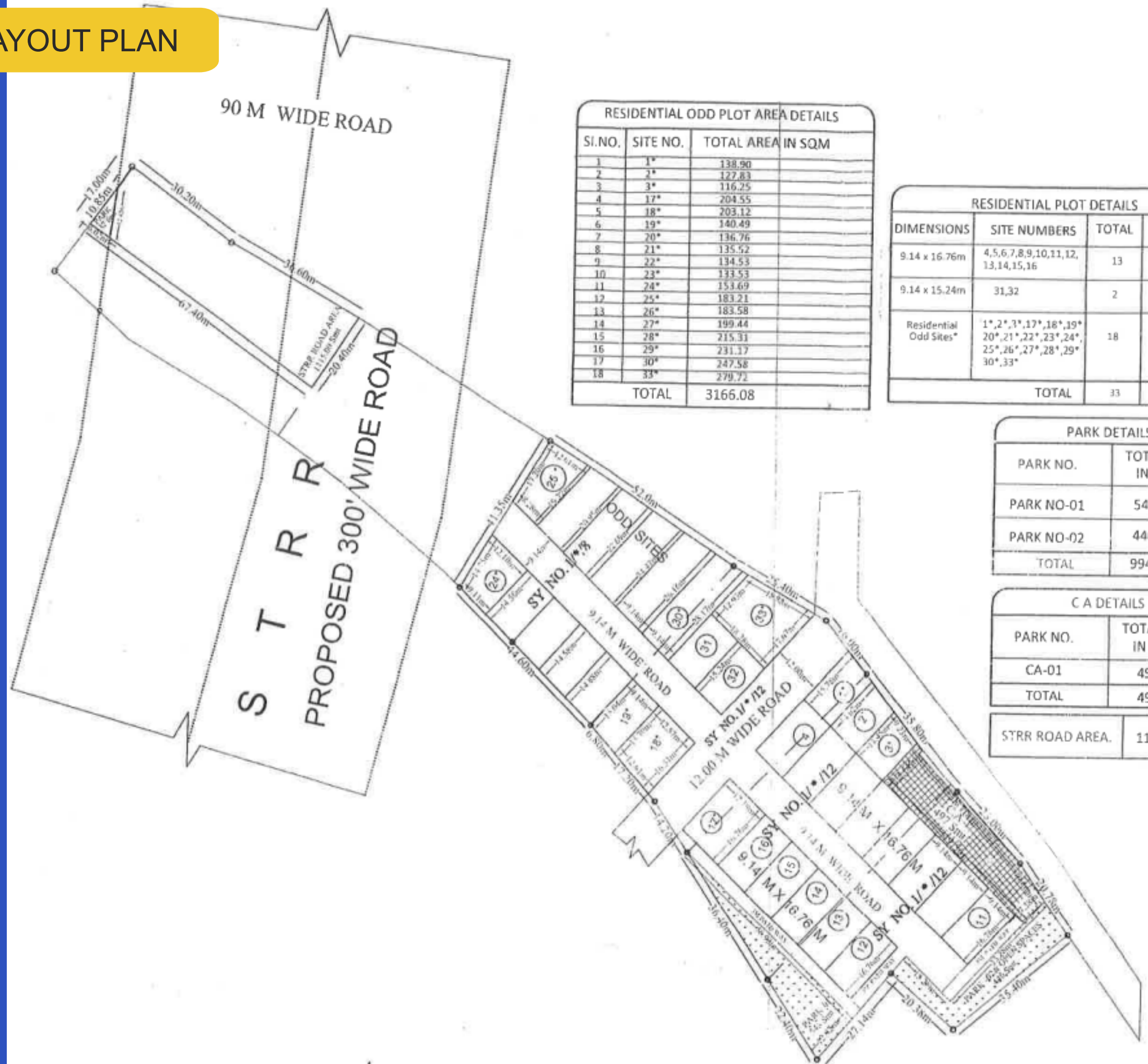
MVJ HOSPITAL	8 KM
EAST POINT HOSPITAL	15 KM
SRI SATHYA SAI HOSPITAL	14 KM

STRRPA (BMRDA) APPROVED MASTER PLAN



JR Housing's completed Project Extent: 12 acres	JR Luxury Villas Extent: 50 acres Status: Upcoming	JR Lifestyle Club Extent: 1.0 acre Status: Upcoming	JR Lifestyle Villas Extent: 15 acres Status: Upcoming	JR Eastfields (Phase-1) Extent: 28.50 acres Status: Approved	JR Eastfields (Phase-2) Extent: 35 acres Status: Upcoming	JR Housing's completed Project Extent: 30 acres	Extension of completed project Extent: 25 acres
---	---	--	--	---	--	---	---

STRRPA APPROVED LAYOUT PLAN



RESIDENTIAL ODD PLOT AREA DETAILS		
SI. NO.	SITE NO.	TOTAL AREA IN SQM
1	1*	138.90
2	2*	127.83
3	3*	116.25
4	17*	204.55
5	18*	203.12
6	19*	140.49
7	20*	136.76
8	21*	135.52
9	22*	134.53
10	23*	133.53
11	24*	153.69
12	25*	183.21
13	26*	183.58
14	27*	199.44
15	28*	215.31
16	29*	231.17
17	30*	247.58
18	33*	279.71
TOTAL		3166.08

RESIDENTIAL PLOT DETAILS			
DIMENSIONS	SITE NUMBERS	TOTAL	TOTAL AREA IN SQM
9.14 x 16.76m	4,5,6,7,8,9,10,11,12,13,14,15,16	13	1991.34
9.14 x 15.24m	31,32	2	278.58
Residential Odd Sites*	1*,2*,3*,17*,18*,19*,20*,21*,22*,23*,24*,25*,26*,27*,28*,29*,30*,33*	18	3166.08
TOTAL		33	5436.00

PARK DETAILS	
PARK NO.	TOTAL AREA IN SQM
PARK NO-01	548.00
PARK NO-02	446.00
TOTAL	994.00

C A DETAILS	
PARK NO.	TOTAL AREA IN SQM
CA-01	497.00
TOTAL	497.00
STRR ROAD AREA.	1127.72 SQM

Why invest in land?



A plot offers you the freedom to build your home the way you want and when you want



Today's investment will transform into tomorrow's family heirloom



Non-volatile, unlike other asset classes



High appreciation potential



Secure and tangible investment

Completed Villa Project on Sarjapur road Next to Wipro - JR Greenwich



Actual photos of JR Greenwich

Why invest in JR Housing ?

- Hassle-free documentation and clear titles
- Assured 1 year maintenance
- Trust committed to you
- Quality that is built to last
- Risk-free investment with good capital appreciation



25+Years of
Experience



20+ Projects
Completed



6,000 +
Happy
Customers



16+ Million Sqft
Transformed

Completed & Ongoing Plotted Development Near E-City, in South Bangalore - JR Urbania



Actual photos of JR Urbania

Future developments in East Bangalore

- The ongoing Chennai Bengaluru Industrial Corridor (CBIC) is planned to achieve accelerated development and regional industry agglomeration in the states of Tamil Nadu, Karnataka and Andhra Pradesh.
- Upcoming BMRDA's 300ft wide Satellite Town Ring Road and BDA's Peripheral Ring Road close to the project.
- The Aero IT SEZ being built in Budigere will employ 100,000 people. Mahindra & Mahindra Aerospace is also being established at Hoskote.
- Seamless connectivity to Bangalore International Airport thru National Highway



JR HOUSING DEVELOPERS PRIVATE LIMITED

CORPORATE OFFICE:

"UB ELEGA" # 90, 2nd Floor, Outer Ring Road,
Marathahalli, Bangalore - 560 037

SITE OFFICE:

Plot no.1, JR Valley, Doddagattiganabbe village,
Hoskote Taluk, Bangalore East

Mobile: +91 9590 616 616

Email: info@jrhousing.com

www.jrhousing.com