



**Apeksha Imperial** - Near Don Bosco School, Naigaon East.

*Add more happiness to life*

Adding more flair to the Naigaon skyline and more charm to modern living is **Shree Ram Heights**, a brand new offering by Shree Ram Realty, A multistoried striking tower, this architectural splendor plays host to plenty residential and shopping experiences. Whether it's cozy solace of beautiful crafted home or the relaxed comfort of easy shopping, the project scores high with well planned shops at ground level and thoughtfully planned 1 BHK flats on higher level. With impeccable construction that add to maximum utilization of space and smart designs that make living spaces more flexible with sufficient light and ventilation and ideally practical with modern amenities, the project relays every home buyers fantasy.

A project by



**SHREE RAM  
REALTY**

BUILDERS & DEVELOPERS

**Head Office** : Shop No. 33, Latif Park, Poonam Shrushti, Opp. S. K. Stone Police Chowki,  
Mira Bhayander Road, Mira Road (E), Thane - 401 107.  
**Tel** : 022 2811 6161 **Mob** : 9082412351 / 9137234581  
Email : shreeramrealty@yahoo.com Web : www.shreeramrealty.com

<b>Architect</b> Abhay Raut Borivali (W)	<b>RCC Consultant</b> Kulkarni & Patel	<b>Legal Advisor</b> D. G. Naik	<b>Project Consultant</b> MAPS Consultant Rajesh Kateliya
--	---	------------------------------------	---

Note : The Developers reserve the right to change plans, specifications and features without prior notice or obligation, at their sole discretion and subject to approval to approval of Government authorities. Specifications, writup, internal layouts, plans and pictures shown in this booklet are only indicative. All renderings, floor plans, pictures and maps are the artist's conceptions and not actual depictions of the building, its walls, roadways or landscaping.

GALAXY ARTS : 9824169680



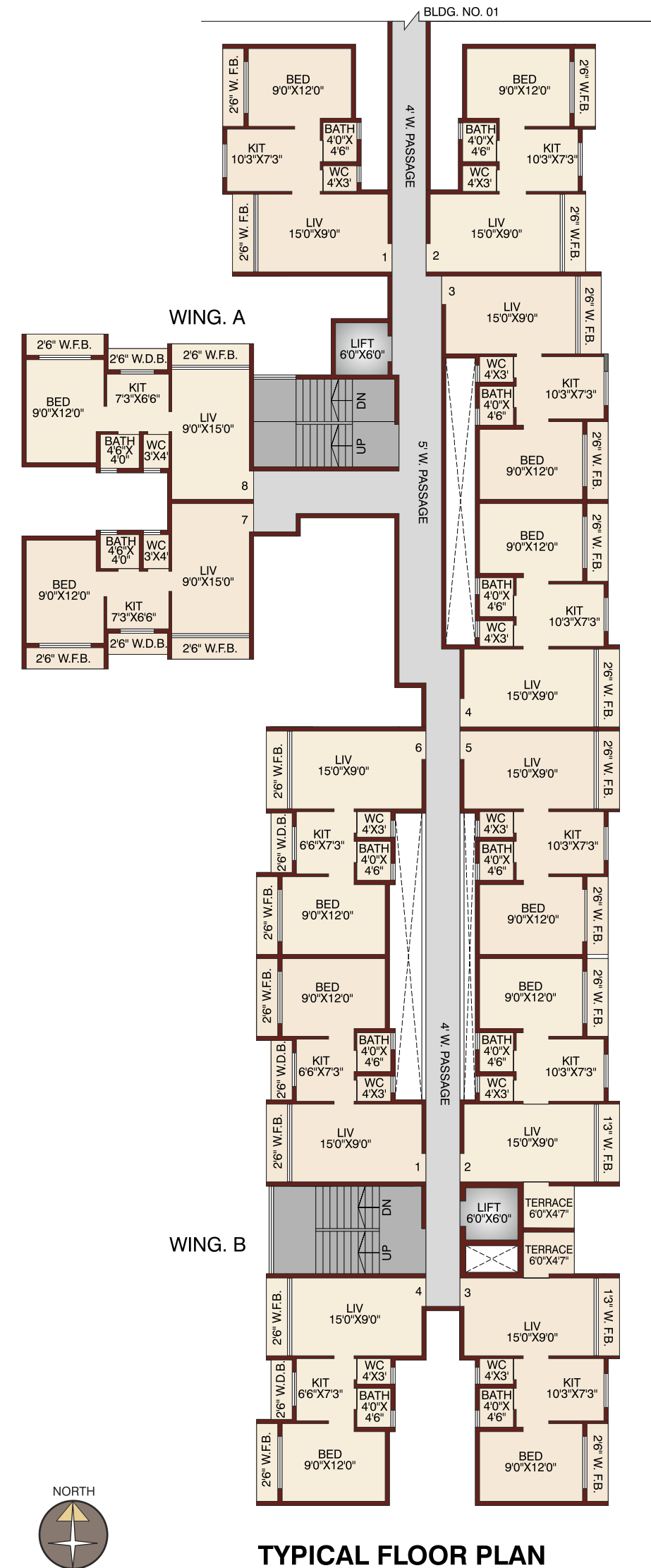
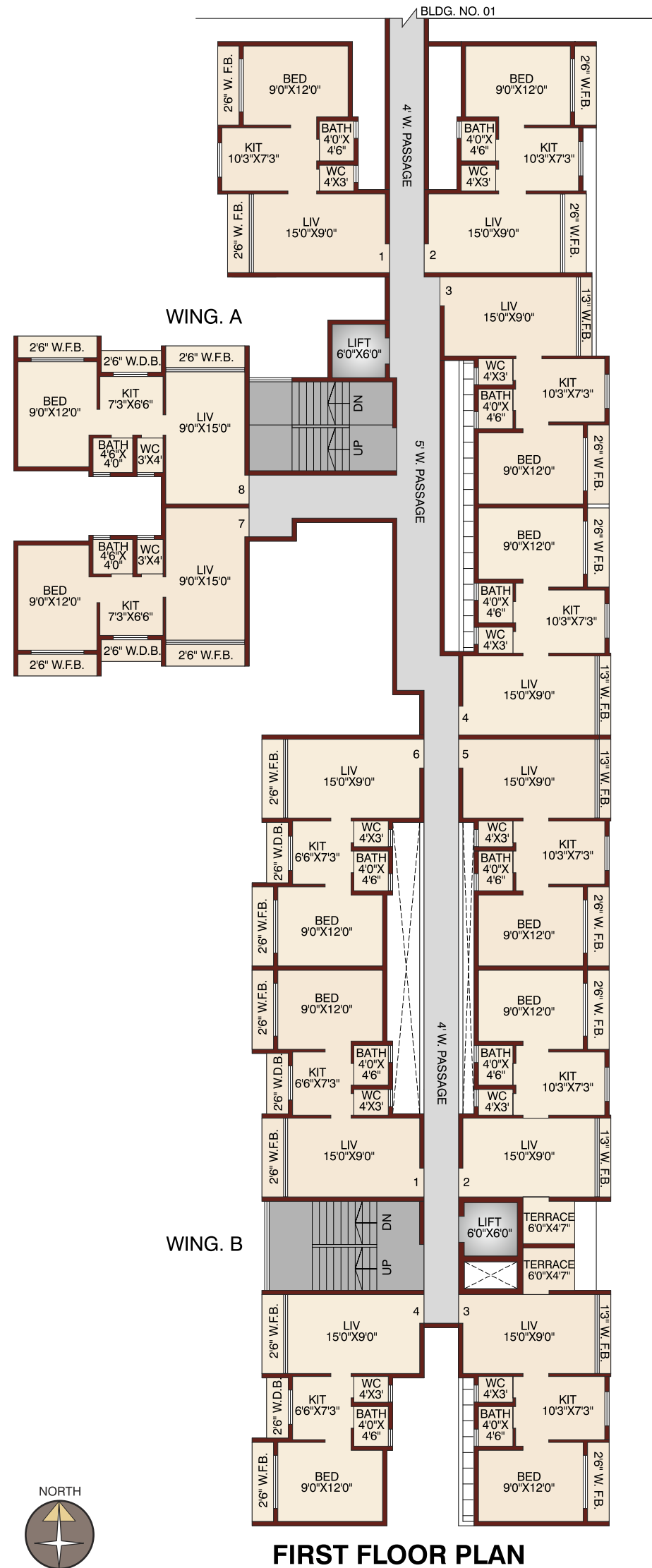
Luxury unlimited for lifetime



MahaRERA Registration No. : P99000003747  
<https://maharera.mahaonline.gov.in>

*Creating a higher standard*





## A paradise for your dreams



### Living Room :

32"x32" Vitrified tiles in all rooms.  
Anodized Sliding Windows with Mosquito Net.  
Adequate Concealed Electric points in all rooms with AC point.  
TV point in Drawing room.  
Main Door framed with Teakwood & flush door with necessary locking facilities.  
False ceiling in Living Room with provision for Strip Light.

### Additional Amenities :

Beautiful Elevation & Super Quality Construction.

Landscape Garden with Children play area.  
Ample Parking.  
CCTV monitoring in common areas.  
Branded Elevator for each wing.

### Kitchen and Dry Balcony :

Modular Kitchen.  
Granite Kitchen Platform with Branded Stainless Steel Sink.  
Glazed Tiles above Platform upto Beam Level.  
Electric Point & Provision for Water Purifier & Exhaust Fan.



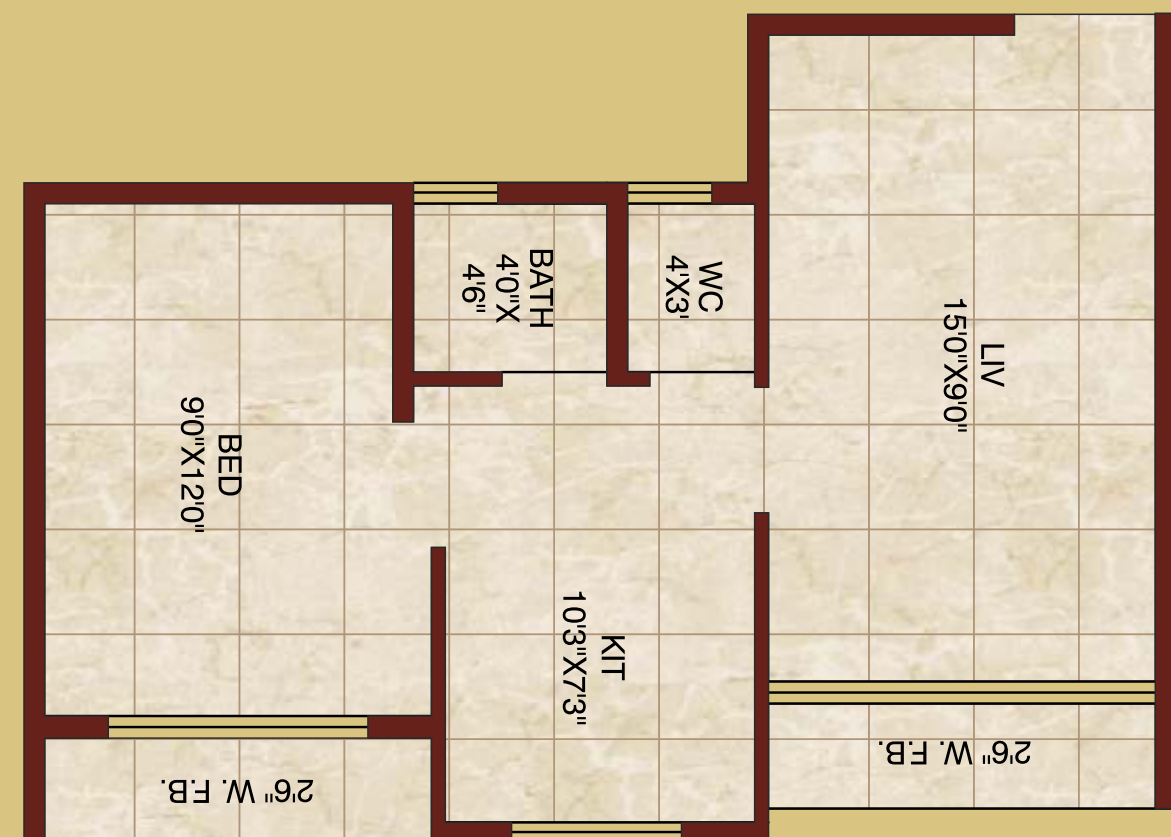
### Bedroom :

32"x32" Vitrified Flooring.  
Superior Quality Flooring in Bedroom.  
Cupboard Space in Bedroom.  
Electric Point Provision for AC  
Electric & Plumbing provision for Washing Machine in Bedroom FB



### Washroom :

W.C. & Bathroom with Branded Accessories.  
Anti skid flooring with full tiles in WC & Bathroom  
Geyser Point.  
Flush Tank.  
Provision for Exhaust Fan in WC  
Water Storage Tank.



1 BHK 2D PLAN