

Pioneer Urban Land and Infrastructure Ltd. is rapidly evolving to become a provider of premier lifestyles. For the last two decades, Pioneer Urban has been at the forefront of path breaking developments across Delhi NCR.

With a roster of innovative projects such as Nirvana Country, Greenwoods City, South City II under its belt, Pioneer Urban is fast becoming a name to reckon with. With Vista Villas, the company has also achieved the distinction of becoming the first one to introduce villas with landscaped greens.

People, places and experience are the ingredients for the recipe that makes Pioneer Urban what it is today. It is a name that stands for trust and reliance that is backed by a team of seasoned professionals including architects, engineers and marketing specialists, who deliver what they promise.

BESPOKE LUXURY

Pioneer Urban is founded on a vision that seeks commitment to a high quality in every single undertaking, recognizing the need of growth across the real estate industry with consumer centric approach. We have created lifestyle impressions and articulate residences that avail more than just spaces to live in.

For us the pride of success is efficiency, effectiveness and perfection. Taking care of quality and customer satisfaction, we provide you with the advantage of opulence with your touch to create your dream home. One such luxuriant living experiences will be at Araya. Keeping our heritage of high quality, we offer you the wonderland beyond your imagination. The time has come to embark you with the best of world class amenities.

I welcome you to take a look at an exceptionally grand launch pad of your desired comforts with a blend of the finest ambience.

Chairman
Manish Periwal



EXQUISITE
INDULGENCE



WELCOME TO ARAYA

Built with a sense of impeccable expertise that only comes after years of perseverance, Araya rises to achieve what has always eluded many - perfection. Araya, located in Gurgaon, Delhi NCR, gives you the ease of reach and a complete peace of mind.

Welcome to your home, welcome to Araya.





A PRIVILEGE RESERVED
FOR THE ELITE



YOUR PRIVATE RETREAT

An extension of your highly refined world, Araya promises the experience of impeccable and incomparable lifestyle. We invite you to savour the delight of living at this exclusive address. The Araya residences offer a unique opportunity to expand your lifestyle with a multitude of tasteful choices at your disposal.



FURNISHINGS PAST COMPARE

Designed to surpass expectations, Araya residences emulate uber contemporary feel, subtly manifested in the architectural style and choice of furnishing.

You are whisked up in a secure elevator, which alights into your private lobby. The burst of radiance from the double height ceilings takes your breath away, as you absorb every fine detail that has been lovingly crafted for you. Walk into your home and feel the spaces blend harmoniously around you.

From the finest marble to timber veneered wooden doors, European modular kitchen to imported wardrobes, thoughtful extravagance touches every aspect of your home.



THE FINER DETAILS

A private sanctuary awaits you at the ensuite bath in your master bedroom. With avant-garde features like jacuzzi, steam, enclosed rain shower, you can experience nirvana in complete privacy.

Complementing your luxurious lifestyle is a state-of-the-art spacious kitchen with all modern accessories and fittings that make cooking a simple pleasure to delve in.





Araya is designed for the modern connoisseur, where residents and their guests experience an unparalleled lifestyle.

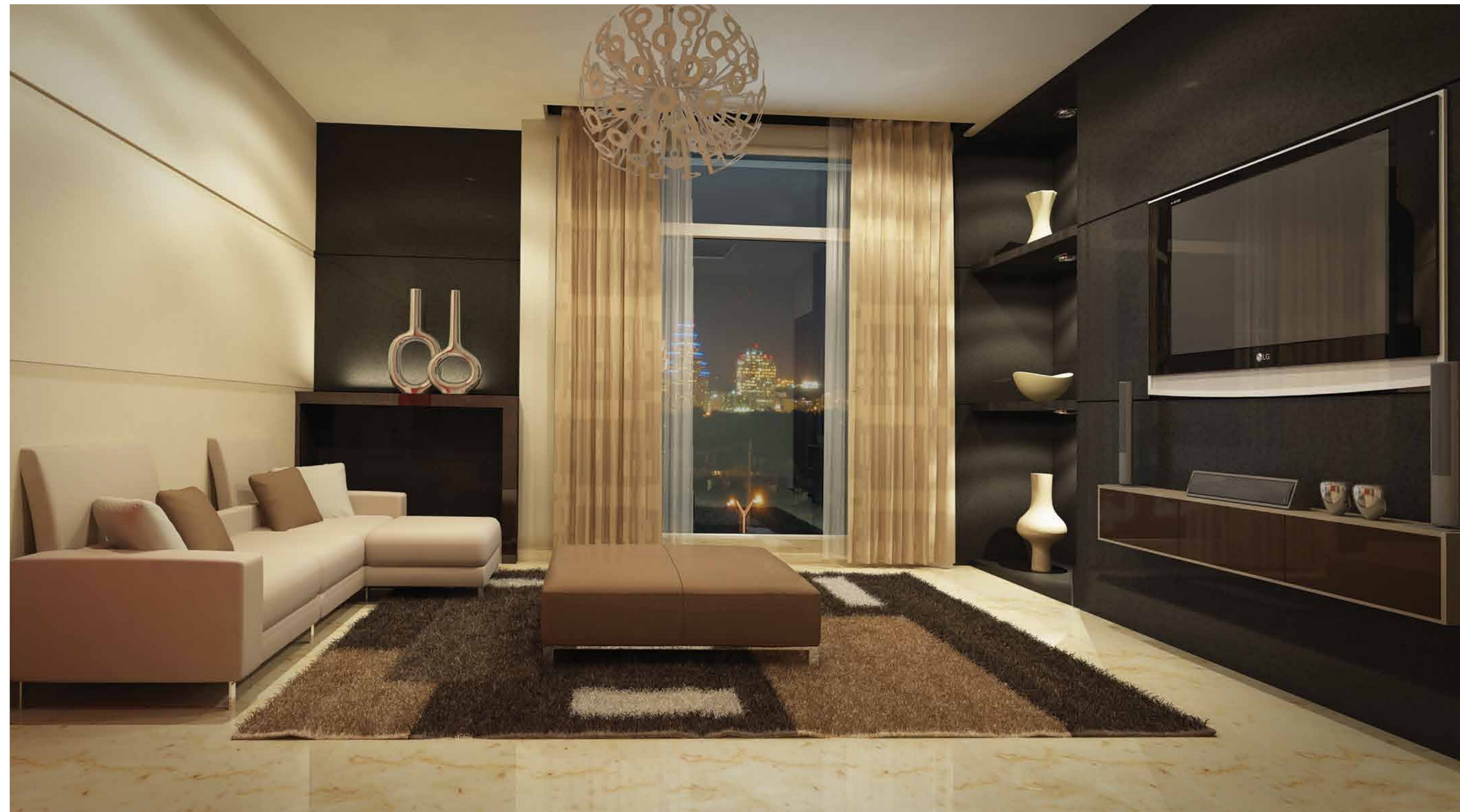
AMENITIES FOR A COMPLETE LIFE

Araya offers you distinctive conveniences that meet your individual needs. Our myriad in-house offerings provide you with every comfort you may require. From the lavish swimming and splash pools to the state-of-the-art gymnasium, world-class indoor squash courts to luxurious rejuvenating spa, an exclusive lounge to a chic restaurant, the beyond comparison residences bring all the plush facilities to pamper the best in you. The indulgence in a sumptuous lifestyle can just never stop here.



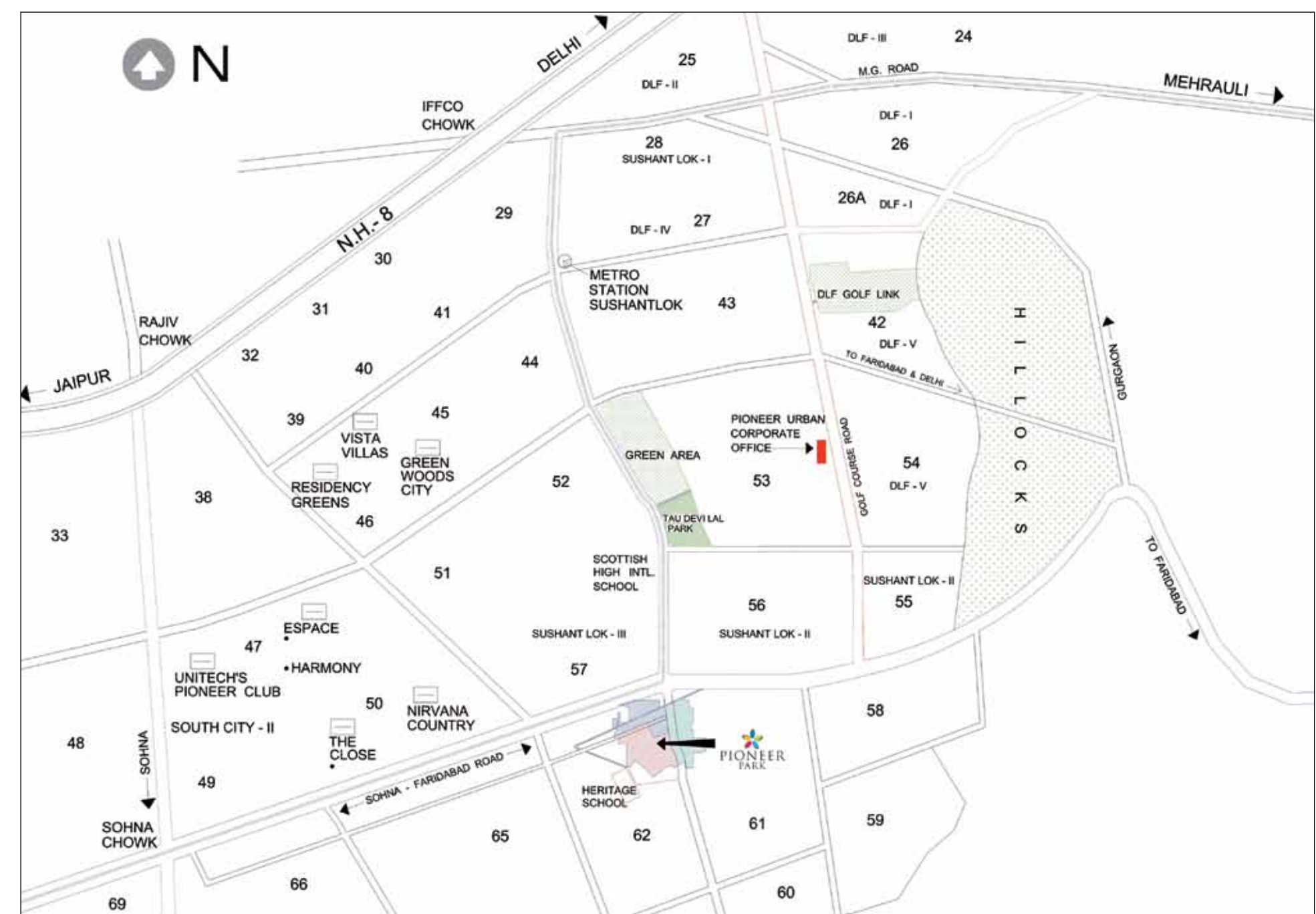
UNCOMPROMISED
DISTINCTION







LOCATION



MASTERPLAN

- 1 Urban Square
- 2 Retail Plaza and Gardens
- 3 Sector Road Streetscape
- 4 Primary School
- 5 High Street
- 6 Office Tower
- 7 Residential Towers
- 8 Pedestrian Bridge
- 9 Club House
- 10 Parkdrive
- 11 Midrise Towers
- 12 Greens



SITEPLAN



3BHK
TOWER A,B,C



AREA 3498 sqft

SPECIAL UNIT 3BHK + TERRACE
TOWER A,B,C



AREA 3858 sqft

4BHK
TOWER A,B,C



AREA 4279 sqft

4BHK
TOWER A,B,C



AREA 4403 sqft

4BHK + FAMILY
TOWER A,B,C



AREA 4690 sqft

SPECIAL UNIT 4BHK + FAMILY + TERRACE
TOWER A,B,C



AREA 4983 sqft



DESIGN MEETS OPULENCE

GRAND DUPLEX RESIDENCES

TOWNHOUSE LOWER 4BHK + FAMILY + TERRACE
TOWER A,B,C



AREA 7004 sqft

TOWNHOUSE UPPER 4BHK + FAMILY + TERRACE
TOWER A,B,C



AREA 7004 sqft

PENTHOUSE LOWER FLOOR 5BHK + FAMILY
+ POOL & SUNDECK
TOWER A,B,C



AREA 9625 sqft

PENTHOUSE UPPER FLOOR + FAMILY
+ POOL & SUNDECK
TOWER A,B,C



AREA 9625 sqft

4BHK
TOWER D



AREA 4613 sqft

4BHK SPECIAL
TOWER D



AREA 4739 sqft

4BHK + FAMILY
TOWER D



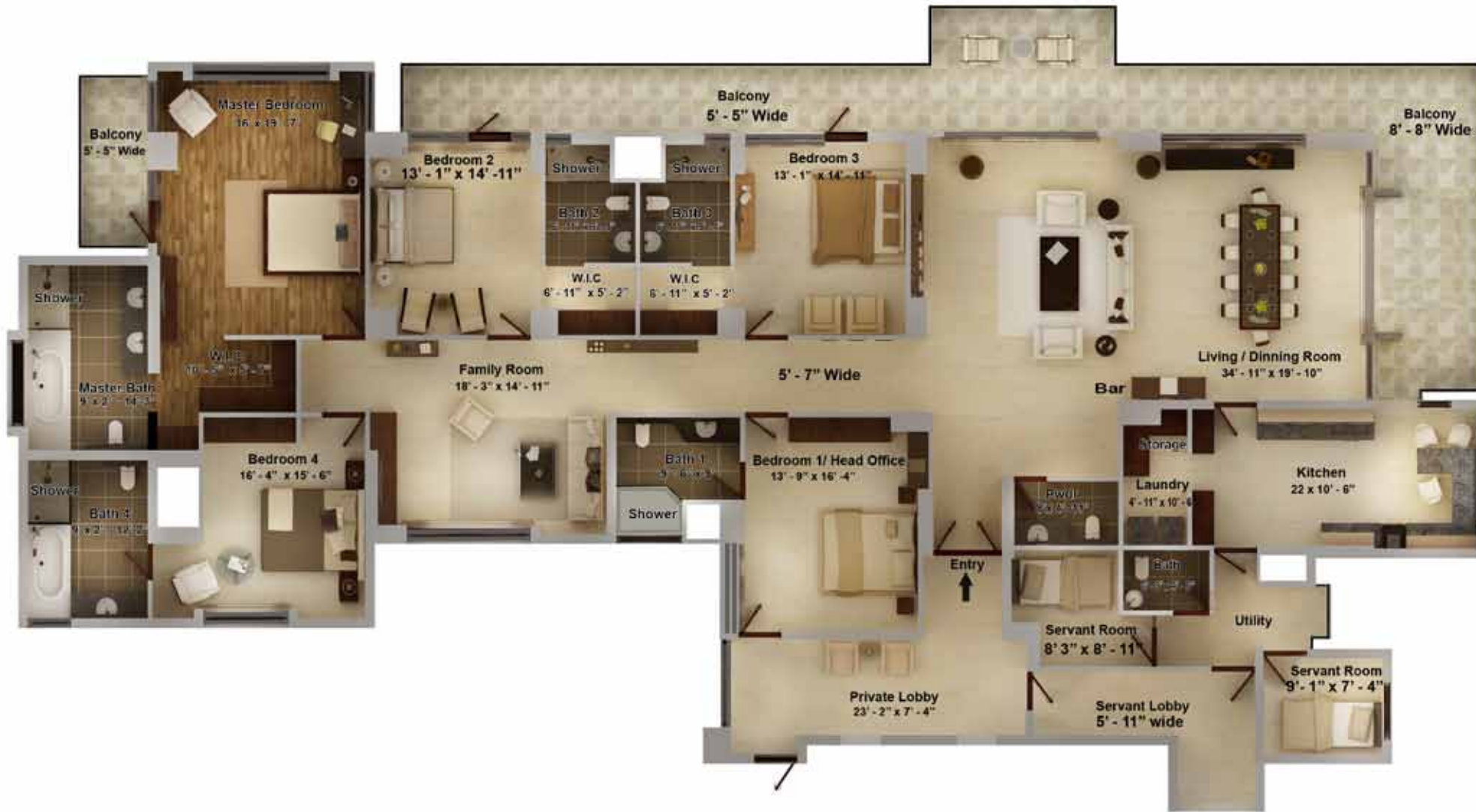
AREA 4902 sqft

4BHK + FAMILY + TERRACE
TOWER D



AREA 5310 sqft

5BHK + FAMILY
TOWER D



EXTRAORDINARY LIVING

GRAND DUPLEX RESIDENCES

AREA 5761 sqft

TOWNHOUSE LOWER 4BHK + FAMILY + TERRACE
TOWER D



AREA 7673 sqft

TOWNHOUSE UPPER 4BHK + FAMILY + TERRACE
TOWER D



AREA 7673 sqft

PENTHOUSE LOWER
 5BHK + FAMILY + POOL + SUNDECK
 TOWER D



AREA 10019 sqft

PENTHOUSE UPPER
 5BHK + FAMILY + POOL + SUNDECK
 TOWER D



AREA 10019 sqft

SPECIFICATIONS

Living room		Powder room	
Walls	stone cladding/ feature wall	Walls	imported tiles
Floor	italian/ european marble	Floor	imported tile/ marble
Doors and windows	metal and timber veneered	Doors and windows	timber veneered and aluminium
		Others	shower cubicle
			Premium imported cp fittings
			Premium imported sanitaryware
Master bedroom		Kitchen	
Walls	imported texture paint	Walls	combination of lacquered glass and
Floor	premium imported wood		imported tiles
Doors and windows	metal and timber veneered	Floor	imported tiles
		Doors and windows	metal and timber veneered
		Others	high end european modular kitchen
Other bedroom		Balconies	
Walls	imported texture paint	Walls	textured paint
Floor	italian/ european marble	Floor	imported tiles
Doors and windows	metal and timber veneered	Doors and windows	timber veneered and aluminium
		Railings	stainless steel with toughened glass
Master bath		Lift lobby	
Walls	imported tile	Walls	imported stone cladding
Floor	imported tile/ marble	Floor	italian/ european marble
Doors and windows	timber veneered and aluminium		
Others	steam/ jacuzzi		
	Shower cubicle		
	Premium imported cp fittings		
	Premium imported sanitaryware		
Other bathrooms			
Walls	imported tiles		
Floor	imported tile/ marble		
Doors and windows	timber veneered and aluminium		
Others	shower cubicle		
	Premium imported cp fittings		
	Premium imported sanitaryware		



ARAYA TOWER A,B,C

PRICES

Sale Price including EDC & IDC	As Applicable
Preferential Location Charges (PLC)	As Applicable
Car Parking Charges	Rs.3 Lac per bay (Covered)

S. NO	LINKED STAGES	PAYMENT
1.	On Booking	10 % of Sale Price
2.	Within 60 days of Allotment	10 % of Sale Price
3.	On start of Excavation	7.5 % of Sale Price
4.	On Completion of 3rd basement roof slab	7.5 % of Sale Price
5.	On Completion of Ground floor roof slab	5 % of Sale Price + 50% of Car Parking
6.	On Completion of 4th floor roof slab	5 % of Sale Price + 50% of Car Parking
7.	On Completion of 8th floor roof slab	5 % of Sale Price
8.	On Completion of 12th floor roof slab	5 % of Sale Price
9.	On Completion of 15th floor roof slab	5 % of Sale Price + 50% of PLC if applicable
10.	On Completion of 18th floor roof slab	5 % of Sale Price + 50% of PLC if applicable
11.	On Completion of 21st floor roof slab	5 % of Sale Price
12.	On Completion of 24th floor roof slab	5 % of Sale Price
13.	On Completion of 27th floor roof slab	5 % of Sale Price
14.	On Completion of 30th floor roof slab	5 % of Sale Price
15.	On Completion of final floor roof slab	5 % of Sale Price
16.	On Receipt of occupation certificate	5 % of Sale Price
17.	On intimation for possession	5 % of Sale Price + IBMS(See note 1)+ Stamp Duty

+ Registration Charges (See note 2)

NOTE

- Interest Bearing Maintenance Security (IBMS) Rs.100/- per sq. ft.
- Stamp Duty / Registration Charges shall be payable along with the last installment based on prevailing rates.
- Club Membership Rs.75000/-
- PLC as applicable
- 3 Car Parks for all units are mandatory.
- Price subject to revision at the sole discretion of the company

ARAYA TOWER D

PRICES

Sale Price including EDC & IDC	As Applicable
Preferential Location Charges (PLC)	As Applicable
Car Parking Charges	Rs.3 Lac per bay (Covered)

S. NO	LINKED STAGES	PAYMENT
1.	On Booking	10 % of Sale Price
2.	Within 60 days of Allotment	10 % of Sale Price
3.	On start of Excavation	7.5 % of Sale Price
4.	On Completion of 3rd basement roof slab	7.5 % of Sale Price
5.	On Completion of Ground floor roof slab	5 % of Sale Price + 50% of Car Parking
6.	On Completion of 3rd floor roof slab	5 % of Sale Price + 50% of Car Parking
7.	On Completion of 6th floor roof slab	5 % of Sale Price
8.	On Completion of 9th floor roof slab	5 % of Sale Price + 50% of PLC if applicable
9.	On Completion of 12th floor roof slab	5 % of Sale Price + 50% of PLC if applicable
10.	On Completion of 15th floor roof slab	5 % of Sale Price
11.	On Completion of 18th floor roof slab	5 % of Sale Price
12.	On Completion of 21st floor roof slab	5 % of Sale Price
13.	On Completion of 24th floor roof slab	5 % of Sale Price
14.	On Completion of 27th floor roof slab	5 % of Sale Price
15.	On Completion of final floor roof slab	5 % of Sale Price
16.	On Receipt of occupation certificate	5 % of Sale Price
17.	On intimation for possession	5 % of Sale Price + IBMS(See note 1)+ Stamp Duty

+ Registration Charges (See note 2)

NOTE

- Interest Bearing Maintenance Security (IBMS) Rs.100/- per sq. ft.
- Stamp Duty / Registration Charges shall be payable along with the last installment based on prevailing rates.
- Club Membership Rs.75000/-
- PLC as applicable
- 3 Car Parks for all units are mandatory.



REFINED ELEGANCE

TO GET MORE INFORMATION ABOUT ARAYA

PLEASE VISIT
PIONEER PARK SALES PAVILION
SECTOR - 62, GOLF COURSE EXTENSION ROAD
GURGAON, INDIA
T: 0124 2722 000, +91 99999 84840 or +91 99999 84841

PIONEER URBAN CORPORATE OFFICE
PARAS DOWNTOWN CENTER, 5TH AND 7TH FLOOR
GOLF COURSE ROAD, SECTOR - 53
GURGAON, INDIA
T: 0124 4322 300

PLEASE EMAIL US AT SALES@PIONEERURBAN.IN


ARAYA.CO.IN



The 54

at ARAYA

Life. Curated.



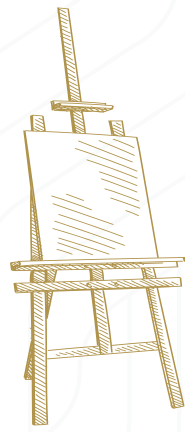
*Let the wind carry the whisper from your lips,
let it make true your every wish.*

*Let your desires be fulfilled at just a glance,
come to where nothing is left to chance.*

*Come to a paradise that never ceases to amaze,
to live a dream in your very own space.*

*Come to life in a different dimension,
in the heart of golf course extension.*

*Come to a home like you have never seen before,
we welcome you to The 54.*









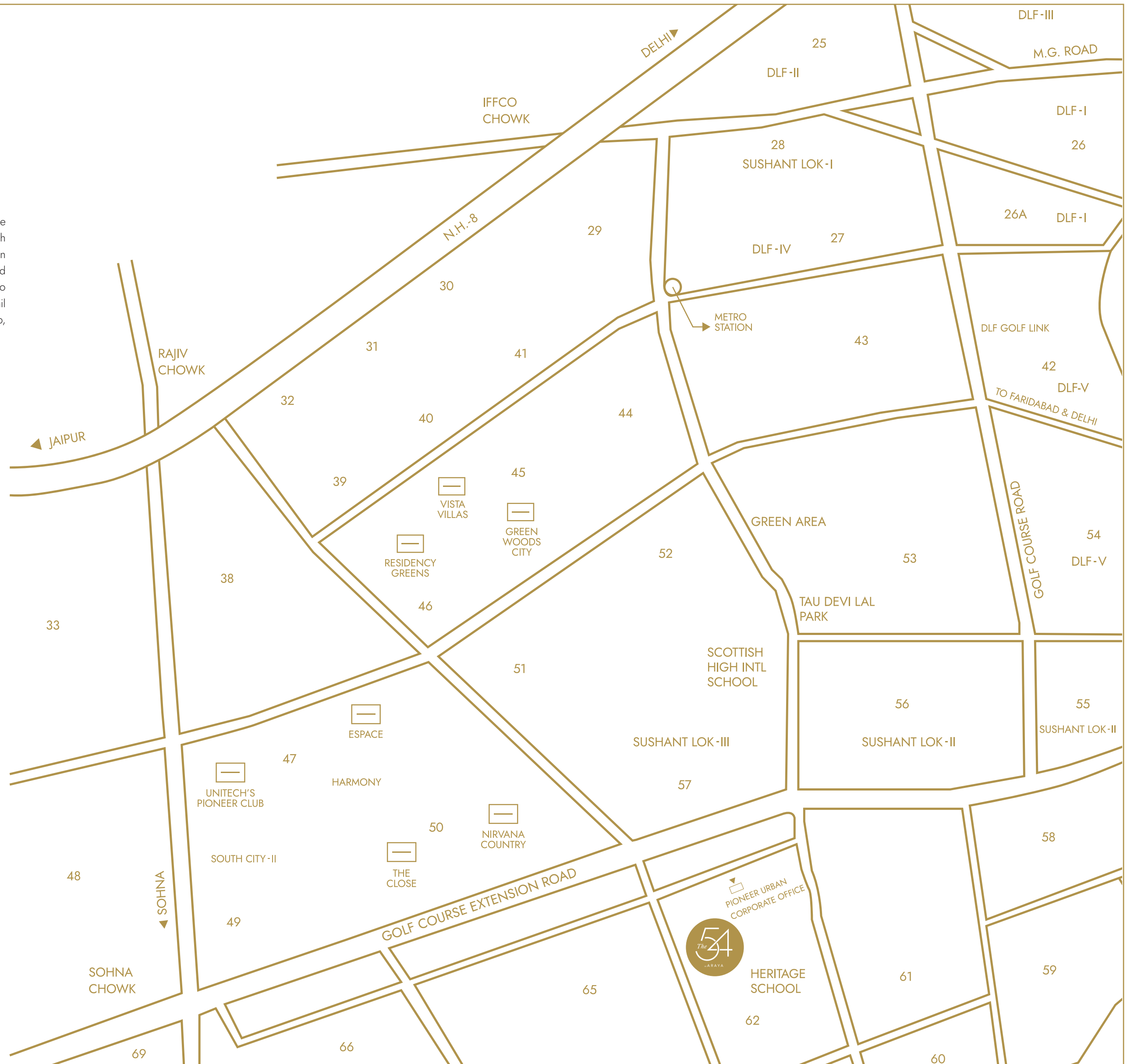
*Live in an environment
where each element
has been hand-picked,
just for you*



A perfectly selected location for a picturesque life

The residences at The 54 are beautifully tucked away from the madness of the city. Yet, they are close to every need you wish attended to. Strategically located on Golf Course Extension Road and in close proximity to the Southern Periphery Road (Sohna Road), these residences give you immediate access to the best Gurugram has to offer. From the best options in retail and commercial developments to schools, a bustling office hub, hospitals, colleges and world class recreational options.

-  Immediate access to NH-8 and Golf Course Road
-  International schools like GD Goenka, Heritage and Amity close by
-  Medanta, Fortis, Artemis and Max hospitals in close vicinity
-  The best MNCs, Colleges and Universities of Gurugram just a short drive away
-  Close to three golf courses - Classic Golf Resort, Golden Greens & DLF Golf And Country Club
-  Only a short drive away from IGI Airport and Huda City Center





*Sculpted for the
pioneers of tomorrow*

Living at The 54 really is like living in a world curated entirely for you. And it all begins with the very building you live in. Through a host of carefully selected physical amenities, it's the perfect setting for you to turn your biggest ideas into greater successes, as well as experience a level of peace and tranquility only a few have known to exist.

The 54 is an exclusive tower within Pioneer Urban's Araya complex, dedicated to a higher order of life. With only two apartments to every floor, each apartment comes with a private elevator landing and much larger floor plate sizes. The lobby itself is a work of art where you would love to spend your time. A quick stop for coffee, a mesmerizing water body, strategic seating area and a dedicated reading zone make the ambience exceptional for a small meeting, working from home or just gazing at a beautiful sunset.

*A lobby that
glitters from afar*






Tread across a globe of plenitude

Set foot into a world brimming with luxury. From the moment you enter the lobby, you will be enchanted by the grandiose that surrounds you. The generously designed glass window panes that invite natural light in abundance will leave you enamored. The delicately designed 300+ hanging lights that reflect across the room and enhance the aura of the space will captivate your senses. The support of a world class concierge service that understands and attends to your every need makes life a breeze.




 300+ DELICATELY CRAFTED HANGING LIGHTS

 ABUNDANT NATURAL LIGHT

 END-TO-END, LARGE WINDOW PANES

 COMFORTABLE AND SPACIOUS SITTING AREA

 COFFEE ZONE AND A READING AREA



*Apartments that redefine
the language of luxury*



*An achiever's dream,
a connoisseur's paradise*

Get used to an environment where everything goes your way. And it all begins with your living space. Offering a host of carefully chosen physical amenities such as high grade Italian/European marble, pure filtered air through the vents and misters in your favourite balcony that put you in a space of unparalleled satisfaction.





INNOVATION NESTLES IN EVERY CORNER

Whether you want to reduce the temperature or turn on an appliance, do it through automated systems built to give you full control.



YOUR EVERY BREATH IS CARED FOR

Fresh experiences and successes begin with an environment that is always fresh at its very core. Each apartment is fitted with high power air filtration systems.



EVERY MEAL YOU PUT TOGETHER IS A MASTERPIECE

A modular kitchen fully fitted with top-notch German appliances. Cutting edge anti-skid tiles alongside huge storage compartments.



A 270 DEGREE VIEW

Large windows that extend from edge to edge. Experience the charm of sprawling green expanses, admire lavish central greens and a bird's eye view of club ZION.



EVERY DROP OF WATER IS LIKE A BLESSING FROM ABOVE

Every drop of water from every tap in the apartment, including the one in your bathrooms is good enough to drink without hesitation.



LET THE WEATHER ACCLIMATIZE FOR YOU

With misters in the largest balcony, make your apartment the coolest place to be all summer long.



*Where only those who have
triumphed arrive*

Penthouses at The 54



10,019 SQ. FT.
(930.7 SQ. MTR.)
OF SPACE



DOUBLE DECK PARTY AREA
THAT CAN HOLD UP TO
A 100 PEOPLE AT A TIME



LARGE PRIVATE
SWIMMING POOL
DEDICATED TO JUST YOU



ENORMOUS MASTER ROOM
AREA SPANNING OVER
600 SQ. FT. (55.7 SQ. MTR.)





*The pinnacle of success is where you
find the keys to the kingdom*

The penthouses at The 54 are truly a study in the finest luxury has to offer. With a personal swimming pool and generously appointed living and bed rooms, they afford you the space you need to be whoever you want to be. Enjoy the spectacular views, an abundance of sunlight through the large windows and spacious balconies with areas to entertain and play.



Z I O N

*Live larger than life as opulence
and recreation intertwine
at Club ZION*

*A realm of
phenomenal indulgence*





Step into the epicentre of the exceptional

The ZION, at Araya – is one of NCR's largest indoor clubs that houses all you could want from sports and recreational facilities to leisure, lifestyle and fine dining. It's not any ordinary club. It's a spectacle, a work of art that will leave you awe-struck every time you set foot in it. Take a deep breath as you witness a bouquet of unmatched facilities, unbeatable quality of service and state-of-the-art amenities like never before over the opulent expanse of this 60,000 SQ. FT. (5,574 SQ. MTR.). stunning property. Whether you want to play your favourite sport or step out with your loved ones for a great time or simply take a break from the kids and enjoy a nice cup of coffee in solace, ZION is the ultimate destination for you and those dear to you! It aspires to create a world where everyone is welcome to celebrate, play, laugh and create memories together.



ONE OF NCR'S
LARGEST INDOOR CLUBS



MULTIPLE SPACES FOR LARGE
AND SMALL SIT-DOWNS



60,000 SQ. FT. (5,574 SQ. MTR.)
OF LUXURY SPACE



REMARKABLE
VIEWS



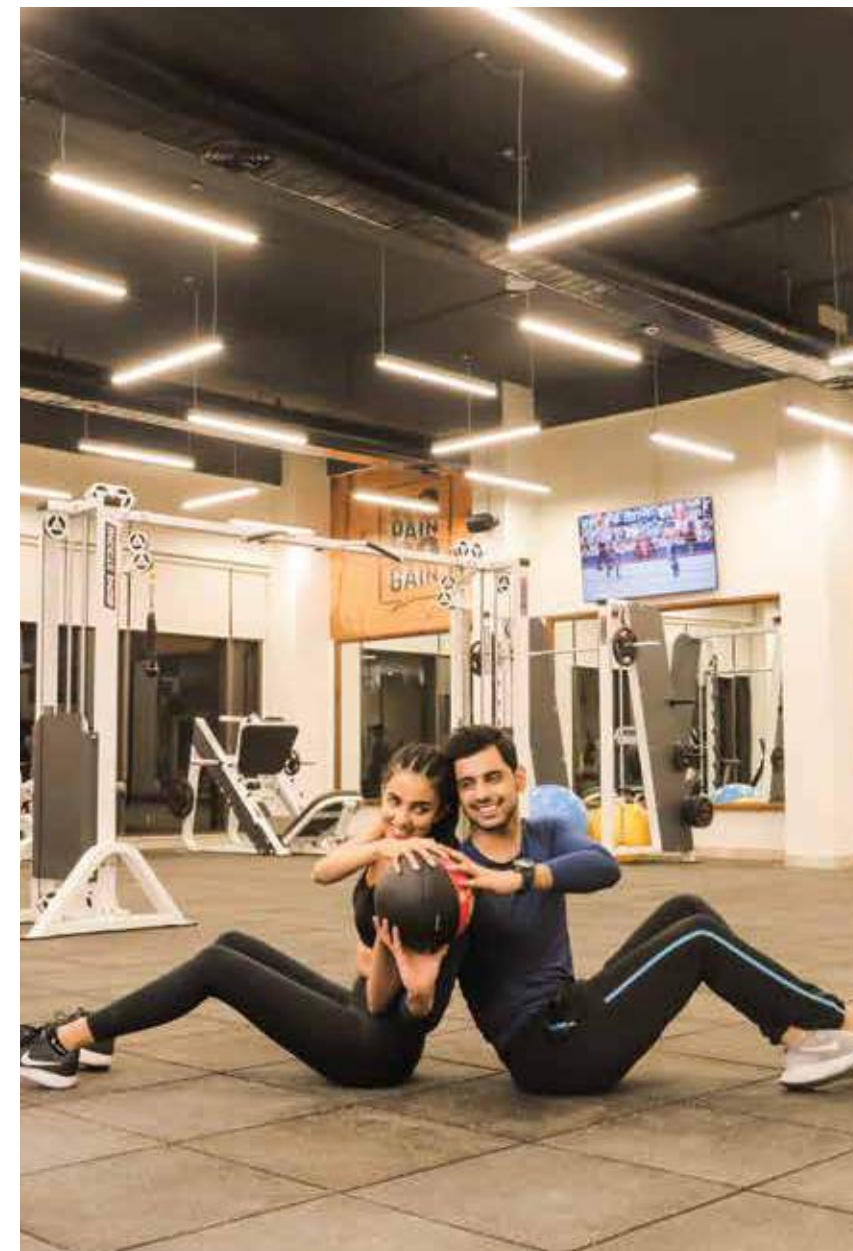
LARGE AND CAPTIVATING
LOBBY



INDOOR BADMINTON COURT

INDOOR CRICKET

A BEAUTIFULLY APPOINTED
SPORTS LOUNGE FOR GROUP
VIEWINGS



A WORLD CLASS CAFE

LARGE GYM WITH
STATE-OF-THE-ART EQUIPMENT

YOGA ROOM WITH LARGE WINDOWS
AND A BEAUTIFUL VIEW





BANQUET HALL WITH EXCELLENT VIEWS OF THE GREENS

POOL TABLE

INDOOR SQUASH COURT

FULLY STOCKED AND PADDED KIDS PLAY AREA



LARGE SWIMMING POOL WITH KIDS SPLASH POOL AND SEATING AREA

INTERNATIONAL STANDARD TENNIS COURT

JUICE BAR IN THE SPORTS AREA

RESTAURANT AND BAR





FULLY SERVICED BUSINESS CENTER

HALF BASKETBALL COURT

LUXURIOUS SPA/SALON



TABLE TENNIS

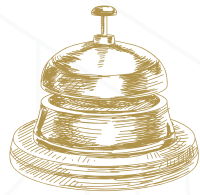
BOARD GAME AREAS

FOOSBALL TABLE





*Where each encounter is
tailor-made for you*




Quintessentially you

We believe that since your achievements have brought you to The 54, you deserve the highest level of exclusivity. And that's why as a resident, you will be inducted into the world's leading members-only concierge club – Quintessentially. Opening the door to the most exclusive, invite only events, in-house spa treatments, front row sold out concert tickets, finding an interior designer that is just right for you, sourcing rare ingredients and custom curated ensembles, exclusive previews of restricted shows, or just daily chores and grocery deliveries, Quintessentially has got you covered.

 YOUR OWN LIFESTYLE
MANAGER

 CREATING A COMMUNITY
OF ACHIEVERS

 EXCLUSIVE,
JUST LIKE YOU

 STAR-QUALITY
EVENTS

 FIRST CLASS
VIRTUAL SERVICES



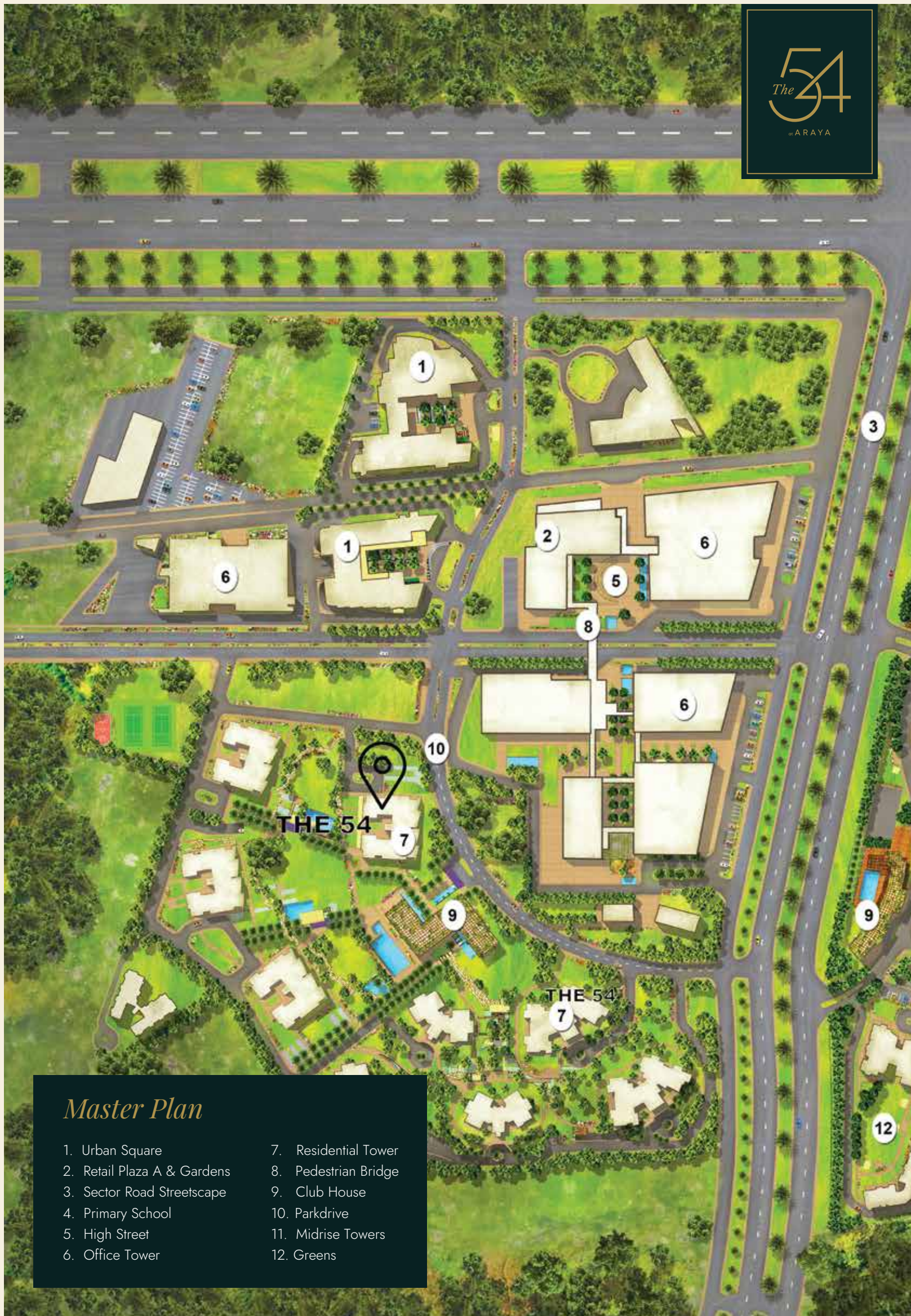
Welcome to

The 54

at ARAYA

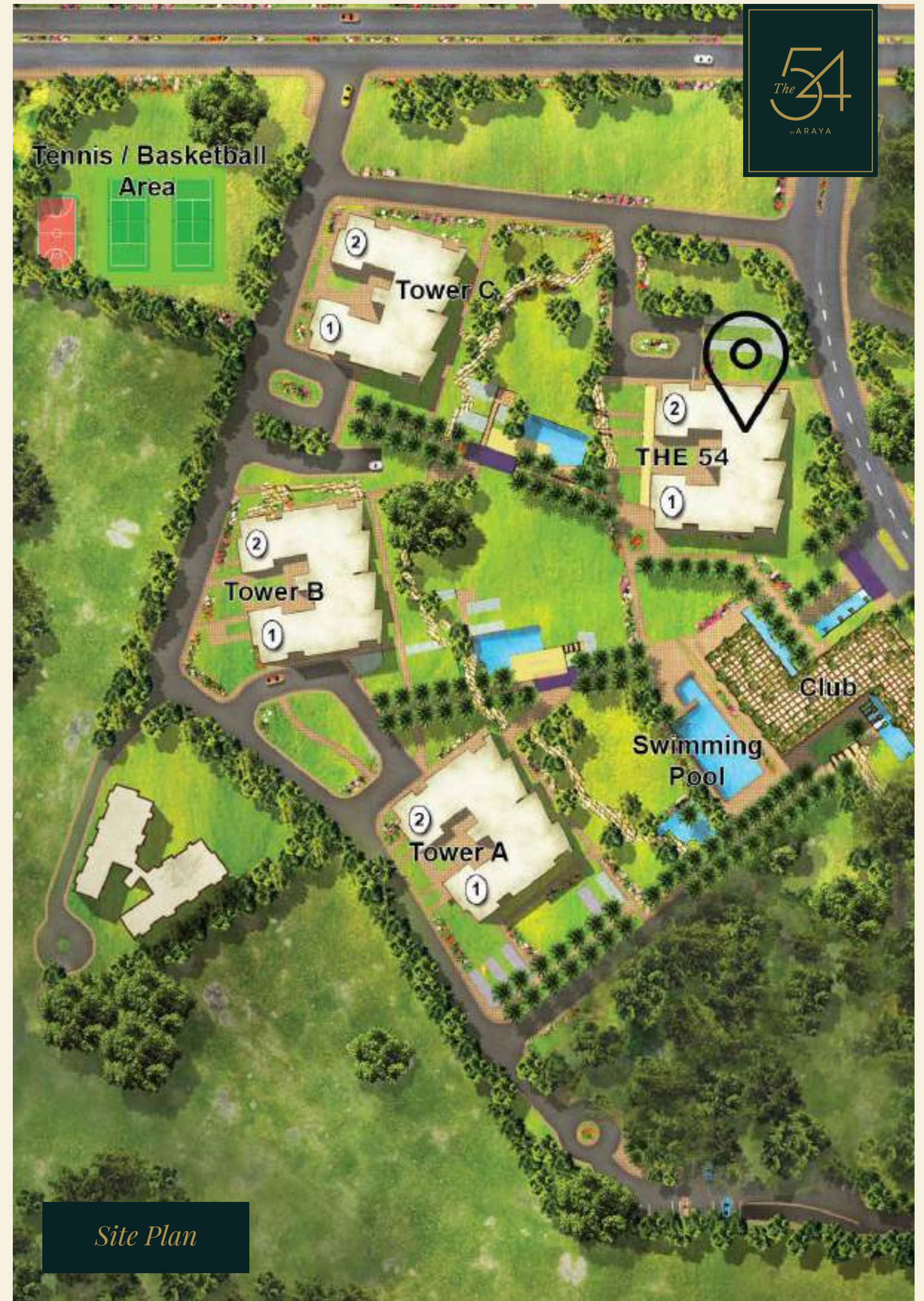
Life. Curated.





Master Plan

- 1. Urban Square
- 2. Retail Plaza A & Gardens
- 3. Sector Road Streetscape
- 4. Primary School
- 5. High Street
- 6. Office Tower
- 7. Residential Tower
- 8. Pedestrian Bridge
- 9. Club House
- 10. Parkdrive
- 11. Midrise Towers
- 12. Greens



Site Plan

Floor Plans



Puja Room 4 BHK

Carpet Area	-	3,203 Sq. Ft. (297.5 Sq. Mtr.)
Balcony Area	-	498 - 550 Sq. Ft. (46.2 - 51 Sq. Mtr.)
Saleable Area	-	4,613 Sq. Ft. (428.5 Sq. Mtr.)



Puja Room Special 4 BHK

Carpet Area	-	3,221 Sq. Ft. (299.2 Sq. Mtr.)
Balcony Area	-	500 - 532 Sq.Ft. (46.4 - 49.4 Sq. Mtr.)
Terrace	-	47 - 125 Sq.Ft. (4.3 - 11.6 Sq. Mtr.)
Saleable Area	-	4,739 Sq. Ft. (440.2 Sq. Mtr.)

Floor Plans



Family Room 4 BHK

Carpet Area	-	3,398 Sq. Ft. (315.6 Sq. Mtr.)
Balcony Area	-	645 Sq. Ft. (59.9 Sq. Mtr.)
Saleable Area	-	4,902 Sq. Ft. (455.4 Sq. Mtr.)

Family Room Special 4 BHK

Carpet Area	-	3,398 Sq. Ft. (315.6 Sq. Mtr.)
Balcony Area	-	645 Sq. Ft. (59.9 Sq. Mtr.)
Terrace	-	444 Sq. Ft. (41.2 Sq. Mtr.)
Saleable Area	-	5,310 Sq. Ft. (493.3 Sq. Mtr.)

Floor Plans



5 BHK

Carpet Area	-	3,974 Sq. Ft. (369.1 Sq. Mtr.)
Balcony Area	-	779 Sq. Ft. (72.3 Sq. Mtr.)
Saleable Area	-	5,761 Sq. Ft. (535.2 Sq. Mtr.)



Where your legacy finds a home

Floor Plans



Town House Lower Level + 4 BHK + Family + Terrace

Carpet Area	-	4,957 Sq. Ft. (460.5 Sq. Mtr.)
Balcony Area	-	1,282 Sq. Ft. (119.1 Sq. Mtr.)
Saleable Area	-	7,673 Sq. Ft. (712.8 Sq. Mtr.)

Town House Upper Level + 4 BHK + Family + Terrace

Carpet Area	-	4,957 Sq. Ft. (460.5 Sq. Mtr.)
Balcony Area	-	1,282 Sq. Ft. (119.1 Sq. Mtr.)
Saleable Area	-	7,673 Sq. Ft. (712.8 Sq. Mtr.)

Floor Plans



Penthouse Lower Level (5 BHK + Family + Pool + Sundeck)

Carpet Area	-	6,601 Sq. Ft. (613.2 Sq. Mtr.)
Balcony Area	-	365 Sq. Ft. (33.9 Sq. Mtr.)
Terrace	-	1,634 Sq. Ft. (151.8 Sq. Mtr.)
Saleable Area	-	10,019 Sq. Ft. (930.7 Sq. Mtr.)

Penthouse Upper Level (5 BHK + Family + Pool + Sundeck)

Carpet Area	-	6,601 Sq. Ft. (613.2 Sq. Mtr.)
Balcony Area	-	365 Sq. Ft. (33.9 Sq. Mtr.)
Terrace	-	1,634 Sq. Ft. (151.8 Sq. Mtr.)
Saleable Area	-	10,019 Sq. Ft. (930.7 Sq. Mtr.)

Specifications



LIVING ROOM

Walls	Acrylic Paint
Floor	Italian/European Marble
Doors & Windows	Wooden and double glazed aluminium



MASTER BEDROOM

Walls	Acrylic Paint
Floor	Wooden flooring
Doors & Windows	Wooden and double glazed aluminium



OTHER BEDROOM

Walls	Acrylic Paint
Floor	Wooden flooring
Doors & Windows	Wooden and double glazed aluminium



MASTER BATHROOM

Walls	Italian/European Marble and Wall Tiles
Floor	Italian/European Marble
Doors & Windows	Wooden and double glazed aluminium
Others	Shower Cubicle with Steamer Premium CP Fittings (Grohe or Equivalent) Premium Sanitaryware (Duravit or Equivalent)
Water	SS waterpipes & RO water in wash basin



OTHER BATHROOM

Walls	Wall Tiles
Floor	Anti-skid Tiles
Doors & Windows	Wooden and double glazed aluminium
Others	Shower Cubicle Premium CP Fittings (Grohe or Equivalent) Premium Sanitaryware (Duravit or Equivalent)
Water	SS waterpipes & RO water in wash basin



POWDER ROOM

Walls	Marble and tiles
Floor	Italian/European Marble
Doors & Windows	Wooden and double glazed aluminium
Others	Shower Cubicle Premium CP Fittings (Grohe or Equivalent) Premium Sanitaryware (Duravit or Equivalent)
Water	SS waterpipes & RO water in wash basin



KITCHEN

Walls	Acrylic Paint & Tiles/Stone
Floor	Anti-skid Tiles
Doors & Windows	Wooden and double glazed aluminium
Cabinetry	Modular Kitchen
White Goods	Built-in Refrigerator, Washing Machine, Dishwasher, Oven, Microwave, Hob, Chimney. Geysers and exhaust.
Others	Ionised water in sink



LIFT LOBBY

Walls	Italian/European Marble & Acrylic paint
Floor	Italian/European Marble



OTHERS

- RO water supply in all taps in kitchen and bathroom wash basins
- VRV Airconditioning System with PM2.5 filters (Merv 13-15 Standard)
- Comprehensive scaleable wifi/internet enabled home automation system
- Multilevel security system
- Outdoor Kids play area with swings, slides, etc.



BALCONIES

Walls	External Texture Paint
Floor	Anti-skid Tiles
Doors & Windows	Double Glazed Aluminium
Railings	Stainless Steel with laminated safety glass
Others	Misters in main balcony



CLUB FACILITIES

Gymnasium and Activity Center	Outdoor Tennis Courts (2 Nos)
Spa & Salon	Outdoor Half-Basketball Court
Indoor Lounge for reading & relaxation	Table Tennis
Swimming pool with separate kids pool	Pool Table
Kids play area	Multi-cuisine Restaurant & Bar
Sports Lounge with Indoor Games	Café & Juice Bar
Indoor Cricket nets with Bowling Machine	200 seater Banquet/Ballroom
Indoor Squash courts (2 Nos)	Business Centre
Indoor Badminton Court	Multi-purpose Hall



About Pioneer

Pioneer Urban Land and Infrastructure Ltd. is a leading Indian establishment that has been at the forefront of building unparalleled luxury real estate projects for the past two decades across Gurugram. The company has made a distinct place for itself in the development of mini-townships and mega group housing projects. Today it has several prized projects at various locations such as Presidia, Araya, Pioneer Square, Pioneer Park and Urban Square, changing the landscape of Gurugram.

Visualising a prosperous tomorrow

The Pioneer family aspires to make a mark keeping in mind the hundred-year journey ahead while utilising a fusion of vivid imagination and the finest talents in the world to exceed all expectations.



PRESIDIA



ARAYA



PIONEER PARK PHASE 1



URBAN SQUARE



PIONEER SQUARE



Corporate Office:

Pioneer Urban Land & Infrastructure Limited
Pioneer Square, 2nd Floor, Near Golf Course Extension Road, Sector 62, Gurugram - 122098, Haryana

☎ 0124 4322300

✉ sales@pioneerurban.in

🌐 www.pioneerurban.in/the54/