



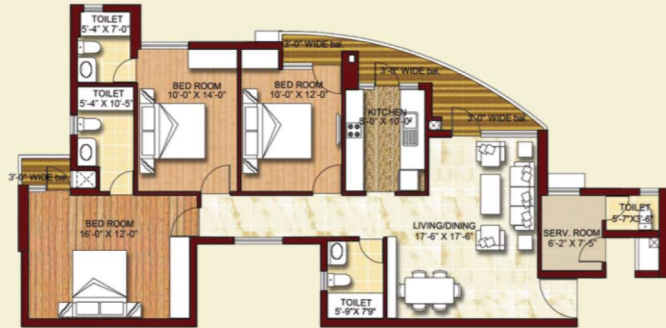
TYPE - 2C (2 BHK)  
T. CARPET AREA - 647 SQ.FT. (60.1083 SQ. M.)  
T. CARPET+ BALCONY AREA - 747 SQ.FT. (69.3986 SQ. M.)  
TOWERS - U,V



TYPE 4 (3 BHK+ 3T)  
T. CARPET AREA - 971 SQ.FT. (90.2089 SQ. M.)  
T. CARPET+ BALCONY AREA - 1038 SQ.FT. (96.43336 SQ. M.)  
TOWERS - B,C,D,E,F,G,H,I,J



TYPE - 5 (3 BHK+ 3T + SERVANT)  
T. CARPET AREA - 1137 SQ.FT. (105.6308 SQ. M.)  
T. CARPET+ BALCONY AREA - 1246 SQ.FT. (115.7572 SQ. M.)  
TOWERS - B,C,D,E,F,G,H,I,J  
Typical Floor Plan  
(Ground, 3rd, 4th, 5th, 7th, 8th, 9th, 11th, 12th, 14th, 15th, 17th, 18th)



TYPE 5A (3 BHK + 3T + SERVANT)  
T. CARPET AREA - 1130 SQ.FT. (104.9804 SQ. M.)  
T. CARPET+ BALCONY AREA - 1238 SQ.FT. (115.014 SQ. M.)  
TOWERS - B,C,D,E,F,G,H,I,J  
Typical Floor Plan  
(1st, 2nd, 6th, 10th, 13th, 16th, 19th, 20th, )



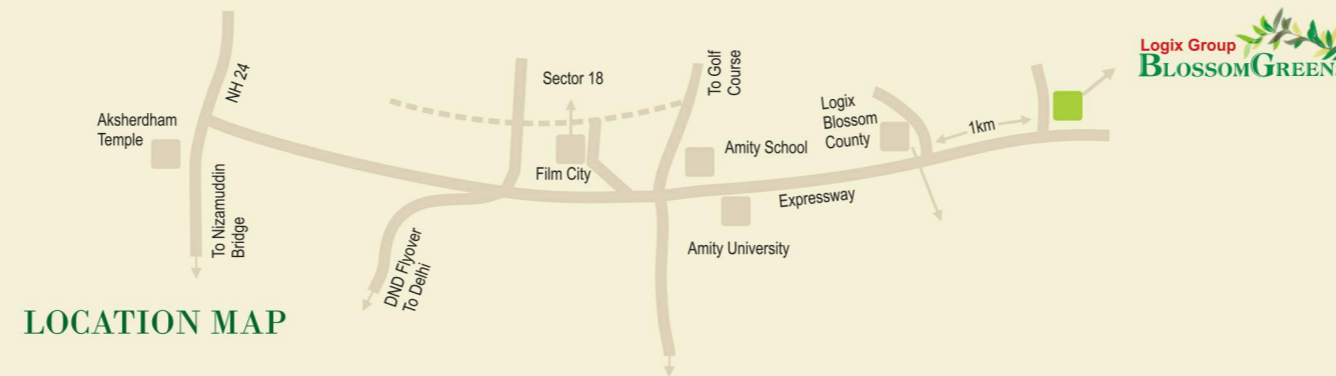
TYPE - 6 (3 BHK+ 3T + STUDY + SERVANT)  
T. CARPET AREA - 1250 SQ.FT. (116.1288 SQ. M.)  
T. CARPET+ BALCONY AREA - 1377 SQ.FT. (127.9275 SQ. M.)  
TOWERS - B,C,D,E,F,G,H,I,J  
Typical Floor Plan  
(Ground, 3rd, 4th, 5th, 7th, 8th, 9th, 11th, 12th, 14th, 15th, 17th, 18th)



TYPE - 6A (3 BHK+ 3T + STUDY + SERVANT)  
T. CARPET AREA - 1254 SQ.FT. (116.5004SQ. M.)  
T. CARPET+ BALCONY AREA - 1381 SQ.FT. (1128.2991 SQ. M.)  
TOWERS - B,C,D,E,F,G,H,I,J  
Typical Floor Plan  
(1st, 2nd, 6th, 10th, 13th, 16th, 19th, 20th, )

# What makes it so great?

- ✿ Sizes suitable for every pocket & every family  
2, 3, 4 BHK apartments
- ✿ Beautiful environs, soothing locale  
18 acre open space with greens, water bodies and more
- ✿ It's located right where the action is  
Next to the corporate and commercial districts of Noida
- ✿ Brilliant location, brilliant design  
Strategically located on the FNG Expressway
- ✿ The conveniences you need are at your doorstep  
Leading hospitals & schools within a radius of 5 km
- ✿ Whizz your way back home, amazing accessibility  
Walking distance from proposed metro station



## LOCATION MAP

Logix Infratech Pvt. Ltd.  
Logix Group: A-4 & 5, Sector-16, Noida (U.P.)

Regd. Office: 85 Ground Floor, World Trade Centre, Barakhamba Lane, New Delhi.  
CIN No.: U70101DL2010PTC202613

Disclaimer: The artistic renderings depicted here are in no way representative of the proposed buildings, apartments, surroundings, etc. The Developers/Owners/Architects reserve absolute right to alter/delete any details, specifications, designs, materials, area etc. as they deem fit without any notice. This is not the official offer for sale. All offers are subject to terms and conditions mentioned in the allotment booklet.



Expressway, Sector - 143, Noida

Logix Group  
The life you deserve

SOON PEOPLE WILL CALL  
IT A MASTERPIECE  
AND WE'LL CALL IT HOME

Logix Group  
**BLOSSOMGREENS**  
A gift of Freshness  
Expressway, Sector - 143, Noida



Actual Site Picture

## The firm foundations of Logix

Since its inception, in 1997, Logix Group has crafted cutting-edge real estate projects to delight you with “excellence through quality”. Having delivered over 4 million sq ft of ultra-efficient IT / ITES facilities in Noida alone, the Group has been pivotal in transforming the premium office segment too. Logix is taking the residential segment to a new peak with 23 million sq ft of residential & 200 acres of plotted development which is currently underway. With 9000 residential apartments expected to be delivered within next 2 year, Logix Group now presents Logix Greens.

## Blossom Greens – The Logical Decision

It’s true; Logix Blossom Greens is everything you’ve ever wanted. Be it the home, the amenities, the surroundings or the location--every detail is pure perfection. And with construction on at full swing, this is the time to zero in on your grand apartment. Now, that’s a logical decision! So, what are you waiting for, book now!



Gymnasium



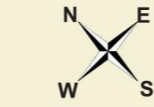
Meditation Centre



Shopping Arcade



Eco Pond



## LANDSCAPE LAYOUT



T. 'C. Area	T. 'C. + <sup>2</sup> B. Area	Type	Tower
573 sqft. (53.2334 sq. m.)	640 sqft. (59.4579 sq. m.)	1 (2BHK)	L,M,N,P,Q,R,S,T,W
651 sqft. (60.4799 sq. m.)	717 sqft. (66.6115 sq. m.)	2 (2BHK)	L,M,N,P,Q,R,S,T,W
793 sqft. (73.6721 sq. m.)	903 sqft. (83.8914 sq. m.)	3A (2BHK + STUDY)	L,M,N,P,Q,R,S,T,W
793 sqft. (73.6721 sq. m.)	899 sqft. (83.5198 sq. m.)	3B (2BHK + STUDY)	L,M,N,P,Q,R,S,T,W
662 sqft. (61.5018 sq. m.)	754 sqft. (70.0489 sq. m.)	2A (2BHK)	U,V
652 sqft. (60.5728 sq. m.)	724 sqft. (67.2618 sq. m.)	2B (2BHK)	U,V
647 sqft. (60.1083 sq. m.)	747 sqft. (69.3986 sq. m.)	2C (2BHK)	U,V
971 sqft. (90.2089 sq. m.)	1038 sqft. (96.43336 sq. m.)	4 (3BHK + 3 TOILETS)	B,C,D,E,F,G,H,I,J
1137 sqft. (105.6308 sq. m.)	1246 sqft. (115.7572 sq. m.)	5 (3BHK + 3T + SERVANTS)	B,C,D,E,F,G,H,I,J
1130 sqft. (104.9804 sq. m.)	1238 sqft. (115.014 sq. m.)	5A (3BHK + 3T + SERVANTS)	B,C,D,E,F,G,H,I,J
1250 sqft. (116.1288 sq. m.)	1377 sqft. (127.9275 sq. m.)	6 (3BHK + STUDY + SERVANTS)	B,C,D,E,F,G,H,I,J
1254 sqft. (116.5004 sq. m.)	1381 sqft. (128.2991 sq. m.)	6A (3BHK + STUDY + SERVANTS)	B,C,D,E,F,G,H,I,J

T - Tentative, <sup>1</sup> Carpet, <sup>2</sup> Balcony

## FLOOR PLAN



TYPE - 1 (2 BHK - AREA) TOWERS- L,M,N,P,Q,R,S,T & W  
T. CARPET AREA - 573 SQ.FT. (53.2334 SQ. M.)  
T. CARPET+ BALCONY AREA -640 SQ.FT. (59.4579 SQ. M.)



TYPE - 2 (2 BHK) TOWERS- L,M,N,P,Q,R,S,T & W  
T. CARPET AREA - 651 SQ.FT. (60.4799 SQ. M.)  
T. CARPET+ BALCONY AREA -717 SQ.FT. (66.6115 SQ. M.)



TYPE - 3A (2 BHK+STUDY) TOWERS- L,M,N,P,Q,R,S,T & W  
T. CARPET AREA - 793 SQ.FT. (73.6721 SQ. M.)  
T. CARPET+ BALCONY AREA -903 SQ.FT. (83.8914 SQ. M.)



TYPE - 3B (2 BHK+STUDY) TOWERS- L,M,N,P,Q,R,S,T & W  
T. CARPET AREA - 793 SQ.FT. (73.6721 SQ. M.)  
T. CARPET+ BALCONY AREA -899 SQ.FT. (83.5198 SQ. M.)



TYPE - 2A (2 BHK) TOWERS- U,U  
T. CARPET AREA - 662 SQFT (61.5018 SQ. M.)  
T. CARPET+ BALCONY AREA -754 SQ.FT. (70.0489 SQ. M.)



TYPE - 2B (2 BHK) TOWERS- U,U  
T. CARPET AREA - 652 SQFT (60.5728 SQ. M.)  
T. CARPET+ BALCONY AREA -724 SQ.FT. (67.2618 SQ. M.)