

A project by



**Dimples Group**

SHAPING YOUR DREAM HOME

**Site Office:**

73 East, M.G. Road, Off. Link Road, Kandivali (W), Mumbai - 400 067.  
| info@dimplesgroup.com | www.73east.in

**Corporate Office:**

Dimples Realtors Pvt. Ltd.  
Shop no 2, 73 East, Opp Aspire Bldg, Off M.G. Road,  
Kandivali West, Mumbai - 400 067  
www.dimplesgroup.com

MahaRERA Registration. No.: P51800015343 | Available at : [www.maharera.mahaonline.gov.in](http://www.maharera.mahaonline.gov.in)

Disclaimer: The plans, specifications, images and other details given in this brochure are only indicative and the developer reserves the right to change any or all these in these interest of the project/development. This brochure does not constitute an offer and/or contract of any nature whatsoever. Any purchase/any legal agreement or document/s in any project shall be governed by the terms and conditions of the agreement entered into between the parties and no details mentioned in the brochure shall govern the transaction. The developer governs and its respective subsidiaries and affiliates, and their respective officers, directors, partners, employees, agents, managers, trustees, representatives or contractors or any of them, related there any successors or assigns of any of the foregoing shall not be liable for any direct, indirect, actual, punitive, incidental, special, consequential damages or economic loss whatsoever, arising from or related to the use of or reliance on this brochure. All plans, pictures and models herein are representative conceptions and not actual buildings or facilities and as such the developer reserves the right to make changes or alterations as its own sole discretion without any obligations and or any prior notice whatsoever. The developer reserves the right to alter, amend and vary the layout, plans, and specifications or feature without prior notice or obligation whatsoever, but subject to the approval of the competent authorities as applicable.

**73 EAST**  
Your Signature Residences

 KANDIVALI (W)

# WHEN YOU CAN SET A BENCHMARK WHY SETTLE FOR THE ORDINARY.

## EXPERIENCE LIMITLESS LIVING

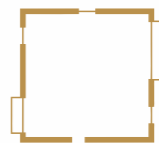
---

Crowning the city skyline, reflective of those who defy the norm, orchestrate your own sky villas as you want. Where every residence is a realm of its own, you choose to define your throne.

With adaptive residences offering the liberty of choice, abundant access, and ease of movement, here, there is no burden of restrictions.

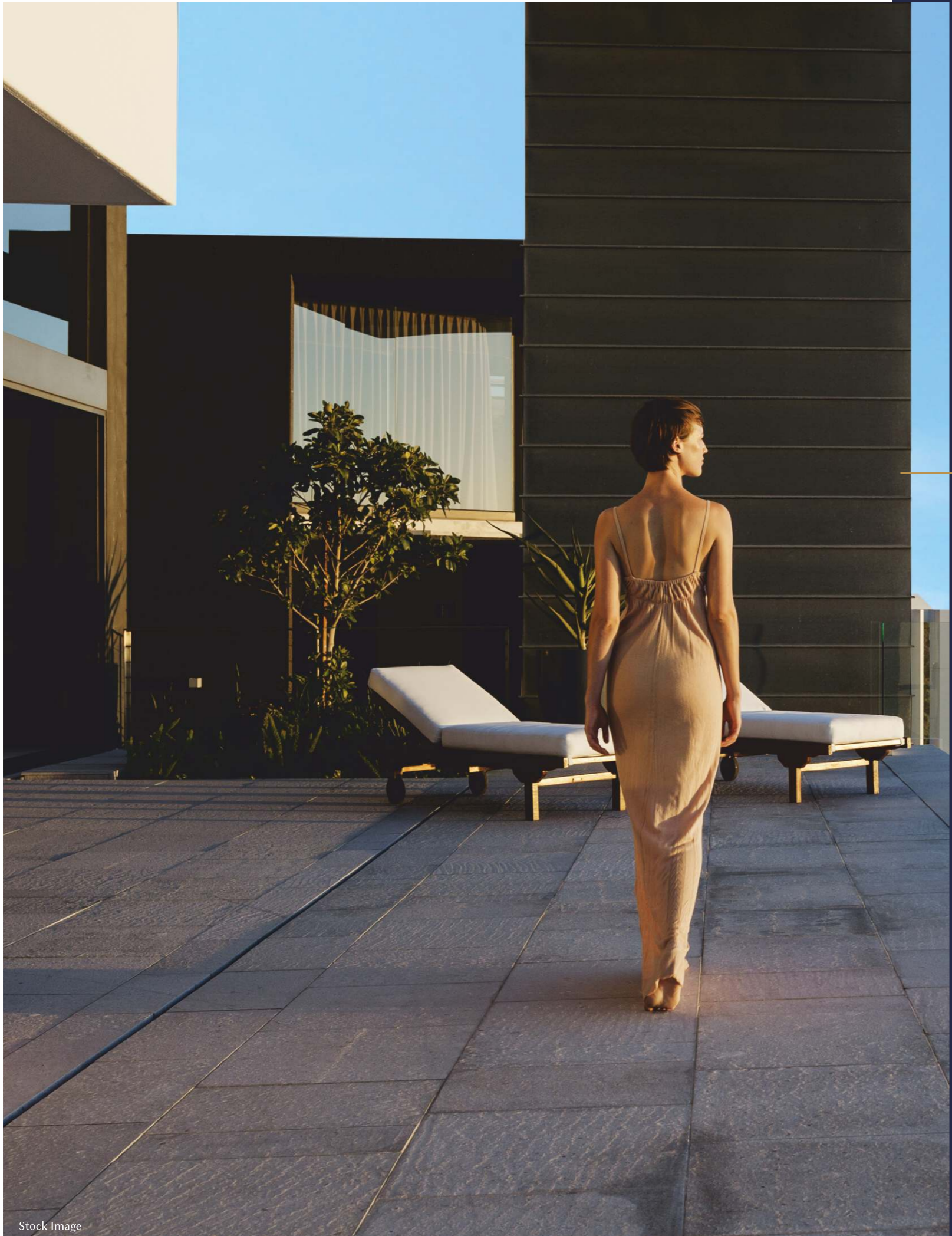


A RESTRICTED  
LIFESTYLE.



ADAPTIVE RESIDENCES.  
UNLIMITED POSSIBILITIES.





# WHEN YOUR ACHIEVEMENTS ARE OUTSTANDING WHY FIT IN.

## LOW DENSITY LIVING

Adorned in exquisite living, limited-edition residences are the plot for fierce privacy, selective access, and unshared spaces. Intuiting your every need, the vast spaces are curated for seamless living.

With fewer residents to occupy the moment, the world adapts to your every whim.



NO. OF PEOPLE LIVING ON  
THE LAND PARCEL ARE MORE  
LEADING TO **HIGH DENSITY**



NO. OF PEOPLE LIVING ON  
THE LAND PARCEL ARE LESS  
LEADING TO **LOW DENSITY**



# THERE ARE MANY STORIES OF A RICH LIFESTYLE, YOU CAN LIVE ONE HERE.

---

Curating opulence, the angular aesthetic nurtures grand interiors. Welcome home to tailored residences where residents are few, and choices, plenty. With iconic architecture, sprawling layouts, unbeatable spaces, and artful amenities, take a step above the rest.

Its unlike anything you've ever seen before, but everything you ever wanted

- 2 Commercial Levels
- 7 Levels of Podium Car Park
- 1 E-Deck (Amenities level)
- 40 Residential Levels
- 24/7 CCTV Surveillance

# A GRANDEUR THAT MARKS YOUR ARRIVAL.

A red carpet welcome, flanked in absolute privacy, every entrance to home is an occasion of unparalleled exhilaration. Enhanced by plush interiors and palatial grandeur, the lobby is a perfect gateway to your stylish and sophisticated den.

- Grand Entrance Lobby of Height 28 Ft.



# BESPOKE LIFESTYLE RESIDENCES, REFINED TO YOUR TASTE.

---

Architected for absolute transformation, the pillar-less spaces are completely customizable. Featuring an open value proposition of bespoke living, you have the flexibility to craft and curate multiple combinations, as you like.

For a true connoisseur of indulgence and function, residences that allow the flexibility to mould style and substance to your own accord.

In the heart of the city, a world that is intrinsically your own.

- Rectangular Layout for Optimized Space Utilization.
- Bare-Shell Residences that Allow Complete Customization
- 818 Sq.Ft. to 3977 Sq.Ft. Carpet Area

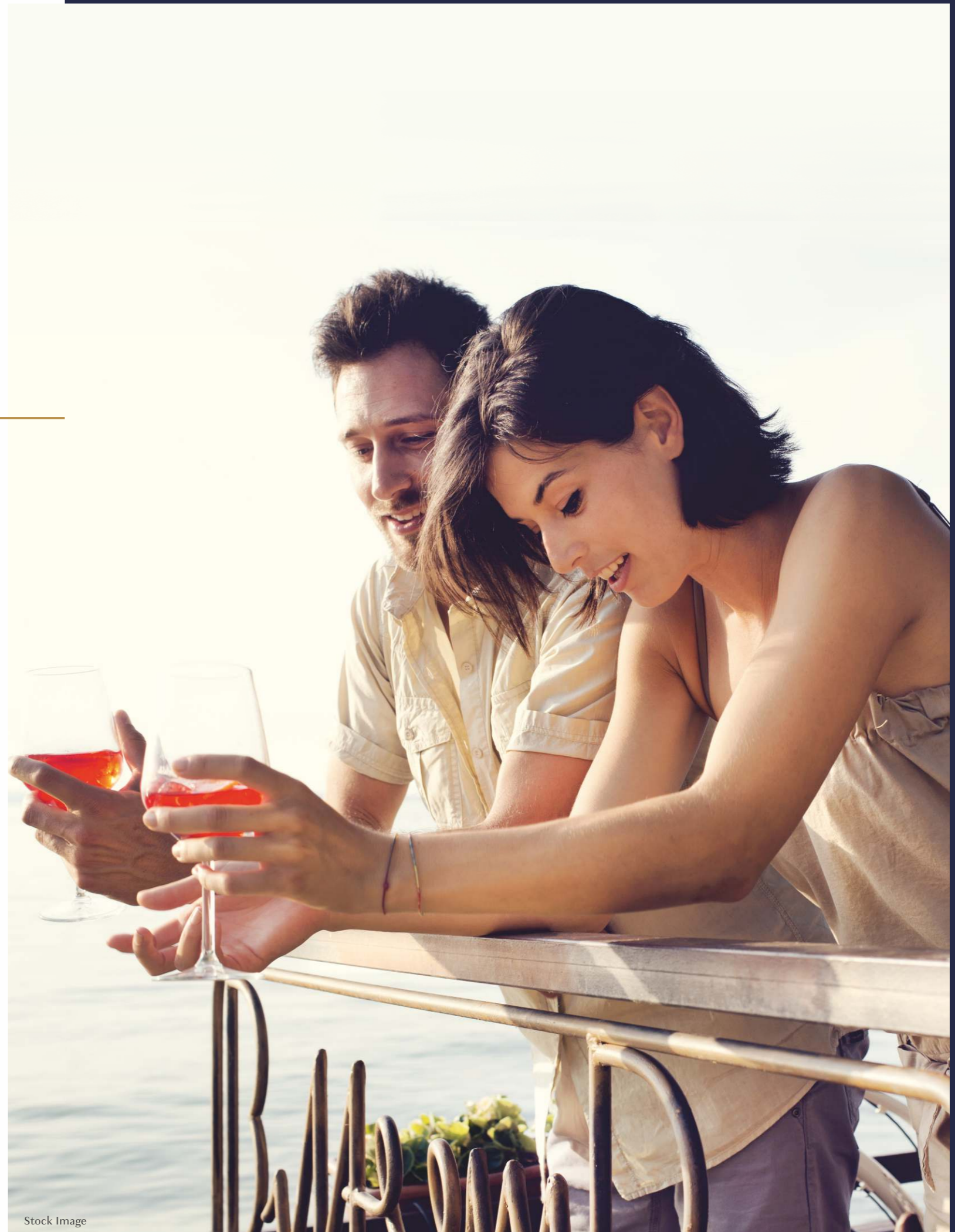
# MAKE THE MOST OF EVERYTHING AROUND YOU.

---

At the crest of indulgence, unfold your abode of distinct exclusivity. Framed by unhindered panoramas of the city, breathe in the seamless spell of the winds at the expansive deck that extends your home into the skies.

Designed for absolute abundance, it's your palace in the sky.

- Upto 821 Sq.Ft. Private Deck Available
- Unobstructed Panoramic Views from All Residences



Stock Image



# SEAMLESSLY CONNECTED TO YOUR WORLD.

Strategically positioned to access the sheer acceleration of unobstructed pathways, retail marvels, and culinary delights, 73 East captures the essence of the visionaries. Located at the prime location – the core of the metropolis, reside in the nucleus of a network that spans the city and beyond.

#### KEY CONNECTIONS

- Metro Station - 100 Mts
- Upcoming Coastal Highway - 900 Mts
- Western Express Highway - 4.1 Kms

#### COLLEGES

- Atharva College of Engineering - 1.6 Kms
- Thakur College of Engineering - 5.5 Kms

#### WATER PARK & BEACHES

- Pagoda - 6.5 Kms
- Water Kingdom / Essel World - 7.1 Kms
- Gorai Beach - 8.8 Kms

#### MALLS

- Raghuleela Mall - 2.2 Kms
- Infinity Mall - 2.8 Kms
- Inorbit Mall - 4 Kms

#### SCHOOLS

- St. Joseph School - 750 Mts
- Thakur Int. School - 1 Km
- Pawar Public Int. School - 1.9 Kms
- Don Bosco School - 3 Kms
- Cambridge School - 4.2 Kms

#### HOSPITALS

- Arya Women Hospital - 210 Mts
- Phoenix Hospital - 210 Mts



# ONE SPECTACULAR DEVELOPMENT. ENDLESS EXPERIENCES.

In a city that claims extravagance, the amenities have been curated with experience and expertise in mind. Enjoy a dazzling array of experiences that nourish and rejuvenate, relax and soothe.

Aim to satiate the finest tastes, delve into indulgences at your demand.

- Swimming Pool
- Kid's Pool
- Kid's Play Area
- Gymnasium
- Meditation / Yoga Lounge
- Steam Room
- Multipurpose Turf Area
- Multipurpose Banquet
- 24/7 CCTV Surveillance
- Gardens, Capes & Podium
- Indoor Games
- Senior Citizen Area





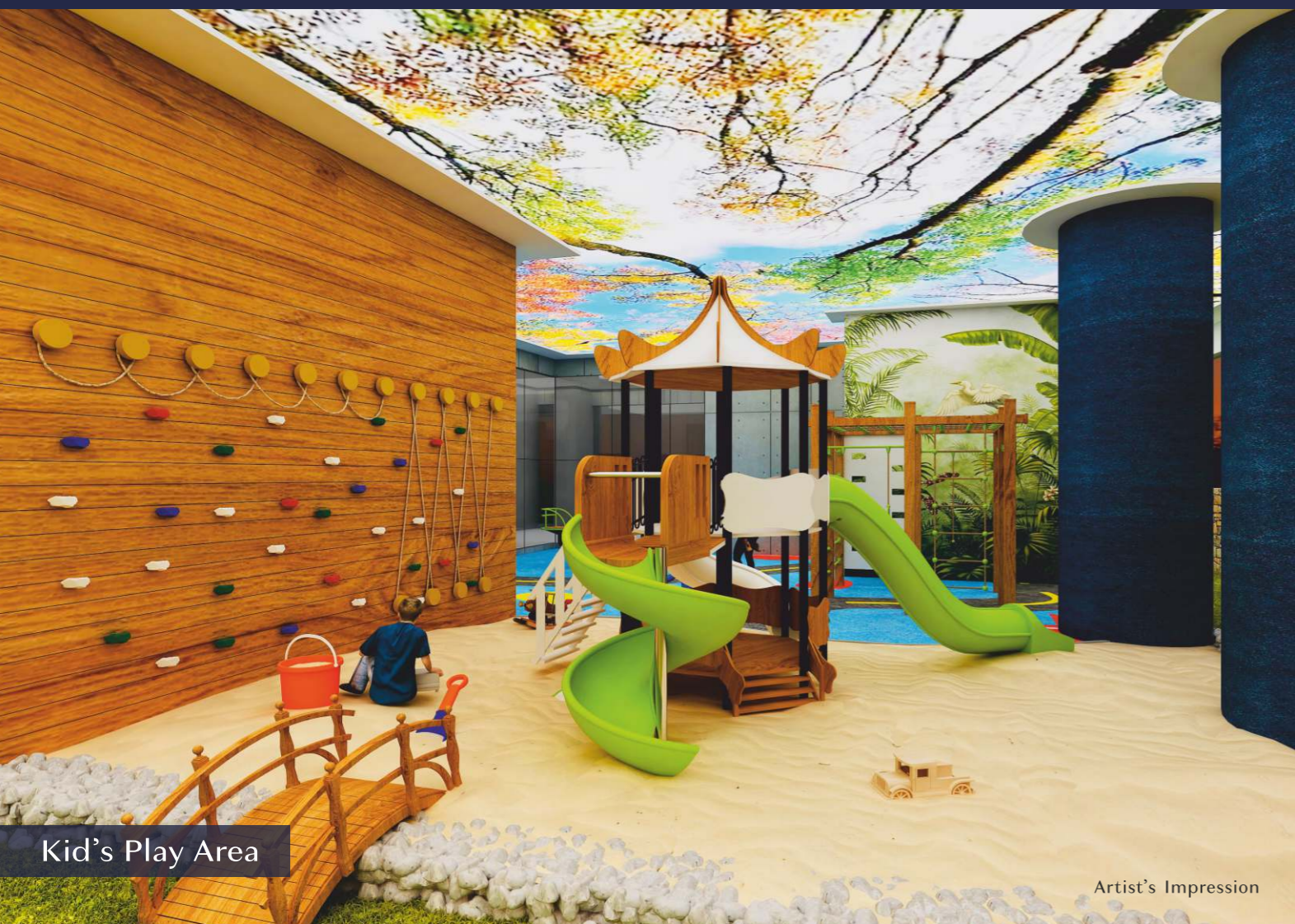
Swimming Pool

Artist's Impression



Gymnasium

Artist's Impression



Kid's Play Area

Artist's Impression



Kid's Pool

Artist's Impression



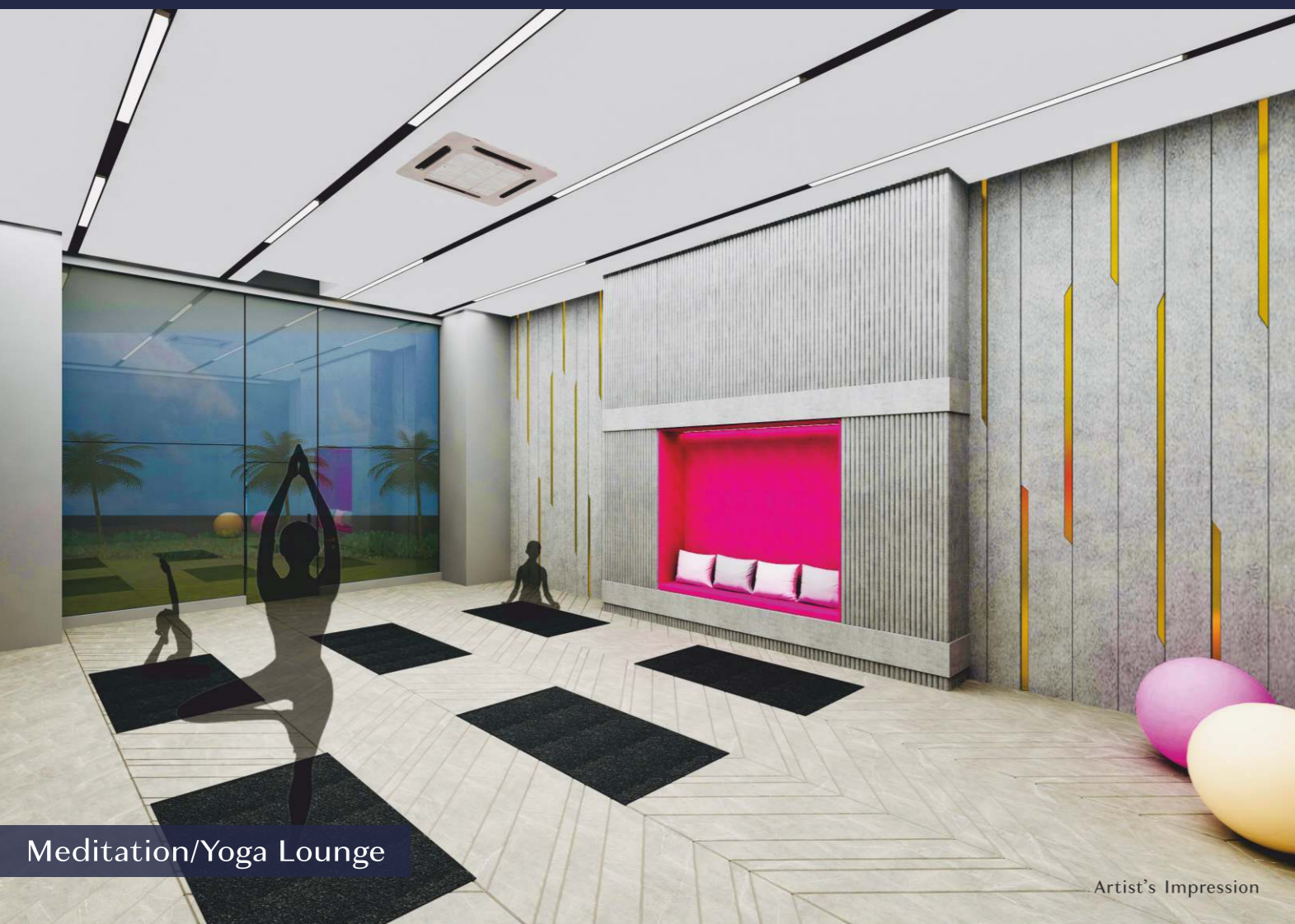
Senior Citizen Area

Artist's Impression



Indoor Games

Artist's Impression



Meditation/Yoga Lounge

Artist's Impression



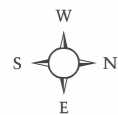
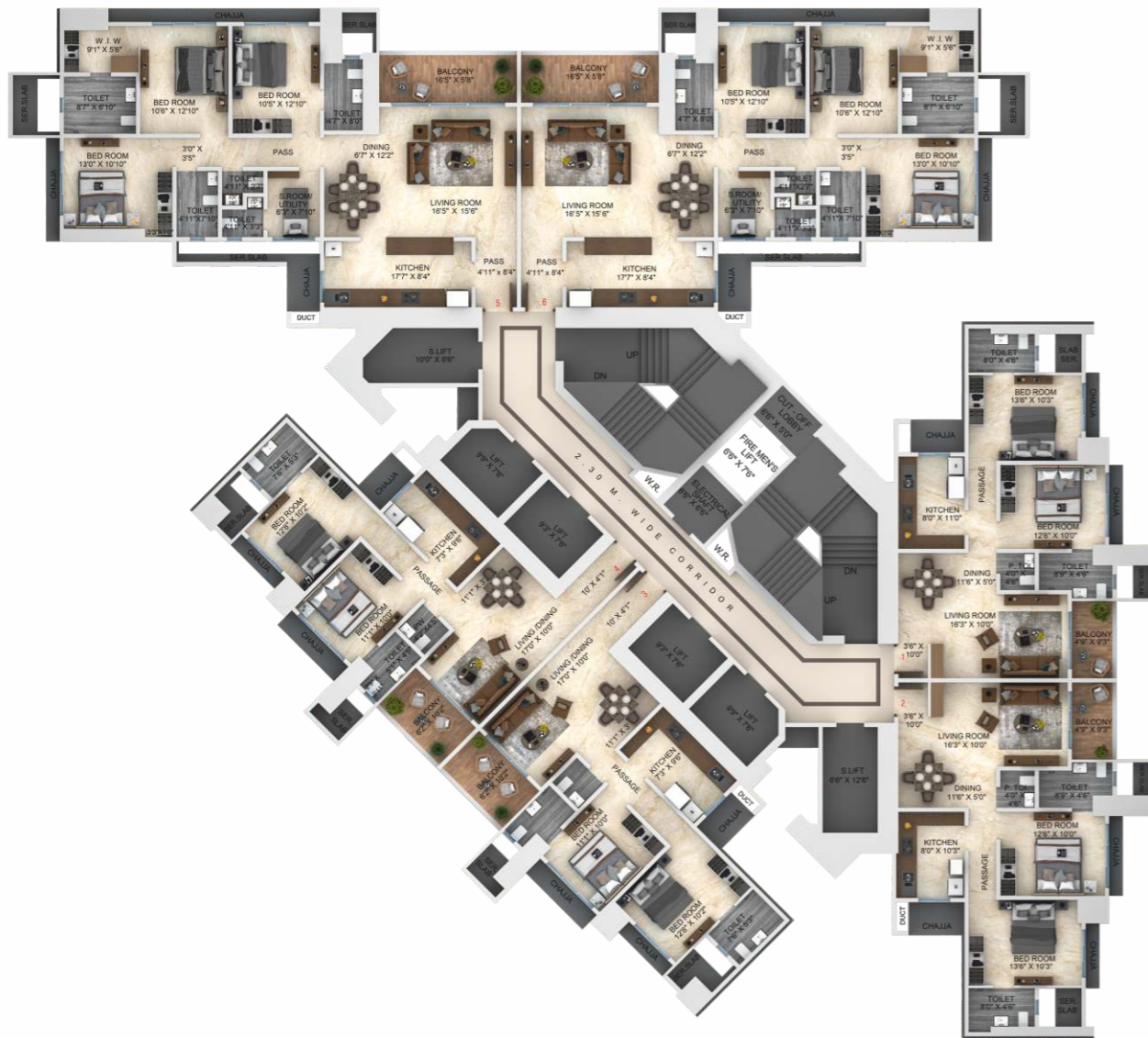
Gardens, Capes & Podium

Artist's Impression

# TYPICAL FLOOR PLAN

# UNIT PLAN 3.5 BHK (ELITE)

Carpet Area - 1462 Sq. Ft. | Flat No. 5 & 6



# UNIT PLAN 2 BHK (GRAND)

Carpet Area - 818 Sq. Ft. | Flat No. 3 & 4



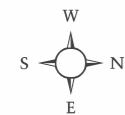
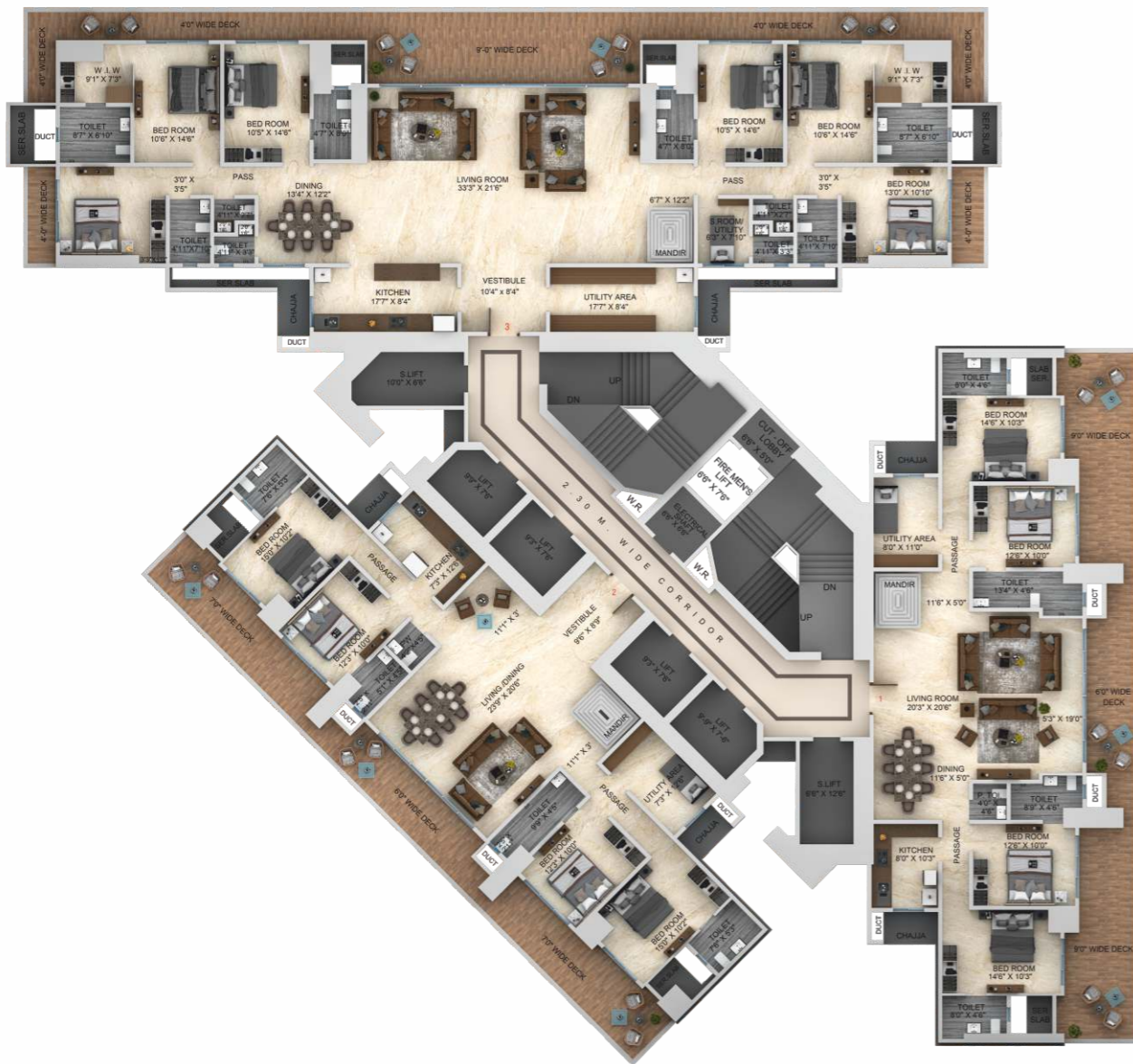
# UNIT PLAN 2 BHK (PREMIUM)

Carpet Area - Flat No. 1 - 836 Sq. Ft. | Flat No. 2 - 831 Sq. Ft.



# TYPICAL FLOOR PLAN

37<sup>th</sup> to 40<sup>th</sup> Floor



# UNIT PLAN SKY MANSION

Carpet Area - Flat No. 3 - 3977 Sq. Ft.



# UNIT PLAN - SKY VILLA

Carpet Area - Flat No. 2 - 2330 Sq. Ft.



# UNIT PLAN - SKY VILLA

Carpet Area - Flat No. 1 - 2437 Sq. Ft.





Dear Customer,

Buying a new home is the most endearing process and perhaps the most challenging one too. So while we go that extra mile to build homes with a heart, we also strive to provide you with easy access to accurate information on our projects.

As a trusted real estate developer with a legacy spanning over two decades, Dimples Group has always believed in complete transparency and stood for quality and ethics in real estate.

We hope this brochure helps to smoothen and enhance your home-buying experience with us.

Warm regards,

*Nitin Patel*

Founder