

“We’d love to live in Metropolis...”

Who wouldn't!

The 36-acre Brigade Metropolis integrated enclave is filled with features and facilities that will enrich the lives of everyone who lives or works within its well designed environment. With three distinct and separate areas—for business, retail and residential purposes—Brigade Metropolis will form an organised, self-contained and happy world, all in itself.

Sensitively and creatively conceptualised, Brigade Metropolis is coming to life with a deep involvement from the best architects, engineers and landscape designers in the city. We’ve carefully planned the framework of Brigade Metropolis, so that you are assured a wonderful life within it. After the success of the seven blocks launched in Phase1, we have launched Phase 2, with five new blocks open for booking.

A fuller, better life...and more time to enjoy it

When you live at Brigade Metropolis you'll discover you have more time for your family, your friends...and yourself. Because the places to which you once had to commute to—stores, restaurants, parks and playgrounds, and entertainment, fitness and sports facilities—will be just a few minutes away. Within your own safe, beautiful campus. Not only will you be able to get more out of life, you could do so more often, and much more comfortably.

A magical childhood

Imagine the life of children—your children—growing up in Brigade Metropolis. Not for them the world of creaky swings and sports-on-the-street. Their memories of childhood will be of large, cheerful playgrounds and walks amidst greenery. Of fresh air and pretty flowers. Of fascinating things made even more fascinating when seen through a child's eyes. Like a floral clock. Or a fountain that rains water in sheets. And, as they skate and cycle, run and swim, all in the security of their own private neighbourhood, they'll also be creating lasting friendships with children who live just around the corner...instead of halfway across town.

There will also be a branch of The Brigade School—a co-educational, CBSE-based institution—located in the vicinity.

Everything from shopping to sports to socialising...life in Brigade Metropolis will be equally delightful for busy, stressed out adults. Groceries and other essentials will be available at The Arcade—the neighbourhood shopping centre. Just walk across and pick up, or order in, everything you need. Entertainment will be so pleasurable with a choice of restaurants just minutes away. If you're a sports and fitness enthusiast, this is the enclave for you: the Regent Club will offer a range of sports and fitness facilities; the amphitheatre will make a great place for cricket matches; jogging tracks will meander through gardens...There will be many new people to meet and many nice places to meet them—from the dance plaza to the Regent Club, the party lawns to The Promenade.

Corporate offices and retail spaces too

Working at Brigade Metropolis will be an equally enriching experience, with two state-of-the-art business towers—Summit 1 and 2, connected by sky-bridges—offering approximately 800,000 sq ft of space for software facilities and corporate offices. And The Arcade will offer 100,000 sq ft of retail space, for a range of outlets and restaurants—making it the neighbourhood centre for shopping and small offices.

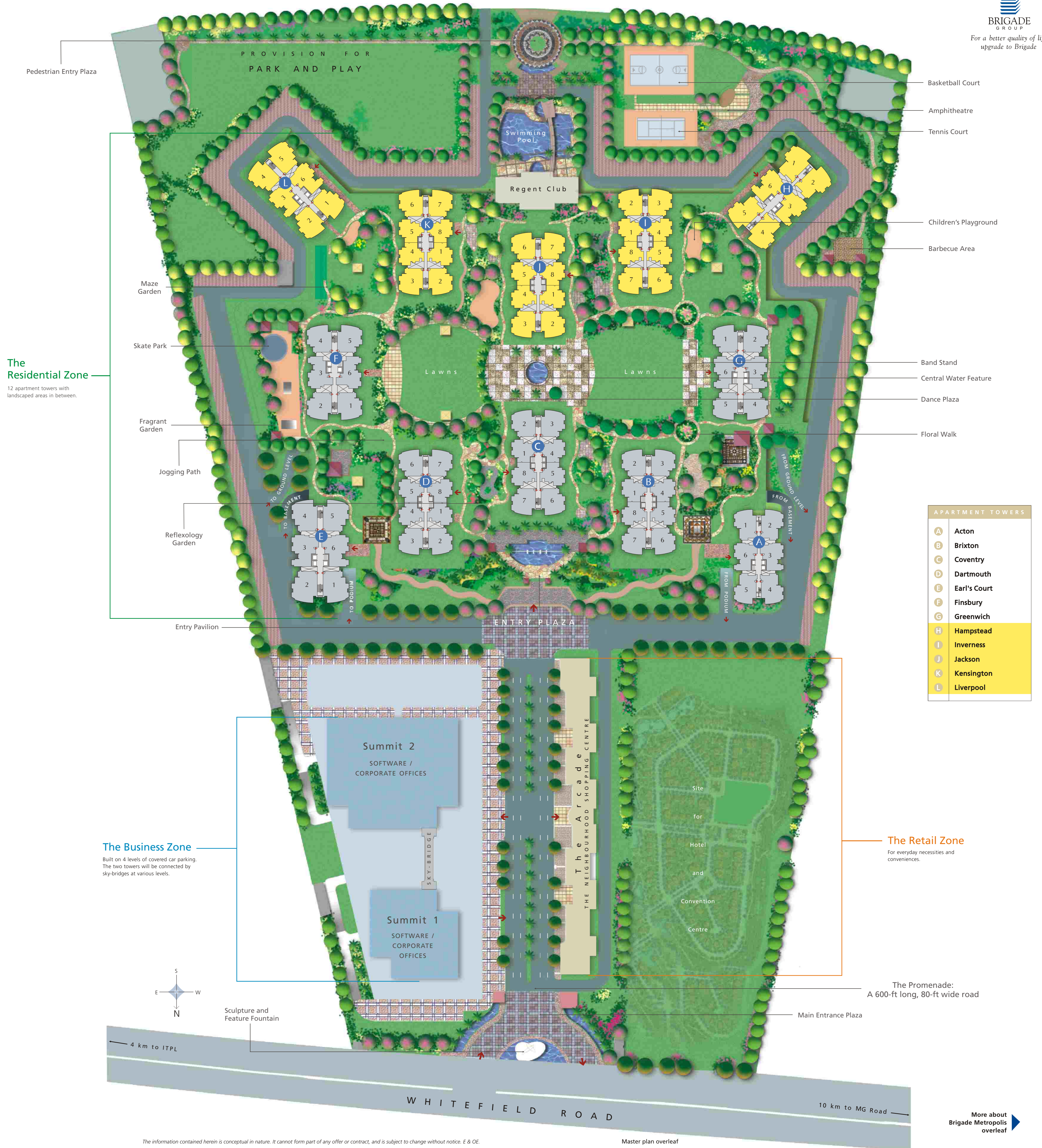
Discover for yourself...

Make the time to wander through this poster-brochure carefully. Then imagine your life in Brigade Metropolis. A quiet, clean, green world to call your own. Beautiful, intelligently designed apartments. The luxury of essential facilities and services right within your gates. In short, a really enriching quality of life. In an area that is developing into a vibrant extension of the city, with malls, multiplexes and a growing community of young professionals.

Brigade Group

We have pioneered the development of integrated enclaves in Bangalore. We have designed and developed three enclaves to date—each of which raised existing benchmarks of excellence, to become landmark projects on Bangalore's cityscape.

For a better quality of life, upgrade to Brigade.



The Residential Zone
12 apartment towers with landscaped areas in between.

The Business Zone
Built on 4 levels of covered car parking. The two towers will be connected by sky-bridges at various levels.

The Retail Zone
For everyday necessities and conveniences.

APARTMENT TOWERS	
A	Acton
B	Brixton
C	Coventry
D	Dartmouth
E	Earl's Court
F	Finsbury
G	Greenwich
H	Hampstead
I	Inverness
J	Jackson
K	Kensington
L	Liverpool

The information contained herein is conceptual in nature. It cannot form part of any offer or contract, and is subject to change without notice. E & OE.

Master Plan

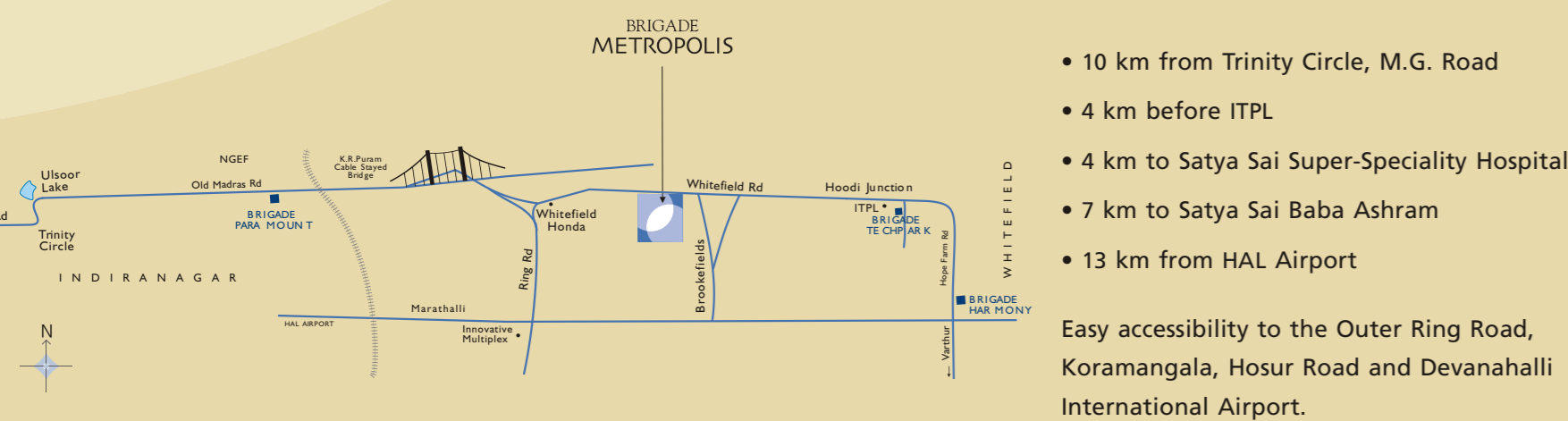
A large integrated enclave has to be well designed, not just well constructed. So that meaningful facilities, the kind that add real value to the lives of residents, are created. So that a sense of community is fostered and nourished. So that everyday life is made easier and more pleasant. The master plan of Brigade Metropolis has been conceived with all these objectives in mind.

The residential, business and retail sections of Brigade Metropolis give the enclave its cosmopolitan character. To ensure maximum convenience and privacy to the occupants of each section, the master plan ensures each of the three areas is set apart from the other, and has independent access and separate parking facilities.



In the IT Hub of Bangalore

The Whitefield region is perceived as encompassing several municipal boundaries and has grown into a vibrant satellite city, with well-developed infrastructure. Its landscape is defined by technology parks, sophisticated industries, and corporate offices, and it is home to several modern apartment complexes, restaurants, hotels and mushrooming retail outlets. The Satya Sai Baba Ashram and super-speciality hospital of the same name, several resorts and shopping complexes are in the vicinity. Whitefield has grown into a cosmopolitan suburb today. A much sought-after residential and business location.



- 10 km from Trinity Circle, M.G. Road
- 4 km before ITPL
- 4 km to Satya Sai Super-Speciality Hospital
- 7 km to Satya Sai Baba Ashram
- 13 km from HAL Airport

Easy accessibility to the Outer Ring Road, Koramangala, Hosur Road and Devanahalli International Airport.



LIFE IN METROPOLIS

Apartments

To reach the residential section of Brigade Metropolis, you drive along The Promenade, up to the apartments' Entry Plaza, with its beautiful feature fountain. Set 600 feet away from the main entrance to the enclave, sheltered from the pollution and noise of the outside world, you'll come upon a vast vista of greenery and gardens, interspersed with the twelve apartment towers that contain the enclave's approximately 1,500 apartments.

Each tower will be 19 storeys high, and designed to offer maximum light, ventilation and privacy to its occupants. Towers will be spaced well apart; the minimum space between any two towers being 100 feet. Since the entire residential section is built on an elevated podium, all towers are interconnected below the ground level.

Our luxury apartments will have two and three bedrooms. With the launch of Phase 2, we present a new and wide choice of apartments. The model apartment at Brigade Metropolis will give you a clear picture of how it will feel to call Brigade Metropolis home.



MODEL APARTMENT AT BRIGADE METROPOLIS



Summit 1 and 2

The Whitefield of today is a busy cosmopolitan extension of the city—and a preferred location for leading corporate offices and software facilities.

Located to the left of The Promenade, the enclave's two ultra-modern office buildings—Summit 1 with 14 floors and Summit 2 with 16 floors—will cover a built-up area of approximately 800,000 sft, and provide a state-of-the-art working environment for software facilities and corporate offices. The two towers will be connected through sky-bridges at different levels.

Ample parking space will be created at four levels.



SUMMIT 1 AND 2, AS VIEWED FROM THE PROMENADE

Landscaping

The gardens of Brigade Metropolis will be a tribute to the imagination and painstaking effort of expert landscapers. The sheer extent and variety of these gardens will be a source of daily delight—Reflexology, Maze and Fragrant gardens; party lawns; a floral walk; pavilion seating amidst trellised arches; gazebos, fountains and water bodies; pathways and jogging tracks... The great outdoors at Brigade Metropolis will—additionally—include cheerful playgrounds, a floral clock, a skate park, barbecue area, exercise station, dance plaza, band stand and a special alcove for senior citizens.



AMPHITHEATRE AND ONE OF THE PARK AREAS

ENTRANCE TO THE PROJECT OFFICE

The Podium Concept for Parking

The entire residential section of the enclave will be constructed on an elevated podium. (The beautifully landscaped garden areas you will see all around you stand on what is actually an elevated platform.) Not only does this provide residents with extensive, convenient underground parking space at ground and basement levels, but it also allows for easy underground access between towers.



Highlights

- A 36-acre integrated enclave
- Architecture by Thomas Associates
- 2- and 3-bedroom apartments
- Luxury specifications
- The Arcade: neighbourhood centre for shopping and small offices
- Regent Club a 50,000 sft club with swimming pool, sports facilities and gym
- Beautiful landscaping
- Several theme gardens: Reflexology, Maze, Spice and Fragrant
- Floral walk, amphitheatre, party lawns, skate park, dance plaza and band stand
- Summit 1 and 2: a state-of-the-art facility offering up to approximately 800,000 sft of space—ideal for software development or corporate offices
- Multi-level parking
- The Brigade School in the vicinity

Regent Club

Tucked snugly away at the back of the residential zone, the Regent Club will be set amidst trees and landscaped gardens. Its 50,000 sft of built-up space will play host to a range of sports, fitness and social facilities. As a member of the Regent Club, you will have access to the club's:

- Swimming pool
- Health club and gym
- Various indoor sports
- Auditorium
- Lounge
- Lawns

Apart from the sports facilities available at the club, the enclave will have various floodlit outdoor sports facilities.



PHOTOGRAPH OF SWIMMING POOL AND SPORTS FACILITIES AT THE WOODROSE CLUB, BRIGADE MILLENNIUM

The Arcade

Located at the entrance to the enclave, separated from Summit 1 and 2 by the stretch of The Promenade, The Arcade will offer 100,000 sft of excellent retail and small-office space. It is designed as the neighbourhood shopping centre, spread across four storeys. The Arcade will service the needs of the enclave's residents and users, as well as people living and working in the vicinity. Facilities are likely to include a supermarket, fruit and vegetable stalls, a cold storage, 24-hour pharmacy, clinics, a beauty parlour, ATM, cafeterias and a food court. The Arcade will also house business centres and provide small-office space for professionals.



THE ARCADE, AS VIEWED FROM THE PROMENADE